

CERTIFICATE OF LOCATION OF GOVERNMENT CORNER

County of Anoka

State of Minnesota

North 1/4 Corner of Sec. 5 Township 30 Range 23

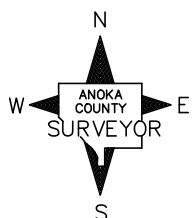
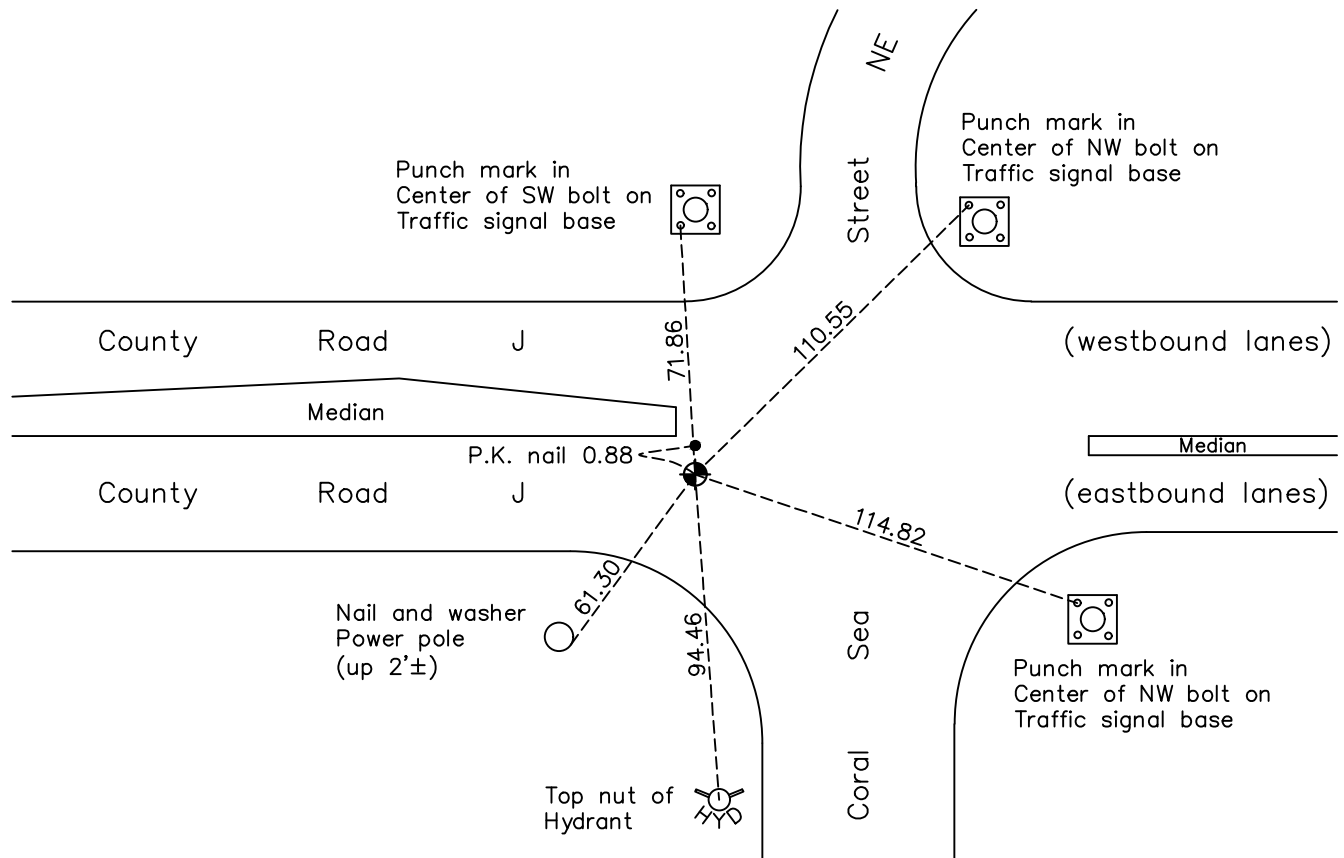
(RAMSEY COUNTY MONUMENT)

On the 27th day of October, 1964, the described corner was evidenced by a 6" square granite monument

and to perpetuate the location of said corner, at the exact location thereof, a permanent marker was placed consisting of a cast iron monument (Correction Monument 1995)

AND on the 23rd day of May, 2022, said permanent marker was found down 0.5'± in a covered tube and the ties were updated

Updated reference ties are as shown below.



Revision Date
10/21/2022

N.A.D. 1983 Coordinates
(1996 Adjustment)

County Project Coordinates	
Northing	<u>132500.1027</u>
Easting	<u>517472.7557</u>
Date	<u>8/03/99</u>

I hereby certify that this United States public land survey monument record is correct and complete to the best of my knowledge and belief.

David Zieglmeier Date 2/28/23

David Zieglmeier Anoka County Surveyor
Minnesota License Number 46179

HISTORY OF GOVERNMENT CORNER

Page No. 128

County of Anoka

State of Minnesota

North 1/4 Corner of Sec. 5 Township 30 Range 23
(RAMSEY COUNTY MONUMENT)

CORNER HISTORY:

October 27, 1964 - Found 6" x 6" granite monument down 0.5' with a drill hole in the center. Updated ties.

July 31, 1968 - Found granite monument and updated ties.

September 27, 1971 - Found granite monument and updated ties.

May 27, 1975 - Found granite monument and updated ties.

August 15, 1977 - Found granite monument and updated ties.

June 12, 1980 - Found granite monument and updated ties.

October 17, 1990 - Found granite monument and updated ties.

July 5, 1995 - Found granite monument and updated ties.

August 3, 1999 - Found cast iron monument (1995 correction) with an p.k. nail 0.88' to the north. Established NAD 1983 (1996 adj.) Anoka County project coordinates by static GPS methods. Updated ties.

July 14, 2014 - Found cast iron monument (1995 correction) down 0.5'± in a covered tube. Verified position by VRS GPS methods. Updated ties.

July 30, 2019 - Found cast iron monument (1995 correction) down 0.5'± in a covered tube. Updated ties.

May 23, 2022 - Found cast iron monument (1995 correction) down 0.5'± in a covered tube. Updated ties.