

# CERTIFICATE OF LOCATION OF GOVERNMENT CORNER

County of Anoka

State of Minnesota

## Northeast Corner of Sec. 6 Township 30 Range 23

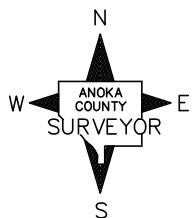
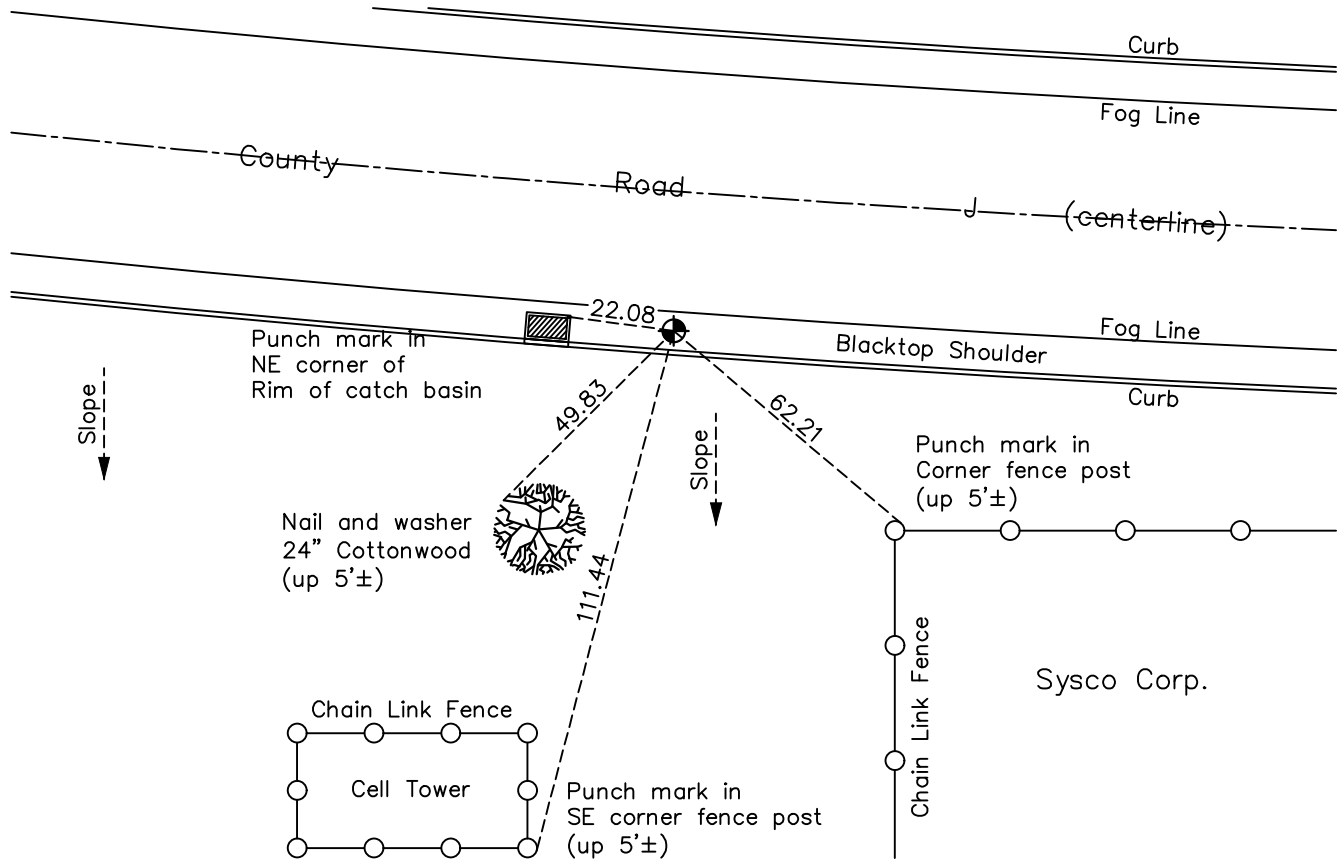
(RAMSEY COUNTY MONUMENT)

On the 27th day of October, 1964, the described corner was evidenced by a 6" square granite monument

and to perpetuate the location of said corner, at the exact location thereof, a permanent marker was placed consisting of a cast iron monument

AND on the 9th day of May, 2022, said permanent marker was found down 0.5'± in a covered tube and the ties were updated.

Updated reference ties are as shown below.



Revision Date  
 10/21/2022

N.A.D. 1983 Coordinates  
 (1996 Adjustment)

County Project Coordinates	
Northing	132515.8502
Easting	514824.4879
Date	8/03/99

I hereby certify that this United States public land survey monument record is correct and complete to the best of my knowledge and belief.

*David Zieglmeier* Date 2/28/23

David Zieglmeier Anoka County Surveyor  
 Minnesota License Number 46179

# HISTORY OF GOVERNMENT CORNER

Page No. 130

County of Anoka

State of Minnesota

## Northeast Corner of Sec. 6 Township 30 Range 23 (RAMSEY COUNTY MONUMENT)

### **CORNER HISTORY:**

October 27, 1964 - Found 6" x 6" granite monument flush with a drill hole in the center. Updated ties.

July 31, 1968 - Found granite monument and updated ties.

September 24, 1971 - Found granite monument and updated ties.

May 27, 1975 - Found granite monument and updated ties.

August 15, 1977 - Found granite monument and updated ties.

June 13, 1980 - Found cast iron monument flush and imbedded in concrete. Updated ties.

June 4, 1986 - Found cast iron monument and updated ties.

August 1, 1990 - Found cast iron monument and updated ties.

August 3, 1999 - Found cast iron monument. Established NAD 1983 (1996 adj.) Anoka County project coordinates by static GPS methods and updated ties.

July 3, 2014 - Found cast iron monument down in covered tube. Updated ties.

June 26, 2019 - Found cast iron monument down 0.5'± in a covered tube. Verified position by VRS GPS methods. Updated ties.

May 9, 2022 - Found cast iron monument down 0.5'± in a covered tube. Verified position by VRS GPS methods. Updated ties.