

CERTIFICATE OF LOCATION OF GOVERNMENT CORNER

County of Anoka

State of Minnesota

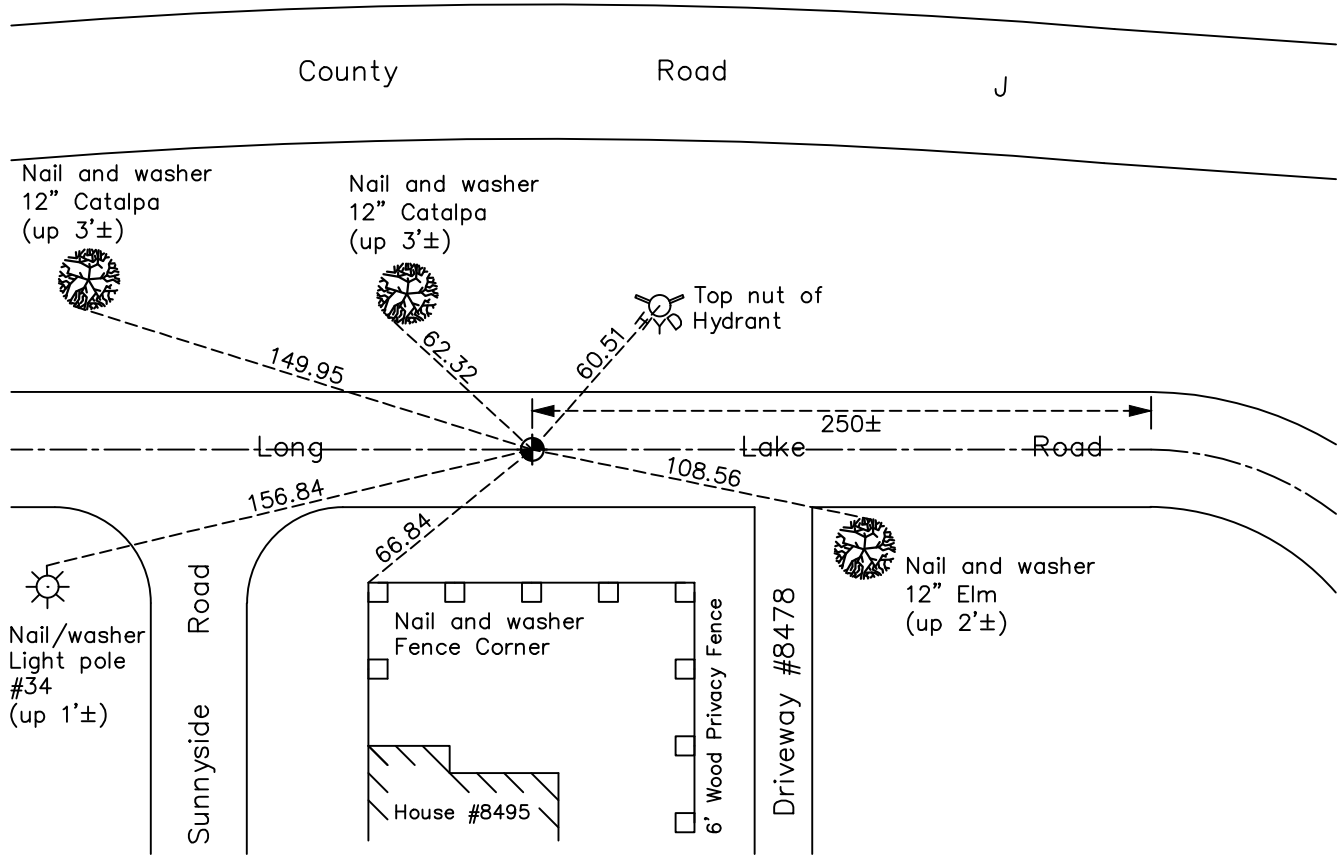
South 1/4 Corner of Sec. 33 Township 31 Range 23

On the 16th day of November, 1964, the described corner was evidenced by area resurvey

and to perpetuate the location of said corner, at the exact location thereof, a permanent marker was placed consisting of a cast iron monument

AND on the 9th day of May, 2022, said permanent marker was found flush and the ties were updated

Updated reference ties are as shown below.



Revision Date
 10/21/2022

N.A.D. 1983 Coordinates
 (1996 Adjustment)

County Project Coordinates	
Northing	132524.4447
Easting	513361.9500
Date	7/29/99

I hereby certify that this United States public land survey monument record is correct and complete to the best of my knowledge and belief.
David Zieglmeier Date 2/28/23
 David Zieglmeier Anoka County Surveyor
 Minnesota License Number 46179

HISTORY OF GOVERNMENT CORNER

Page No. 131

County of Anoka

State of Minnesota

South 1/4 Corner of Sec. 33 Township 31 Range 23

CORNER HISTORY:

November 16, 1964 - Set cast iron monument flush using area resurvey. Established ties to monument.

July 31, 1968 - Found cast iron monument and updated ties.

September 24, 1971 - Found cast iron monument and updated ties.

May 27, 1975 - Found cast iron monument and updated ties.

August 15, 1977 - Found cast iron monument and updated ties.

June 13, 1980 - Found cast iron monument and updated ties.

June 4, 1986 - Found cast iron monument and updated ties.

June 21, 1990 - Found cast iron monument and updated ties.

December 12, 1990 - Found cast iron monument and set construction ties prior to road construction.

April 8, 1991 - Removed cast iron monument.

September 28, 1993 - Set cast iron monument after road construction and updated ties.

July 5, 1995 - Found cast iron monument and updated ties.

July 27, 1999 - Found cast iron monument. Established NAD 1983 (1996 adj.) Anoka County project coordinates by static GPS methods. Updated ties.

June 19, 2006 - Found cast iron monument and updated ties.

July 3, 2014 - Found cast iron monument and updated ties.

May 29, 2018 - Found cast iron monument. Verified position by VRS GPS methods and updated ties prior to road construction. Removed monument.

September 27, 2018 - Set cast iron monument after construction using static GPS methods. Verified position by VRS GPS methods. Updated ties.

June 26, 2019 - Found cast iron monument. Verified position by VRS GPS methods. Updated ties.

May 9, 2022 - Found cast iron monument. Verified position by VRS GPS methods. Updated ties.