

CERTIFICATE OF LOCATION OF GOVERNMENT CORNER

County of Anoka

State of Minnesota

North 1/4 Corner of Sec. 6 Township 30 Range 23

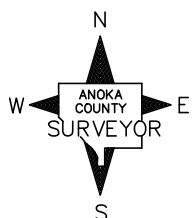
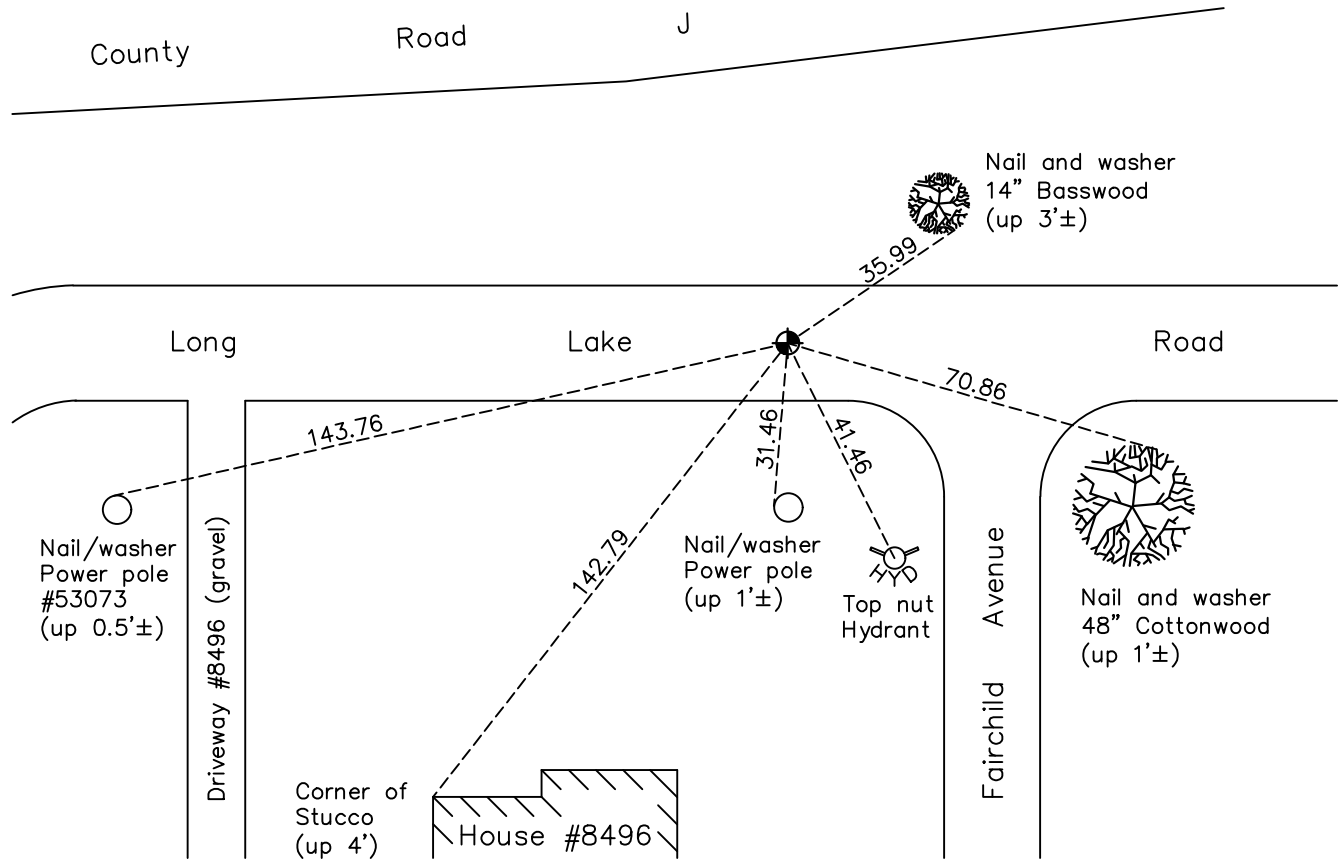
(RAMSEY COUNTY MONUMENT)

On the 28th day of October, 1964, the described corner was evidenced by a 3/4" axle shaft

and to perpetuate the location of said corner, at the exact location thereof, a permanent marker was placed consisting of a cast iron monument

AND on the 9th day of May, 2022, said permanent marker was found and the ties were updated.

Updated reference ties are as shown below.



Revision Date
 10/21/2022

N.A.D. 1983 Coordinates
 (1996 Adjustment)

County Project Coordinates	
Northing	132531.7399
Easting	512183.9255
Date	8/03/99

I hereby certify that this United States public land survey monument record is correct and complete to the best of my knowledge and belief.

David Zieglmeier Date 2/28/23

David Zieglmeier Anoka County Surveyor
 Minnesota License Number 46179

HISTORY OF GOVERNMENT CORNER

Page No. 132

County of Anoka

State of Minnesota

North 1/4 Corner of Sec. 6 Township 30 Range 23
(RAMSEY COUNTY MONUMENT)

CORNER HISTORY:

October 28, 1964 - Found 3/4" axle shaft and no trace of granite monument. Updated ties.

July 31, 1968 - Found 3/4" axle shaft and updated ties.

September 24, 1971 - Found cast iron monument with "Quarter Corner" written on it. Updated ties.

May 29, 1975 - Found cast iron monument and updated ties.

August 15, 1977 - Found cast iron monument and updated ties.

June 13, 1980 - Found cast iron monument and updated ties.

August 1, 1990 - Found cast iron monument and updated ties.

July 5, 1995 - Found cast iron monument and updated ties.

August 3, 1999 - Found cast iron monument. Established NAD 1983 (1996 adj.) Anoka County project coordinates by static GPS methods and updated ties.

July 1, 2014 - Found cast iron monument and updated ties.

June 26, 2019 - Found cast iron monument. Verified position by VRS GPS methods. Updated ties.

May 9, 2022 - Found cast iron monument, Verified position by VRS GPS methods and Updated ties.