

CERTIFICATE OF LOCATION OF GOVERNMENT CORNER

County of Anoka

State of Minnesota

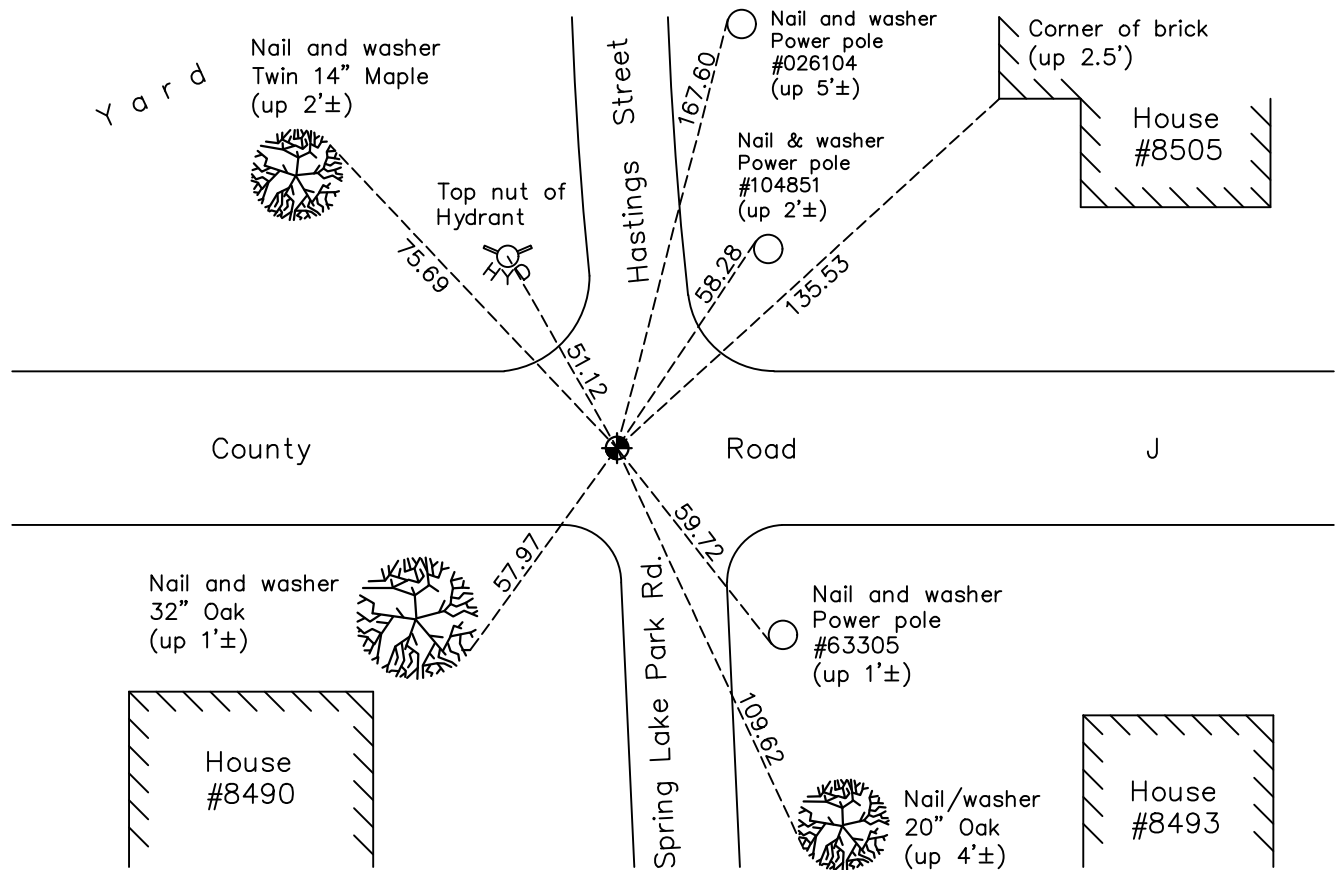
Southwest Corner of Sec. 33 Township 31 Range 23

On the 7th day of November, 1961, the described corner was evidenced by a railroad spike

and to perpetuate the location of said corner, at the exact location thereof, a permanent marker was placed consisting of a cast iron monument

AND on the 27th day of September, 2022, said permanent marker was Reset CIM flush to surface after road construction, and ties were updated.

Updated reference ties are as shown below.



Revision Date
10/20/2022

N.A.D. 1983 Coordinates
(1996 Adjustment)

County Project Coordinates	
Northing	<u>132540.5583</u>
Easting	<u>510721.8804</u>
Date	<u>7/29/99</u>

I hereby certify that this United States public land survey monument record is correct and complete to the best of my knowledge and belief.

David Zieglmeier Date 2/28/23

David Zieglmeier Anoka County Surveyor
Minnesota License Number 46179

HISTORY OF GOVERNMENT CORNER

Page No. 133

County of Anoka

State of Minnesota

Southwest Corner of Sec. 33 Township 31 Range 23

CORNER HISTORY:

April 4, 1940 - Set concrete monument on true section line as evidenced by granite monuments and Government distances from Northeast corner of Fridley Township.

1958 - Found 1" square iron and updated ties by Minnesota highway department.

November 7 , 1961 - Found rail road spike that fits old ties. Updated ties.

June 12, 1964 - Found rail road spike and updated ties.

July 31, 1968 - Found 1 1/4" iron pipe down 1'± and a bolt flush with road to northeast. Set cast iron monument flush on top of 1 1/4" iron pipe. Updated ties.

September 24, 1971 - Found cast iron monument and updated ties.

May 28, 1975 - Found cast iron monument and updated ties.

August 15, 1977 - Found cast iron monument and updated ties.

June 13, 1980 - Found cast iron monument and updated ties.

June 21, 1990 - Found cast iron monument and updated ties.

December 12, 1990 - Found cast iron monument and set construction ties prior to road construction.

April 8, 1991 - Removed cast iron monument.

October 15, 1991 - Set cast iron monument after road construction. Updated ties.

July 29, 1999 - Found cast iron monument. Established NAD 1983 (1996 adj.) Anoka County project coordinates y static GPS methods. Updated ties.

June 19, 2006 - Found cast iron monument and updated ties.

July 1, 2014 - Found cast iron monument broken needing reset. Checked corner ties to center fin of monument.

July 29, 2014 - Set cast iron monument using static GPS methods. Updated ties.

June 26, 2019 - Found cast iron monument. Verified position by VRS GPS methods. Updated ties.

September 27, 2022 – Reset cast iron monument flush with surface after road construction using static GPS. Updated ties.