

CERTIFICATE OF LOCATION OF GOVERNMENT CORNER  
 County of Anoka State of Minnesota

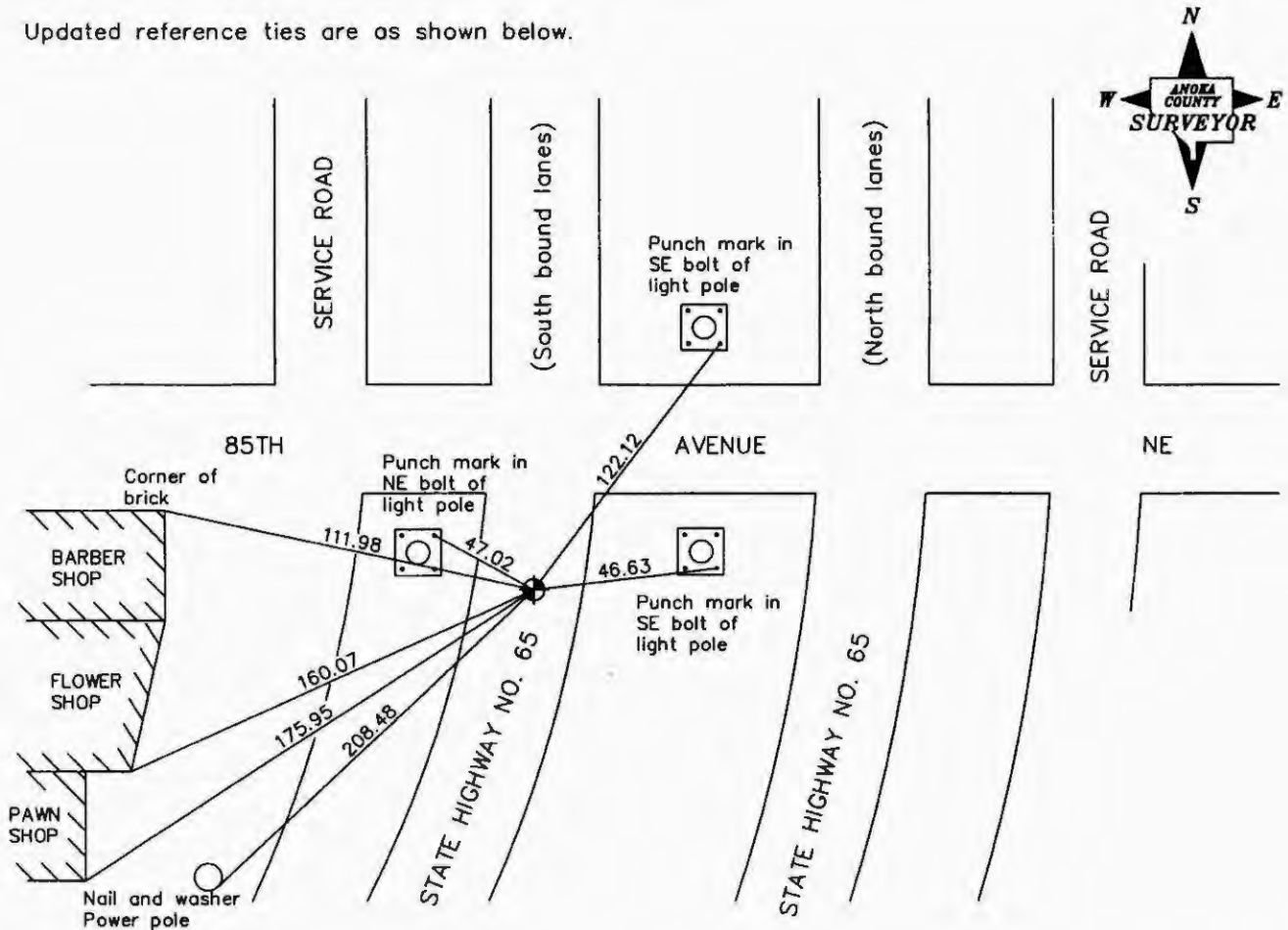
South 1/4 Corner of Sec. 32 Township 31 Range 23

On the 31st day of December, 1964, the described corner was evidenced by a P.K. nail set  
from platting

and to perpetuate the location of said corner, at the exact location thereof, a permanent marker  
 was placed consisting of a cast iron monument

AND on the 7th day of September, 2006, said permanent marker was not found and a 1/2" x 11"  
iron pipe was set using area resurvey

Updated reference ties are as shown below.



Revised date

6/3/86
7/11/90
7/18/95
Reset 9/7/06

N.A.D. 1983 Coordinates  
 (1996 Adjustment)

County Project Coordinates	
Northing	<u>132558.5766</u>
Easting	<u>508044.4209</u>
Date	<u>9/7/06</u>

I hereby certify that this United States public land survey monument record is correct and complete to the best of my knowledge and belief.

*Larry D. Hoium* Date 6/29/07  
Larry D. Hoium, Anoka County Surveyor  
 Minnesota License Number 18165