

# CERTIFICATE OF LOCATION OF GOVERNMENT CORNER

County of Anoka

State of Minnesota

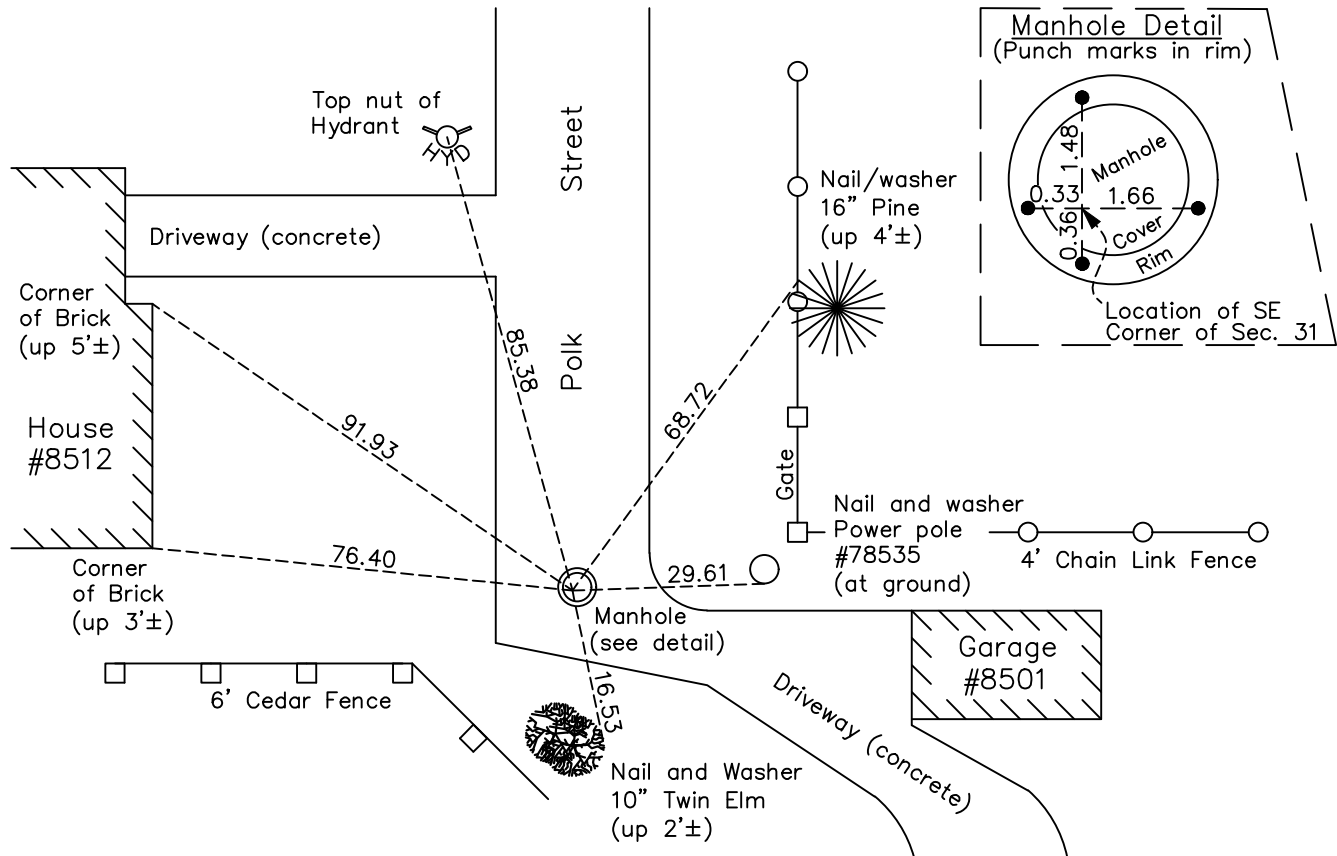
## Southeast Corner of Sec. 31 Township 31 Range 23

On the 17th day of June, 1960, the described corner was evidenced by a concrete monument

and to perpetuate the location of said corner, at the exact location thereof, a permanent marker was placed consisting of a location on a manhole cover

AND on the 6th day of May, 2022, said permanent marker was found and the ties were updated

Updated reference ties are as shown below.



Revision Date  
10/21/2022

N.A.D. 1983 Coordinates  
(1996 Adjustment)

County Project Coordinates	
Northing	132547.3787
Easting	505401.7991
Date	7/29/99

I hereby certify that this United States public land survey monument record is correct and complete to the best of my knowledge and belief.  
*David Zieglmeier* Date 2/28/23  
David Zieglmeier Anoka County Surveyor  
Minnesota License Number 46179

# HISTORY OF GOVERNMENT CORNER

Page No. 135

County of Anoka

State of Minnesota

## Southeast Corner of Sec. 31 Township 31 Range 23

### **CORNER HISTORY:**

June 17, 1960 - Found concrete monument flush and set a 1/2" iron on the north side. Updated ties.

June 12, 1964 - Found concrete monument and updated ties.

September 1, 1967 - Found concrete monument missing. Corner location falls on manhole cover. Set P.K. nails to the North, South, East and West of manhole. Intersection point of P.K. nails is corner location. Updated ties.

July 29, 1968 - Found manhole with P.K. nail intersection point. Updated ties.

September 23, 1971 - Found manhole with P.K. nail intersection point. Updated ties.

May 27, 1975 - Found manhole with P.K. nail intersection point. Updated ties.

August 15, 1977 - Found manhole with P.K. nail intersection point. Updated ties.

June 17, 1980 - Found corner location on manhole cover. Updated ties.

June 30, 1983 - Found corner location on manhole cover. Updated ties.

May 30, 1986 - Found corner location on manhole cover. Updated ties.

June 21, 1990 - Found corner location on manhole cover. Updated ties.

June 9, 1995 - Found corner location on manhole cover. Updated ties.

July 29, 1999 - Found manhole and set punch marks in rim of manhole to the North, South, East and West. Intersection point of punch marks in rim is the corner location. Updated ties. Established NAD 1983 (1996 adj.) Anoka County project coordinates by static GPS methods.

August 21, 2006 - Found manhole with punch mark intersection point. Updated ties.

July 1, 2014 - Found manhole with punch mark intersection point. Updated ties.

June 24, 2019 - Found manhole with punch mark intersection point. Verified position by VRS GPS methods. Updated ties.

May 6, 2022 - Found manhole with punch mark intersection point. Verified position by VRS GPS methods. Updated ties.