

CERTIFICATE OF LOCATION OF GOVERNMENT CORNER

County of Anoka

State of Minnesota

Witness Corner of Sec. 10 Township 31 Range 23

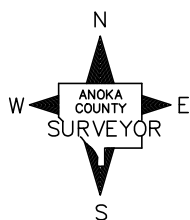
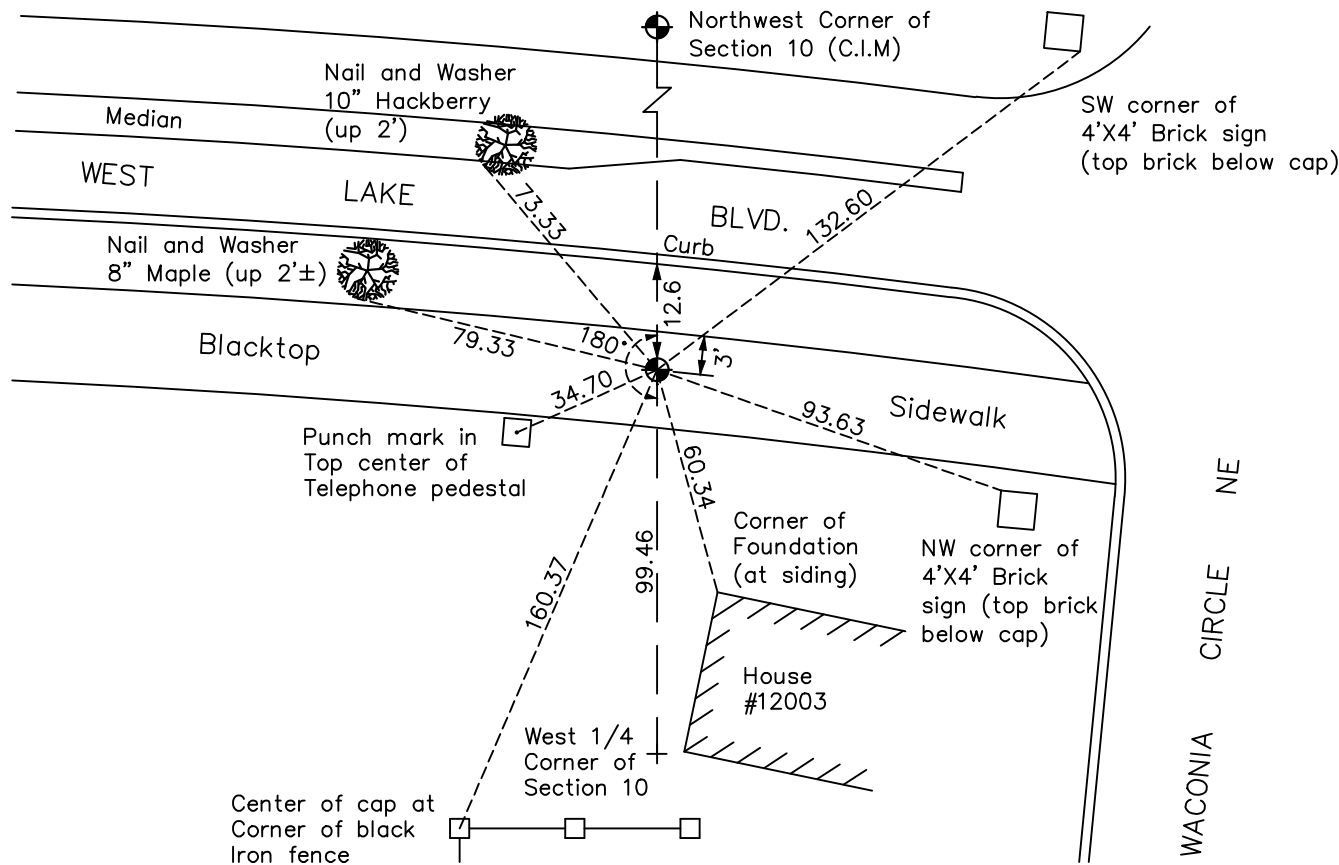
(on west line of NW 1/4)

On the 15th day of June, 2006, the described corner was evidenced by area resurvey

and to perpetuate the location of said corner, at the exact location thereof, a permanent marker was placed consisting of a cast iron monument

AND on the 17th day of May, 2022, said permanent marker was found flush with the surface and set in concrete. The ties were updated.

Updated reference ties are as shown below.



Revision Date

10/21/2022

N.A.D. 1983 Coordinates
(1996 Adjustment)

County Project Coordinates

Northing 156466.4658

Easting 516135.8046

Date 6/15/06

I hereby certify that this United States public land survey monument record is correct and complete to the best of my knowledge and belief.

David Zieglmeier Date 2/28/23

David Zieglmeier Anoka County Surveyor
Minnesota License Number 46179

HISTORY OF GOVERNMENT CORNER

Page No. 137

County of Anoka

State of Minnesota

Witness Corner of Sec. 10 Township 31 Range 23
(on west line of NW 1/4)

CORNER HISTORY:

June 15, 2006 - Set cast iron monument flush using area resurvey. Established NAD 1983 (1996 adj.) Anoka County project coordinates by static GPS methods. Established ties to monument.

May 15, 2014 - Found cast iron monument flush. Verified position by VRS GPS methods. Updated ties.

June 11, 2019 - Found cast iron monument flush. Verified position by VRS GPS methods. Updated ties.

May 17, 2022 - Found cast iron monument flush. Verified position by VRS GPS methods. Updated ties.