

CERTIFICATE OF LOCATION OF GOVERNMENT CORNER

County of Anoka

State of Minnesota

Witness Corner of Sec. 10 Township 31 Range 23

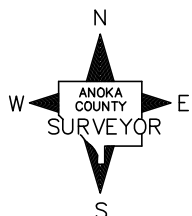
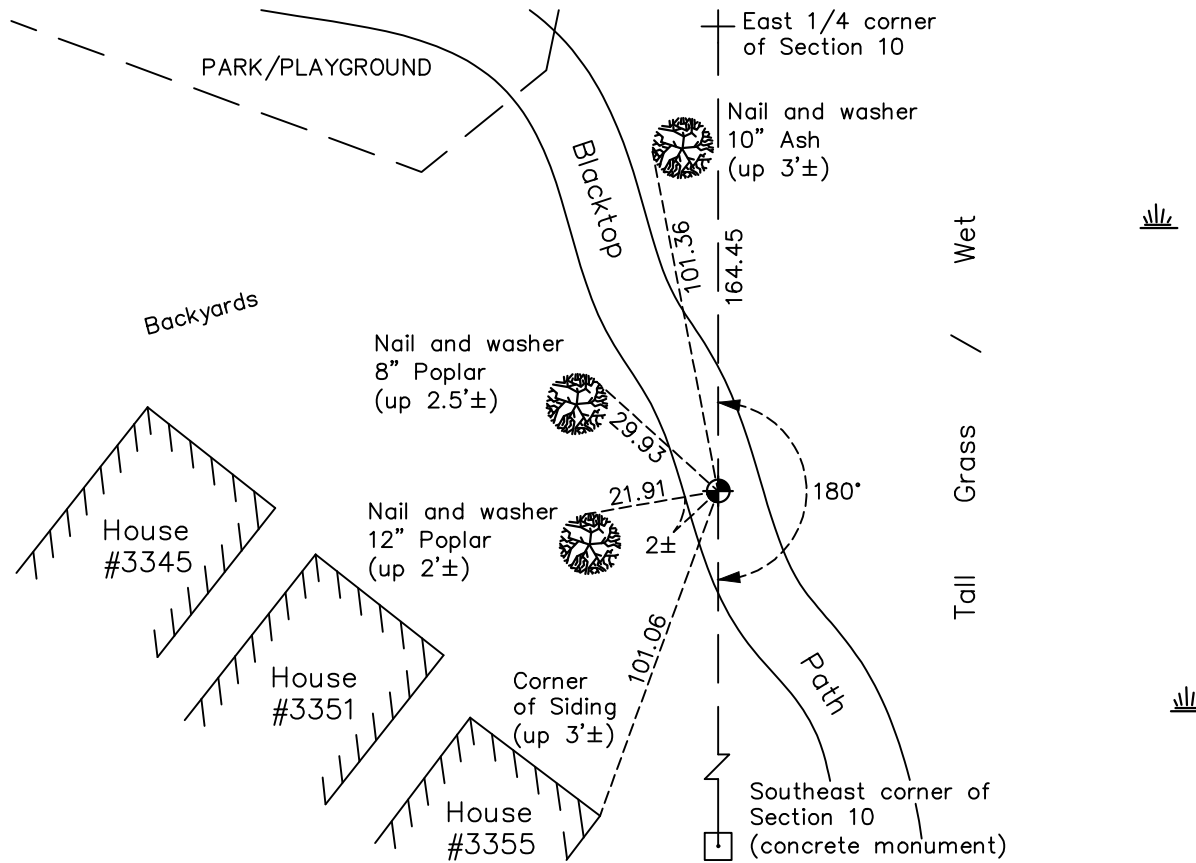
(on east line of SE 1/4)

On the 15th day of June, 2006, the described corner was evidenced by area resurvey

and to perpetuate the location of said corner, at the exact location thereof, a permanent marker was placed consisting of a cast iron monument

AND on the 2nd day of May, 2022, said permanent marker was found flush with the surface and set in concrete. The ties were updated.

Updated reference ties are as shown below.



N.A.D. 1983 Coordinates
(1996 Adjustment)

County Project Coordinates	
Northing	156069.6710
Easting	521424.1197
Date	6/15/06

I hereby certify that this United States public land survey monument record is correct and complete to the best of my knowledge and belief.

David Zieglmeier Date 2/28/23

David Zieglmeier Anoka County Surveyor
Minnesota License Number 46179

Revision Date
10/21/2022

HISTORY OF GOVERNMENT CORNER

County of Anoka

State of Minnesota

Witness Corner of Sec. 10 Township 31 Range 23
(on east line of SE 1/4)

CORNER HISTORY:

June 15, 2006 - Set cast iron monument flush using area resurvey. Established ties to monument. Established NAD 1983 (1996 adj.) Anoka County project coordinates by static GPS methods.

May 15, 2014 - Found cast iron monument flush. Verified position by VRS GPS methods. Updated ties.

June 10, 2019 - Found cast iron monument flush. Verified position by VRS GPS methods. Updated ties.

May 2, 2022 - Found cast iron monument flush, Verified position by VRS GPS methods and Updated ties.