

# CERTIFICATE OF LOCATION OF GOVERNMENT CORNER

County of Anoka

State of Minnesota

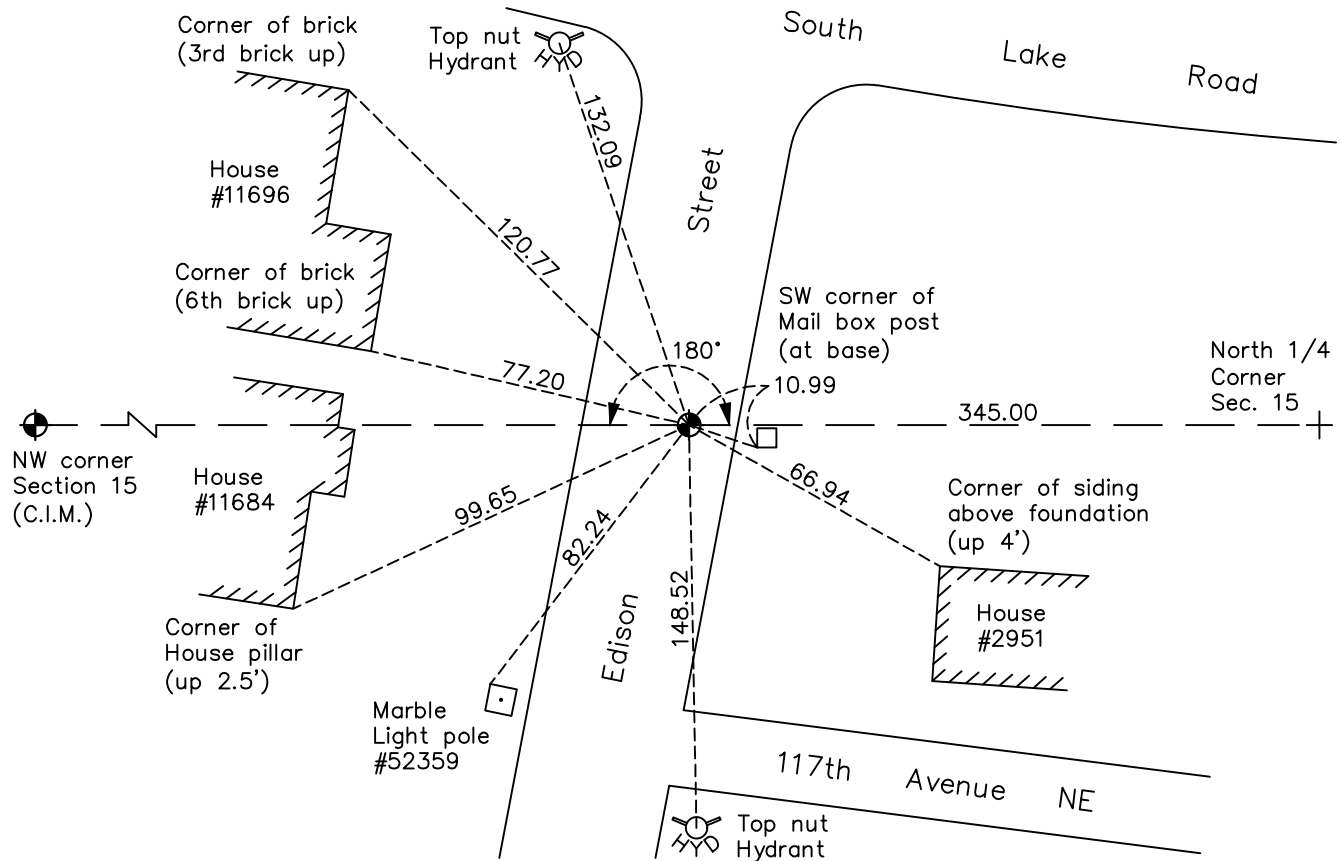
Witness Corner of Sec. 15 Township 31 Range 23  
(on north line of NW 1/4)

On the 15th day of June, 2006, the described corner was evidenced by area resurvey

and to perpetuate the location of said corner, at the exact location thereof, a permanent marker was placed consisting of a cast iron monument

AND on the 2nd day of May, 2022, said permanent marker was found flush and the  
ties were updated.

Updated reference ties are as shown below.



Revision Date  
10/21/2022

N.A.D. 1983 Coordinates  
(1996 Adjustment)

County Project Coordinates	
Northing	<u>153667.9783</u>
Easting	<u>518390.9184</u>
Date	<u>6/15/06</u>

I hereby certify that this United States public land survey monument record is correct and complete to the best of my knowledge and belief.

David Zieglmeier Date 2/28/23

David Zieglmeier Anoka County Surveyor  
 Minnesota License Number 46179

# HISTORY OF GOVERNMENT CORNER

Page No. 139

County of Anoka

State of Minnesota

Witness Corner of Sec. 15 Township 31 Range 23  
(on north line of NW 1/4)

## **CORNER HISTORY:**

June 15, 2006 - Set cast iron monument flush using area resurvey. Established ties to monument. Established NAD 1983 (1996 adj.) Anoka County project coordinates by static GPS methods.

May 15, 2014 - Found cast iron monument without a monument top. Added a monument top. Verified position by VRS GPS methods. Updated ties.

June 11, 2019 - Found cast iron monument flush. Verified position by VRS GPS methods. Updated ties.

May 2nd, 2022 - Found cast iron monument flush, verified position by VRS GPS methods and Updated ties.