

CERTIFICATE OF LOCATION OF GOVERNMENT CORNER

County of Anoka

State of Minnesota

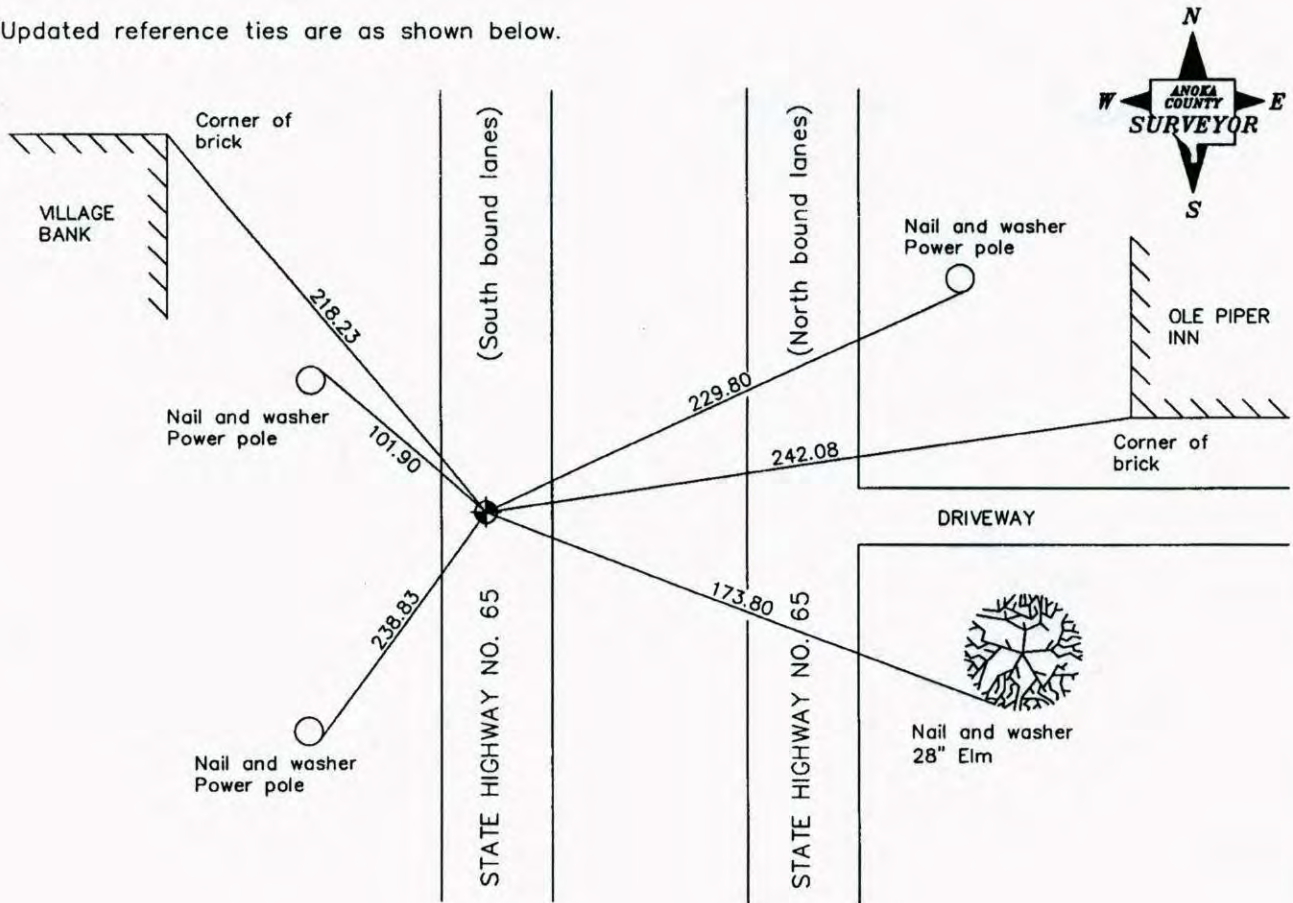
North 1/4 Corner of Sec. 32 Township 31 Range 23

On the ___ day of ___ July ___, 1957, the described corner was evidenced by a P.K. nail

and to perpetuate the location of said corner, at the exact location thereof, a permanent marker was placed consisting of a cast iron monument

AND on the 6th day of September, 2006, said permanent marker was not found and a 1/2" x 12" iron pipe was set using area resurvey

Updated reference ties are as shown below.



Revised date

7/11/90
10/24/90
7/18/95
Reset 9/6/06

N.A.D. 1983 Coordinates
(1996 Adjustment)

County Project Coordinates	
Northing	<u>137852.2318</u>
Easting	<u>508041.7970</u>
Date	<u>9/6/06</u>

I hereby certify that this United States public land survey monument record is correct and complete to the best of my knowledge and belief.

Larry D. Hoium Date 6/29/07
 _____, Anoka County Surveyor
 Minnesota License Number 18165

CERTIFICATE OF LOCATION OF GOVERNMENT CORNER

County of Anoka

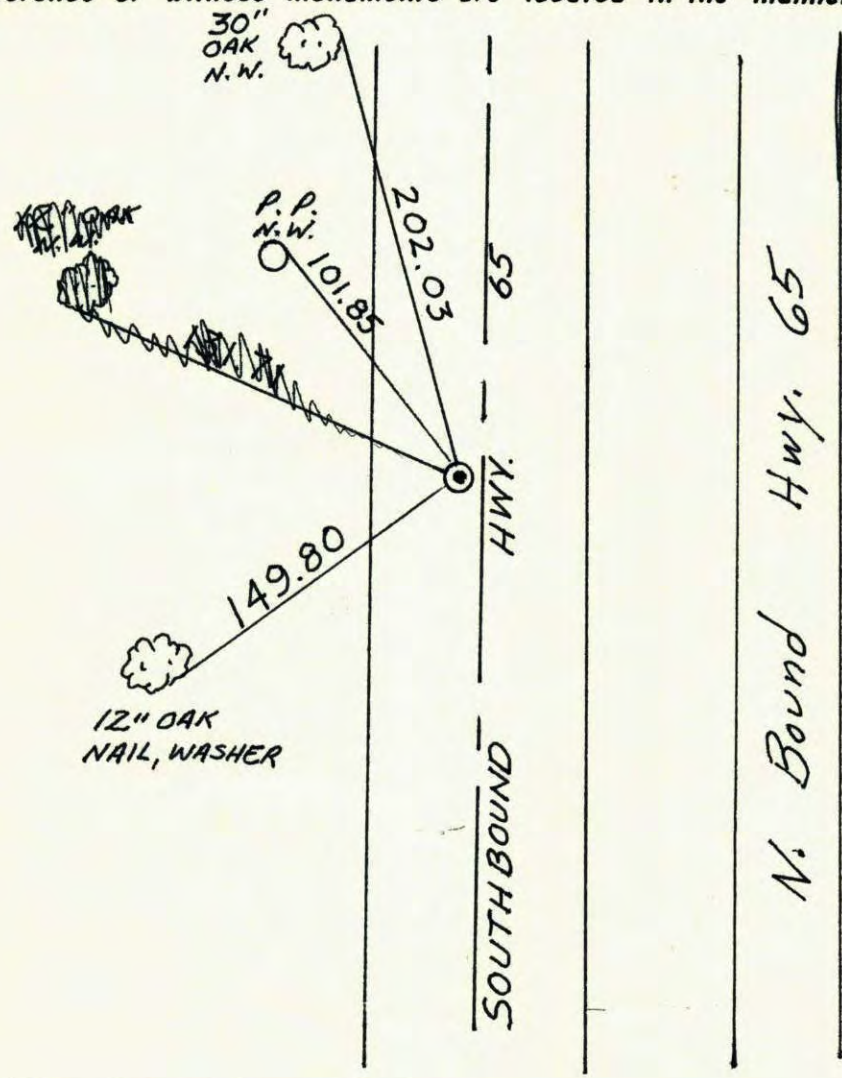
State of Minnesota

NORTH QTR. Corner of Sec. 32 Township 31 Range 23

I hereby certify that on the day of JULY, 1957, I found the described corner which was evidenced by P. K. SPIKE

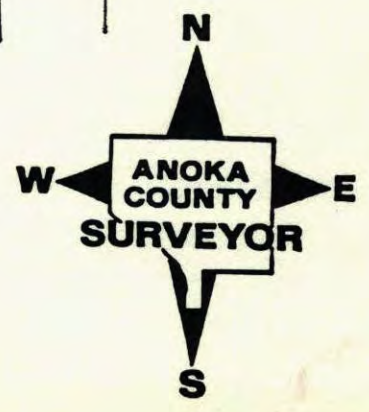
and I further certify that to perpetuate the location of said corner, I did, at the exact location thereof, place a permanent marker consisting of CAST IRON MON.

which reference or witness monuments are located in the manner following:



N.A.D.	1983	Co-ordinates
County	Project	Co-ordinates
Northing	<u>137852.2318</u>	
Easting	<u>508041.7970</u>	
State Plane Co-ordinates		
Y	_____	
X	_____	
Date	_____	

Revised date	Revised date	Revised date
6-11-86		
7-11-90		
10-24-90		
7-18-95		



CERTIFICATE OF LOCATION OF GOVERNMENT CORNER

County of Anoka

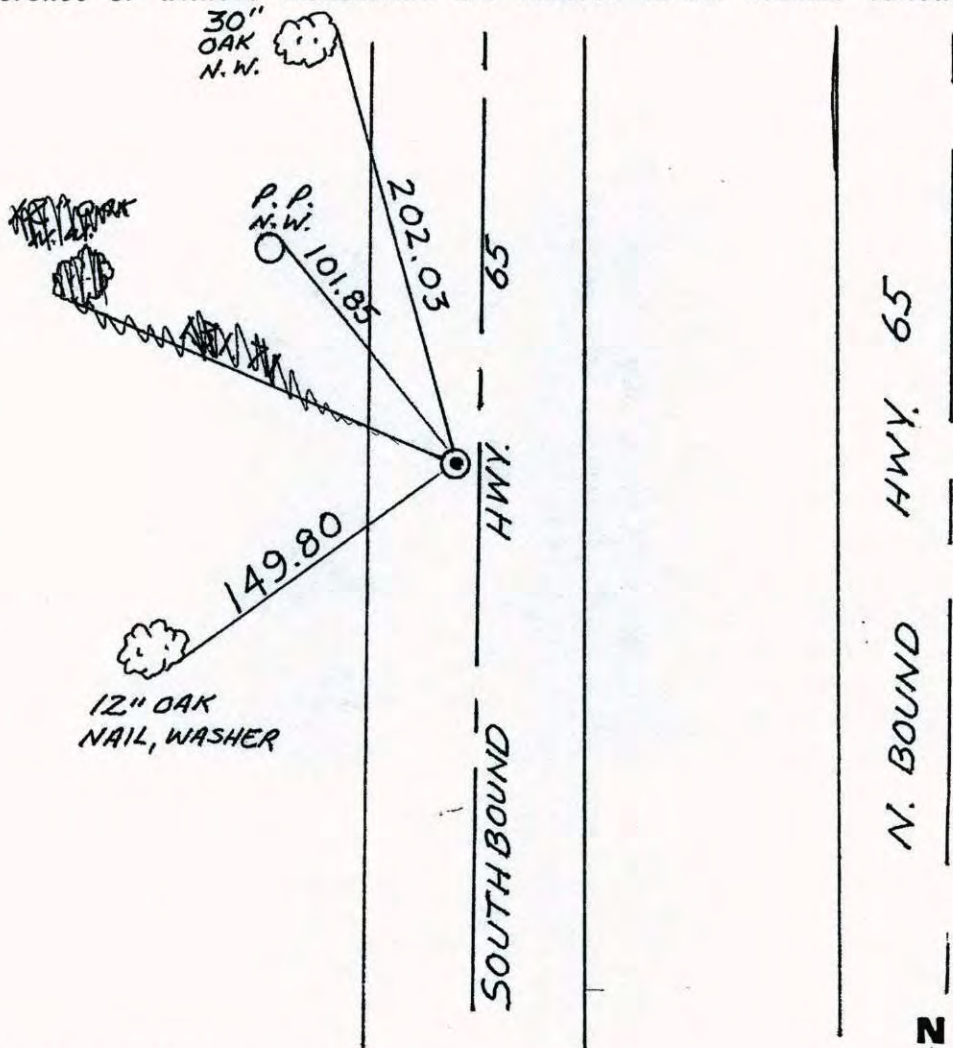
State of Minnesota

NORTH QTR. Corner of Sec. 32 Township 31 Range 23

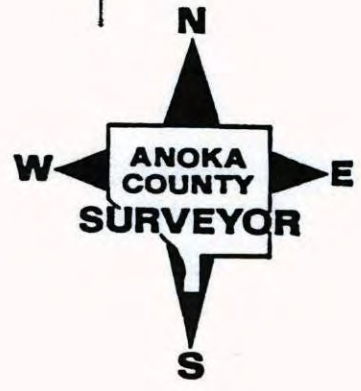
I hereby certify that on the day of JULY, 1957, I found the described corner which was evidenced by P. K. SPIKE

and I further certify that to perpetuate the location of said corner, I did, at the exact location thereof, place a permanent marker consisting of CAST IRON MON.

which reference or witness monuments are located in the manner following:



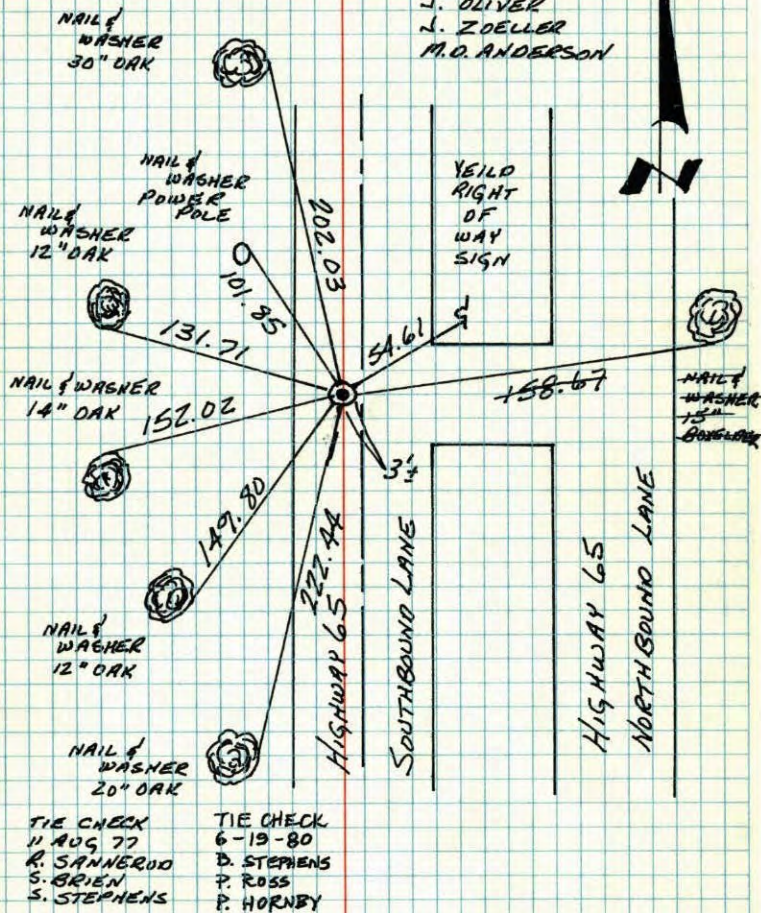
Revised date	Revised date	Revised date
6-11-86		
7-11-90		
10-24-90		
7-18-95		



N 1/4 CORNER SECTION 32-T31-R23

SET CAST IRON MONUMENT AT LOCATION OF FOUND
PK NAIL FROM OLD TIES. MONUMENT FLUSH, WITH
PK'S 2.00' NORTH AND EAST.

8 MAR 62
J. OLIVER
J. ZOELLER
M.D. ANDERSON



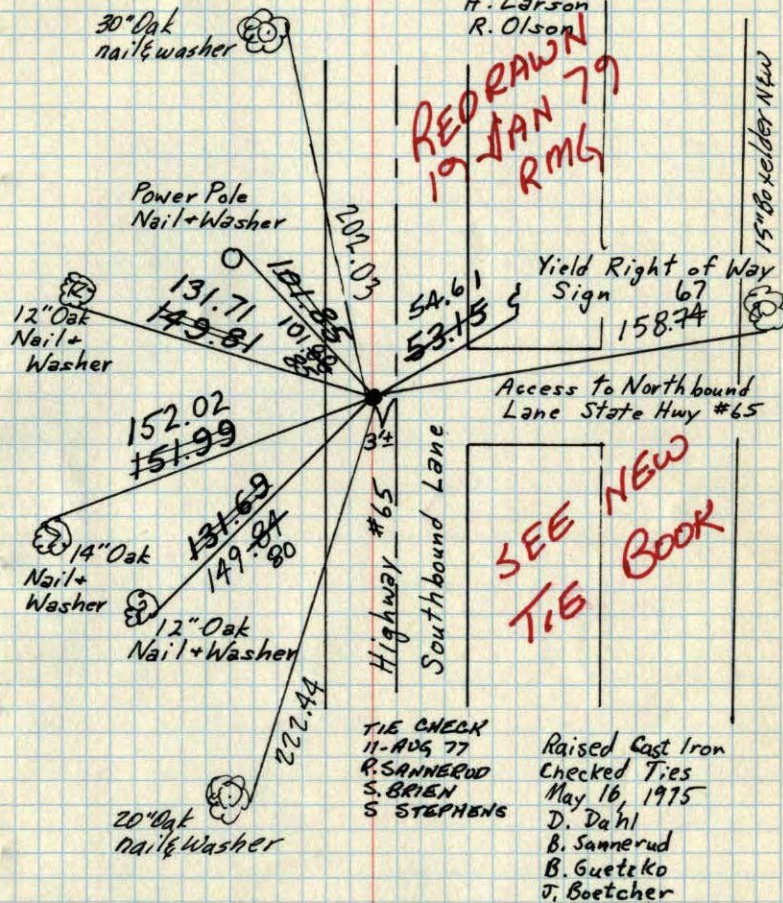
TEMPERATURE CORRECTED
AND HORIZONTALLY
TAPED MEASUREMENTS

ROLAND W. ANDERSON
COUNTY SURVEYOR
ANOKA COUNTY, MINNESOTA

N 1/4 Cor. Sec. 32-T31-R23

Found PK Nail as said on old ties. Mar. 8, 1962
Set Cast Iron Monument flush in place of PK Nail. PK's 2.00' North + East. Aug. 28, 1969

J. Oliver
J. Zoelker
M.D. Anderson
D. Powell
H. Larson
R. Olson

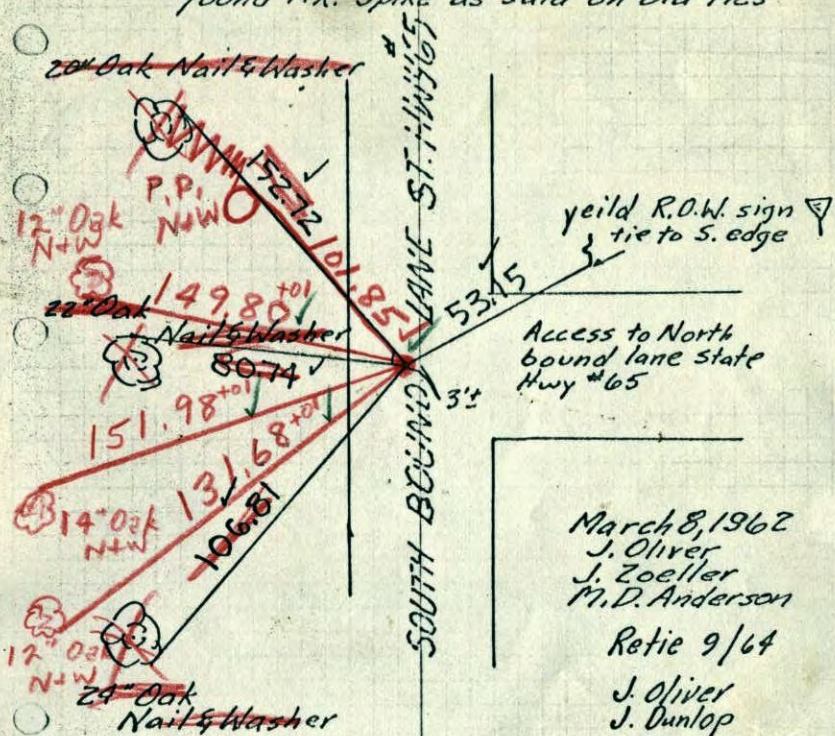


TEMPERATURE CORRECTED
AND HORIZONTALLY
TAPED MEASUREMENTS

ROLAND W. ANDERSON
COUNTY SURVEYOR
ANOKA COUNTY, MINNESOTA

N¹/₄ Cor. Sec. 32-31-23

found P.K. Spike as said on old ties



March 8, 1962
 J. Oliver
 J. Zoeller
 M. D. Anderson
 Retie 9/64
 J. Oliver
 J. Dunlop

TEMPERATURE CORRECTED
 AND HORIZONTALLY
 TAPED MEASUREMENTS

Found P.K. Nail
 from stumps
 of tie trees
 + Yield Sign.
 Replaced with
 C.I. Mon, flush. PK's 2.00' N+E

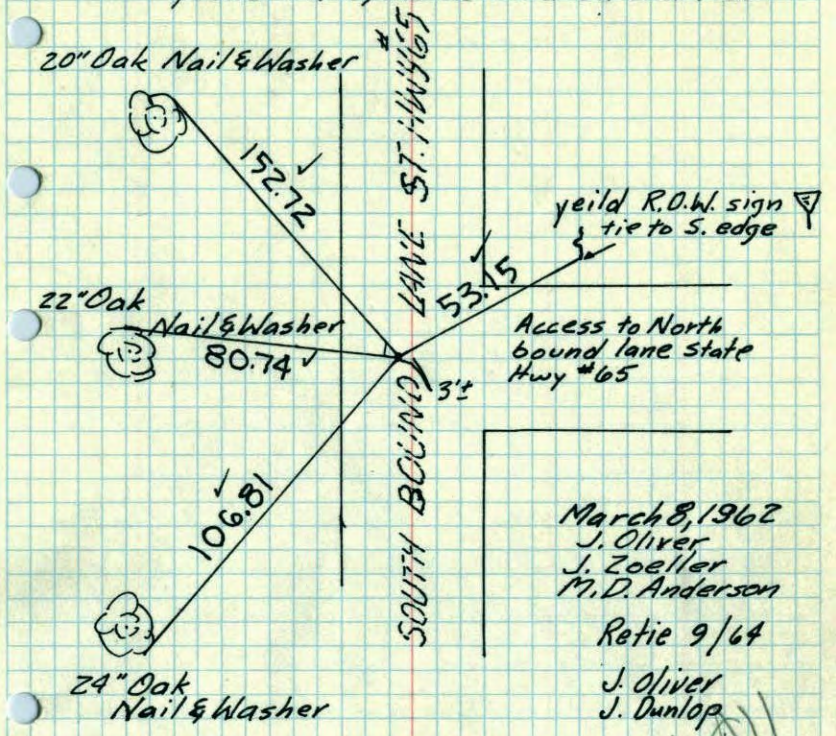
ROLAND W. ANDERSON
 COUNTY SURVEYOR
 ANOKA COUNTY, MINNESOTA

8/28/69
 #8-75V
 D.P., R.O., H.L.

~~Cor. and all
 Ties Gone
 Apr. 69~~

N¹/₄ Cor. Sec. 32-31-23

found P.K. Spike as said on old ties



March 8, 1962
 J. Oliver
 J. Zoeller
 M. D. Anderson
 Retie 9/64
 J. Oliver
 J. Dunlop

TEMPERATURE CORRECTED
 AND HORIZONTALLY
 TAPED MEASUREMENTS

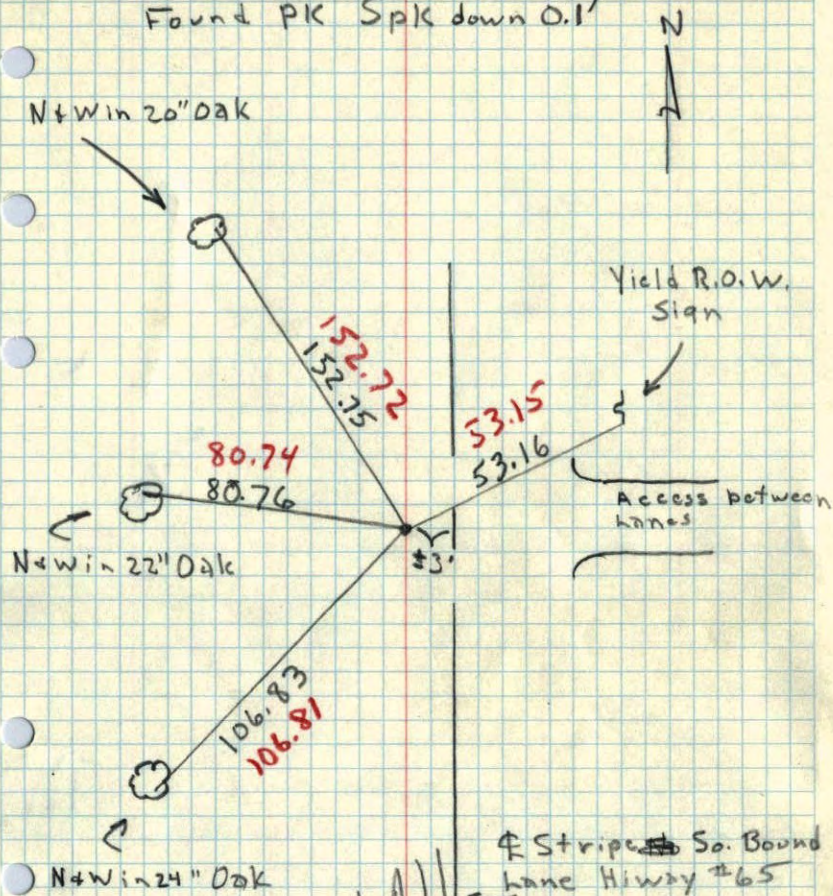
ROLAND W. ANDERSON
 COUNTY SURVEYOR
 ANOKA COUNTY, MINNESOTA

~~Cor. and All
 Ties Gone
 Apr. 69~~

read file

N 1/4 Cor Sec. 32, T 31, R 23

Found PK Spk down 0.1'



Cor. and All
Ties Gone
Apr. 69

8 Mar 62

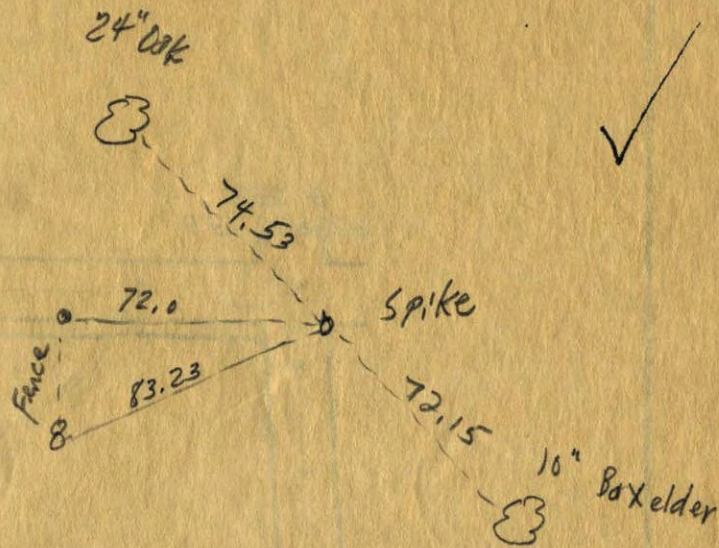
350

J. Oliver

M. R. Anderson

J. Zaoller

N 1/4 Corn Sec. 32, T 31, R 23



July 1957

Milner W. Corley