

CERTIFICATE OF LOCATION OF GOVERNMENT CORNER

County of Anoka State of Minnesota

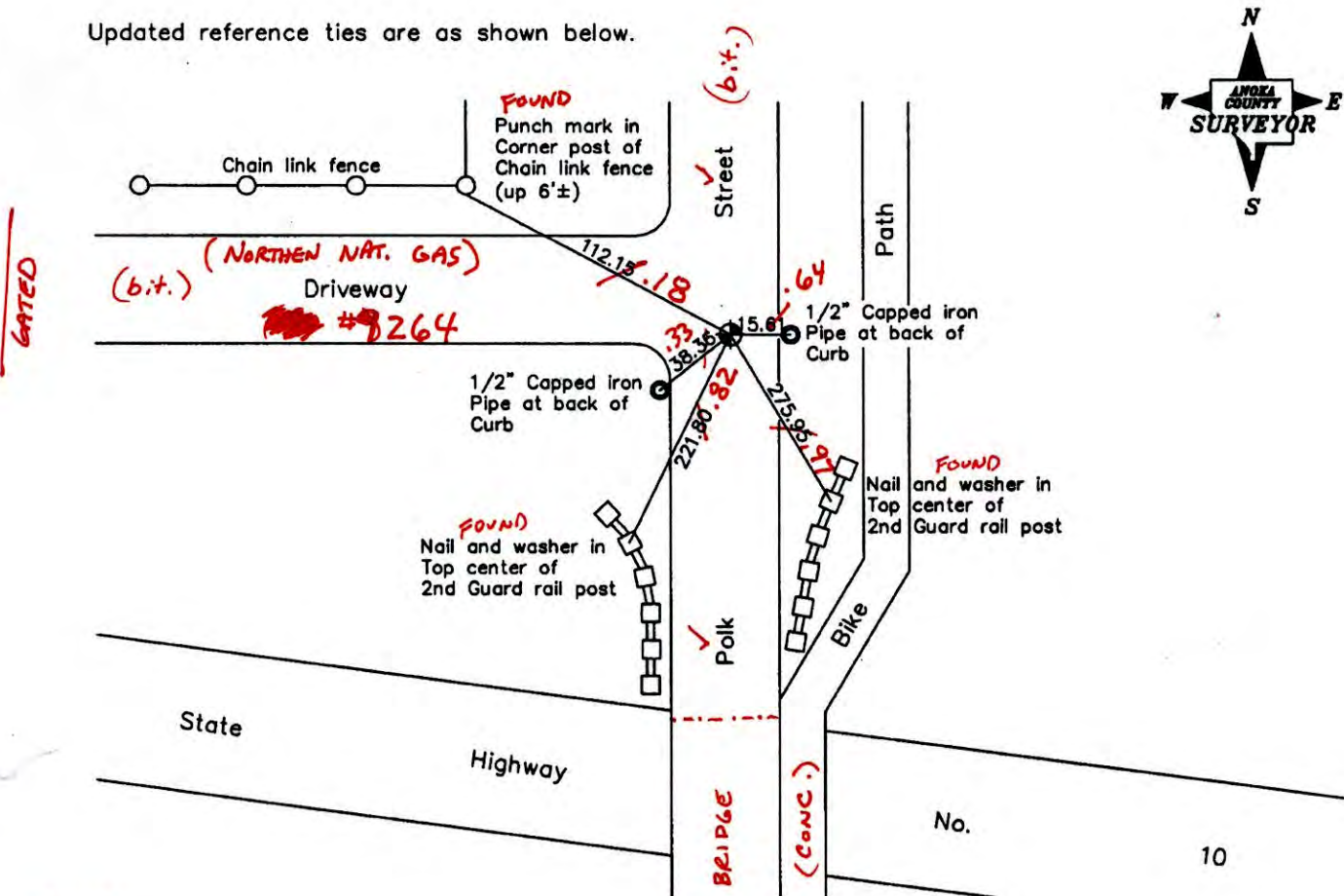
Northeast Corner of Sec. 31 Township 31 Range 23

On the 19th day of December, 1960, the described corner was evidenced by a concrete monument

and to perpetuate the location of said corner, at the exact location thereof, a permanent marker was placed consisting of a cast iron monument (7'± E. of E)

AND on the 2nd day of August, 2006, said permanent marker was found and the ties were updated

Updated reference ties are as shown below.



6-18-14
BK-55
T/T
VRS

Revised date
6/08/95
7/21/99
8/02/06

N.A.D. 1983 Coordinates (1996 Adjustment)	
County Project Coordinates	
Northing	137863.0786
Easting	505410.1241
Date	7/08/99

I hereby certify that this United States public land survey monument record is correct and complete to the best of my knowledge and belief.

Larry D. Holium Date 8/02/06
 Larry D. Holium, Anoka County Surveyor
 Minnesota License Number 18165

30Q = 0.06 N = 137863.0635 E = 505410.0792

CERTIFICATE OF LOCATION OF GOVERNMENT CORNER

County of Anoka

State of Minnesota

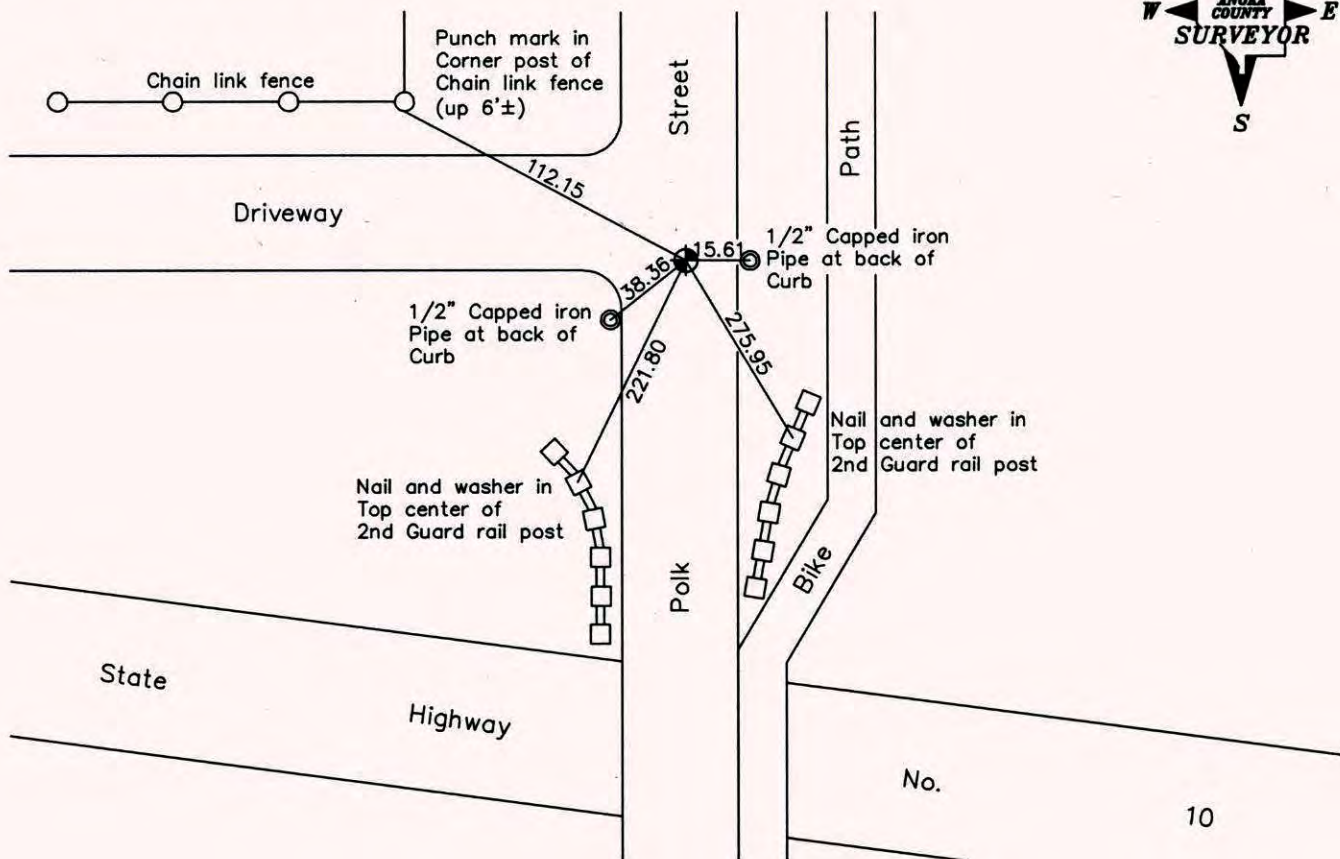
Northeast Corner of Sec. 31 Township 31 Range 23

On the 19th day of December, 1960, the described corner was evidenced by a concrete monument

and to perpetuate the location of said corner, at the exact location thereof, a permanent marker was placed consisting of a cast iron monument

AND on the 2nd day of August, 2006, said permanent marker was found and the ties were updated

Updated reference ties are as shown below.



Revised date
6/08/95
7/21/99
8/02/06

N.A.D. 1983 Coordinates (1996 Adjustment)	
County Project Coordinates	
Northing	<u>137863.0786</u>
Easting	<u>505410.1241</u>
Date	<u>7/08/99</u>

I hereby certify that this United States public land survey monument record is correct and complete to the best of my knowledge and belief.

Larry D. Hoium Date 8/02/06

Larry D. Hoium, Anoka County Surveyor

Minnesota License Number 18165

CERTIFICATE OF LOCATION OF GOVERNMENT CORNER

County of Anoka

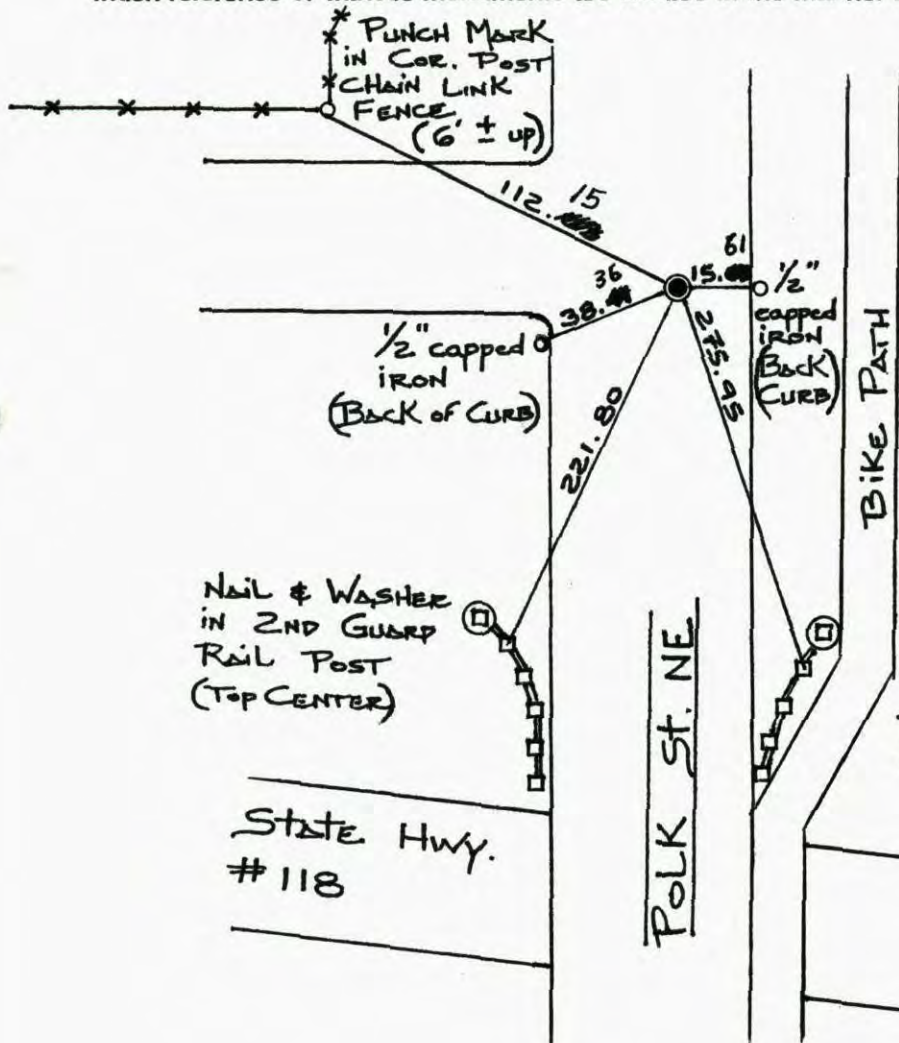
State of Minnesota

NORTHEAST Corner of Sec. 31 Township 31 Range 23

I hereby certify that on the 19TH day of DECEMBER 1960 I found the described corner which was evidenced by CONCRETE MONUMENT

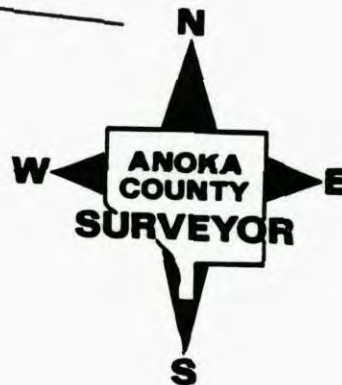
and I further certify that to perpetuate the location of said corner, I did, at the exact location thereof, place a permanent marker consisting of CAST IRON MONUMENT

which reference or witness monuments are located in the manner following:



N.A.D.	1983	Co-ordinates
County Project		Co-ordinates
Northing	<u>137863.0786</u>	
Easting	<u>505410.1241</u>	
State Plane Co-ordinates	Y _____	
	X _____	
Date	<u>7/08/99</u>	

Revised date	Revised date	Revised date
<u>03-02-83</u>		
<u>06-30-83</u>		
<u>05-30-86</u>		
<u>06-20-90</u>		
<u>06-08-95</u>		
<u>07-21-99</u>		
<u>8-2-06</u>		



CERTIFICATE OF LOCATION OF GOVERNMENT CORNER

County of Anoka

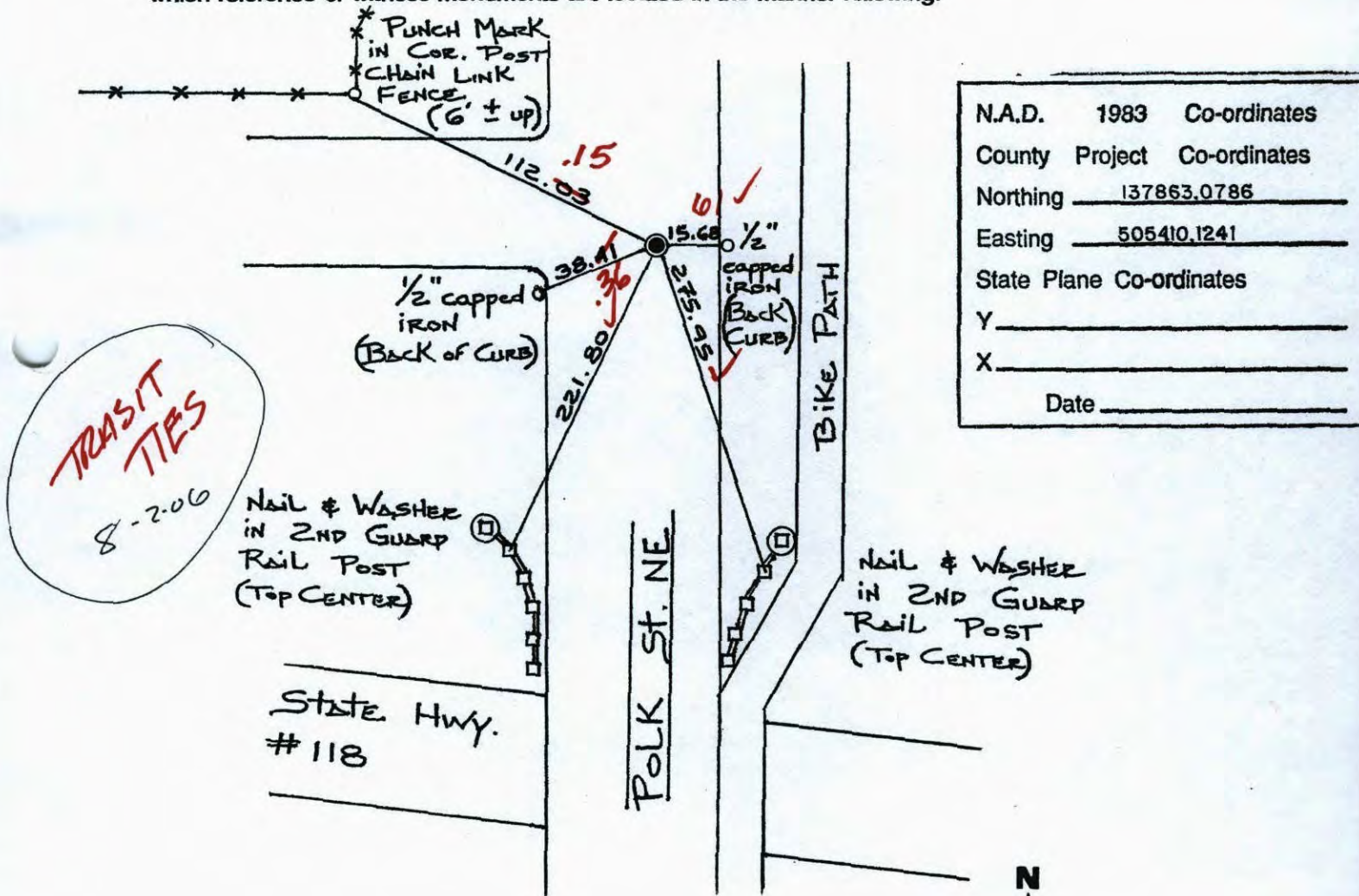
State of Minnesota

NORTHEAST Corner of Sec. 31 Township 31 Range 23

I hereby certify that on the 19TH day of DECEMBER 1960 I found the described corner which was evidenced by CONCRETE MONUMENT

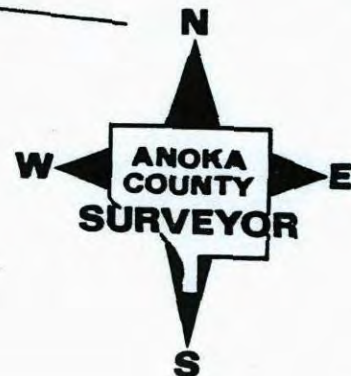
and I further certify that to perpetuate the location of said corner, I did, at the exact location thereof, place a permanent marker consisting of CAST IRON MONUMENT

which reference or witness monuments are located in the manner following:



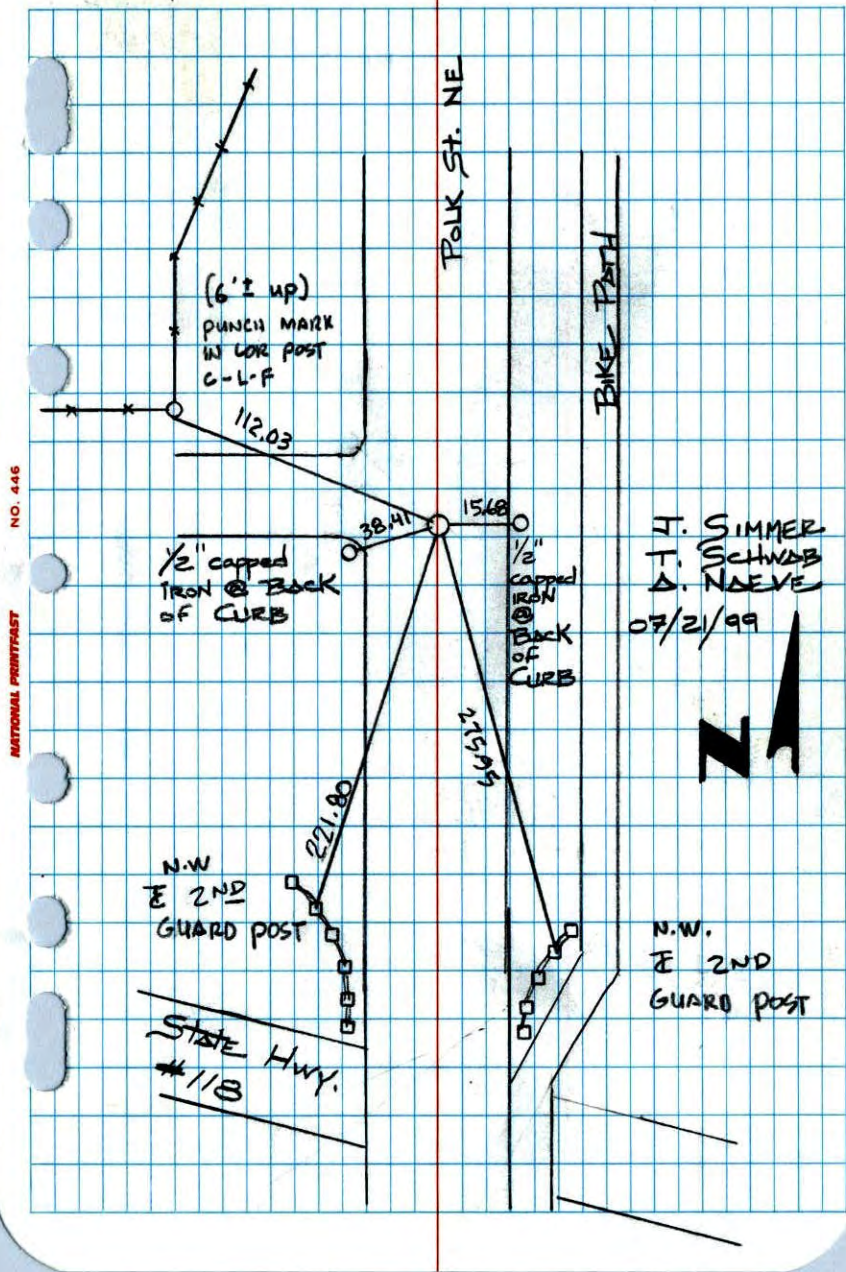
N.A.D.	1983	Co-ordinates
County	Project	Co-ordinates
Northing		<u>137863.0786</u>
Easting		<u>505410.1241</u>
State Plane Co-ordinates		
Y		_____
X		_____
Date _____		

Revised date	Revised date	Revised date
<u>03-02-83</u>		
<u>06-30-83</u>		
<u>05-30-86</u>		
<u>06-20-90</u>		
<u>06-08-95</u>		
<u>07-21-99</u>		



NORTHEAST COR. OF
 SEC. 31, T31, R23
 REPLACED & RETIED C.I.M.

(106)

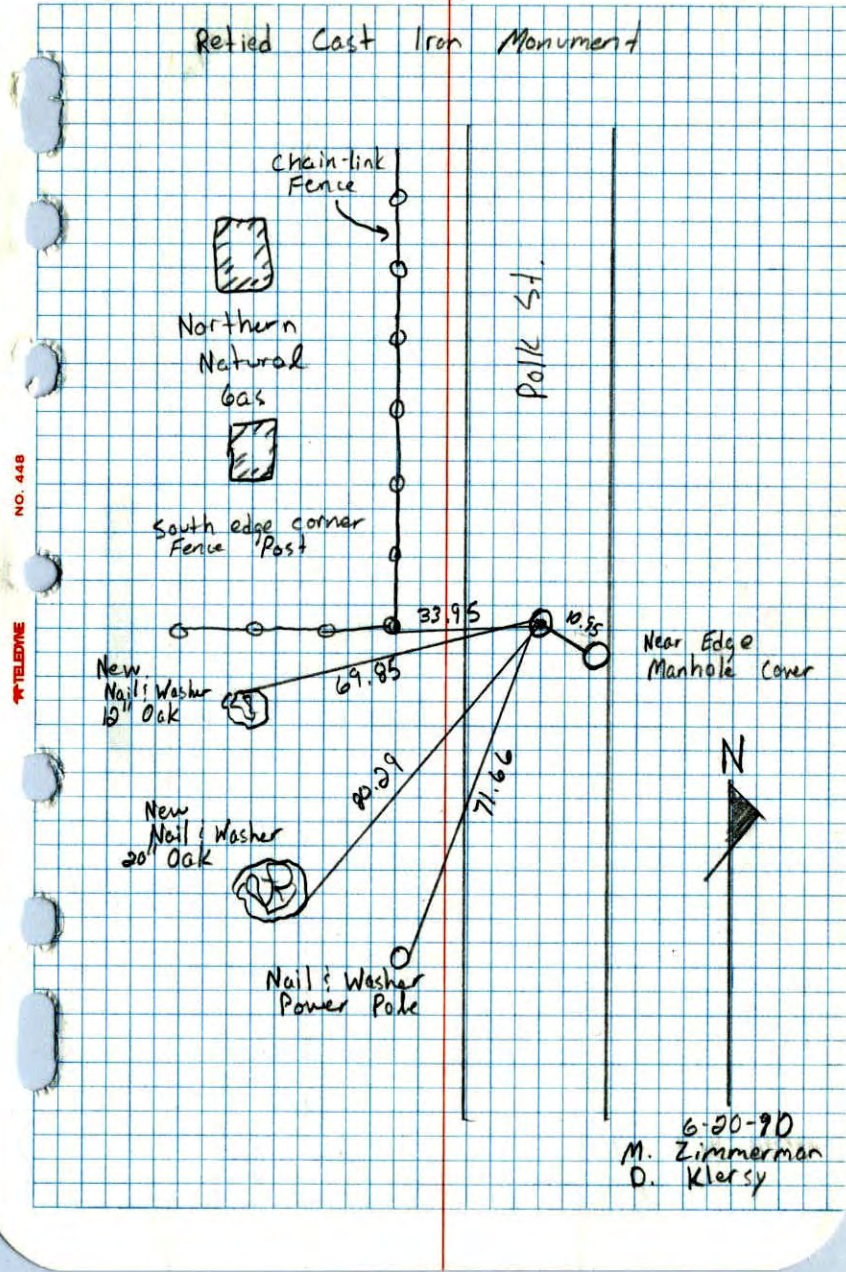


NO. 446 NATIONAL HIGHWAY TELEPHONE

106

Northeast Corner Sec. 31 T31 R23

Retied Cast Iron Monument

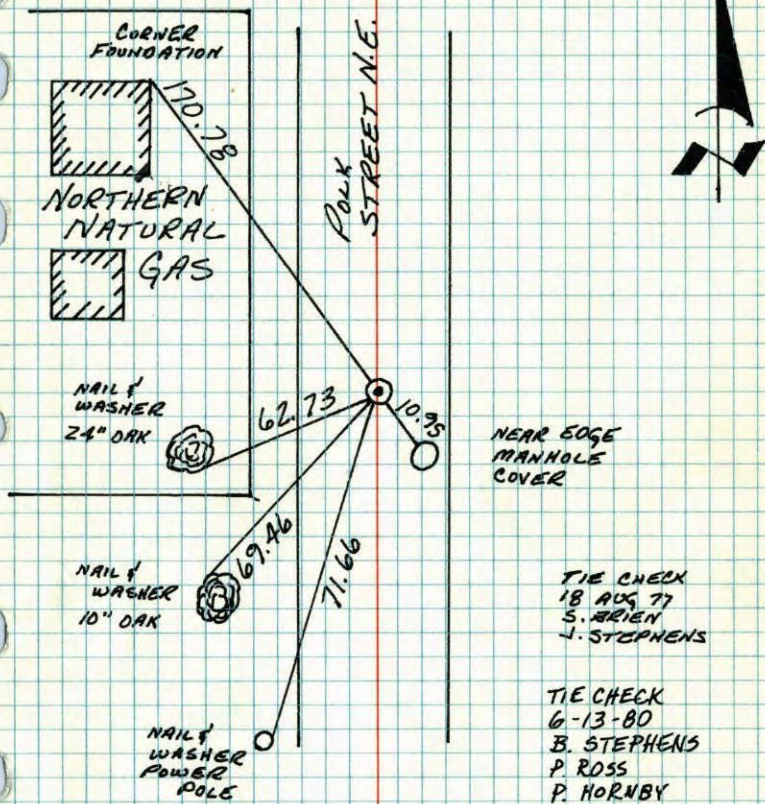


NO. 448 NATIONAL HIGHWAY TELEPHONE

6-20-90
 M. Zimmerman
 D. Klersy

N. E. CORNER SECTION 31-T31-R23

SET CAST IRON MONUMENT AT LOCATION OF BROKEN CONCRETE MONUMENT. SET PK'S 2.00' NORTH AND EAST.
12 JUN 64



TIE CHECK
18 AUG 77
S. BRIEN
J. STEPHENS

TIE CHECK
6-13-80
B. STEPHENS
P. ROSS
P. HORNBY

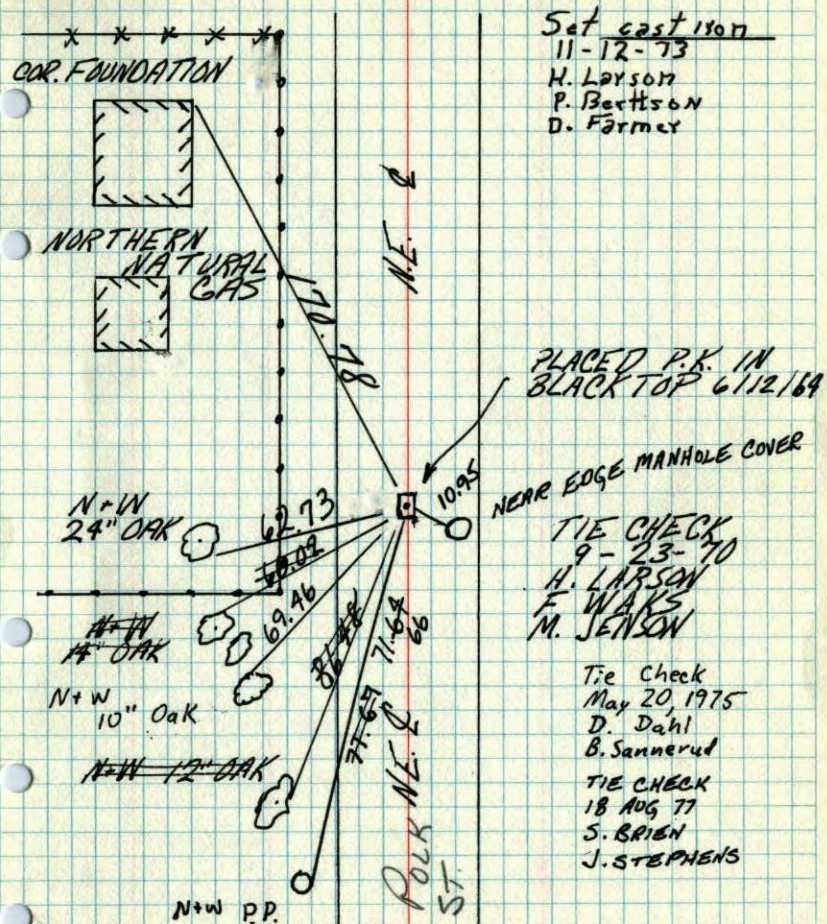
TEMPERATURE CORRECTED AND HORIZONTALLY TAPED MEASUREMENTS
ROLAND W. ANDERSON
COUNTY SURVEYOR
ANOKA COUNTY, MINNESOTA

NE COR SEC. 31 T31 R23

CONC. MON. DOWN 1.5' WITH TOP

BROKEN OFF - IRON ON NORTH EDGE

SET PK'S 2.00' NORTH & EAST



Set cast iron
11-12-73
H. Larson
P. Bertson
D. Farmer

PLACED P.K. IN
BLACK TOP 6/12/69

NEAR EDGE MANHOLE COVER

TIE CHECK
9-23-70
H. LARSON
F. WAKS
M. JENSON

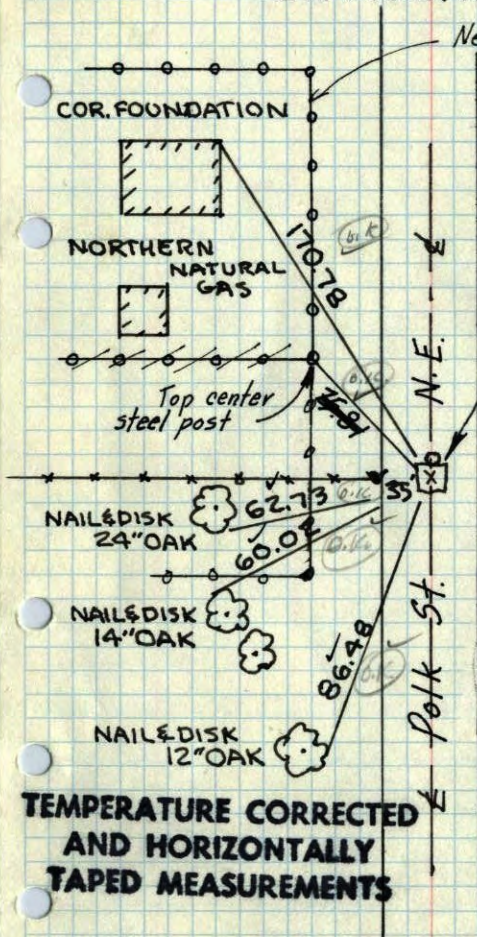
Tie Check
May 20, 1975
D. Dahl
B. Sannerud

TIE CHECK
18 AUG 77
S. BRIEN
J. STEPHENS

TEMPERATURE CORRECTED AND HORIZONTALLY TAPED MEASUREMENTS

ROLAND W. ANDERSON
COUNTY SURVEYOR
ANOKA COUNTY, MINNESOTA

N.E. COR. SEC. 31, T. 31, R. 23
 CONC. MON. DOWN 1.5' WITH
 TOP BROKEN OFF - IRON
 ON NORTH EDGE



New Fence
 Tie Check
 9-23-70
 H. Larson
 F. WAKS
 M. Jensen

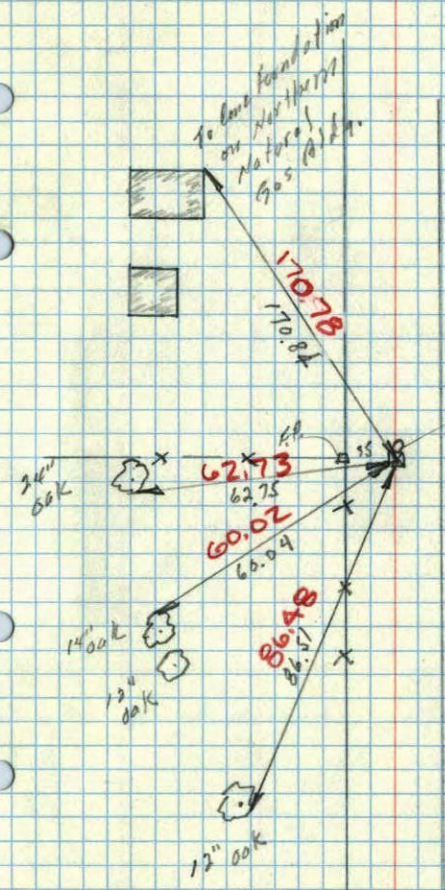
Placed P.K. in
 blacktop 6/12/64
 DEC. 19, 1960
 R. FREEMAN
 M. D. ANDERSON
 Retire 6/12/64
 M. D. Anderson
 R. Carlson
 Tie Check
 July 29, 1968
 H. Larson
 G. Elsberry

Tie Check
 3/18/69
 Sewer Constr.

TEMPERATURE CORRECTED
 AND HORIZONTALLY
 TAPED MEASUREMENTS

ROLAND W. ANDERSON
 COUNTY SURVEYOR
 ANOKA COUNTY, MINNESOTA

N.E. Cor Sec 31-31-23 found Conc
 Mon. down 1.5' with 3/4" iron N. Edge
 In L Road. Top Broken off



TEMP. CORRECTED
 +10°