

CERTIFICATE OF LOCATION OF GOVERNMENT CORNER
 County of Anoka State of Minnesota

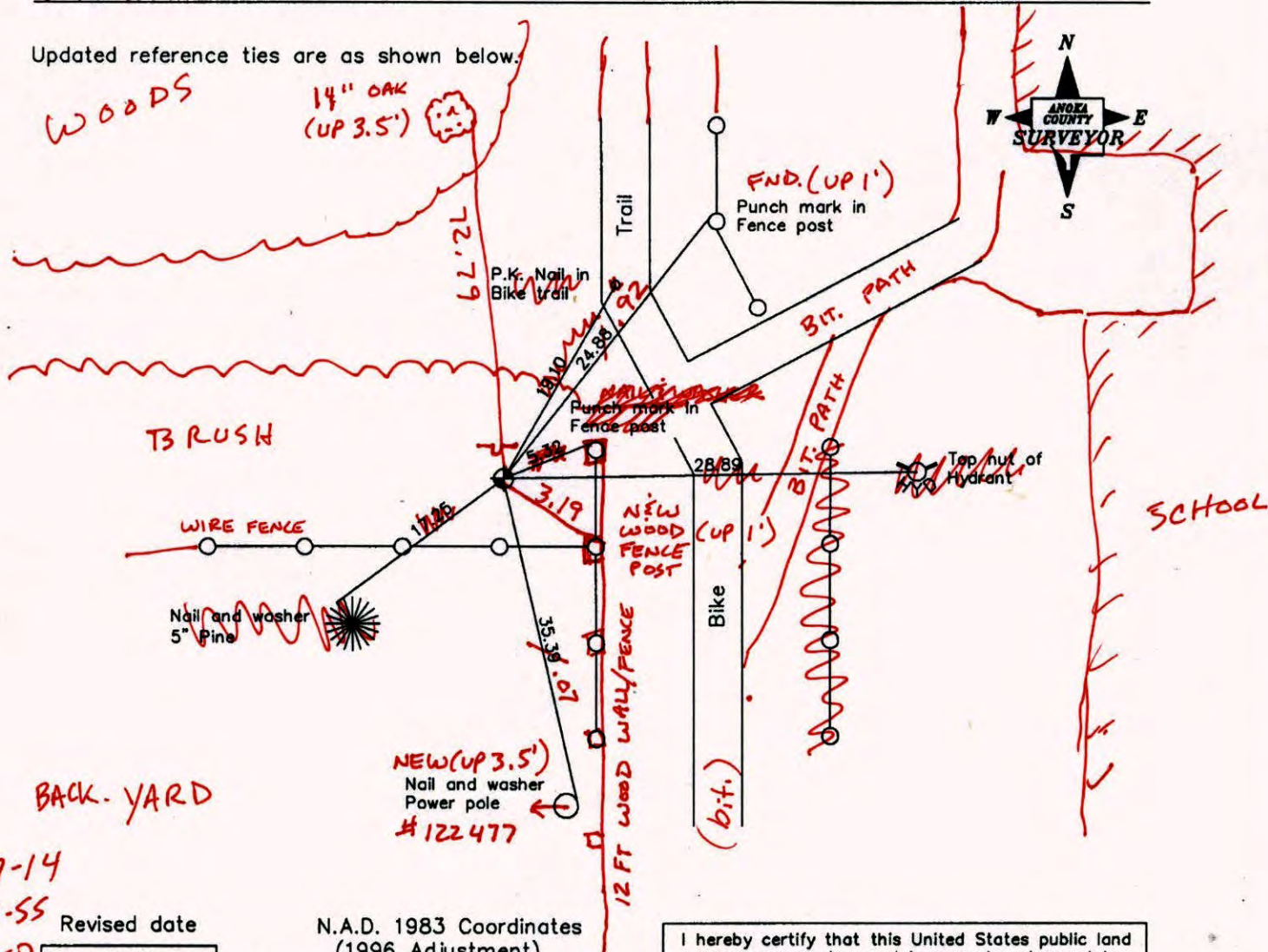
North 1/4 Corner of Sec. 31 Township 31 Range 23

On the 19th day of December, 1990, the described corner was evidenced by a concrete monument

and to perpetuate the location of said corner, at the exact location thereof, a permanent marker was placed consisting of a cast iron monument with a sign and post 0.5' north of monument **FACING N.**

AND on the 2nd day of August, 2006, said permanent marker was found and the ties were updated

Updated reference ties are as shown below.



6-17-14
 BK-SS
 TAPED

Revised date
6/27/95
6/29/99
8/02/06

N.A.D. 1983 Coordinates (1996 Adjustment)	
County Project Coordinates	
Northing	137849.9453
Easting	502752.6625
Date	6/29/99

I hereby certify that this United States public land survey monument record is correct and complete to the best of my knowledge and belief.

Larry D. Hoium Date 8/02/06
 Larry D. Hoium, Anoka County Surveyor
 Minnesota License Number 18165

CERTIFICATE OF LOCATION OF GOVERNMENT CORNER

County of Anoka

State of Minnesota

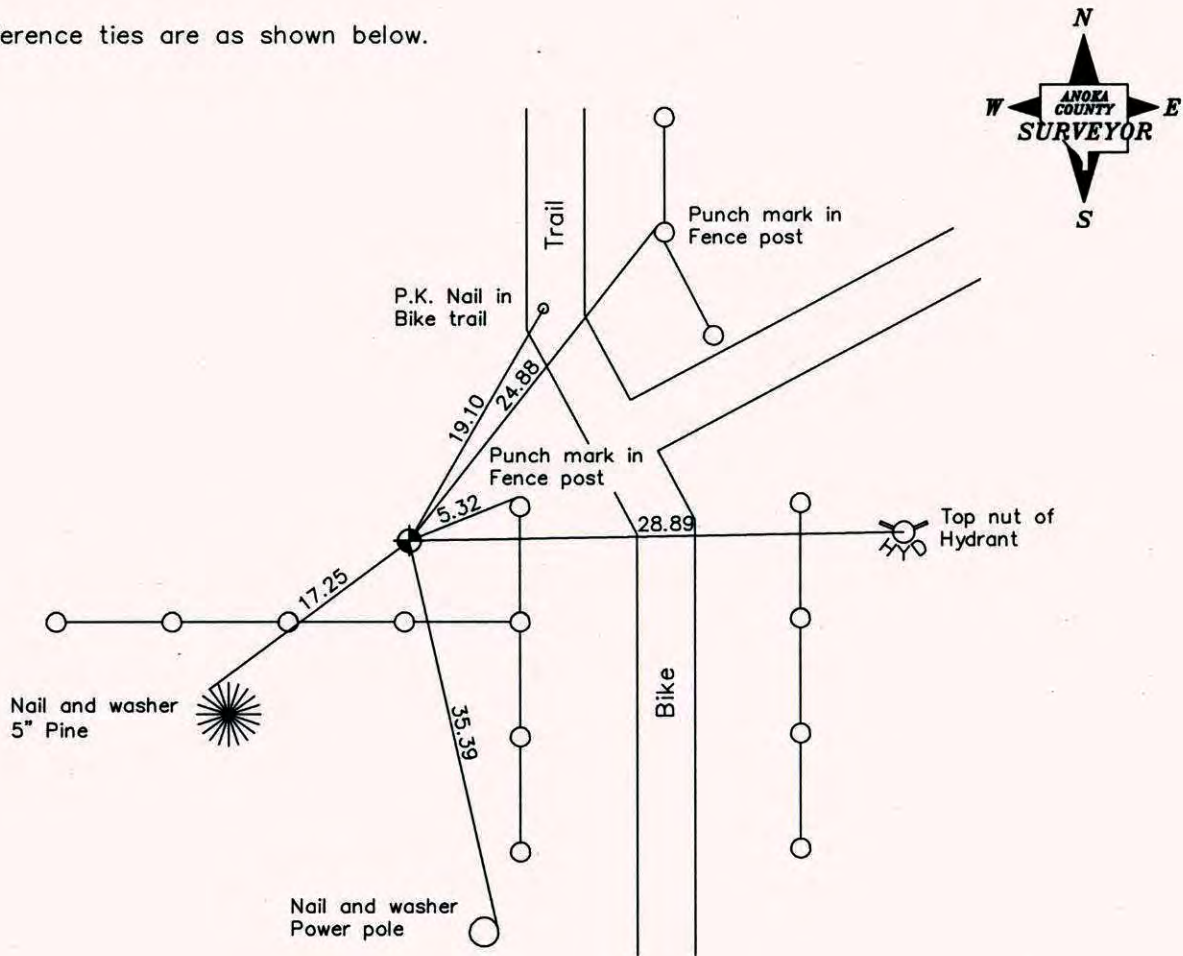
North $\frac{1}{4}$ Corner of Sec. 31 Township 31 Range 23

On the 19th day of December, 1990, the described corner was evidenced by a concrete monument

and to perpetuate the location of said corner, at the exact location thereof, a permanent marker was placed consisting of a cast iron monument with a sign and post 0.5' north of monument

AND on the 2nd day of August, 2006, said permanent marker was found and the ties were updated

Updated reference ties are as shown below.



Revised date
6/27/95
6/29/99
8/02/06

N.A.D. 1983 Coordinates (1996 Adjustment)	
County Project Coordinates	
Northing	<u>137849.9453</u>
Easting	<u>502752.6625</u>
Date	<u>6/29/99</u>

I hereby certify that this United States public land survey monument record is correct and complete to the best of my knowledge and belief.

Larry D. Hoium Date 8/02/06

Larry D. Hoium, Anoka County Surveyor

Minnesota License Number 18165

CERTIFICATE OF LOCATION OF GOVERNMENT CORNER

County of Anoka

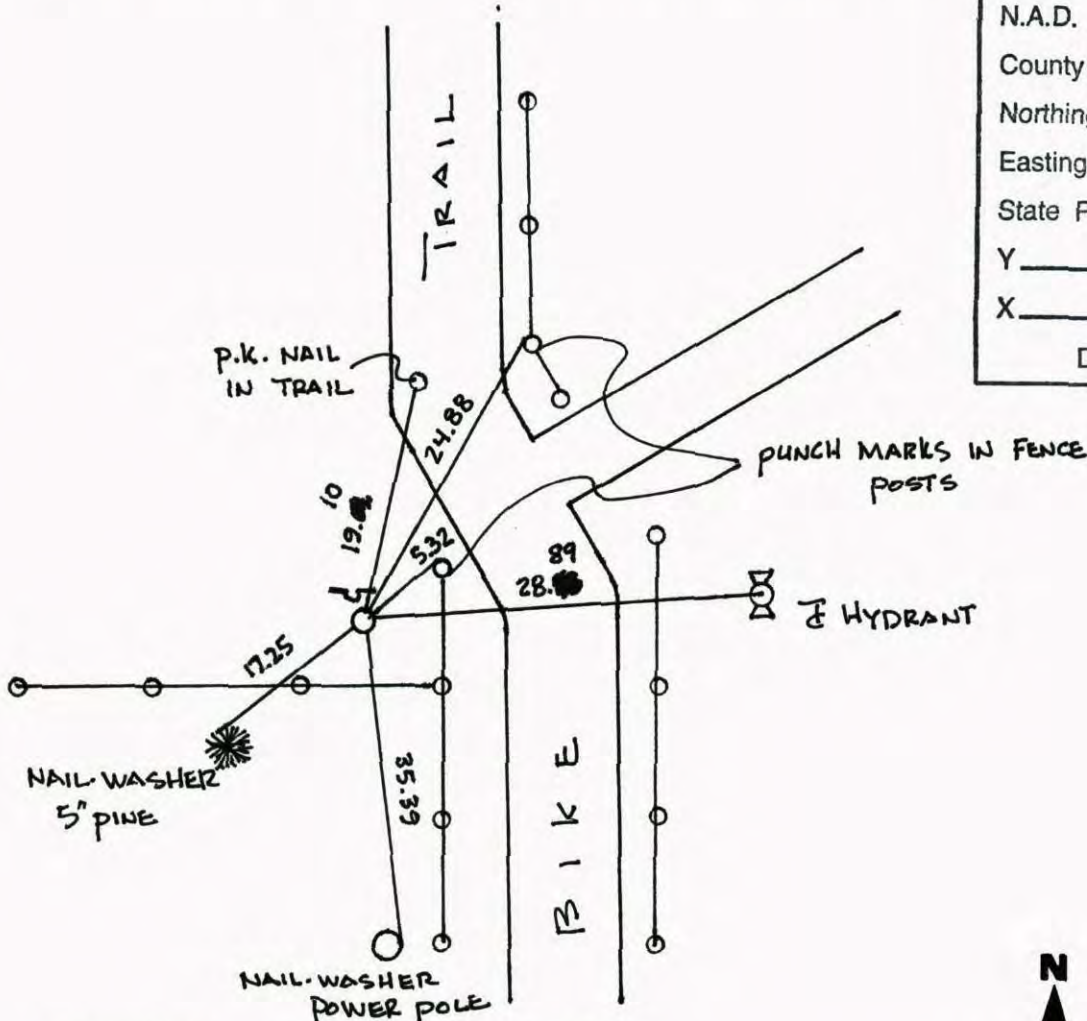
State of Minnesota

NORTH 1/4 Corner of Sec. 31 Township 31 Range 23

I hereby certify that on the 19TH day of DECEMBER, 1990, I found the described corner which was evidenced by CONCRETE MONUMENT

and I further certify that to perpetuate the location of said corner, I did, at the exact location thereof, place a permanent marker consisting of CAST IRON MONUMENT
SIGN & POST 0.5' NORTH OF C.I.M.

which reference or witness monuments are located in the manner following:



N.A.D.	1983	Co-ordinates
County	Project	Co-ordinates
Northing	<u>137849.9453</u>	
Easting	<u>502752.6625</u>	
State Plane	Co-ordinates	
Y	_____	
X	_____	
Date	<u>6/29/99</u>	

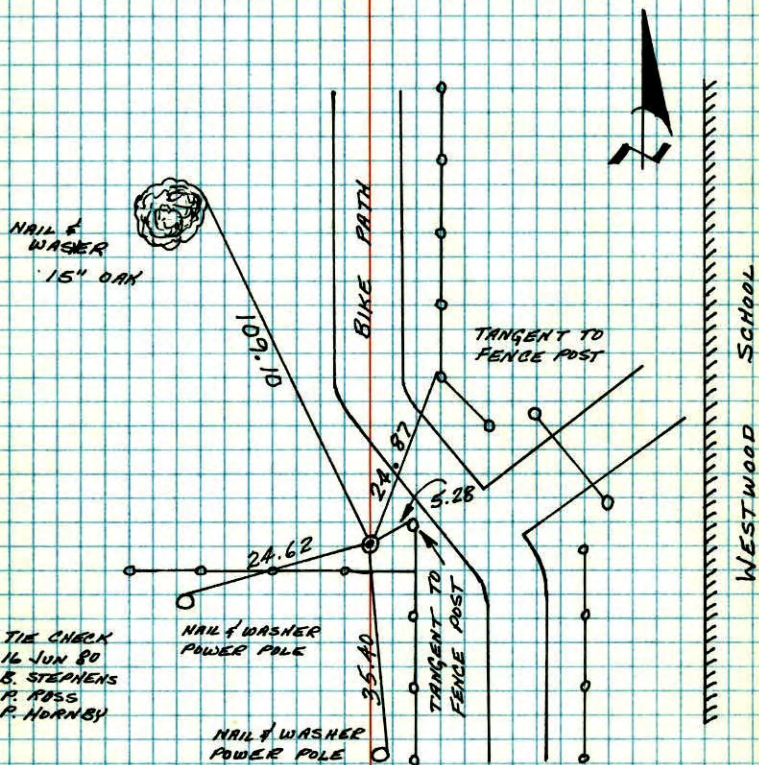
Revised date	Revised date	Revised date
7-30-90		
6-27-95		
6-29-99		
8-2-06		



N¹/₄ CORNER SECTION 31-T31-R23

CONCRETE MONUMENT WAS REMOVED BY SEWER CONSTRUCTION.
REPLACED WITH CAST IRON MONUMENT DOWN .6"². CAST IRON
SLIGHTLY NORTH OF EAST-WEST FENCE.

28 JUN 65
M. O. ANDERSON
J. DUNLOP



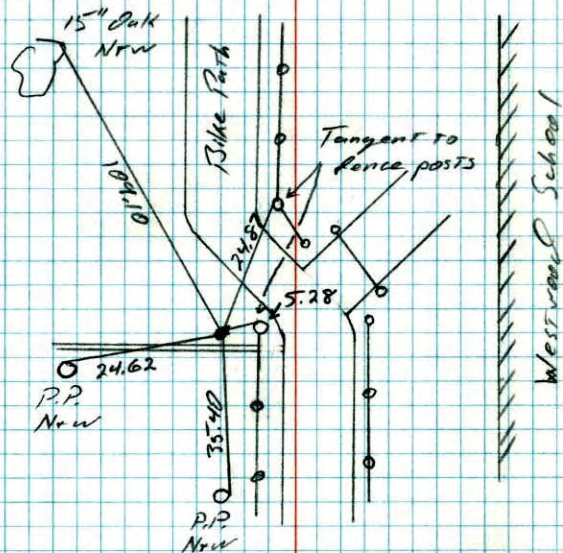
TEMPERATURE CORRECTED
AND HORIZONTALLY
TAPED MEASUREMENTS

ROLAND W. ANDERSON
COUNTY SURVEYOR
ANOKA COUNTY, MINNESOTA

N¹/₄ Cor. Sec. 31 T-31 R-23

Cast iron monument down .6". Slightly
north of east-west fence.

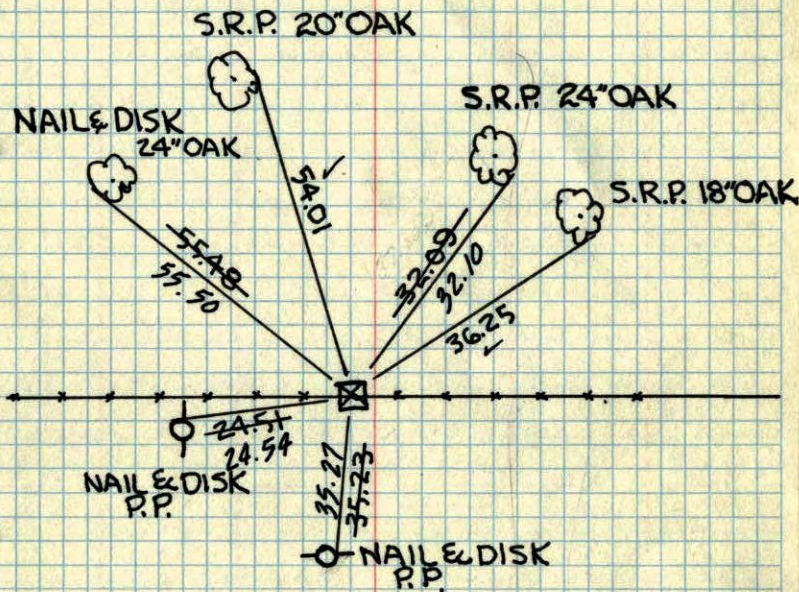
6-16-80 MS
B. Stephens
P. Ross
P. Hornby



TEMPERATURE CORRECTED
AND HORIZONTALLY
TAPED MEASUREMENTS

ROLAND W. ANDERSON
COUNTY SURVEYOR
ANOKA COUNTY, MINNESOTA

N $\frac{1}{4}$ COR-SEC. 31, T. 31, R. 23
 CONC. MON. AT SURFACE WITH
 TOP BROKEN OFF—UNDER
 E & W. FENCE



TEMPERATURE CORRECTED
 AND HORIZONTALLY
 TAPED MEASUREMENTS

DEC. 19, 1960

R. FREEMAN
 M. D. ANDERSON

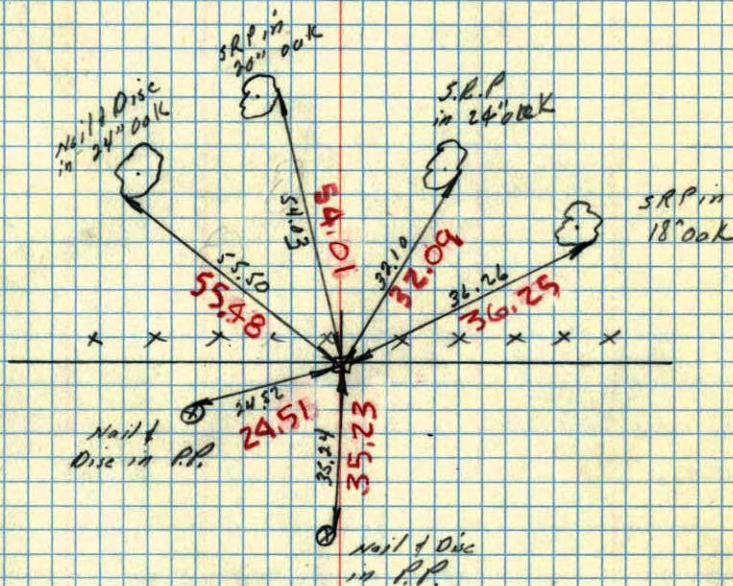
Retie 6/12/64

M. D. Anderson
 R. Carlson

ROLAND W. ANDERSON
 COUNTY SURVEYOR
 ANOKA COUNTY, MINNESOTA

19 Dec 1960
 Freeman - skip
 + 8°

N $\frac{1}{4}$ Cor. Sec. 31-31-23
 Found Conc. Mon. at Surface. Under
 E & W. Fence - Top Broken

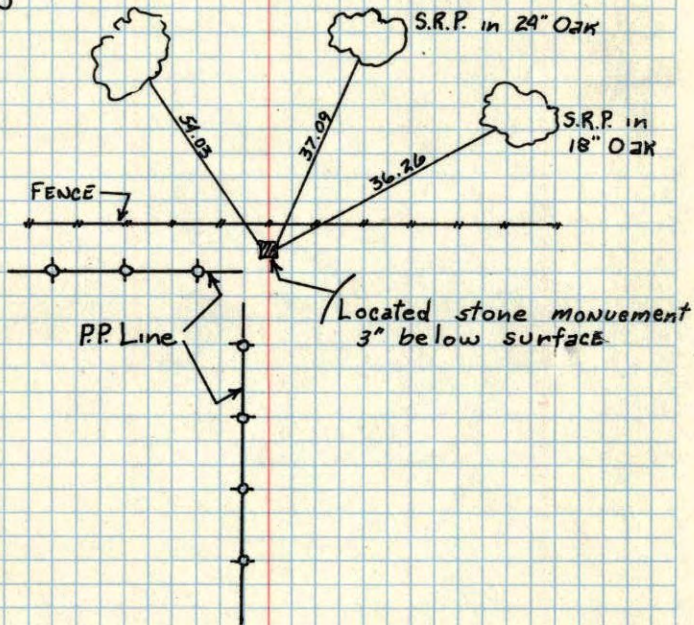


TEMP. CORRECTED
 IN RED
 + 8°

N 1/4 COR. SEC. 31 T 31 R 23

39

WOODS



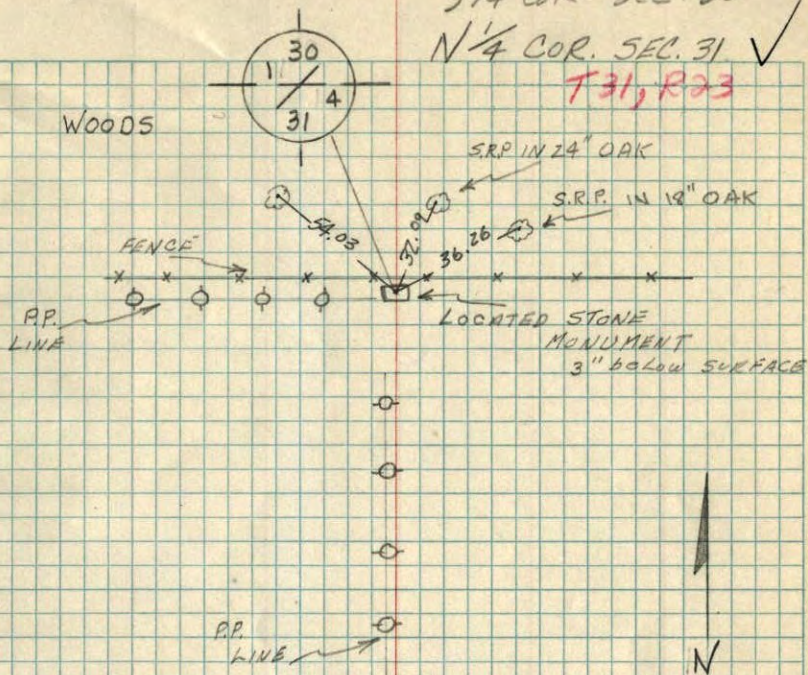
Minn. Hwy. Dept.
1958

S 1/4 COR. SEC. 30

N 1/4 COR. SEC. 31 ✓

T 31, R 23

WOODS



P.P. LINE

N.W. COR. SEC. 31 ✓



S.R.P. IN 8" OAK

S.R.P. IN P.P.

NAILS DISC. IN FACE OF 14" OAK

1" IRON PIN 1/2" BELOW SURFACE