

CERTIFICATE OF LOCATION OF GOVERNMENT CORNER

County of Anoka State of Minnesota

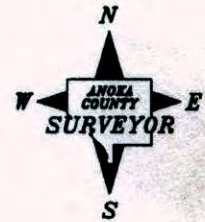
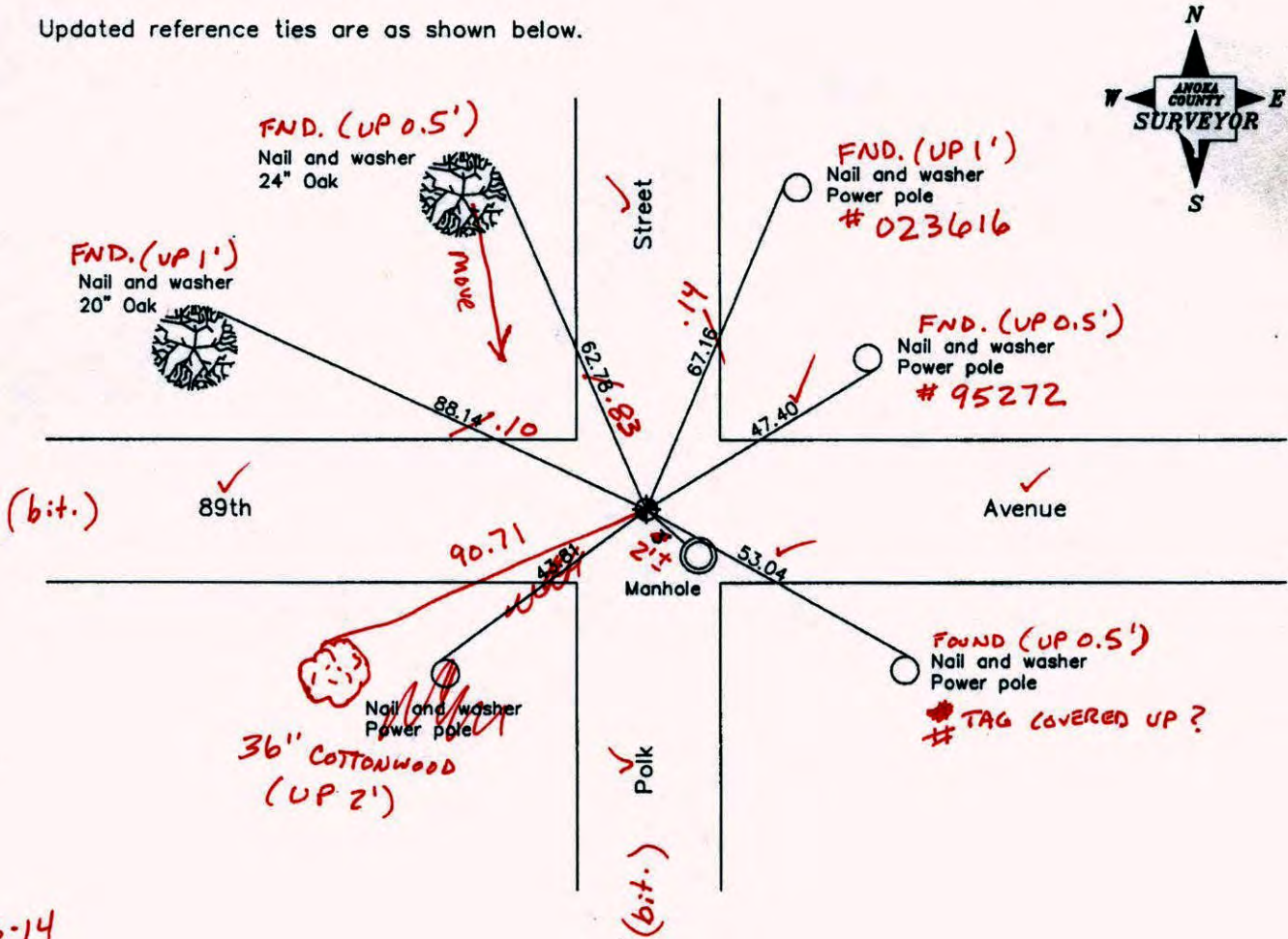
East $\frac{1}{4}$ Corner of Sec. 31 Township 31 Range 23

On the 21st day of June, 1960, the described corner was evidenced by a concrete monument

and to perpetuate the location of said corner, at the exact location thereof, a permanent marker was placed consisting of a cast iron monument

AND on the 2nd day of August, 2006, said permanent marker was found and the ties were updated

Updated reference ties are as shown below.



6-18-14
BK-SS
T/A
URS

Revised date
12/10/98
11/05/01
8/02/06

N.A.D. 1983 Coordinates (1996 Adjustment)	
County Project Coordinates	
Northing	135204.9207
Easting	505411.3751
Date	12/10/98

I hereby certify that this United States public land survey monument record is correct and complete to the best of my knowledge and belief.

Larry D. Hoium Date 8/02/06

Larry D. Hoium, Anoka County Surveyor

Minnesota License Number 18165

3DQ = 0.06 N = 135204.9442 E = 505411.3178

CERTIFICATE OF LOCATION OF GOVERNMENT CORNER

*County of Anoka

State of Minnesota

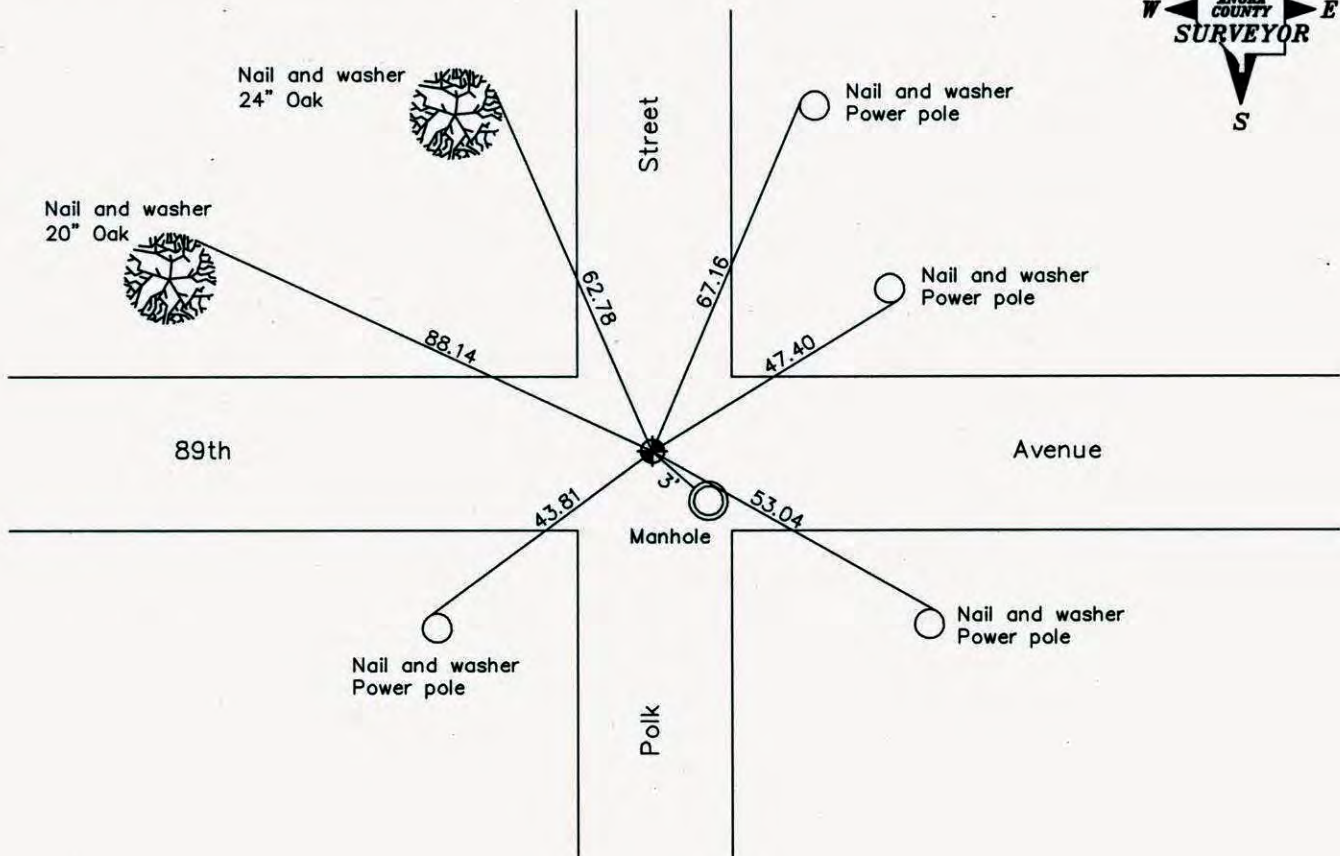
East 1/4 Corner of Sec. 31 Township 31 Range 23

On the 21st day of June, 1960, the described corner was evidenced by a concrete monument

and to perpetuate the location of said corner, at the exact location thereof, a permanent marker was placed consisting of a cast iron monument

AND on the 2nd day of August, 2006, said permanent marker was found and the ties were updated

Updated reference ties are as shown below.



Revised date
12/10/98
11/05/01
8/02/06

N.A.D. 1983 Coordinates (1996 Adjustment)	
County Project Coordinates	
Northing	<u>135204.9207</u>
Easting	<u>505411.3751</u>
Date	<u>12/10/98</u>

I hereby certify that this United States public land survey monument record is correct and complete to the best of my knowledge and belief.

Larry D. Hoium Date, 8/02/06

Larry D. Hoium, Anoka County Surveyor

Minnesota License Number 18165

CERTIFICATE OF LOCATION OF GOVERNMENT CORNER

County of Anoka

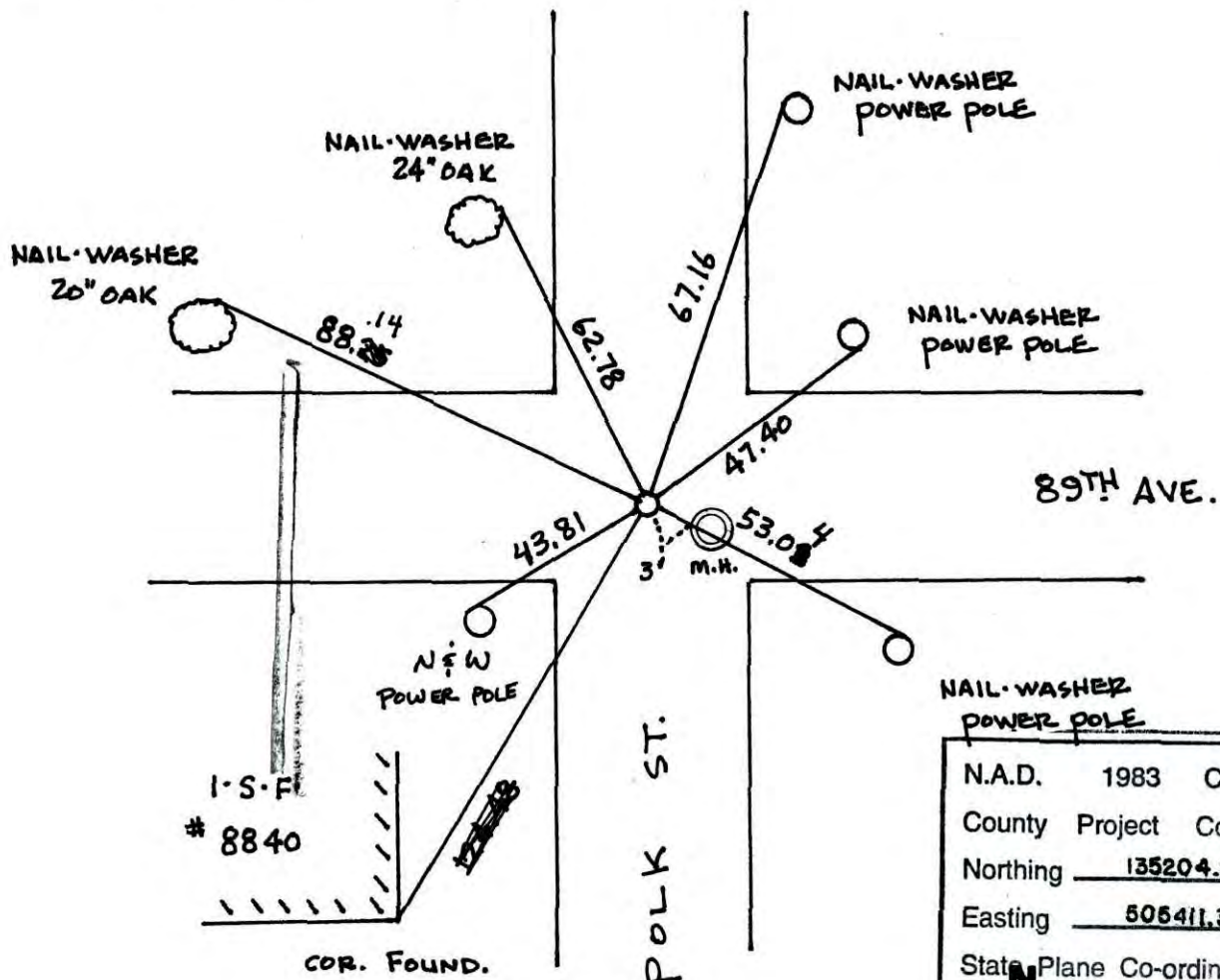
State of Minnesota

EAST 1/4 Corner of Sec. 31 Township 31 Range 23

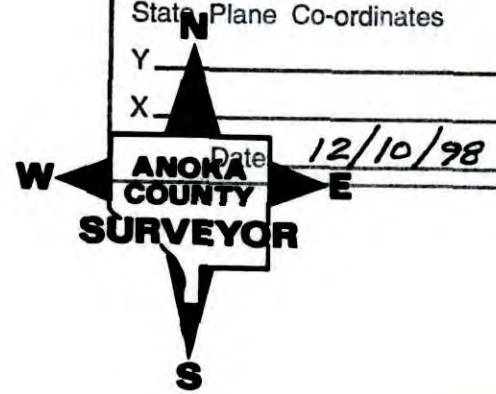
I hereby certify that on the 21ST day of JUNE, 19 60, I found the described corner which was evidenced by CONCRETE MONUMENT

and I further certify that to perpetuate the location of said corner, I did, at the exact location thereof, place a permanent marker consisting of CAST IRON MONUMENT

which reference or witness monuments are located in the manner following:



N.A.D.	1983	Co-ordinates
County	Project	Co-ordinates
Northing		<u>135204.9207</u>
Easting		<u>505411.3751</u>
State Plane Co-ordinates		
Y	_____	
X	_____	



Revised date	Revised date	Revised date
<u>5-30-86</u>		
<u>5-7-90</u>		
<u>6-20-90</u>		
<u>6-8-95</u>		
<u>12-10-98</u>		
<u>11-5-01</u>		
<u>8-2-06</u>		

CERTIFICATE OF LOCATION OF GOVERNMENT CORNER

County of Anoka

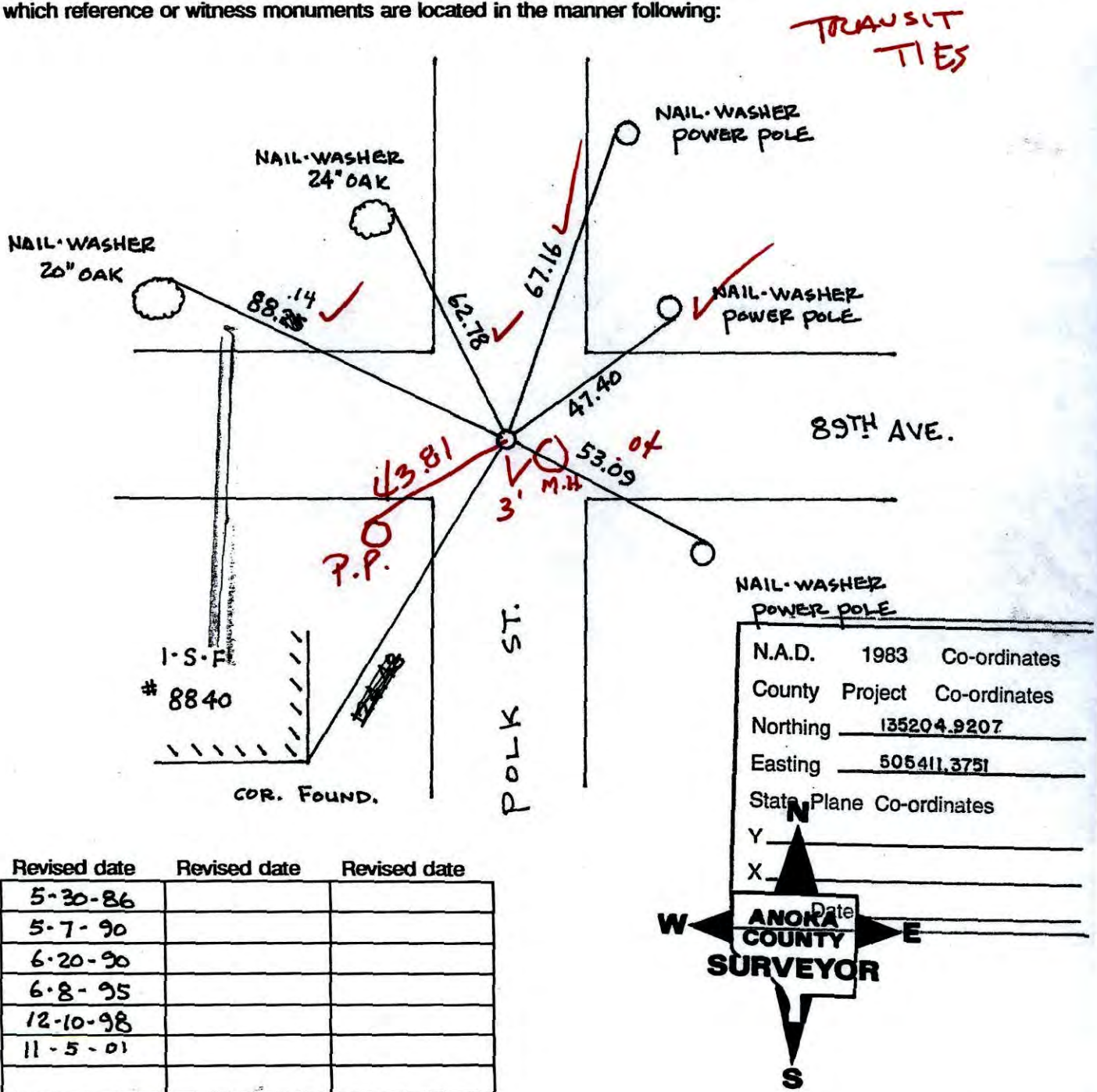
State of Minnesota

EAST 1/4 Corner of Sec. 31 Township 31 Range 23

I hereby certify that on the 21ST day of JUNE, 19 60, I found the described corner which was evidenced by CONCRETE MONUMENT

and I further certify that to perpetuate the location of said corner, I did, at the exact location thereof, place a permanent marker consisting of CAST IRON MONUMENT

which reference or witness monuments are located in the manner following:

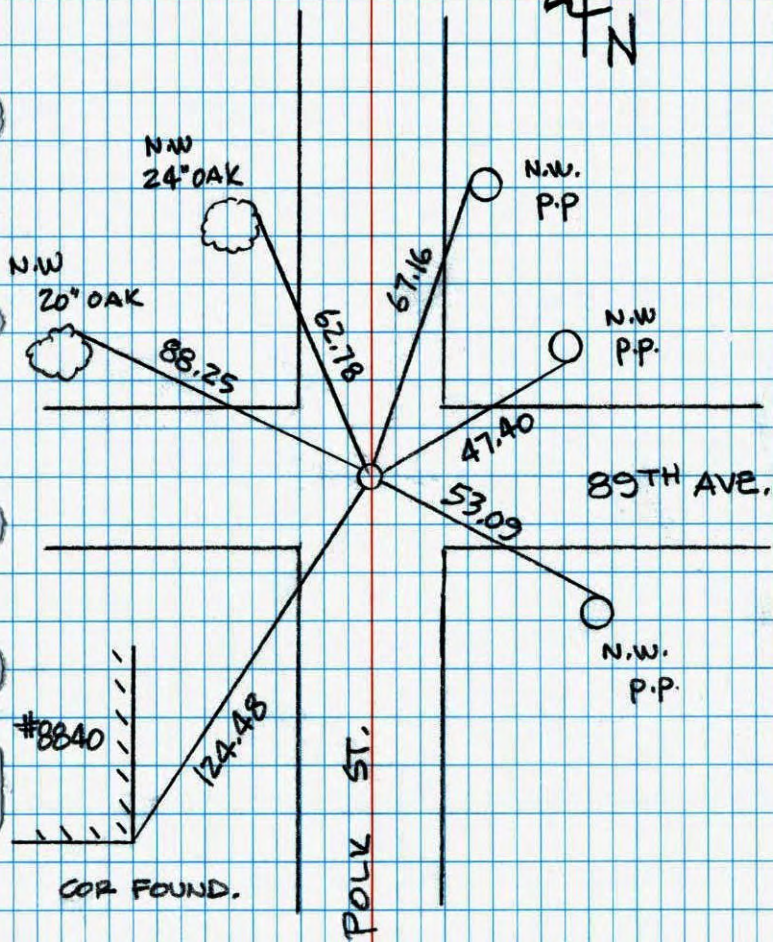


EAST 1/4 COR. SEC. 31 T31 R23

RETIED CAST IRON MONUMENT

12-10-98
J. SIMMER
B. KLEMZ

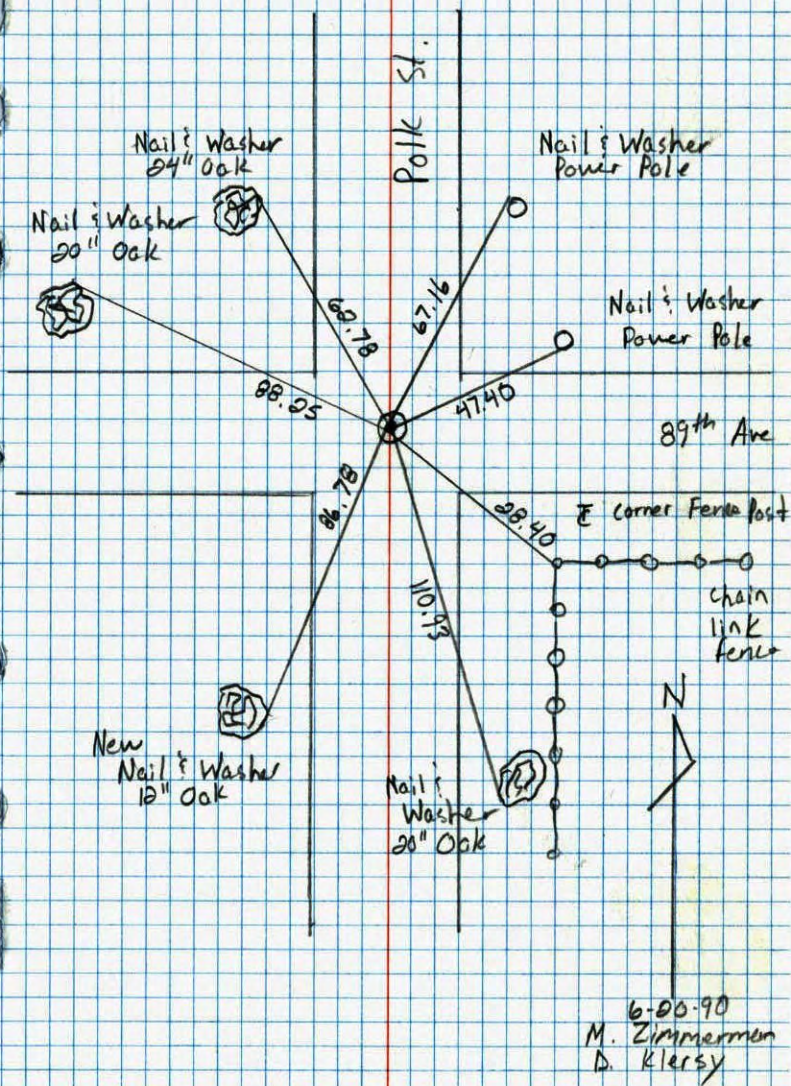
NATIONAL PRINTFAST
NO. 448



East 1/4 Corner Sec. 31 T31 R23

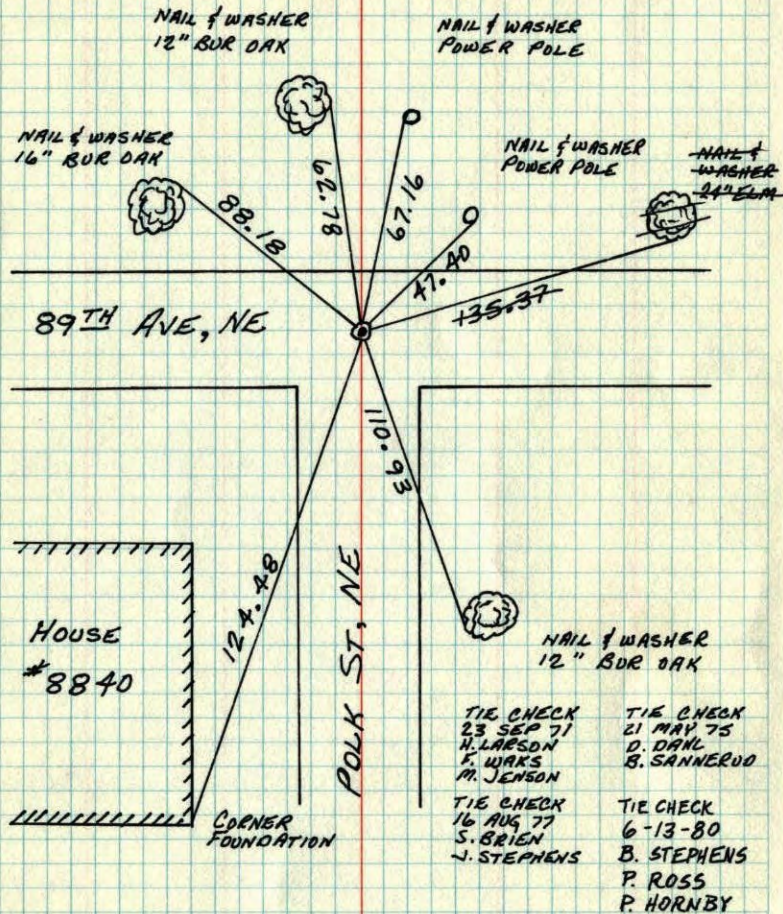
Retied Cast Iron Monument

NATIONAL PRINTFAST
NO. 448



E 1/4 CORNER SEC. 31-T31-R23

CONCRETE MONUMENT DOWN .7'. CAST IRON MONUMENT IN PLACE. PK'S 2.00' NORTH AND EAST.

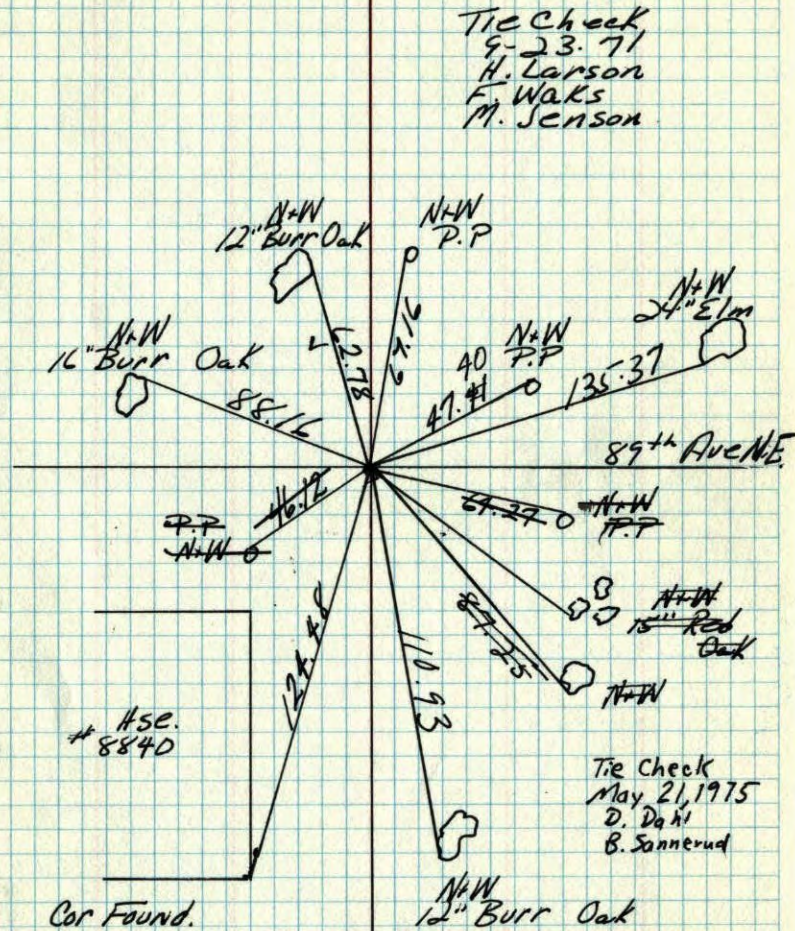


TEMPERATURE CORRECTED AND HORIZONTALLY TAPED MEASUREMENTS

ROLAND W. ANDERSON
COUNTY SURVEYOR
ANOKA COUNTY, MINNESOTA

E 1/4 Cor Sec 31 T 31 R 23

Conc. Mon. down .7'
Cast Iron Monument in place
Replaced P.K. N+E. 2.00'



ROLAND W. ANDERSON
COUNTY SURVEYOR
ANOKA COUNTY, MINNESOTA

TEMPERATURE CORRECTED AND HORIZONTALLY TAPED MEASUREMENTS

E 1/4 Cor. Sec 31, T31, R23

Conc. Monument
Down 7'
~~Bent Iron Pipe on West Side~~

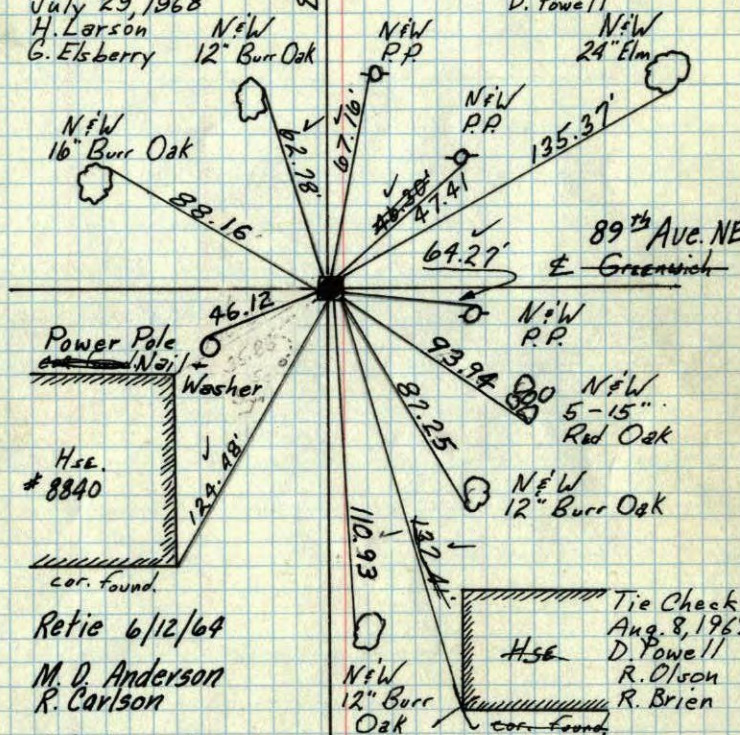
Cast Iron Monument
in place

August 28, 1967
D. Potter

Tie Check
July 29, 1968
H. Larson
G. Elsberry

TEMPERATURE CORRECTED
AND HORIZONTALLY
TAPED MEASUREMENTS

Sept. 19, 1966
M.D. Anderson
D. Powell



Power Pole
N.W. Washer

Hse.
#8840

Retie 6/12/64

M. D. Anderson
R. Carlson

6/21/60

Dennis Potter
Ralph Robinson

ROLAND W. ANDERSON
COUNTY SURVEYOR
ANOKA COUNTY, MINNESOTA

E 1/4 Cor. Sec 31, T31, R23

Conc. Monument
Down 7'
~~Bent Iron Pipe on West Side~~

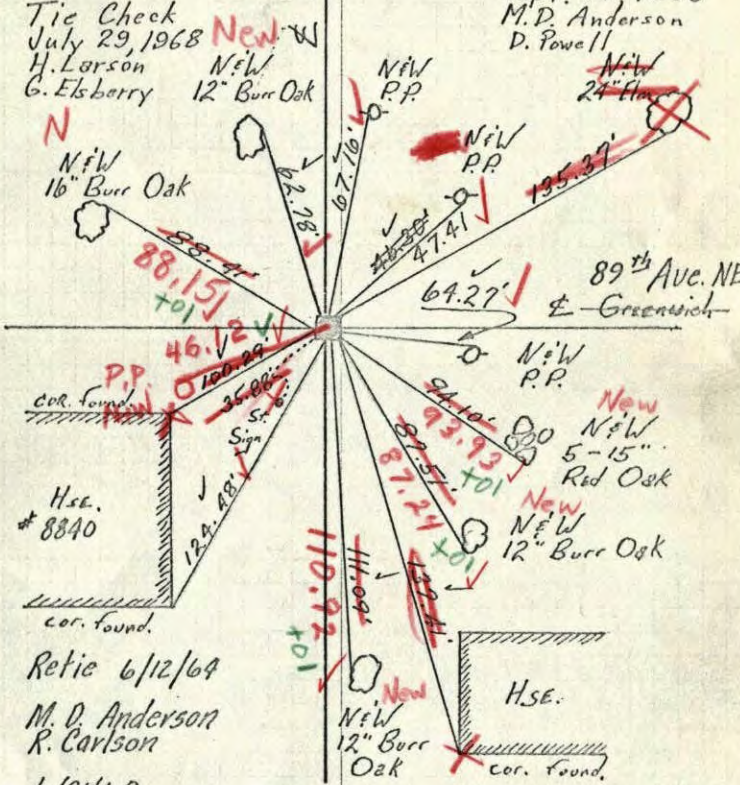
Cast Iron Monument
in place

August 28, 1967
D. Potter

Tie Check
July 29, 1968
H. Larson
G. Elsberry

TEMPERATURE CORRECTED
AND HORIZONTALLY
TAPED MEASUREMENTS

Sept. 19, 1966
M.D. Anderson
D. Powell



cor. found.

Hse.
#8840

Retie 6/12/64

M. D. Anderson
R. Carlson

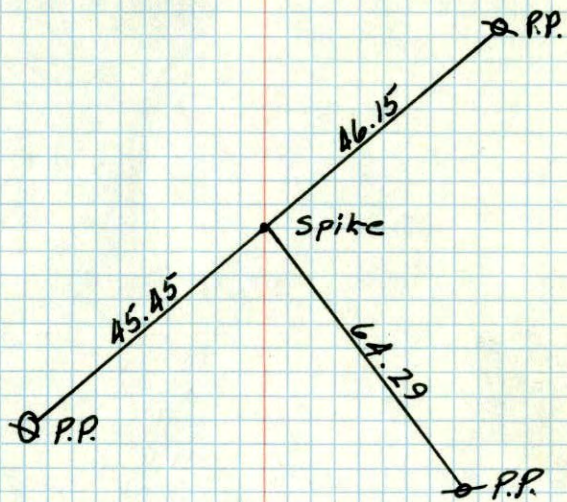
6/21/60

Dennis Potter
Ralph Robinson

ROLAND W. ANDERSON
COUNTY SURVEYOR
ANOKA COUNTY, MINNESOTA

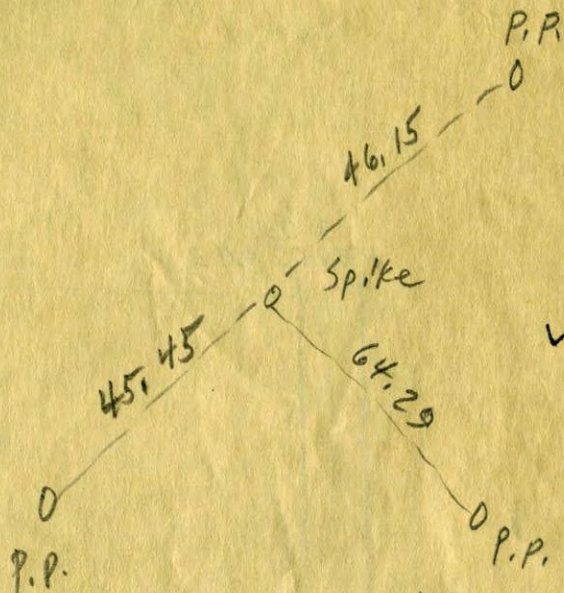
Retied +
Removed C.I. Mon. 8/8/69 #5-689
DP, RO, RB

31
W 1/4 Cor. Sec. 32, T31, R23
E Spike



July 1957
Milner W. Carley

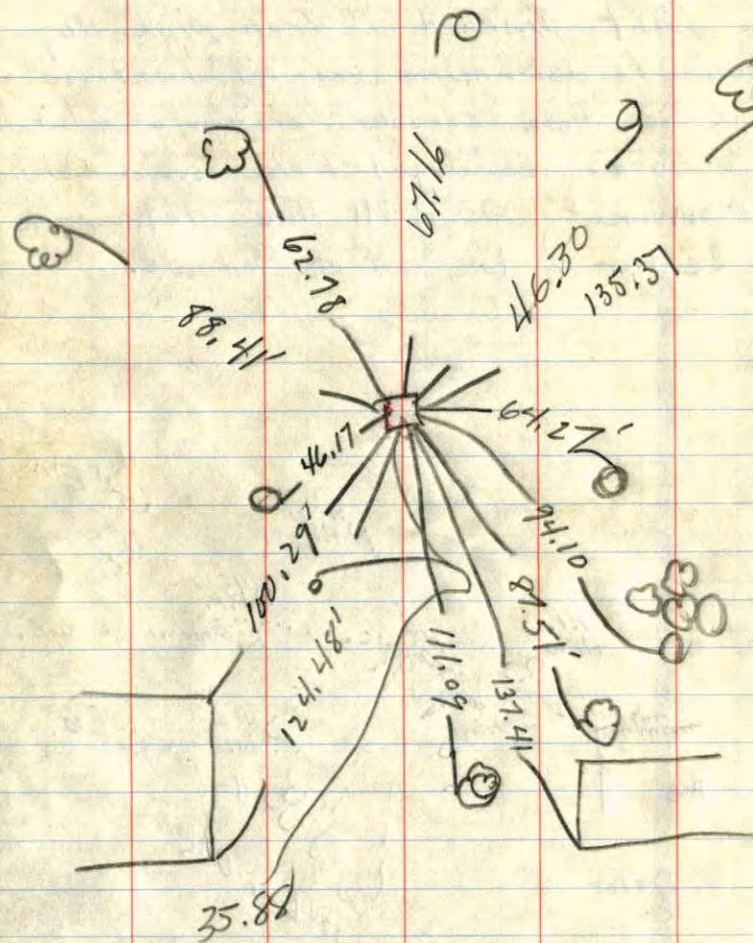
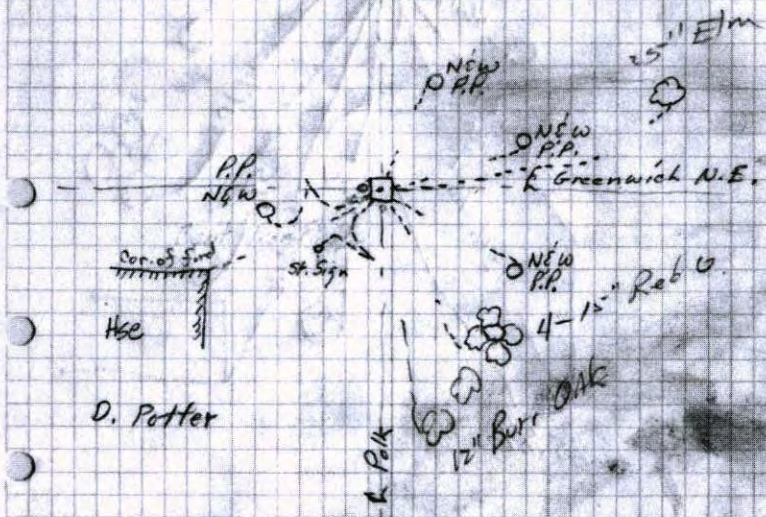
W 1/4 Cor. Sec. 32, T31, R23
E 31

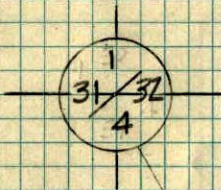


July 1957
Milner W. Carley

E/4 Cor. Sec. 31, T31, R23

- Found 2 spikes one with 1/2th
- on south side put in straddles. Sound bent pinched 1" iron pipe dug down to determine correct location
 - of iron pipe struck horizontal flat surface. Enlarged Hole found Conc. Monument. No drill Hole determine center & tie out as follows.





E 1/4 COR.
SEC. 31, T31, R28

E ROLL

E 1/4 COR. 31

86.15

GREENWICH N.E.

85.18

64.29

NAILE DISC.
IN FACE P.P.

NAILE DISC. IN
FACE P.P.

1" Iron Pipe bent
6" below surface