

CERTIFICATE OF LOCATION OF GOVERNMENT CORNER

County of Anoka

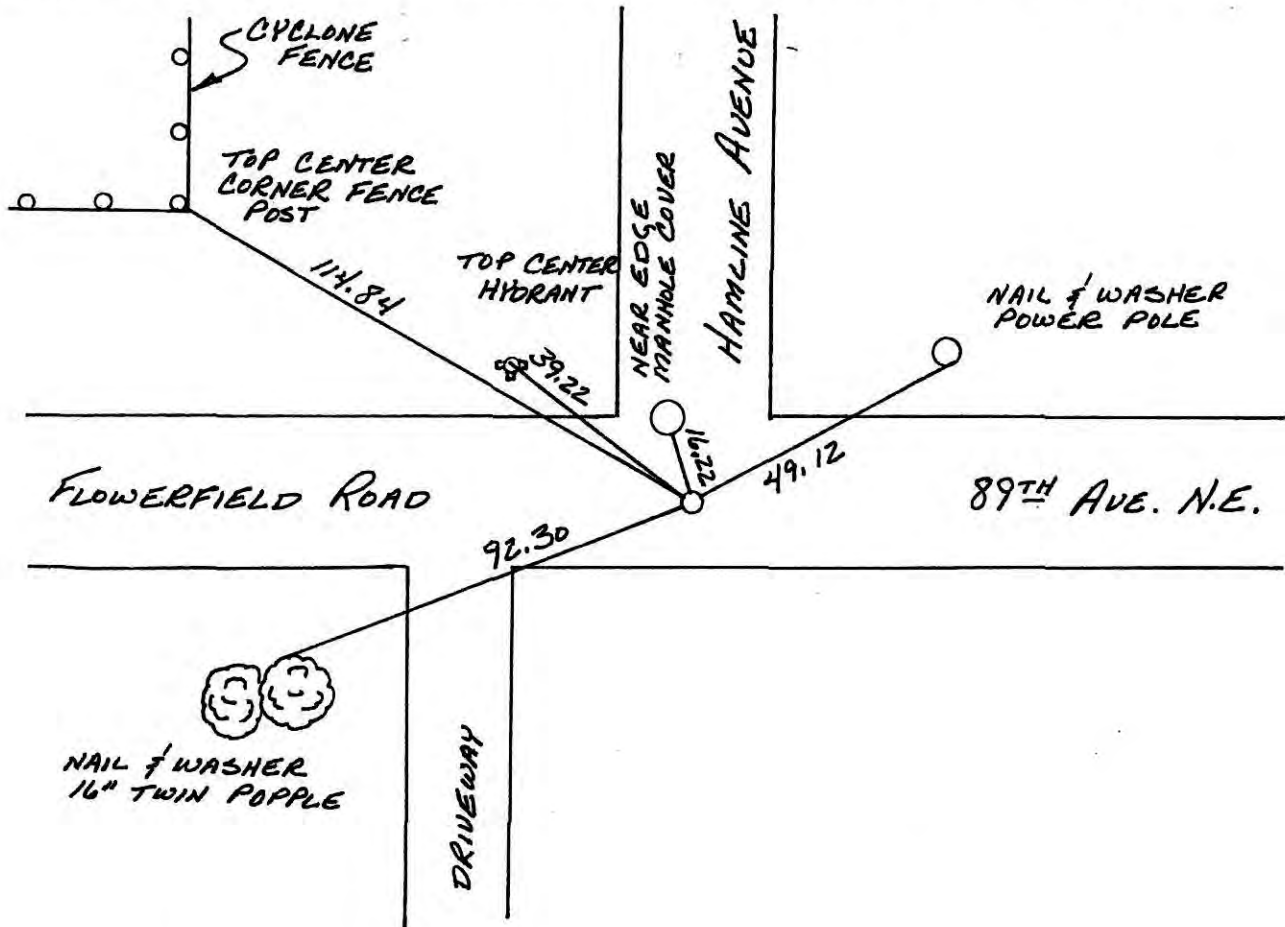
State of Minnesota

CENTER Corner of Sec. 35 Township 31 Range 23

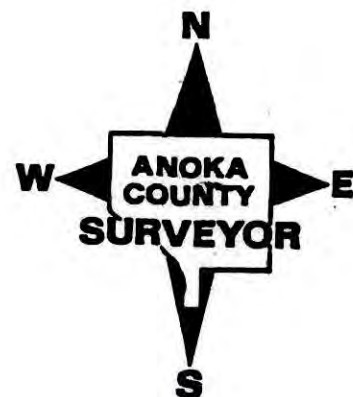
I hereby certify that on the day of MAY, 1956, I found the described corner which was evidenced by A 2" IRON PIPE

and I further certify that to perpetuate the location of said corner, I did, at the exact location thereof, place a permanent marker consisting of A 1/2" IRON PIPE

which reference or witness monuments are located in the manner following:

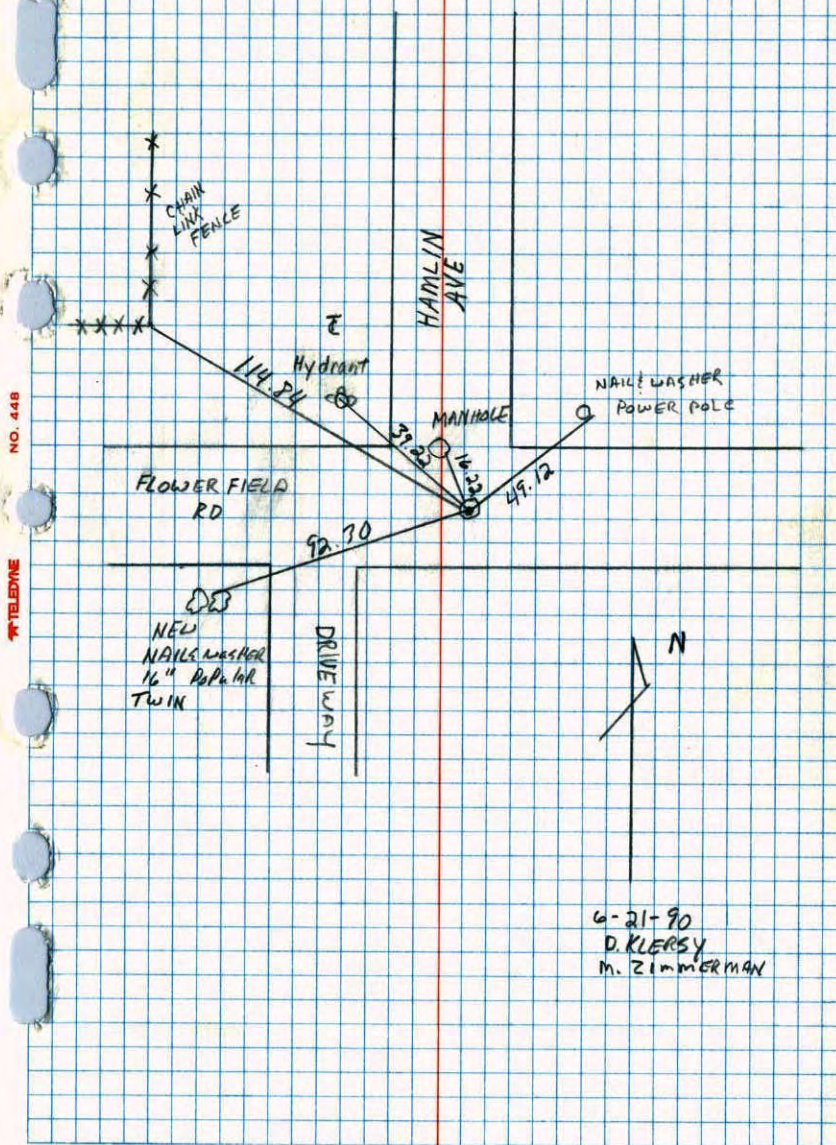


Revised date	Revised date	Revised date
5-21-75		
4-30-86		
6-3-86		
6-21-90		



CENTER corner of sec 35 T31 R23

Retired 1/2" iron pipe

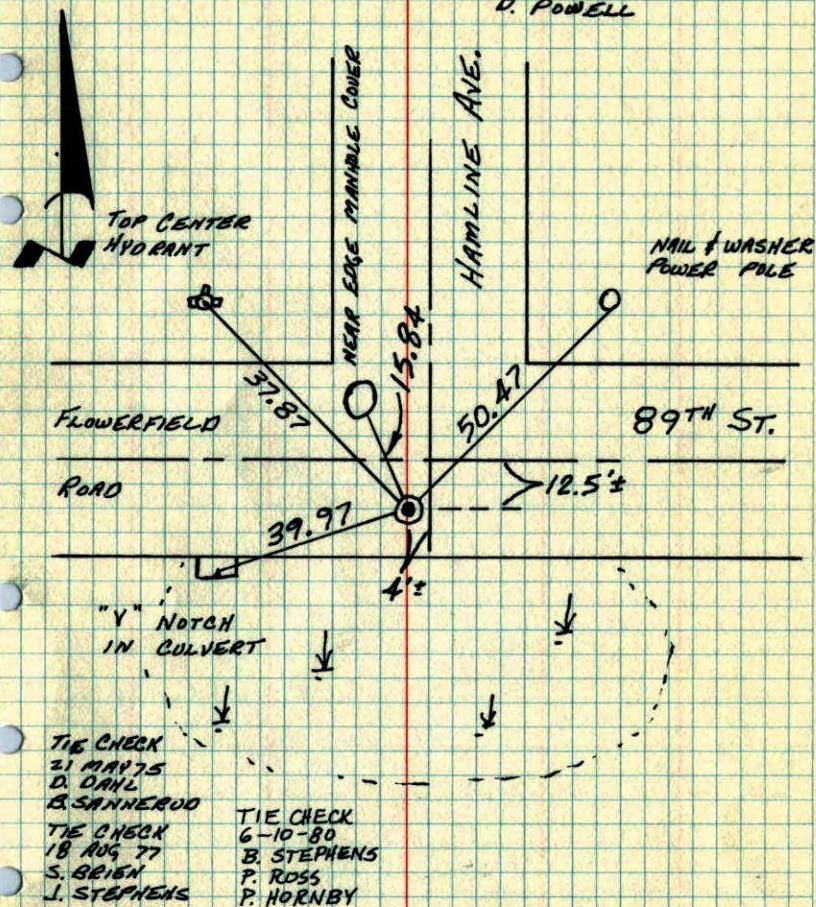


CENTER SEC 35 - T31 - R23

CAST IRON MONUMENT FLOSH. SET CAST IRON

FROM TRANSIT TIES OF 29 JUN 66. PK'S

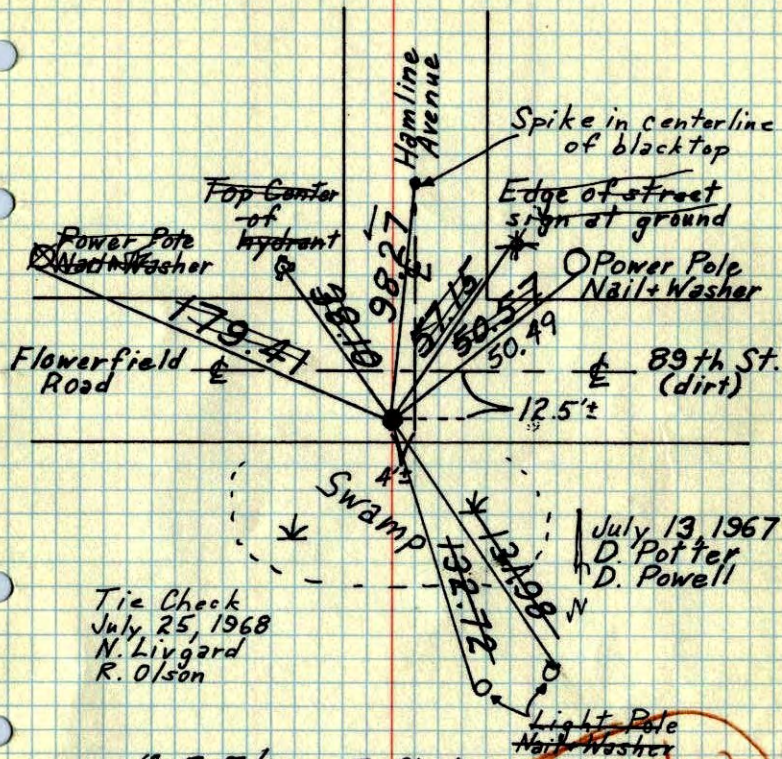
2.00' NORTH AND EAST.

13 JUL 67
D. POTTER
D. POWELL

TEMPERATURE CORRECTED ROLAND W. ANDERSON
AND HORIZONTALLY COUNTY SURVEYOR
TAPED MEASUREMENTS ANOKA COUNTY, MINNESOTA

Center Sec. 35-T31-R23

Cast Iron Monument down 0.5'±
Set Cast Iron from transit ties
of June 29, 1966



Tie Check
July 25, 1968
N. Livgard
R. Olson

10-5-71
H. Larson
F. Waks
M. Jensen

Tie Check
May 21, 1975
D. Dahl
B. Sannerud

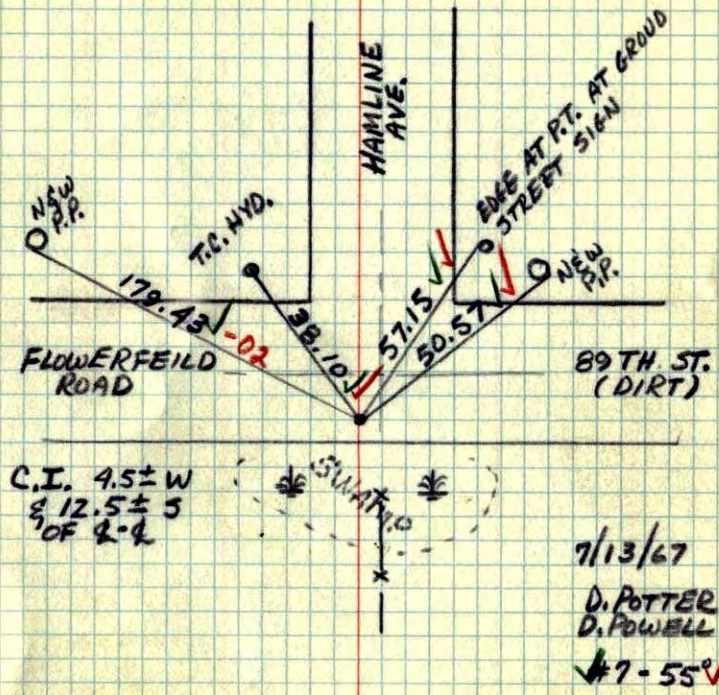
REDRAWN
SEE NEW
TIE BOOK

TEMPERATURE CORRECTED
AND HORIZONTALLY
TAPED MEASUREMENTS

ROLAND W. ANDERSON
COUNTY SURVEYOR
ANOKA COUNTY, MINNESOTA

CENTER SEC. 35, T31, R23

CAST IRON
MONUMENT
DOWN 0.5'±
SET C.I. FROM TRANSIT TIES
OF JUNE 29, 1966



7/13/67
D. POTTER
D. POWELL
7-55°

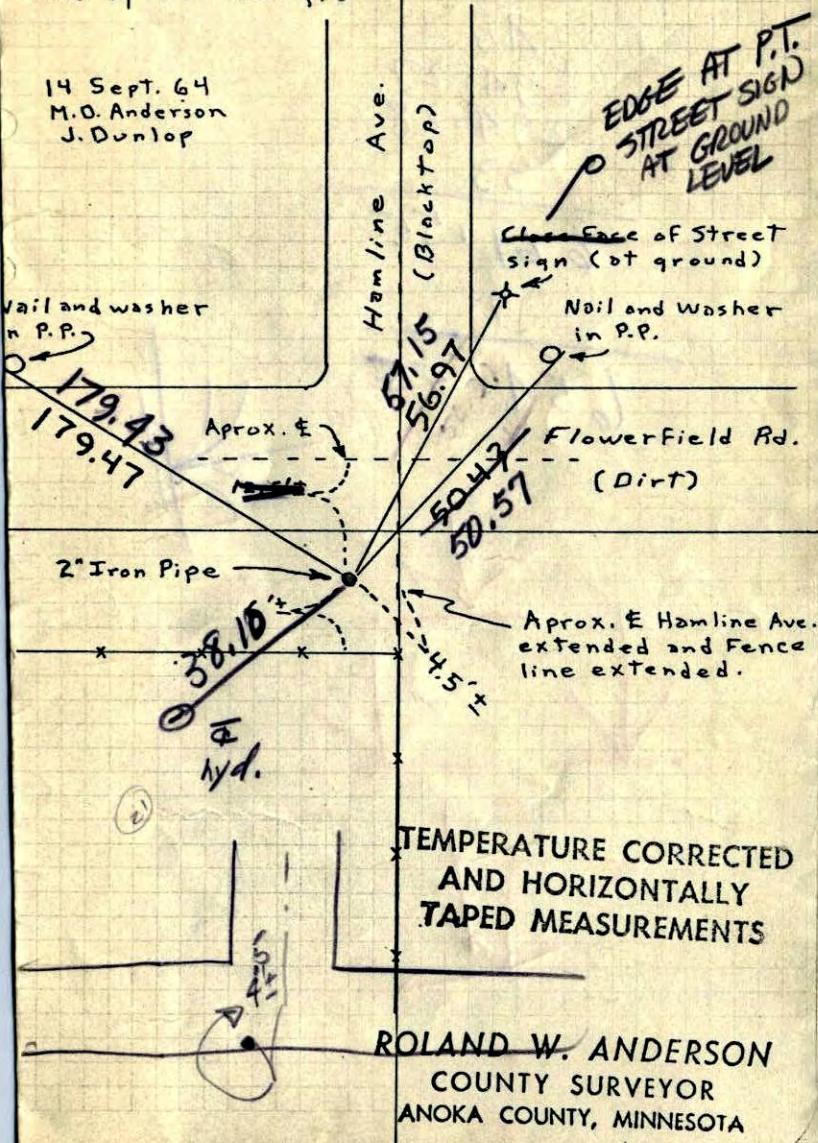
Center of Sec. 35, T31, R23

Found 2" Iron pipe down 0.2' From May 1956

Ties by C.O. Georgi.

14 Sept. 64
M.O. Anderson
J. Dunlop

Nail and washer
in P.P.

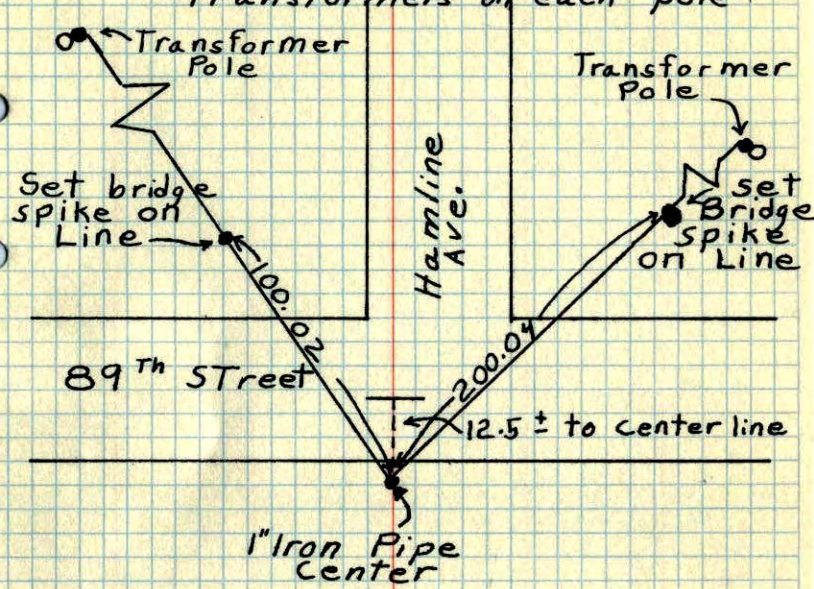


ROLAND W. ANDERSON
COUNTY SURVEYOR
ANOKA COUNTY, MINNESOTA

Completed
By 7/13/67

Center of Sec. 35 T31 R23

Took Transit ties for construction sighted on north side of transformers on each pole.

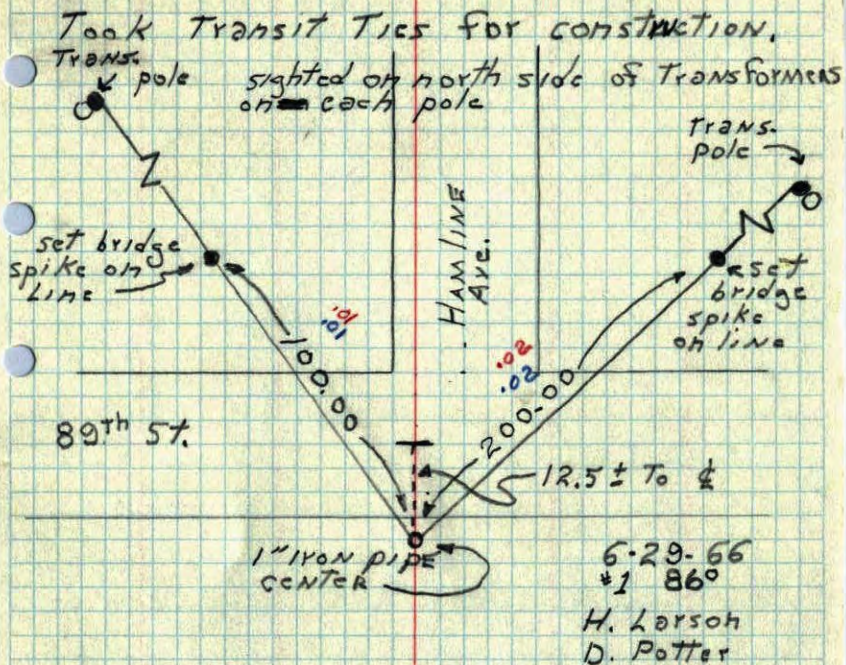


June 29, 1966
H. Larson
D. Potter
Temp 86°
Tape #1

TEMPERATURE CORRECTED
AND HORIZONTALLY
TAPED MEASUREMENTS

ROLAND W. ANDERSON
COUNTY SURVEYOR
ANOKA COUNTY, MINNESOTA

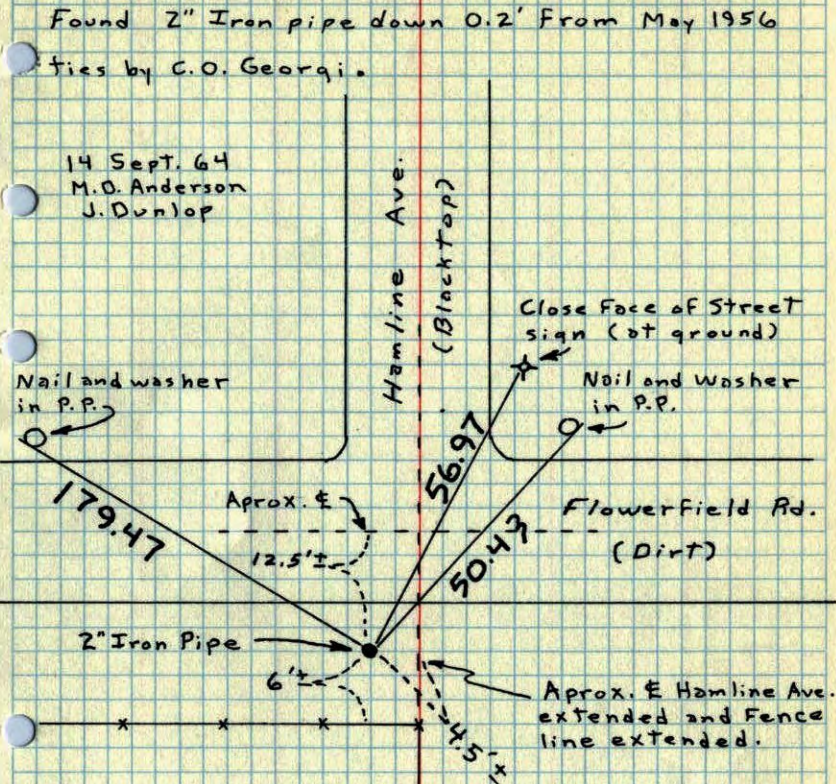
Center of Sec. 35 T31 R23



TEMPERATURE CORRECTED
AND HORIZONTALLY
TAPED MEASUREMENTS

ROLAND W. ANDERSON
COUNTY SURVEYOR
ANOKA COUNTY, MINNESOTA

Center of Sec. 35, T31, R23

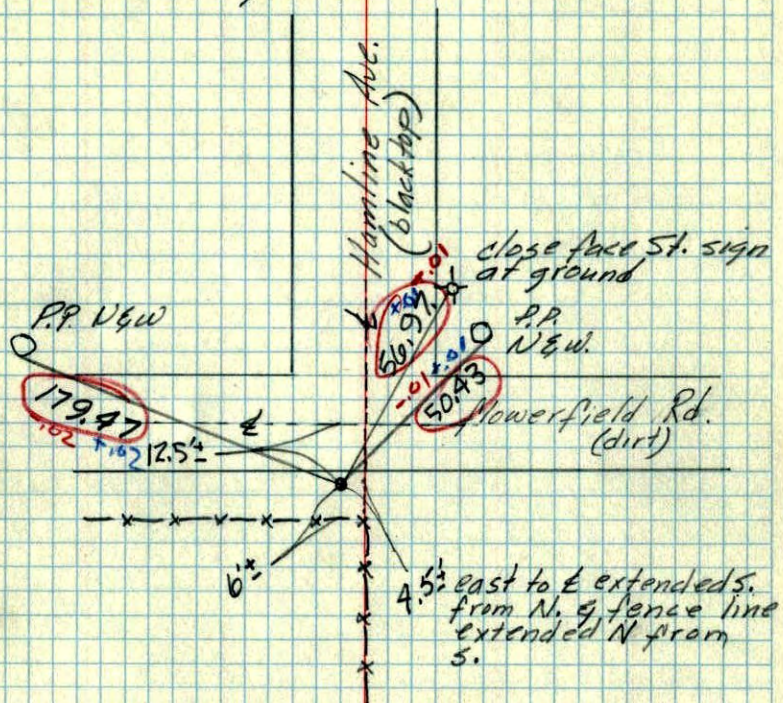


TEMPERATURE CORRECTED
AND HORIZONTALLY
TAPED MEASUREMENTS

ROLAND W. ANDERSON
COUNTY SURVEYOR
ANOKA COUNTY, MINNESOTA

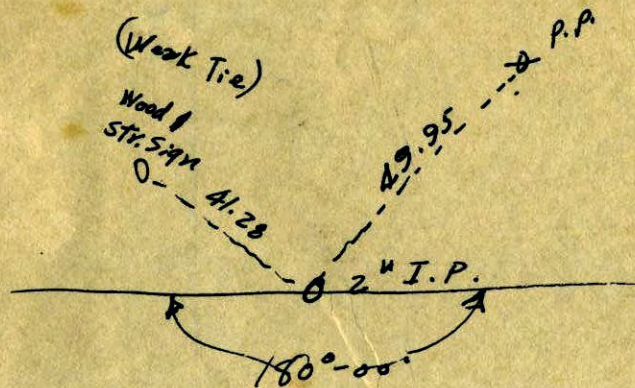
Center of Sec. 35-T31-R23

found 2" iron pipe down 0.2'
found from ties by L.O. Georgi of
May 1956



Sept. 19, 1964
M.D. Anderson
J. Dunlap
Temp. 50°
Tape 1

Center Sec. 35, T31, R23



W