

CERTIFICATE OF LOCATION OF GOVERNMENT CORNER
 County of Anoka State of Minnesota

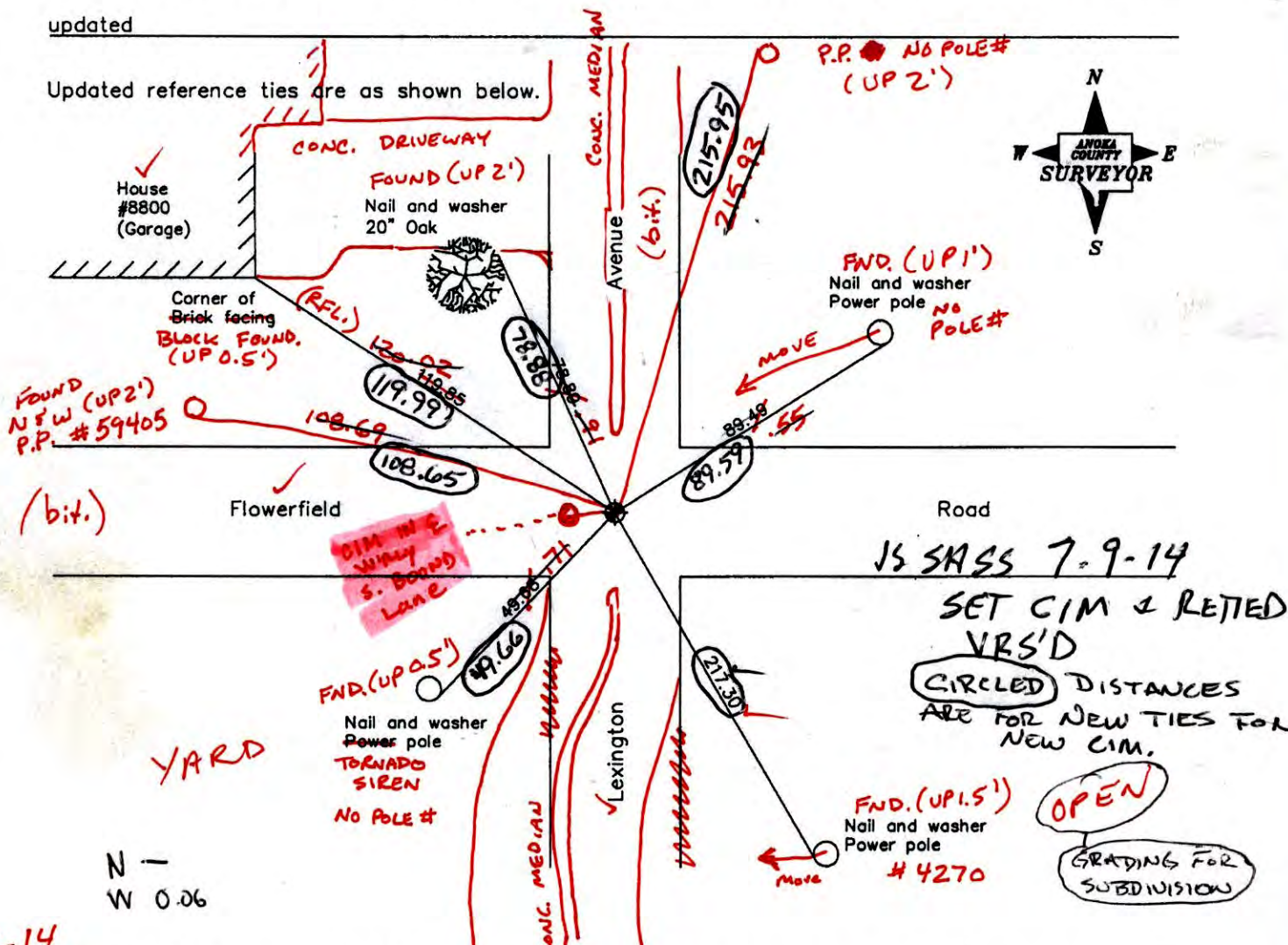
East 1/4 Corner of Sec. 35 Township 31 Range 23

On the 23rd day of October, 1961, the described corner was evidenced by a concrete monument

and to perpetuate the location of said corner, at the exact location thereof, a permanent marker was placed consisting of a cast iron monument **BROKEN / TIED OUT CNTR FIN**

AND on the 12th day of June, 2006, said permanent marker was found and the ties were updated

Updated reference ties are as shown below.



Revised date

10/19/98
6/05/02
6/12/06

N.A.D. 1983 Coordinates (1996 Adjustment)

County Project Coordinates	
Northing	135116.1362
Easting	526570.1101
Date	10/19/98

I hereby certify that this United States public land survey monument record is correct and complete to the best of my knowledge and belief.

Larry D. Hoium Date 6/12/06
 Larry D. Hoium, Anoka County Surveyor
 Minnesota License Number 18165

3D Q: 0.04
 N: 135116.1763
 E: 526570.0906

CERTIFICATE OF LOCATION OF GOVERNMENT CORNER

County of Anoka

State of Minnesota

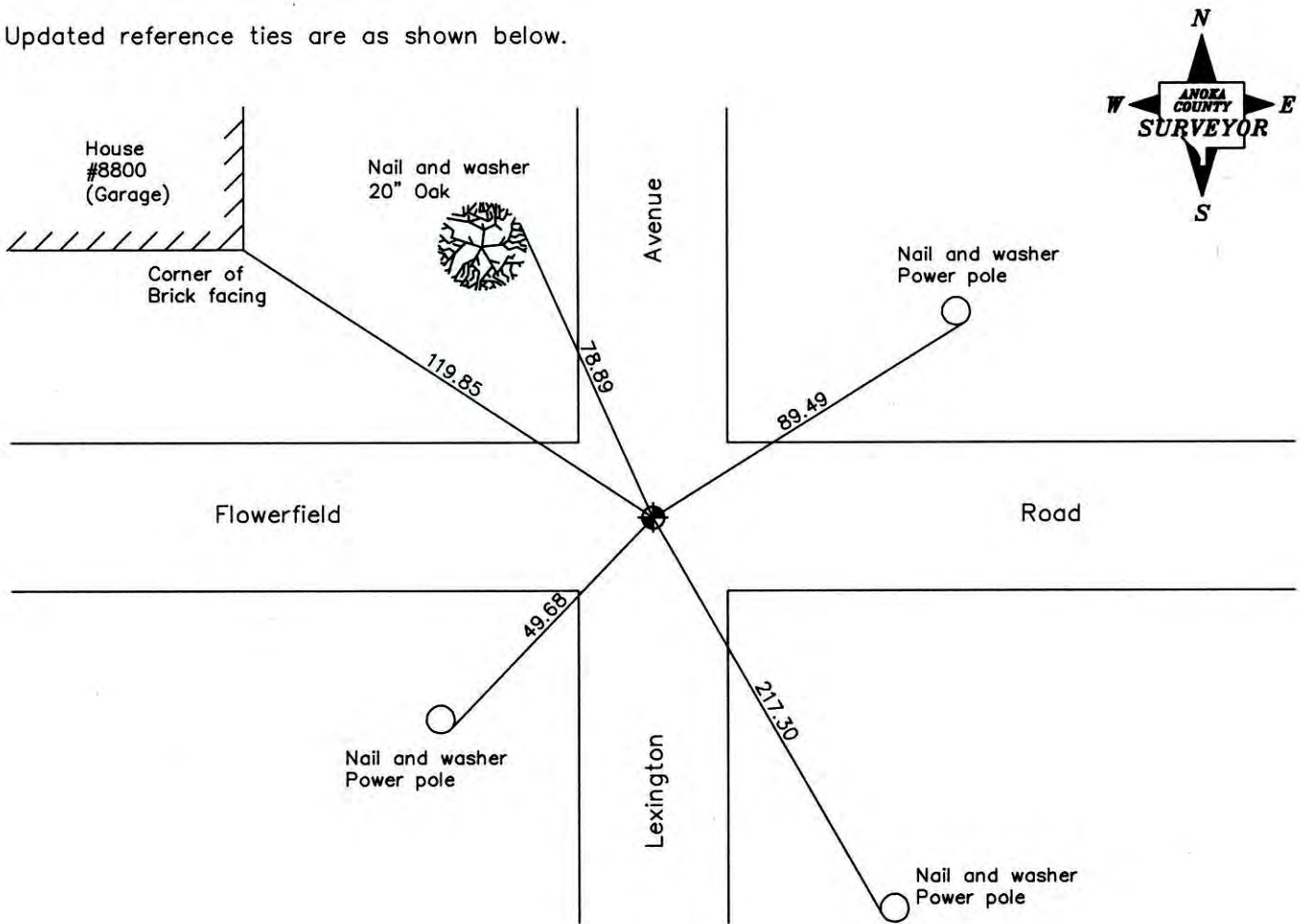
East 1/4 Corner of Sec. 35 Township 31 Range 23

On the 23rd day of October, 1961, the described corner was evidenced by a concrete monument

and to perpetuate the location of said corner, at the exact location thereof, a permanent marker was placed consisting of a cast iron monument

AND on the 12th day of June, 2006, said permanent marker was found and the ties were updated

Updated reference ties are as shown below.



Revised date
10/19/98
6/05/02
6/12/06

N.A.D. 1983 Coordinates (1996 Adjustment)	
County Project Coordinates	
Northing	<u>135116.1362</u>
Easting	<u>526570.1101</u>
Date	<u>10/19/98</u>

I hereby certify that this United States public land survey monument record is correct and complete to the best of my knowledge and belief.

Larry D. Hoium Date 6/12/06

Larry D. Hoium, Anoka County Surveyor

Minnesota License Number 18165

CERTIFICATE OF LOCATION OF GOVERNMENT CORNER

County of Anoka

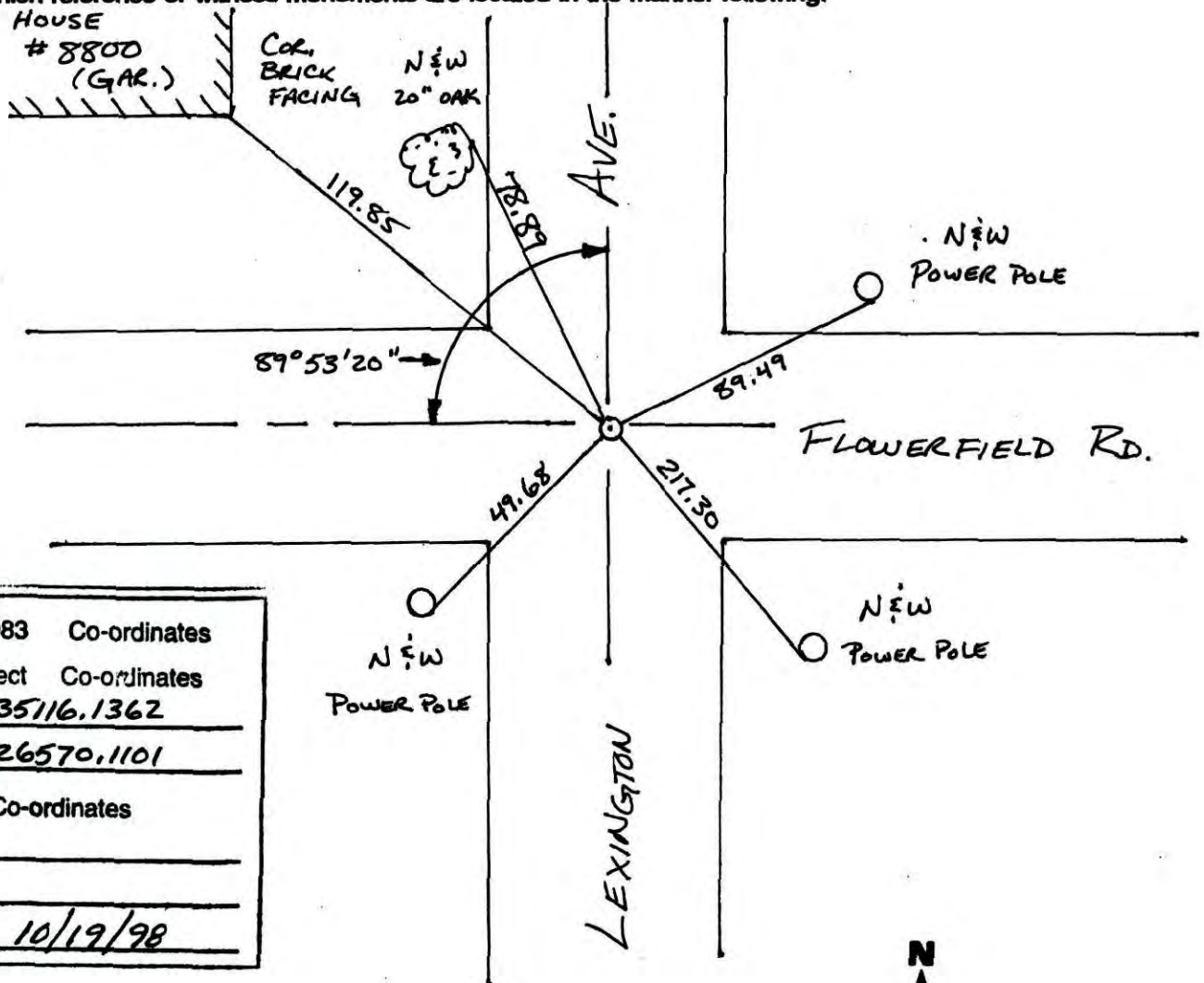
State of Minnesota

EAST 1/4 Corner of Sec. 35 Township 31 Range 23

I hereby certify that on the 23 day of OCT., 19 61, I found the described corner which was evidenced by CONCRETE MONUMENT

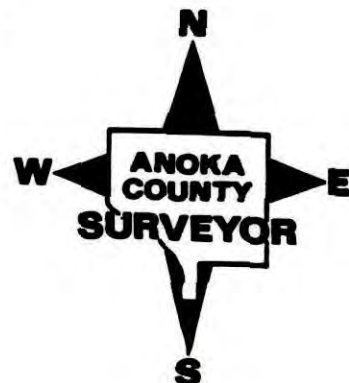
and I further certify that to perpetuate the location of said corner, I did, at the exact location thereof, place a permanent marker consisting of CAST IRON MONUMENT

which reference or witness monuments are located in the manner following:



N.A.D.	1983	Co-ordinates
County	Project	Co-ordinates
Northing	<u>135116.1362</u>	
Easting	<u>526570.1101</u>	
State Plane Co-ordinates		
Y	_____	
X	_____	
Date	<u>10/19/98</u>	

Revised date	Revised date	Revised date
6-2-86		
7-19-90		
6-26-95		
10-19-98		
6-5-02		
6-12-06		



CERTIFICATE OF LOCATION OF GOVERNMENT CORNER

County of Anoka

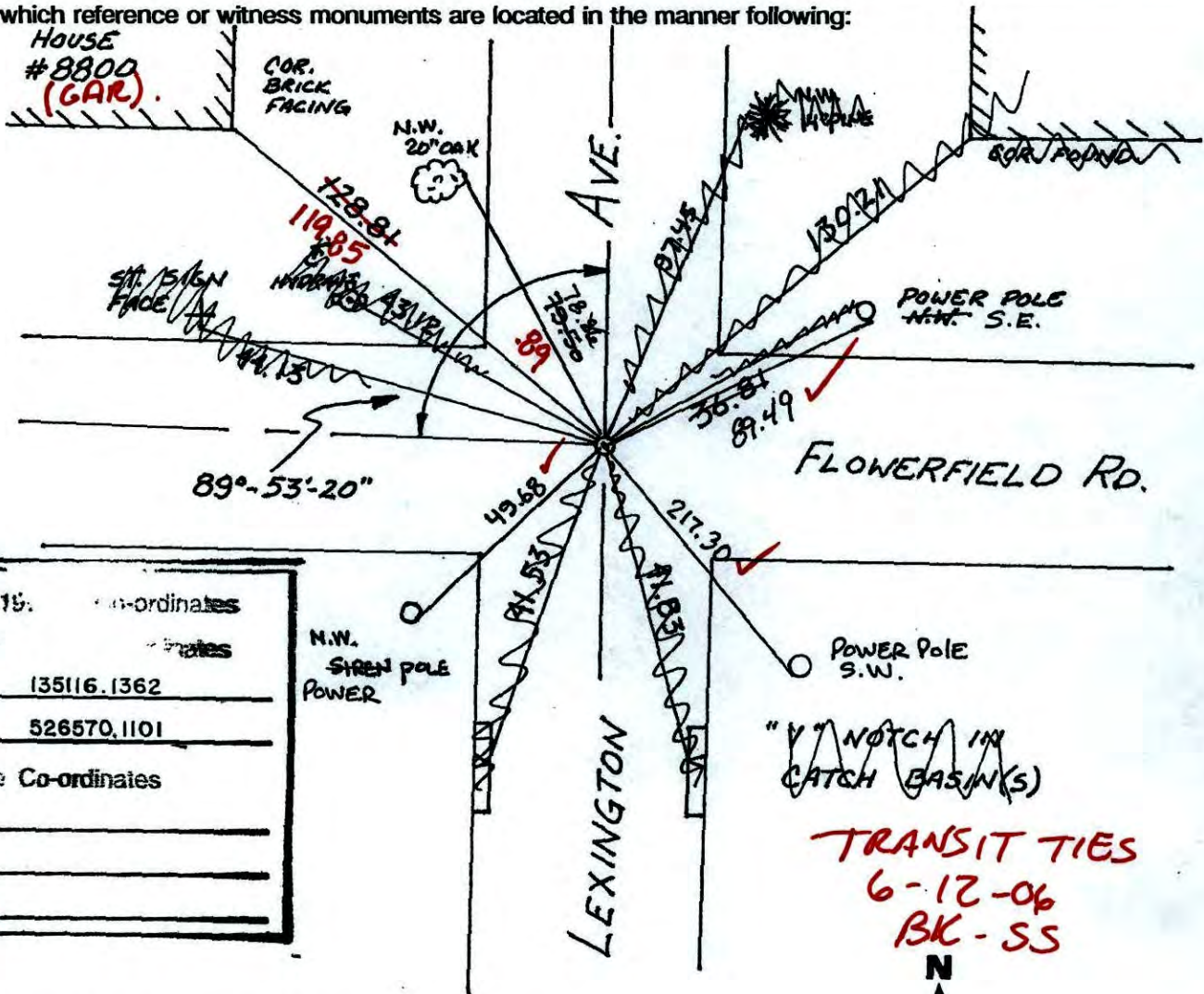
State of Minnesota

EAST QTR. Corner of Sec. 35 Township 31 Range 23

I hereby certify that on the 23 day of OCT., 1961, I found the described corner which was evidenced by CONCRETE MON.

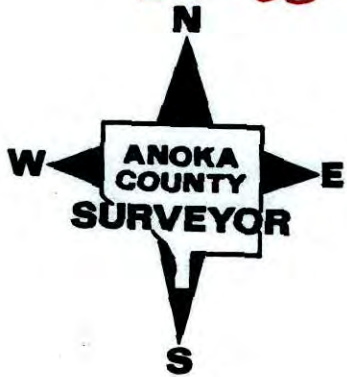
and I further certify that to perpetuate the location of said corner, I did, at the exact location thereof, place a permanent marker consisting of CAST IRON MON.

which reference or witness monuments are located in the manner following:



N.A.D.	19	Coordinates
County	P	Coordinates
Northing	135116.1362	
Easting	526570.1101	
State Plane Co-ordinates		
Y	_____	
X	_____	
Date	_____	

Revised date	Revised date	Revised date
6-2-86		
7-19-90		
6-26-95		
10-19-98		
6-5-02		



CERTIFICATE OF LOCATION OF GOVERNMENT CORNER

County of Anoka

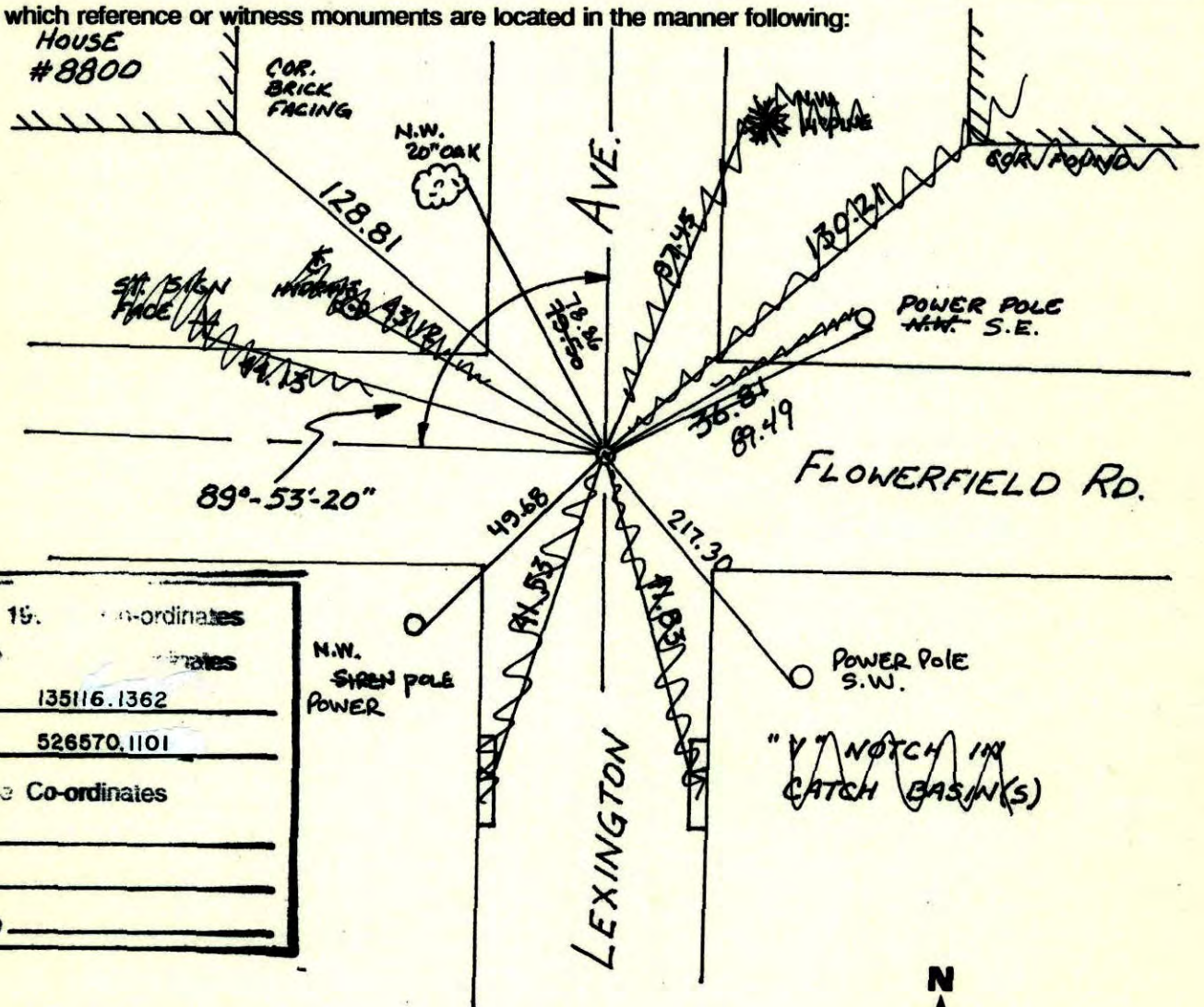
State of Minnesota

EAST QTR. Corner of Sec. 35 Township 31 Range 23

I hereby certify that on the 23 day of OCT., 1961, I found the described corner which was evidenced by CONCRETE MON.

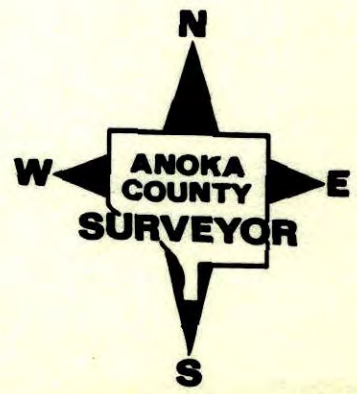
and I further certify that to perpetuate the location of said corner, I did, at the exact location thereof, place a permanent marker consisting of CAST IRON MON.

which reference or witness monuments are located in the manner following:



N.A.D.	19	Co-ordinates
County	P	Coordinates
Northing	<u>135116.1362</u>	
Easting	<u>526570.1101</u>	
State Plane Co-ordinates		
Y	_____	
X	_____	
Date	_____	

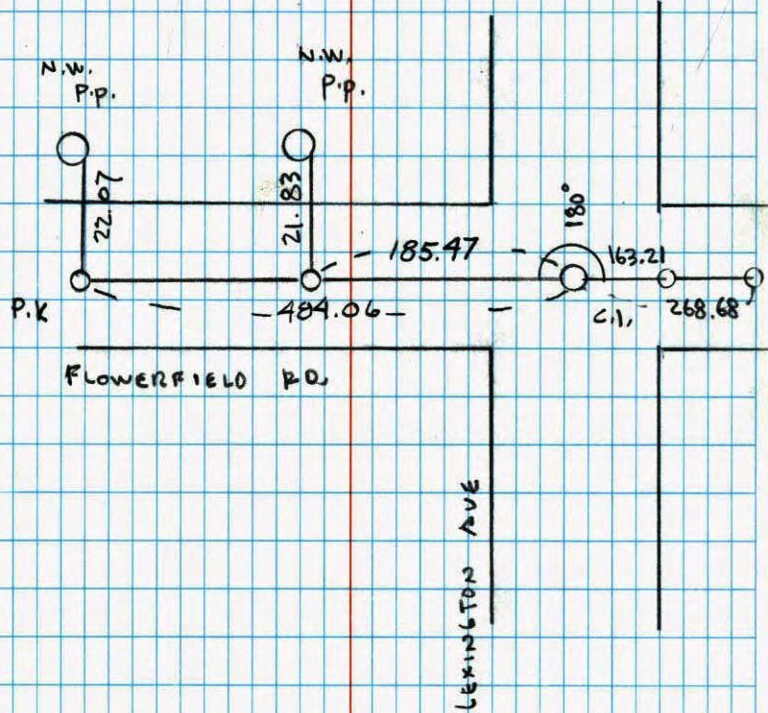
Revised date	Revised date	Revised date
<u>6-2-86</u>		
<u>7-19-90</u>		
<u>6-26-95</u>		
<u>10-19-98</u>		
<u>6-5-02</u>		



EAST 1/4 COR. SEC. 35 T31 R23

REMOVED CAST IRON MON &
RETIED FOR CONST.

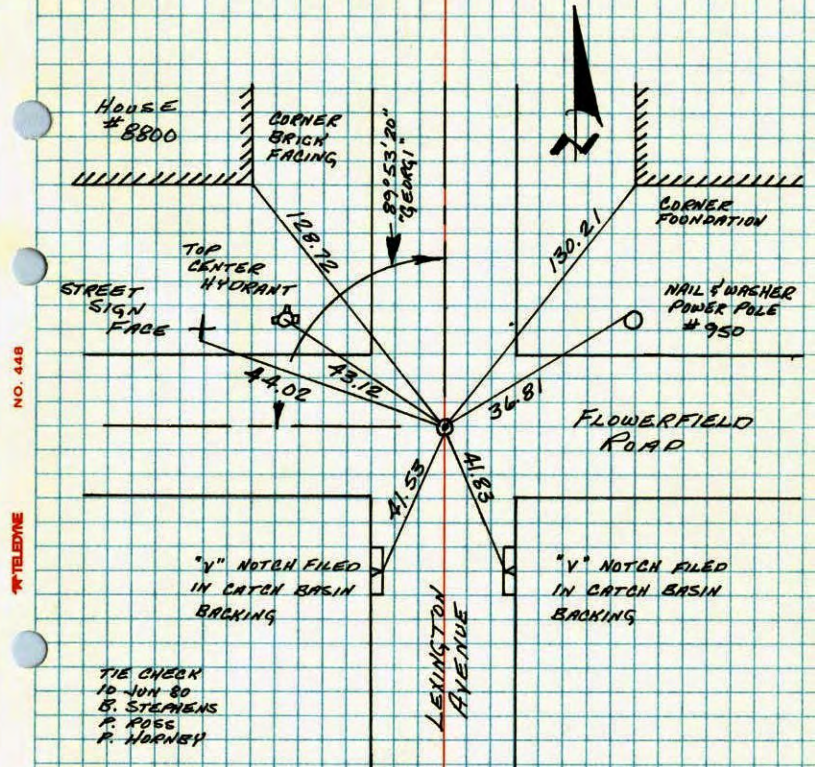
5.29.01
J. SIMMER
B. KLEMZ



NATIONAL PRINTFAST NO. 446

E 1/4 CORNER SECTION 35-T31-R23

CAST IRON MONUMENT FLUSH. CAST IRON SET ON TOP OF
CONCRETE MONUMENT FOUND 22 OCT 61 BY M.A. ANDERSON.



NO. 448 TELETYPE

TEMPERATURE CORRECTED
AND HORIZONTALLY
TAPED MEASUREMENTS

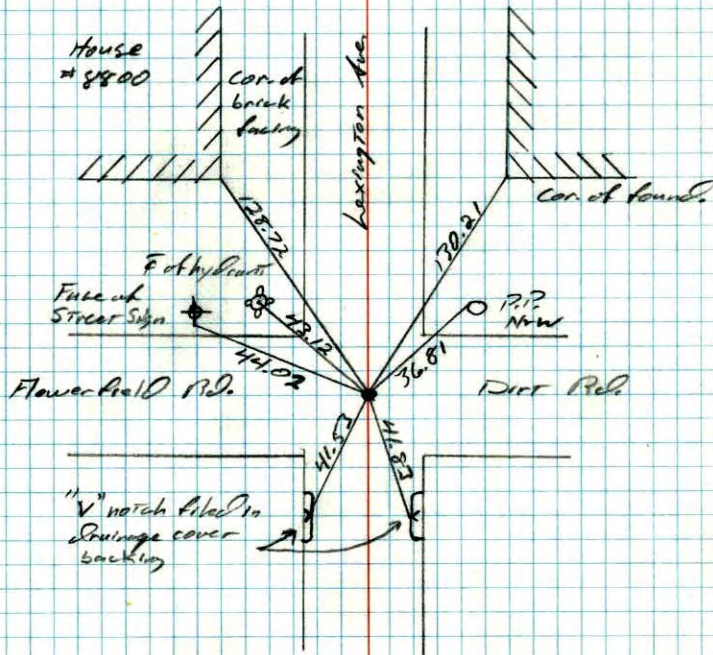
ROLAND W. ANDERSON
COUNTY SURVEYOR
ANOKA COUNTY, MINNESOTA

116

E 1/4 Cor. Sec 35 T-31 R-23

Cast iron monument flush.

6-10-80
B. Stephens
P. Bross
P. Hornby



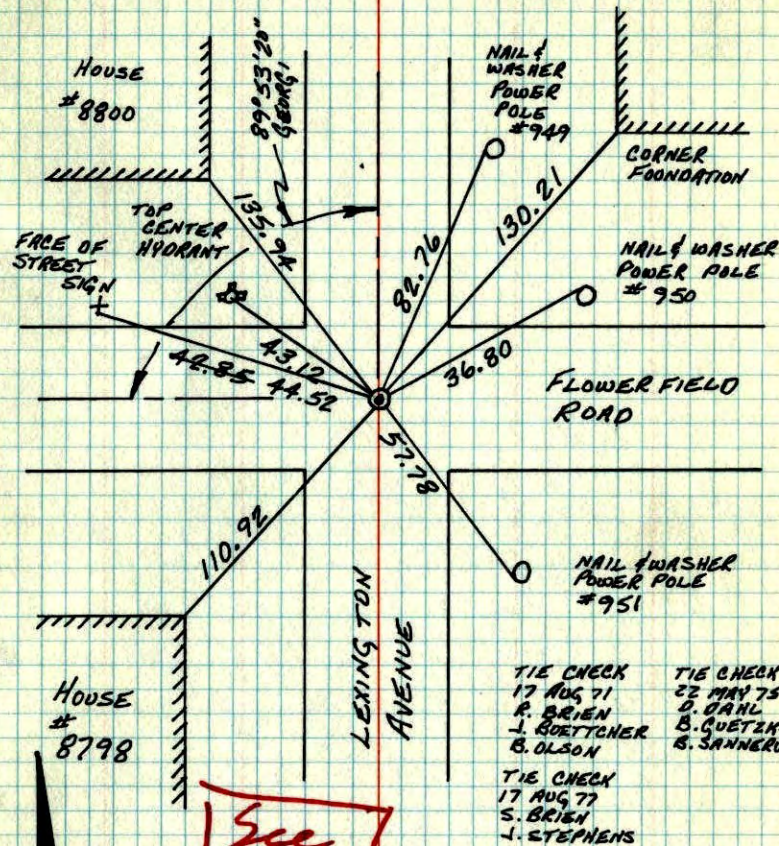
NO. 448

TELEPHONE

116

E 1/4 COR. SEC. 35-T31-R23

SET CAST IRON MONUMENT FLUSH ON TOP OF
CONCRETE MONUMENT FOUND 23 OCT 61 BY M.D. ANDERSON
17 AUG 71 R. BRIEN



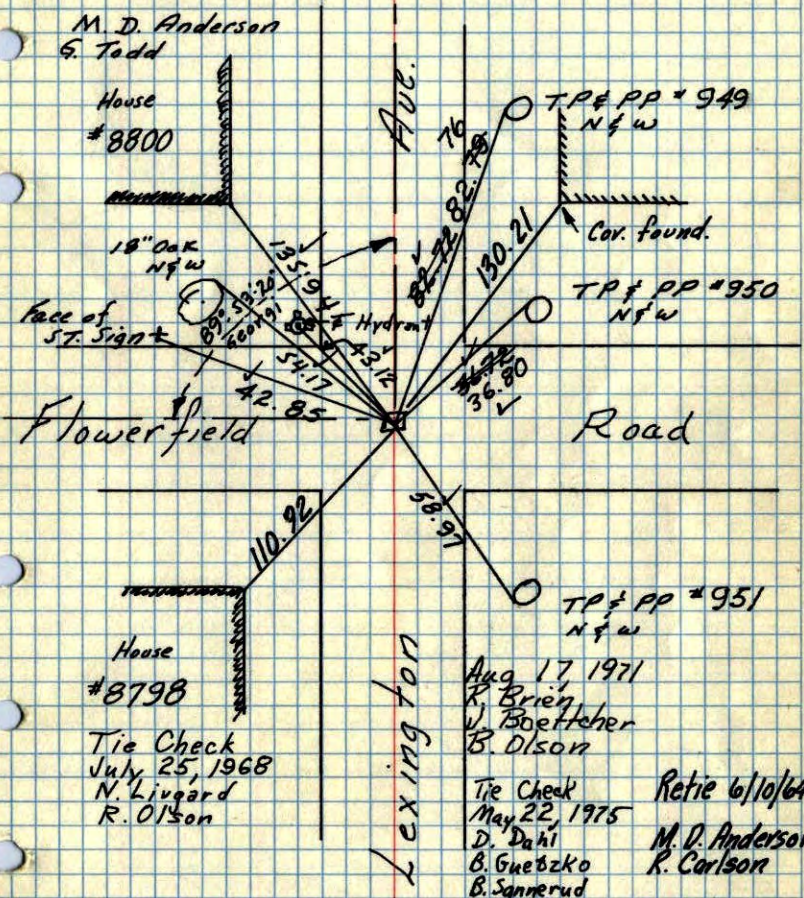
See
New
Ties

TIE CHECK 17 AUG 71 R. BRIEN J. BOETTNER B. OLSON	TIE CHECK 22 MAY 75 D. DANL B. GUETZKO S. SANNERUD
TIE CHECK 17 AUG 77 S. BRIEN J. STEPHENS	

TEMPERATURE CORRECTED ROLAND W. ANDERSON
AND HORIZONTALLY COUNTY SURVEYOR
TAPED MEASUREMENTS ANOKA COUNTY, MINNESOTA

E 1/4 Cor. Sec. 35-31-23

found Conc. Mon. down 1.0' Solid 1/2"
Iron bar over top in Black Top, Flush
Set Cast Iron Mon. Flush on
23 Oct 1961 top of Concrete Mon.



TEMPERATURE CORRECTED
AND HORIZONTALLY
TAPED MEASUREMENTS

ROLAND W. ANDERSON
COUNTY SURVEYOR
ANOKA COUNTY, MINNESOTA

Aug 17 1971
R. Brien
V. Boettcher
B. Olson
Tie Check
May 22, 1975
D. Dahl
B. Guebzko
B. Sannerud
Retire 6/10/64
M. D. Anderson
R. Carlson

M. D. Anderson
G. Todd

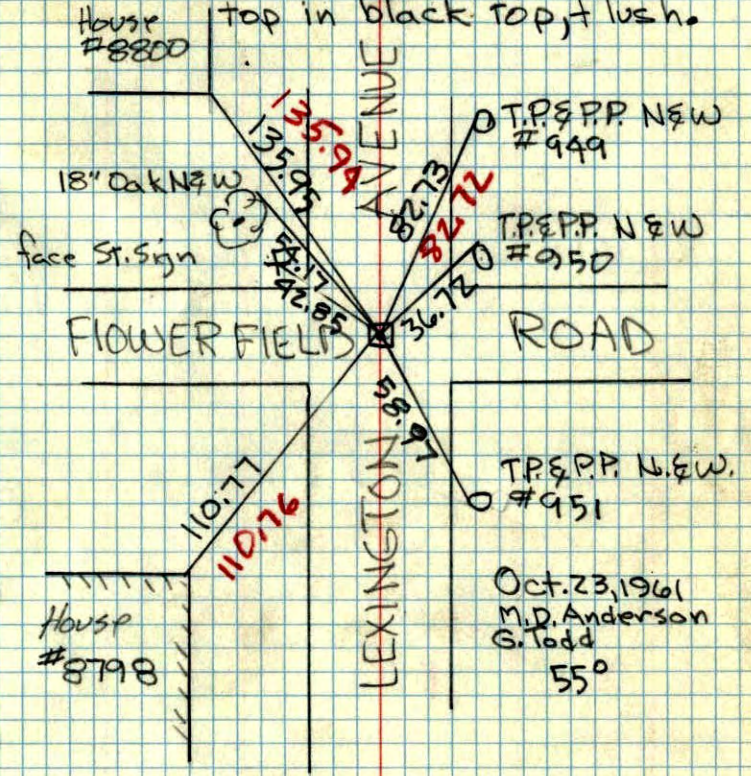
House
#8800

House
#8798

Tie Check
July 25, 1968
N. Livgard
R. Olson

E 1/4 Cor. Sec. 35-31-23

found Concret Mon.
Down 1.0'
Solid 1/2" iron bar over
top in black top, flush.



TEMP.
CORR.

Oct. 23, 1961
M. D. Anderson
G. Todd
55°

House
#8800

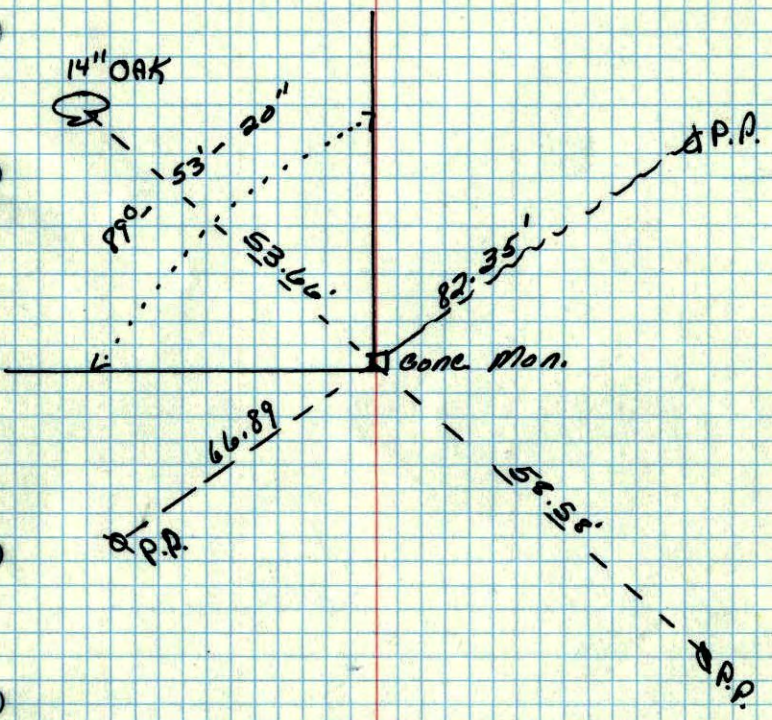
House
#8798

18" Oak N&W
face St. Sign

FLOWER FIELDS
ROAD

LEXINGTON
AVENUE

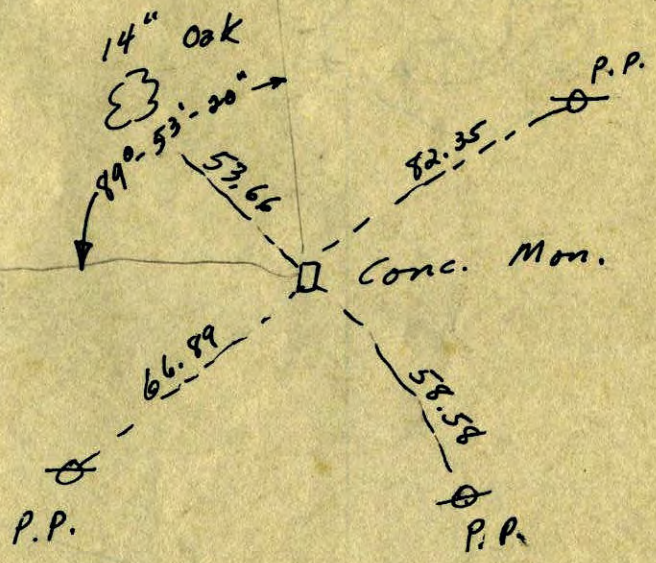
E 1/4 Cor. of Sec. 35 T. 31 R. 23 ✓



Retied

C.O. Georgi
MAY 1956

E 1/4 Corn. Sec. 35, T31, R23



34

C.O. Georgi
May 1956