

# CERTIFICATE OF LOCATION OF GOVERNMENT CORNER

County of Anoka

State of Minnesota

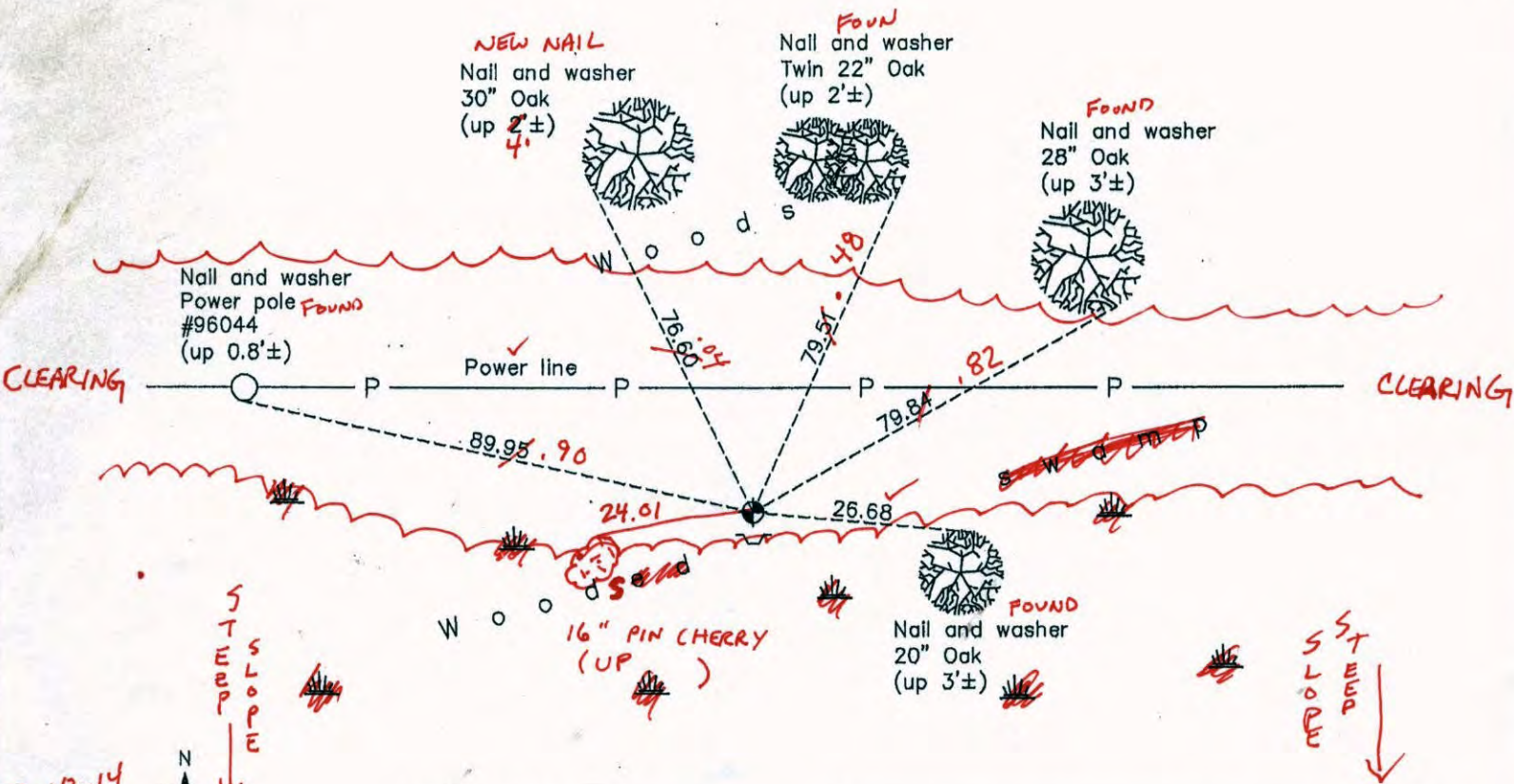
## East 1/4 Corner of Sec. 36 Township 31 Range 23

On the 5th day of August, 1990, the described corner was evidenced by a 1/2" iron pipe

and to perpetuate the location of said corner, at the exact location thereof, a permanent marker was placed consisting of a cast iron monument with a sign and post on the south side

AND on the 12th day of December, 2013, said permanent marker was found and the ties were updated

Updated reference ties are as shown below.



7-18-14  
BK-SS  
TAPED

ANOKA COUNTY SURVEYOR

Revision Date  
3/25/14

N.A.D. 1983 Coordinates  
(1996 Adjustment)

County Project Coordinates	
Northing	135042.8985
Easting	531864.3778
Date	2/09/00

I hereby certify that this United States public land survey monument record is correct and complete to the best of my knowledge and belief.

*Larry D. Holum* Date 3/25/14

Larry D. Holum, Anoka County Surveyor  
Minnesota License Number 18165

# CERTIFICATE OF LOCATION OF GOVERNMENT CORNER

County of Anoka

State of Minnesota

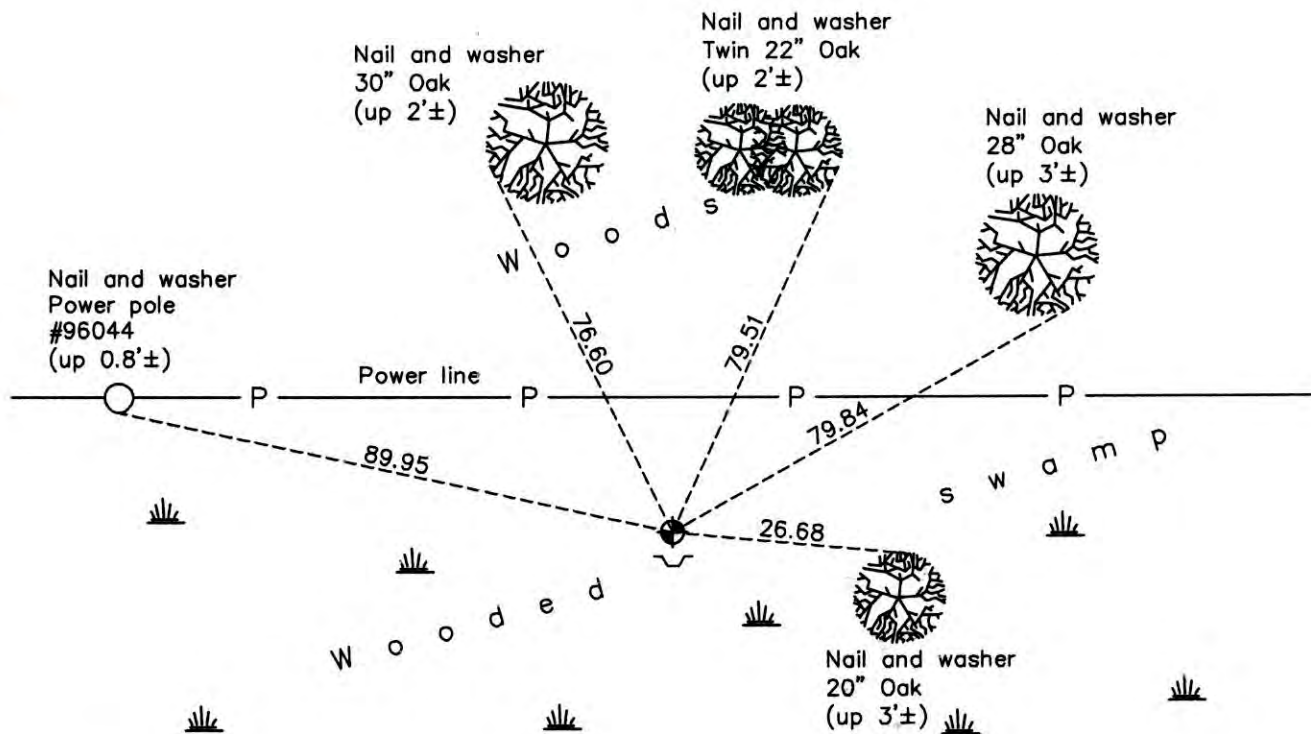
## East 1/4 Corner of Sec. 36 Township 31 Range 23

On the 5th day of August, 1990, the described corner was evidenced by a 1/2" iron pipe

and to perpetuate the location of said corner, at the exact location thereof, a permanent marker was placed consisting of a cast iron monument with a sign and post on the south side

AND on the 12th day of December, 2013, said permanent marker was found and the ties were updated

Updated reference ties are as shown below.



N  
W ANOKA COUNTY SURVEYOR E  
S

Revision Date  
3/25/14

N.A.D. 1983 Coordinates  
(1996 Adjustment)

County Project Coordinates	
Northing.	<u>135042.8985</u>
Easting	<u>531864.3778</u>
Date	<u>2/09/00</u>

I hereby certify that this United States public land survey monument record is correct and complete to the best of my knowledge and belief.

*Larry D. Hoium* Date 3/25/14

Larry D. Hoium, Anoka County Surveyor  
Minnesota License Number 18165

# CERTIFICATE OF LOCATION OF GOVERNMENT CORNER

County of Anoka

State of Minnesota

## East 1/4 Corner of Sec. 36 Township 31 Range 23

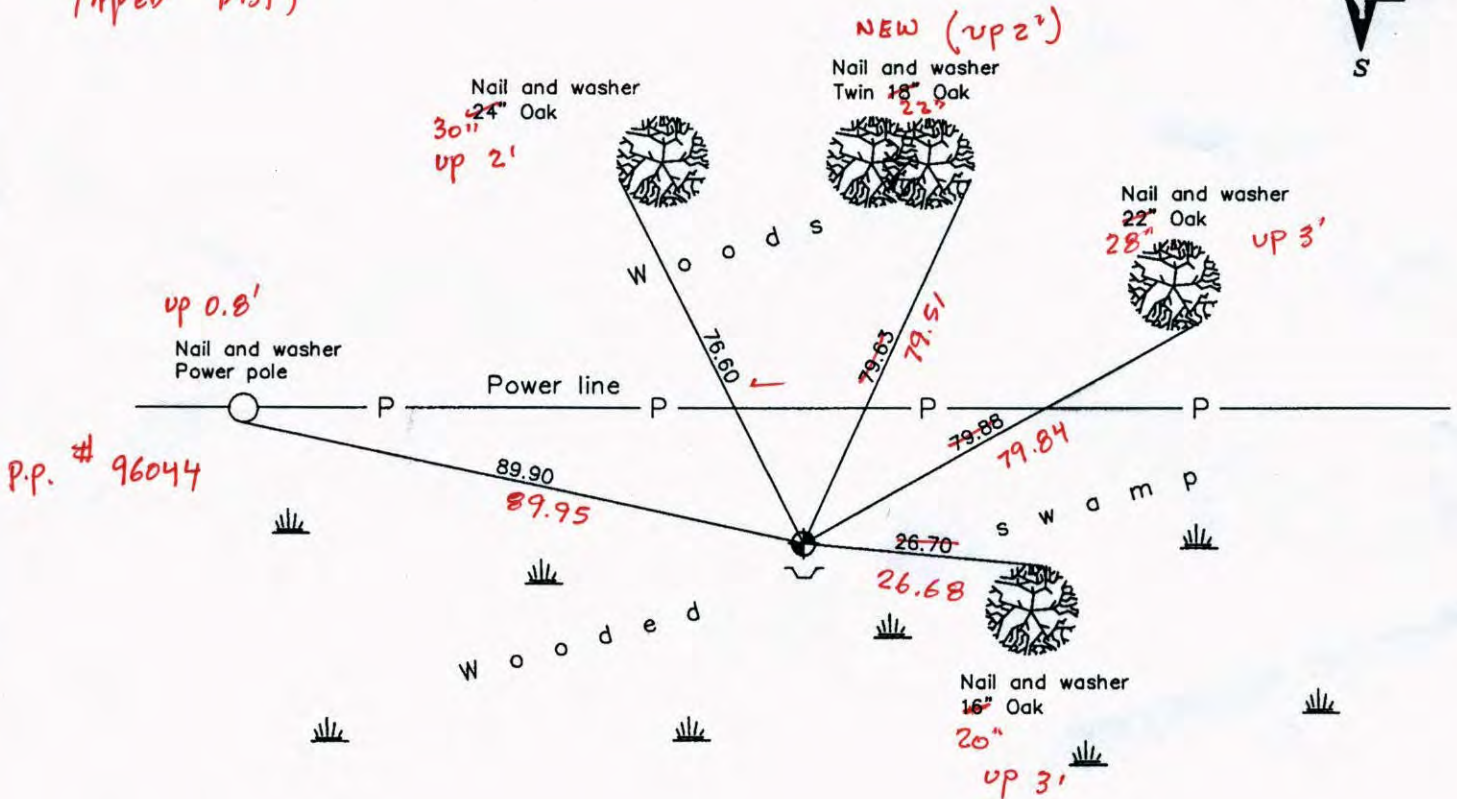
On the 5th day of August, 1990, the described corner was evidenced by a 1/2" iron pipe

and to perpetuate the location of said corner, at the exact location thereof, a permanent marker was placed consisting of a cast iron monument with a sign and post on the south side

AND on the 9th day of February, 2000, said permanent marker was found and the ties were updated

Updated reference ties are as shown below.

12-12-13 JS GH.  
TAPED DIST'S



Revised date

7/31/90
8/07/95
2/09/00

N.A.D. 1983 Coordinates (1996 Adjustment)

County Project Coordinates	
Northing	135042.8985
Easting	531864.3778
Date	2/09/00

I hereby certify that this United States public land survey monument record is correct and complete to the best of my knowledge and belief.

*Larry D. Hoium* Date 2/09/00  
 Larry D. Hoium, Anoka County Surveyor  
 Minnesota License Number 18165

VR'S  
COOP'S  
30' = 0.07 N: 135042.8599 E 531864.3522

# CERTIFICATE OF LOCATION OF GOVERNMENT CORNER

County of Anoka

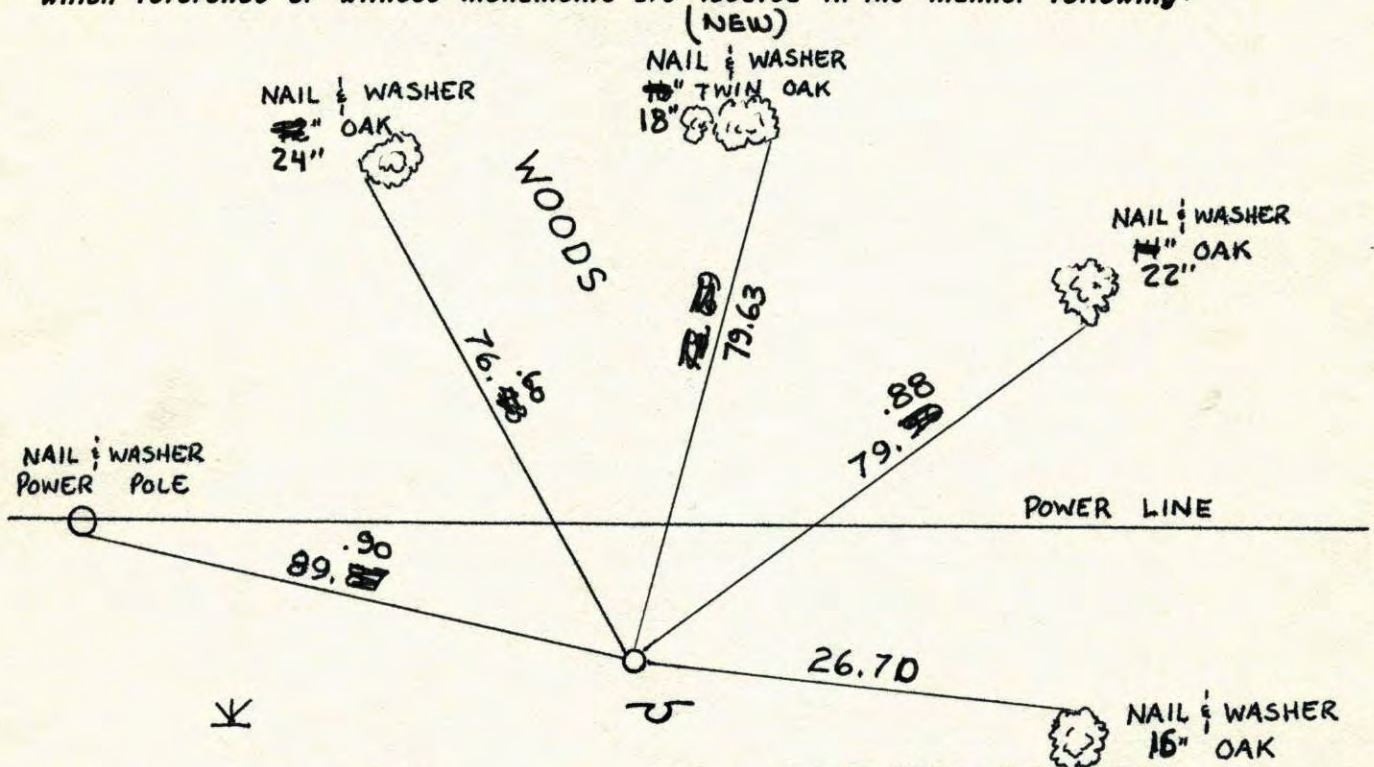
State of Minnesota

EAST 1/4 Corner of Sec. 36 Township 31 Range 23

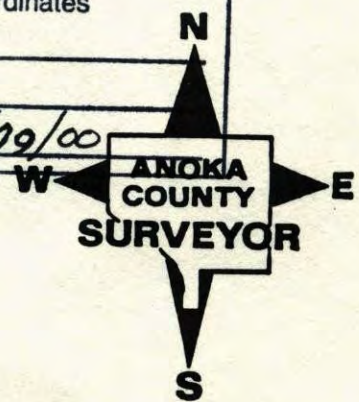
I hereby certify that on the 5 day of AUGUST, 1990, I found the described corner which was evidenced by 1/2" IRON PIPE

and I further certify that to perpetuate the location of said corner, I did, at the exact location thereof, place a permanent marker consisting of CAST IRON SIGN AND POST ON SOUTH SIDE

which reference or witness monuments are located in the manner following:



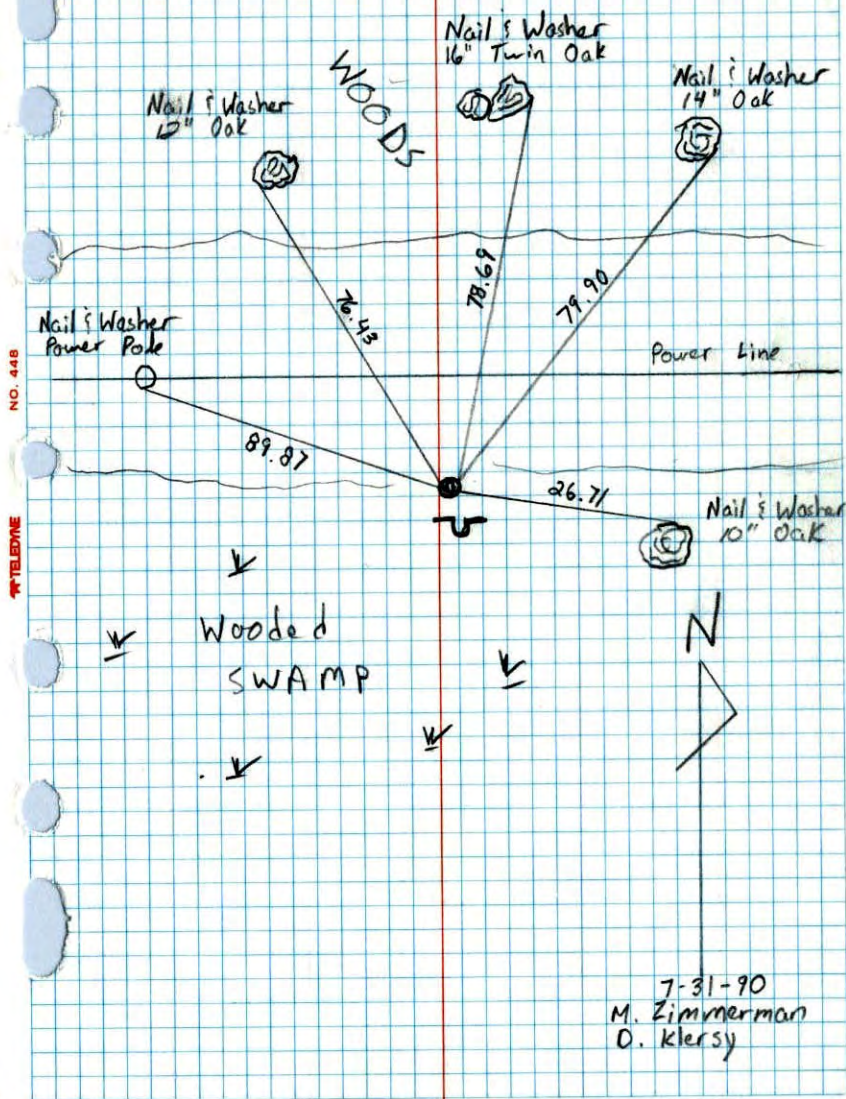
N.A.D.	1983	Co-ordinates
County	Project	Co-ordinates
Northing		<u>135042.8985</u>
Easting		<u>531864.3778</u>
State Plane Co-ordinates		
Y	_____	
X	_____	
Date	<u>2/09/00</u>	



Revised date	Revised date	Revised date
7-31-90		
8-7-95		
2-9-00		

East 1/4 Corner Sec. 36 T31 R23

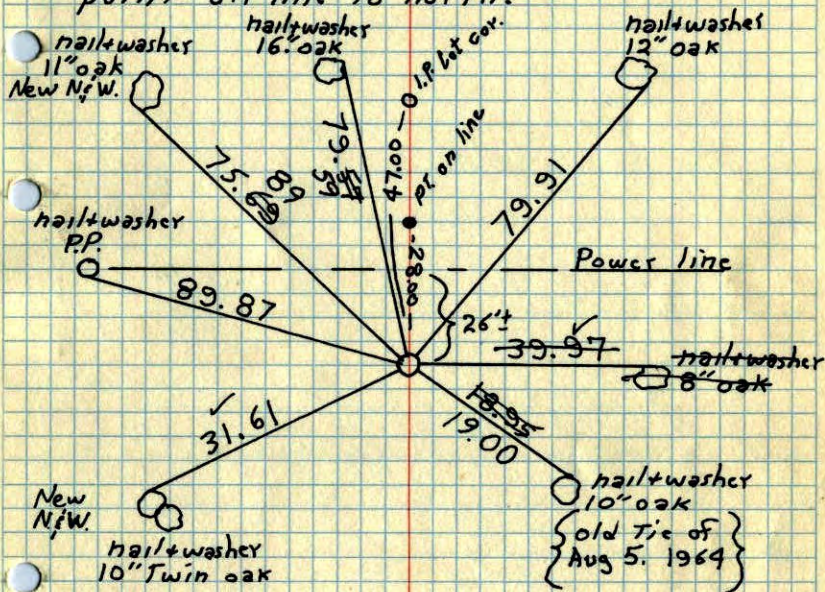
Retied Cast Iron Monument w. Sign Post on South side



NO. 448 TELEPHONE

E 1/4 Cor. Sec. 36 T31 R 23

Set cast iron monument from remaining tie & lot corner and point on line to north.



April 24, 1969  
 M.D. Anderson  
 H. J. Larson  
 R. A. Olson

Tie Check June 3, 1975  
 D. Dahl  
 B. Sannerud  
 G. Adams

10-5-71  
 H. Larson  
 F. Waks  
 M. Jensen

TEMPERATURE CORRECTED  
 AND HORIZONTALLY  
 TAPED MEASUREMENTS

TIE CHECK  
 6-16-80  
 B. STEPHENS  
 P. ROSS  
 P. HORNBY

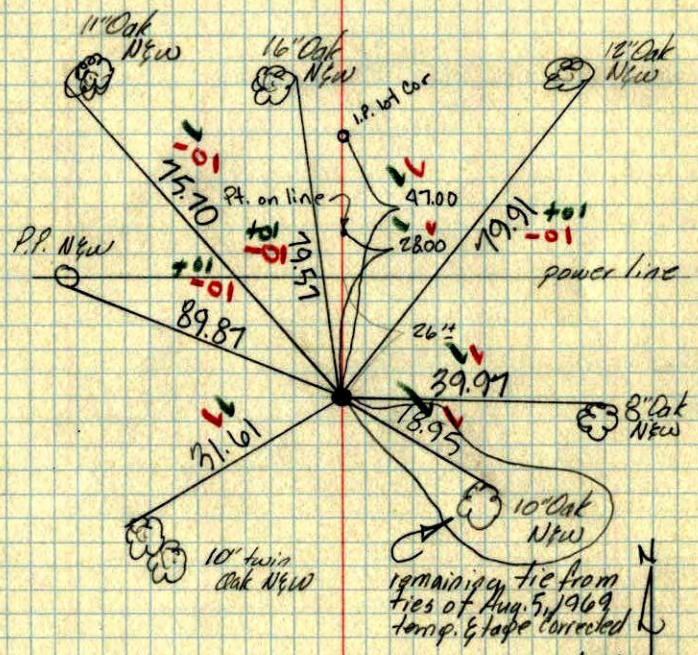
ROLAND W. ANDERSON  
 COUNTY SURVEYOR  
 ANOKA COUNTY, MINNESOTA

TIE CHECK  
 17 AUG 77  
 S. B. EREN  
 J. STEPHENS

1969

E 1/4 Cor. Sec. 36-T31-R23

Reset cor. from remain tie & lot Cor. & pt. on line to north  
set Cast Iron Monument down 0.2'±



remaining tie from ties of Aug. 5, 1969 temp. & tape corrected

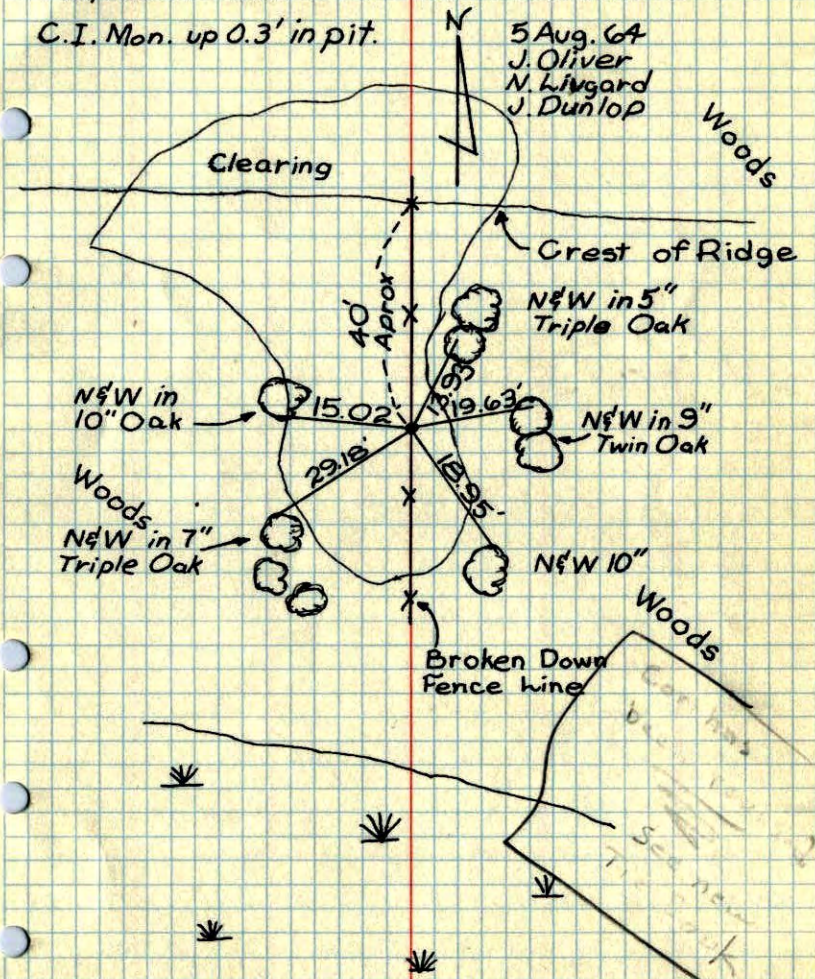
April 24, 1969  
M.D. Anderson  
H.V. Larson  
R.W. Olson  
temp 50°  
tape 6

Use 4/21/69 R.W.A.

1969

E 1/4 Cor. Sec. 36, T31, R23

Found 1/2" I.P. Set by Suburban Eng.  
Replaced with Cast Iron Monument  
C.I. Mon. up 0.3' in pit.



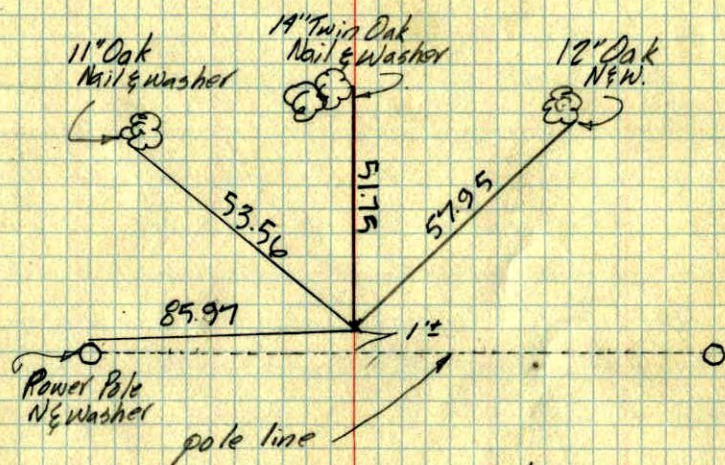
TEMPERATURE CORRECTED  
AND HORIZONTALLY  
TAPED MEASUREMENTS

ROLAND W. ANDERSON  
COUNTY SURVEYOR  
ANOKA COUNTY, MINNESOTA

1  
E 1/4 Cor. Sec. 36-T 31-R 23

1966

found only one tie & cast iron Remaining  
Removed C.I. Mon.  
position tied only (nothing in the ground)

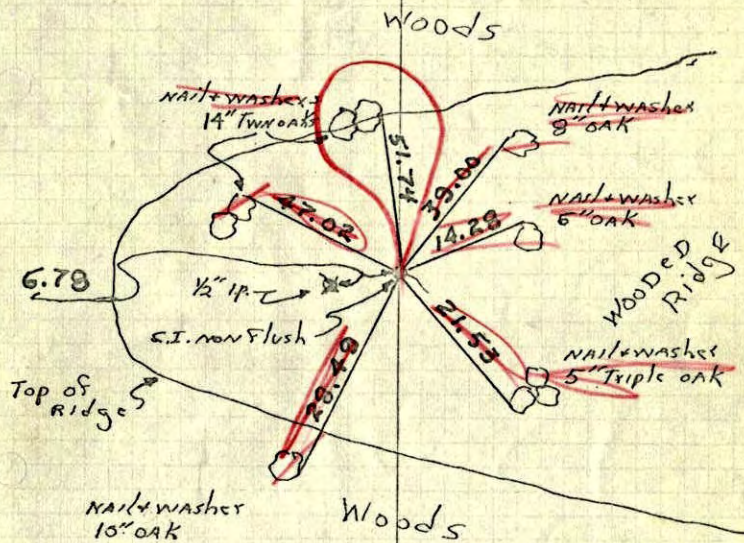


Aug. 9, 1966  
M.D. Anderson  
R. Smith  
D. Powell  
J. Barry  
Temp. 69°

E 1/4 Cor. Sec. 36 T31 R23

1965<sup>106</sup>

Set cast iron monument per found monuments on E.W 1/4 line Sec. 31 T31 R22 and 6.3' E of straight line between SW & NW cor of Sec. 31-31, 22 (to conform with lines of occupation N. end of Baldwin Lake Rd.) This cor. is 23.00' N. of 1/4 as set by Suburban Eng. and on line between Suburbans cor. and S.W. cor Sec. 31-31-22 extended. See Field notes on file.



nail washer  
10\"/>

Woods

MAY 26 1965

J. OLIVER  
M.D. ANDERSON  
H. LARSON

N

Hold until meeting  
has been held with  
Suburban Eng.

TEMPERATURE CORRECTED  
AND HORIZONTALLY  
TAPED MEASUREMENTS

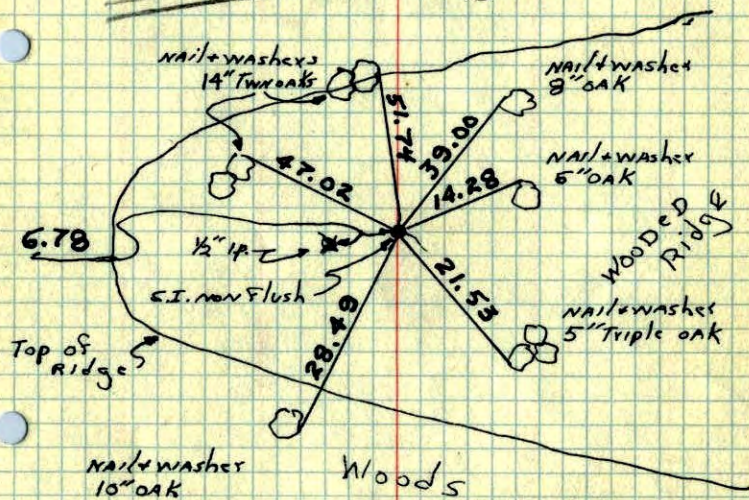
ROLAND W. ANDERSON  
COUNTY SURVEYOR  
ANOKA COUNTY, MINNESOTA

1965 106

1. E 1/4 Cor. Sec. 36 T31 R23

Set Cast Iron monument per Found monuments on E. W 1/4 line Sec. 31 T31 R22 and 6.3' ± E of straight line between SW & NW cor of Sec. 31-31, 22 (to conform with lines of occupation N. end of N. end of Baldwin Lake Rd.) This cor. is 28.00' N. of 1/4 as set by Suburban Eng. and on line between Suburban cor. and SW cor Sec. 31-31-22 extended. See Field notes on file.

Do Not Use  
Woods



MAY 26 1965

J. OLIVER  
M.D. ANDERSON  
H. LARSON

Hold until meeting  
has been held with  
Suburban Eng.

TEMPERATURE CORRECTED  
AND HORIZONTALLY  
TAPED MEASUREMENTS

ROLAND W. ANDERSON  
COUNTY SURVEYOR  
ANOKA COUNTY, MINNESOTA

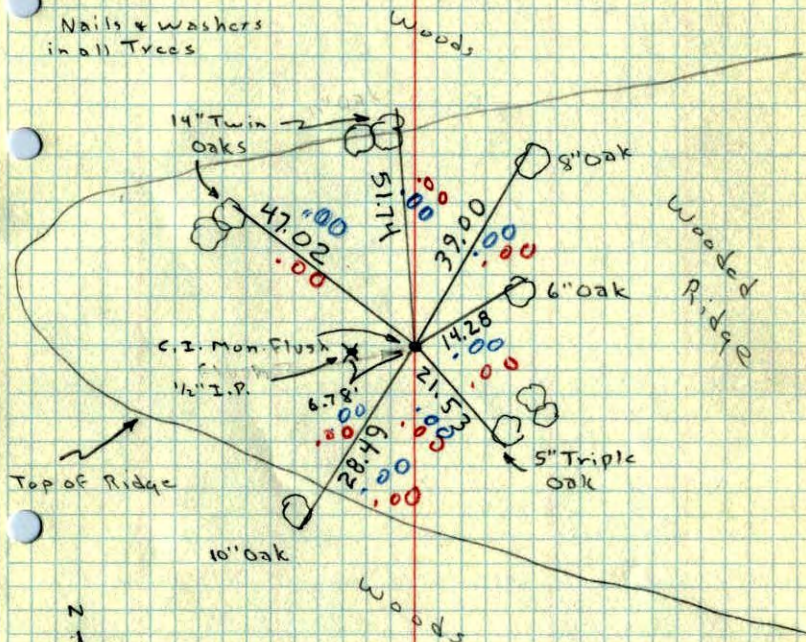
Revised

1965

E 1/4 Cor. Sec. 36, T31, R23

Set Cast Iron Monument per Found Monuments on E-W 1/4 line Sec. 31, T31, R22 and 6.3' ± E. of straight line between SW & NW Cors of Sec. 31-31-22 (To conform with lines of occupation North of North End of Baldwin Lake Rd.) This Cor. is 28.00' North of 1/4 as set by Suburban Eng. and on line between Suburban Corner and SW cor. Sec. 31-31-22 extended. See Field notes on file

Nails & washers  
in all Trees



MAY 26, 1965

60° ± 5  
J. OLIVER  
M.D. ANDERSON  
H. LARSON

TEMPERATURE CORRECTED  
AND HORIZONTALLY  
TAPED MEASUREMENTS

ROLAND W. ANDERSON  
COUNTY SURVEYOR  
ANOKA COUNTY, MINNESOTA



1964

E 1/4 Cor. Sec. 36, T31, R23

Found 1/2" I.P. Set by Suburban Engr.

Replaced with Cast Iron Monument

