

CERTIFICATE OF LOCATION OF GOVERNMENT CORNER

County of Anoka

State of Minnesota

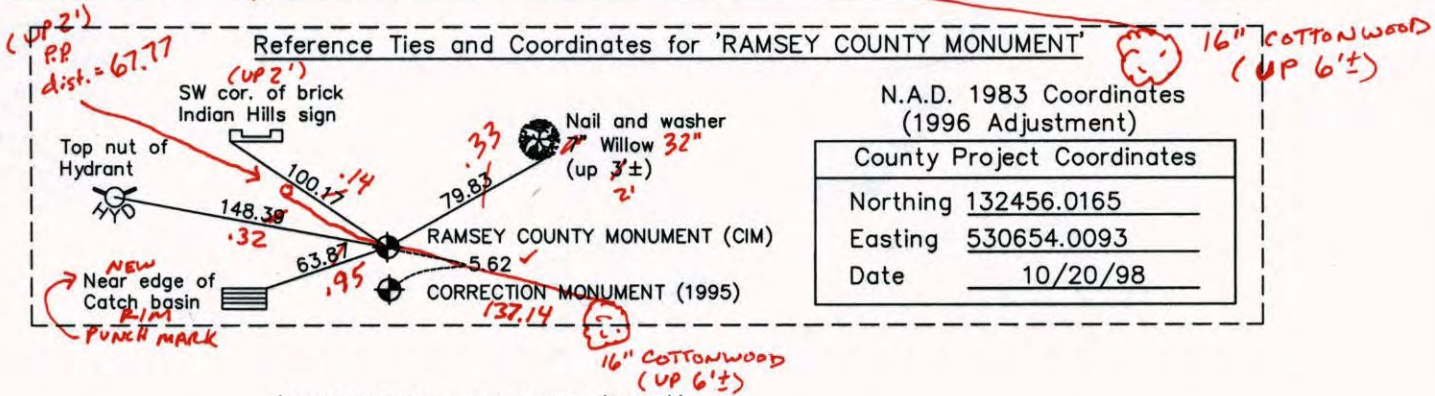
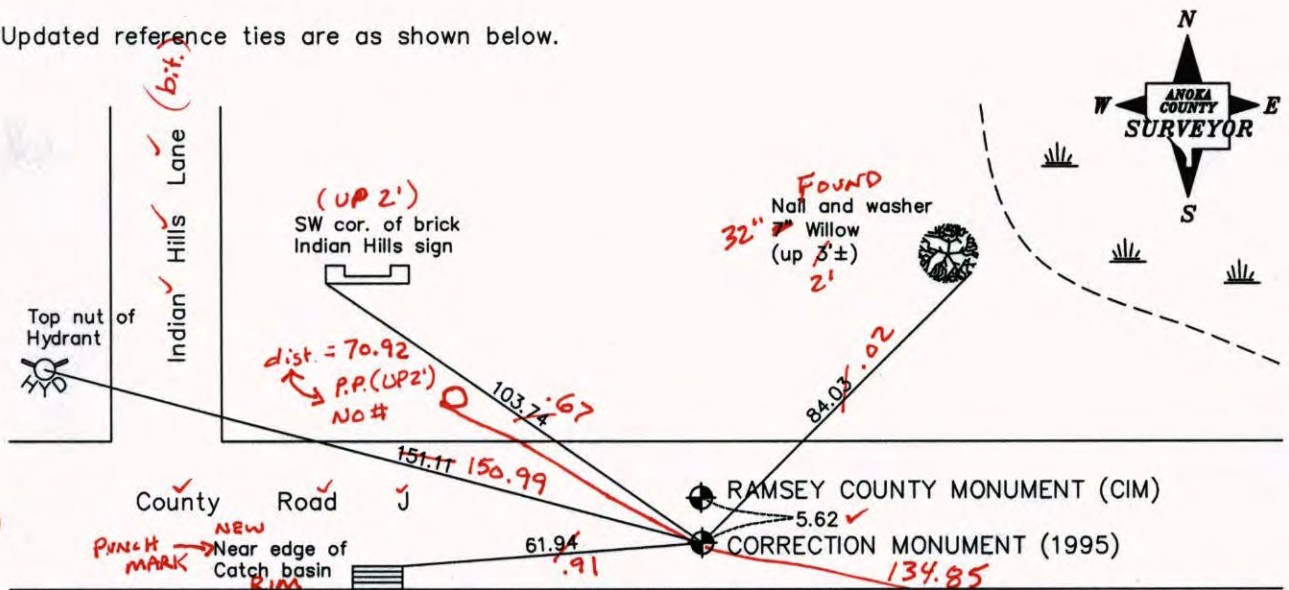
Northeast Corner of Sec. 3 Township 30 Range 23
(RAMSEY COUNTY MONUMENT)

On the 26th day of October, 1963, the described corner was evidenced by a granite monument

and to perpetuate the location of said corner, at the exact location thereof, a permanent marker was placed consisting of a cast iron monument

AND on the ___ day of _____, _____, said permanent marker was _____

Updated reference ties are as shown below.



N.A.D. 1983 Coordinates (1996 Adjustment)	
County Project Coordinates	
Northing	132456.0165
Easting	530654.0093
Date	10/20/98

'CORRECTION MONUMENT (1995)'

7-17-14
BK-SS
TOTAL
VRS

Revised date
7/25/90
6/07/95
10/19/98

N.A.D. 1983 Coordinates (1996 Adjustment)	
County Project Coordinates	
Northing	132450.2762
Easting	530654.1274
Date	10/19/98

I hereby certify that this United States public land survey monument record is correct and complete to the best of my knowledge and belief.

_____, Anoka County Surveyor

Minnesota License Number _____

VRS < (1995) 3DQ = 0.07 N = 132450.3827 E = 530654.9761
(C.I.M.) 3DQ = 0.07 N = 132456.0072 E = 530654.0255

CERTIFICATE OF LOCATION OF GOVERNMENT CORNER

County of Anoka

State of Minnesota

Northeast Corner of Sec. 3 Township 30 Range 23

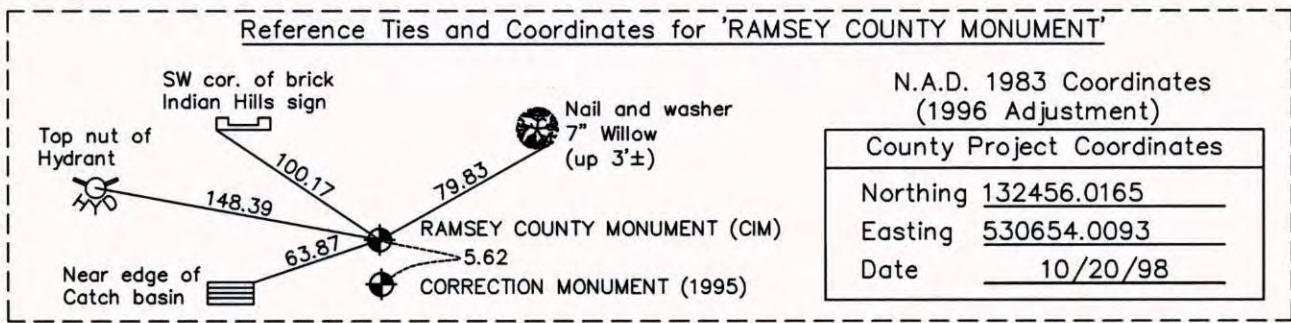
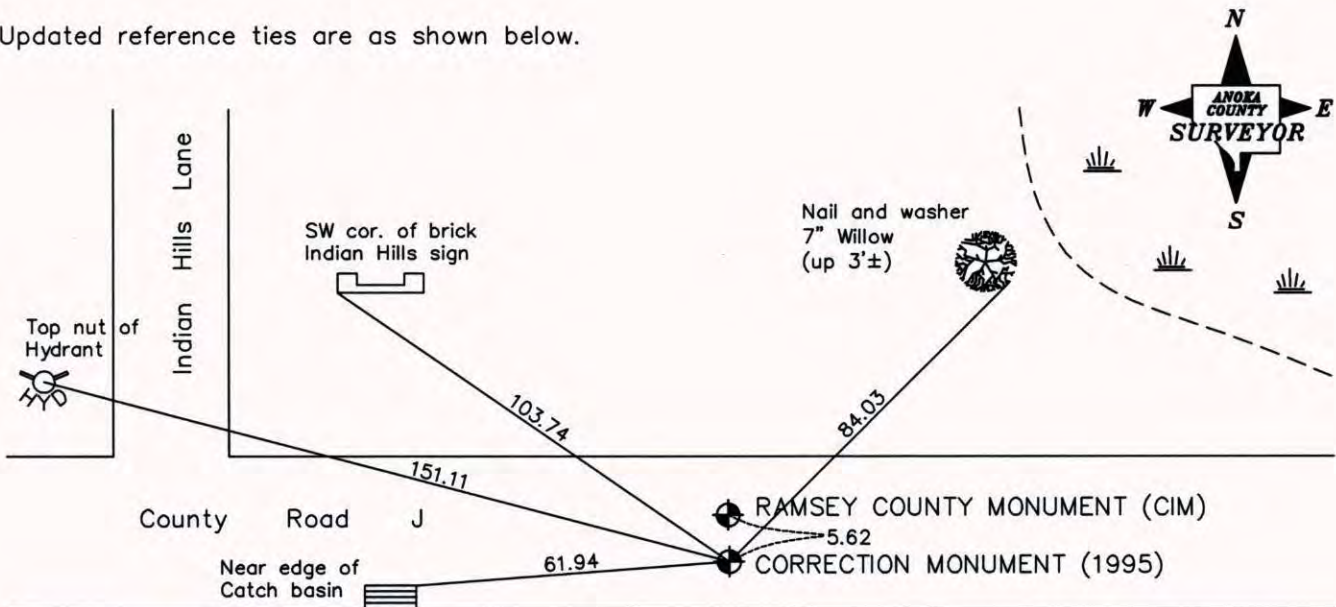
(RAMSEY COUNTY MONUMENT)

On the 26th day of October, 1963, the described corner was evidenced by a granite monument

and to perpetuate the location of said corner, at the exact location thereof, a permanent marker was placed consisting of a cast iron monument

AND on the ___ day of _____, _____, said permanent marker was _____

Updated reference ties are as shown below.



'CORRECTION MONUMENT (1995)'

N.A.D. 1983 Coordinates (1996 Adjustment)

County Project Coordinates

Northing 132450.2762

Easting 530654.1274

Date 10/19/98

Revised date

7/25/90
6/07/95
10/19/98

I hereby certify that this United States public land survey monument record is correct and complete to the best of my knowledge and belief.

_____, Date _____

_____, Anoka County Surveyor

Minnesota License Number _____

CERTIFICATE OF LOCATION OF GOVERNMENT CORNER

County of Anoka

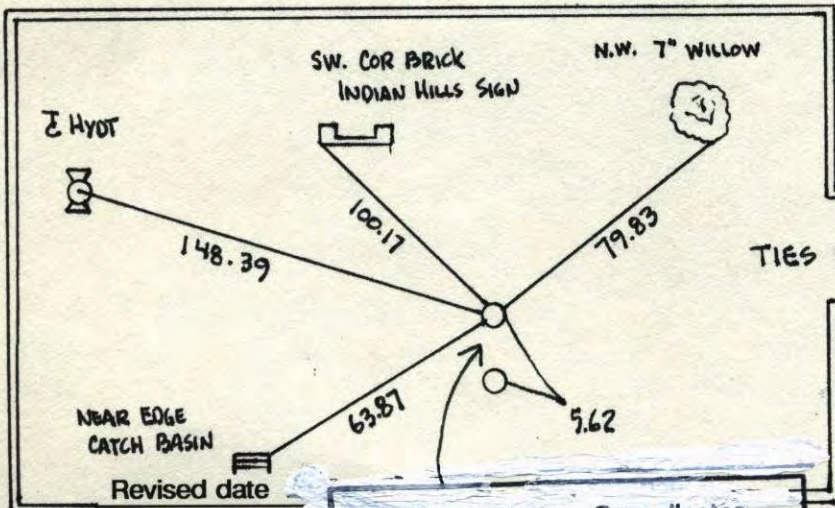
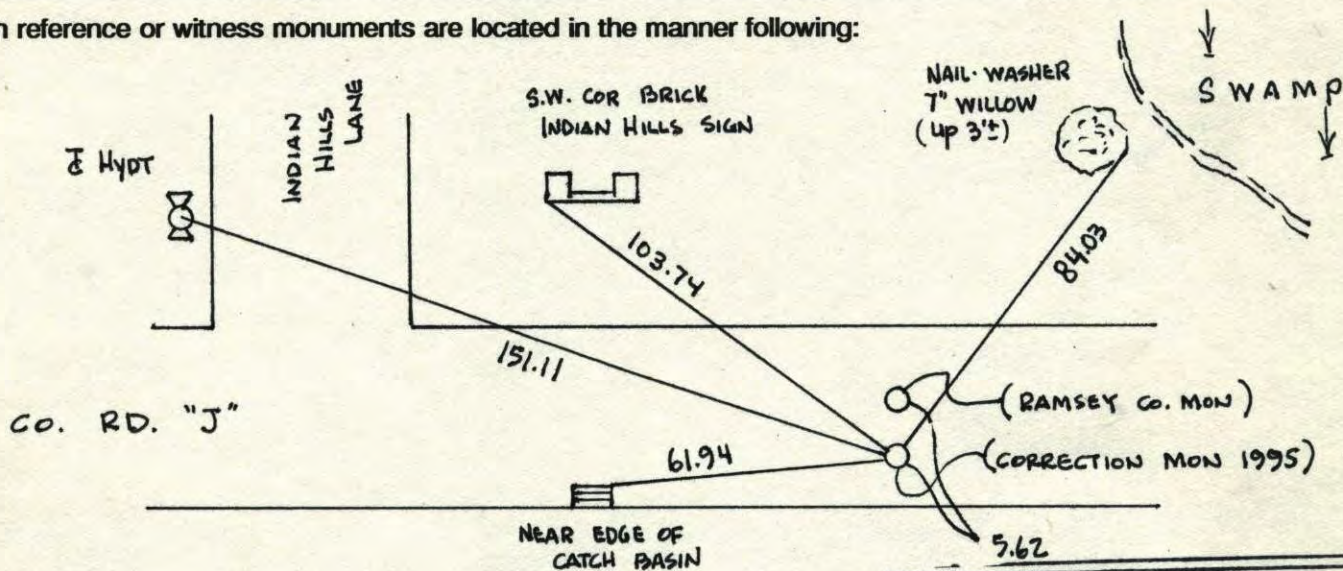
State of Minnesota

NORTHEAST Corner of Sec. 3 Township 30 Range 23
 (RAMSEY CO.)

I hereby certify that on the 26TH day of OCTOBER, 1963, I found the described corner which was evidenced by GRANITE MONUMENT

and I further certify that to perpetuate the location of said corner, I did, at the exact location thereof, place a permanent marker consisting of CAST IRON MONUMENT

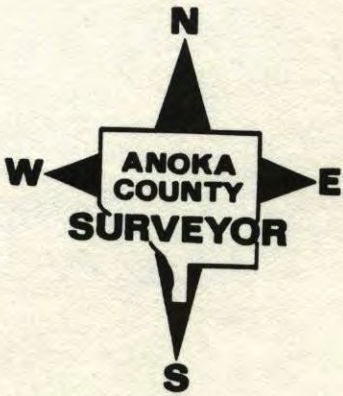
which reference or witness monuments are located in the manner following:



N.A.D.	1983	Co-ordinates
County	Project	Co-ordinates
Northing		<u>132450.2762</u>
Easting		<u>530654.1274</u>
State Plane Co-ordinates		
TIES FOR RAMSEY CO. MON		
Date		<u>10/19/98</u>

Revised date
<u>6-10-86</u>
<u>7-25-90</u>
<u>6-7-95</u>
<u>10-19-98</u>

N.A.D.	1983	Co-ordinates
County	Project	Co-ordinates
Northing		<u>132456.0165</u>
Easting		<u>530654.0093</u>
State Plane Co-ordinates		
Date <u>10/20/98</u>		



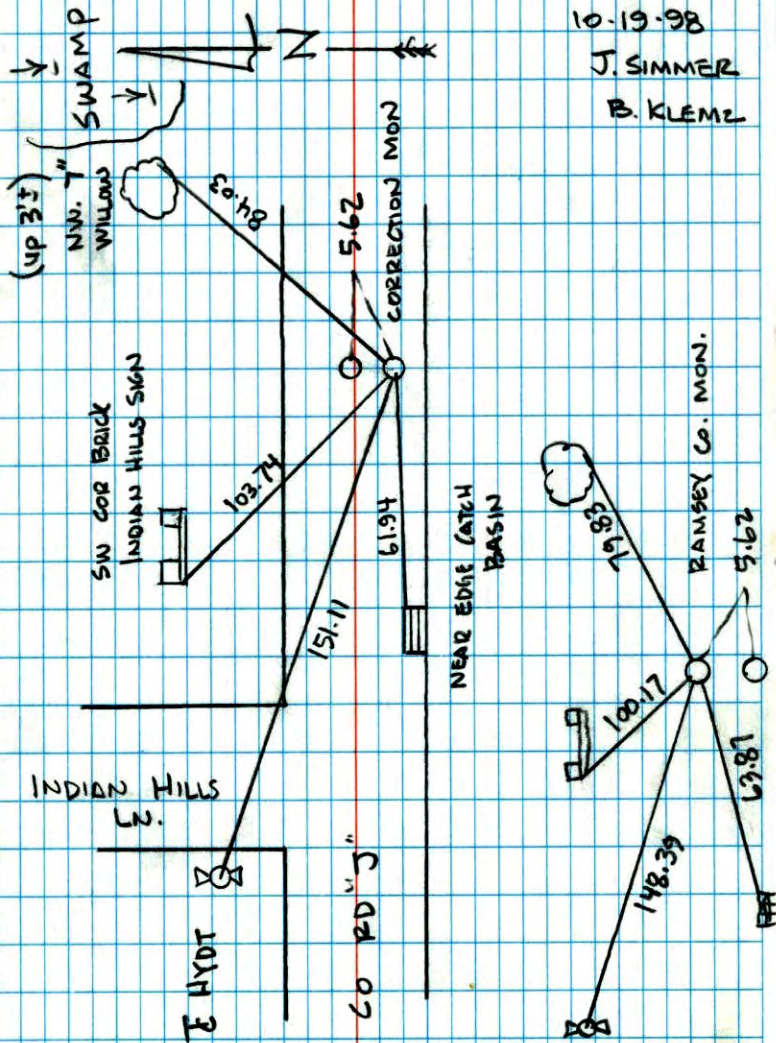
NORTHEAST COR. SEC. 3 T. 30 R. 23 (RAMSEY CO.)

RETIED RAMSEY & CORRECTION MON'S.

10-19-98

J. SIMMER

B. KLEML



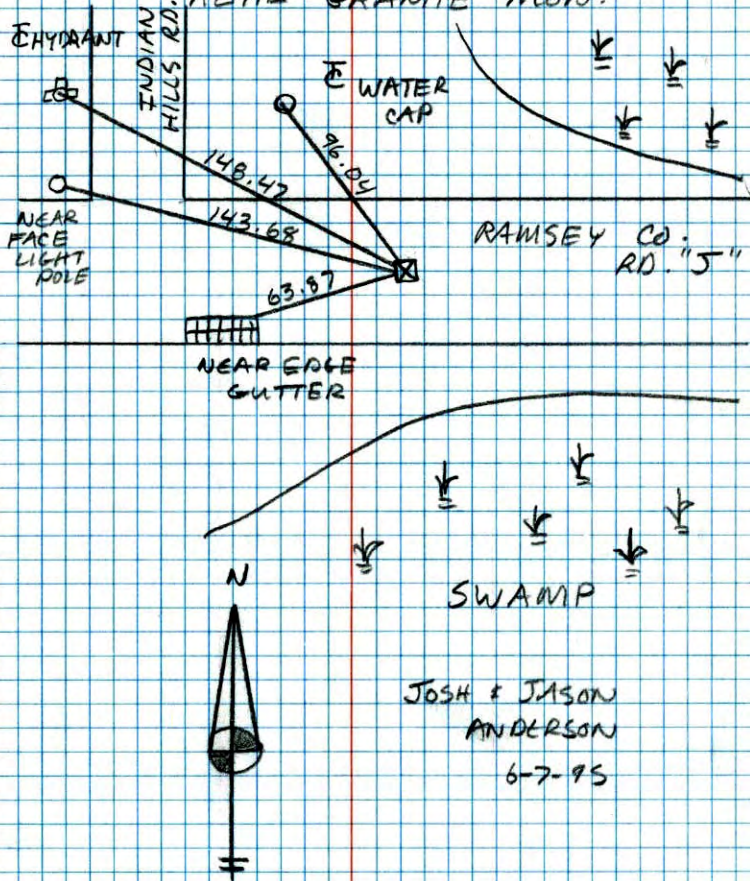
NO. 446

NATIONAL PRINTFAST

NE CORNER SEC. 3 TW. 30 R. 23

(RAMSEY CO.)

RETIE GRANITE MON.



NO. 448

TELEPHONE

JOSH & JASON
ANDERSON
6-7-95

NORTHEAST corner sec. 3

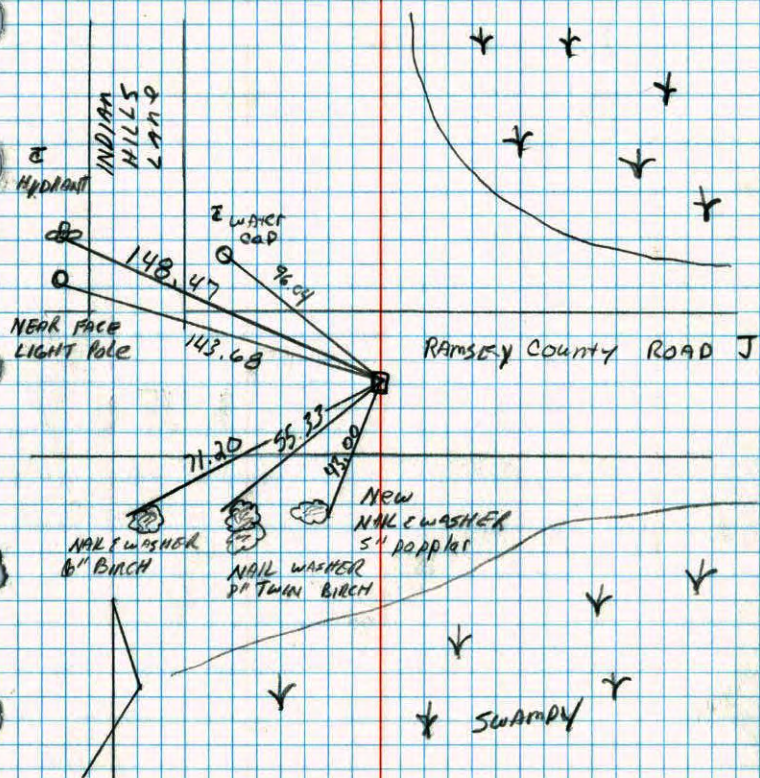
T30 R23

(RAMSEY COUNTY)

Revised Granite monument

NO. 448

TELEPHONE



7-25-90

D. KLEISY

m. ZIMMERMAN

N.E. CORNER SECTION 3 - T30 - R23
(RAMSEY COUNTY)

FOUND 8" SQUARE GRANITE MONUMENT WITH DRILL HOLE IN CENTER.
GRANITE FLUSH AND 2" S NORTH OF CENTERLINE. P.M'S 2.00'
NORTH AND EAST.

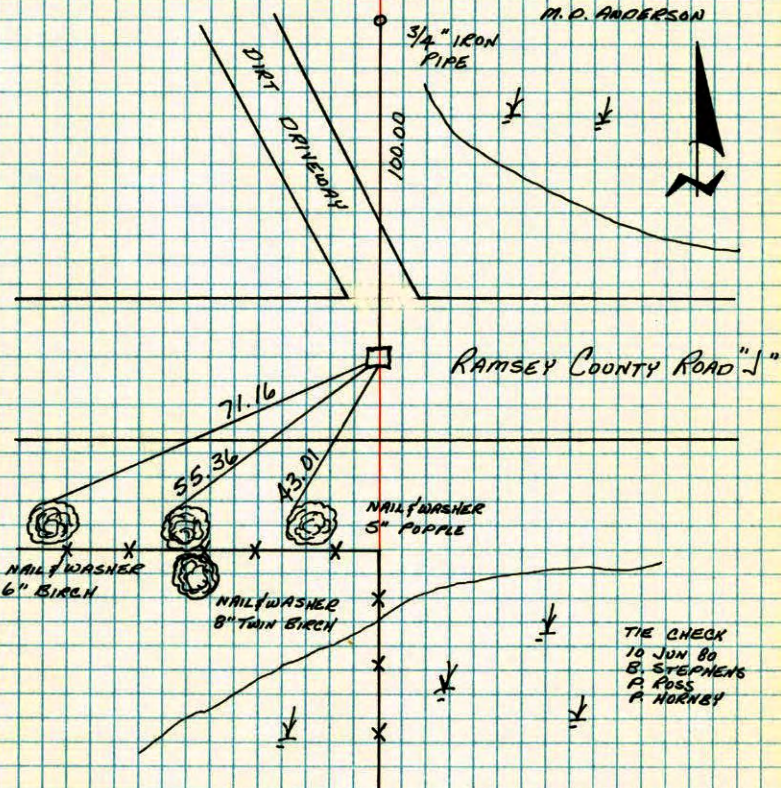
26 OCT 63

J. OLIVER

M.D. ANDERSON

NO. 448

TELEPHONE



TEMPERATURE CORRECTED
AND HORIZONTALLY
TAPED MEASUREMENTS

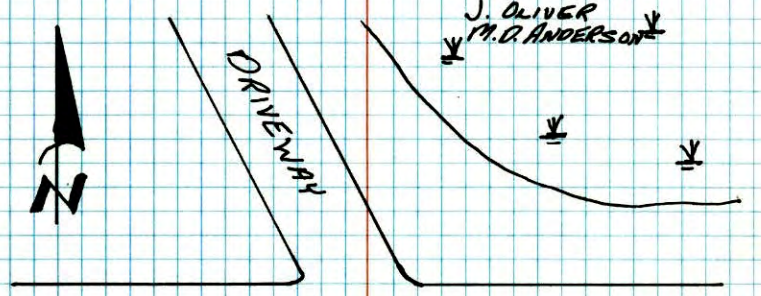
ROLAND W. ANDERSON
COUNTY SURVEYOR
ANOKA COUNTY, MINNESOTA

THE CHECK
10 JUN 80
B. STEPHENS
R. POSS
A. HORNBY

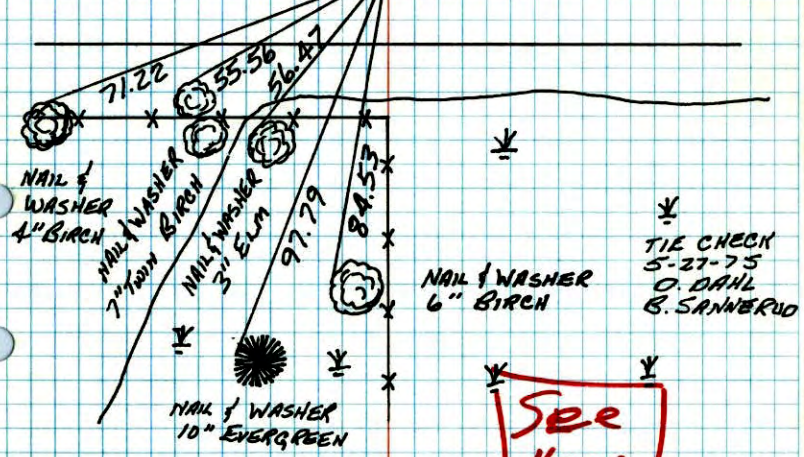
NE. COR. SEC. 3, T30, R23 (RAMSEY COUNTY)

FOUND 8" SQUARE GRANITE MONUMENT WITH DRILL HOLE IN CENTER (FLUSH) 2'± NORTH OF E.
PX'S 2.00' NORTH AND EAST.

26 APR 63
J. OLIVER
M.D. ANDERSON



RAMSEY COUNTY ROAD "J"



**See
New
Trees!**

TEMPERATURE CORRECTED
AND HORIZONTALLY
TAPED MEASUREMENTS

ROLAND W. ANDERSON
COUNTY SURVEYOR
ANOKA COUNTY, MINNESOTA

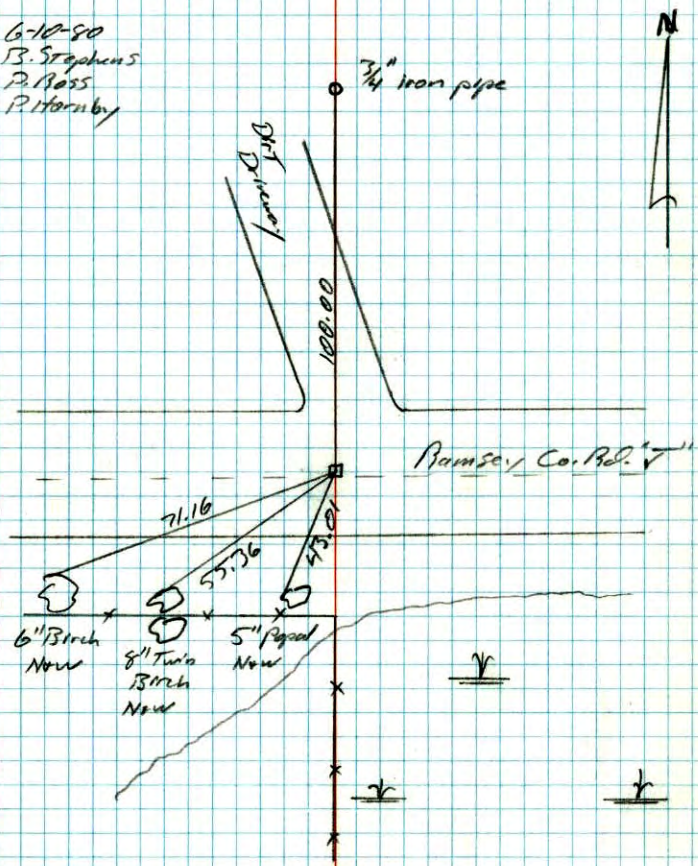
REDRAWN
JAN '77
B. GUETZKO

(178)

NE Cor. Sec. 3 T-30 R-23 (Ramsey Co.)

8" square granite monument with drill hole in center down .25"

6-10-80
B. Stephens
P. Ross
P. Hornby



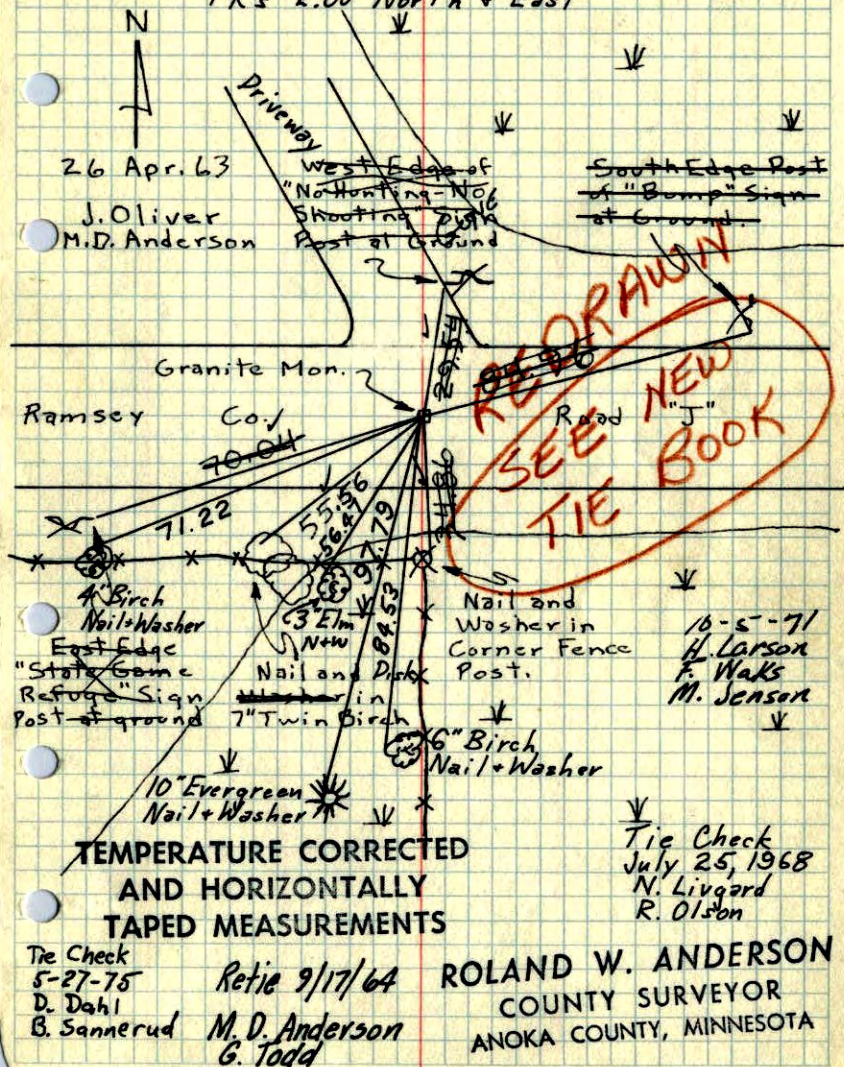
NO. 448

TELEPHONE

NE Cor. Sec. 3, T30, R23 (Ramsey Co.)

Found 8" Sq. Granite Monument with drill
hole in Center (Flush) 2'± North of E.

PK's 2.00' North & East



Between SE & SW 1/4 36, 31, 23

NE Cor. Sec. 3, T30, R23 (Ramsey Co.)

Found 8" Sq. Granite with drill hole in
Center (Flush)

