

# CERTIFICATE OF LOCATION OF GOVERNMENT CORNER

County of Anoka State of Minnesota

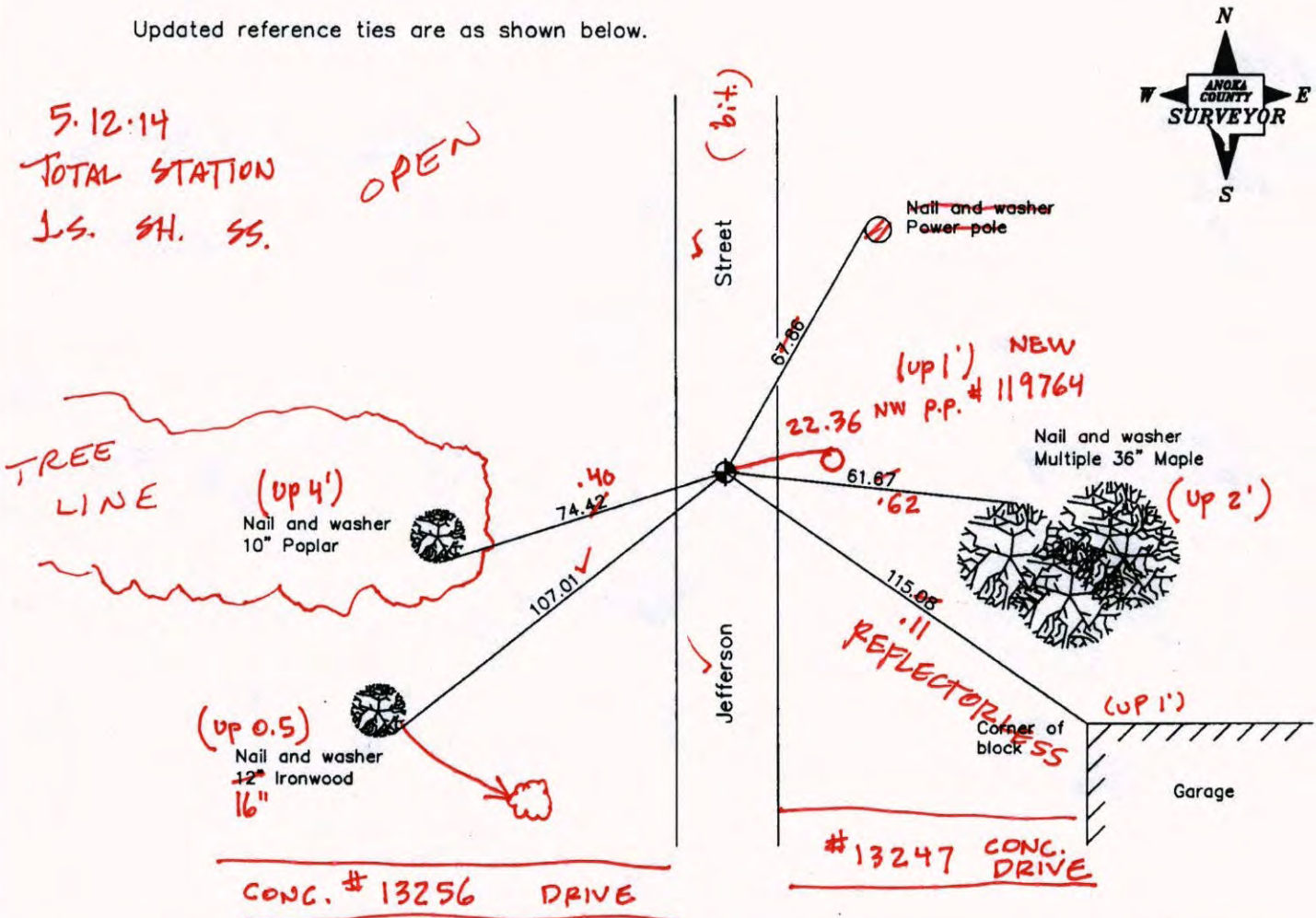
North 1/4 Corner of Sec. 6 Township 31 Range 23

On the 14th day of April, 1959, the described corner was evidenced by a concrete monument

and to perpetuate the location of said corner, at the exact location thereof, a permanent marker was placed consisting of a cast iron monument ± 1' E of C

AND on the 27th day of April, 2006, said permanent marker was found and the ties were updated

Updated reference ties are as shown below.



Revised date

7/28/95
10/12/98
4/27/06

N.A.D. 1983 Coordinates  
(1996 Adjustment)

County Project Coordinates	
Northing	164267.8964
Easting	503006.1215
Date	10/12/98

I hereby certify that this United States public land survey monument record is correct and complete to the best of my knowledge and belief.

*Larry D. Haim* Date 4/27/06  
 Larry D. Haim, Anoka County Surveyor  
 Minnesota License Number 18165

VRS  
COORD'S

N: 164267.8805  
 E: 503006.1234

3D Q = 0.05

# CERTIFICATE OF LOCATION OF GOVERNMENT CORNER

County of Anoka

State of Minnesota

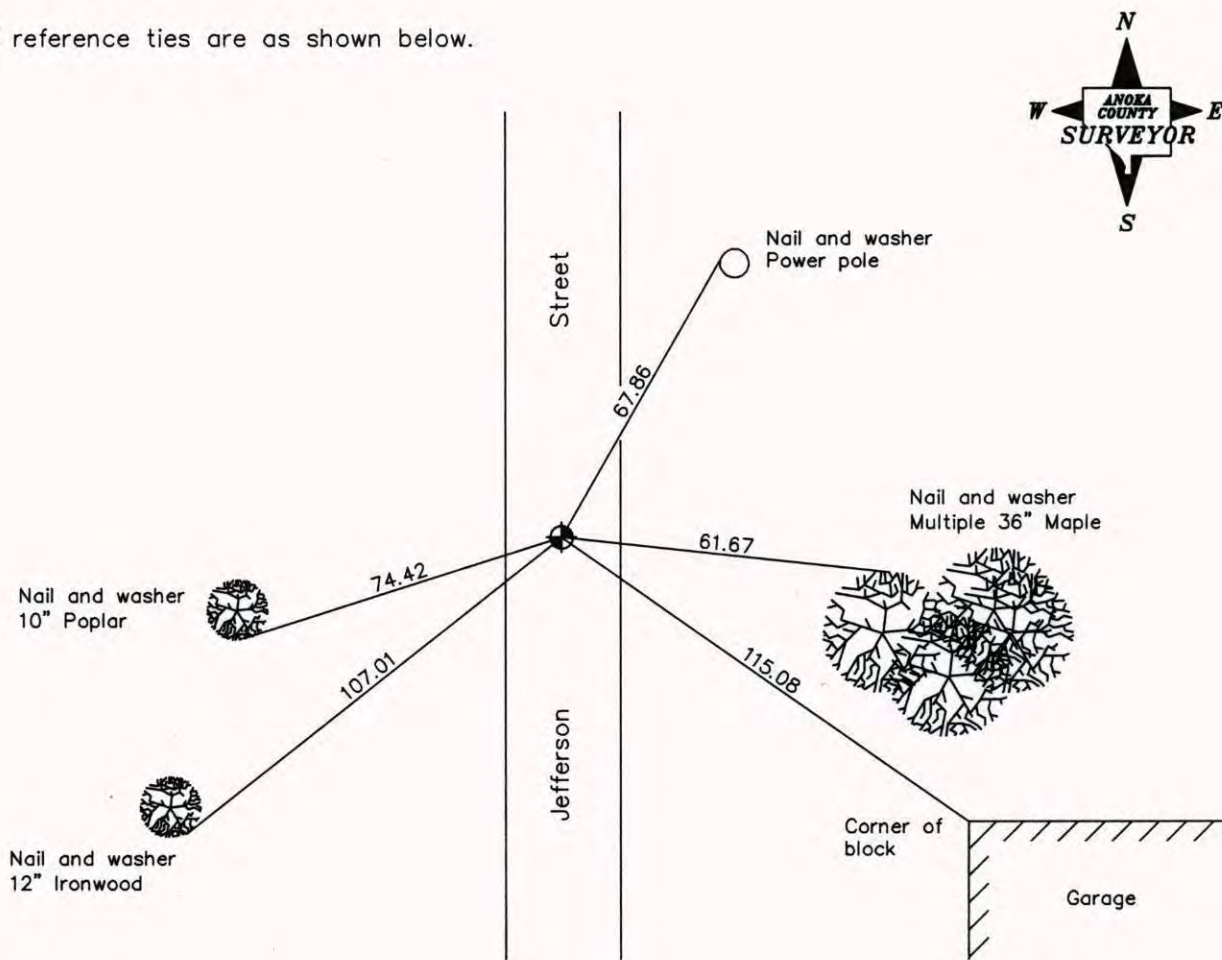
North 1/4 Corner of Sec. 6 Township 31 Range 23

On the 14th day of April, 1959, the described corner was evidenced by a concrete monument

and to perpetuate the location of said corner, at the exact location thereof, a permanent marker was placed consisting of a cast iron monument

AND on the 27th day of April, 2006, said permanent marker was found and the ties were updated

Updated reference ties are as shown below.



Revised date
7/28/95
10/12/98
4/27/06

N.A.D. 1983 Coordinates (1996 Adjustment)	
County Project Coordinates	
Northing	<u>164267.8964</u>
Easting	<u>503006.1215</u>
Date	<u>10/12/98</u>

I hereby certify that this United States public land survey monument record is correct and complete to the best of my knowledge and belief.

*Larry D. Hoium* Date: 4/27/06

Larry D. Hoium, Anoka County Surveyor

Minnesota License Number 18165

# CERTIFICATE OF LOCATION OF GOVERNMENT CORNER

County of Anoka

State of Minnesota

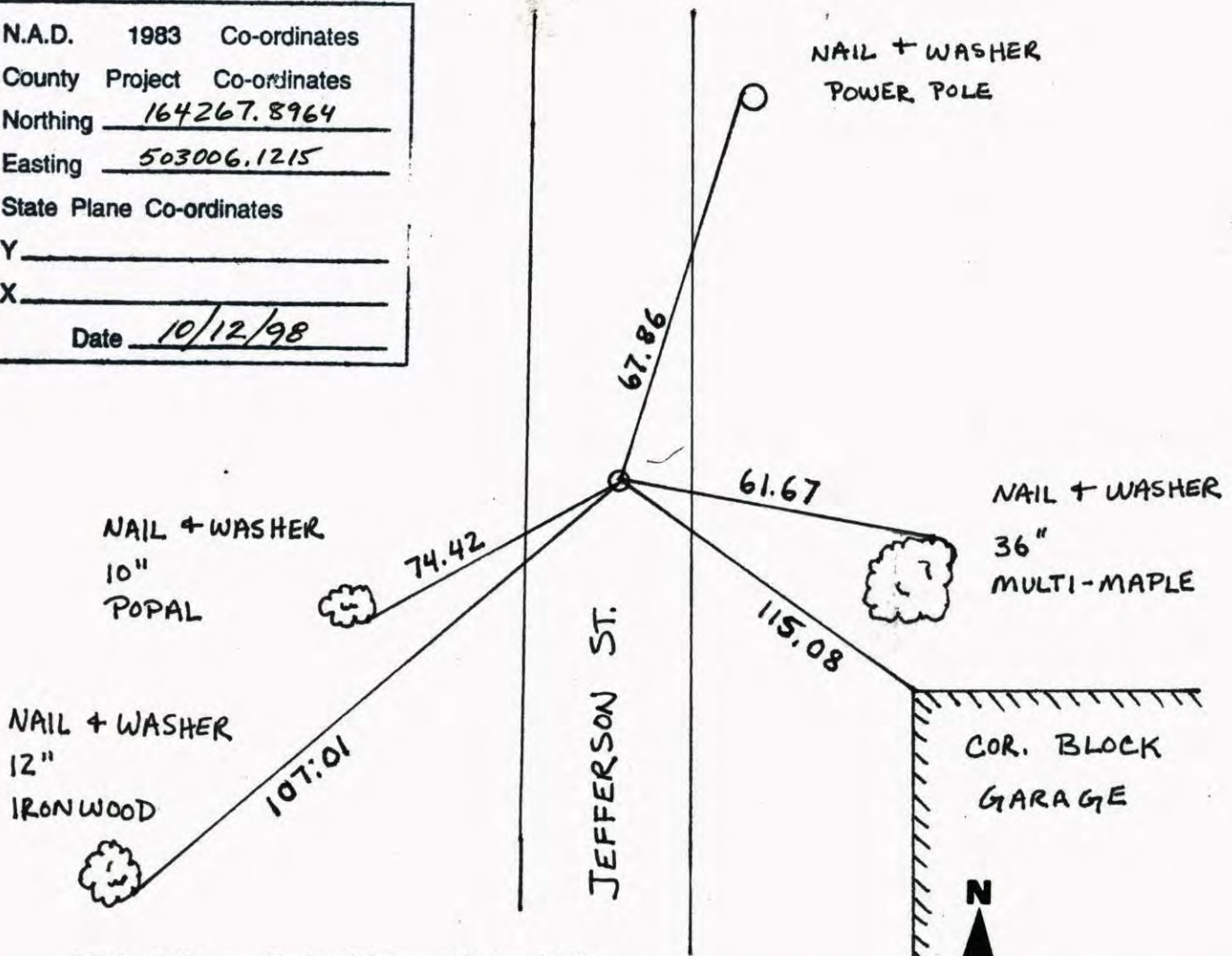
NORTH 1/4 Corner of Sec. 6 Township 31 Range 23

I hereby certify that on the 14<sup>th</sup> day of APRIL, 19 59, I found the described corner which was evidenced by CONCRETE MONUMENT

and I further certify that to perpetuate the location of said corner, I did, at the exact location thereof, place a permanent marker consisting of CAST IRON MONUMENT

which reference or witness monuments are located in the manner following:

N.A.D.	1983	Co-ordinates
County	Project	Co-ordinates
Northing		<u>164267.8964</u>
Easting		<u>503006.1215</u>
State Plane Co-ordinates		
Y _____		
X _____		
Date		<u>10/12/98</u>



Revised date	Revised date	Revised date
<u>6-28-90</u>		
<u>7-28-95</u>		
<u>10-12-98</u>		
<u>4-27-06</u>		



# CERTIFICATE OF LOCATION OF GOVERNMENT CORNER

County of Anoka                      State of Minnesota

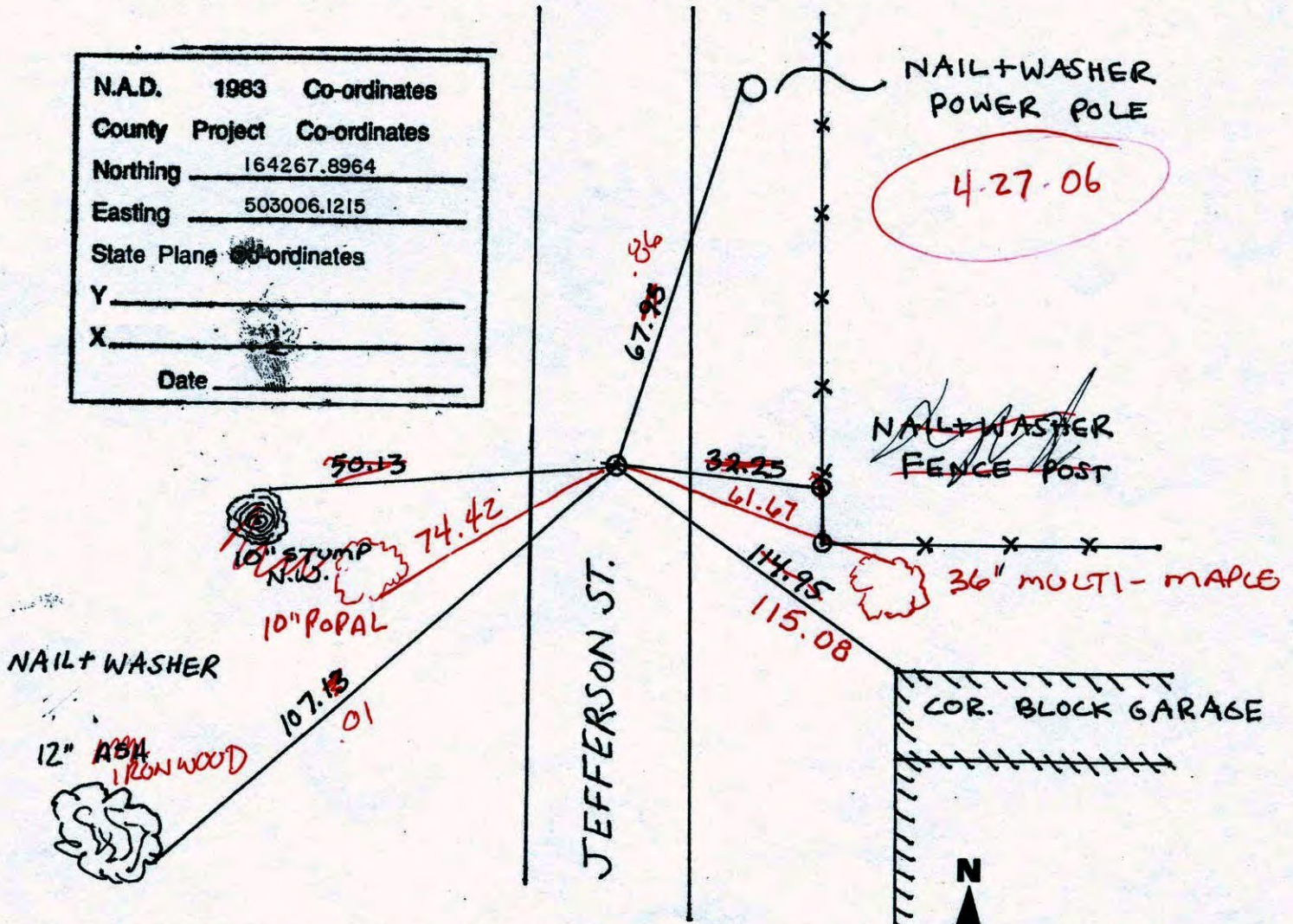
NORTH 1/4 Corner of Sec. 6 Township 31 Range 23

I hereby certify that on the 28<sup>th</sup> day of JUNE, 1990, I found the described corner which was evidenced by CONCRETE MONUMENT

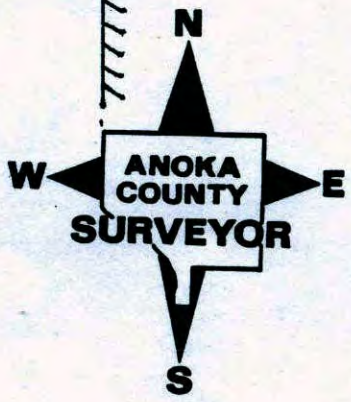
and I further certify that to perpetuate the location of said corner, I did, at the exact location thereof, place a permanent marker consisting of CAST IRON MONUMENT

which reference or witness monuments are located in the manner following:

N.A.D.	1983	Co-ordinates
County	Project	Co-ordinates
Northing	<u>164267.8964</u>	
Easting	<u>503006.1215</u>	
State Plane	Co-ordinates	
Y	_____	
X	_____	
Date	_____	



Revised date	Revised date	Revised date
6-28-90		
7-28-95		
10-12-98		



# CERTIFICATE OF LOCATION OF GOVERNMENT CORNER

County of Anoka

State of Minnesota

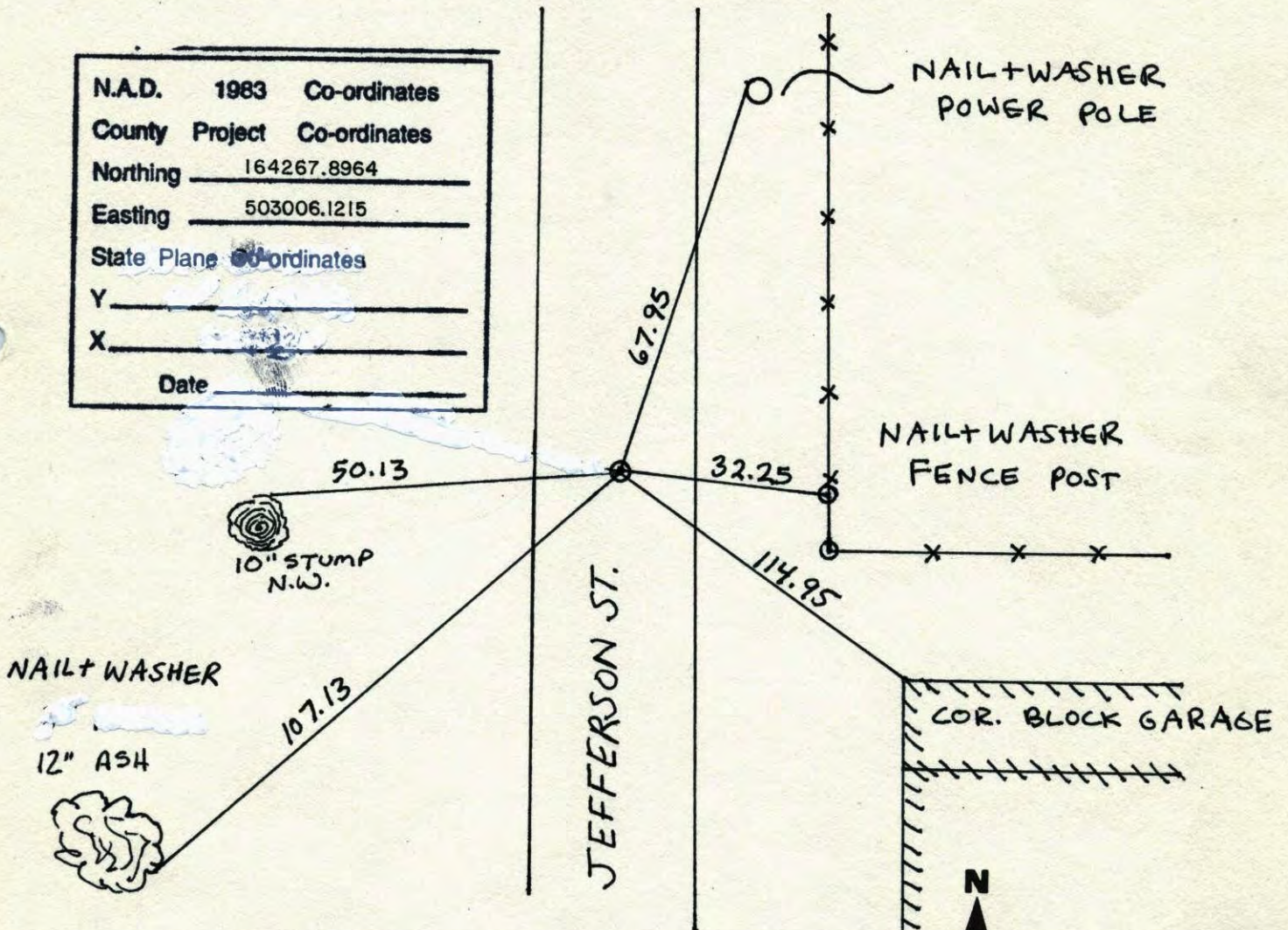
NORTH 1/4 Corner of Sec. 6 Township 31 Range 23

I hereby certify that on the 28<sup>14<sup>th</sup></sup> day of JUNE<sup>APRIL</sup>, 19 90<sup>89</sup>, I found the described corner which was evidenced by CONCRETE MONUMENT

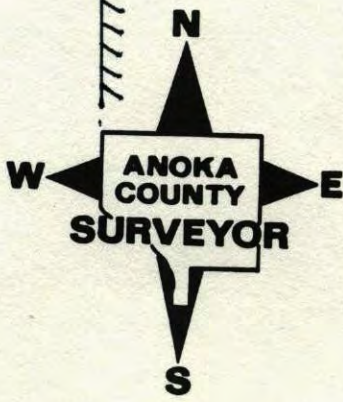
and I further certify that to perpetuate the location of said corner, I did, at the exact location thereof, place a permanent marker consisting of CAST IRON MONUMENT

which reference or witness monuments are located in the manner following:

N.A.D.	1983	Co-ordinates
County	Project	Co-ordinates
Northing	164267.8964	
Easting	503006.1215	
State Plane	Co-ordinates	
Y	_____	
X	_____	
Date	_____	



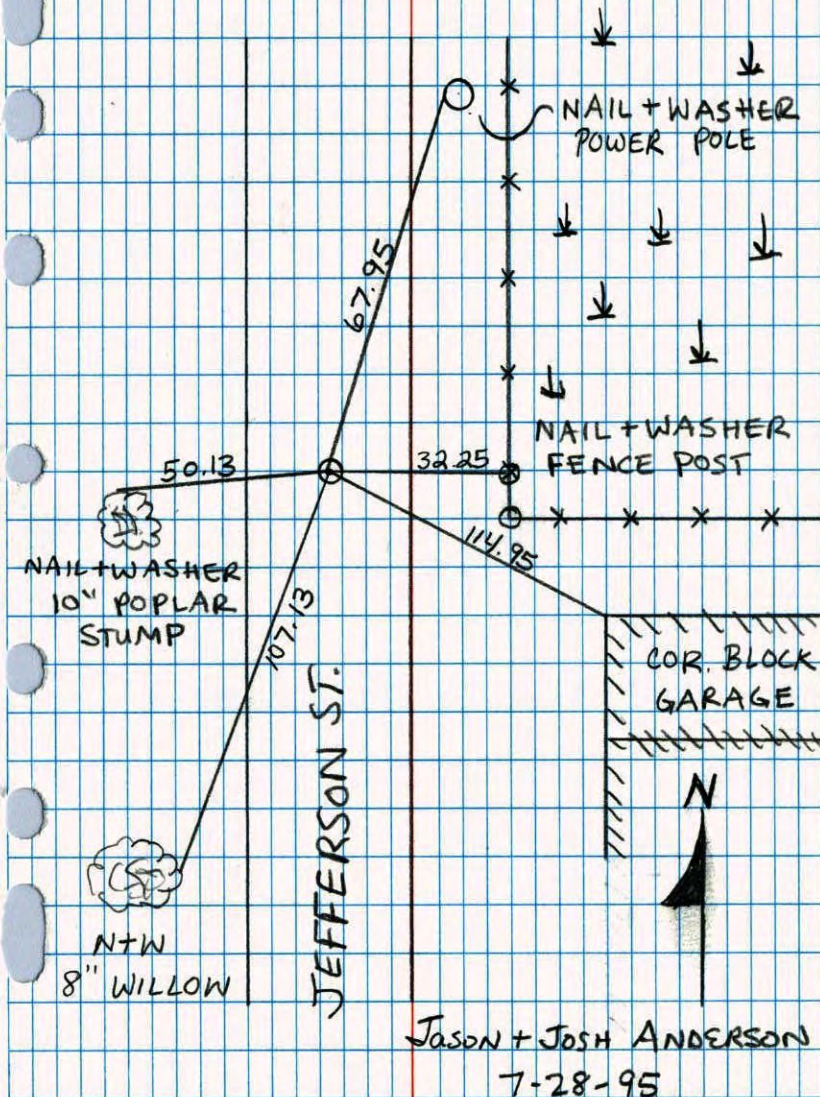
Revised date	Revised date	Revised date
6-28-90		
7-28-95		
10-12-98		



NORTH 1/4 SEC. 6 TW. 31 R. 23

RETIE CAST IRON MONUMENT

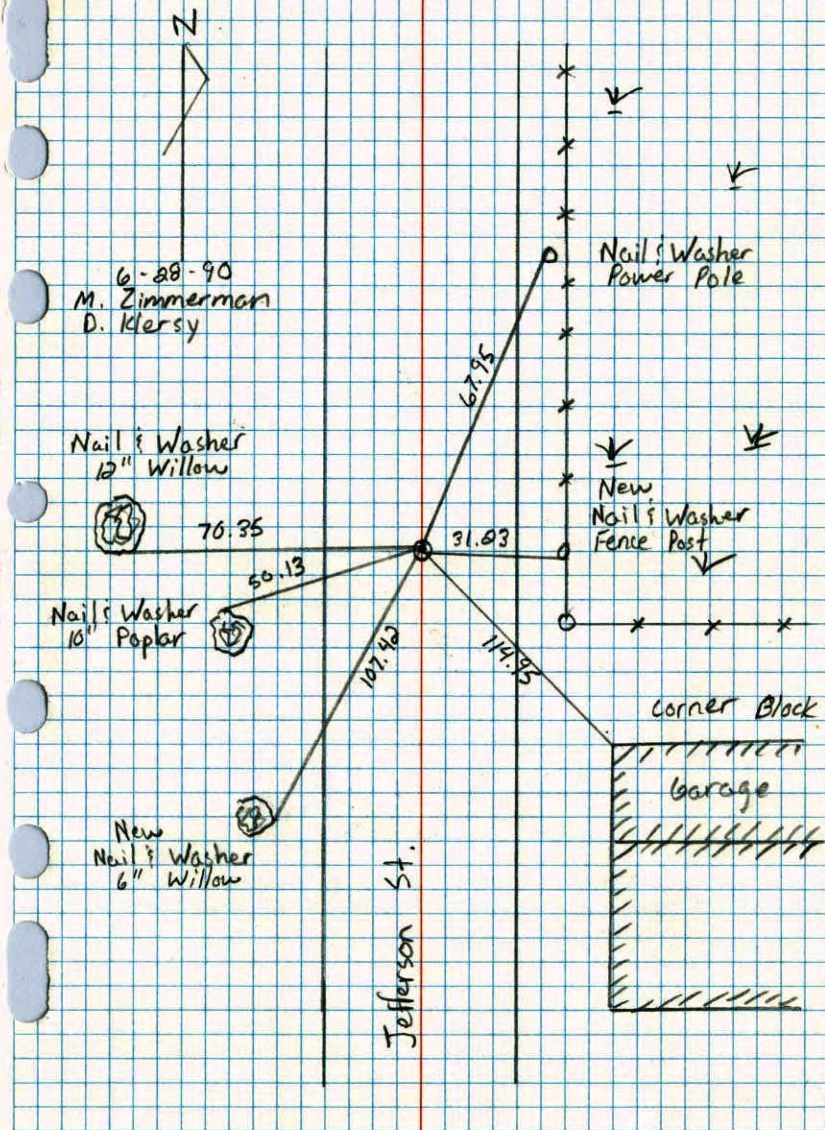
NO. 446 NATIONAL PRIORITY



North 1/4 Corner Sec. 6 T31 R23

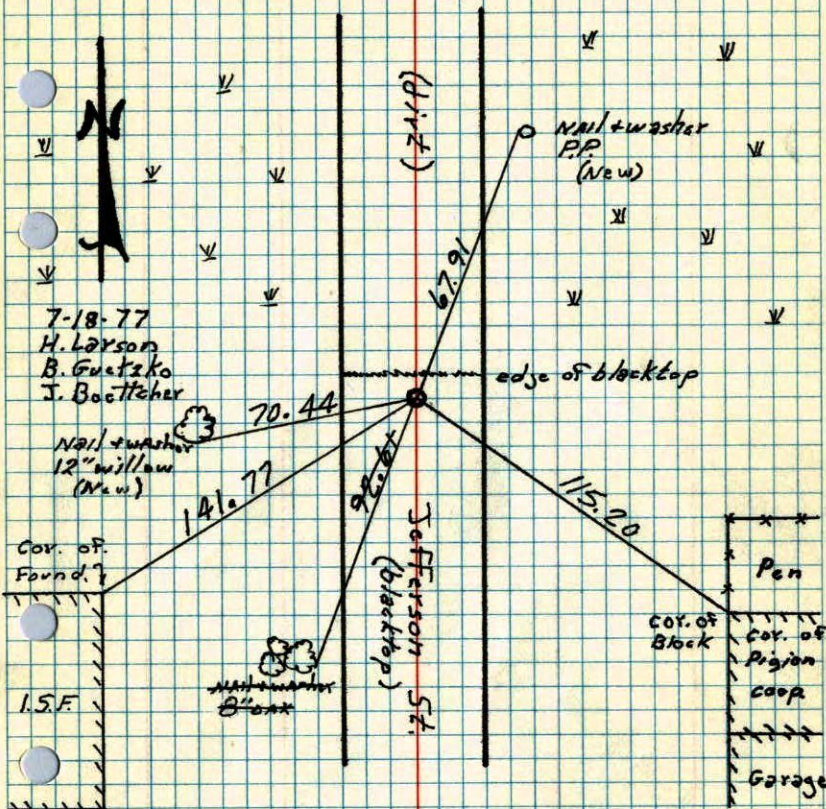
Retied Cast Iron Monument

NO. 446 TELEPHONE



# N<sup>1</sup>/<sub>4</sub> Cor. Sec. 6 T31 R23

Reset cast iron monument after  
Sewer Construction. C.I. Flush and  
on  $\phi$ .



RAISED  
1 SEP 77  
S. BRIEN  
J. STEPHENS

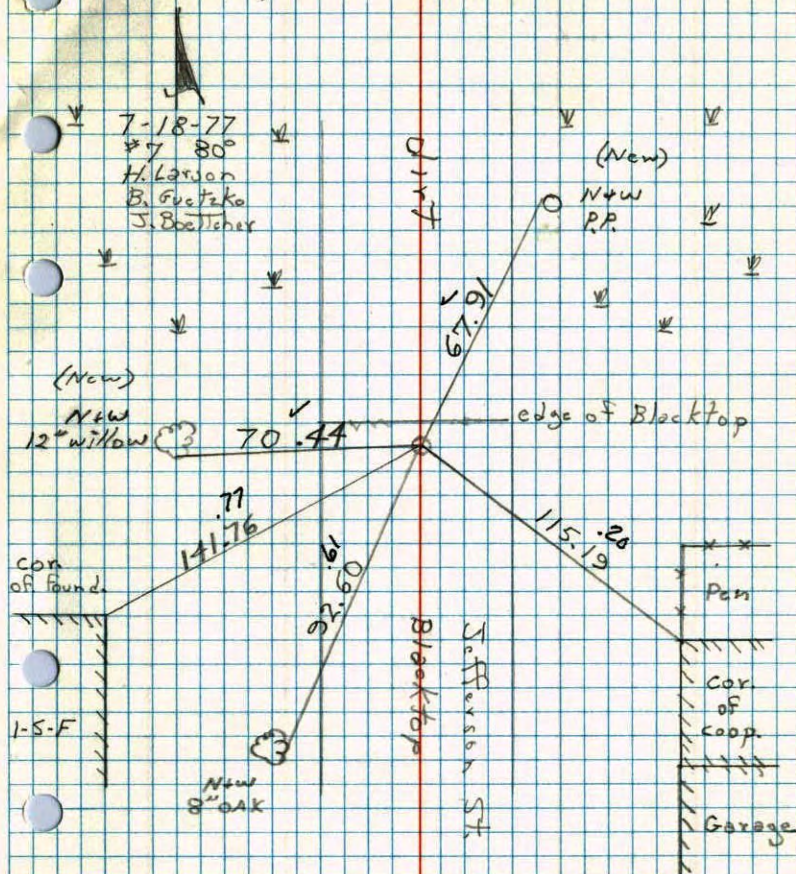
TIE CHECK  
6-3-80  
B. STEPHENS  
P. ROSS  
P. HORNBY

TEMPERATURE CORRECTED  
AND HORIZONTALLY  
TAPED MEASUREMENTS

ROLAND W. ANDERSON  
COUNTY SURVEYOR  
ANOKA COUNTY, MINNESOTA

# N<sup>1</sup>/<sub>4</sub> Cor. Sec. 6 T31 R23

Reset cast iron monument after  
sewer construction. cast iron Flush.



con  
of found.

I-S-F

New  
8" oak

Jefferson St  
Blacktop

Garage

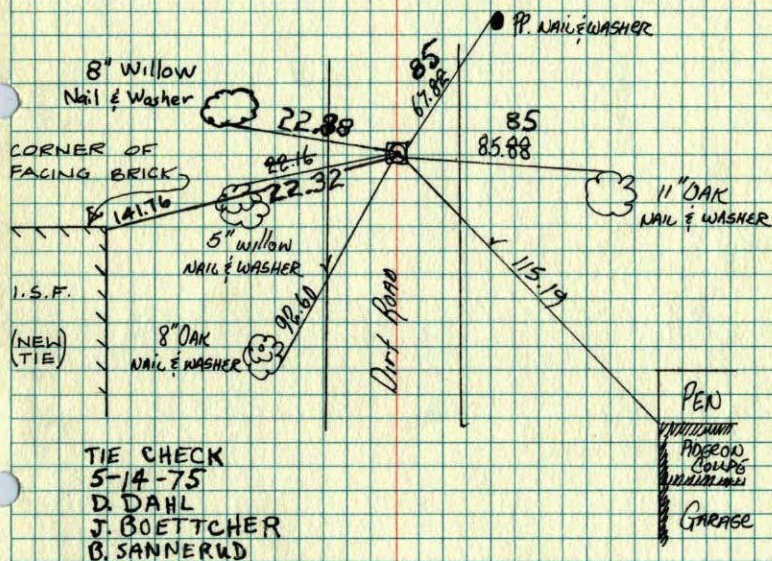
12  
 N $\frac{1}{4}$  Cor. Sec. 6 T. 31 R. 23

FOUND CAST IRON MONU. DOWN 0.5'±  
 @ DIRT ROAD

RAISED CAST IRON MONU.

SEPT. 20 1961  
 R. FREEMAN  
 M. ANDERSON

12-11-73  
 H. LARSON



TIE CHECK  
 5-14-75  
 D. DAHL  
 J. BOETTCHER  
 B. SANNEURD

ROLAND W. ANDERSON  
 COUNTY SURVEYOR  
 ANOKA COUNTY, MINNESOTA

TEMPERATURE CORRECTED  
 AND HORIZONTALLY  
 TAPED MEASUREMENTS

7  
 N $\frac{1}{4}$  Cor. Sec. 6-T31-R23

Found Cast Iron Monument down  $+5'±$  in  
 $+2'±$   
 centerline of dirt road.  
 $-5'±$

Raised  
 12-11-73  
 H. Larson

Sept. 20, 1961  
 R. Freeman  
 M. Anderson

Retie 6/15/64  
 M. D. Anderson  
 R. Carlson

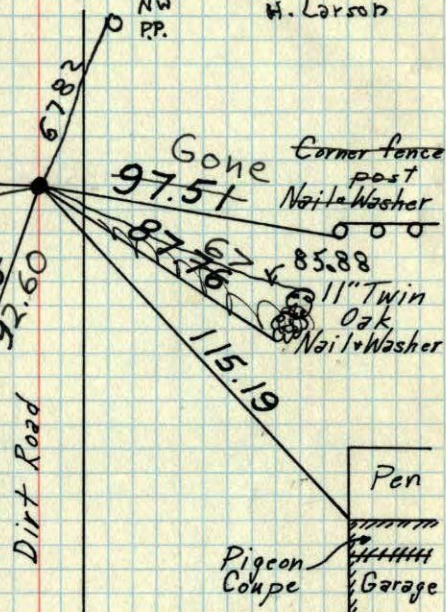
Gone

8" Willow  
 Nail + Washer  
 up 3.0'±  
 Wet  
 7/15/68

8" Oak  
 Nail + Washer

Tie Check  
 July 15, 1968  
 D. Powell  
 P. Pieh  
 R. Olson

TEMPERATURE CORRECTED  
 AND HORIZONTALLY  
 TAPED MEASUREMENTS



Tie Check  
 Aug. 30, 1971  
 B. Olson  
 J. Boettcher

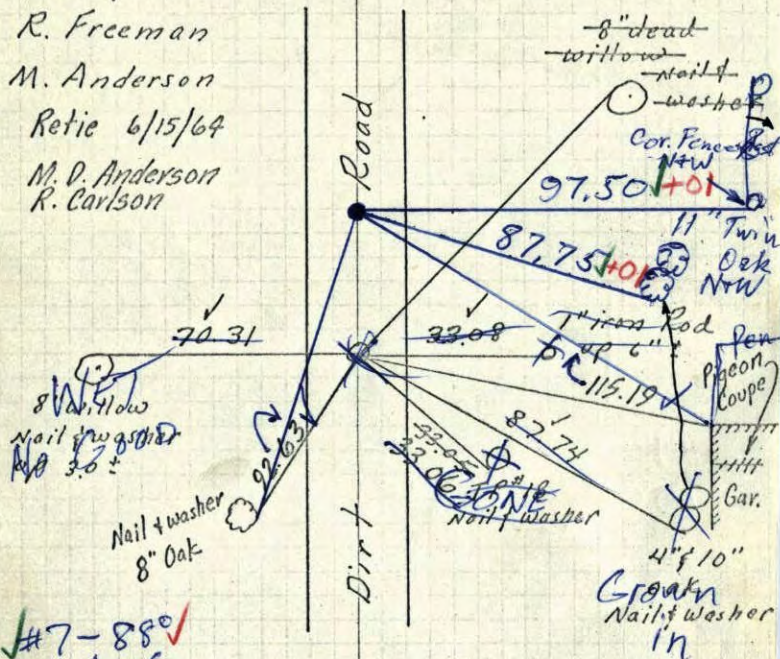
ROLAND W. ANDERSON  
 COUNTY SURVEYOR  
 ANOKA COUNTY, MINNESOTA

TEMPERATURE CORRECTED  
 AND HORIZONTALLY  
 TAPED MEASUREMENTS



7  
 N $\frac{1}{4}$  Cor. Sec 6-31-23 Blaine  
 Found Cast Iron Mon. down 1.5'±  
 in & dirt Road

20 Sept 1961  
 R. Freeman  
 M. Anderson  
 Retie 6/15/64  
 M. D. Anderson  
 R. Carlson



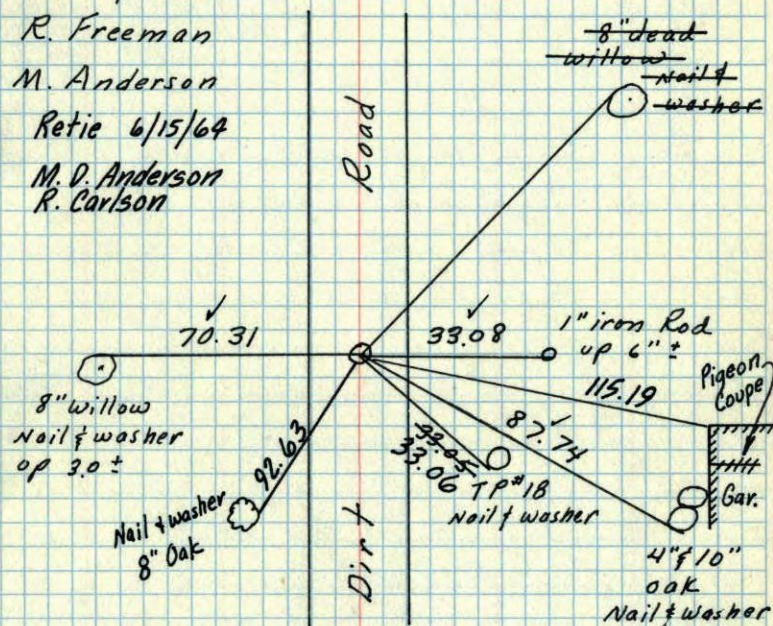
#7-880 ✓  
 7/15/68  
 D. Powell  
 P. Pich  
 R. Olson

TEMPERATURE CORRECTED  
 AND HORIZONTALLY  
 TAPED MEASUREMENTS

ROLAND W. ANDERSON  
 COUNTY SURVEYOR  
 ANOKA COUNTY, MINNESOTA

7  
 N $\frac{1}{4}$  Cor. Sec 6-31-23 Blaine  
 Found Cast Iron Mon. down 1.5'±  
 in & dirt Road

20 Sept 1961  
 R. Freeman  
 M. Anderson  
 Retie 6/15/64  
 M. D. Anderson  
 R. Carlson

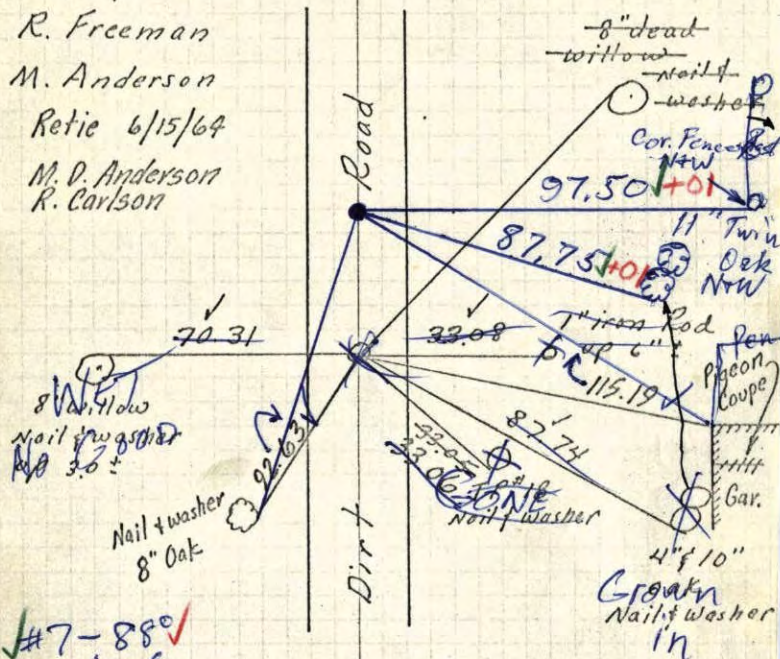


TEMPERATURE CORRECTED  
 AND HORIZONTALLY  
 TAPED MEASUREMENTS

ROLAND W. ANDERSON  
 COUNTY SURVEYOR  
 ANOKA COUNTY, MINNESOTA

7  
 N $\frac{1}{4}$  Cor. Sec 6-31-23 Blaine  
 Found Cast Iron Mon. down 1.5±'  
 in & dirt Road

20 Sept 1961  
 R. Freeman  
 M. Anderson  
 Retie 6/15/64  
 M. D. Anderson  
 R. Carlson



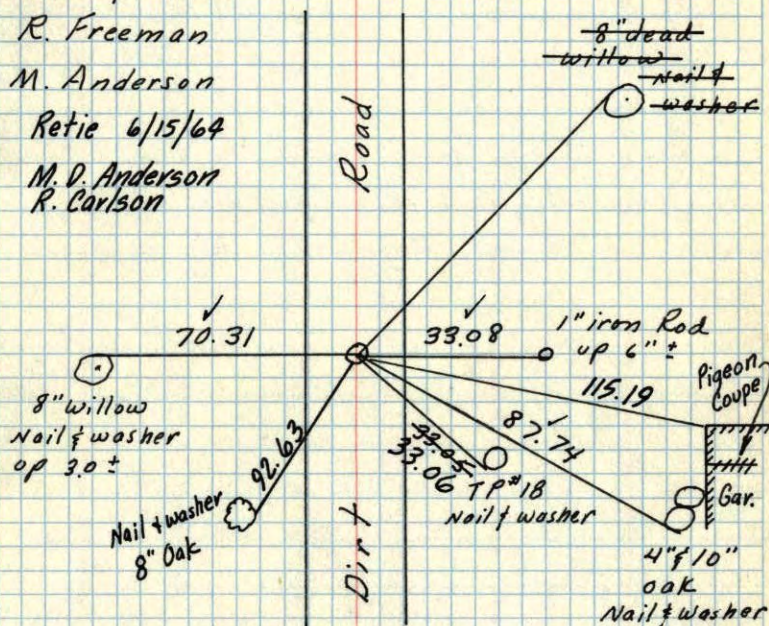
#7-880✓  
 7/15/68  
 D. Powell  
 P. Pich  
 R. Olson

TEMPERATURE CORRECTED  
 AND HORIZONTALLY  
 TAPED MEASUREMENTS

ROLAND W. ANDERSON  
 COUNTY SURVEYOR  
 ANOKA COUNTY, MINNESOTA

7  
 N $\frac{1}{4}$  Cor. Sec 6-31-23 Blaine  
 Found Cast Iron Mon. down 1.5±'  
 in & dirt Road

20 Sept 1961  
 R. Freeman  
 M. Anderson  
 Retie 6/15/64  
 M. D. Anderson  
 R. Carlson

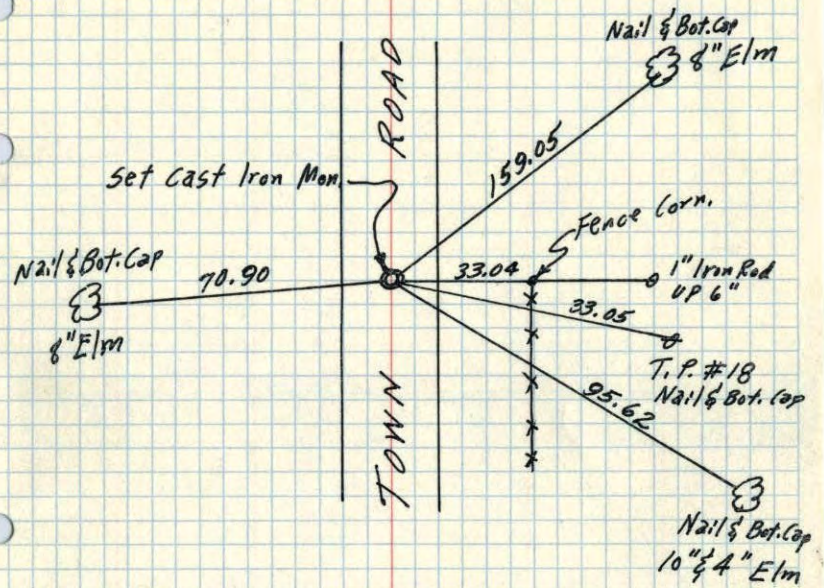


TEMPERATURE CORRECTED  
 AND HORIZONTALLY  
 TAPED MEASUREMENTS

ROLAND W. ANDERSON  
 COUNTY SURVEYOR  
 ANOKA COUNTY, MINNESOTA

N 1/4 Corn. Sec. 6, T 31, R 23

Found Concrete Mon. Broken off & Iron on N. Side bent. Base of Conc. Still inplace. Replaced with Cast Iron Monument. Down 0.35'



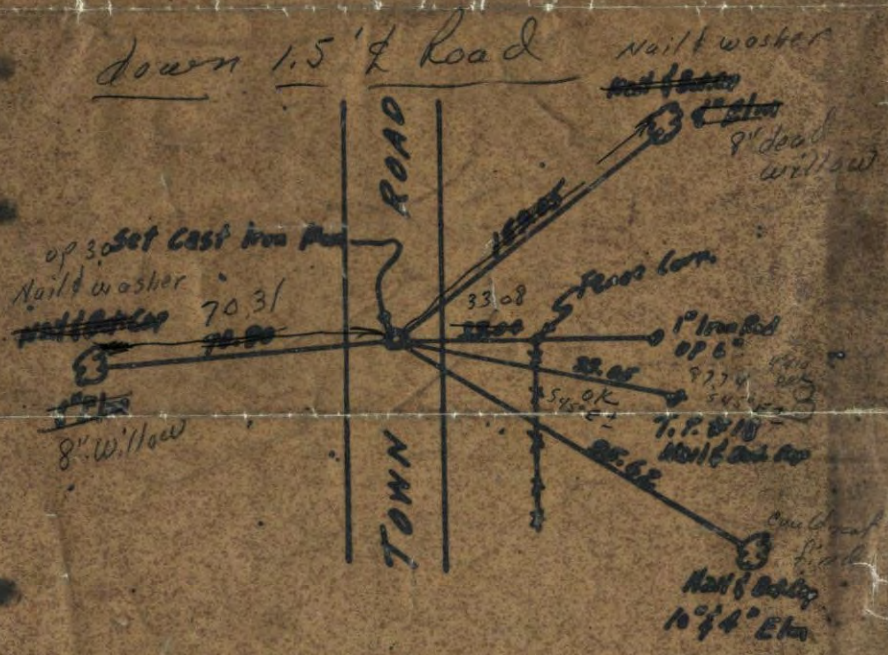
Also found & left 1" open iron pipe about 1 ft. N.E. of where broken off Conc. Mon. was found. Iron appears to be recently set.

Bill Rogers Assisting.  
Temp. 71° 4/14/59

ROLAND W. ANDERSON  
COUNTY SURVEYOR  
ANOKA COUNTY, MINNESOTA

N 1/4 Corn. Sec. 6, T 31, R 23

Found Concrete Mon. Broken off & Iron on N. Side bent. Base of Conc. Still inplace. Replaced with Cast Iron Monument. Down 1.5'



Also found & left 1" open iron pipe about 1 ft. N.E. of where broken off Conc. Mon. was found. Iron appears to be recently set.

Bill Rogers Assisting.  
Temp. 71° 4/14/59

ROLAND W. ANDERSON  
COUNTY SURVEYOR  
ANOKA COUNTY, MINNESOTA

*Down*