

CERTIFICATE OF LOCATION OF GOVERNMENT CORNER

County of Anoka State of Minnesota

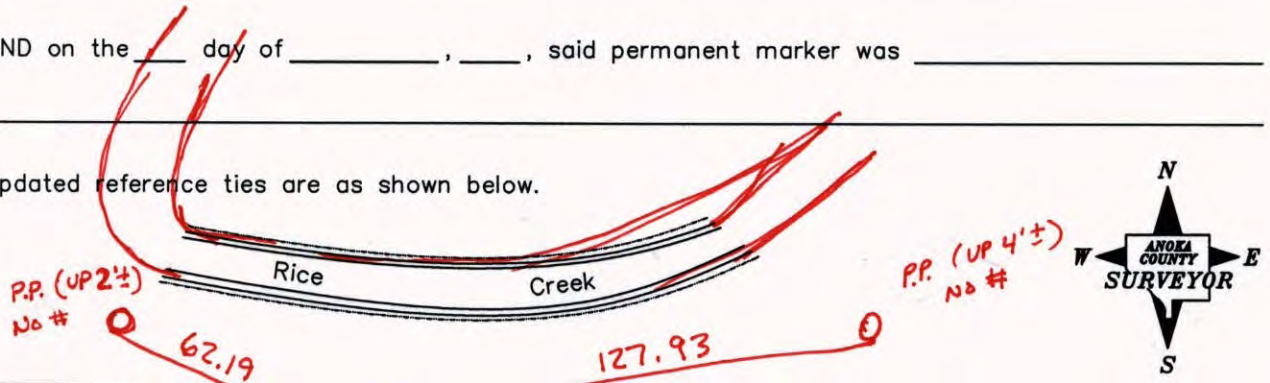
North 1/4 Corner of Sec. 3 Township 30 Range 23
(RAMSEY COUNTY MONUMENT)

On the 26th day of April, 1963, the described corner was evidenced by a granite monument

and to perpetuate the location of said corner, at the exact location thereof, a permanent marker was placed consisting of a cast iron monument

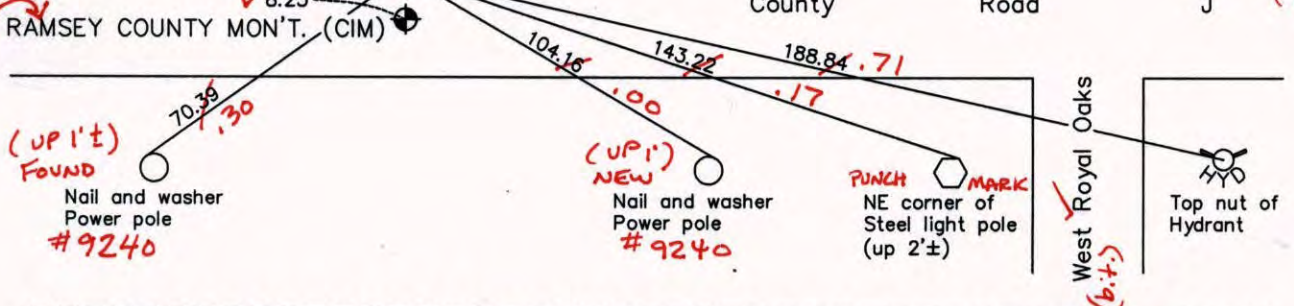
AND on the ___ day of _____, _____, said permanent marker was _____

Updated reference ties are as shown below.



CORRECTION MONUMENT (1995) County ✓ Road ✓ J (bit.) ✓

(ON E)



Reference Ties and Coordinates for 'RAMSEY COUNTY MONUMENT'

N.A.D. 1983 Coordinates (1996 Adjustment)	
County Project Coordinates	
Northing	<u>132449.9830</u>
Easting	<u>528014.4842</u>
Date	<u>10/20/98</u>

'CORRECTION MONUMENT (1995)'	
Revised date	N.A.D. 1983 Coordinates (1996 Adjustment)
7/25/90	County Project Coordinates
6/07/95	Northing <u>132458.3791</u>
10/19/98	Easting <u>528014.3947</u>
	Date <u>10/19/98</u>

I hereby certify that this United States public land survey monument record is correct and complete to the best of my knowledge and belief.

Date _____
_____, Anoka County Surveyor
Minnesota License Number _____

VRS < (1995) 3DQ = 0.05 N = 132458.4665 E = 528014.3344
(C.I.M.) 3DQ = 0.05 N = 132450.2636 E = 528014.4181

CERTIFICATE OF LOCATION OF GOVERNMENT CORNER

County of Anoka

State of Minnesota

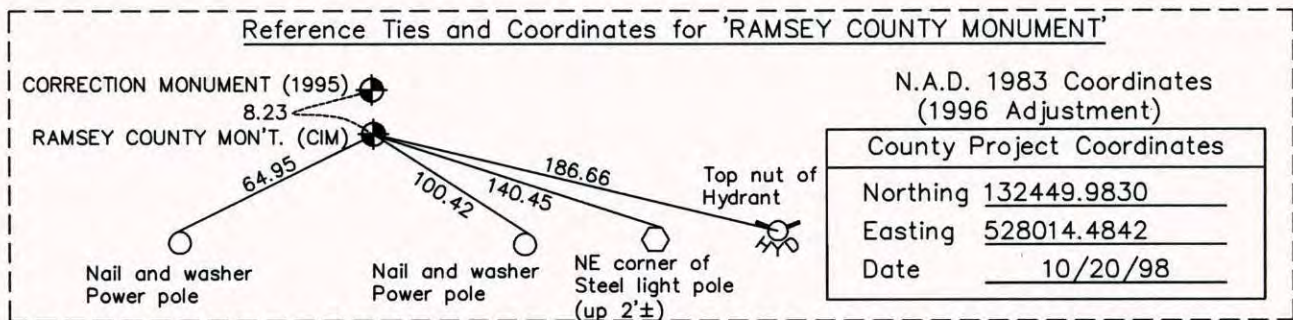
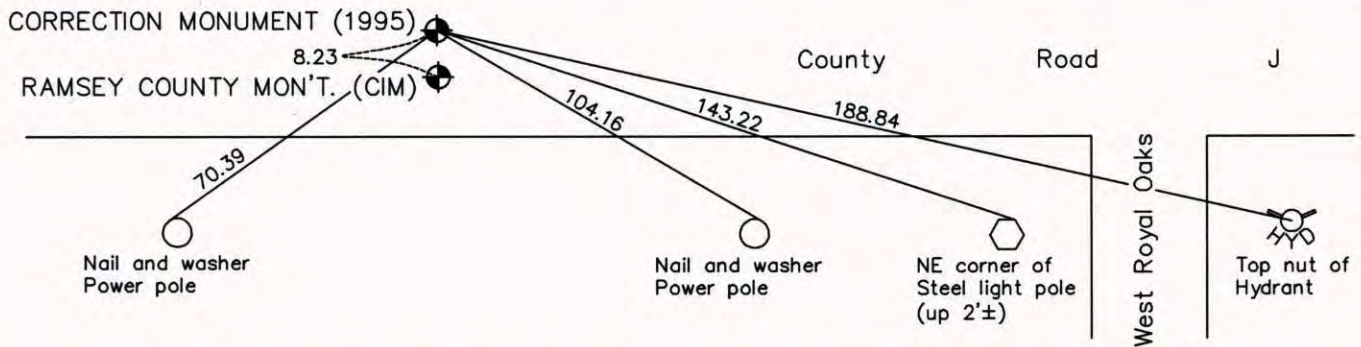
North 1/4 Corner of Sec. 3 Township 30 Range 23
(RAMSEY COUNTY MONUMENT)

On the 26th day of April, 1963, the described corner was evidenced by a granite monument

and to perpetuate the location of said corner, at the exact location thereof, a permanent marker was placed consisting of a cast iron monument

AND on the ___ day of _____, _____, said permanent marker was _____

Updated reference ties are as shown below.



'CORRECTION MONUMENT (1995)'

Revised date
7/25/90
6/07/95
10/19/98

N.A.D. 1983 Coordinates (1996 Adjustment)	
County Project Coordinates	
Northing	<u>132458.3791</u>
Easting	<u>528014.3947</u>
Date	<u>10/19/98</u>

I hereby certify that this United States public land survey monument record is correct and complete to the best of my knowledge and belief.

_____, Date _____

_____, Anoka County Surveyor

Minnesota License Number _____

CERTIFICATE OF LOCATION OF GOVERNMENT CORNER

County of Anoka

State of Minnesota

NORTH 1/4 Corner of Sec. 3 Township 30 Range 23

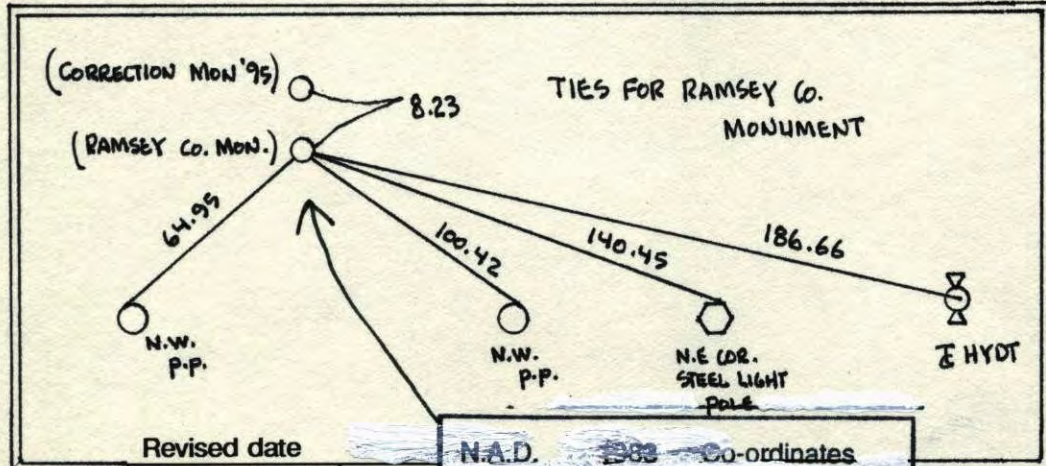
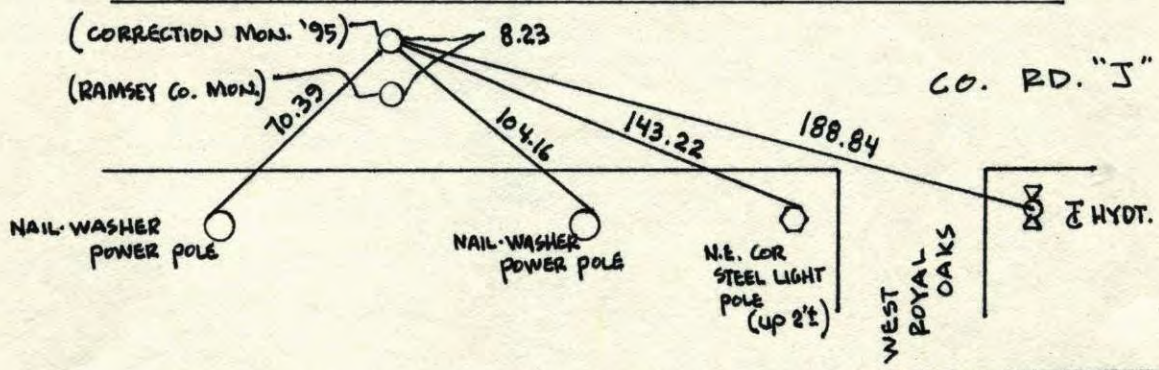
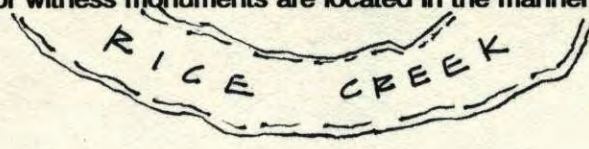
(RAMSEY Co.)

I hereby certify that on the 26TH day of APRIL, 19 63, I found the described corner which was

evidenced by GRANITE MONUMENT

and I further certify that to perpetuate the location of said corner, I did, at the exact location thereof, place a permanent marker consisting of CAST IRON MONUMENTS.

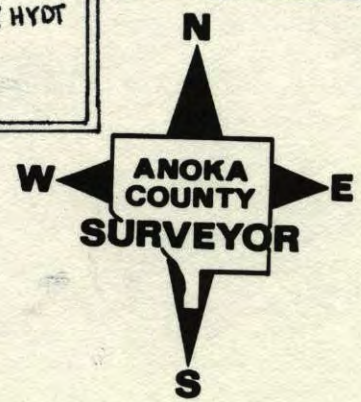
which reference or witness monuments are located in the manner following:



N.A.D.	1983	Co-ordinates
County	Project	Co-ordinates
Northing	<u>132458.3791</u>	
Easting	<u>528014.3947</u>	
State Plane	Co-ordinates	
Y	_____	
X	_____	
Date	<u>10/19/98</u>	

Revised date
<u>6-10-86</u>
<u>7-25-90</u>
<u>6-7-95</u>
<u>10-19-98</u>

N.A.D.	1983	Co-ordinates
County	Project	Co-ordinates
Northing	<u>132449.9320</u>	
Easting	<u>528014.4842</u>	
State Plane	Co-ordinates	
Y	_____	
X	_____	
Date	<u>10/20/98</u>	

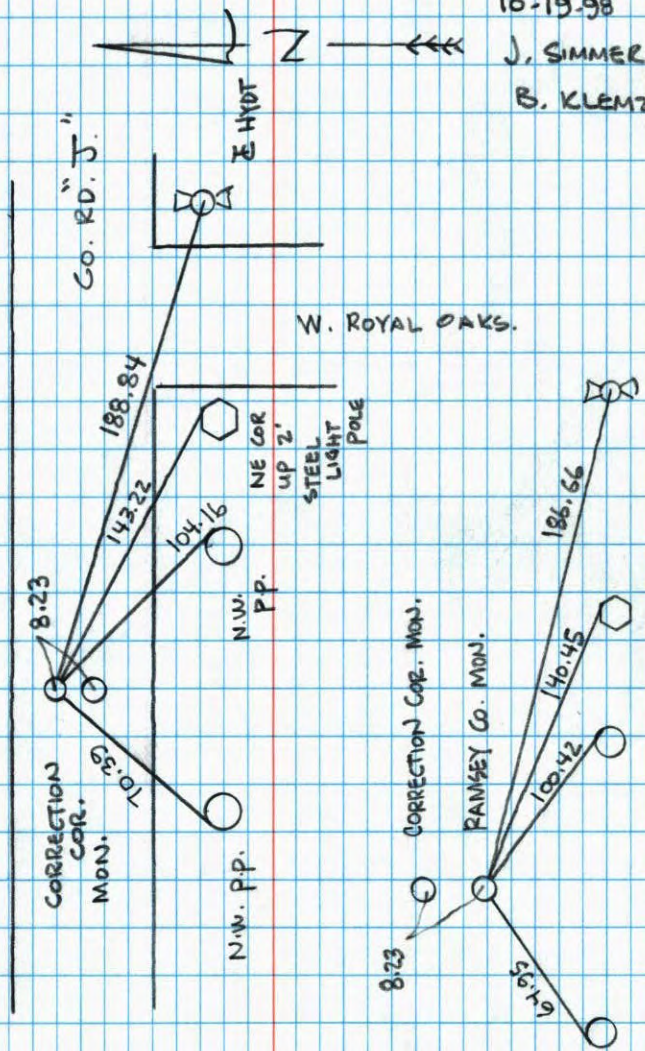


N 1/4 COR SEC 3 T 30 R 23 (RAMSEY CO)

RETIED RAMSEY & CORRECTION '95 MON'S.

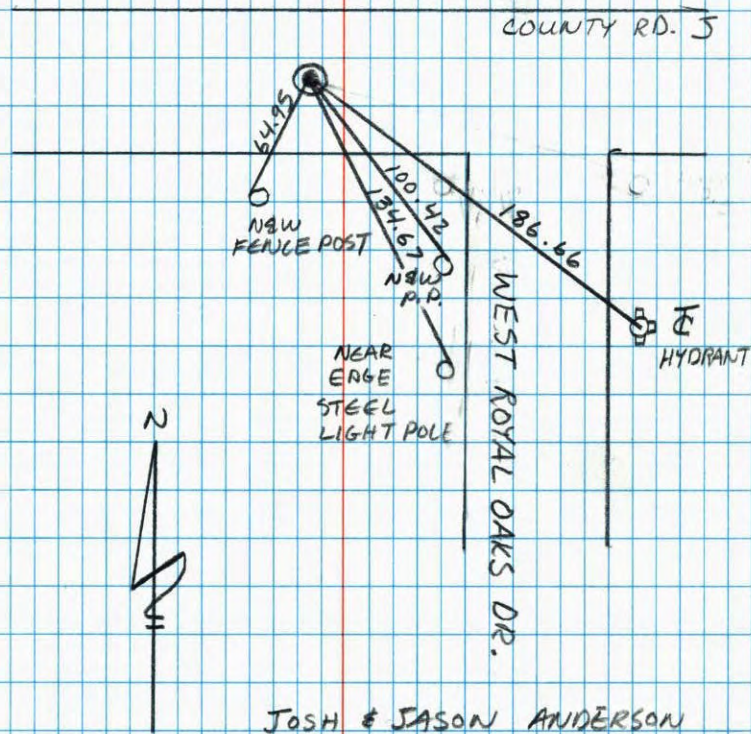
10-19-98

J. SIMMER
B. KLEMZ



N 1/4 Sec. 3 TW. 30 R. 23
(RAMSEY)

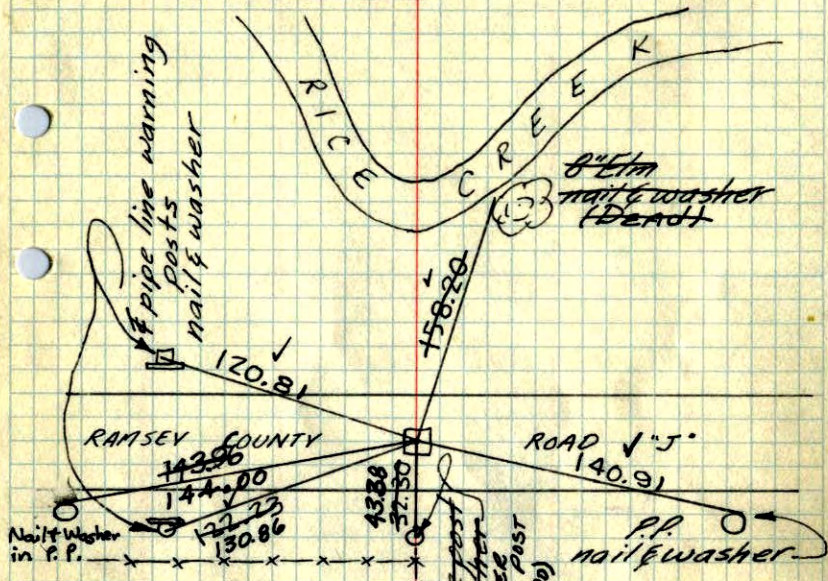
RAMSEY CO. CAST IRON RETIE



JOSH & JASON ANDERSON
6/7/95

N¹/₄ Cor. Sec. 3-T30-R23

Found 8"x8" Granite Monument with
drill hole in center
3/4" Iron Pipe flush.



April 26, 1963

J. Oliver
M.D. Anderson

Retie 9/17/64

M.D. Anderson
G. Todd

TEMPERATURE CORRECTED
AND HORIZONTALLY
TAPED MEASUREMENTS

Tie Check

5-27-75

D. Dahl

B. Sannerud

TIE CHECK

12 AUG 77

R. SANNERUD

S. BRIEN

J. STEPHENS

Tie Check

July 31, 1968

D. Powell

P. Pich

R. Olson

10-5-71

H. Larson

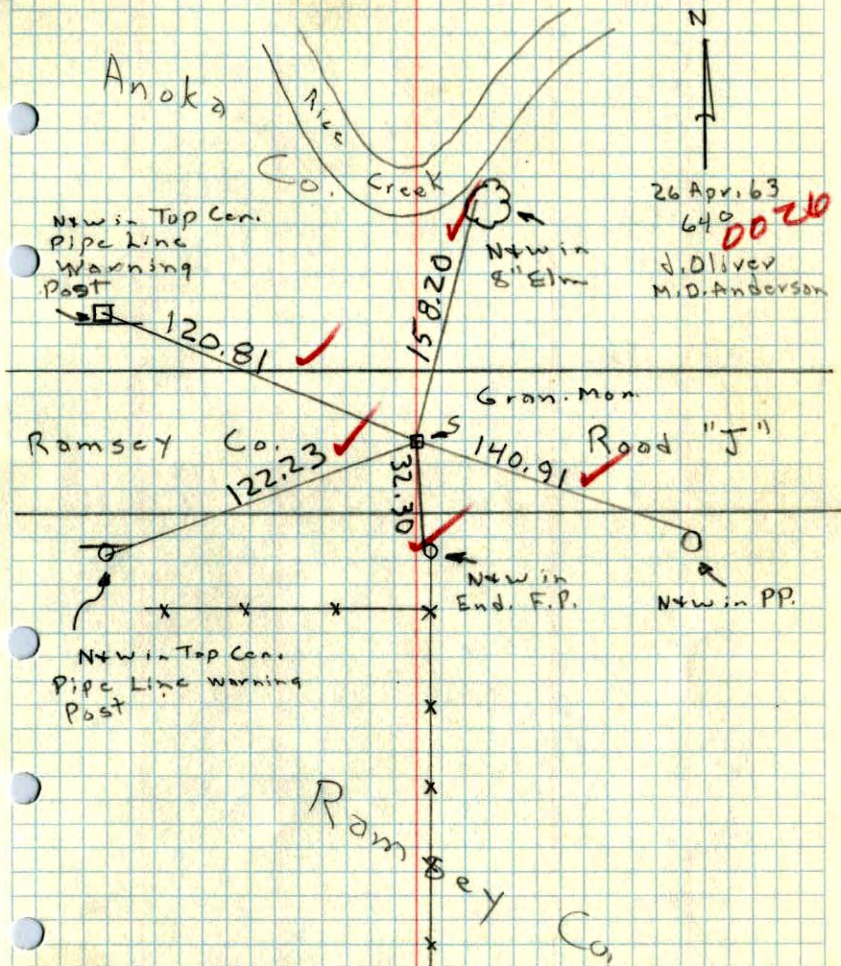
F. Waks

M. Jensen

ROLAND W. ANDERSON
COUNTY SURVEYOR
ANOKA COUNTY, MINNESOTA

N¹/₄ Cor. Sec. 3, T30, R23 (Ramsey Co.)

Found 8" Sq. Granite Mon. with drill hole
in center (down 0.5')



26 April 63

640 0020

J. Oliver
M.D. Anderson

New in Top Con.

Pipe Line Warning

Post

Post

Post

Post

Post

Post

Post

Post

Post

Post

Post

Post

Post

Post

Post

Post

Post

Post

Post

Post

Post

Post

Post

Post

Post

Post

Post

Post

Post

Ramsey Co.