

CERTIFICATE OF LOCATION OF GOVERNMENT CORNER

County of Anoka

State of Minnesota

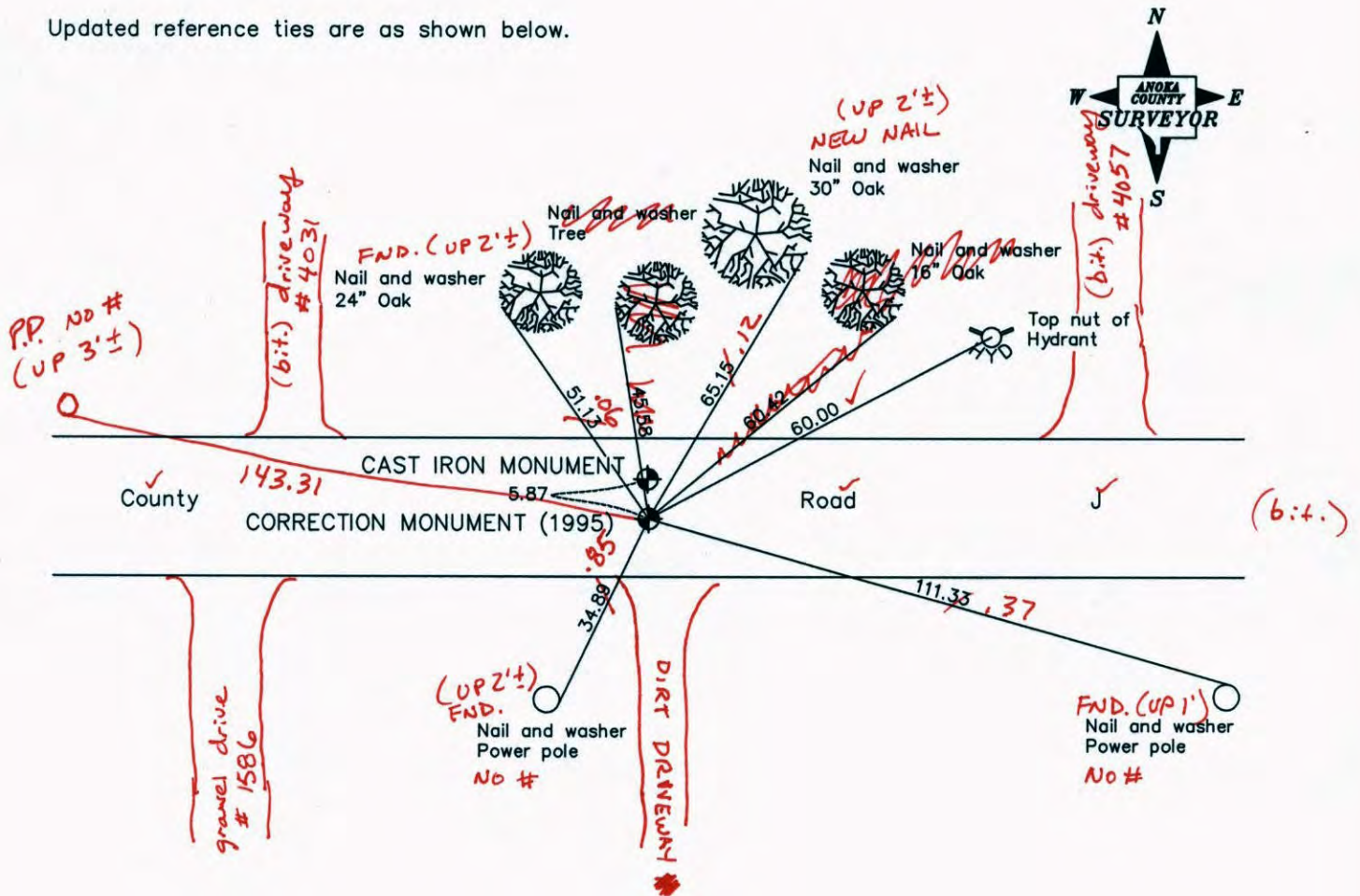
Northwest Corner of Sec. 3 Township 30 Range 23
(RAMSEY COUNTY MONUMENT)

On the 1st day of October, 1971, the described corner was evidenced by an 8" square granite monument

and to perpetuate the location of said corner, at the exact location thereof, a permanent marker was placed consisting of a cast iron monument (correction monument 1995)

AND on the ___ day of _____, _____, said permanent marker was _____

Updated reference ties are as shown below.



7-16-14
BK-55
TOTAL
3
VRS

Revised date
7/25/90
6/27/95
8/03/99

'CORRECTION MONUMENT (1995)'	
N.A.D. 1983 Coordinates (1996 Adjustment)	
County Project Coordinates	
Northing	<u>132471.9006</u>
Easting	<u>525375.4397</u>
Date	<u>8/03/99</u>

I hereby certify that this United States public land survey monument record is correct and complete to the best of my knowledge and belief.

_____, Date _____
_____, Anoka County Surveyor
Minnesota License Number _____

3DQ = 0.06 N = 132471.8310 E = 525375.3313

CERTIFICATE OF LOCATION OF GOVERNMENT CORNER

County of Anoka

State of Minnesota

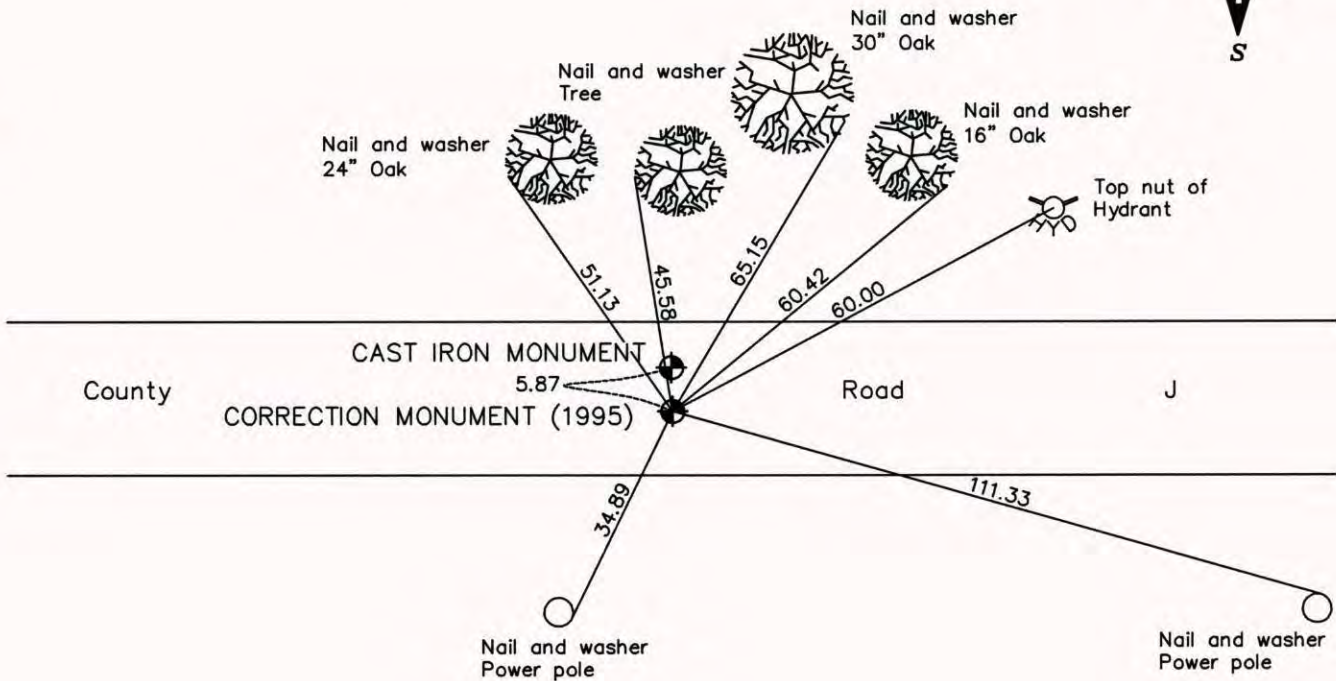
Northwest Corner of Sec. 3 Township 30 Range 23
(RAMSEY COUNTY MONUMENT)

On the 1st day of October, 1971, the described corner was evidenced by an 8" square granite monument

and to perpetuate the location of said corner, at the exact location thereof, a permanent marker was placed consisting of a cast iron monument (correction monument 1995)

AND on the ___ day of _____, _____, said permanent marker was _____

Updated reference ties are as shown below.



'CORRECTION MONUMENT (1995)'

N.A.D. 1983 Coordinates
(1996 Adjustment)

County Project Coordinates

Northing 132471.9006
Easting 525375.4397
Date 8/03/99

Revised date

7/25/90
6/27/95
8/03/99

I hereby certify that this United States public land survey monument record is correct and complete to the best of my knowledge and belief.

_____, Date _____

_____, Anoka County Surveyor

Minnesota License Number _____

CERTIFICATE OF LOCATION OF GOVERNMENT CORNER

County of Anoka

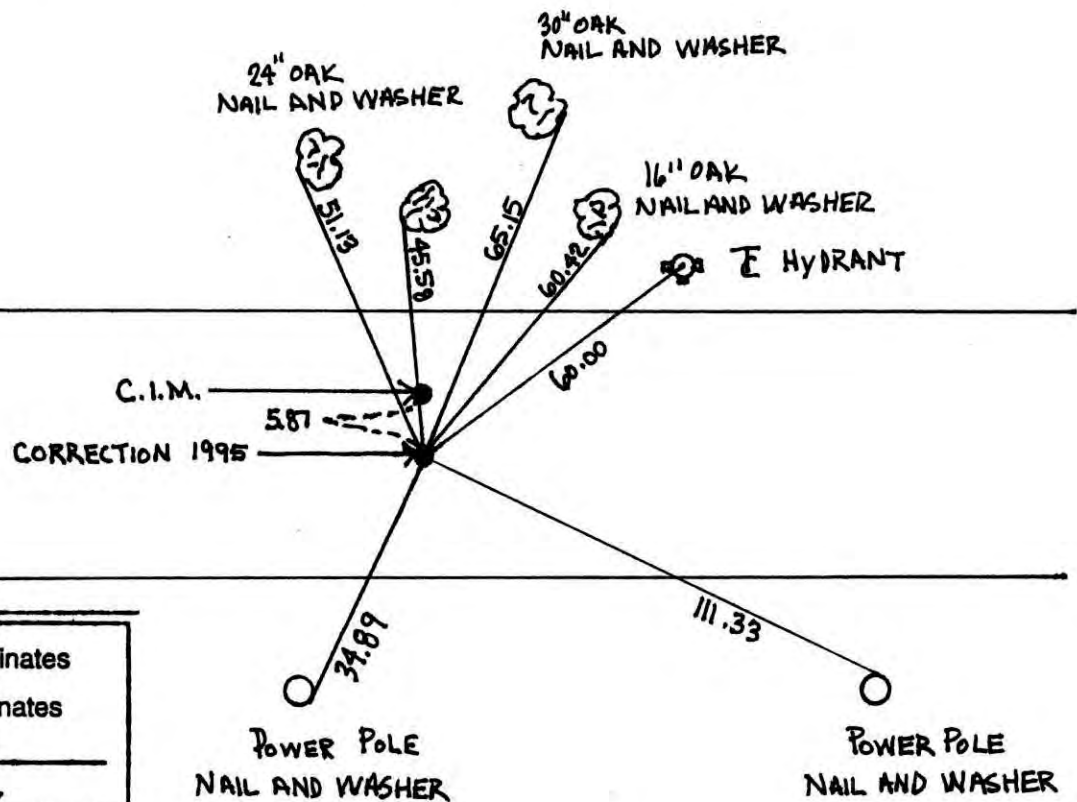
State of Minnesota

NORTHWEST Corner of Sec. 3 Township 30 Range 23

I hereby certify that on the 1 day of OCTOBER, 1971, I found the described corner which was evidenced by 8" SQ. GRANITE

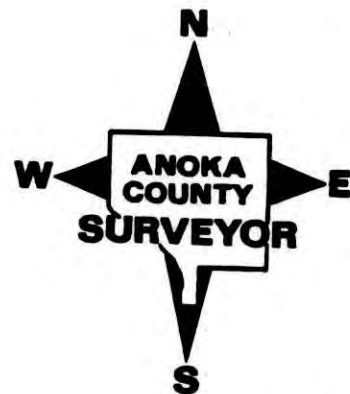
and I further certify that to perpetuate the location of said corner, I did, at the exact location thereof, place a permanent marker consisting of CAST IRON MONUMENT (CORRECTION MONUMENT)

which reference or witness monuments are located in the manner following:

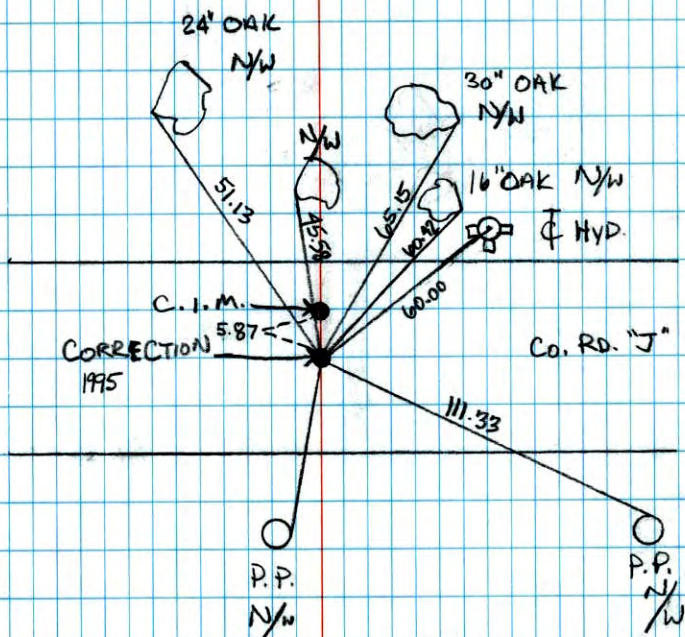


N.A.D.	1983	Co-ordinates
County	Project	Co-ordinates
Northing	<u>132471.9006</u>	
Easting	<u>525375.4397</u>	
State Plane Co-ordinates		
Y	_____	
X	_____	
Date	<u>8/03/99</u>	

Revised date	Revised date	Revised date
<u>6-2-86</u>		
<u>7-25-90</u>		
<u>6-27-95</u>		
<u>8-3-99</u>		



NORTHWEST COR. SEC 3, T. 30, R. 23
 RAMSEY CO. (CORRECTION) MONUMENT
 RETIED DURING GPS OF BLAINE



8-3-99

J. SIMMER

T. SCHWAB

NW Cor Sec 3 T30 R23

Found 8" Sq. Granite Mon. with drill
 hole in center (down 0.2)

CAST IRON MONUMENT FLOSH 2.5' NORTH OF
 CENTERLINE

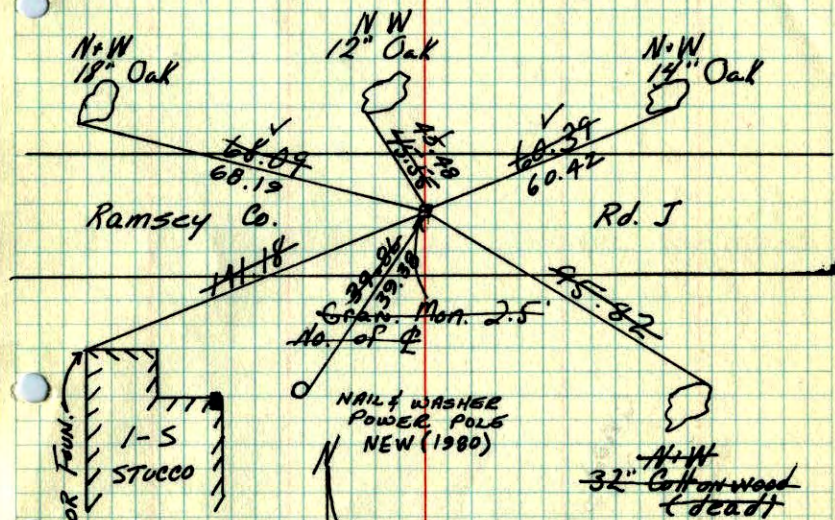
Tie Check

10-1-71

H. Larson

F. Waks

M. Jensen



Tie Check

5-27-75

D. Dahl

B. Sannerud

TIE CHECK

6-11-80

12 AUG 77

B. STEPHENS

R. SANNERUD

P. ROSS

S. BRIEN

P. HORNBY

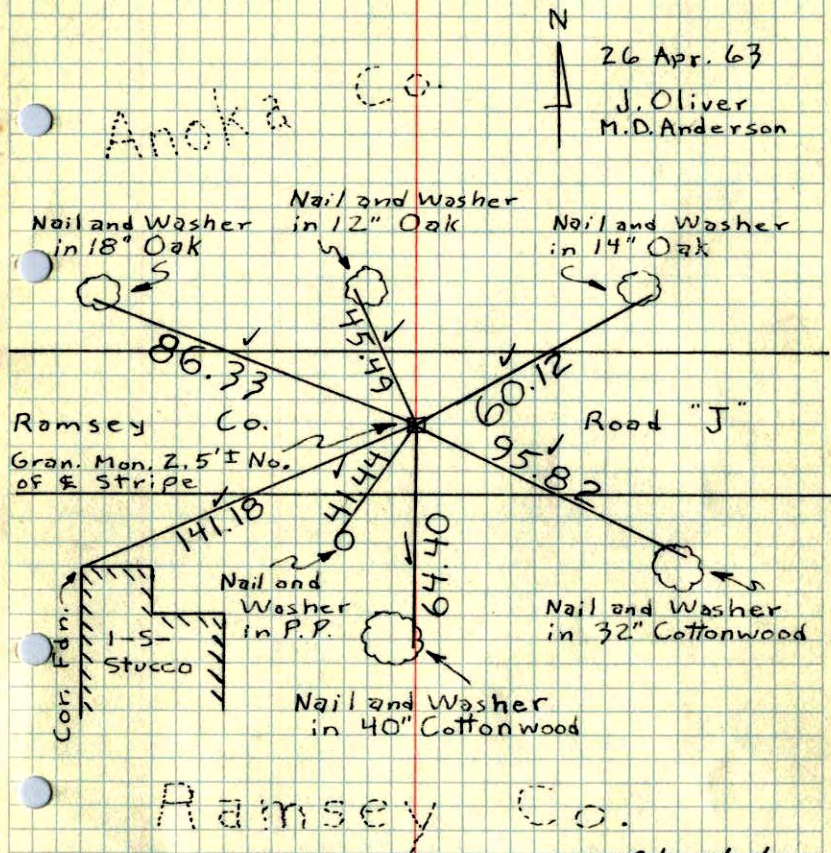
J. STEPHENS

TEMPERATURE CORRECTED AND HORIZONTALLY
 TAPED MEASUREMENTS

ROLAND W. ANDERSON
 COUNTY SURVEYOR
 ANOKA COUNTY, MINNESOTA

NW Cor. Sec. 3, T30, R23 (Ramsey Co.)

Found 8" Sq. Granite Monument with drill
hole in center (down 0.2')



TEMPERATURE CORRECTED
AND HORIZONTALLY
TAPED MEASUREMENTS

Retie 9/17/64

M.D. Anderson
& Todd

ROLAND W. ANDERSON
COUNTY SURVEYOR
ANOKA COUNTY, MINNESOTA

Between SE & So 1/4 35, 31, 23

NW Cor. Sec. 3, T30, R23 (Ramsey Co.)

Found 8" Sq. Granite Mon. with drill hole
in center (down 0.2')

