

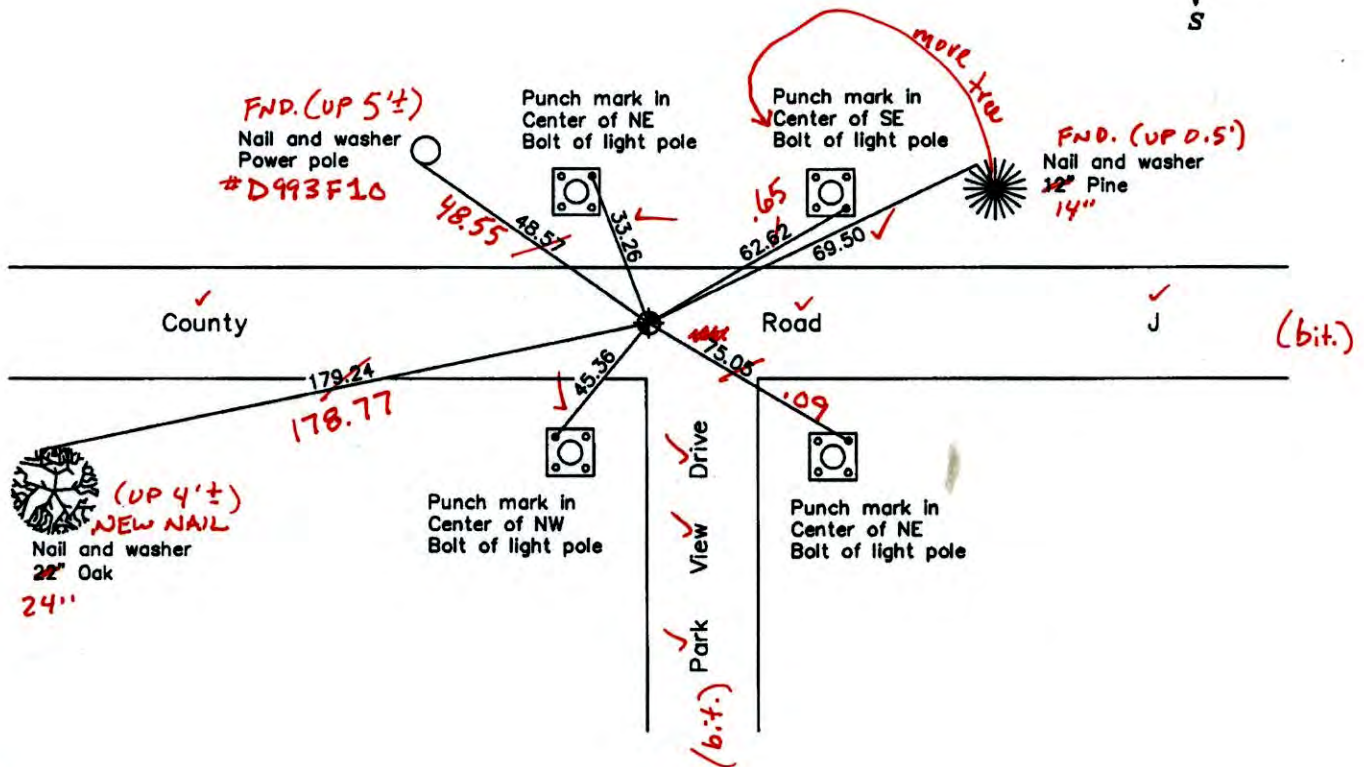
CERTIFICATE OF LOCATION OF GOVERNMENT CORNER
 County of Anoka State of Minnesota
 South 1/4 Corner of Sec. 35 Township 31 Range 23

On the 12th day of June, 1964, the described corner was evidenced by a 3/4" iron pipe

and to perpetuate the location of said corner, at the exact location thereof, a permanent marker was placed consisting of a cast iron monument (ON E)

AND on the 14th day of June, 2006, said permanent marker was found and the ties were updated

Updated reference ties are as shown below.



7-16-14
 BK-SS
 TOTAL
 VRS

Revised date
6/27/95
7/27/99
6/14/06

N.A.D. 1983 Coordinates (1996 Adjustment)	
County Project Coordinates	
Northing	132479.6944
Easting	523926.5960
Date	7/27/99

I hereby certify that this United States public land survey monument record is correct and complete to the best of my knowledge and belief.

Larry D. Holium Date 6/14/06
 Larry D. Holium, Anoka County Surveyor
 Minnesota License Number 18165

3DQ = 0.05 N = 132479.6772 E = 523926.5539

CERTIFICATE OF LOCATION OF GOVERNMENT CORNER

County of Anoka

State of Minnesota

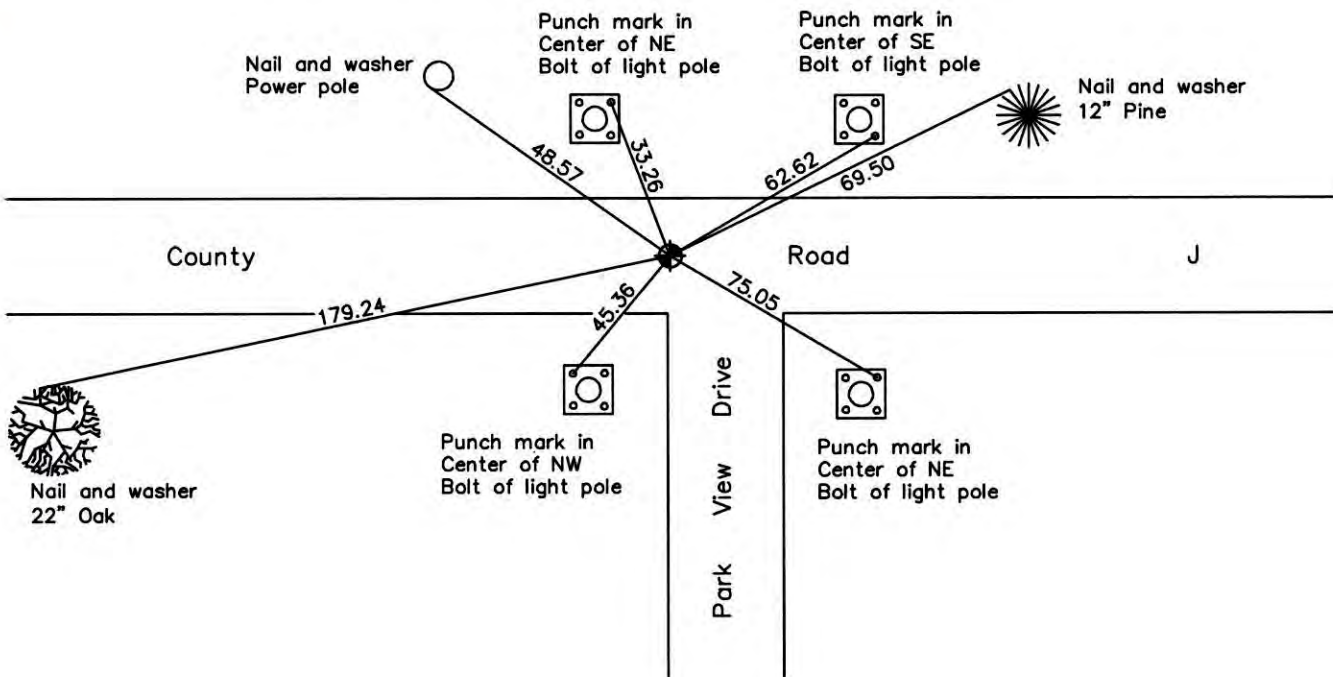
South 1/4 Corner of Sec. 35 Township 31 Range 23

On the 12th day of June, 1964, the described corner was evidenced by a 3/4 " iron pipe

and to perpetuate the location of said corner, at the exact location thereof, a permanent marker was placed consisting of a cast iron monument

AND on the 14th day of June, 2006, said permanent marker was found and the ties were updated

Updated reference ties are as shown below.



Revised date
6/27/95
7/27/99
6/14/06

N.A.D. 1983 Coordinates (1996 Adjustment)	
County Project Coordinates	
Northing	132479.6944
Easting	523926.5960
Date	7/27/99

I hereby certify that this United States public land survey monument record is correct and complete to the best of my knowledge and belief.

Larry D. Hoium Date 6/14/06

Larry D. Hoium, Anoka County Surveyor

Minnesota License Number 18165

CERTIFICATE OF LOCATION OF GOVERNMENT CORNER

County of Anoka

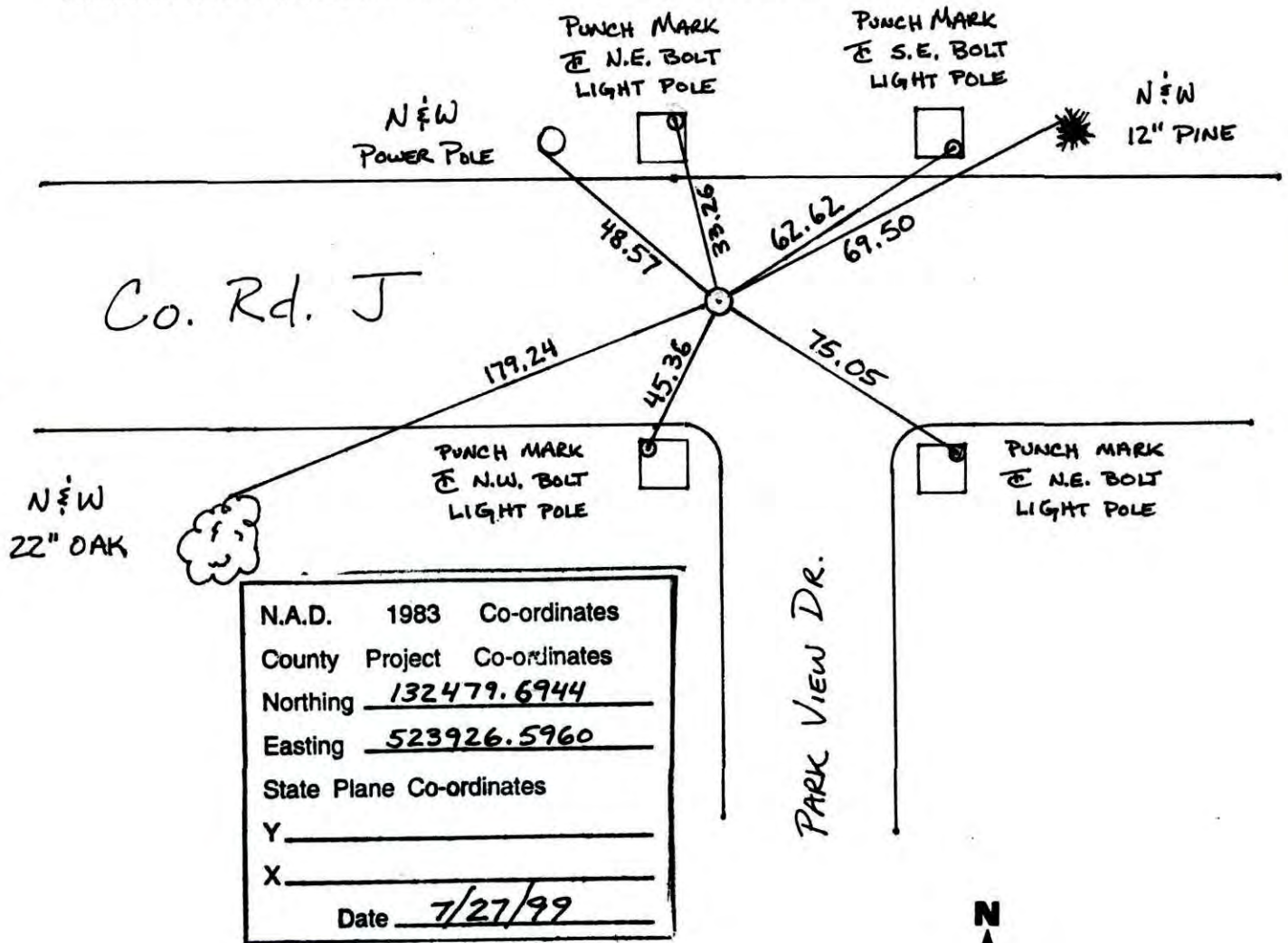
State of Minnesota

South $\frac{1}{4}$ Corner of Sec. 35 Township 31 Range 23

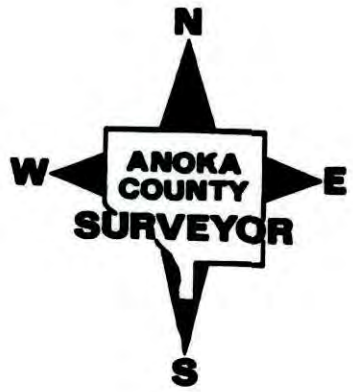
I hereby certify that on the 12 day of JUNE, 1964, I found the described corner which was evidenced by $\frac{3}{4}$ " IRON PIPE

and I further certify that to perpetuate the location of said corner, I did, at the exact location thereof, place a permanent marker consisting of CAST IRON MONUMENT

which reference or witness monuments are located in the manner following:



Revised date	Revised date	Revised date
6-2-86		
10-1-87		
8-1-90		
6-27-95		
7-27-99		
6-14-06		



CERTIFICATE OF LOCATION OF GOVERNMENT CORNER

County of Anoka

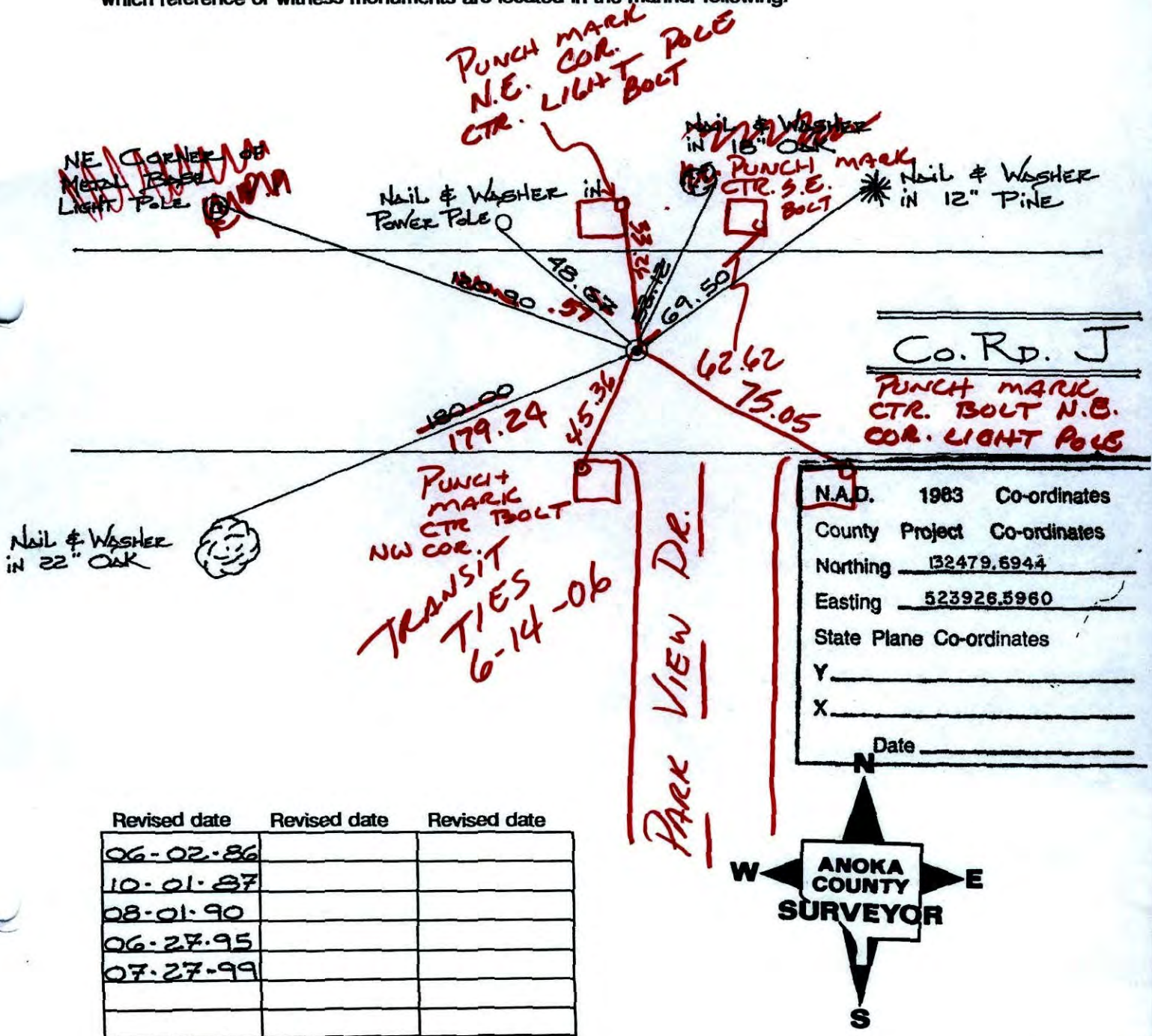
State of Minnesota

SOUTH 1/4 Corner of Sec. 35 Township 31 Range 23

I hereby certify that on the 2th day of JUNE, 1964, I found the described corner which was evidenced by 3/4" IRON PIPE

and I further certify that to perpetuate the location of said corner, I did, at the exact location thereof, place a permanent marker consisting of CAST IRON MONUMENT

which reference or witness monuments are located in the manner following:



CERTIFICATE OF LOCATION OF GOVERNMENT CORNER

County of Anoka

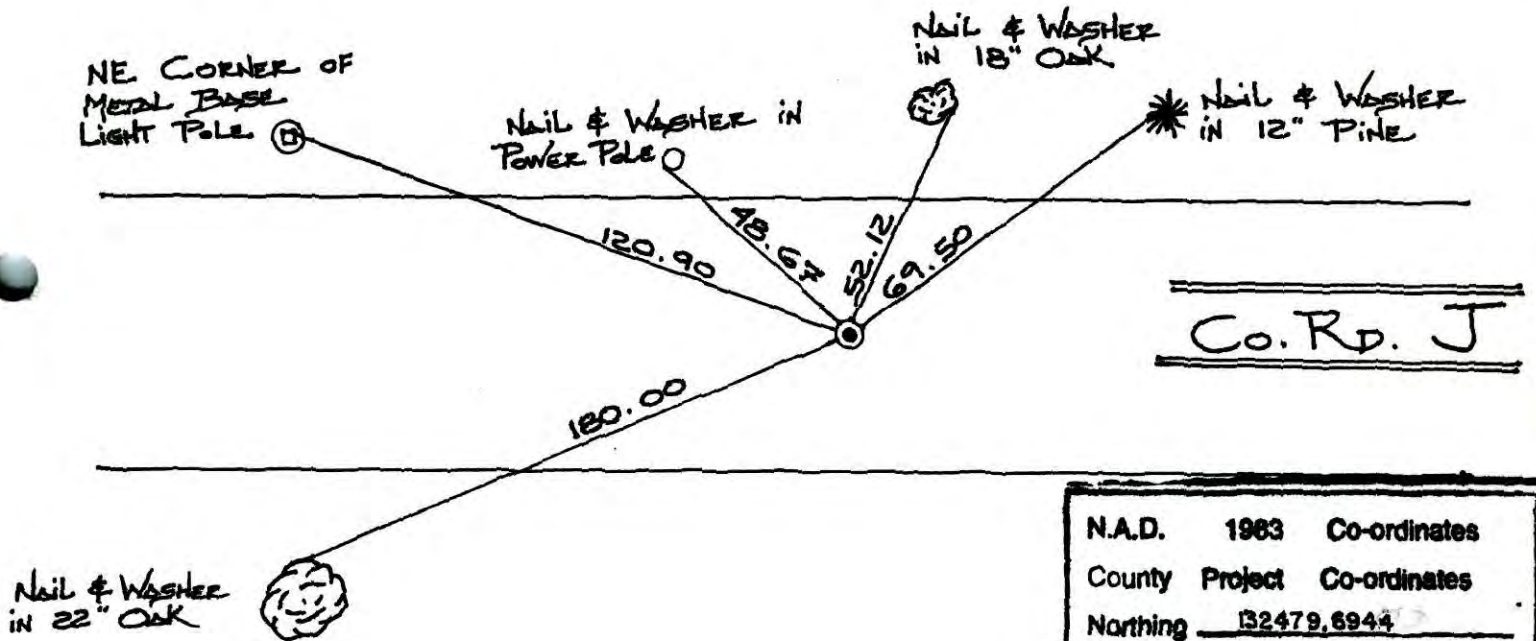
State of Minnesota

SOUTH 1/4 Corner of Sec. 35 Township 31 Range 23

I hereby certify that on the 12th day of JUNE, 1964, I found the described corner which was evidenced by 3/4" IRON PIPE

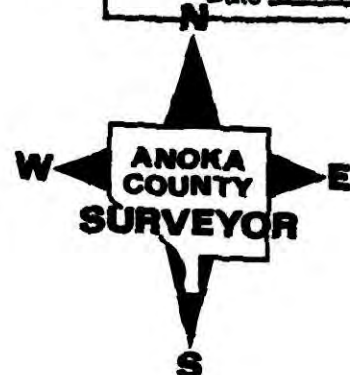
and I further certify that to perpetuate the location of said corner, I did, at the exact location thereof, place a permanent marker consisting of CAST IRON MONUMENT

which reference or witness monuments are located in the manner following:

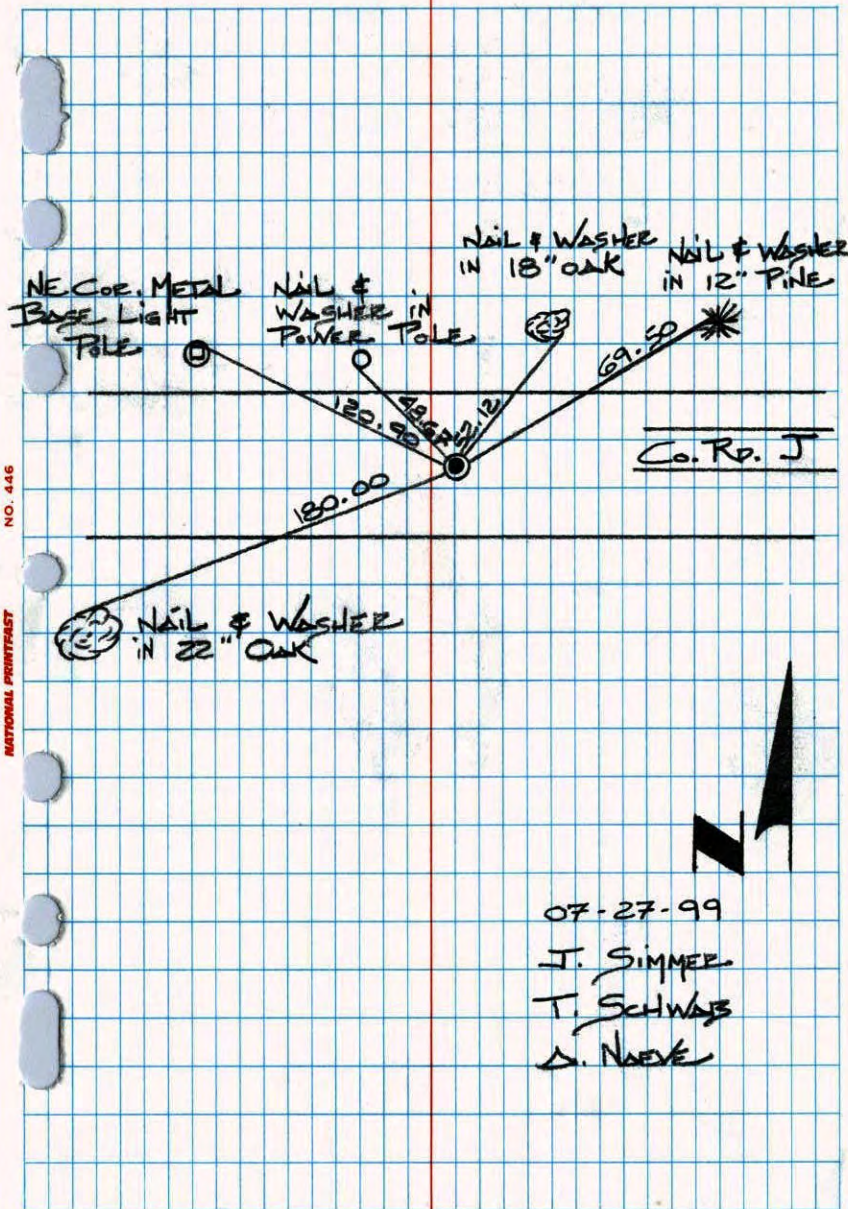


N.A.D.	1963	Co-ordinates
County	Project	Co-ordinates
Northing		<u>132479.6944</u>
Easting		<u>523926.5960</u>
State Plane Co-ordinates		
Y		_____
X		_____
Date _____		

Revised date	Revised date	Revised date
<u>06-02-86</u>		
<u>10-01-87</u>		
<u>08-01-90</u>		
<u>06-28-95</u>		
<u>07-27-99</u>		

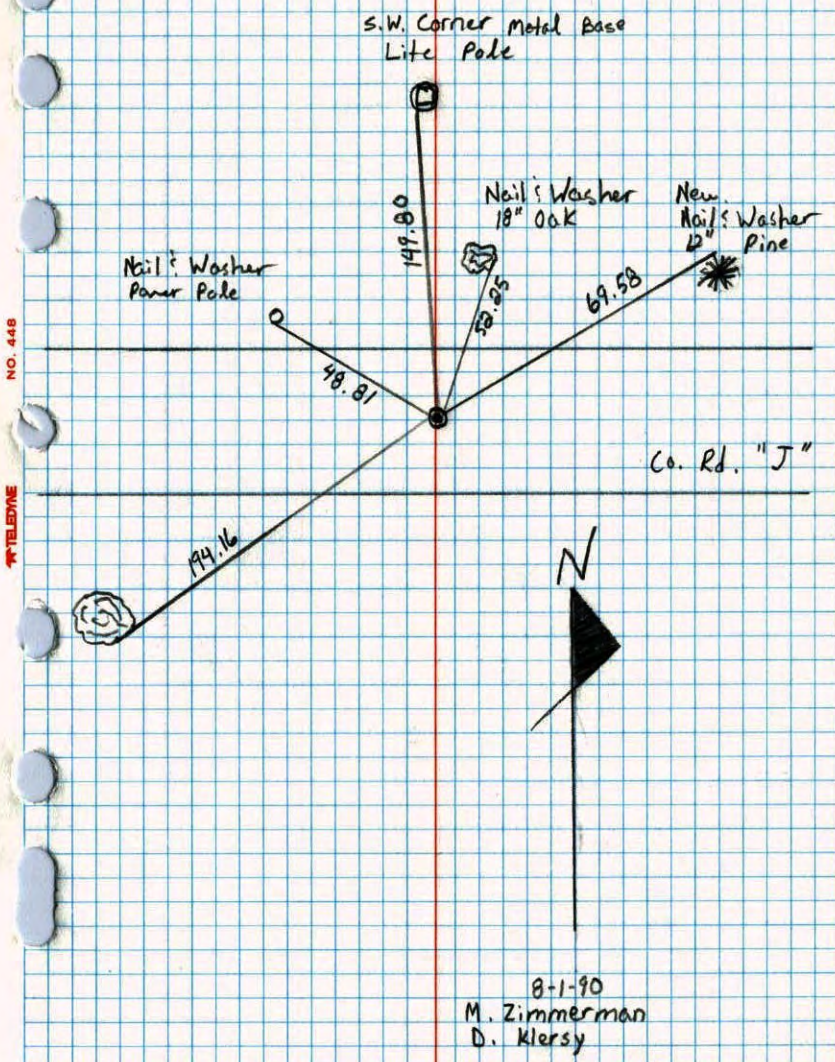


SOUTH 1/4 OF SEC. 35, T31, R23
 RETIRED C.I.M. (123)



07-27-99
 J. SIMMER
 T. SCHWAB
 A. NAEVE

South 1/4 Corner Sec. 35 T31 R23
 Retired Cast Iron Monument



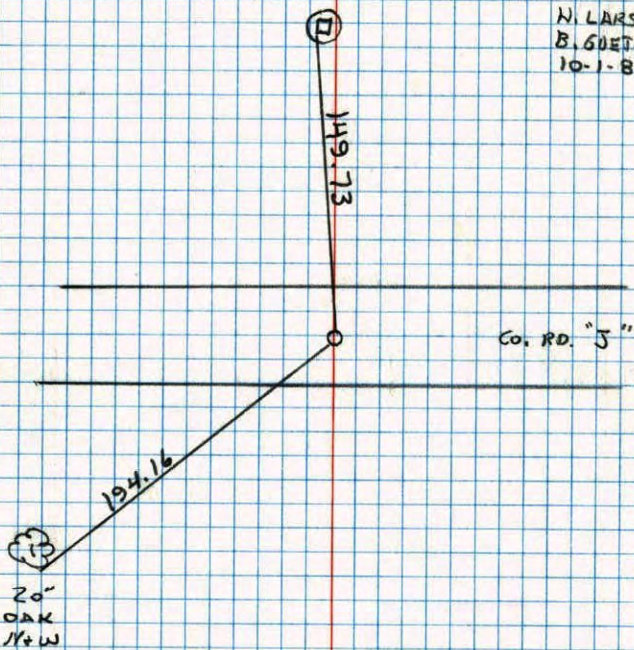
8-1-90
 M. Zimmerman
 D. Klersy

CONSTRUCTION TIE SET C.1. 123
7-25-88

SOUTH 1/4 SECTION 35 T31 R22
TIED AND REMOVED C.1. 23

SW COR. METAL BASE
LITE POLE

N. LARSON
B. GOETZKE
10-1-87



DRAWN 10-27-88

123

S 1/4 Cor. Sec. 35, T31, R22

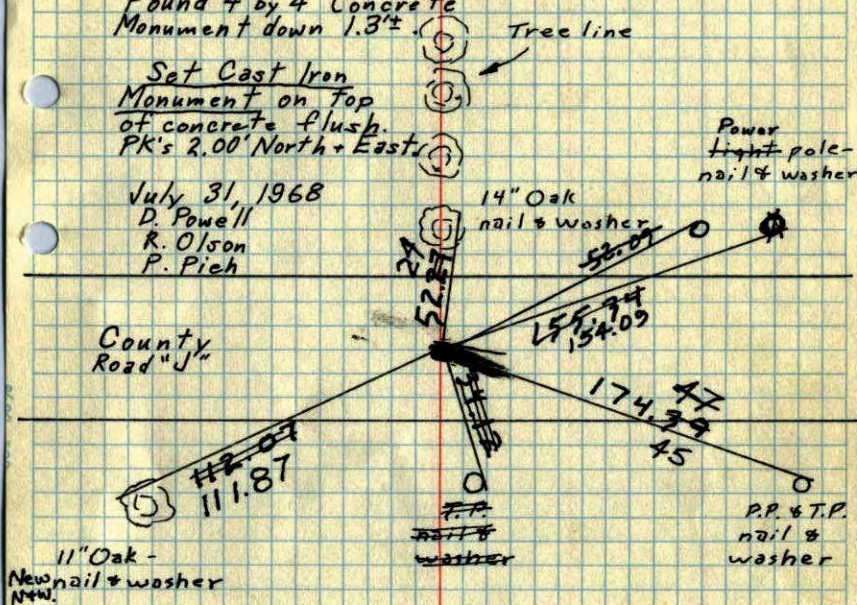
Found 3/4" Iron pipe flush with pavement set
by Carley Engineering.

Found 4" by 4" Concrete Monument down 1.3'±.

Set Cast Iron Monument on Top of concrete flush. PK's 2.00 North + East.

July 31, 1968
D. Powell
K. Olson
P. Pieh

County Road "J"



June 12, 1964
M. D. Anderson
R. Carlson

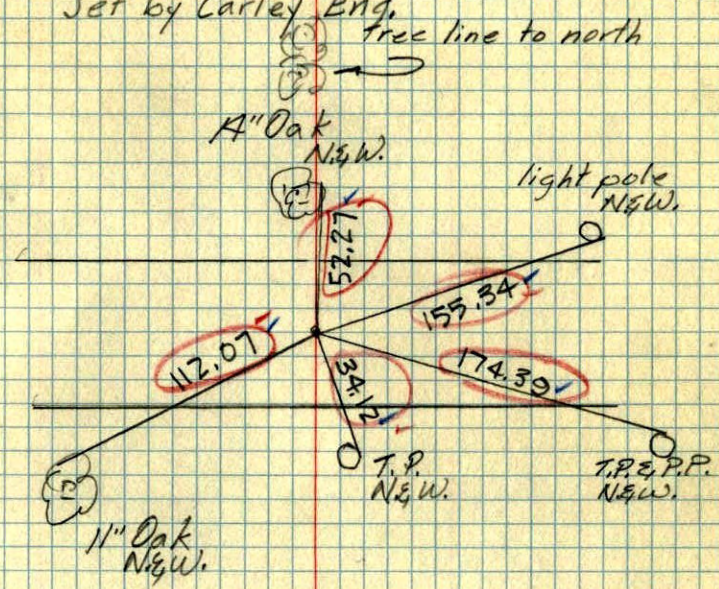
10-1-71
H. Larson
F. Waks
M. Jensen

Tie Check 5-27-75 D. Dahl B. Sannerud
TIE CHECK 6-11-80 B. STEPHENS P. ROSS P. HORNBY
TIE CHECK 12 AUG 77 P. SANNERUD S. BREN I. STEPHENS

TEMPERATURE CORRECTED AND HORIZONTALLY TAPED MEASUREMENTS
ROLAND W. ANDERSON
COUNTY SURVEYOR
ANOKA COUNTY, MINNESOTA

5
S. 1/4 Cor. Sec. 3~~5~~-T31-R23

found 3/4" iron pipe
flush with pavement
Set by Carley Eng.



June 12, 1964
M.D. Anderson
R. Carlson
Temp. 70°
Tape. #3