

CERTIFICATE OF LOCATION OF GOVERNMENT CORNER

County of Anoka State of Minnesota

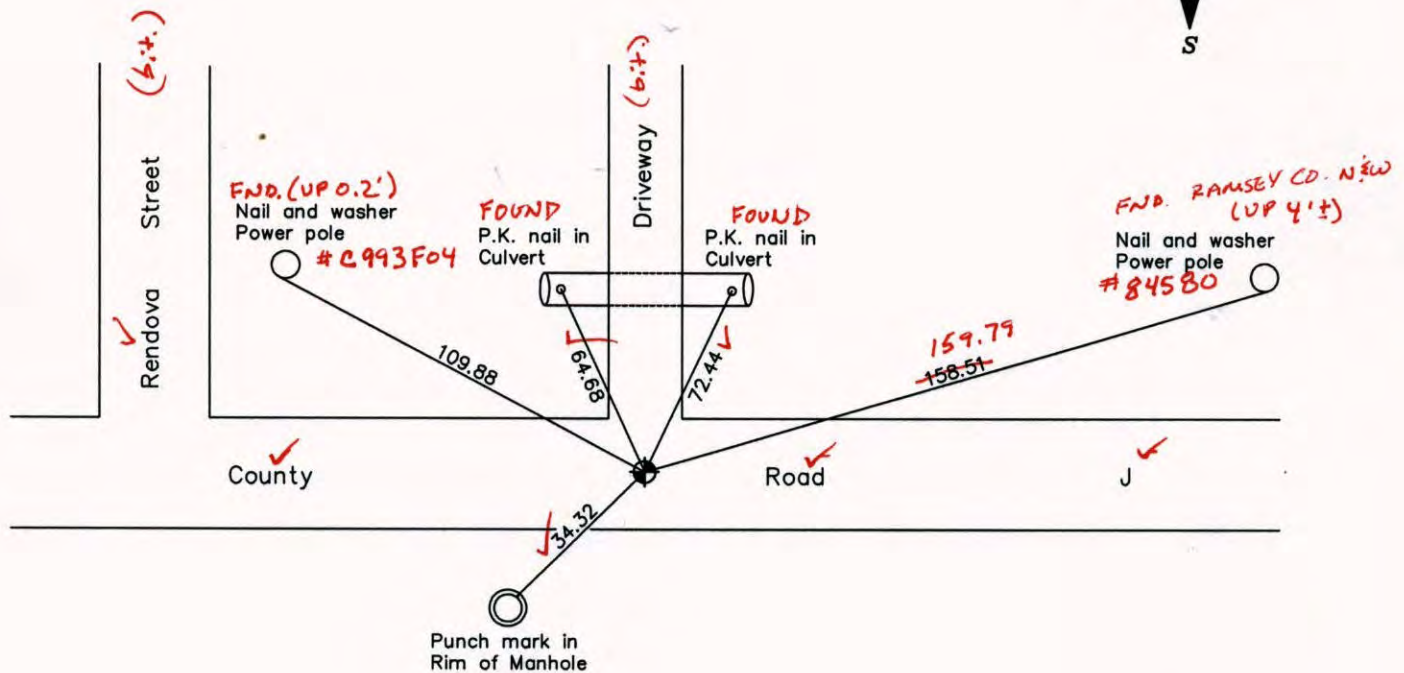
North 1/4 Corner of Sec. 4 Township 30 Range 23
 (RAMSEY COUNTY MONUMENT)

On the 24th day of October, 1964, the described corner was evidenced by a railroad spike

and to perpetuate the location of said corner, at the exact location thereof, a permanent marker was placed consisting of a cast iron monument (ON E)

AND on the ___ day of _____, _____, said permanent marker was _____

Updated reference ties are as shown below.



7-15-14
BK-SS
TOTAL
VRS

Revised date
7/27/90
6/27/95
8/03/99

N.A.D. 1983 Coordinates (1996 Adjustment)	
County Project Coordinates	
Northing	<u>132481.1738</u>
Easting	<u>522752.5991</u>
Date	<u>8/03/99</u>

I hereby certify that this United States public land survey monument record is correct and complete to the best of my knowledge and belief.

_____ Date _____

_____, Anoka County Surveyor

Minnesota License Number _____

3DQ = 0.04 N = 132481.2103 E = 522752.5579

CERTIFICATE OF LOCATION OF GOVERNMENT CORNER

County of Anoka

State of Minnesota

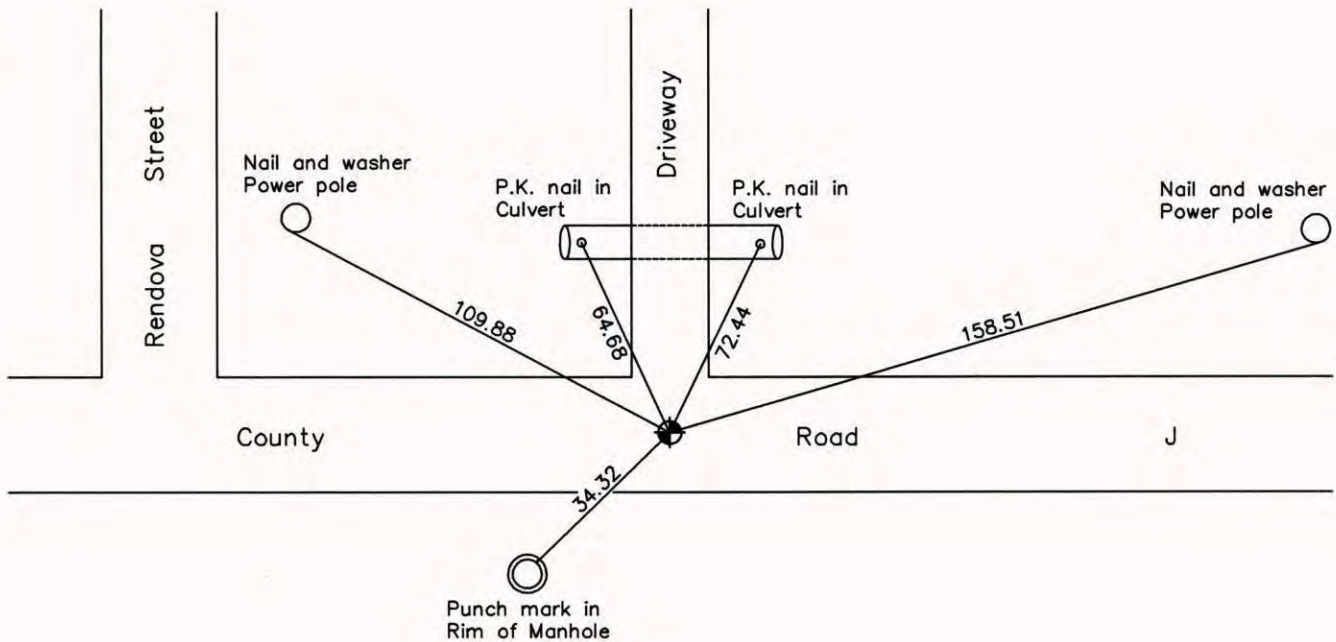
North 1/4 Corner of Sec. 4 Township 30 Range 23
 (RAMSEY COUNTY MONUMENT)

On the 24th day of October, 1964, the described corner was evidenced by a railroad spike

and to perpetuate the location of said corner, at the exact location thereof, a permanent marker was placed consisting of a cast iron monument

AND on the ___ day of _____, _____, said permanent marker was _____

Updated reference ties are as shown below.



Revised date
7/27/90
6/27/95
8/03/99

N.A.D. 1983 Coordinates (1996 Adjustment)	
County Project Coordinates	
Northing	132481.1738
Easting	522752.5991
Date	8/03/99

I hereby certify that this United States public land survey monument record is correct and complete to the best of my knowledge and belief.

_____, Date _____

_____, Anoka County Surveyor

Minnesota License Number _____

CERTIFICATE OF LOCATION OF GOVERNMENT CORNER

County of Anoka

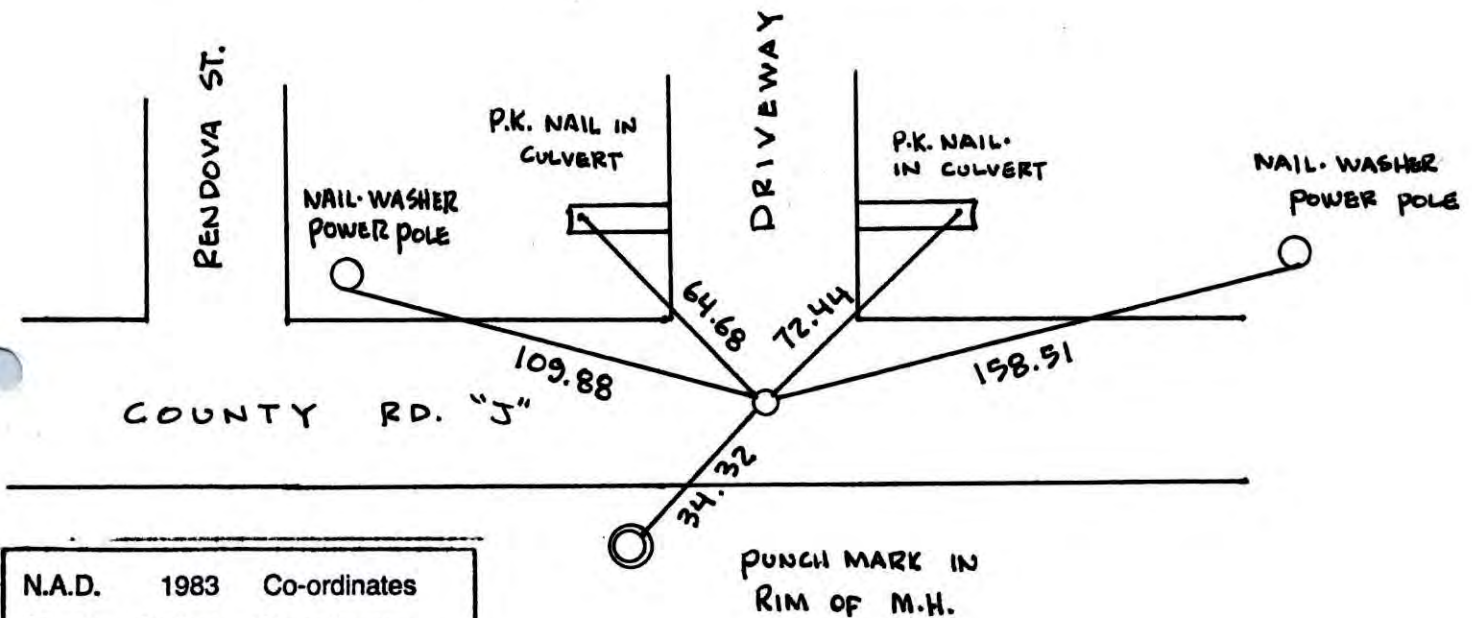
State of Minnesota

NORTH QTR. Corner of Sec. 4 Township 30 Range 23

I hereby certify that on the 24TH day of OCTOBER, 1964, I found the described corner which was evidenced by R.R. SPIKE

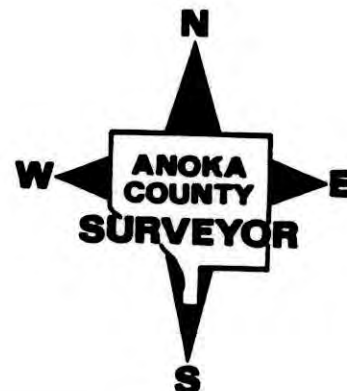
and I further certify that to perpetuate the location of said corner, I did, at the exact location thereof, place a permanent marker consisting of CAST IRON MONUMENT

which reference or witness monuments are located in the manner following:



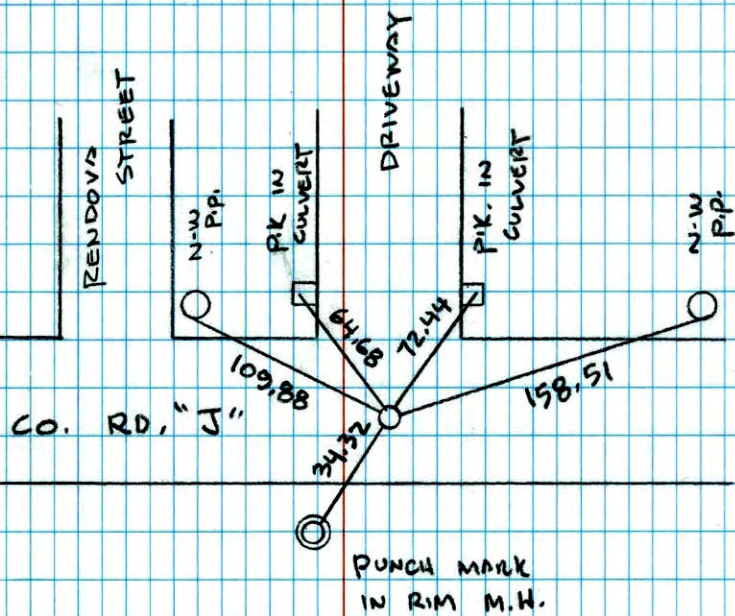
N.A.D.	1983	Co-ordinates
County	Project	Co-ordinates
Northing	<u>132481.1738</u>	
Easting	<u>522752.5991</u>	
State Plane	Co-ordinates	
Y	_____	
X	_____	
Date	<u>8/03/99</u>	

Revised date	Revised date	Revised date
<u>7-27-90</u>		
<u>6-27-95</u>		
<u>8-3-99</u>		



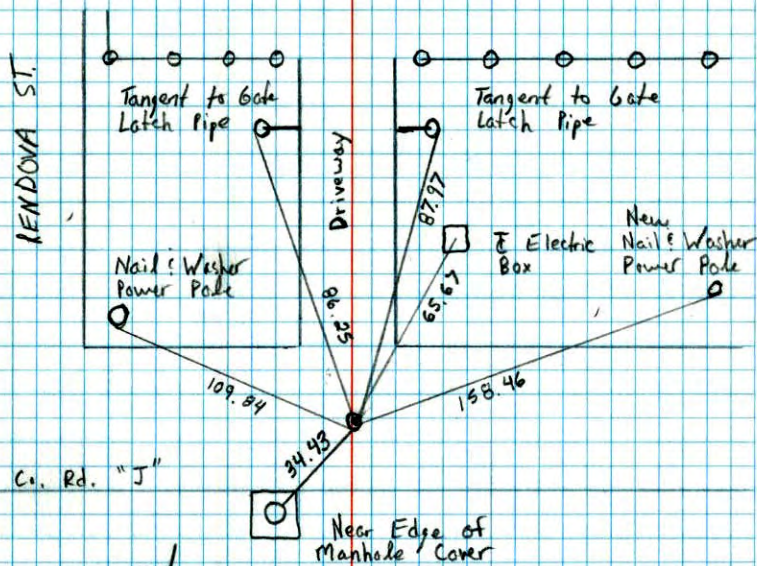
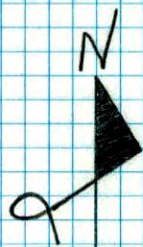
NORTH 1/4 COR. SEC 4 T 30 R 23

RETIED CAST IRON MONUMENT

PUNCH MARK
IN RIM M.H.8-3-99
J. SIMMER
T. SCHWAB

North 1/4 Corner Sec. 4 T30 R23 (Ramsey Cty.)

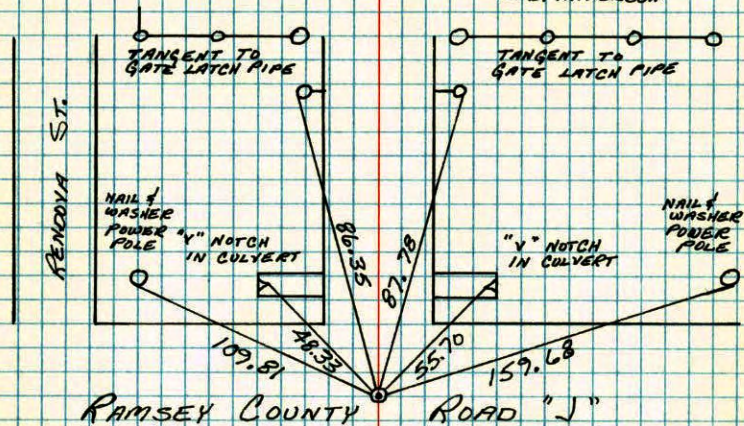
Retied Cast Iron Monument

Near Edge of
Manhole / Cover7-27-90
M. Zimmerman
D. Klersy

N¹/₄ CORNER SECTION 4-T30-R23
(RAMSEY COUNTY)

CAST IRON MONUMENT FLOSH IN PLACE OF FOUND RAILROAD SPIKE. P.M.'S 200' NORTH AND EAST.

29 OCT 64
J. OLIVER
M. D. ANDERSON



TIE CHECK
NEW TIES
11 JUN 80
B. STEPHENS
P. BOSS
P. HORNBY

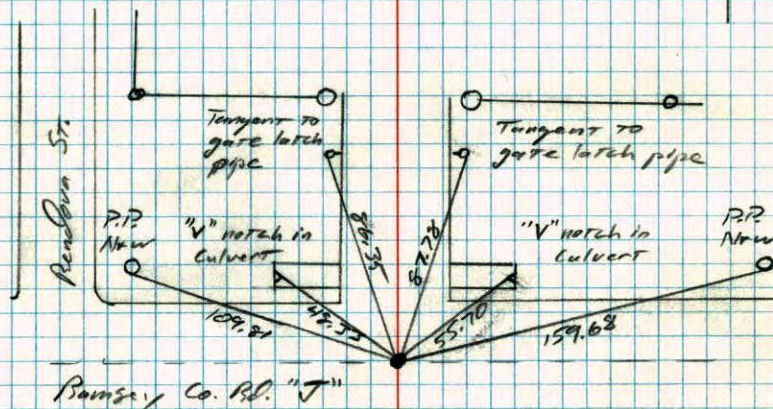
TEMPERATURE CORRECTED
AND HORIZONTALLY
TAPED MEASUREMENTS

ROLAND W. ANDERSON
COUNTY SURVEYOR
ANOKA COUNTY, MINNESOTA

N¹/₄ Cor. Sec. 4 T30 R-23 (Ramsey Co.)

Cast iron monument flush. All previous 2003 gates. Set all new ties.

6-11-80
B. Stephens
P. Boss
P. Hornby



(Ramsey Co.) 124

N¹/₄ Cor. Sec. 4, T30, R 23

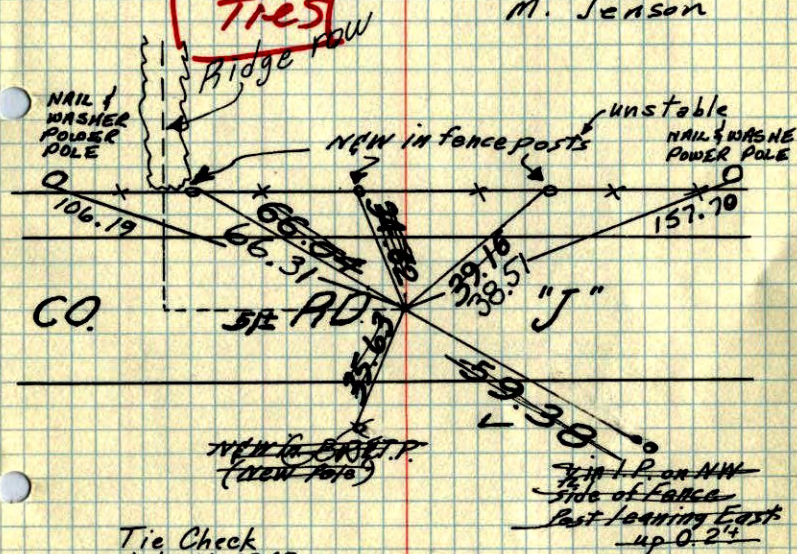
Found R.R. Spk. down 0.2'; set PK spks
2.00' North ¹/₂ East.

CAST IRON MONUMENT FLUSH.

See
New
Ties

10-1-71

H. Larson
E. Waks
M. Jensen



Tie Check
July 31, 1968

D. Powell
P. Pich
R. Olson

TIE CHECK
12 AUG 77
R. SANNERUD
S. BRIEN
J. STEPHENS.

Tie Check
5-27-75
D. Dahl
B. Sannerud

Oct. 29, 1964

J. Oliver
M. D. Anderson

TEMPERATURE CORRECTED
AND HORIZONTALLY
TAPED MEASUREMENTS

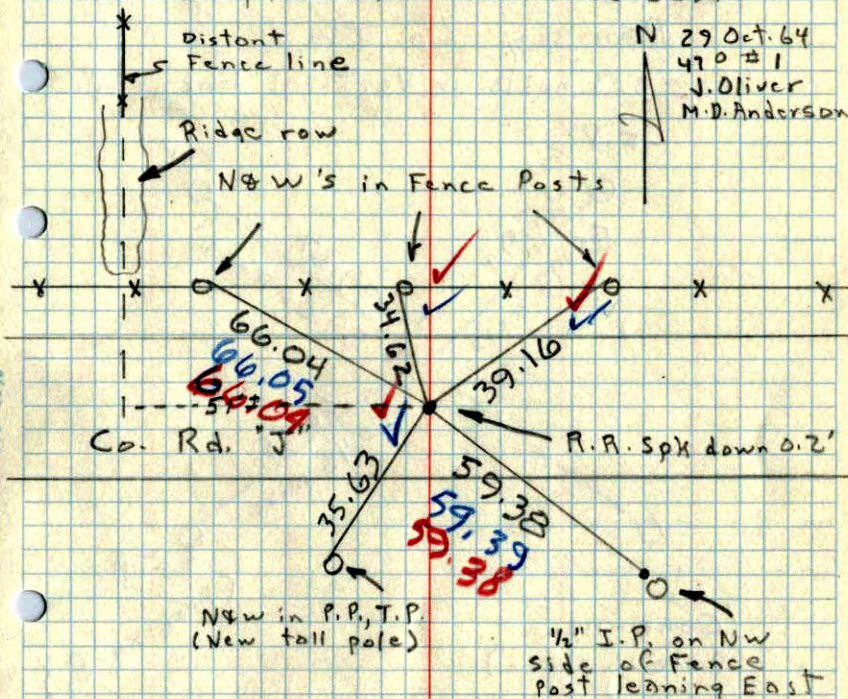
ROLAND W. ANDERSON
COUNTY SURVEYOR
ANOKA COUNTY, MINNESOTA

N¹/₄ Cor. Sec. 4, T30, R 23

Found R.R. Spk. down 0.2' which fits

3 remaining Ramsey Co. Ties. (See overleaf)

Set PK Spks 2.00' North and East.



N 29 Oct. 64
470 #1
J. Oliver
M. D. Anderson

No N-S line
of occupation

Ramsay Co. Ties
(Found 3 nails in vertical line in F.P.'s)

