

CERTIFICATE OF LOCATION OF GOVERNMENT CORNER

County of Anoka

State of Minnesota

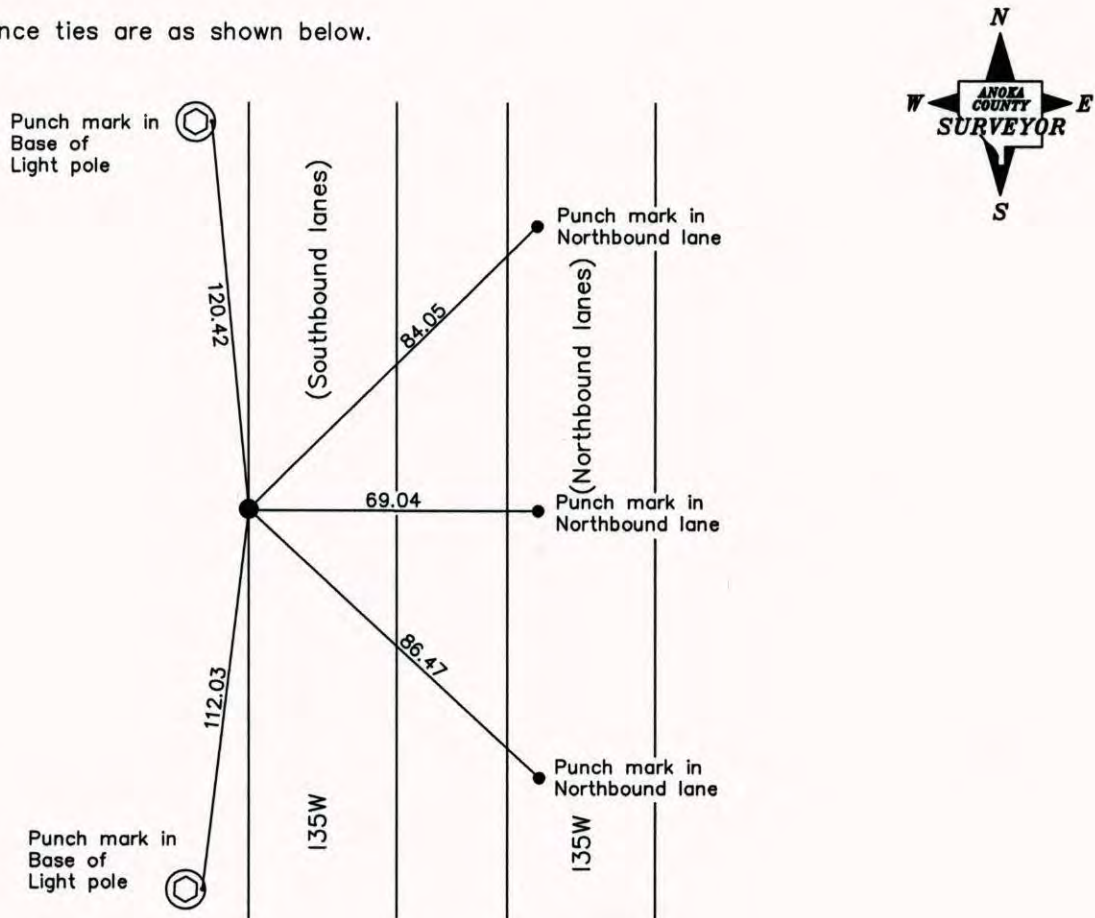
Northeast Corner of Sec. 5 Township 30 Range 23
(RAMSEY COUNTY MONUMENT)

On the 2nd day of October, 1968, the described corner was evidenced by a granite monument

and to perpetuate the location of said corner, at the exact location thereof, a permanent marker was placed consisting of a 3" brass plug epoxied into a seam on the west edge of Southbound I35W

AND on the 3rd day of August, 1999, said permanent marker was not able to be found

Updated reference ties are as shown below.



Revised date

| |
|---------|
| 7/27/90 |
| 7/03/95 |
| 8/03/99 |
| |
| |

N.A.D. 1983 Coordinates
(1996 Adjustment)

| |
|-------------------------------|
| County Project Coordinates |
| Northing <u>Not available</u> |
| Easting _____ |
| Date _____ |

I hereby certify that this United States public land survey monument record is correct and complete to the best of my knowledge and belief.

_____ Date _____

_____, Anoka County Surveyor

Minnesota License Number _____

CERTIFICATE OF LOCATION OF GOVERNMENT CORNER

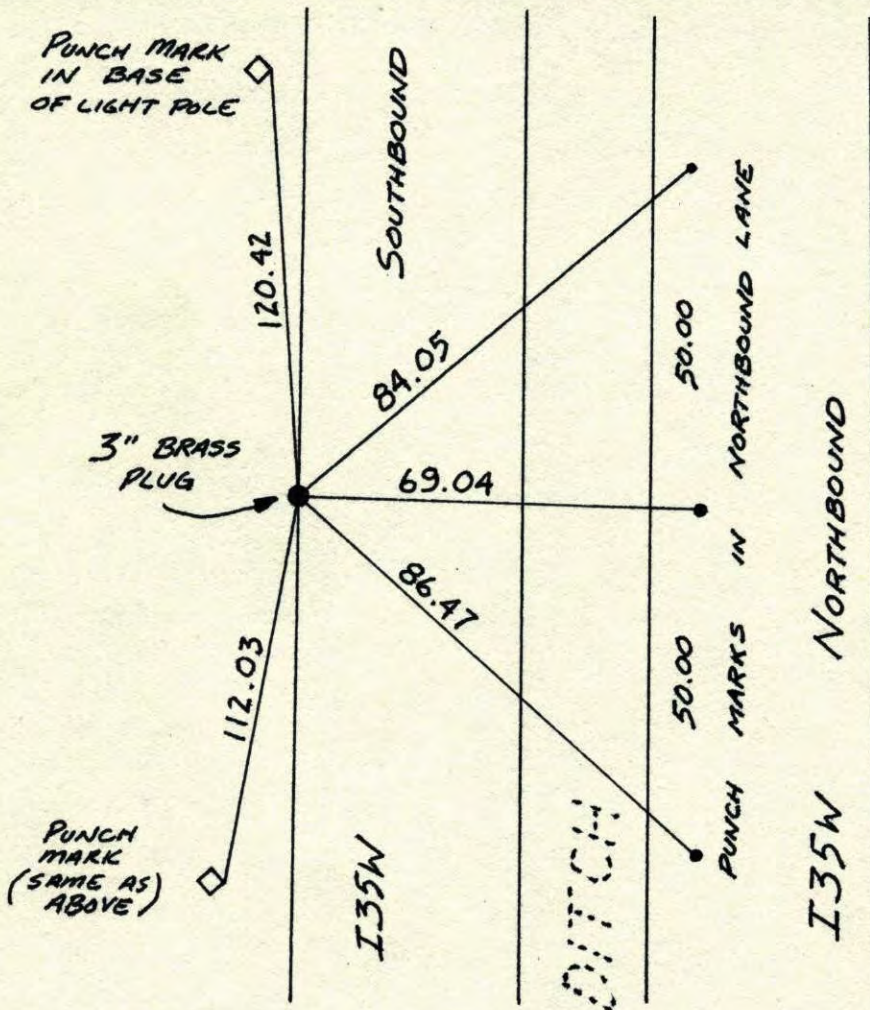
County of Anoka

State of Minnesota

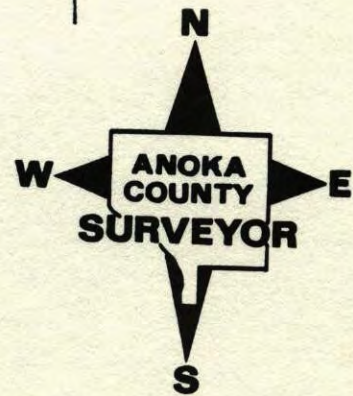
NORTHEAST Corner of Sec. 5 Township 30 ~~31~~ Range 23

I hereby certify that on the 2 day of OCT., 1968, I found the described corner which was evidenced by GRANITE MON.

and I further certify that to perpetuate the location of said corner, I did, at the exact location thereof, place a permanent marker consisting of 3" BRASS PLUG EPOXIED INTO SEAM ON WEST EDGE OF SOUTHBOUND I-35W which reference or witness monuments are located in the manner following:

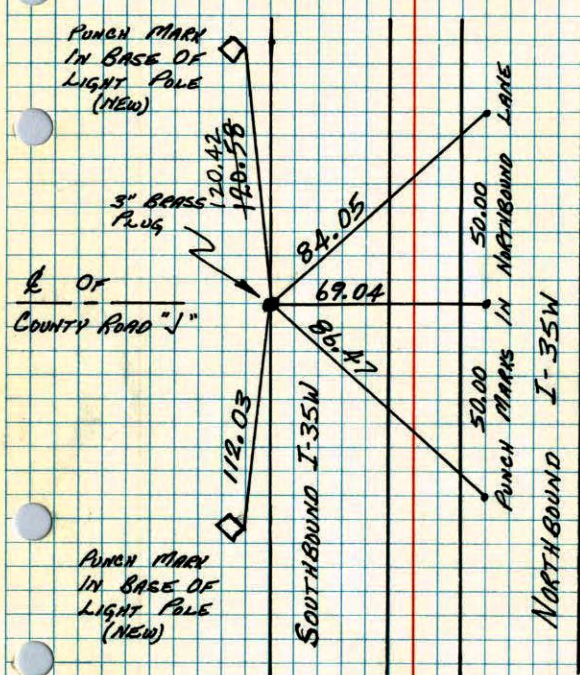


| Revised date | Revised date | Revised date |
|--------------|--------------|--------------|
| 7-27-90 | | |
| 7-3-95 | | |
| | | |
| | | |
| | | |
| | | |



N.E. CORNER; SECTION 5, T30, R23

RESET CORNER FROM CONSTRUCTION TIES. SET
3" BRASS PLUG IN SEAM ON WEST EDGE OF
SOUTHBOUND LANE I-35W. MONUMENT UNDER
COUNTY ROAD "J" BRIDGE.



SEPT. 6-1977
 H. LARSON
 B. GUETZKO
 J. BOETTCHER

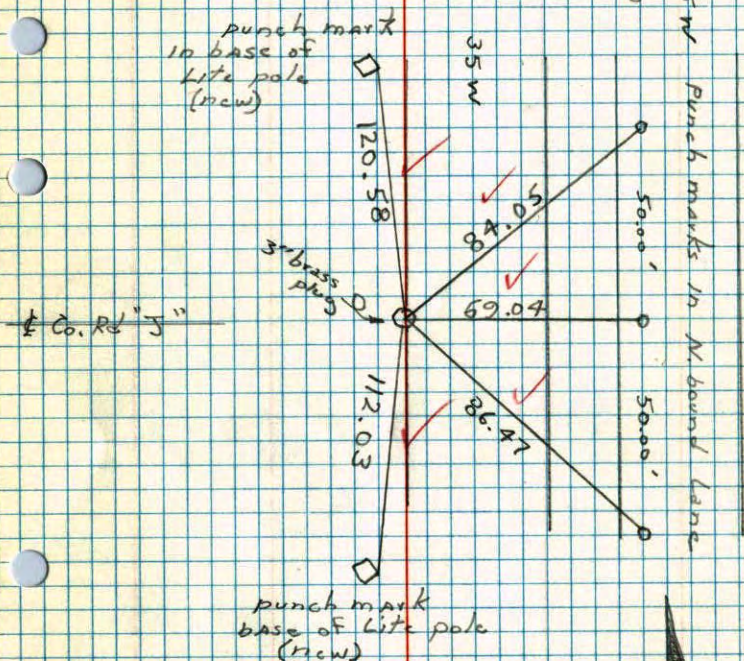
TIE CHECK
 6-13-80
 B. STEPHENS
 P. ROSS
 P. HORNBY

TEMPERATURE CORRECTED
AND HORIZONTALLY
TAPED MEASUREMENTS

ROLAND W. ANDERSON
COUNTY SURVEYOR
ANOKA COUNTY, MINNESOTA

NE Cor. Sec. 5 T30 R23

Reset corner from construction ties
Set 3" brass plug in seam on west
edge of Southbound Lane, I-35W
monument under Co. Rd. J. bridge



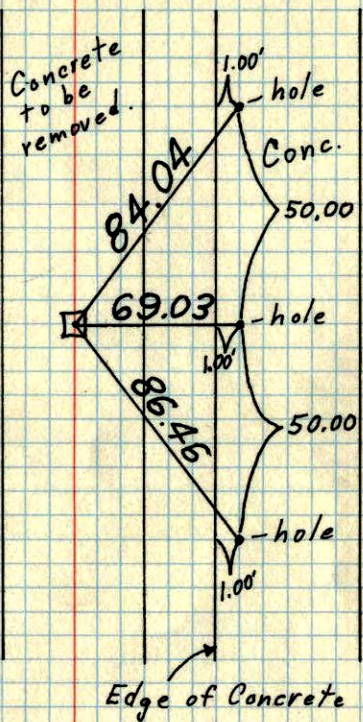
*7 70°
 9-6-77
 H. Larson
 B. Guetzko
 J. Boettcher

(Ramsey Co.) 126

NE Cor. Sec. 5 - T30 - R23

Granite Monument to be destroyed.
Monument under bridge in concrete road.
(US #8)

October 2, 1968
M. D. Anderson
H. J. Larson
R. A. Olson



9-27-71
H. Larson
F. Waks
M. Jensen

TEMPERATURE CORRECTED
AND HORIZONTALLY
TAPED MEASUREMENTS

ROLAND W. ANDERSON
COUNTY SURVEYOR
ANOKA COUNTY, MINNESOTA

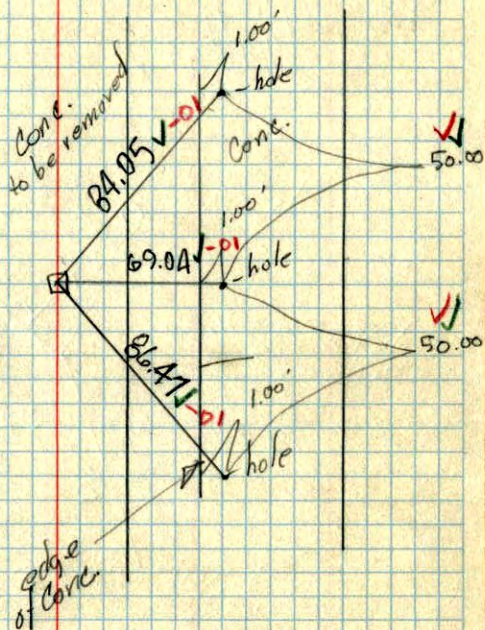
(Ramsey Co.)

NE Cor. Sec. 5 - T30 - R23

Granite Mon. to be destroyed
Mon. under bridge in Conc. Road (US #8)

Oct. 2, 1968
M. D. Anderson
H. J. Larson
R. A. Olson

Temp. 48° ✓
Tape #5 ✓

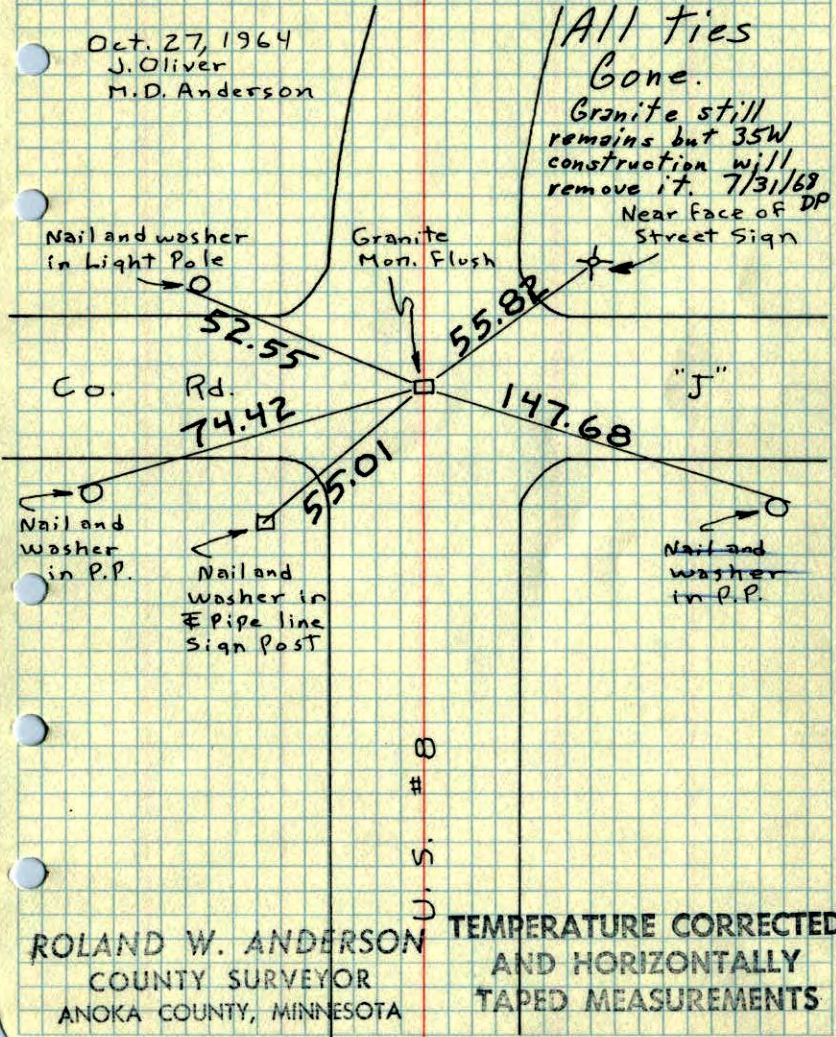


NE Cor. Sec. 5, T30, R23

Found 6" Sq. Granite Monument with drill hole in center (Ramsey Co. Granite) Flush with Concrete Pavement of U.S. Highway #8.

Oct. 27, 1964
J. Oliver
M.D. Anderson

All ties Gone.
Granite still remains but 35W construction will remove it. 7/31/68
Near face of DP Street Sign



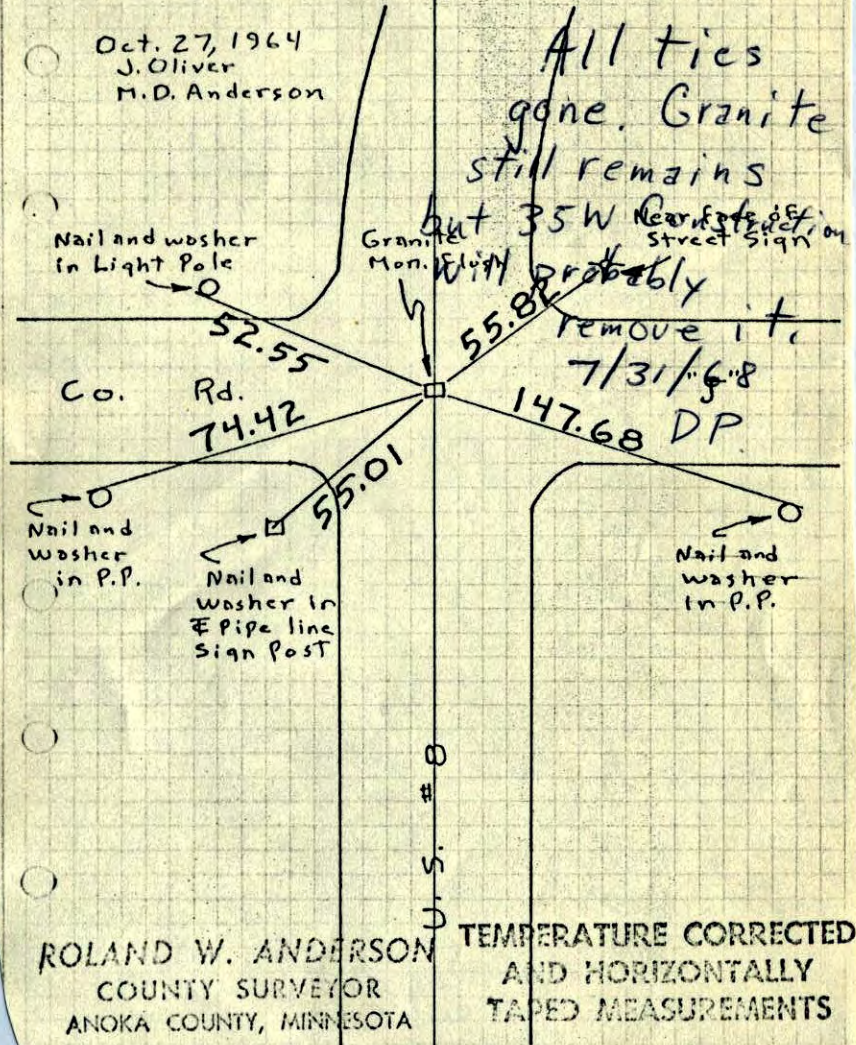
ROLAND W. ANDERSON COUNTY SURVEYOR ANOKA COUNTY, MINNESOTA
TEMPERATURE CORRECTED AND HORIZONTALLY TAPED MEASUREMENTS

NE Cor. Sec. 5, T30, R23

Found 6" Sq. Granite Monument with drill hole in center (Ramsey Co. Granite) Flush with Concrete Pavement of U.S. Highway #8.

Oct. 27, 1964
J. Oliver
M.D. Anderson

All ties gone. Granite still remains but 35W construction will probably remove it. 7/31/68
Near face of DP Street Sign



ROLAND W. ANDERSON COUNTY SURVEYOR ANOKA COUNTY, MINNESOTA
TEMPERATURE CORRECTED AND HORIZONTALLY TAPED MEASUREMENTS

NE Cor. Sec. 5, T30, R23

Found 6" Sq. Granite with drill hole in
center (Ramsey Co. Granite) flush with
conc. Pvm't. of U.S. #8

