

CERTIFICATE OF LOCATION OF GOVERNMENT CORNER

County of Anoka

State of Minnesota

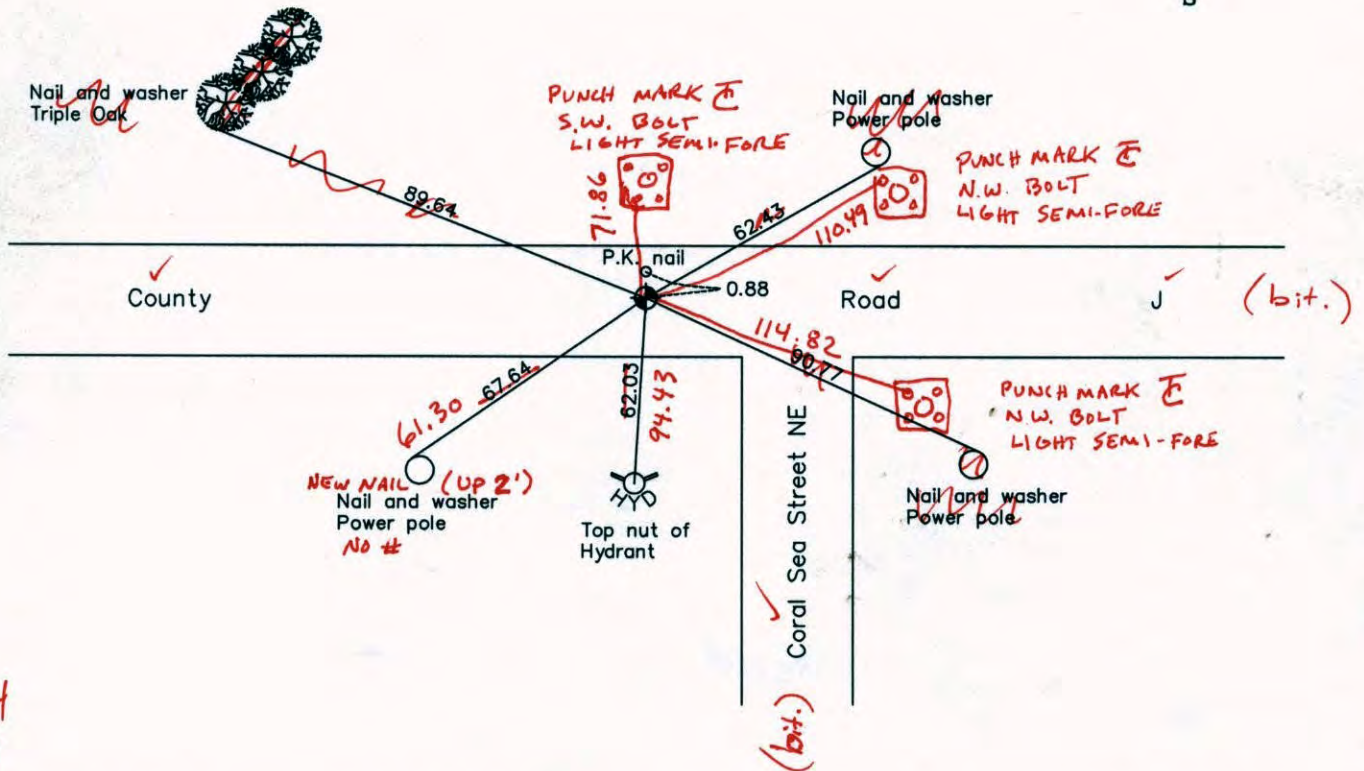
North 1/4 Corner of Sec. 5 Township 30 Range 23
(RAMSEY COUNTY MONUMENT)

On the 27th day of October, 1964, the described corner was evidenced by a 6" square granite monument

and to perpetuate the location of said corner, at the exact location thereof, a permanent marker was placed consisting of a cast iron monument (Correction Monument 1995) (IN COVERED TUBE)
(DOWN 0.5'±)

AND on the ___ day of _____, _____, said permanent marker was _____

Updated reference ties are as shown below.



7-14-14
BK-55
TOTAL
3
VR 5

Revised date	N.A.D. 1983 Coordinates (1996 Adjustment)
10/17/90	County Project Coordinates
7/05/95	Northing <u>132500.1027</u>
8/03/99	Easting <u>517472.7557</u>
	Date <u>8/03/99</u>

I hereby certify that this United States public land survey monument record is correct and complete to the best of my knowledge and belief.

Date _____
_____, Anoka County Surveyor
Minnesota License Number _____

3DQ = 0.05 N = 132500.0919 E = 517472.6746

CERTIFICATE OF LOCATION OF GOVERNMENT CORNER

County of Anoka

State of Minnesota

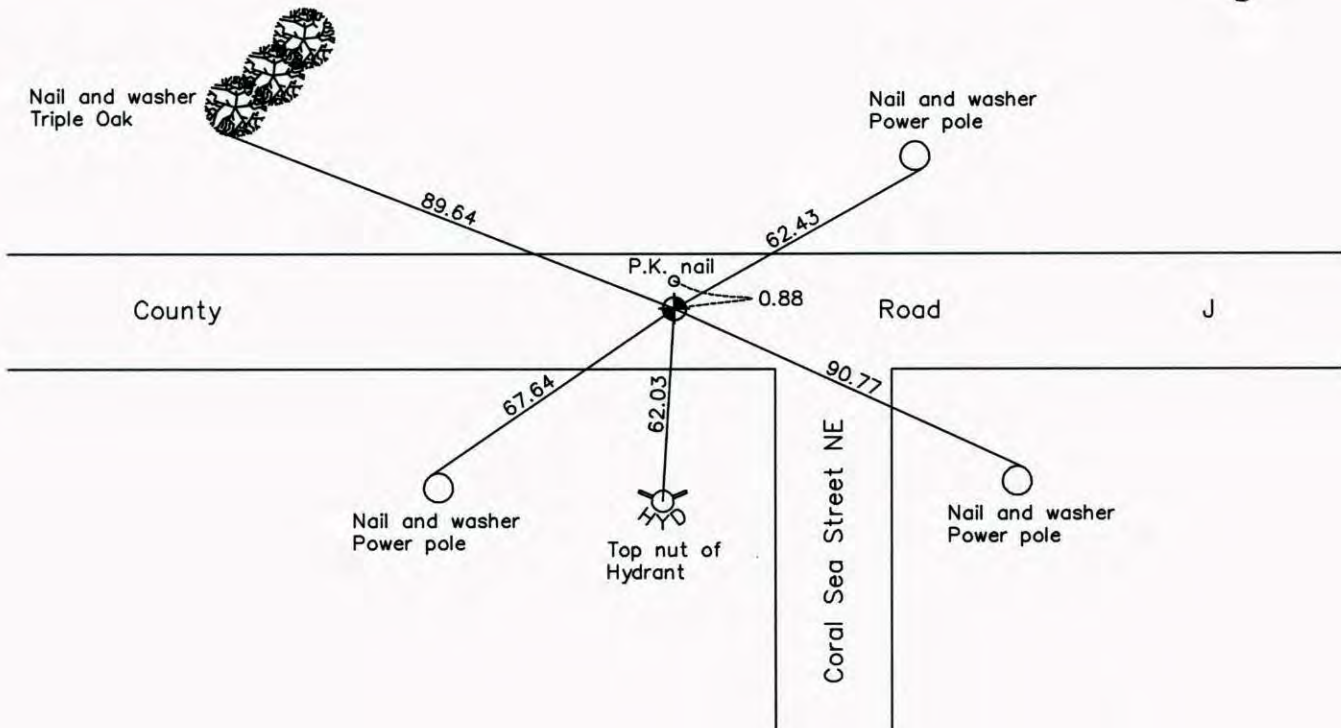
North $\frac{1}{4}$ Corner of Sec. 5 Township 30 Range 23
(RAMSEY COUNTY MONUMENT)

On the 27th day of October, 1964, the described corner was evidenced by a 6" square granite monument

and to perpetuate the location of said corner, at the exact location thereof, a permanent marker was placed consisting of a cast iron monument (Correction Monument 1995)

AND on the ___ day of _____, _____, said permanent marker was _____

Updated reference ties are as shown below.



Revised date
10/17/90
7/05/95
8/03/99

N.A.D. 1983 Coordinates (1996 Adjustment)	
County Project Coordinates	
Northing	<u>132500.1027</u>
Easting	<u>517472.7557</u>
Date	<u>8/03/99</u>

I hereby certify that this United States public land survey monument record is correct and complete to the best of my knowledge and belief.

_____ Date _____

_____, Anoka County Surveyor

Minnesota License Number _____

CERTIFICATE OF LOCATION OF GOVERNMENT CORNER

County of Anoka

State of Minnesota

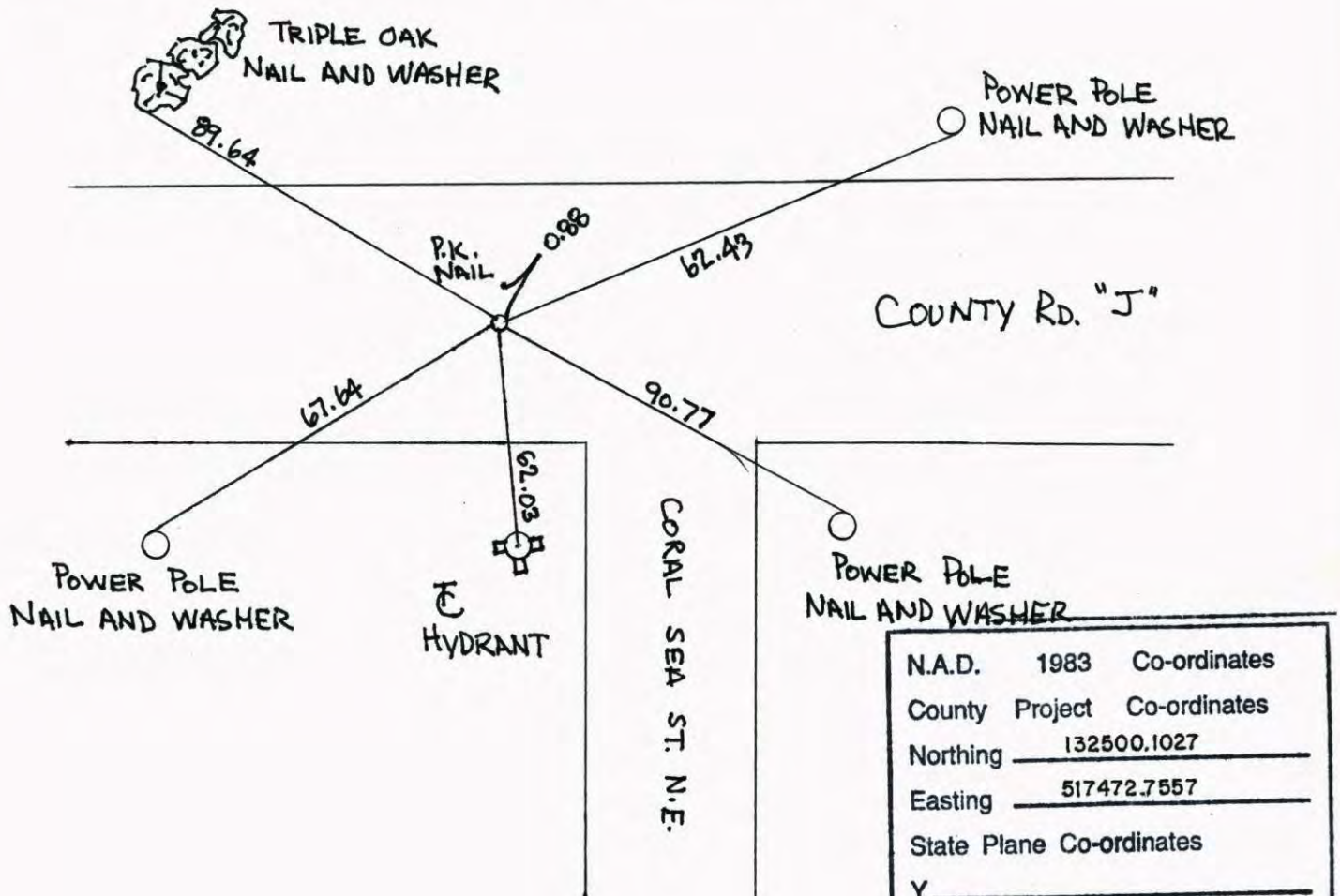
NORTH 1/4 Corner of Sec. 5 Township 30 Range 23

(RAMSEY Co.)

I hereby certify that on the 27 day of OCTOBER, 19 64, I found the described corner which was evidenced by 6" SQ. GRANITE MONUMENT

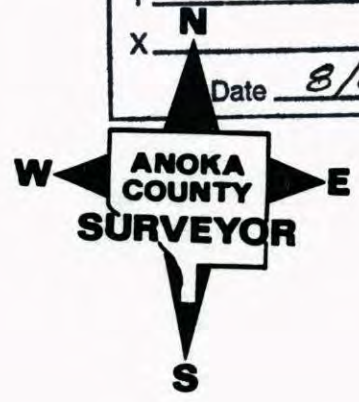
and I further certify that to perpetuate the location of said corner, I did, at the exact location thereof, place a permanent marker consisting of CAST IRON MONUMENT (CORRECTION MONUMENT)

which reference or witness monuments are located in the manner following:

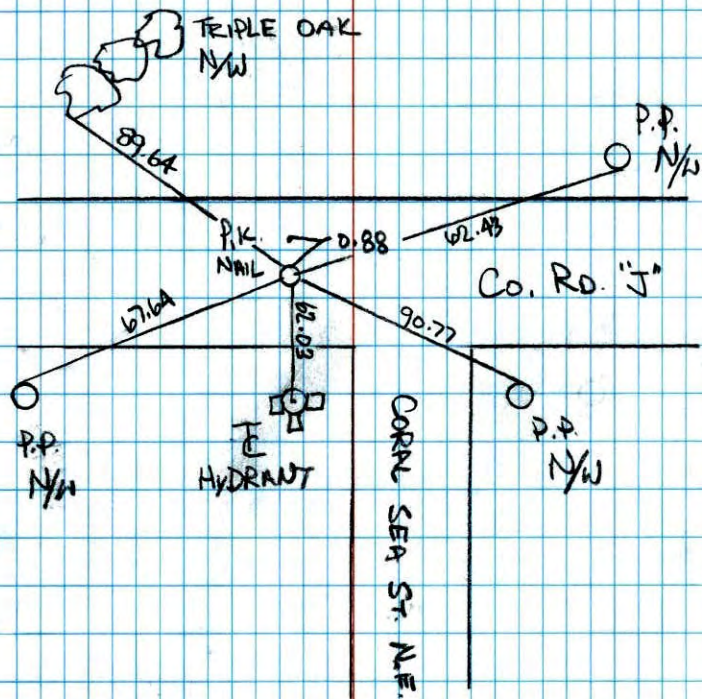


N.A.D.	1983	Co-ordinates
County	Project	Co-ordinates
Northing		<u>132500.1027</u>
Easting		<u>517472.7557</u>
State Plane Co-ordinates		
Y		_____
X		_____
Date		<u>8/03/99</u>

Revised date	Revised date	Revised date
<u>10-17-90</u>		
<u>7-5-95</u>		
<u>8-3-99</u>		



NORTH 1/4 COR. SEC. 5, T. 30 R. 23

RAMSEY CO. MONUMENT - RETIED DURING
GPS OF BLAINE

8-3-99

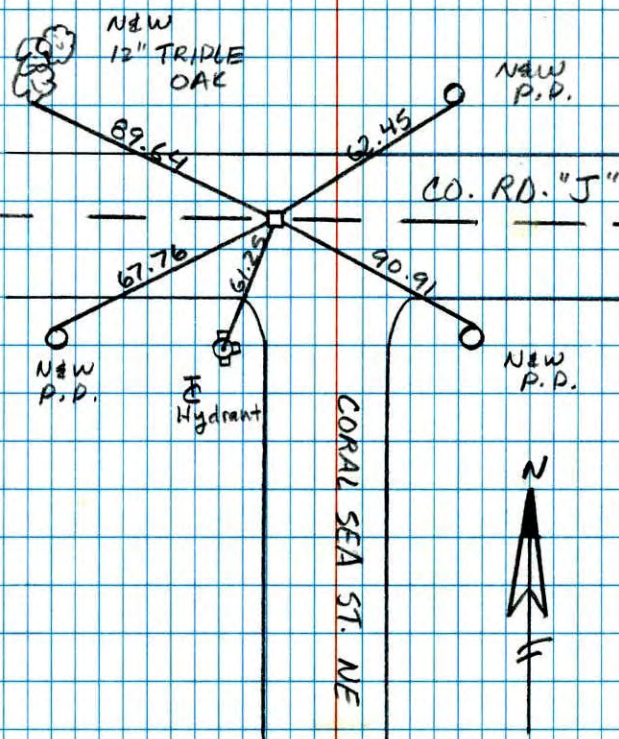
J. SUMMER

T. SCHWAB



N 1/4 Sec. 5 T. 30 R. 23

RETIE GRANITE MON.



JOSH & JASON

ANDERSON

7-5-95



