

CERTIFICATE OF LOCATION OF GOVERNMENT CORNER

County of Anoka

State of Minnesota

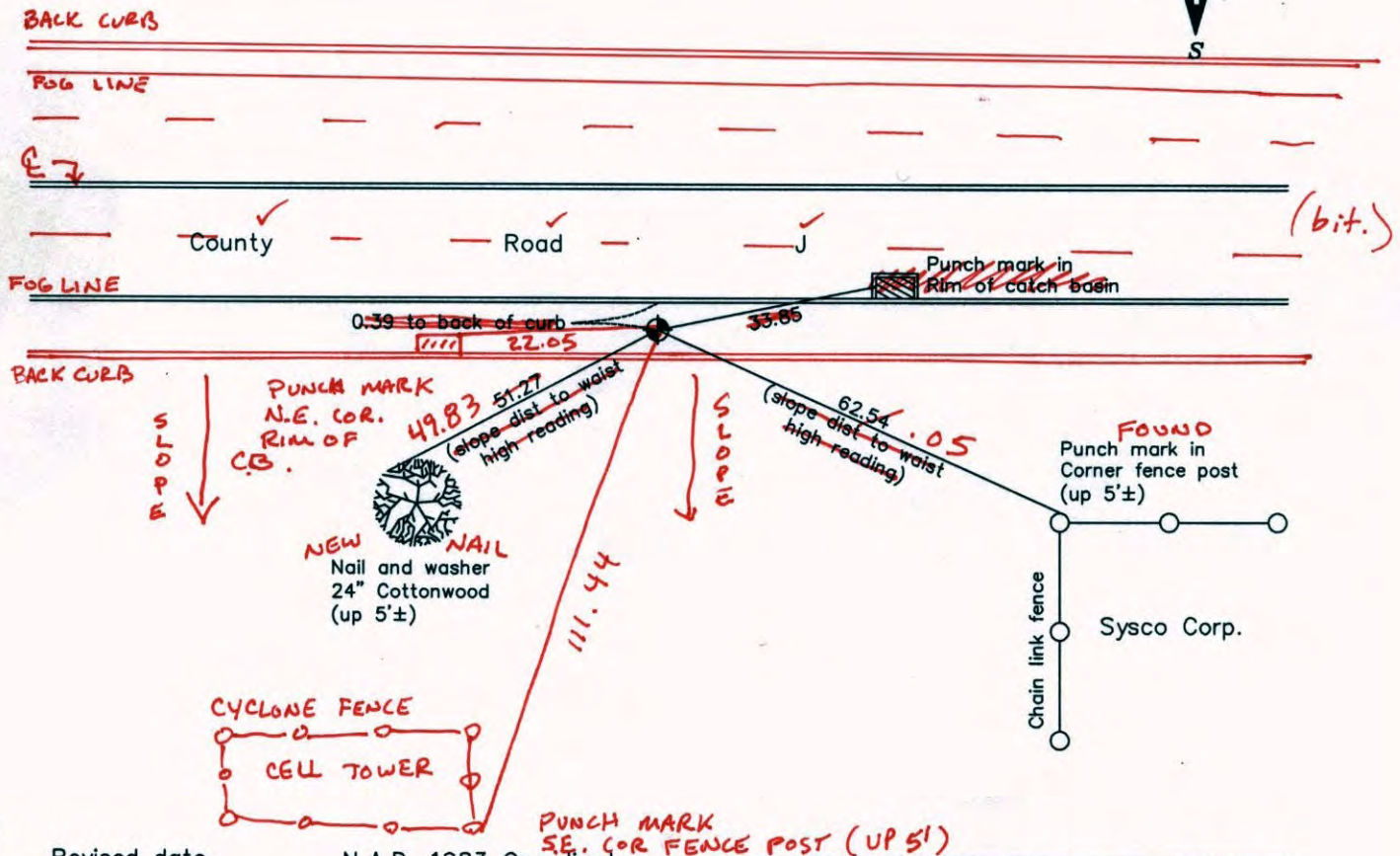
Northeast Corner of Sec. 6 Township 30 Range 23
(RAMSEY COUNTY MONUMENT)

On the 27th day of October, 1964, the described corner was evidenced by a 6" square granite monument

and to perpetuate the location of said corner, at the exact location thereof, a permanent marker was placed consisting of a cast iron monument (IN COVERED TUBE IN BIT. SHOULDER)

AND on the ___ day of _____, _____, said permanent marker was _____

Updated reference ties are as shown below.



7-3-14
BK-55
T/T

Revised date	6/04/86
	8/01/90
	8/03/99

N.A.D. 1983 Coordinates (1996 Adjustment)	
County Project Coordinates	
Northing	132515.8502
Easting	514824.4879
Date	8/03/99

I hereby certify that this United States public land survey monument record is correct and complete to the best of my knowledge and belief.

_____ Date _____

_____, Anoka County Surveyor

Minnesota License Number _____

CERTIFICATE OF LOCATION OF GOVERNMENT CORNER

County of Anoka

State of Minnesota

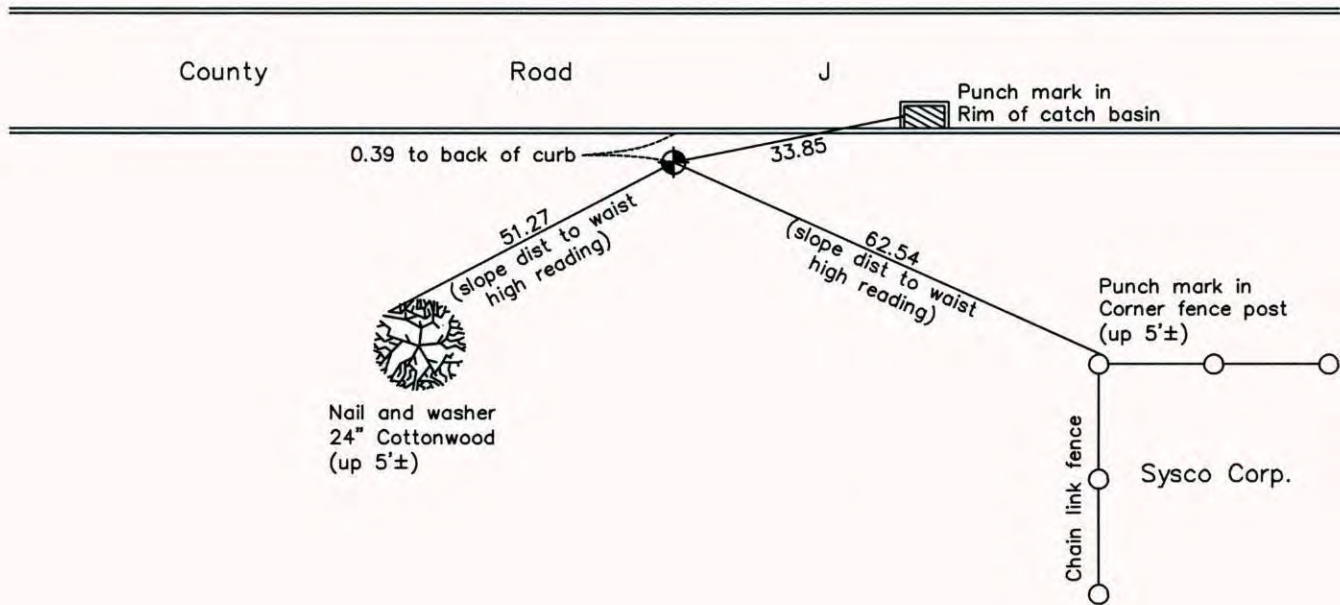
Northeast Corner of Sec. 6 Township 30 Range 23
(RAMSEY COUNTY MONUMENT)

On the 27th day of October, 1964, the described corner was evidenced by a 6" square granite monument

and to perpetuate the location of said corner, at the exact location thereof, a permanent marker was placed consisting of a cast iron monument

AND on the ___ day of _____, _____, said permanent marker was _____

Updated reference ties are as shown below.



Revised date
6/04/86
8/01/90
8/03/99

N.A.D. 1983 Coordinates (1996 Adjustment)	
County Project Coordinates	
Northing	<u>132515.8502</u>
Easting	<u>514824.4879</u>
Date	<u>8/03/99</u>

I hereby certify that this United States public land survey monument record is correct and complete to the best of my knowledge and belief.

_____, Date _____
_____, Anoka County Surveyor
Minnesota License Number _____

CERTIFICATE OF LOCATION OF GOVERNMENT CORNER

County of Anoka

State of Minnesota

NORTHEAST Corner of Sec. 6 Township 30 Range 23
(RAMSEY CO.)

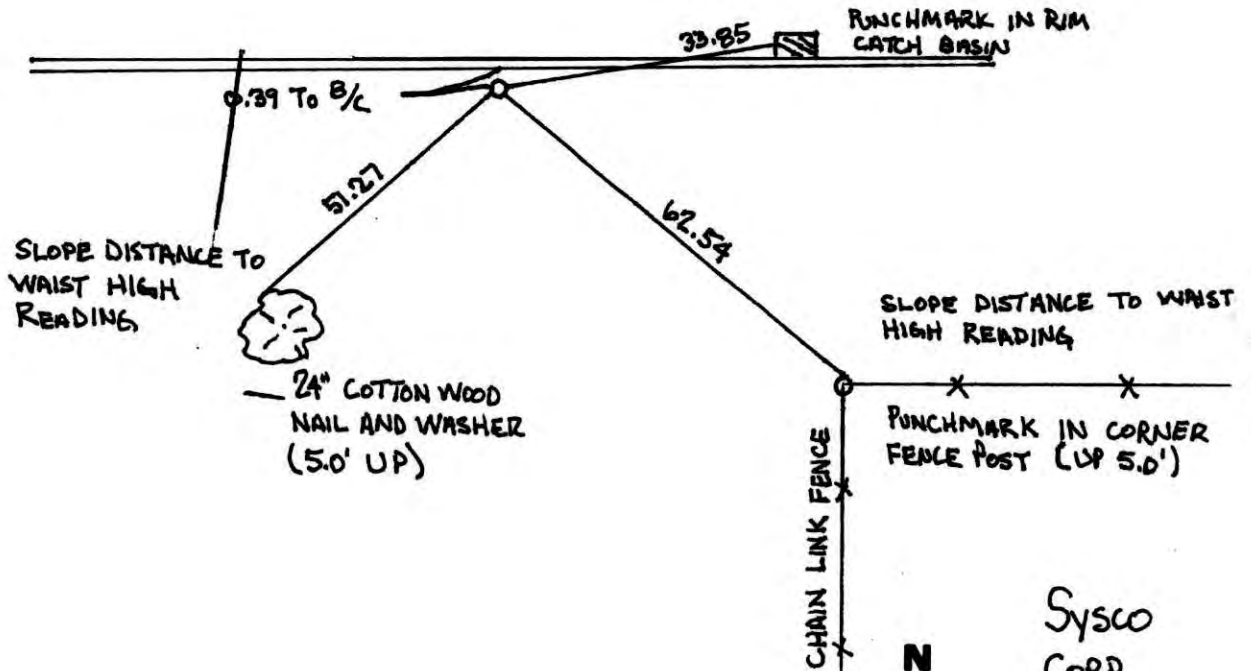
I hereby certify that on the 27 day of OCTOBER, 1964, I found the described corner which was evidenced by 6" SQ. GRANITE MONUMENT

and I further certify that to perpetuate the location of said corner, I did, at the exact location thereof, place a permanent marker consisting of CAST IRON MONUMENT

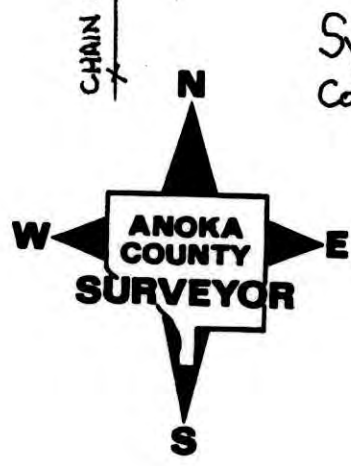
which reference or witness monuments are located in the manner following:

N.A.D.	1983	Co-ordinates
County Project		Co-ordinates
Northing	<u>132515.8502</u>	
Easting	<u>514824.4879</u>	
State Plane Co-ordinates		
Y		
X		
Date	<u>8/03/99</u>	

COUNTY RD. "J"

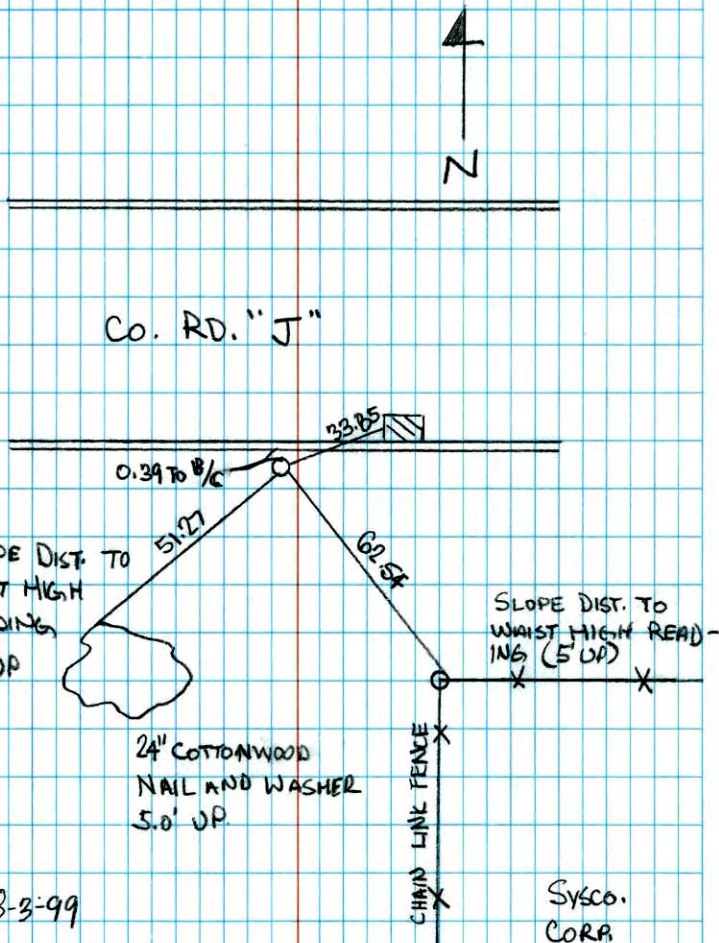


Revised date	Revised date	Revised date
<u>6-4-86</u>		
<u>8-1-90</u>		
<u>8-3-99</u>		



NORTHEAST COR. SEC. 6 T. 30, R. 23

RAMSEY CO. MON - RETIED DURING
GPS OF BLAINE

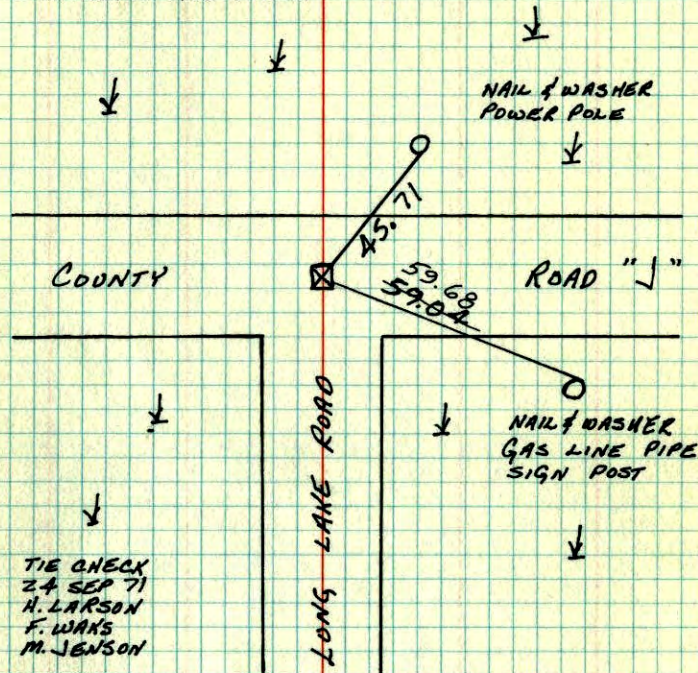


8-3-99
J. SIMMER
T. SCHWAB

SYSCO.
CORP.

N.E. COR. SEC. 6 - T30 - R23

~~6" SQUARE GRANITE MONUMENT WITH DRILL HOLE IN CENTER, FLUSH WITH SURFACE. SET PINS 2.00' NORTH AND EAST.~~
27 OCT 64
J. OLIVER
CAST IRON MONUMENT IMBEDDED M.D ANDERSON IN CONCRETE AND FLUSH



TIE CHECK
24 SEP 71
H. LARSON
F. WAHS
M. JENSON

TIE CHECK
27 MAY 75
O. DANL
B. SANNERUD

TIE CHECK
15 AUG 77
SANNERUD
S. BRIEN
J. STEPHENS

TIE CHECK
6-13-80
B. STEPHENS
P. ROSS
P. HORNBY

TEMPERATURE CORRECTED
AND HORIZONTALLY
TAPED MEASUREMENTS

ROLAND W. ANDERSON
COUNTY SURVEYOR
ANOKA COUNTY, MINNESOTA

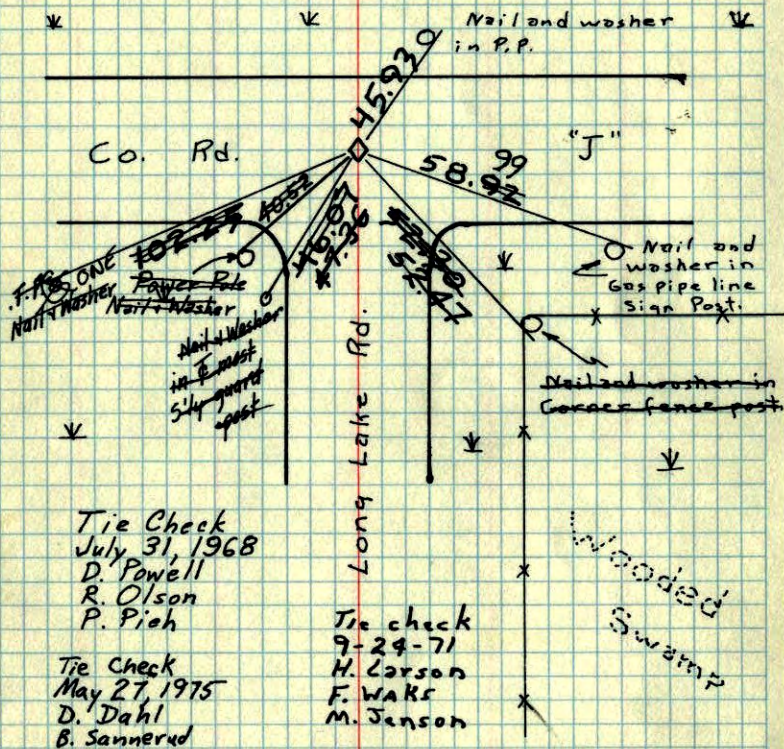
B

(Ramsey Co.)

130

NE Cor. Sec. 6, T. 30, R. 23

6" sq. Granite Mon. with drill hole in center, flush with blacktop. Set PK spts. 2.0' North and East

27 Oct. 64
J. Oliver
M. D. AndersonTie Check
July 31, 1968
D. Powell
R. Olson
P. PiehTie Check
May 27, 1975
D. Dahl
B. SannerudTie check
9-29-71
H. Larson
F. Waks
M. Jensen

ROLAND W. ANDERSON COUNTY SURVEYOR ANOKA COUNTY, MINNESOTA

TEMPERATURE CORRECTED AND HORIZONTALLY TAPED MEASUREMENTS

NE Cor. Sec. 6, T30, R 23

Found 6" Sq. Granite Mon. with drill hole in center (Ramsey Co. Gran.) Flush with Blacktop. - Set PK Spk's 2.00' North and East.

27 Oct. 64
68P #1
J. Oliver
M. D. Anderson