

CERTIFICATE OF LOCATION OF GOVERNMENT CORNER

County of Anoka

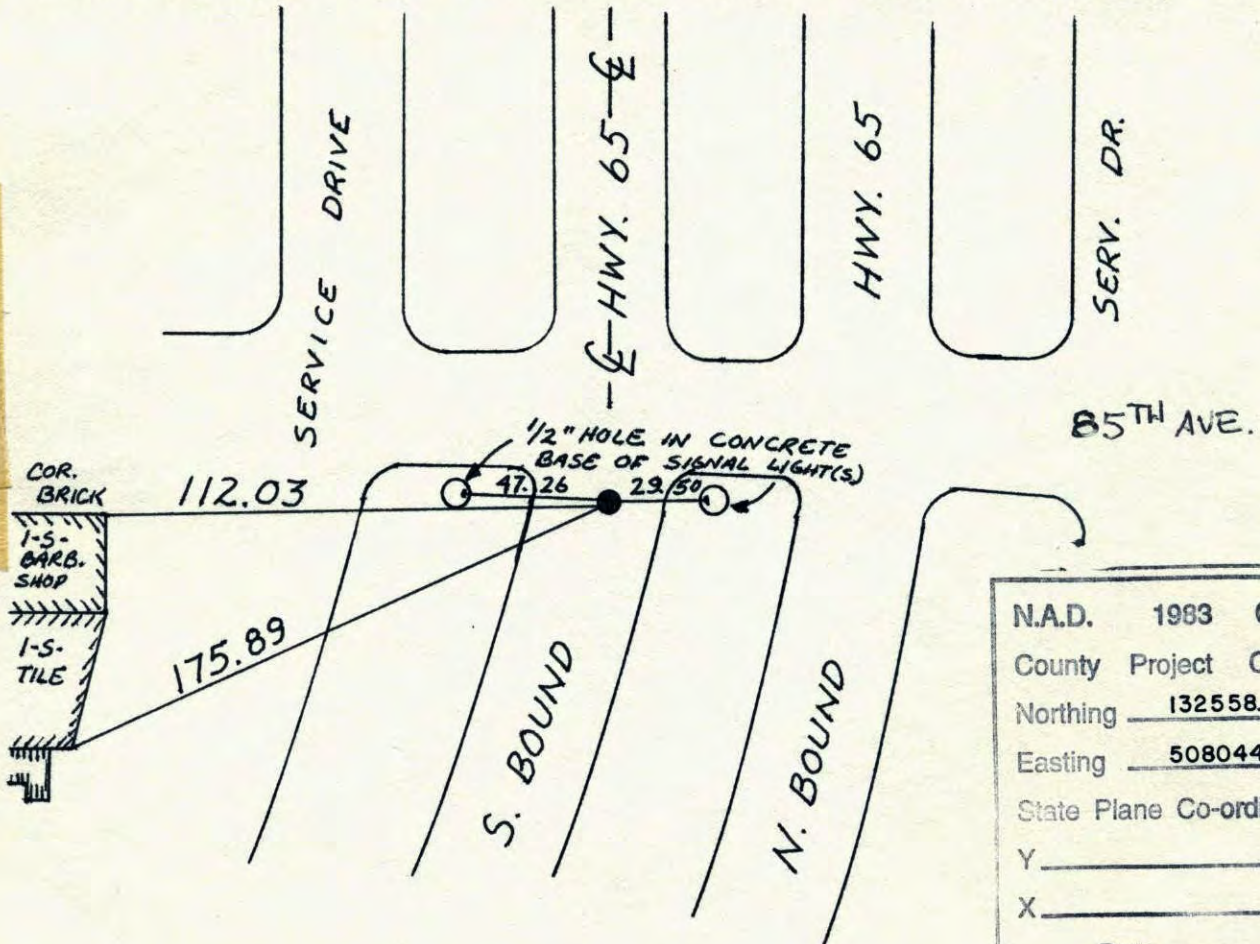
State of Minnesota

SOUTH QTR. Corner of Sec. 32 Township 31 Range 23

I hereby certify that on the 31 day of DEC., 1964, I found the described corner which was evidenced by P.K. SET FROM PLATTING

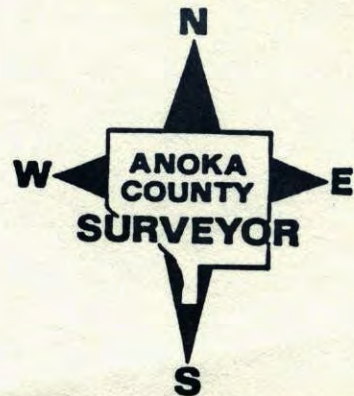
and I further certify that to perpetuate the location of said corner, I did, at the exact location thereof, place a permanent marker consisting of CAST IRON MON.

which reference or witness monuments are located in the manner following:



N.A.D.	1983	Co-ordinates
County	Project	Co-ordinates
Northing	<u>132558.5766</u>	
Easting	<u>508044.4209</u>	
State Plane Co-ordinates		
Y	_____	
X	_____	
Date	_____	

Revised date	Revised date	Revised date
6-3-86		
7-11-90		
7-18-95		



CERTIFICATE OF LOCATION OF GOVERNMENT CORNER

County of Anoka

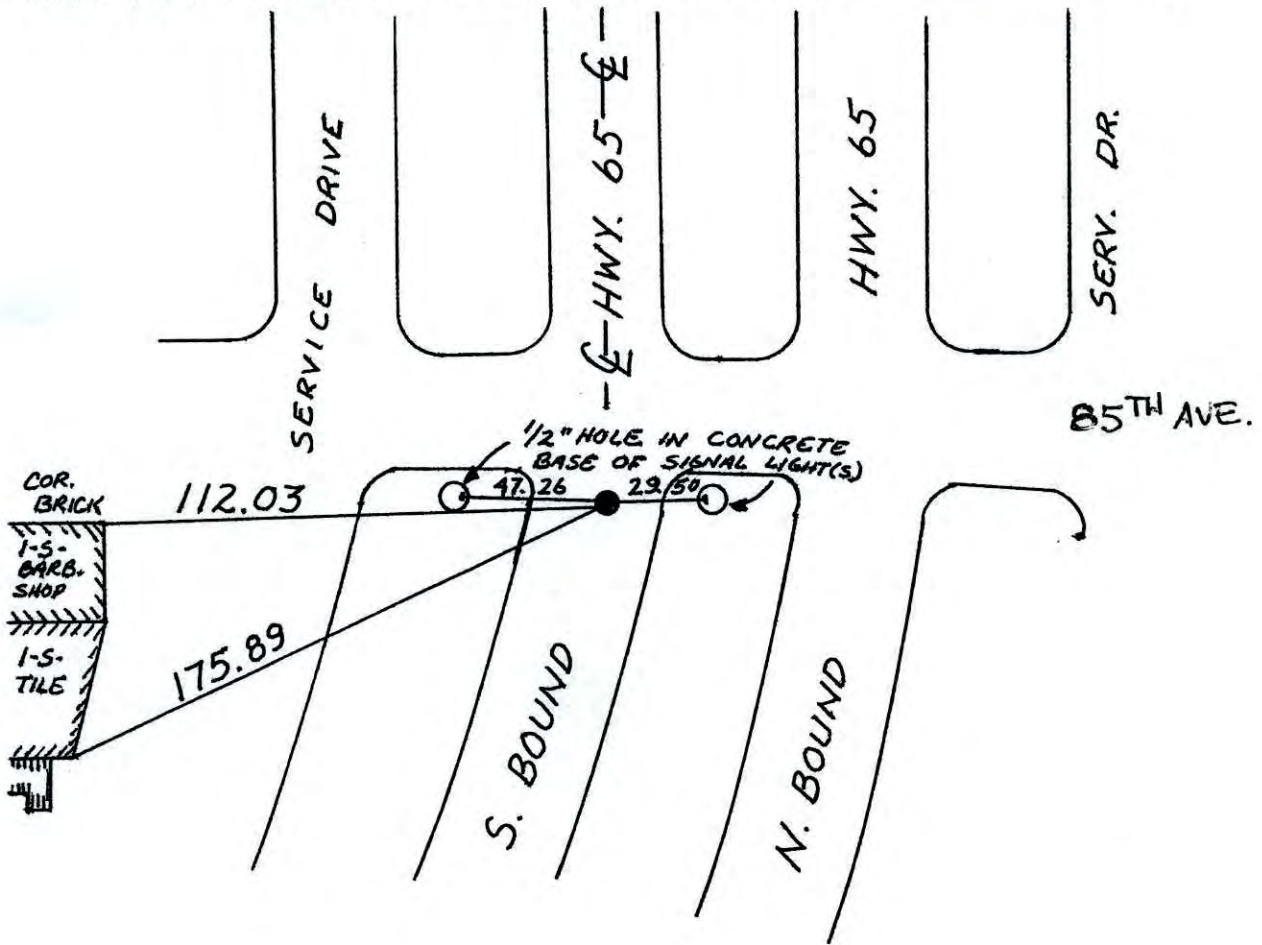
State of Minnesota

SOUTH QTR. Corner of Sec. 32 Township 31 Range 23

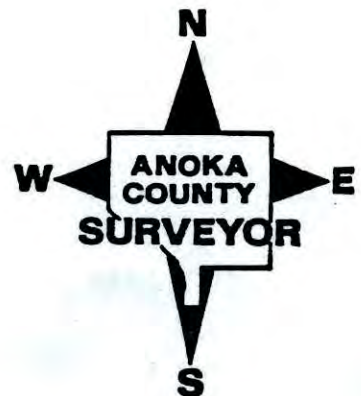
I hereby certify that on the 31 day of DEC., 1964, I found the described corner which was evidenced by P.K. SET FROM PLATTING

and I further certify that to perpetuate the location of said corner, I did, at the exact location thereof, place a permanent marker consisting of CAST IRON MON.

which reference or witness monuments are located in the manner following:

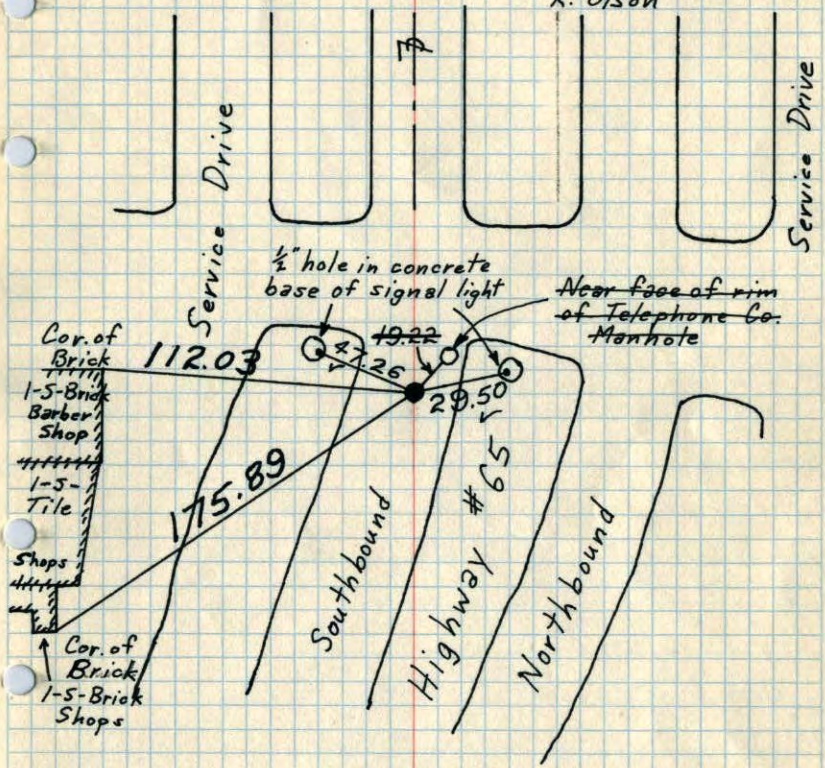


Revised date	Revised date	Revised date
6-3-86		
7-11-90		
7-18-95		



13-1
S 1/4 Cor. Sec. 32-T31-R23

Set PK Nail from Plotting. Dec. 31, 1964
 J. Oliver
 M. D. Anderson
 M. Nordin
 Replaced PK with Cast Iron Monument flush. Aug. 26, 1969
 PK's 2.00' North + East. D. Powell
 Monument is 3± West of extended E. H. Larson
 R. Olson



Tie Check
 May 29, 1975
 D. Dahl
 B. Sannerud

TIE CHECK
 11 AUG 77
 R. SANNERUD
 S. BRIEN
 J. STEPHENS
 H. LARSON +

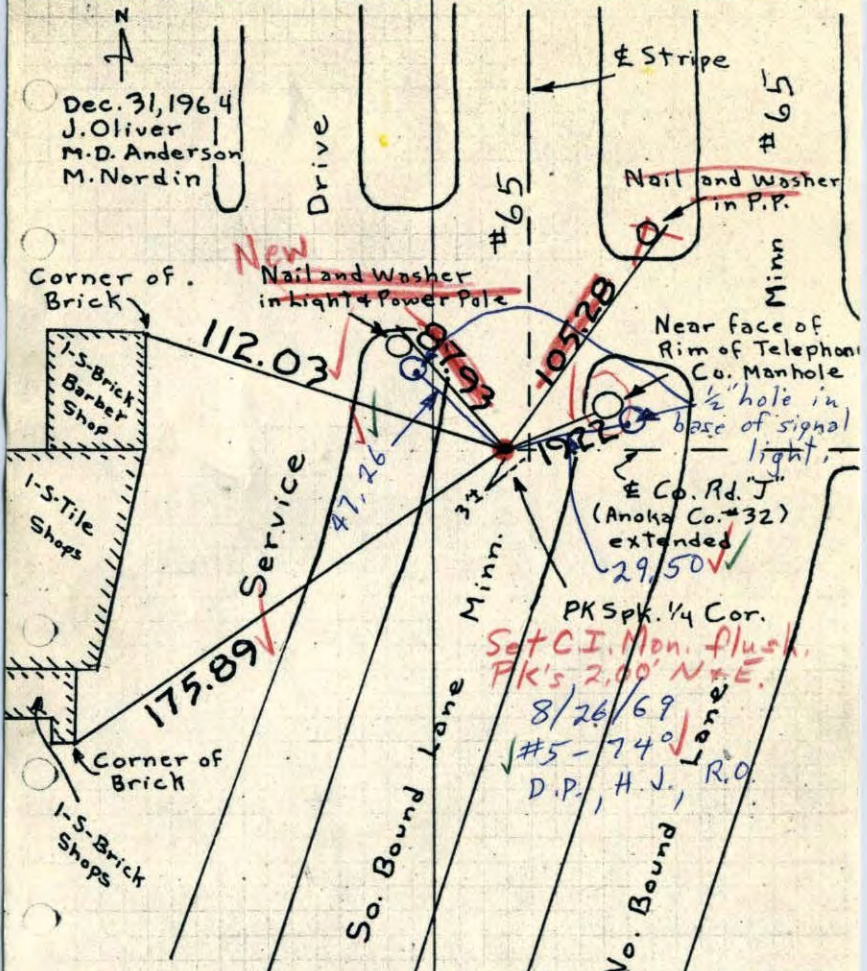
TIE CHECK
 6-19-80
 B. STEPHENS
 P. ROSS
 P. HORNBY

TEMPERATURE CORRECTED
 AND HORIZONTALLY
 TAPED MEASUREMENTS

ROLAND W. ANDERSON
 COUNTY SURVEYOR
 ANOKA COUNTY, MINNESOTA

S 1/4 Cor. Sec. 32, T31, R23

Set PK Spk. From Plotting. Also there are PK Spks 0.77' East and 0.51' West.

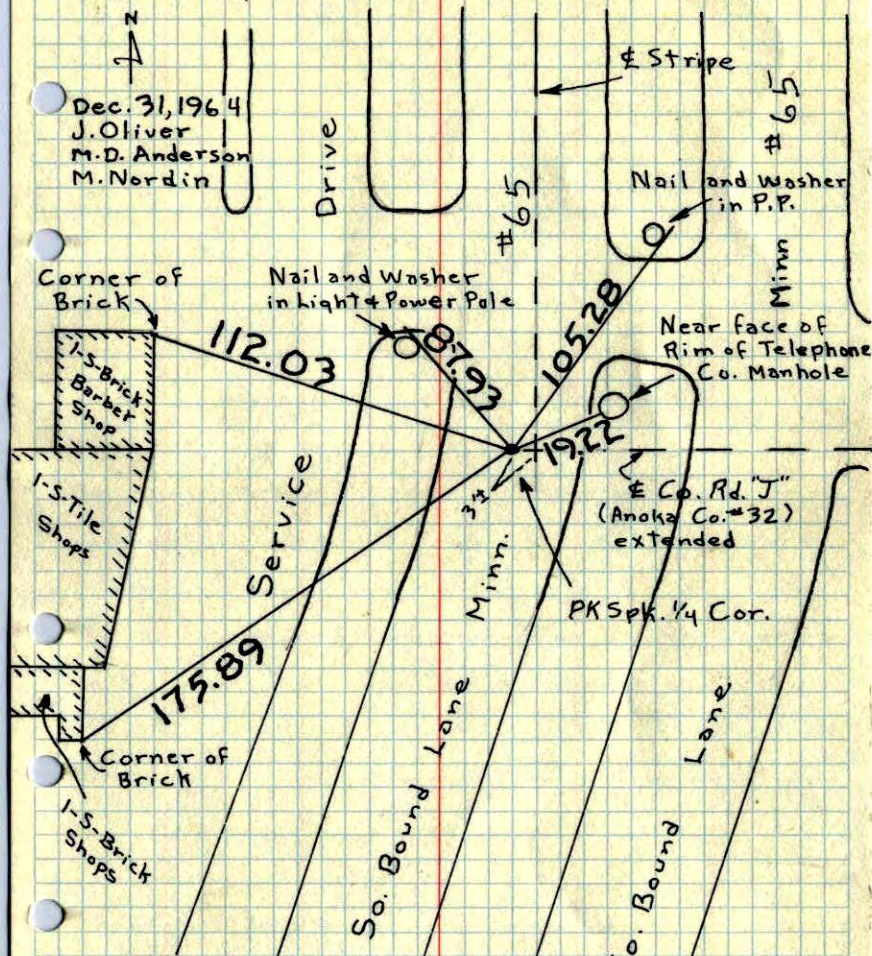


ROLAND W. ANDERSON
 COUNTY SURVEYOR
 ANOKA COUNTY, MINNESOTA

TEMPERATURE CORRECTED
 AND HORIZONTALLY
 TAPED MEASUREMENTS

S 1/4 Cor. Sec. 32, T31, R23

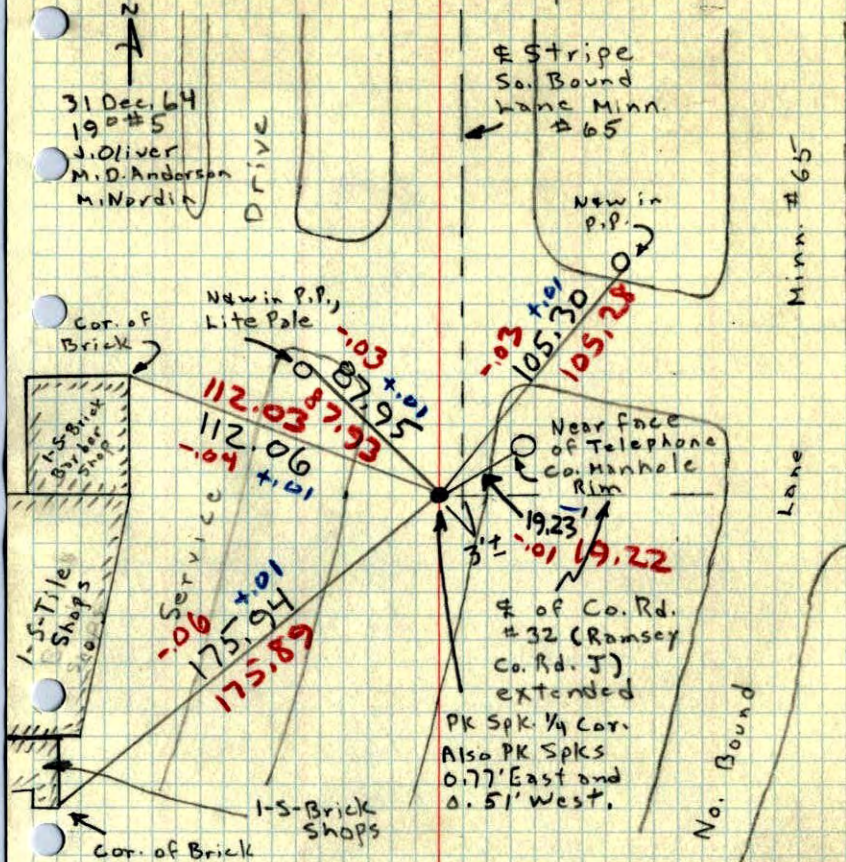
Set PK Spk. From Platting. Also there are PK Spks 0.77' East and 0.51' West.



ROLAND W. ANDERSON COUNTY SURVEYOR ANOKA COUNTY, MINNESOTA
 TEMPERATURE CORRECTED AND HORIZONTALLY TAPED MEASUREMENTS

S 1/4 Cor. Sec. 32, T31, R23

Set PK Spk. from Platting.



ROLAND W. ANDERSON COUNTY SURVEYOR ANOKA COUNTY, MINNESOTA
 TEMPERATURE CORRECTED AND HORIZONTALLY TAPED MEASUREMENTS