

CERTIFICATE OF LOCATION OF GOVERNMENT CORNER
 County of Anoka State of Minnesota

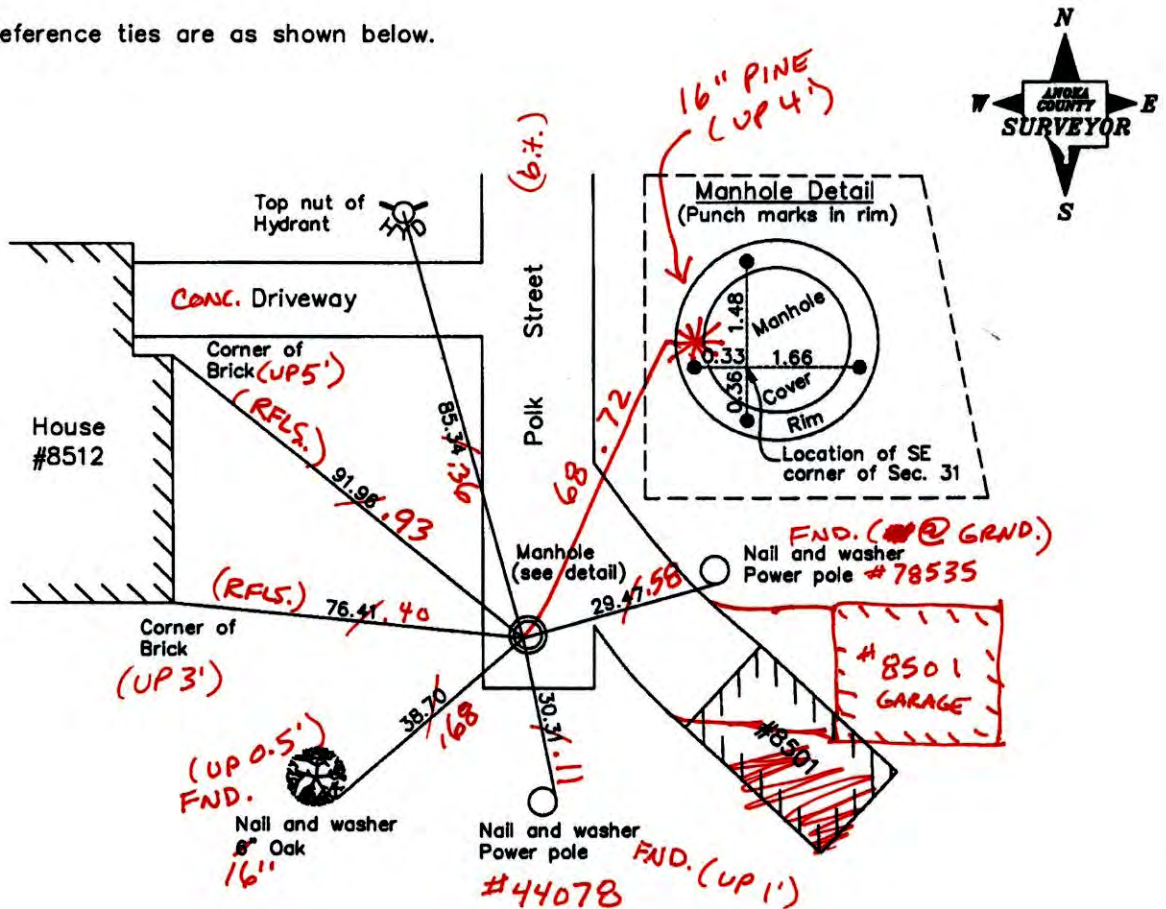
Southeast Corner of Sec. 31 Township 31 Range 23

On the 16th day of June, 1960, the described corner was evidenced by a concrete monument

and to perpetuate the location of said corner, at the exact location thereof, a permanent marker was placed consisting of a location on a manhole cover

AND on the 21st day of August, 2006, said permanent marker was found and the ties were updated

Updated reference ties are as shown below.



7-1-14
 BK-55
 T/T

Revised date	
6/09/95	
7/29/99	
8/21/06	

N.A.D. 1983 Coordinates (1996 Adjustment)	
County Project Coordinates	
Northing	132547.3787
Easting	505401.7991
Date	7/29/99

I hereby certify that this United States public land survey monument record is correct and complete to the best of my knowledge and belief.

Larry D. Holm Date 8/21/06
 Larry D. Holm, Anoka County Surveyor
 Minnesota License Number 18165

CERTIFICATE OF LOCATION OF GOVERNMENT CORNER

County of Anoka

State of Minnesota

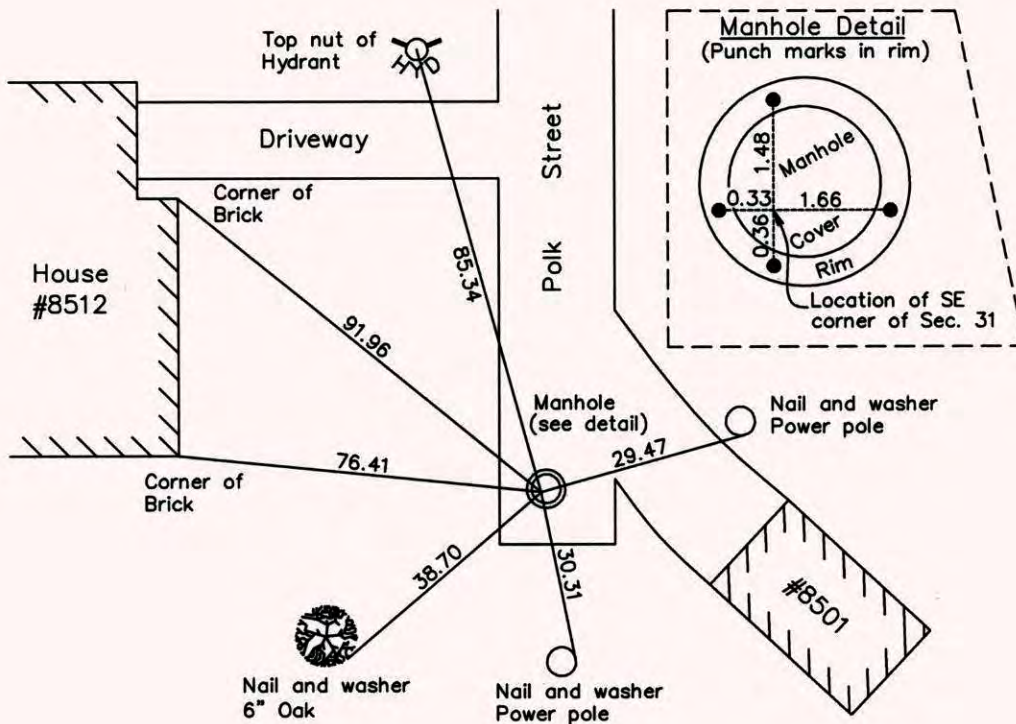
Southeast Corner of Sec. 31 Township 31 Range 23

On the 16th day of June, 1960, the described corner was evidenced by a concrete monument

and to perpetuate the location of said corner, at the exact location thereof, a permanent marker was placed consisting of a location on a manhole cover

AND on the 21st day of August, 2006, said permanent marker was found and the ties were updated

Updated reference ties are as shown below.



Revised date
6/09/95
7/29/99
8/21/06

N.A.D. 1983 Coordinates (1996 Adjustment)	
County Project Coordinates	
Northing	<u>132547.3787</u>
Easting	<u>505401.7991</u>
Date	<u>7/29/99</u>

I hereby certify that this United States public land survey monument record is correct and complete to the best of my knowledge and belief.

Larry D. Hoium Date 8/21/06

Larry D. Hoium, Anoka County Surveyor

Minnesota License Number 18165

CERTIFICATE OF LOCATION OF GOVERNMENT CORNER

County of Anoka

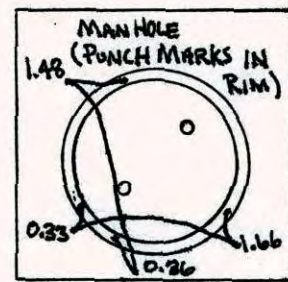
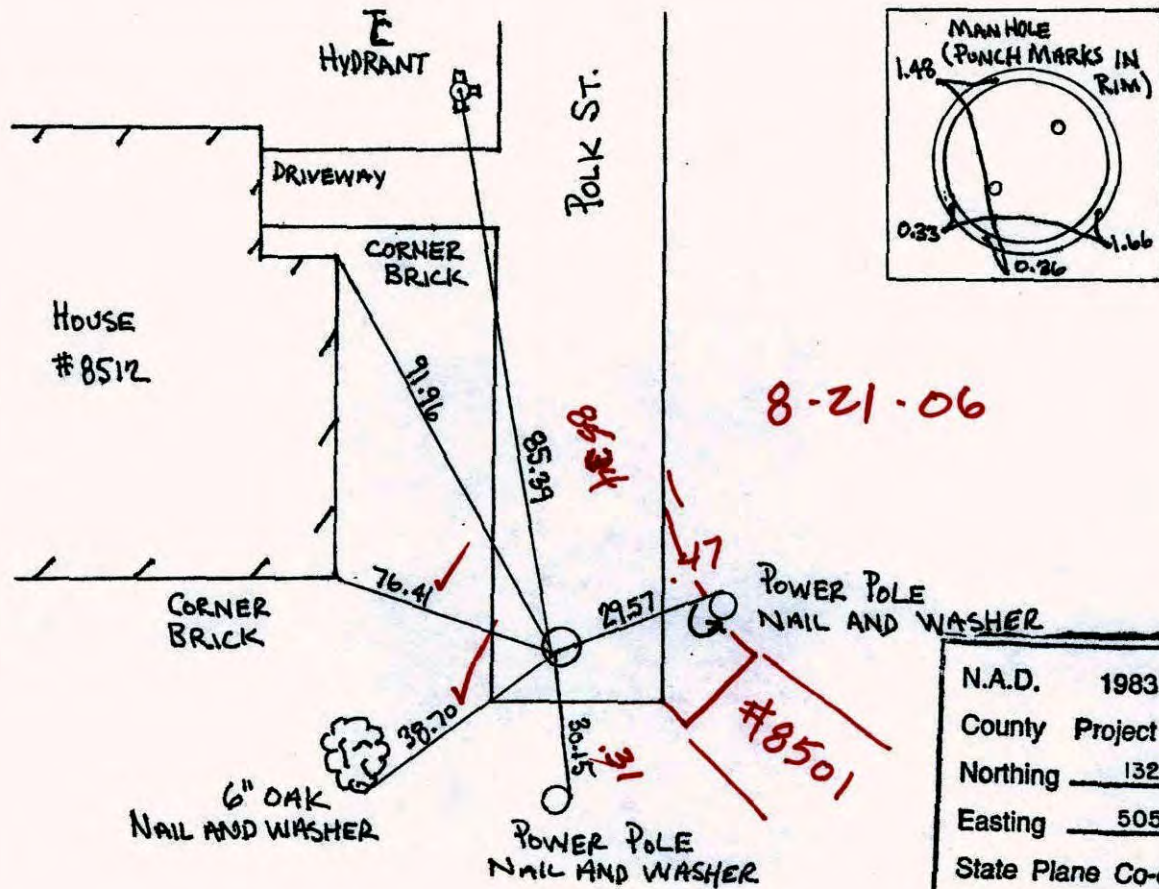
State of Minnesota

SOUTHEAST Corner of Sec. 31 Township 31 Range 23

I hereby certify that on the 16TH day of JUNE, 19 60, I found the described corner which was evidenced by CONCRETE MONUMENT

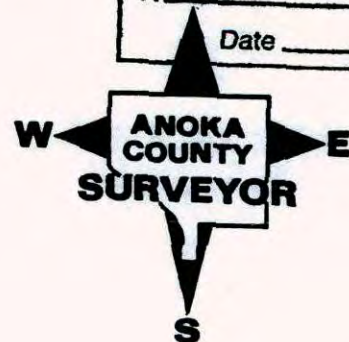
and I further certify that to perpetuate the location of said corner, I did, at the exact location thereof, place a permanent marker consisting of THE CORNER FALLS ON A MANHOLE COVER

which reference or witness monuments are located in the manner following:



N.A.D.	1983	Co-ordinates
County	Project	Co-ordinates
Northing		<u>132547.3787</u>
Easting		<u>505401.7991</u>
State Plane Co-ordinates		
Y		_____
X <u>N</u>		_____
Date _____		

Revised date	Revised date	Revised date
9-1-67	5-30-86	
7-29-68	6-21-90	
9-23-71	6-9-95	
5-27-75	7-29-99	
8-15-77		
6-17-80		
6-30-83		



CERTIFICATE OF LOCATION OF GOVERNMENT CORNER

County of Anoka

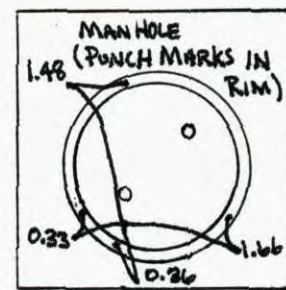
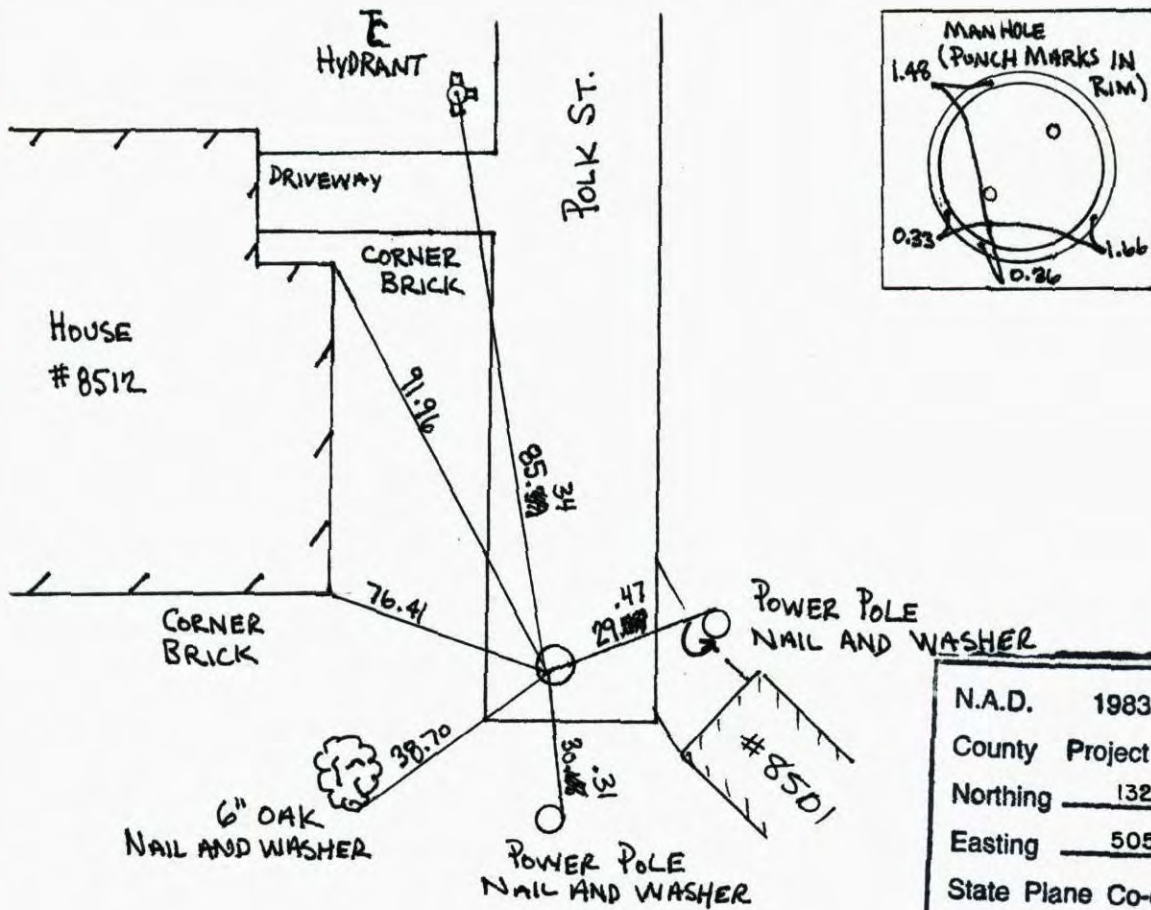
State of Minnesota

SOUTHEAST Corner of Sec. 31 Township 31 Range 23

I hereby certify that on the 16TH day of JUNE, 19 60, I found the described corner which was evidenced by CONCRETE MONUMENT

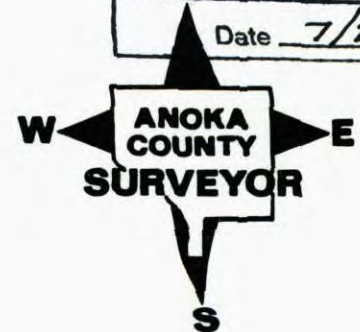
and I further certify that to perpetuate the location of said corner, I did, at the exact location thereof, place a permanent marker consisting of THE CORNER FALLS ON A MANHOLE COVER

which reference or witness monuments are located in the manner following:



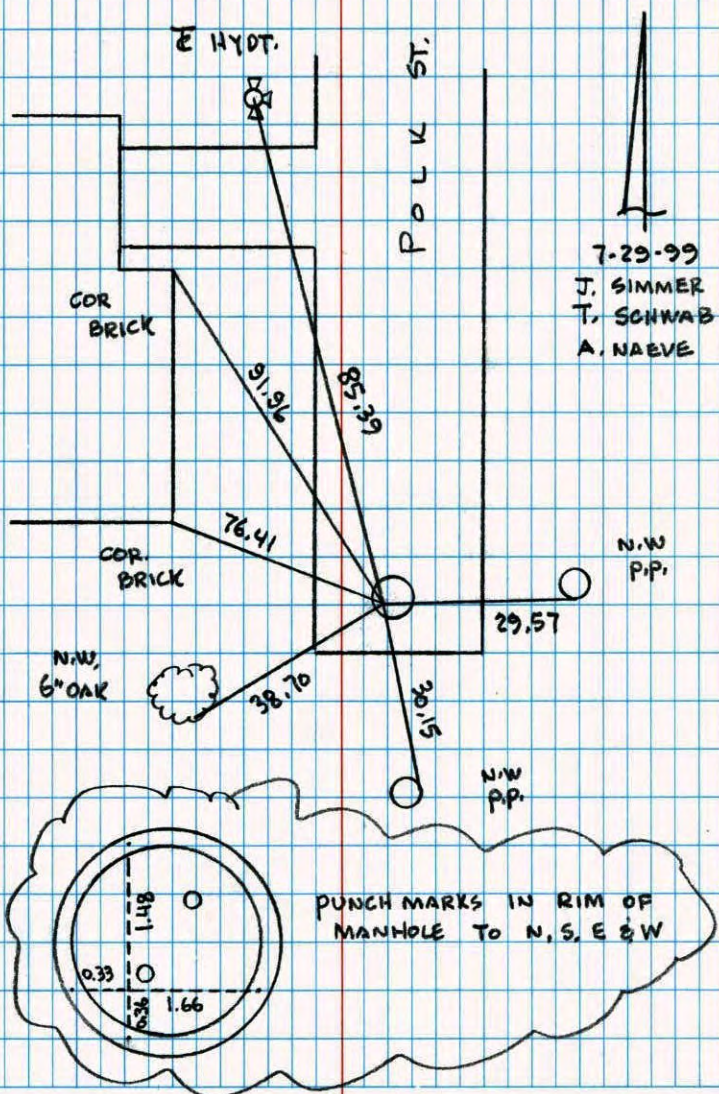
N.A.D.	1983	Co-ordinates
County	Project	Co-ordinates
Northing		<u>132547.3787</u>
Easting		<u>505401.7991</u>
State Plane Co-ordinates		
Y _____		
X <u>N</u> _____		
Date		<u>7/29/99</u>

Revised date	Revised date	Revised date
9-1-67	5-30-86	
7-29-68	6-21-90	
9-23-71	6-9-95	
5-27-75	7-29-99	
8-15-77	8-21-06	
6-17-80		
4-30-83		



SE. COR SEC 31 T31 R23

RETIED COR. LOCATION ON
MANHOLE COVER.



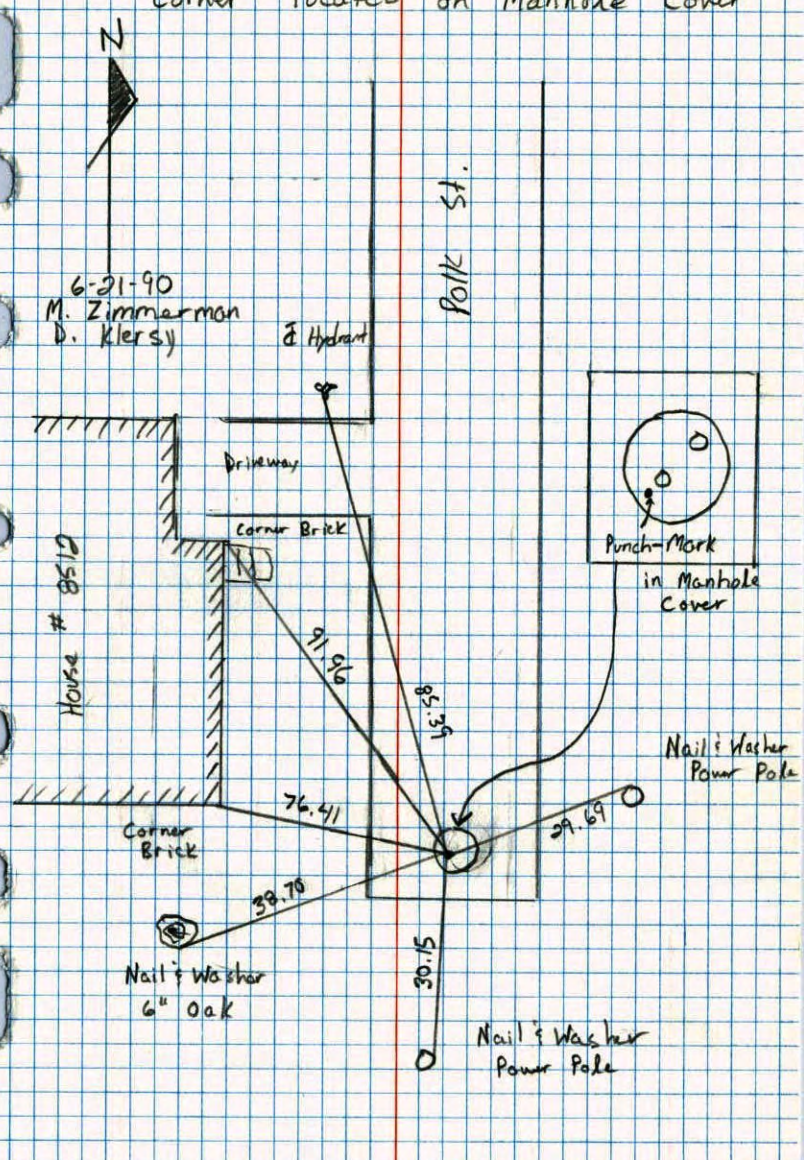
7-29-99
J. SIMMER
T. SCHWAB
A. NAEVE

PUNCH MARKS IN RIM OF
MANHOLE TO N, S, E & W

1.18
0.33
0.36
1.66

Southeast Corner Sec. 31 T31 R23

Corner located on Manhole Cover



6-21-90
M. Zimmerman
D. Klersy

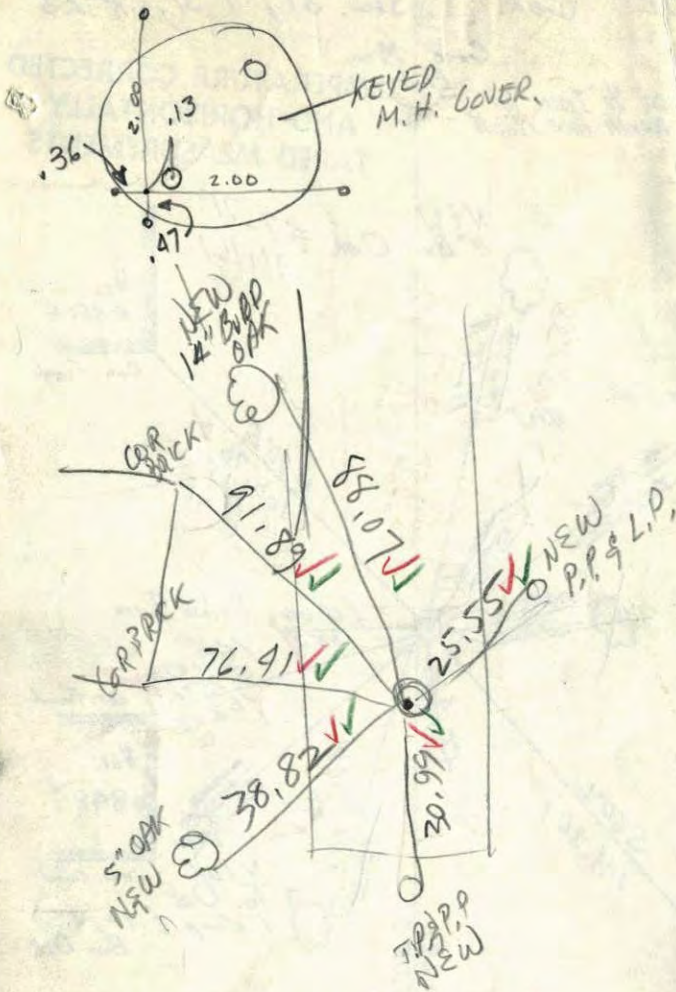
Punch-Mark
in Manhole
Cover

Nail & Washer
Power Pole

Nail & Washer
6" Oak

Nail & Washer
Power Pole

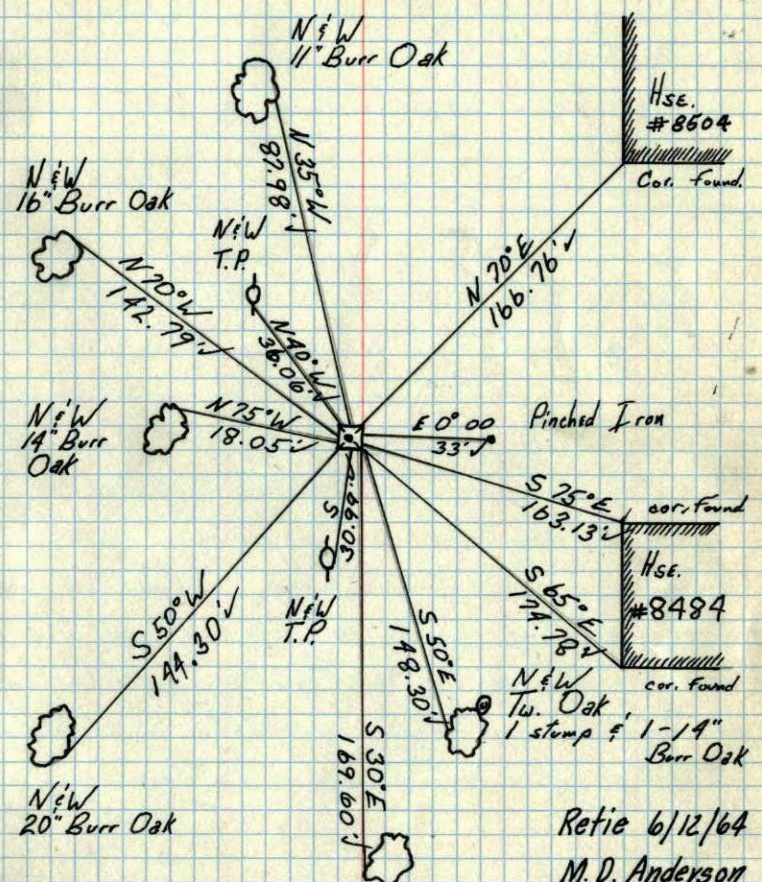
SE Cor. Sec. 31-T31-R23



#7-760 ✓

SE Cor. Sec. 31, T31, R23

Conc. Mon. flush TEMPERATURE CORRECTED AND HORIZONTALLY TAPED MEASUREMENTS
Placed 1/2" Iron on North face flush



6/17/60
Dennis Potter
Ralph Robinson

ROLAND W. ANDERSON
COUNTY SURVEYOR
ANOKA COUNTY, MINNESOTA

Retie 6/12/64
M.D. Anderson
R. Carlson

SE Cor. Sec. 31, T31, R23

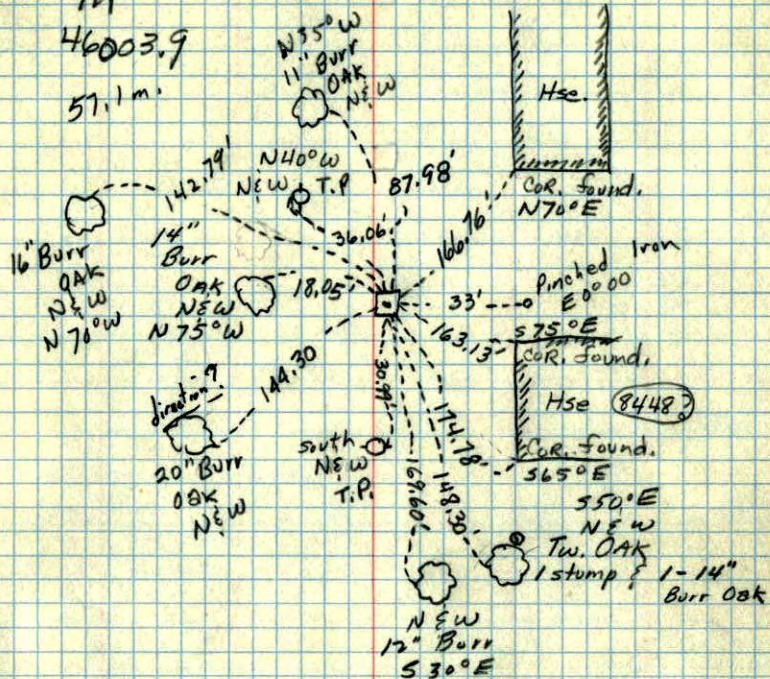
6/17/60

Concrete Mon.
Flush

IN

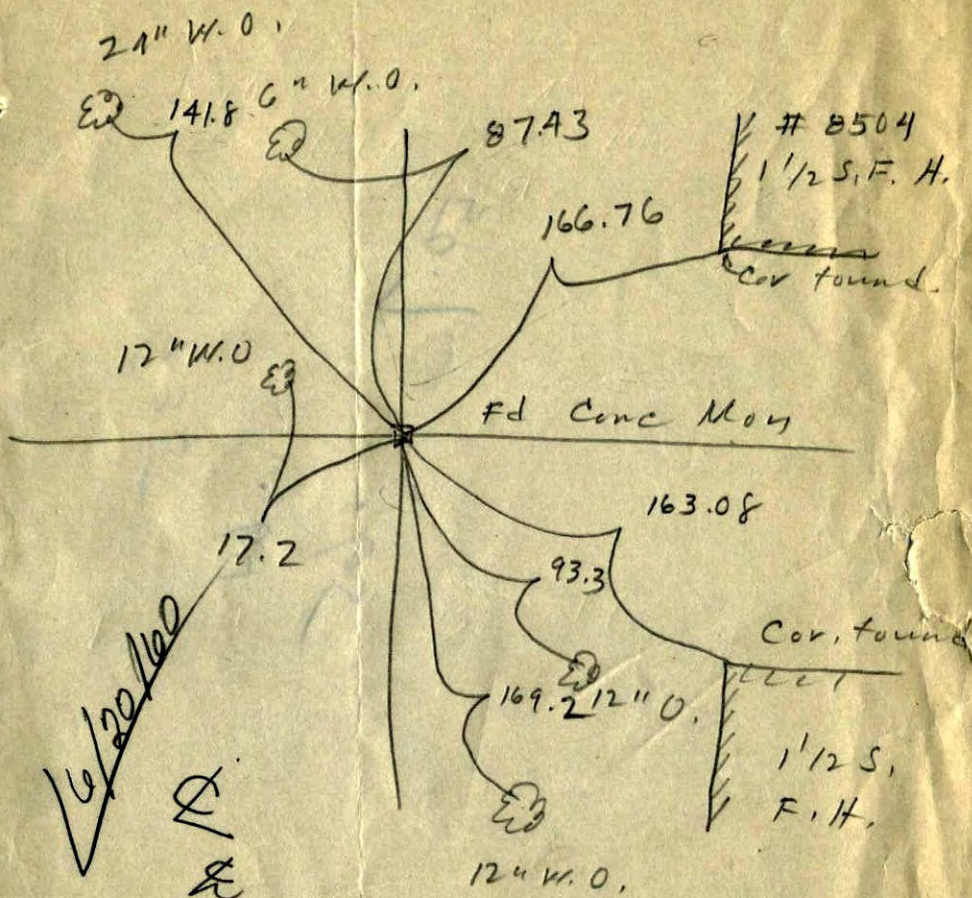
46003.9

57.1 m.



6/20/60

S ~~W~~ E Cor of Sec 31 T31 R23



DRAIN TILE • SEWER PIPE • CATTLE PASS • CRIBBING

Suburban Eng. Co.