

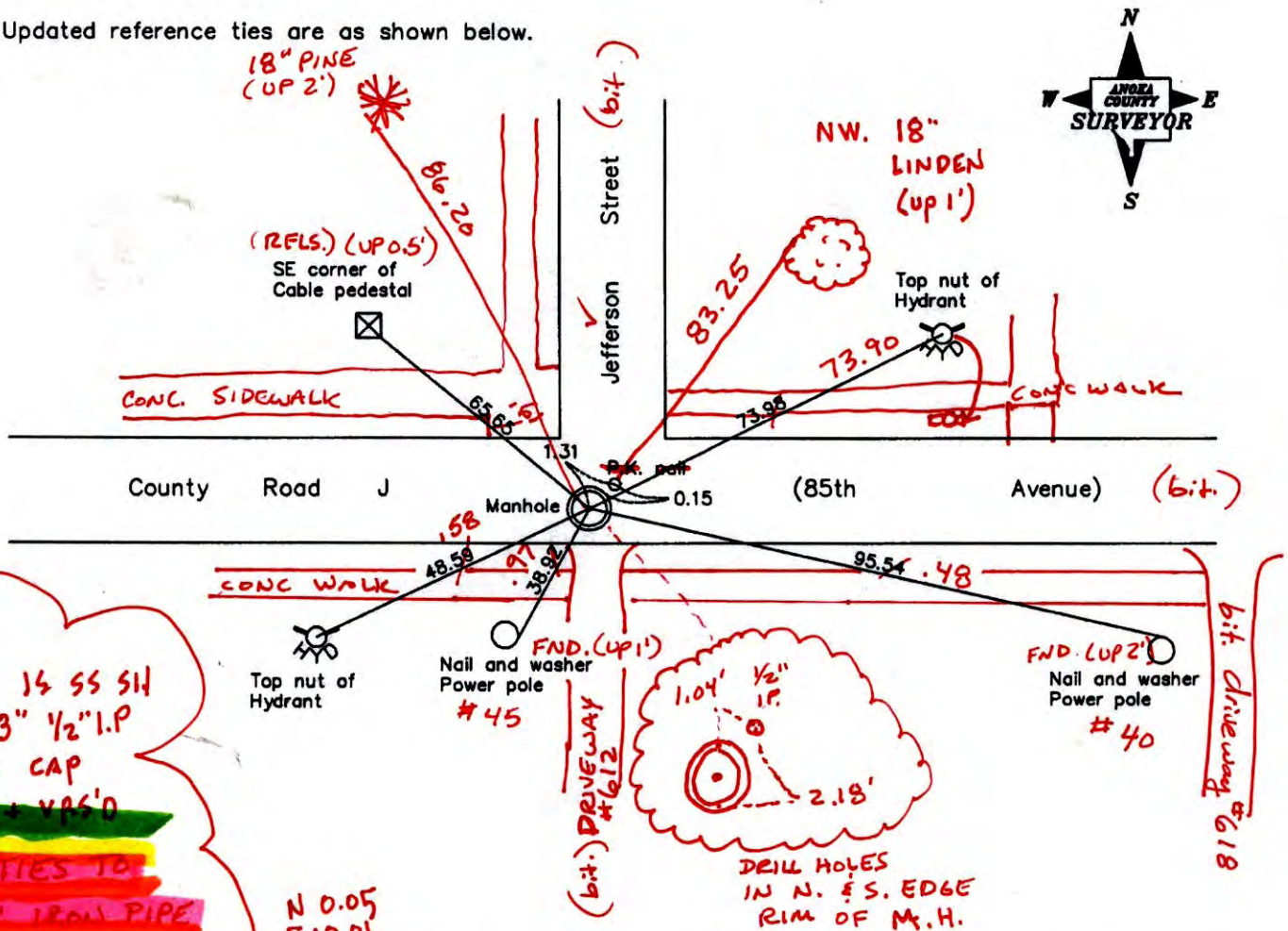
CERTIFICATE OF LOCATION OF GOVERNMENT CORNER
 County of Anoka State of Minnesota
 South 1/4 Corner of Sec. 31 Township 31 Range 23

On the 28th day of June, 1960, the described corner was evidenced by a broken off concrete monument

and to perpetuate the location of said corner, at the exact location thereof, a permanent marker was placed consisting of a P.K. nail 1.31 feet northeast of the center of a manhole cover
 P.K. GONE / RESET

AND on the 21st day of August, 2006, said permanent marker was found and the ties were updated

Updated reference ties are as shown below.



7-8-14 14 SS SH
 SET 3" 1/2" I.P.
 W/ AC CAP
 RETIRED + VAS'D
 * ALL TIES TO
 1/2" IRON PIPE
 Revised date

6/09/95
7/29/99
8/21/06

N.A.D. 1983 Coordinates (1996 Adjustment)

County Project Coordinates	
Northing	132550.5204
Easting	502764.0269
Date	7/29/99

I hereby certify that this United States public land survey monument record is correct and complete to the best of my knowledge and belief.

Larry D. Holm Date 8/21/06
 Larry D. Holm, Anoka County Surveyor
 Minnesota License Number 18165

300 = 0.05
 N: 132550.5607
 E: 502763.9972

CERTIFICATE OF LOCATION OF GOVERNMENT CORNER

County of Anoka

State of Minnesota

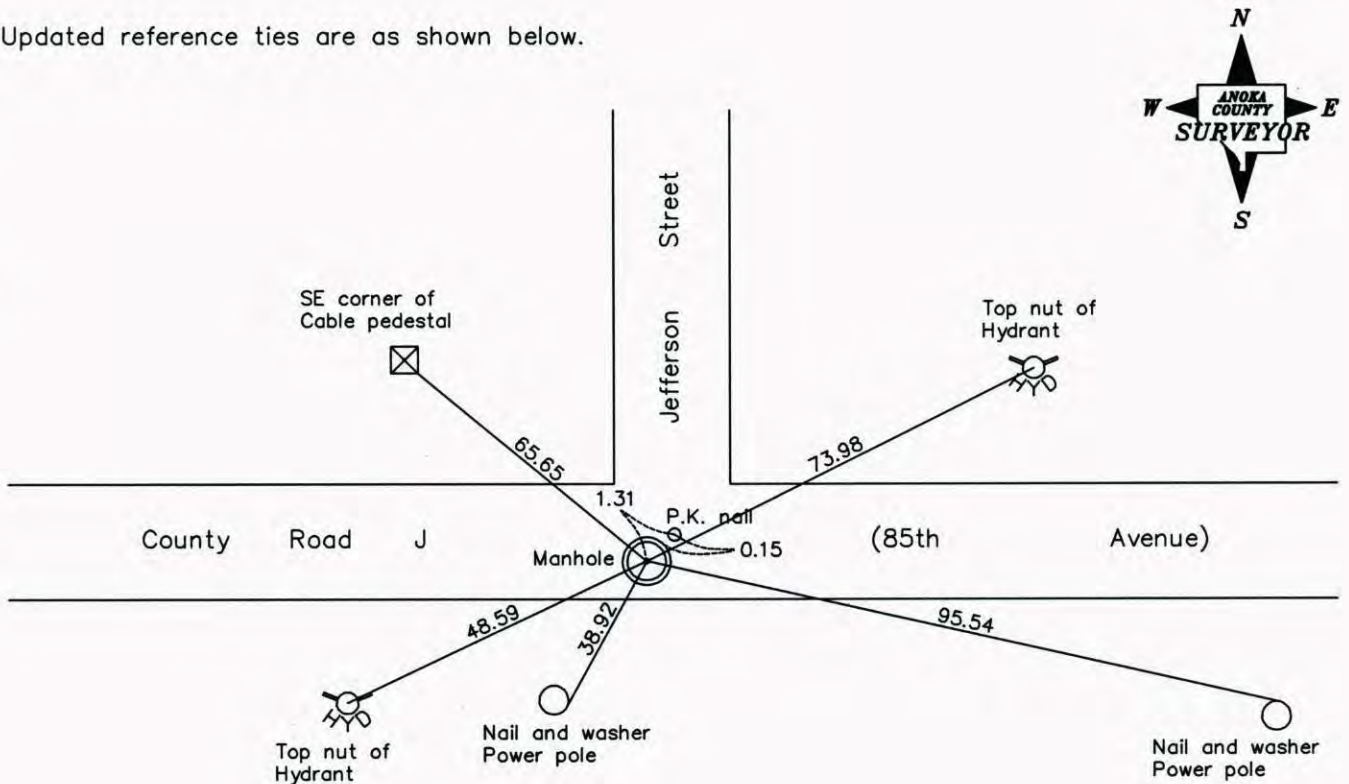
South 1/4 Corner of Sec. 31 Township 31 Range 23

On the 28th day of June, 1960, the described corner was evidenced by a broken off
concrete monument

and to perpetuate the location of said corner, at the exact location thereof, a permanent marker
was placed consisting of a P.K. nail 1.31 feet northeast of the center of a manhole cover

AND on the 21st day of August, 2006, said permanent marker was found and the ties were
updated

Updated reference ties are as shown below.



Revised date
6/09/95
7/29/99
8/21/06

N.A.D. 1983 Coordinates (1996 Adjustment)	
County Project Coordinates	
Northing	132550.5204
Easting	502764.0269
Date	7/29/99

I hereby certify that this United States public land survey monument record is correct and complete to the best of my knowledge and belief.

Date 8/21/06
Larry D. Hoium, Anoka County Surveyor
 Minnesota License Number 18165

CERTIFICATE OF LOCATION OF GOVERNMENT CORNER

County of Anoka

State of Minnesota

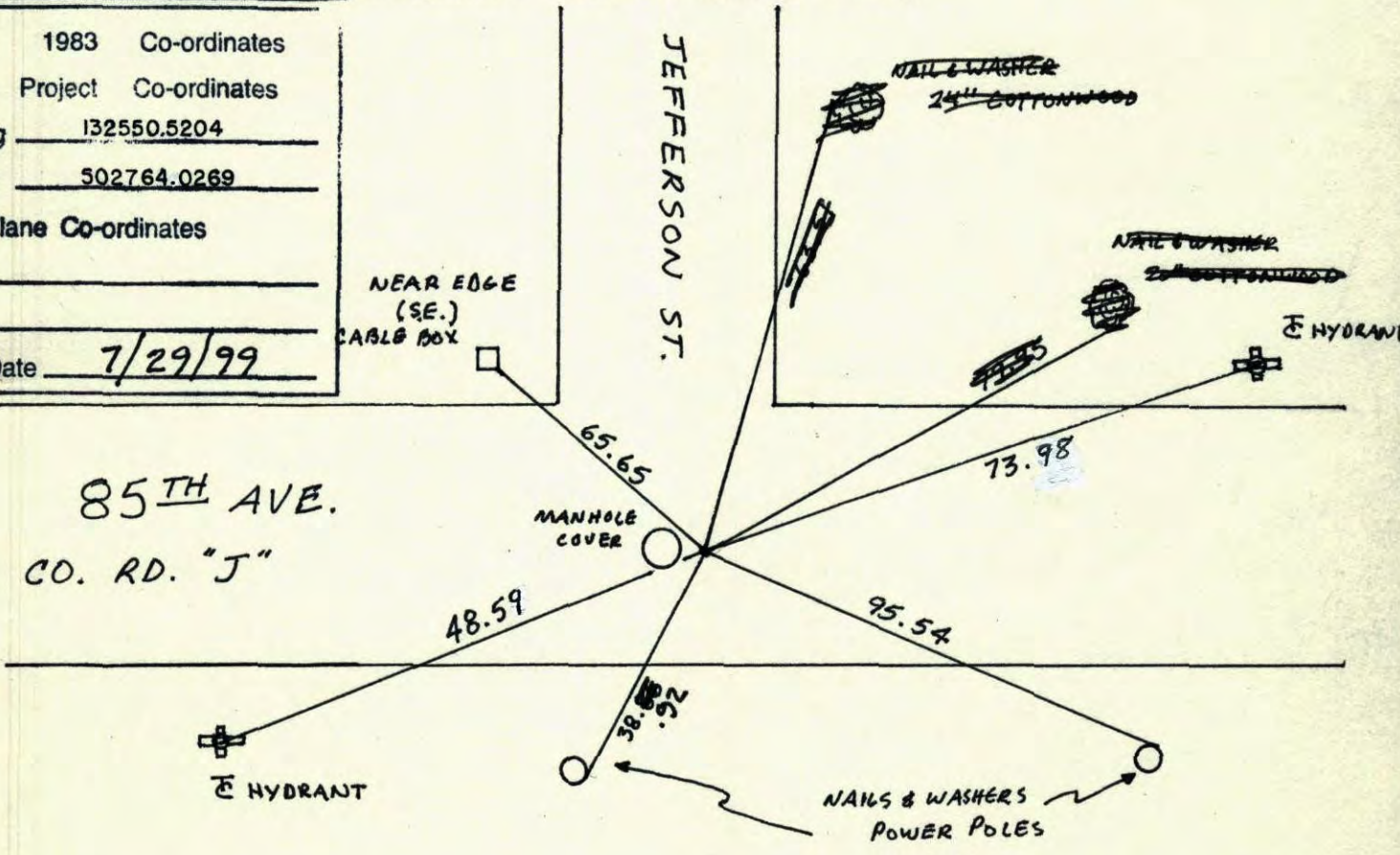
South 1/4 Corner of Sec. 31 Township 31 Range 23

I hereby certify that on the 28 day of JUNE, 1960, I found the described corner which was evidenced by CONCRETE MONUMENT BROKEN OFF

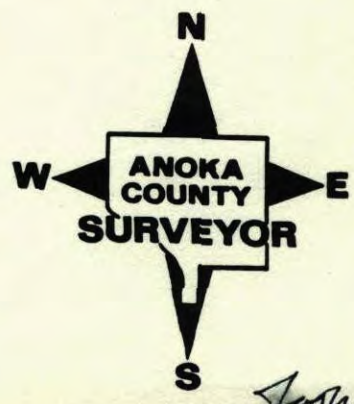
and I further certify that to perpetuate the location of said corner, I did, at the exact location thereof, place a permanent marker consisting of P.K. NAIL ^{0.15'} ~~2.25'~~ ~~EAST~~ ^{NORTHEAST} OF MANHOLE;
1.31' ~~1.31'~~ FROM CENTER OF MANHOLE COVER

which reference or witness monuments are located in the manner following:

N.A.D.	1983	Co-ordinates
County	Project	Co-ordinates
Northing	<u>132550.5204</u>	
Easting	<u>502764.0269</u>	
State Plane Co-ordinates		
Y	_____	
X	_____	
Date	<u>7/29/99</u>	



Revised date	Revised date	Revised date
<u>5-30-86</u>		
<u>7-17-90</u>		
<u>6-9-95</u>		
<u>7-29-99</u>		
<u>8-21-06</u>		



Josh Anderson

CERTIFICATE OF LOCATION OF GOVERNMENT CORNER

County of Anoka

State of Minnesota

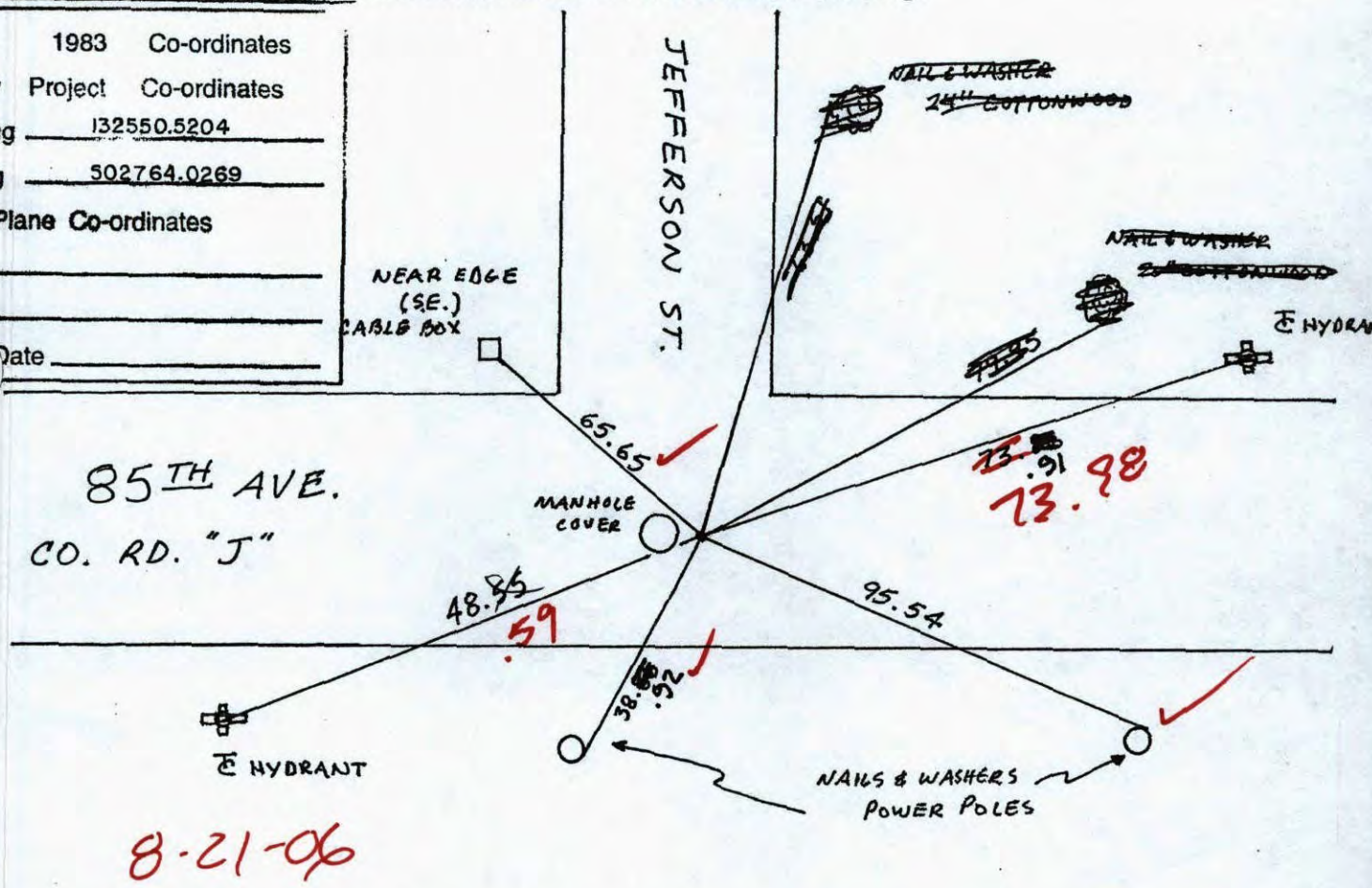
South 1/4 Corner of Sec. 31 Township 31 Range 23

I hereby certify that on the 28 day of JUNE, 1960, I found the described corner which was evidenced by CONCRETE MONUMENT BROKEN OFF

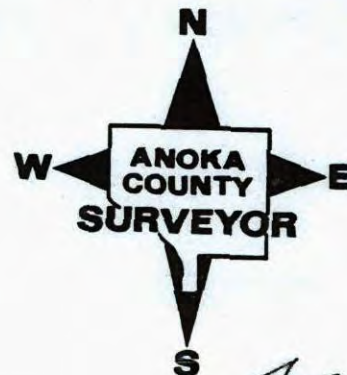
and I further certify that to perpetuate the location of said corner, I did, at the exact location thereof, place a permanent marker consisting of P.K. NAIL ~~0.15'~~ ^{0.15'} ~~EAST~~ ^{NORTHEAST} OF MANHOLE;
1.31' ~~1.31'~~ FROM CENTER OF MANHOLE COVER

which reference or witness monuments are located in the manner following:

N.A.D.	1983	Co-ordinates
County Project		Co-ordinates
Northing	<u>132550.5204</u>	
Easting	<u>502764.0269</u>	
State Plane Co-ordinates		
Y	_____	
X	_____	
Date	_____	



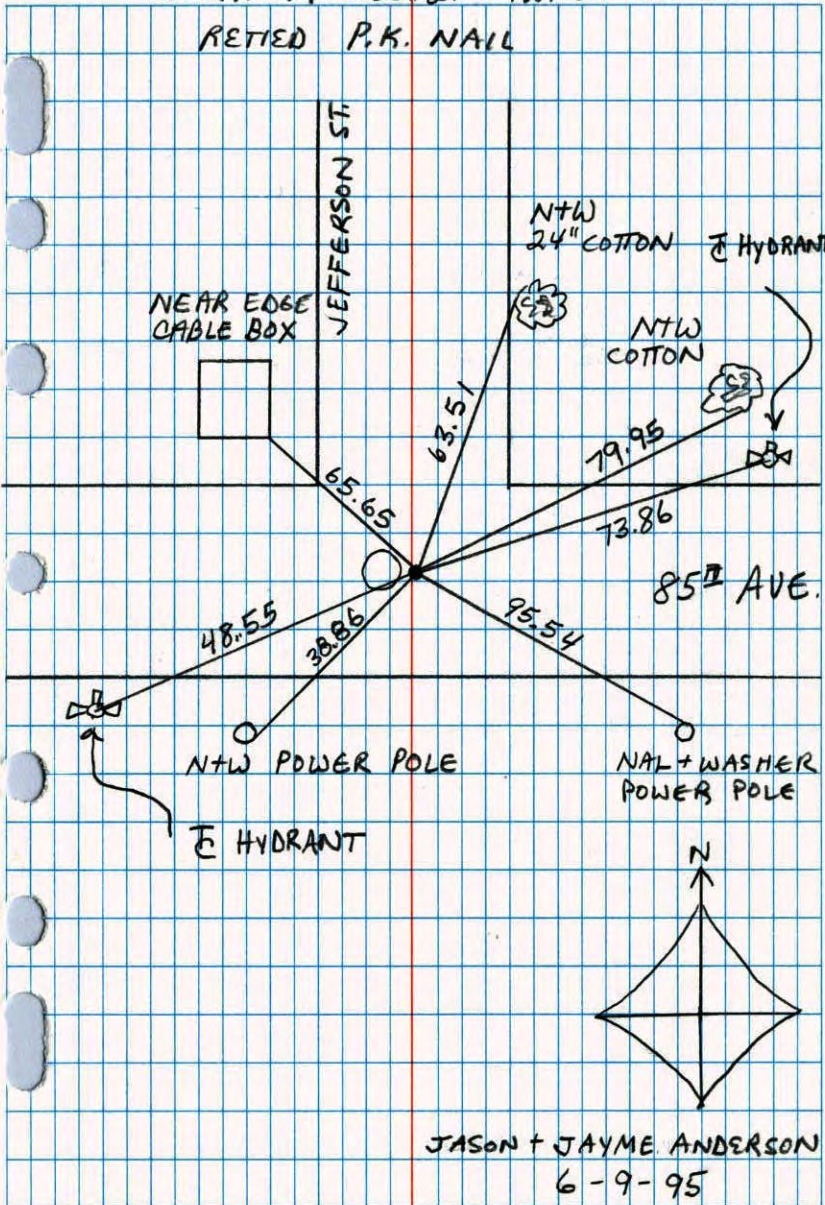
Revised date	Revised date	Revised date
5-30-86		
7-17-90		
6-9-95		
7-29-99		



Josh Anderson

SOUTH 1/4 SEC. 31 TW. 31 R. 23

RETIED P.K. NAIL

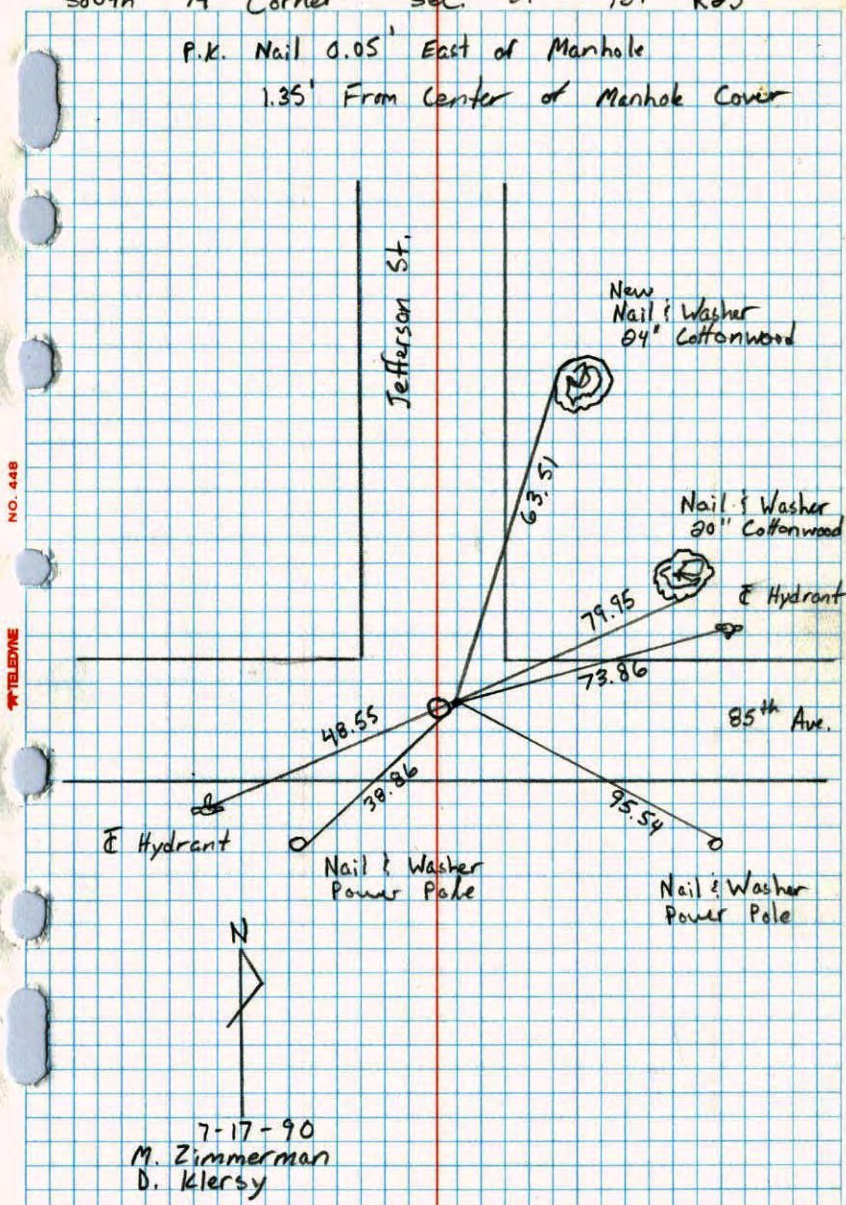


JASON + JAYME ANDERSON
6-9-95

South 1/4 Corner Sec. 31 T31 R23

P.K. Nail 0.05' East of Manhole

1.35' From Center of Manhole Cover



7-17-90
M. Zimmerman
D. Klerby

1/4 Cor. Sec. 31, T31, R23

out

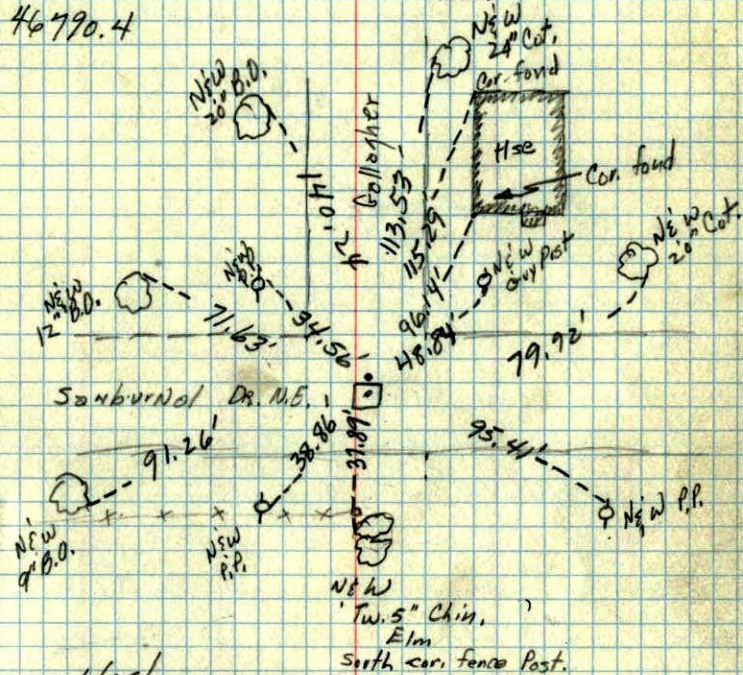
46760.1

Con. Mon. broken, off down 0.2'
placed Iron Pipe to North

in

46790.4

top part was in hole also
pvt back in hole when
filled

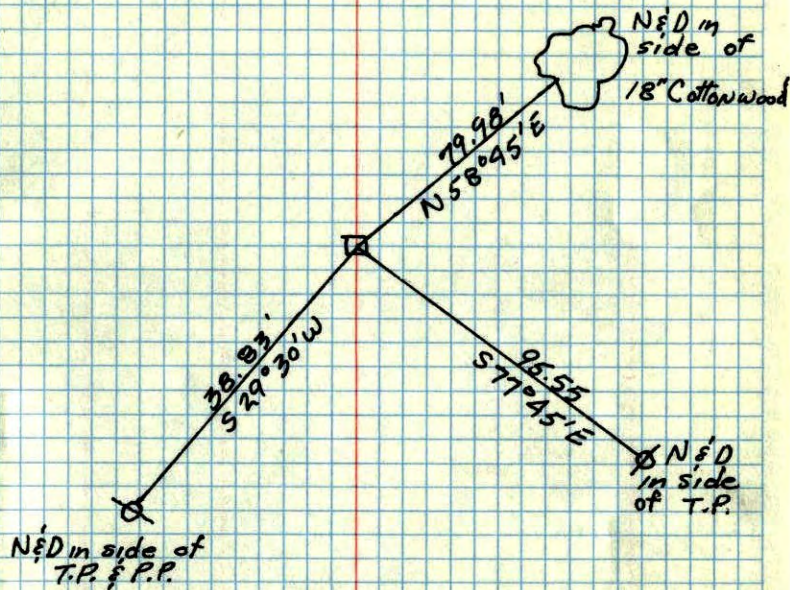


6/28/60

12/7/60
RR

1/4 COR. SEC. 31, T31, R23

Decapitated conc. mon. 0.2'
below surface. Center
obtained by straddles with
flats along the parallel
sides

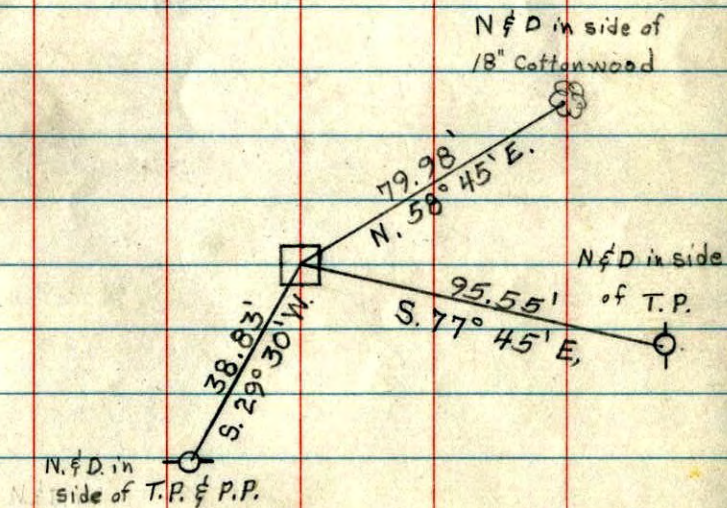


Magnetic Compass Readings
with Transit. June 23, 1959

W. Grossendorf
C. Palmgren
P. Fausch
J. Forichette

Tie s $\frac{1}{4}$ cor., Sect. 31, T31N,
R23W.

Decapitated conc. mon. 0.2' below
surface. Center obtained by
straddles with flats along the
parallel sides.



Magnetic Compass Readings with Transit.

T, June 23, 1959

W. Grussendorf

C. Palmgren

P. Fausch

J. Forichette