

CERTIFICATE OF LOCATION OF GOVERNMENT CORNER  
 County of Anoka State of Minnesota

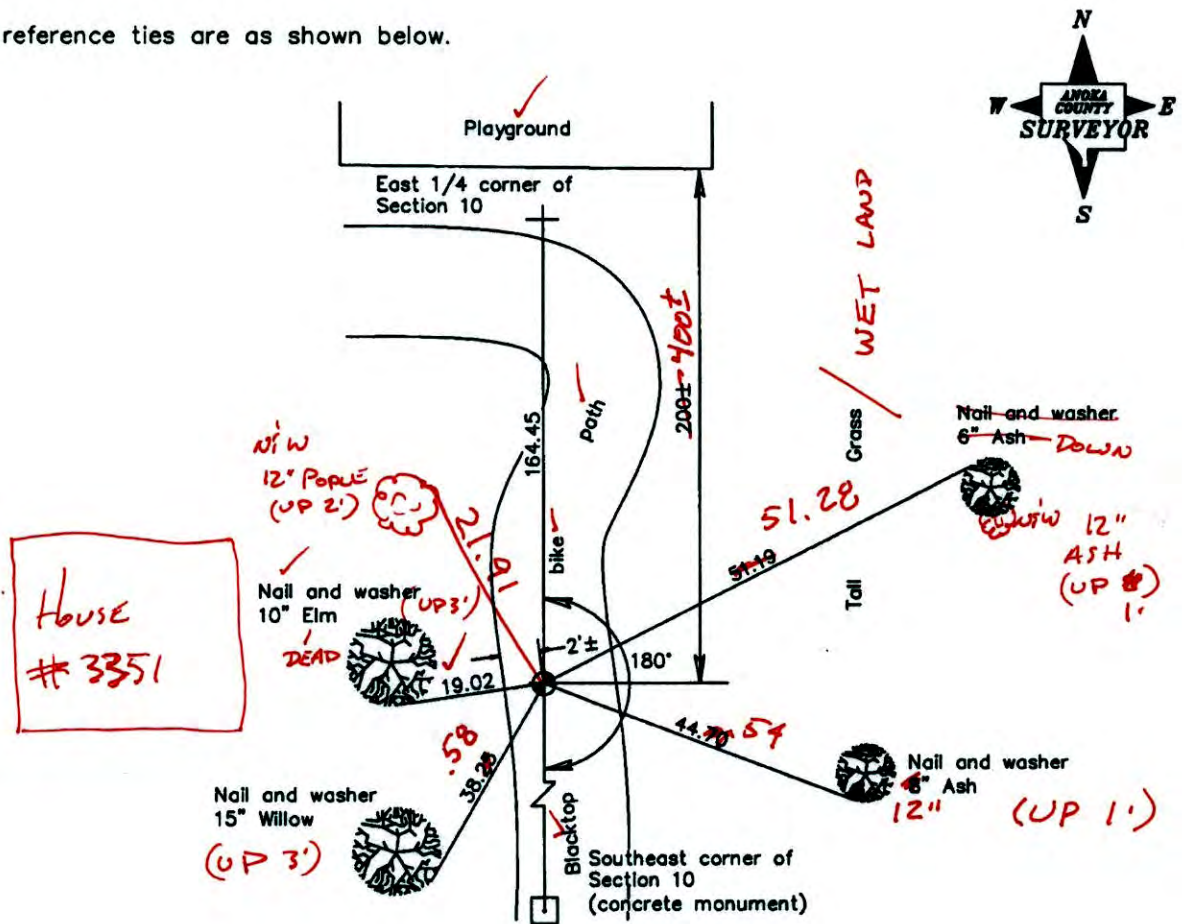
Witness Corner of Sec. 10 Township 31 Range 23  
 (on east line of Southeast Quarter)

On the 15th day of June, 2006, the described corner was evidenced by area resurvey

and to perpetuate the location of said corner, at the exact location thereof, a permanent marker was placed consisting of a cast iron monument (FLUSH IN CONC.)  
 2' +/- FROM THE WEST EDGE OF BIT PATH

AND on the \_\_\_ day of \_\_\_, \_\_\_, said permanent marker was

Updated reference ties are as shown below.



BK-S14  
 5-15-14  
 TAPED

Revised date

6/15/06

N.A.D. 1983 Coordinates  
 (1996 Adjustment)

County Project Coordinates	
Northing	156069.6710
Easting	521424.1197
Date	6/15/06

I hereby certify that this United States public land survey monument record is correct and complete to the best of my knowledge and belief.

*Larry D. Holm* Date 6/15/06

Larry D. Holm, Anoka County Surveyor  
 Minnesota License Number 18165

N = 156069.6169

E = 521424.0391

3D=0.05

# CERTIFICATE OF LOCATION OF GOVERNMENT CORNER

County of Anoka

State of Minnesota

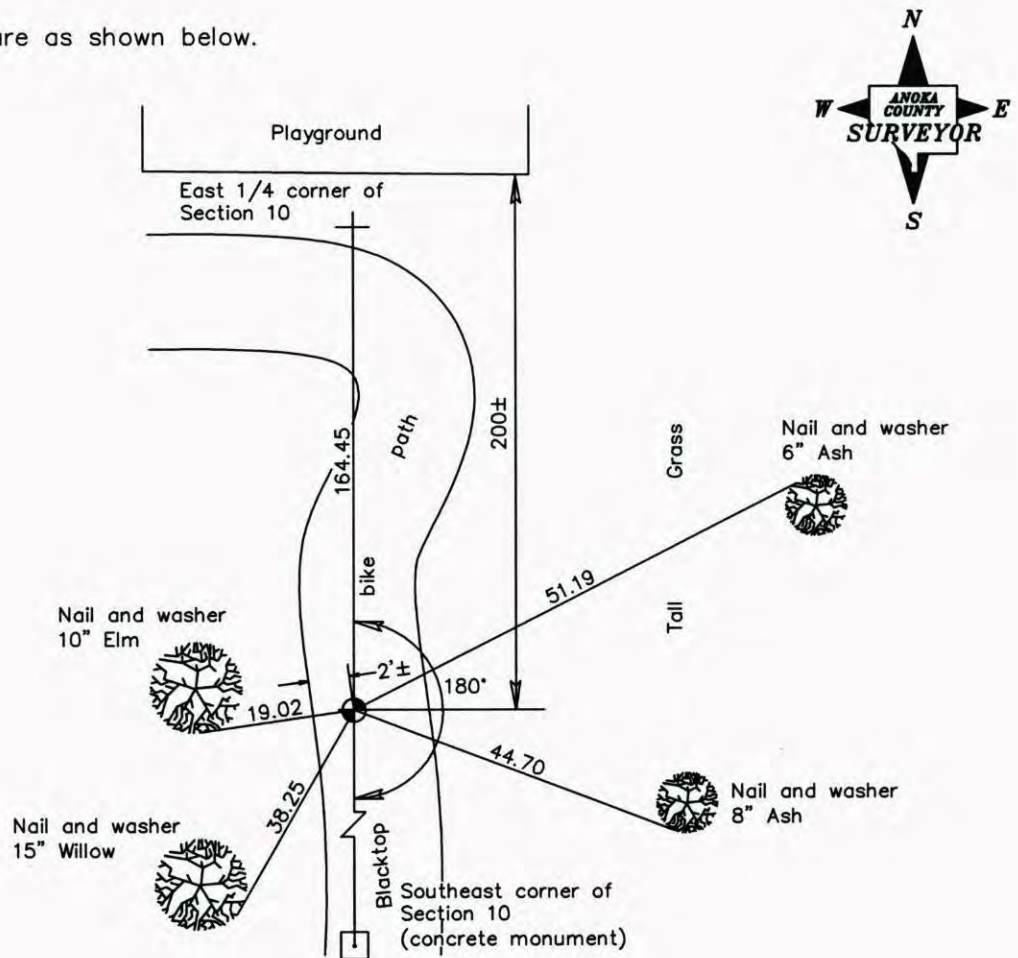
Witness Corner of Sec. 10 Township 31 Range 23  
 (on east line of Southeast Quarter)

On the 15th day of June, 2006, the described corner was evidenced by area resurvey

and to perpetuate the location of said corner, at the exact location thereof, a permanent marker was placed consisting of a cast iron monument

AND on the \_\_\_ day of \_\_\_\_\_, \_\_\_\_\_, said permanent marker was \_\_\_\_\_

Updated reference ties are as shown below.



Revised date
6/15/06

N.A.D. 1983 Coordinates (1996 Adjustment)	
County Project Coordinates	
Northing	156069.6710
Easting	521424.1197
Date	6/15/06

I hereby certify that this United States public land survey monument record is correct and complete to the best of my knowledge and belief.

*Larry D. Hoium* Date 6/15/06

Larry D. Hoium, Anoka County Surveyor

Minnesota License Number 18165

# CERTIFICATE OF LOCATION OF GOVERNMENT CORNER

County of Anoka

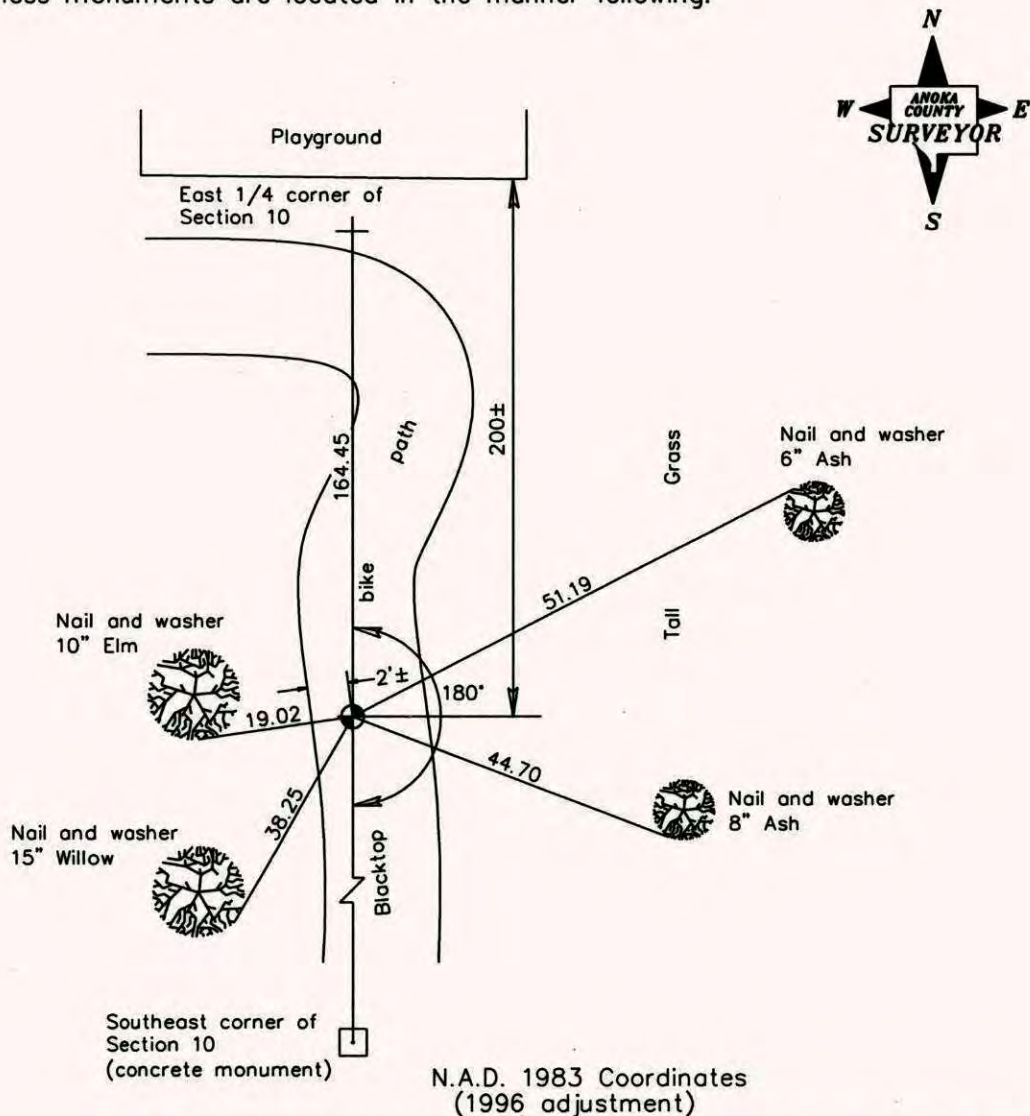
State of Minnesota

Witness Corner of Sec. 10 Township 31 Range 23  
 (on east line of southeast quarter)

I hereby certify that on the 15th day of June, 2006, I found the described corner which was evidenced by area resurvey

and I further certify that to perpetuate the location of said corner, I did, at the exact location thereof, place a permanent marker consisting of a cast iron monument

which reference or witness monuments are located in the manner following:



Revised date

6/15/06

N.A.D. 1983 Coordinates  
(1996 adjustment)

County Project Coordinates
Northing <u>156069.6710</u>
Easting <u>521424.1197</u>

State Plane Coordinates
Y _____
X _____

Date 6/15/06

WITNESS

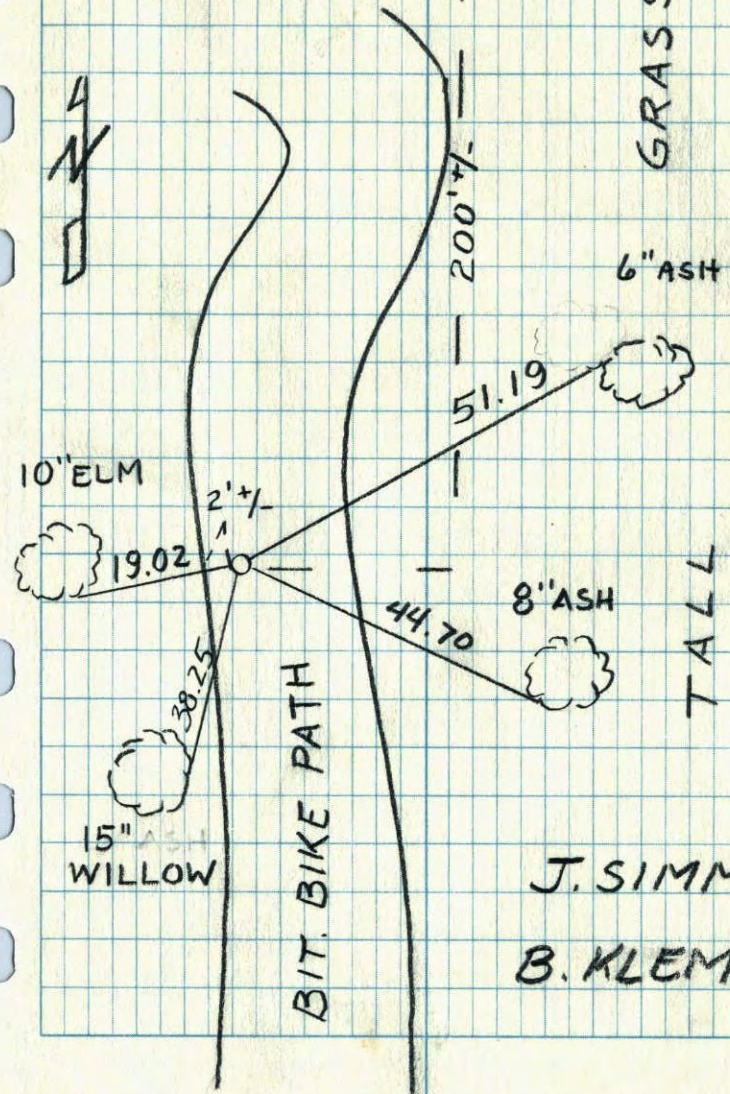
EAST 1/4 SEC 10 T-31 R-23

35  
138

PLAYGROUND

SET CAST  
IRON MON.

6-15-06



J. SIMMER

B. KLEMZ