

# CERTIFICATE OF LOCATION OF GOVERNMENT CORNER

County of Anoka

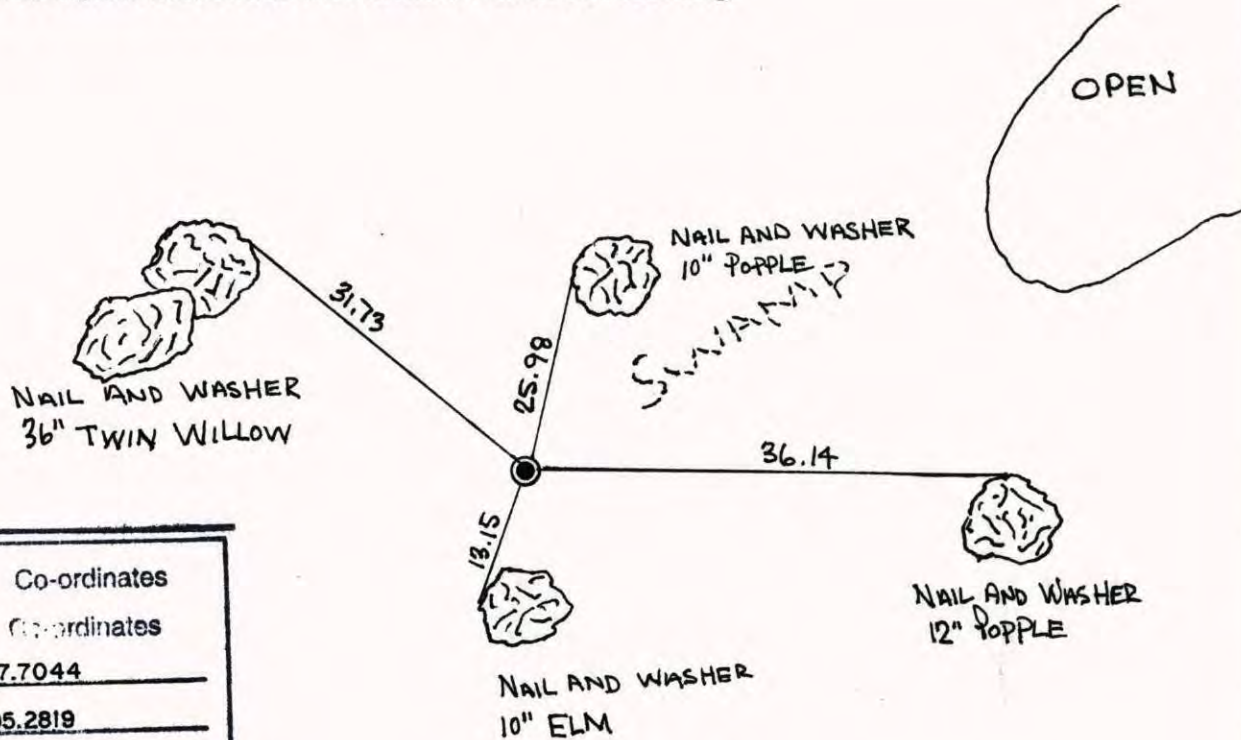
State of Minnesota

EAST 1/4 Corner of Sec. 4 Township 31 Range 23

I hereby certify that on the \_\_\_ day of \_\_\_\_\_, 19 \_\_\_, I found the described corner which was evidenced by CARLEY IRON

and I further certify that to perpetuate the location of said corner, I did, at the exact location thereof, place a permanent marker consisting of CAST IRON MONUMENT

which reference or witness monuments are located in the manner following:



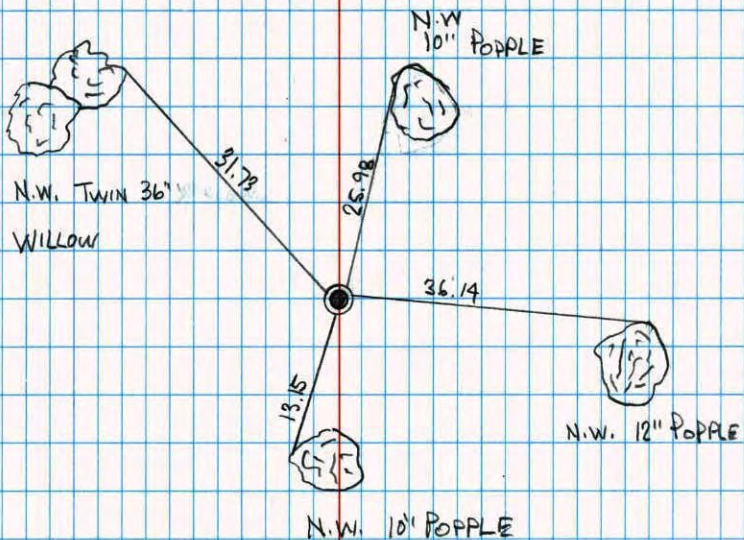
N.A.D.	1983	Co-ordinates
County	Project	Co-ordinates
Northing	<u>161697.7044</u>	
Easting	<u>516205.2819</u>	
State Plane Co-ordinates		
Y	_____	
X	_____	
Date	<u>11/15/99</u>	

Revised date	Revised date	Revised date
<u>4-11-80</u>		
<u>WET 86</u>		
<u>11-29-99</u>		



EAST 1/4 SEC. 4, T. 31, R. 23

RETIED DURING BLAINE C.S.P.S.



11-29-99

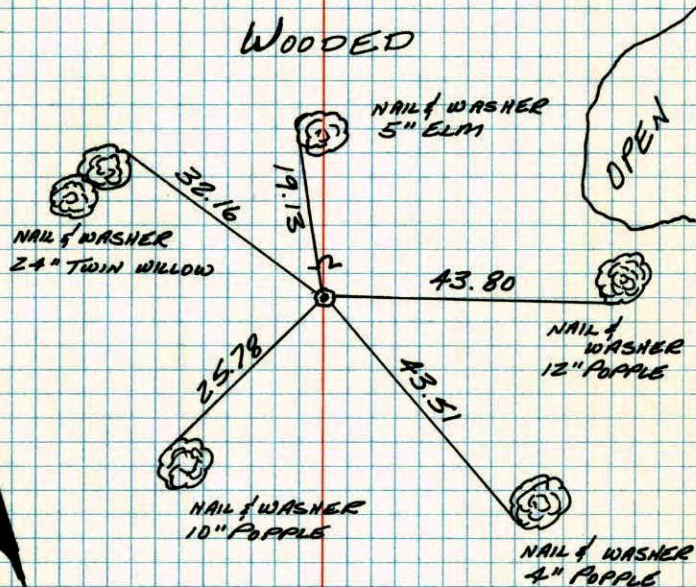
J. SIMMER

T. SCHWAB



E 1/4 CORNER SECTION 4-T31-R23

RESET CORNER TO ITS ORIGINAL PLACE WHEN FIRST FOUND. SET CAST IRON MONUMENT FLUSH WITH SIGN AND POST ON NORTH SIDE.



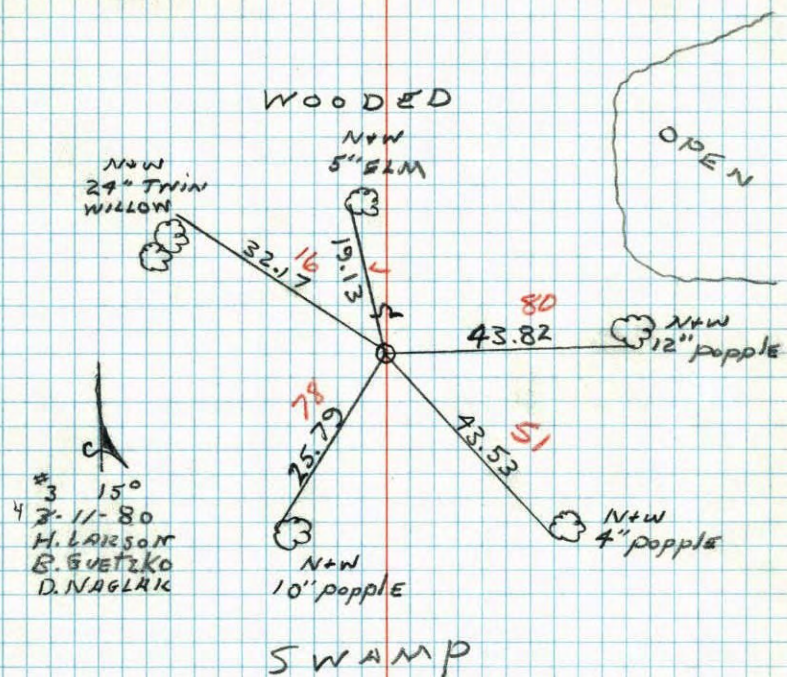
11 APR 80  
H. LARSON  
B. GOETZKO  
D. NAGLAK

TEMPERATURE CORRECTED  
AND HORIZONTALLY  
TAPED MEASUREMENTS

ROLAND W. ANDERSON  
COUNTY SURVEYOR  
ANOKA COUNTY, MINNESOTA

E 1/4 COR. SECTION 4 T31 R23

RESET CORNER TO ITS ORIGINAL PLACE  
WHEN FIRST FOUND. SET CAST IRON  
MONUMENT FLUSH WITH SIGN AND  
POST ON N. SIDE.



E 1/4 Sec. 8, T31, R23

