

CERTIFICATE OF LOCATION OF GOVERNMENT CORNER

County of Anoka

State of Minnesota

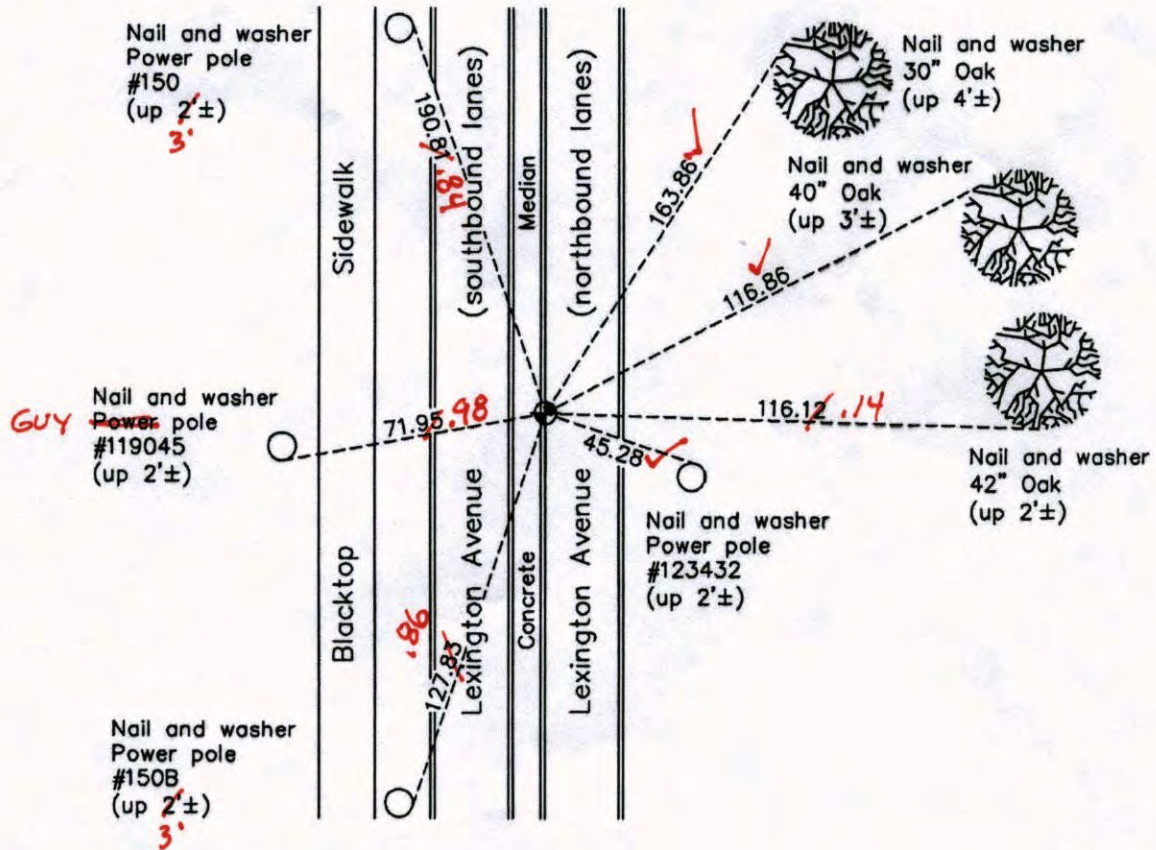
East 1/4 Corner of Sec. 2 Township 31 Range 23

On the 8th day of August, 1969, the described corner was evidenced by area resurvey

and to perpetuate the location of said corner, at the exact location thereof, a permanent marker was placed consisting of a cast iron monument

AND on the 25th day of October, 2013, said permanent marker was replaced with a slimline cast iron monument set in face of concrete curb and the ties were updated

Updated reference ties are as shown below.



4-21-14
BK-55
T/T

Revision Date
12/12/13

N.A.D. 1983 Coordinates
(1996 Adjustment)

County Project Coordinates	
Northing	161527.9840
Easting	526749.7577
Date	10/15/98

I hereby certify that this United States public land survey monument record is correct and complete to the best of my knowledge and belief.

Larry D. Hoium Date 12/12/13

Larry D. Hoium, Anoka County Surveyor
Minnesota License Number 18165

VRS 30Q = 0.05 N = 161527.9924 E = 526749.6962

CERTIFICATE OF LOCATION OF GOVERNMENT CORNER

County of Anoka

State of Minnesota

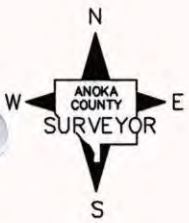
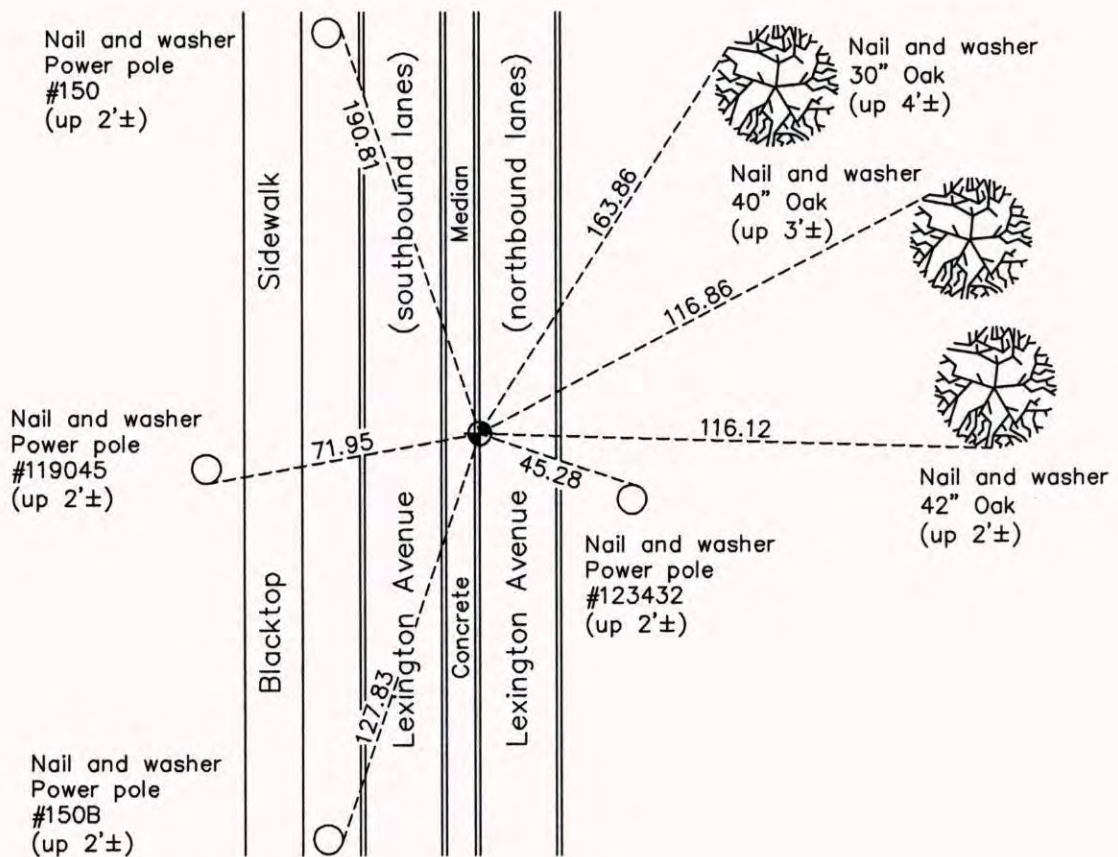
East 1/4 Corner of Sec. 2 Township 31 Range 23

On the 8th day of August, 1969, the described corner was evidenced by area resurvey

and to perpetuate the location of said corner, at the exact location thereof, a permanent marker was placed consisting of a cast iron monument

AND on the 25th day of October, 2013, said permanent marker was replaced with a slimline cast iron monument set in face of concrete curb and the ties were updated

Updated reference ties are as shown below.



Revision Date
12/12/13

N.A.D. 1983 Coordinates
(1996 Adjustment)

County Project Coordinates	
Northing	161527.9840
Easting	526749.7577
Date	10/15/98

I hereby certify that this United States public land survey monument record is correct and complete to the best of my knowledge and belief.

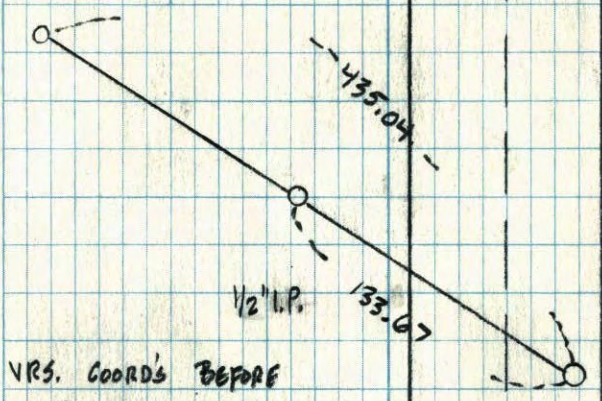
Larry D. Hoium Date 12/12/13

Larry D. Hoium, Anoka County Surveyor
Minnesota License Number 18165

E 1/4 SEC 2 T 31 R 23

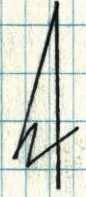
TRANSIT TIE + SWING TIES
FOR REMOVAL OF C.I.M. FOR CONST.

1/2" I.P.



VRS. COORDS BEFORE
 REMOVAL 300 0.05
 N: 161527.9675
 E: 526749.7542

5-11-12
 J. SIMMER
 S. HAAS



CO. RD. # 17
 LEXINGTON AVE.

CERTIFICATE OF LOCATION OF GOVERNMENT CORNER

County of Anoka

State of Minnesota

East 1/4 Corner of Sec. 2 Township 31 Range 23

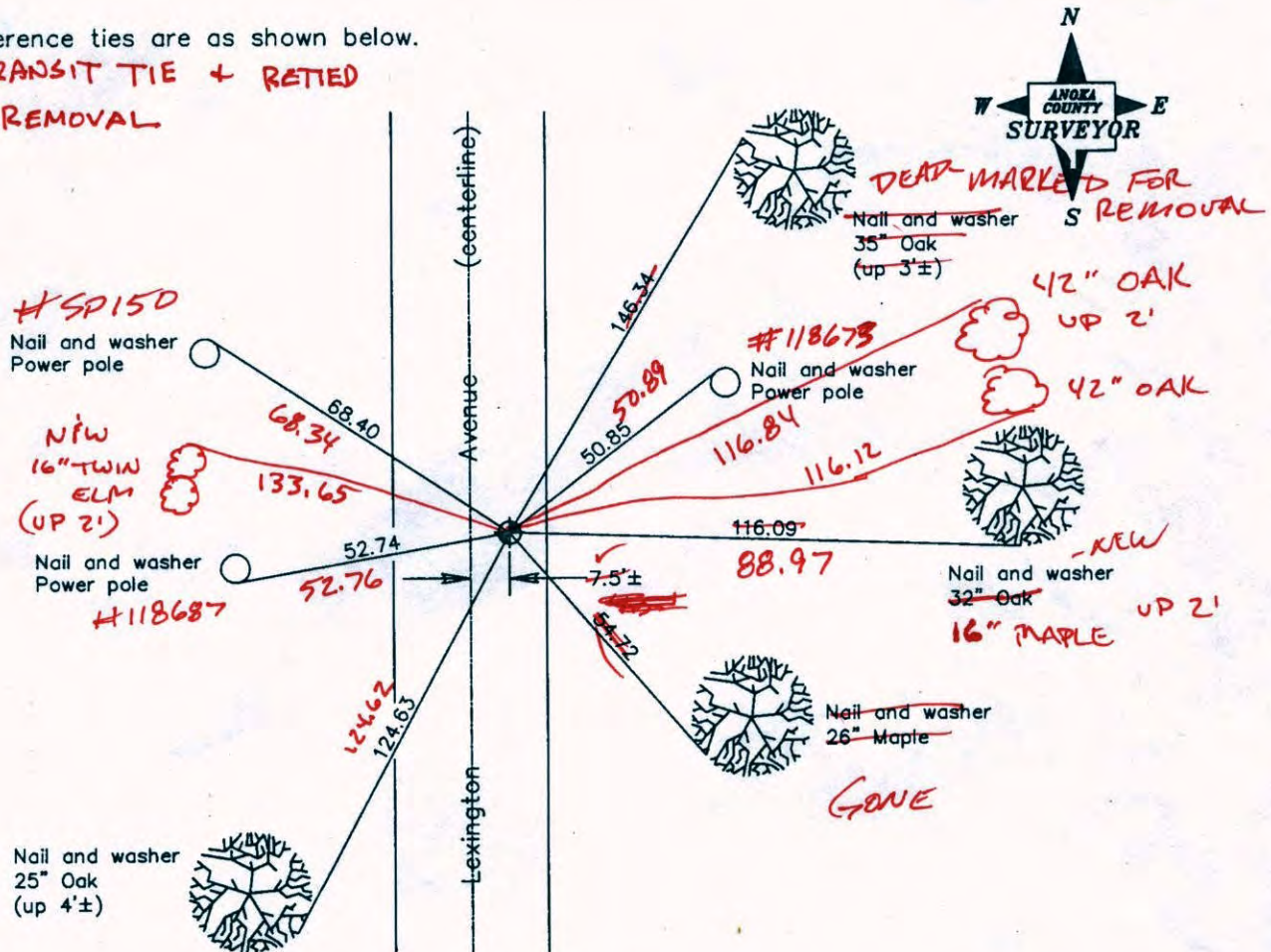
On the 8th day of August, 1969, the described corner was evidenced by area resurvey

and to perpetuate the location of said corner, at the exact location thereof, a permanent marker was placed consisting of a cast iron monument

AND on the 5th day of July, 2006, said permanent marker was found and the ties were updated

Updated reference ties are as shown below.

5-11-12 TRANSIT TIE + RETIED BEFORE REMOVAL



Revised date

7/13/95
10/15/98
7/05/06

N.A.D. 1983 Coordinates
(1996 Adjustment)

County Project Coordinates	
Northing	161527.9840
Easting	526749.7577
Date	10/15/98

I hereby certify that this United States public land survey monument record is correct and complete to the best of my knowledge and belief.

Larry D. Hoium Date 7/05/06

Larry D. Hoium, Anoka County Surveyor

Minnesota License Number 18165

VR5 3D Q = 0.05 BEFORE REMOVAL

161 527.9675

526 749.7542

CERTIFICATE OF LOCATION OF GOVERNMENT CORNER

County of Anoka

State of Minnesota

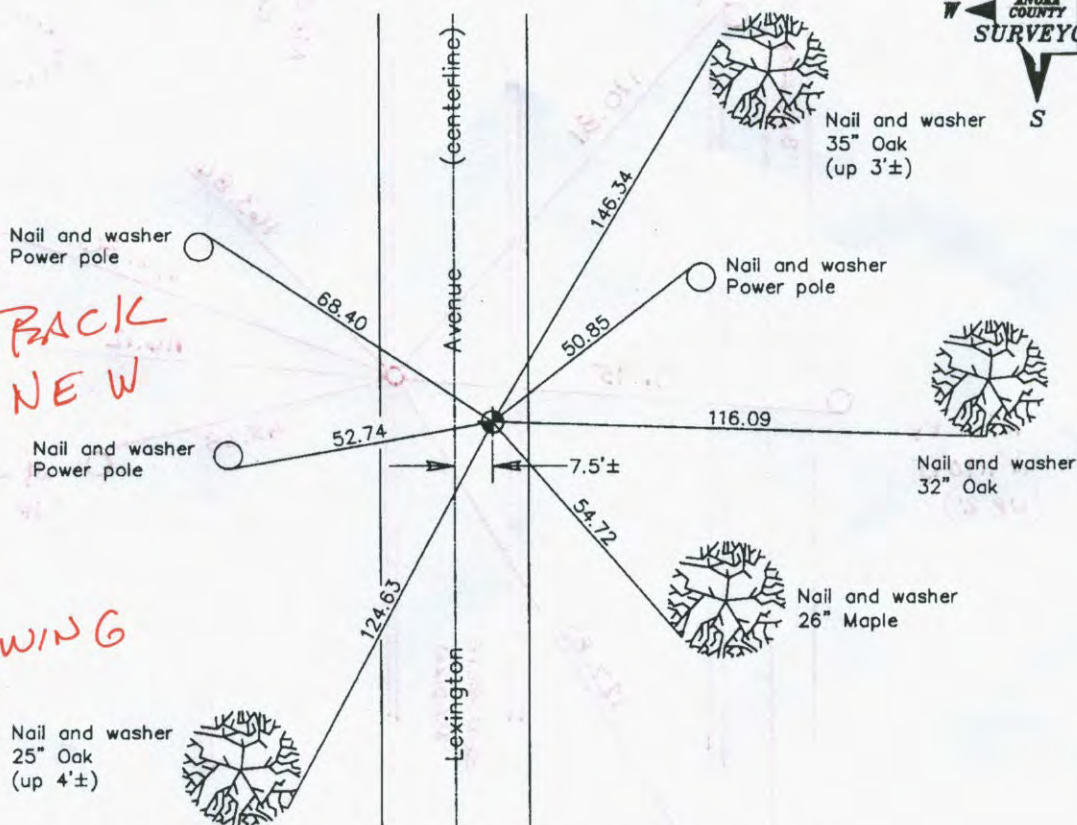
East 1/4 Corner of Sec. 2 Township 31 Range 23

On the 8th day of August, 1969, the described corner was evidenced by area resurvey

and to perpetuate the location of said corner, at the exact location thereof, a permanent marker was placed consisting of a cast iron monument

AND on the 5th day of July, 2006, said permanent marker was found and the ties were updated 10-25-13 JS SH SET SLIMLINE

Updated reference ties are as shown below. C.I.M. IN FACE CURB. N



SEE BACK FOR TIE DRAWING

S-0.01
W 0.04

Revised date
7/13/95
10/15/98
7/05/06

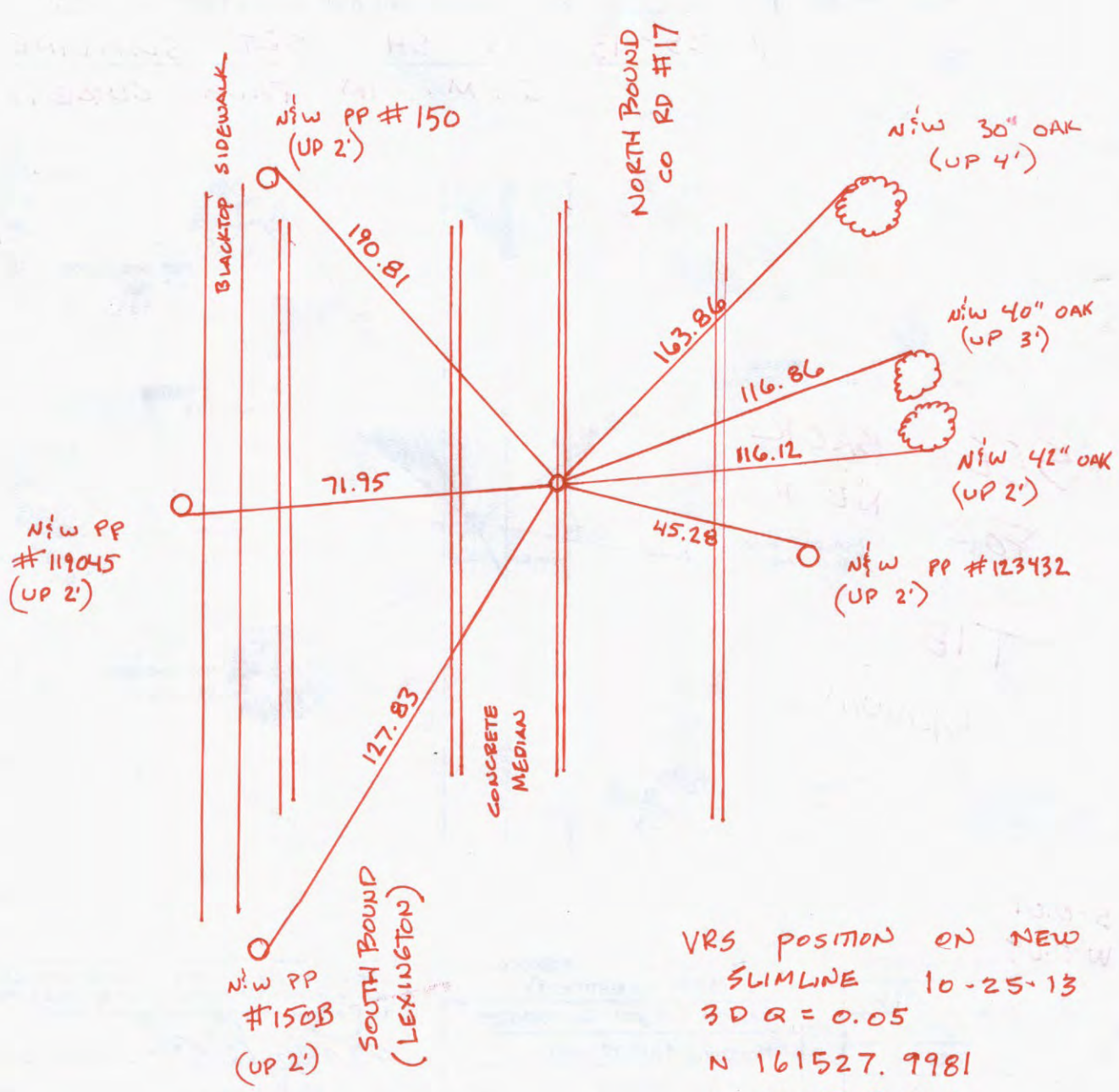
N.A.D. 1983 Coordinates (1996 Adjustment)	
County Project Coordinates	
Northing	161527.9840
Easting	526749.7577
Date	10/15/98

I hereby certify that this United States public land survey monument record is correct and complete to the best of my knowledge and belief.

Larry D. Hoium Date 7/05/06

Larry D. Hoium, Anoka County Surveyor

Minnesota License Number 18165



VRS POSITION ON NEW
 SLIMLINE 10-25-13
 3D Q = 0.05
 N 161527.9981
 E 526749.7340

CERTIFICATE OF LOCATION OF GOVERNMENT CORNER

County of Anoka

State of Minnesota

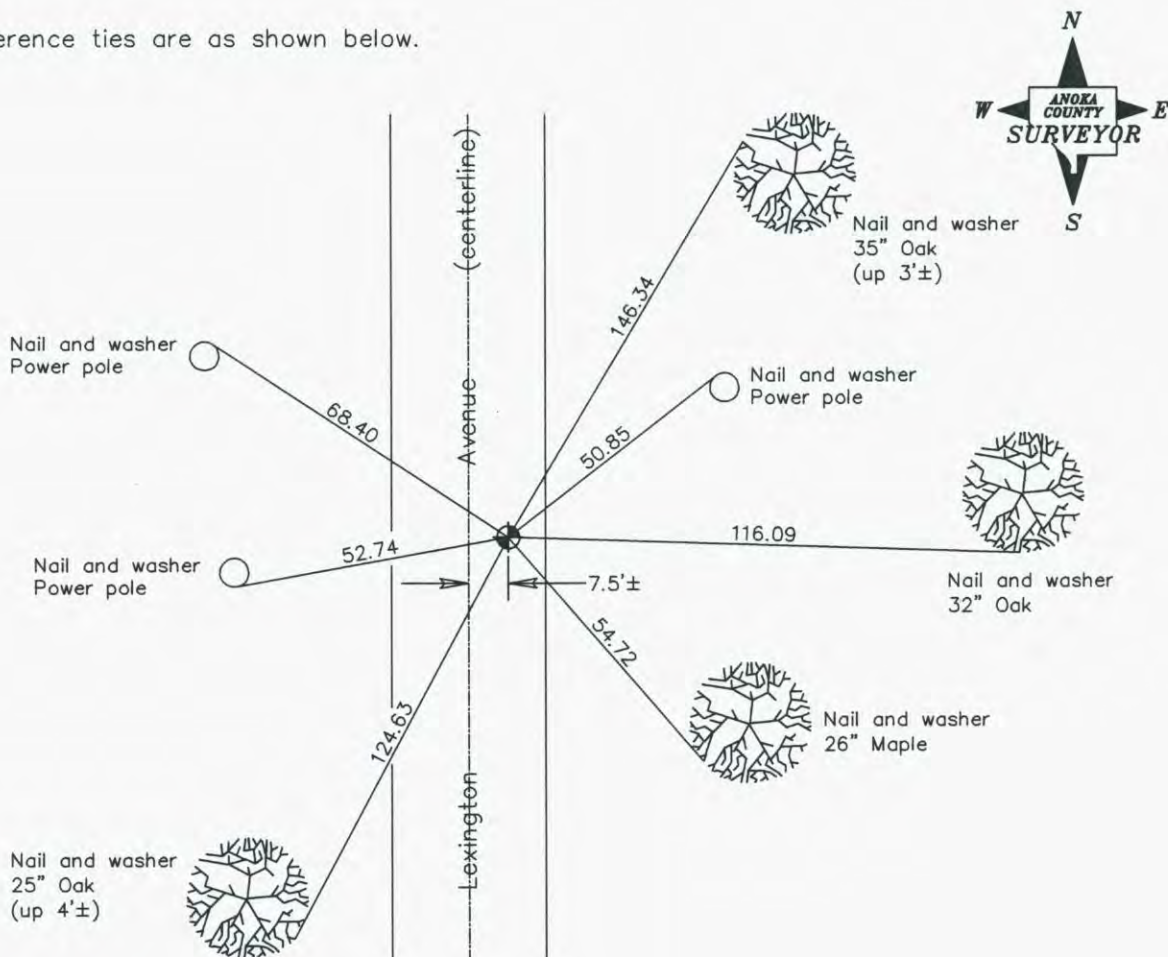
East 1/4 Corner of Sec. 2 Township 31 Range 23

On the 8th day of August, 1969, the described corner was evidenced by area resurvey

and to perpetuate the location of said corner, at the exact location thereof, a permanent marker was placed consisting of a cast iron monument

AND on the 5th day of July, 2006, said permanent marker was found and the ties were updated

Updated reference ties are as shown below.



Revised date
7/13/95
10/15/98
7/05/06

N.A.D. 1983 Coordinates (1996 Adjustment)	
County Project Coordinates	
Northing	161527.9840
Easting	526749.7577
Date	10/15/98

I hereby certify that this United States public land survey monument record is correct and complete to the best of my knowledge and belief.

Larry D. Hoium Date 7/05/06

Larry D. Hoium, Anoka County Surveyor

Minnesota License Number 18165