

# CERTIFICATE OF LOCATION OF GOVERNMENT CORNER

County of Anoka

State of Minnesota

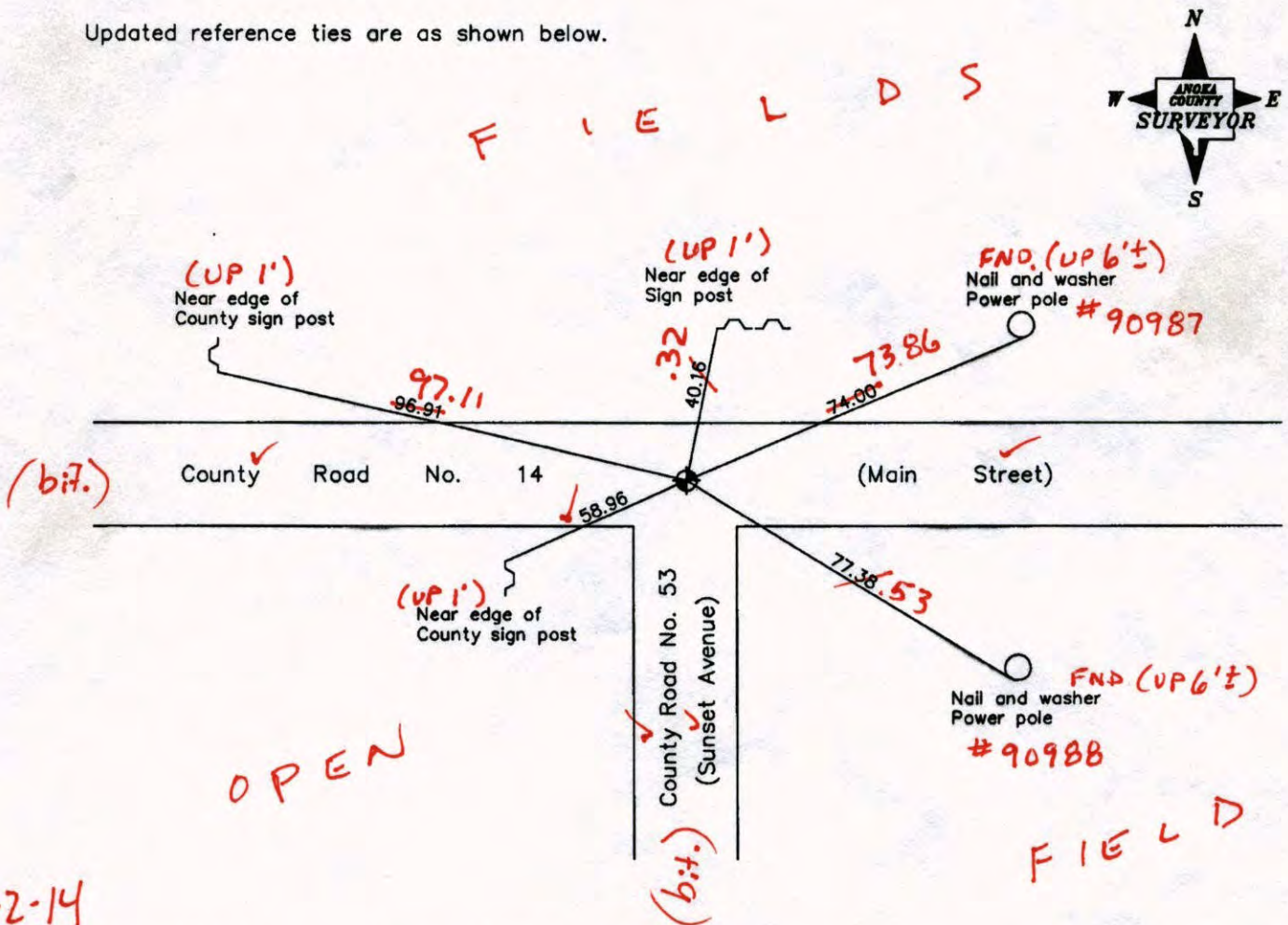
Southeast Corner of Sec. 1 Township 31 Range 23

On the 4th day of October, 1961, the described corner was evidenced by area resurvey

and to perpetuate the location of said corner, at the exact location thereof, a permanent marker was placed consisting of a cast iron monument (7'± S. AND 4'± W. of E E)

AND on the 7th day of June, 2006, said permanent marker was found and the ties were updated

Updated reference ties are as shown below.



6-2-14  
BK-55  
T2000  
WILD

Revised date

7/21/95
6/11/98
6/07/06

N.A.D. 1983 Coordinates  
(1996 Adjustment)

County Project Coordinates	
Northing	158751.6721
Easting	531996.6486
Date	6/11/98

I hereby certify that this United States public land survey monument record is correct and complete to the best of my knowledge and belief.

*Larry D. Hoium* Date 6/07/06  
 Larry D. Hoium, Anoka County Surveyor  
 Minnesota License Number 18165

VRS

3DQ = 0.05

N = 158751.6450 E = 531996.6036

# CERTIFICATE OF LOCATION OF GOVERNMENT CORNER

County of Anoka

State of Minnesota

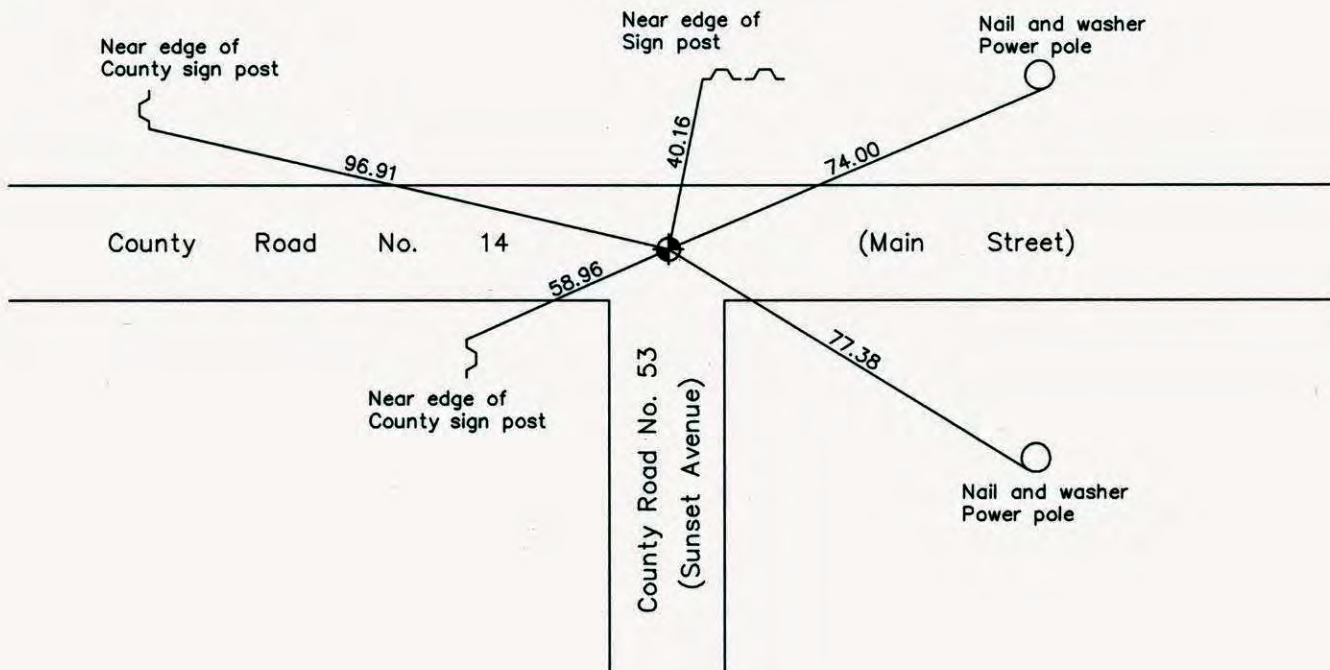
Southeast Corner of Sec. 1 Township 31 Range 23

On the 4th day of October, 1961, the described corner was evidenced by area resurvey

and to perpetuate the location of said corner, at the exact location thereof, a permanent marker was placed consisting of a cast iron monument

AND on the 7th day of June, 2006, said permanent marker was found and the ties were updated

Updated reference ties are as shown below.



Revised date
7/21/95
6/11/98
6/07/06

N.A.D. 1983 Coordinates (1996 Adjustment)	
County Project Coordinates	
Northing	<u>158751.6721</u>
Easting	<u>531996.6486</u>
Date	<u>6/11/98</u>

I hereby certify that this United States public land survey monument record is correct and complete to the best of my knowledge and belief.

*Larry D. Hoium* Date 6/07/06

Larry D. Hoium, Anoka County Surveyor

Minnesota License Number 18165

# CERTIFICATE OF LOCATION OF GOVERNMENT CORNER

County of Anoka

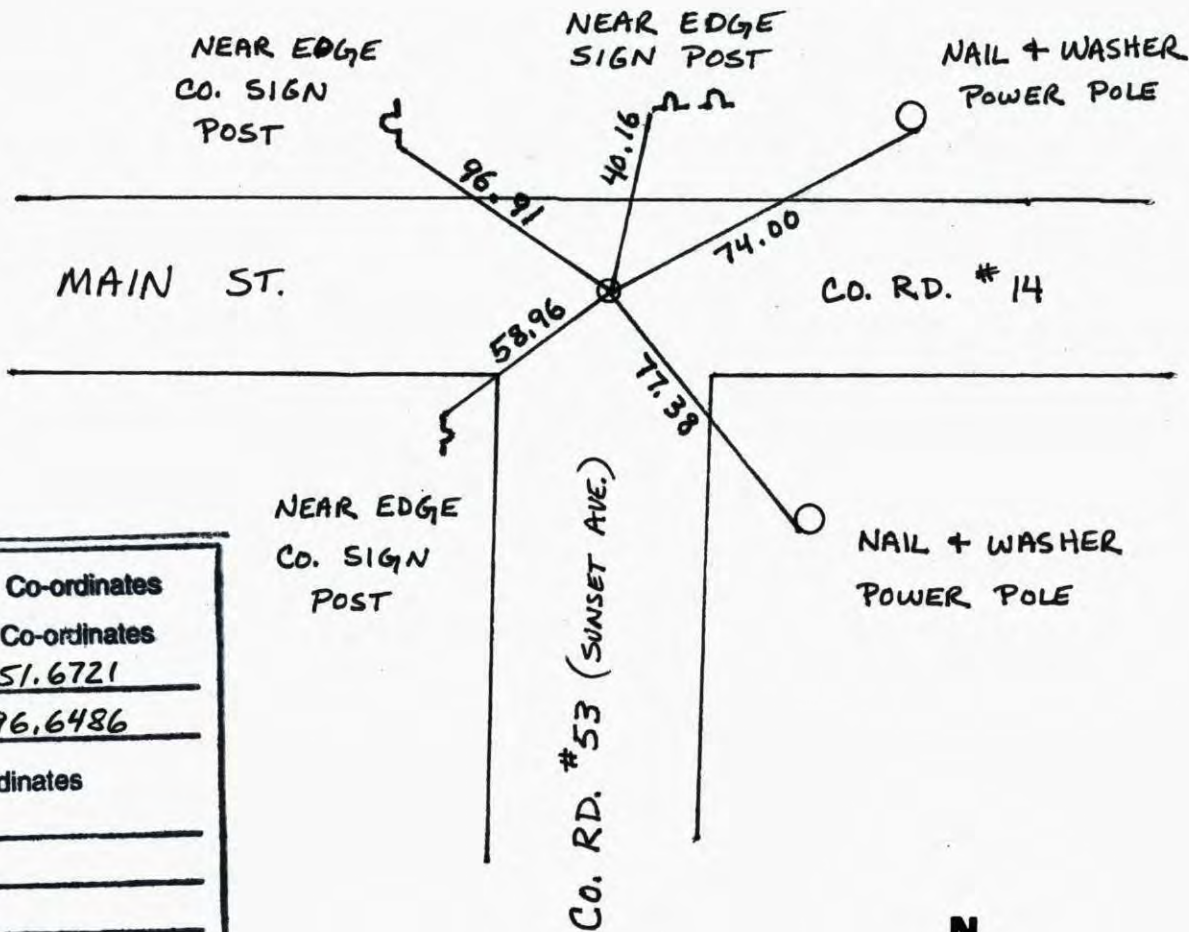
State of Minnesota

SOUTHEAST Corner of Sec. 1 Township 31 Range 23

I hereby certify that on the 4 day of OCTOBER, 1961, I found the described corner which was evidenced by AREA RESURVEY

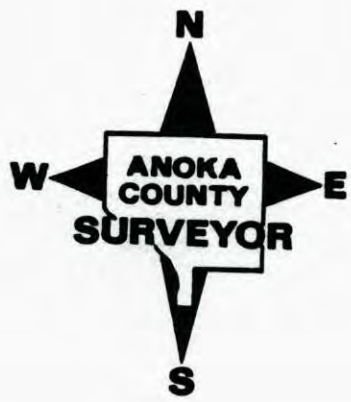
and I further certify that to perpetuate the location of said corner, I did, at the exact location thereof, place a permanent marker consisting of CAST IRON MONUMENT

which reference or witness monuments are located in the manner following:



N.A.D.	1983	Co-ordinates
County	Project	Co-ordinates
Northing		<u>158751.6721</u>
Easting		<u>531996.6486</u>
State Plane Co-ordinates		
Y _____		
X _____		
Date _____		

Revised date	Revised date	Revised date
<u>6-3-86</u>		
<u>6-20-90</u>		
<u>7-21-95</u>		
<u>6-11-98</u>		
<u>6-7-06</u>		



# CERTIFICATE OF LOCATION OF GOVERNMENT CORNER

County of Anoka

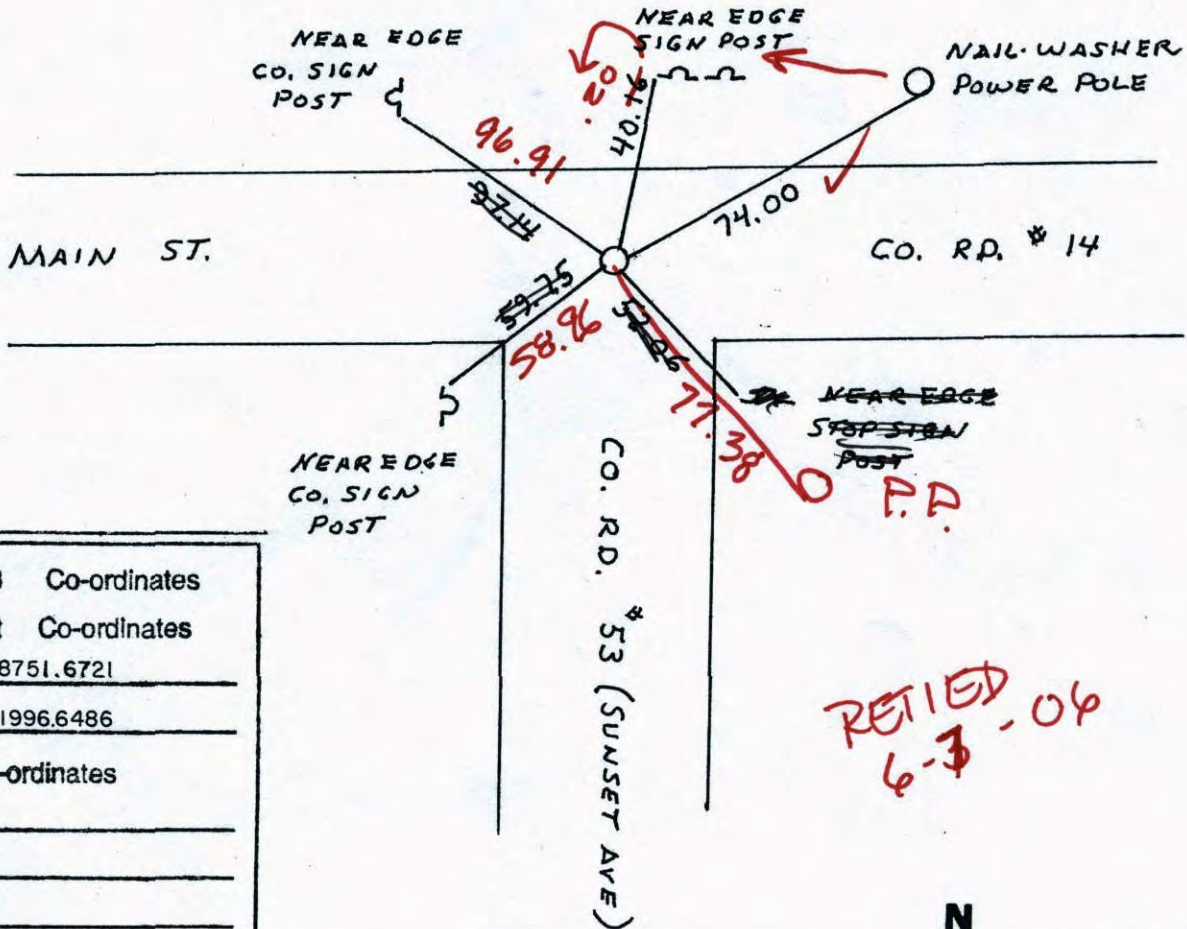
State of Minnesota

SOUTHEAST Corner of Sec. 1 Township 31 Range 23

I hereby certify that on the 4 day of OCT, 1961, I found the described corner which was evidenced by AREA RESURVEY

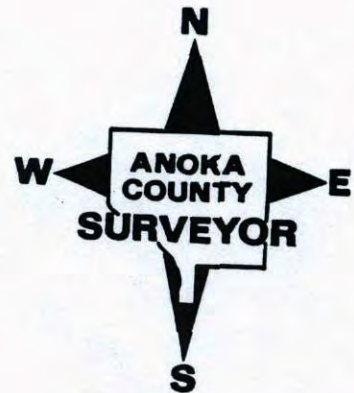
and I further certify that to perpetuate the location of said corner, I did, at the exact location thereof, place a permanent marker consisting of CAST IRON MONUMENT

which reference or witness monuments are located in the manner following:



N.A.D.	1983	Co-ordinates
County Project		Co-ordinates
Northing	<u>158751.6721</u>	
Easting	<u>531996.6486</u>	
State Plane Co-ordinates	Y _____	
	X _____	
Date	_____	

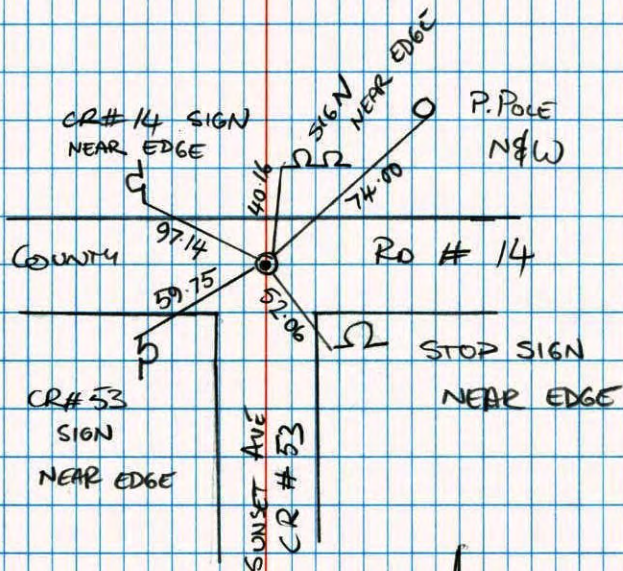
Revised date	Revised date	Revised date
6-3-86		
6-20-90		
7-21-95		
6-11-98		



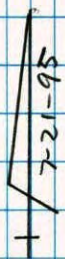


SOUTHEAST SEC 1 T 31 R 23

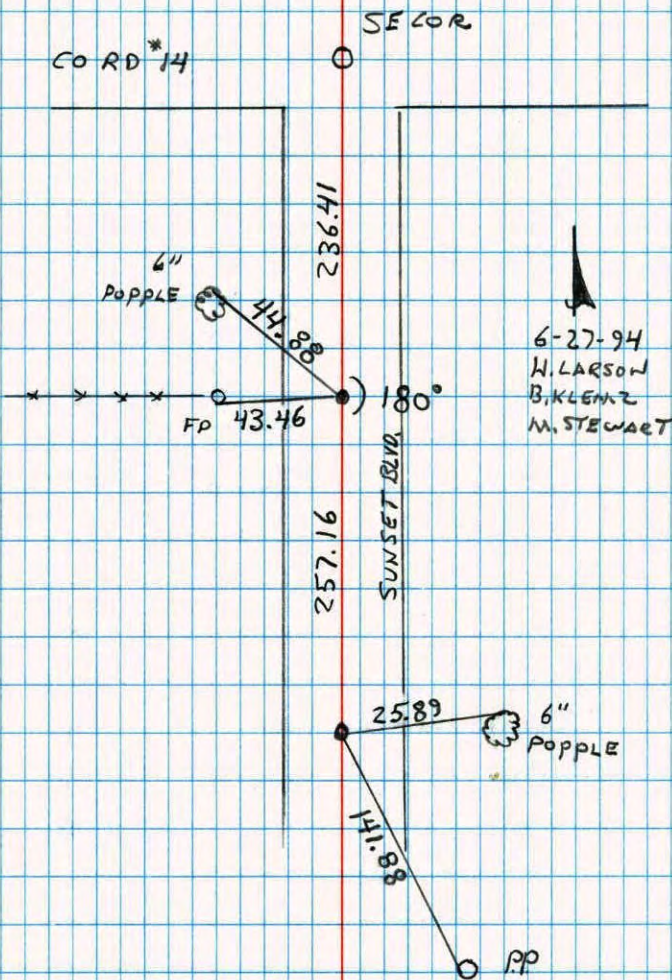
RETIE CAST  
IRON MONUMENT AFTER  
ROAD CONSTRUCTION



- B. KLEMZ
- M. STEWART
- J. ANDERSON
- J. ANDERSON



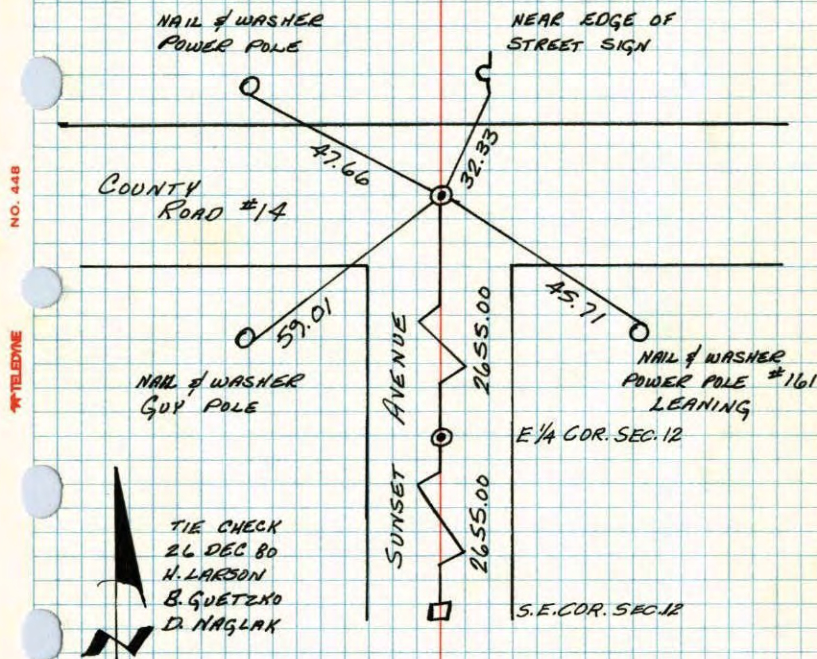
SE CORNER SECTION 1 T31 R23  
SET PK TRANSIT TIES



- 6-27-94
- H. LARSON
- B. KLEMZ
- M. STEWART

## S.E. CORNER SECTION 1-T31-R23

SET CORNER BY OLD DISTANCE AND STRAIGHT LINE  
FROM S.E. CORNER OF SECTION 12 THROUGH THE E<sup>1</sup>/<sub>4</sub>  
CORNER SECTION 12. OLD DISTANCE IS 5310.00. SET  
CAST IRON MONUMENT FLUSH. PN'S 2.00' NORTH AND EAST.  
4 OCT 61  
R.O. FREEMAN  
M.D. ANDERSON

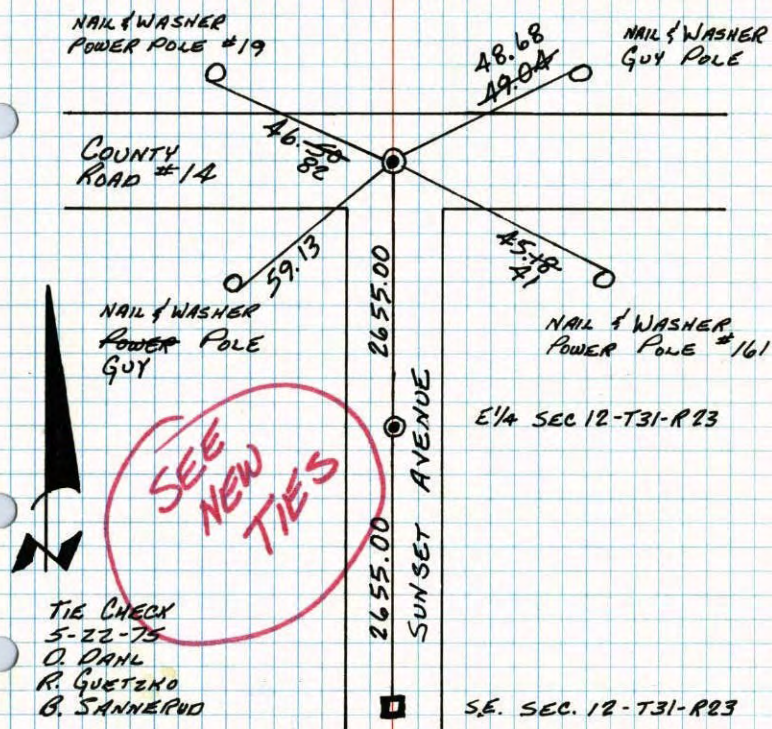


TEMPERATURE CORRECTED  
AND HORIZONTALLY  
TAPED MEASUREMENTS

ROLAND W. ANDERSON  
COUNTY SURVEYOR  
ANOKA COUNTY, MINNESOTA

## S.E. COR. SEC. 1, T31, R23

SET CORNER BY OLD DISTANCE AND STRAIGHT LINE  
FROM S.E. CORNER OF SEC. 12 THROUGH THE E<sup>1</sup>/<sub>4</sub> CORNER  
SEC. 12. OLD DISTANCE IS 5310.00. SET CAST  
IRON MONUMENT FLUSH. PN'S 2.00' NORTH & EAST. 4 OCT 61  
R.O. FREEMAN  
M.D. ANDERSON



TEMPERATURE CORRECTED  
AND HORIZONTALLY  
TAPED MEASUREMENTS

ROLAND W. ANDERSON  
COUNTY SURVEYOR  
ANOKA COUNTY, MINNESOTA

REDRAWN  
JAN '77  
R. GUETZKO

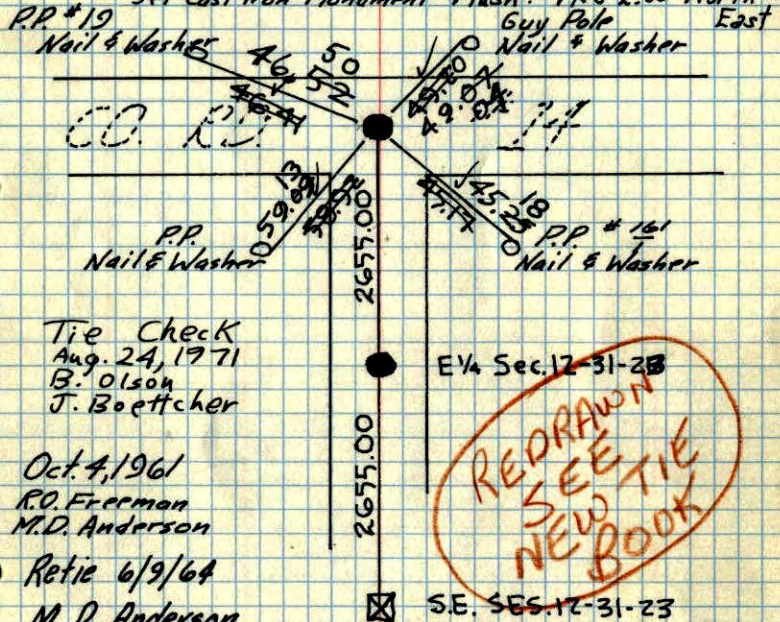
TIE CHECK  
10 AUG 77  
R. SANNERUD  
S. BRIEN  
J. STEPHENS

SE. Cor. Sec. 1-31-23

Set Cor by old distance & straight line from SE. Cor of Sec. 12 through the E. 1/4 Cor Sec. 12.

Old distance is 5310.00

Set Cast Iron Monument Plush. PK's 2.00' North + East



Tie Check  
Aug. 24, 1971  
B. Olson  
J. Boettcher

Oct. 4, 1961  
R.O. Freeman  
M.D. Anderson

Retie 6/9/64  
M. D. Anderson  
R. Carlson

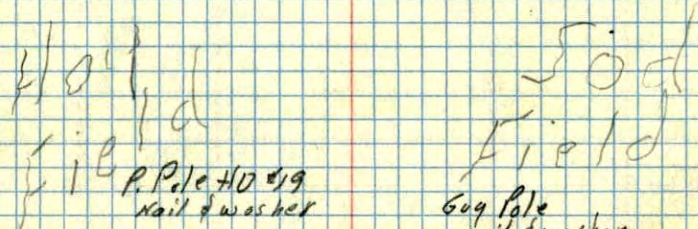
Tie Check  
July 15, 1968  
D. Powell  
P. Pieh  
R. Olson

Tie Check  
5/22/75  
D. DAHL  
B. Guetzko  
B. Sannerud

**ROLAND W. ANDERSON**  
COUNTY SURVEYOR  
ANOKA COUNTY, MINNESOTA

TEMPERATURE CORRECTED  
AND HORIZONTALLY  
TAPED MEASUREMENTS

SE Cor Sec 1-31-23- Blaine  
meas. N from SE Cor Sec 12 thru  
E 1/4 Cor Sec 12- old Survey dist of  
5310.00' for line, dug hole 3'±  
Found old Granite Mon to be gone  
Set Cast Iron Mon down 05'±



County

Rd #14

P. Pole  
nail & washer

P. Pole #161  
Nail & washer

E 1/4 Cor Sec 12  
3" well point  
with Cast Iron  
Mon on Top

County Rd #53  
Sunset Ave.

Granite with 1/2  
iron on top

TC