

CERTIFICATE OF LOCATION OF GOVERNMENT CORNER

County of Anoka State of Minnesota

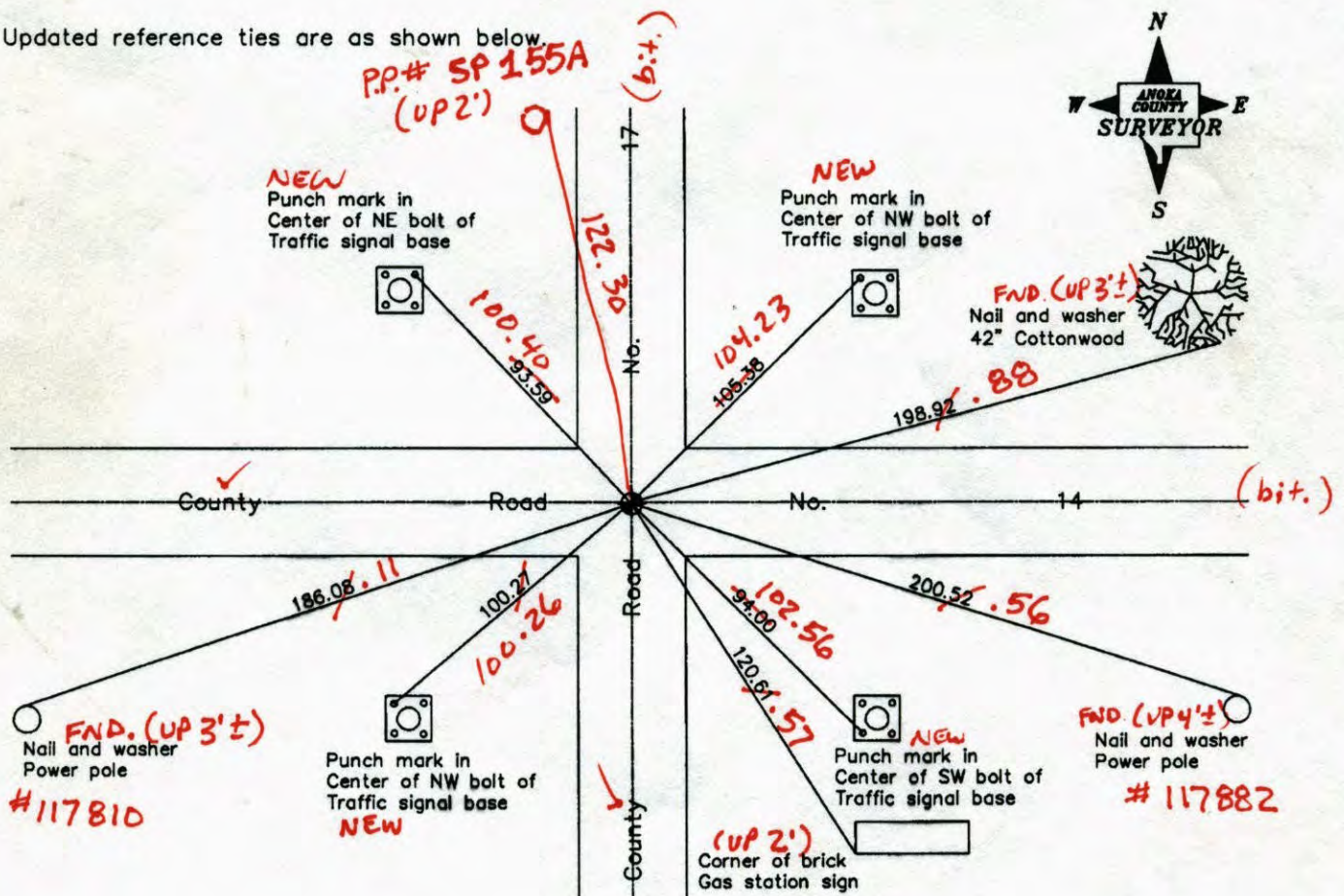
Southwest Corner of Sec. 1 Township 31 Range 23

On the 1st day of September, 1960, the described corner was evidenced by a concrete monument

and to perpetuate the location of said corner, at the exact location thereof, a permanent marker was placed consisting of a cast iron monument

AND on the 17th day of October, 2005, said permanent marker was found and the ties were updated

Updated reference ties are as shown below



6-2-14
BK-55
WILD
T2000

Revised date	7/13/95
	9/02/98
	10/17/05

N.A.D. 1983 Coordinates (1996 Adjustment)	
County Project Coordinates	
Northing	158853.9336
Easting	526762.8584
Date	9/02/98

I hereby certify that this United States public land survey monument record is correct and complete to the best of my knowledge and belief.

Larry D. Holium Date 10/17/05

Larry D. Holium, Anoka County Surveyor

Minnesota License Number 18165

YRS
3DQ = 0.06 N = 158853.9353 E = 526762.8231

CERTIFICATE OF LOCATION OF GOVERNMENT CORNER

County of Anoka

State of Minnesota

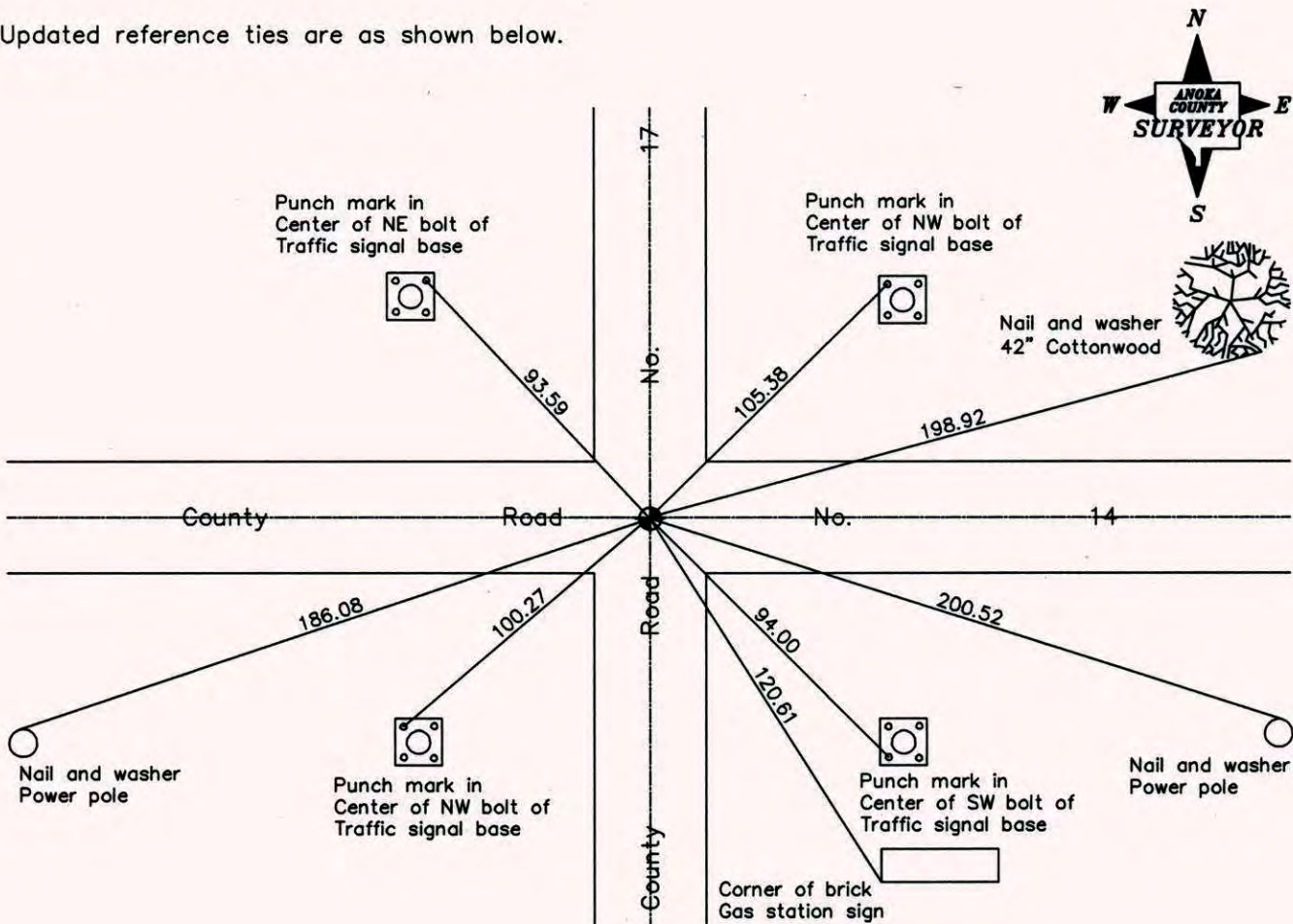
Southwest Corner of Sec. 1 Township 31 Range 23

On the 1st day of September, 1960, the described corner was evidenced by a concrete monument

and to perpetuate the location of said corner, at the exact location thereof, a permanent marker was placed consisting of a cast iron monument

AND on the 17th day of October, 2005, said permanent marker was found and the ties were updated

Updated reference ties are as shown below.



Revised date
7/13/95
9/02/98
10/17/05

N.A.D. 1983 Coordinates (1996 Adjustment)	
County Project Coordinates	
Northing	158853.9336
Easting	526762.8584
Date	9/02/98

I hereby certify that this United States public land survey monument record is correct and complete to the best of my knowledge and belief.

Larry D. Hoium Date 10/17/05

Larry D. Hoium, Anoka County Surveyor

Minnesota License Number 18165

CERTIFICATE OF LOCATION OF GOVERNMENT CORNER

County of Anoka State of Minnesota

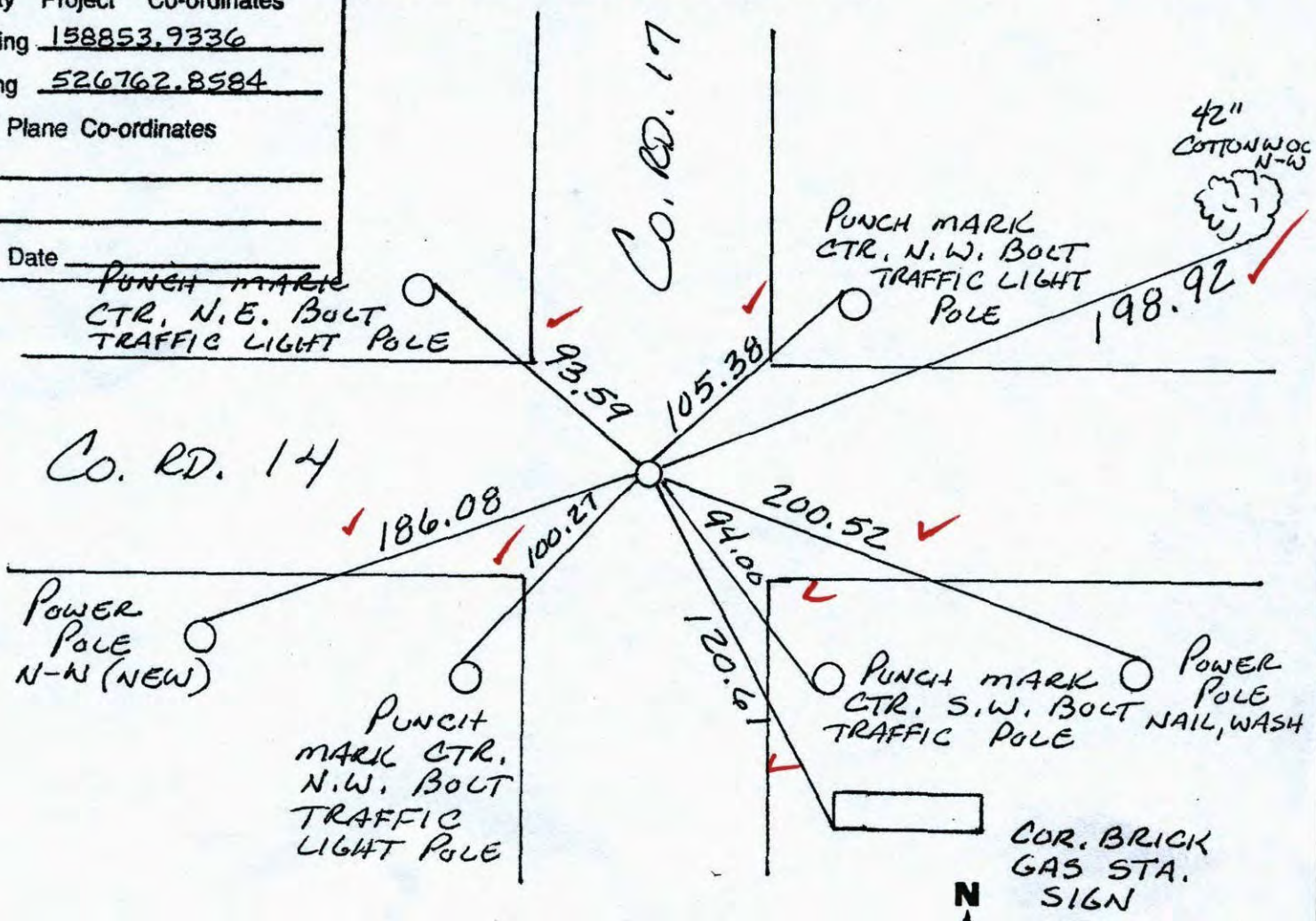
SOUTHWEST Corner of Sec. 1 Township 31 Range 23

I hereby certify that on the 1 day of SEPT, 1960, I found the described corner which was evidenced by CONCRETE MONUMENT

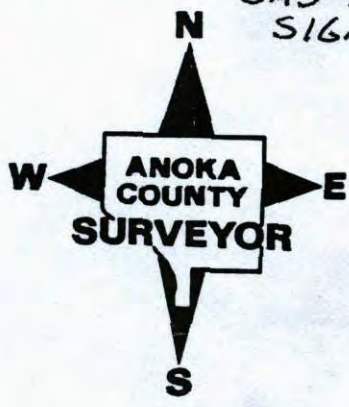
and I further certify that to perpetuate the location of said corner, I did, at the exact location thereof, place a permanent marker consisting of CAST IRON ON CENTERLINE

N.A.D. 1983 Co-ordinates
 which reference or witness
 County Project Co-ordinates
 Northing 158853.9336
 Easting 526762.8584
 State Plane Co-ordinates
 Y _____
 X _____
 Date _____

monuments are located in the manner following:



Revised date	Revised date	Revised date
7-12-93		
7-13-95		
9-2-98		
10-17-05		



CERTIFICATE OF LOCATION OF GOVERNMENT CORNER

County of Anoka

State of Minnesota

SOUTHWEST Corner of Sec. 1 Township 31 Range 23

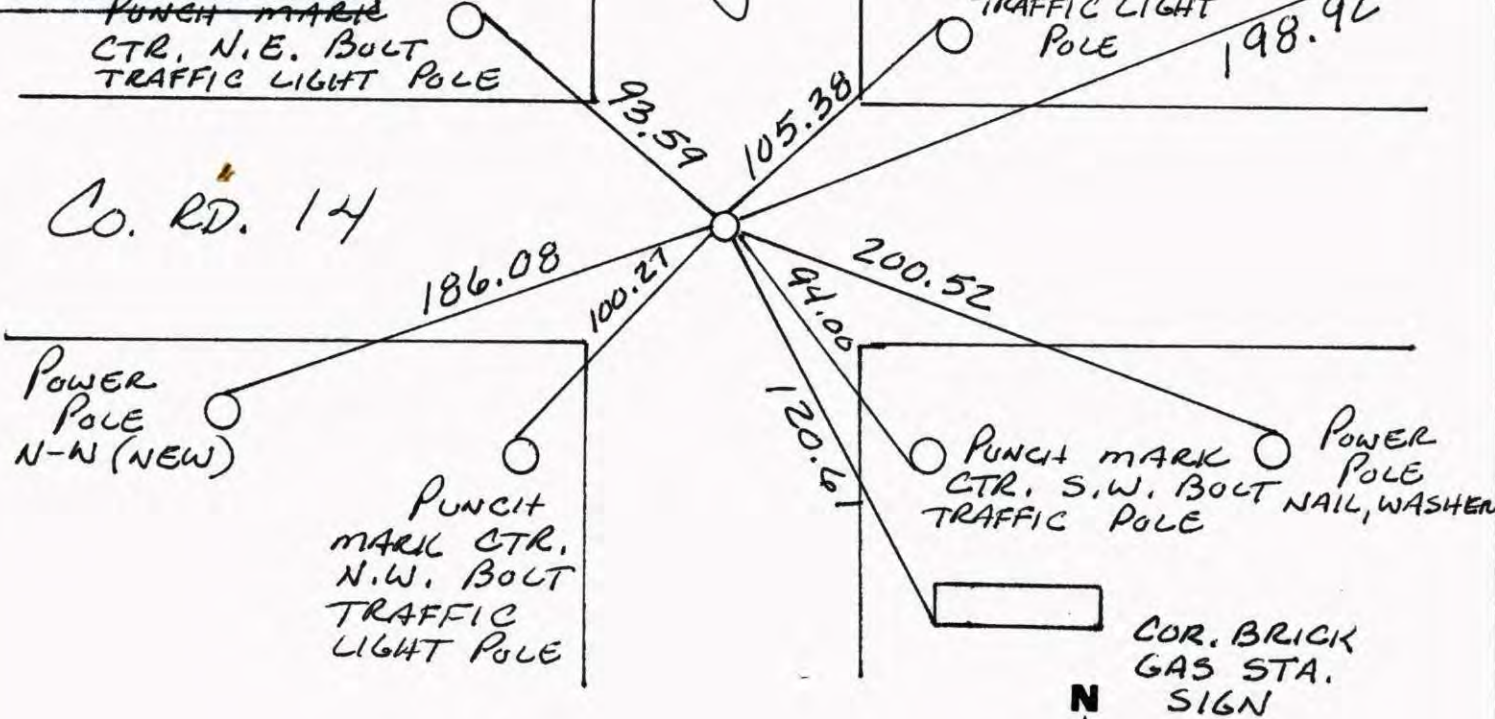
I hereby certify that on the 1 day of SEPT, 1960, I found the described corner which was evidenced by CONCRETE MONUMENT

and I further certify that to perpetuate the location of said corner, I did, at the exact location thereof, place a permanent marker consisting of CAST IRON ON CENTERLINE

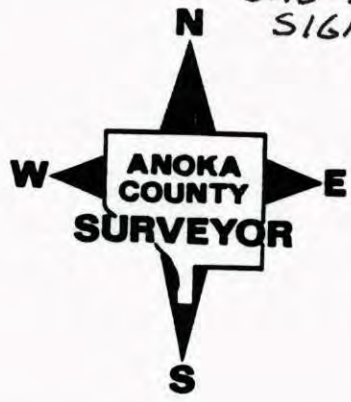
N.A.D. 1983 Co-ordinates which reference or witness monuments are located in the manner following:

County	Project	Co-ordinates
Northing	<u>158853.9336</u>	
Easting	<u>526762.8584</u>	
State Plane Co-ordinates		
Y _____		
X _____		

Date 9/02/98



Revised date	Revised date	Revised date
<u>7-12-93</u>		
<u>7-13-95</u>		
<u>9-2-98</u>		
<u>10-17-05</u>		



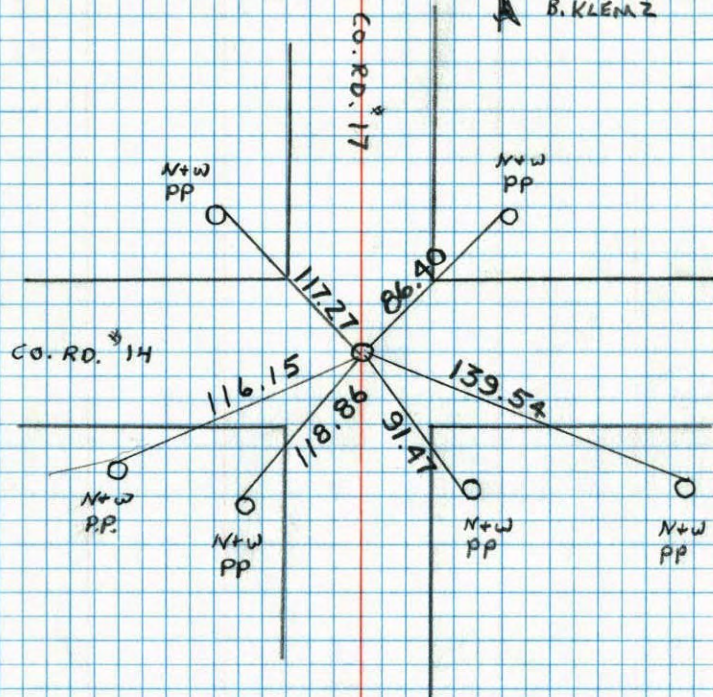
SW CORNER SECTION 1 T31 R23

RESET AND RETIED AFTER CONSTRUCTION

G.I. FLUSH AND ON E E

7-12-93

H. LARSON
B. KLENZ



NO. 448

TELETYPE

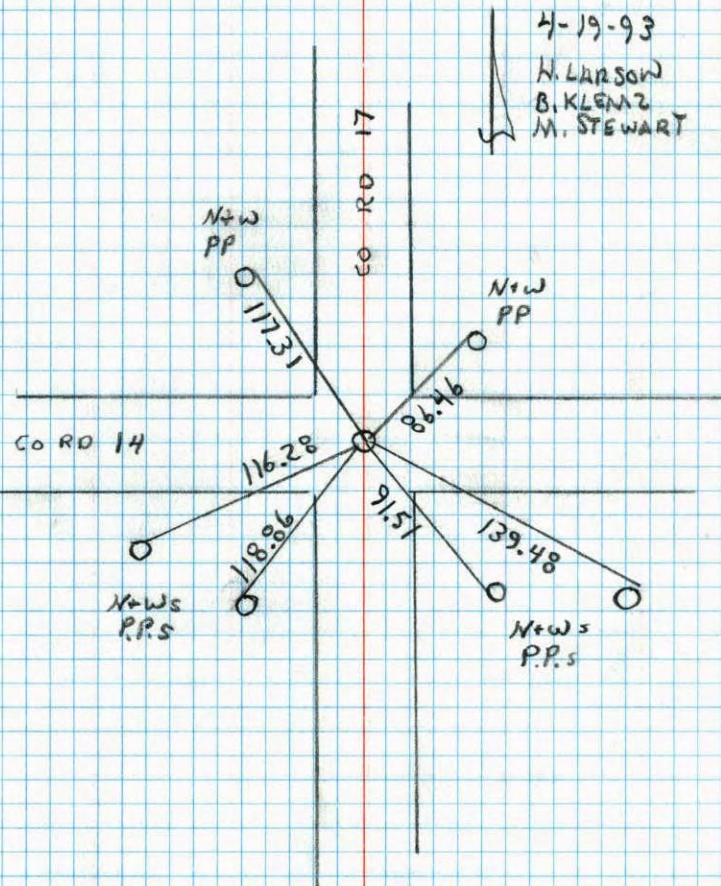
CONSTRUCTION TIES

~~NE~~ SW COR. SECTION 1 T31 R23

RETIED FOR ROAD CONSTRUCTION

4-19-93

H. LARSON
B. KLENZ
M. STEWART



NO. 448

TELETYPE

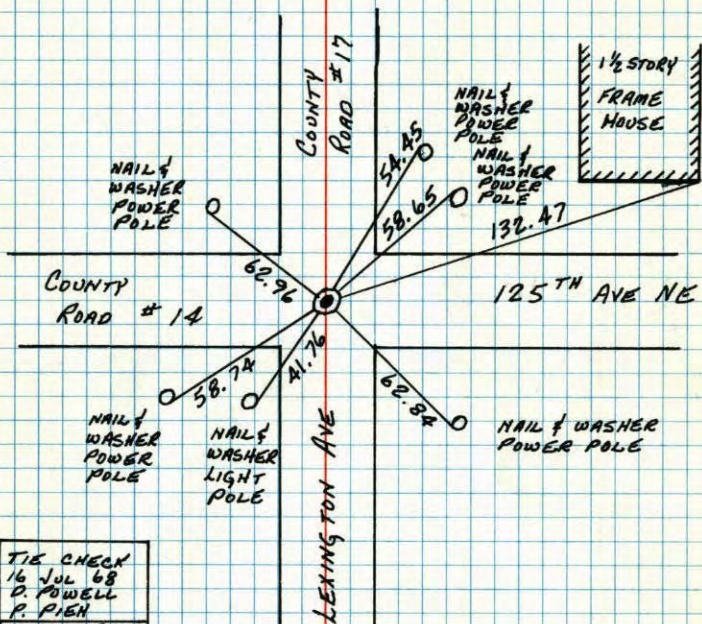
S.W. COR. SEC. 1 - T31 - R23

CONCRETE MONUMENT DOWN 0.7'. RAILROAD SPIKE ON NORTH SIDE. PK'S 2.00' NORTH AND EAST. 1 SEP 60

D. POTTER
R. ROBINSON

SET SHORT CAST IRON MONUMENT FLUSH ON TOP OF BROKEN CONCRETE. 10 AUG 70

D. POWELL
R. BRIEN
B. OLSON



TIE CHECK
16 JUL 68
D. POWELL
P. PIEN

TIE CHECK
22 MAY 75
D. DAHL
B. GUETZKO
B. SANNERUD

TIE CHECK
10 AUG 77
R. SANNERUD
S. BRIEN
J. STEPHENS

TIE CHECK
5-29-80
B. STEPHENS
P. ROSS
P. HORNBY

TEMPERATURE CORRECTED
AND HORIZONTALLY
TAPED MEASUREMENTS

ROLAND W. ANDERSON
COUNTY SURVEYOR
ANOKA COUNTY, MINNESOTA

SW COR. SEC 1 - T31 - R23

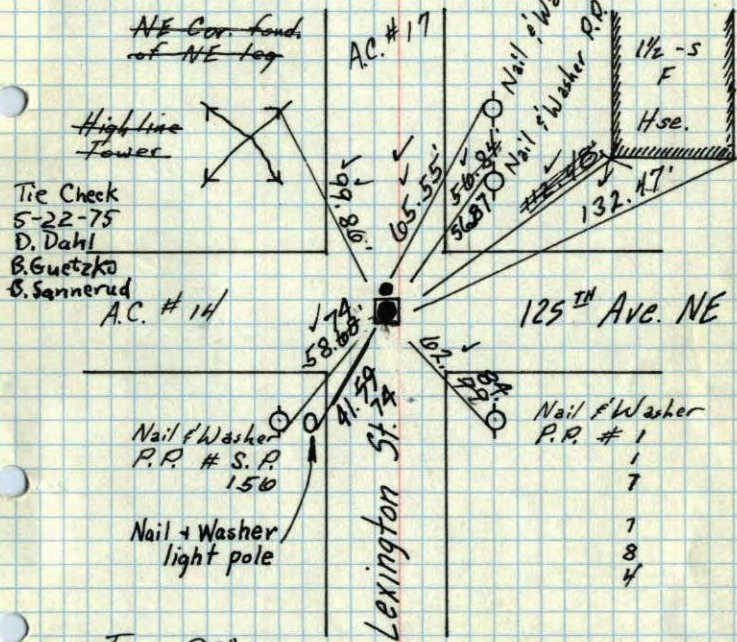
Cone. Mon.
down 0.7'
R.R. Spike on N. PK'S 2.00' N+E.

Set short Cast Iron Monument flush on top of broken Concrete. Aug. 10, 1970

D. Powell
R. Brien
B. Olson

Tie Check
July 16, 1968
D. Powell
P. Pich

Tie Check
Aug. 24, 1971
B. Olson
J. Boettcher



Tie Check
5-22-75
D. Dahl
B. Guetzko
B. Sannerud

A.C. #14

Nail & Washer
P.P. # S.P.
150

Nail & Washer
light pole

Nail & Washer
P.P. # 1

7

1

8

4

Temp 90°

Dennis Potter
Ralph Robinson

9/1/60

Retie 7/6/64

M. D. Anderson
R. Carlson
N. Livgard

TEMPERATURE CORRECTED
AND HORIZONTALLY
TAPED MEASUREMENTS

ROLAND W. ANDERSON
COUNTY SURVEYOR
ANOKA COUNTY, MINNESOTA

14
SW Cor. Sec 1 - T31 - R23

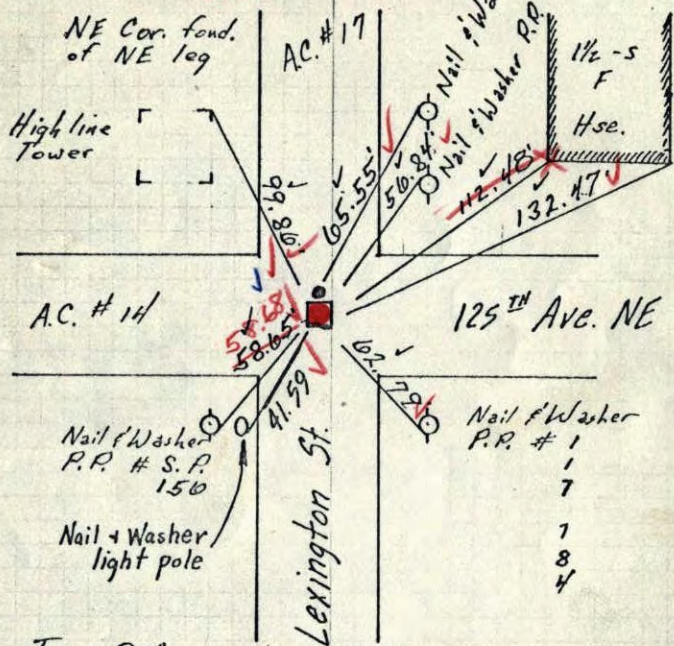
Cone. Mon.
down 0.7'
R.R. Spike on N.

P.K. nail on surface

Tie Check
July 16, 1968
D. Powell
P. Pich

Set C.I. Mon.
flush on top of
broken concrete.

8/10/70
#10-80
D. Powell
R. Brien
B. Olson



Temp 90°

Dennis Potter
Ralph Robinson

9/1/60

Retie 7/6/64

M. D. Anderson
R. Carlson
N. Livgard

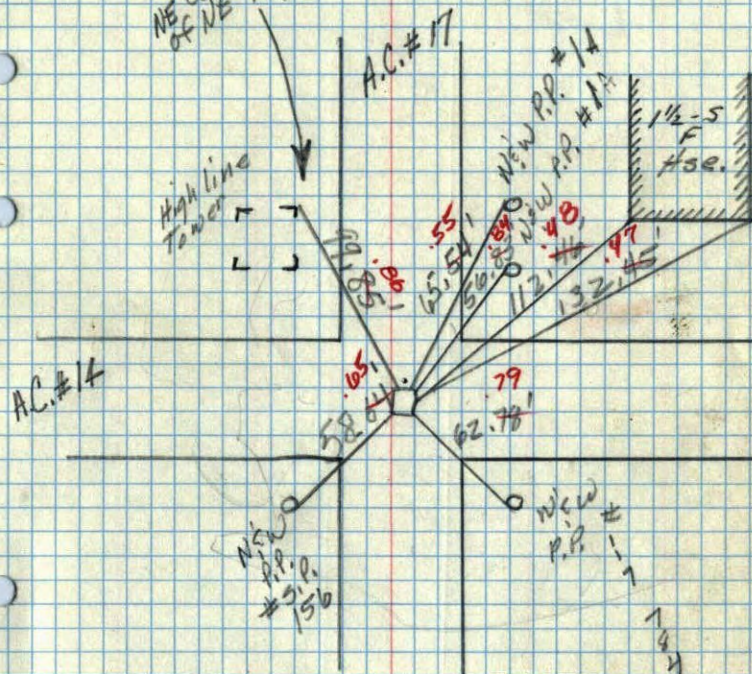
TEMPERATURE CORRECTED
AND HORIZONTALLY
TAPED MEASUREMENTS

ROLAND W. ANDERSON
COUNTY SURVEYOR
ANOKA COUNTY, MINNESOTA

SW Cor. Sec 1, T31, R23

Cone. Mon.
down .7'
R.R. Spike on N

NE Cor. foundation
of NE leg

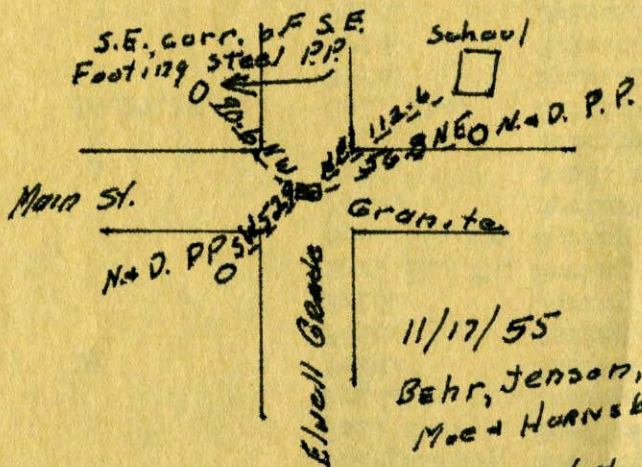


19/8/100

TC

Temp. 90°
Dennis Potter
Ralph Robinson

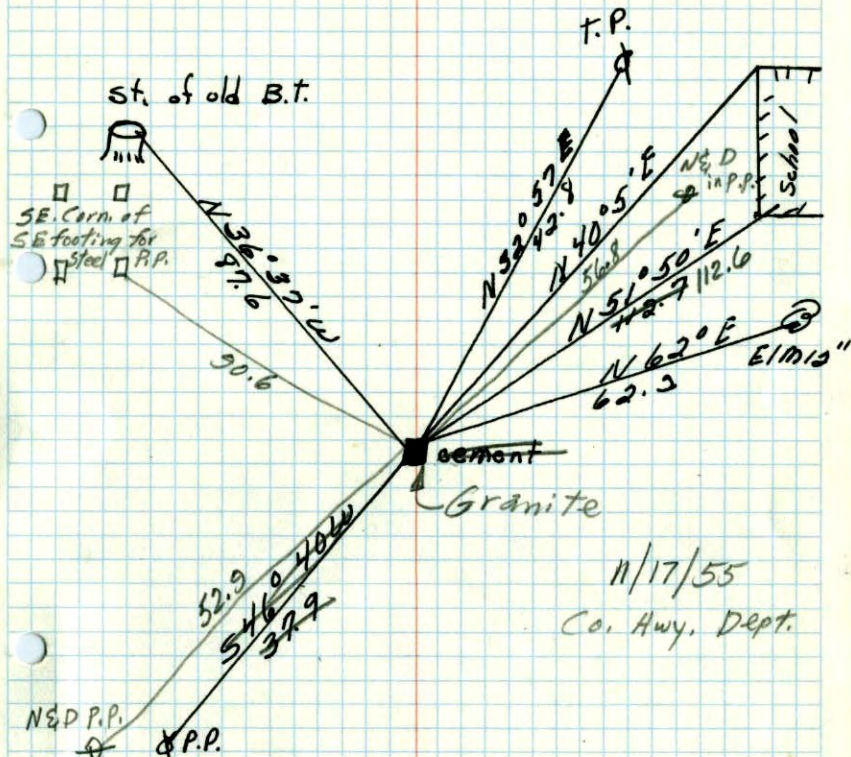
SW. Cor. Sec. 1. Blaine
T. 31 R. 23



UNCOVERED &
RE TIED

SW corner of Sec. 1 T. 31 R. 23

Cement down 5" in \pm roads N-S-E-W



Apr. 20, 1943
H. P. Coetweight