

CERTIFICATE OF LOCATION OF GOVERNMENT CORNER

County of Anoka

State of Minnesota

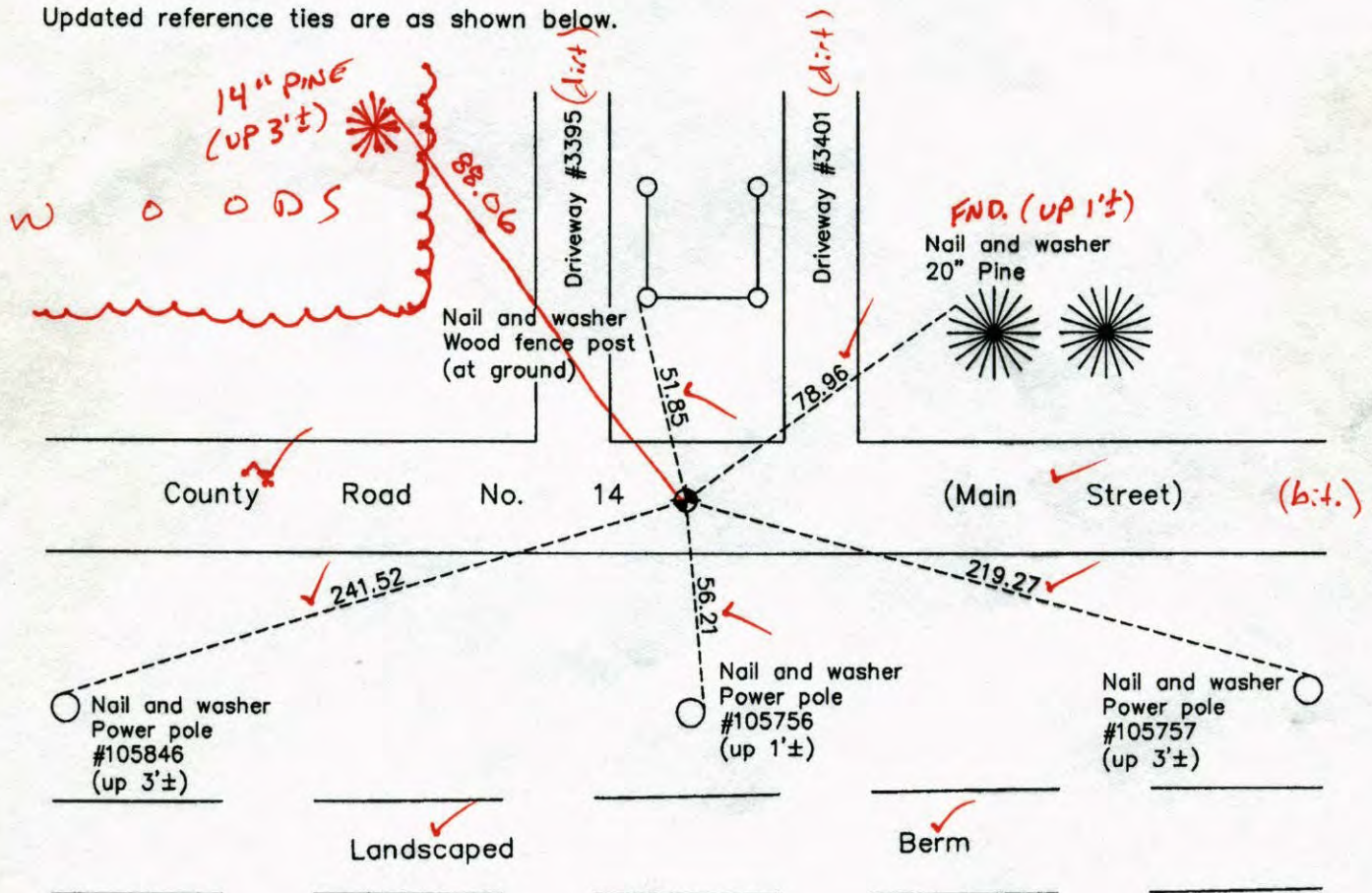
Southeast Corner of Sec. 3 Township 31 Range 23

On the 7th day of March, 1962, the described corner was evidenced by a concrete monument

and to perpetuate the location of said corner, at the exact location thereof, a permanent marker was placed consisting of a cast iron monument

AND on the 13th day of July, 2010, said permanent marker was found, raised to the surface after construction and the ties were updated

Updated reference ties are as shown below.



N
W ANOKA COUNTY SURVEYOR E
S

Revision Date
8/31/10

N.A.D. 1983 Coordinates
(1996 Adjustment)

County Project Coordinates	
Northing	158934.3738
Easting	521489.1999
Date	9/02/98

I hereby certify that this United States public land survey monument record is correct and complete to the best of my knowledge and belief.

Larry D. Hoium Date 8/31/10

Larry D. Hoium, Anoka County Surveyor
Minnesota License Number 18165

VRS 3DQ = 0.05 N = 158934.3571 E = 521489.1580

CERTIFICATE OF LOCATION OF GOVERNMENT CORNER

County of Anoka

State of Minnesota

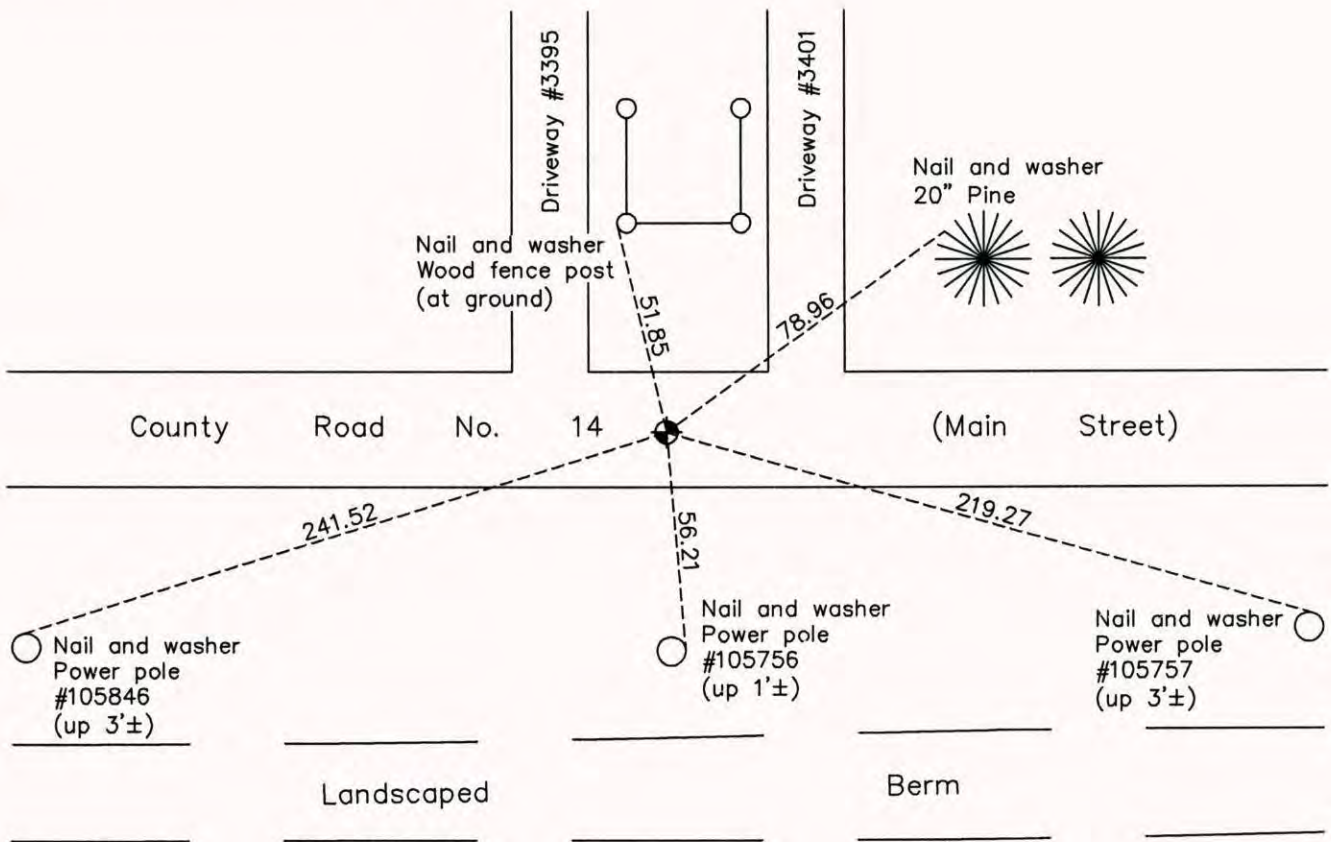
Southeast Corner of Sec. 3 Township 31 Range 23

On the 7th day of March, 1962, the described corner was evidenced by a concrete monument

and to perpetuate the location of said corner, at the exact location thereof, a permanent marker was placed consisting of a cast iron monument

AND on the 13th day of July, 2010, said permanent marker was found, raised to the surface after construction and the ties were updated

Updated reference ties are as shown below.



Revision Date
8/31/10

N.A.D. 1983 Coordinates
(1996 Adjustment)

County Project Coordinates	
Northing	158934.3738
Easting	521489.1999
Date	9/02/98

I hereby certify that this United States public land survey monument record is correct and complete to the best of my knowledge and belief.

Larry D. Hoium Date 8/31/10

Larry D. Hoium, Anoka County Surveyor

Minnesota License Number 18165

CERTIFICATE OF LOCATION OF GOVERNMENT CORNER

County of Anoka State of Minnesota

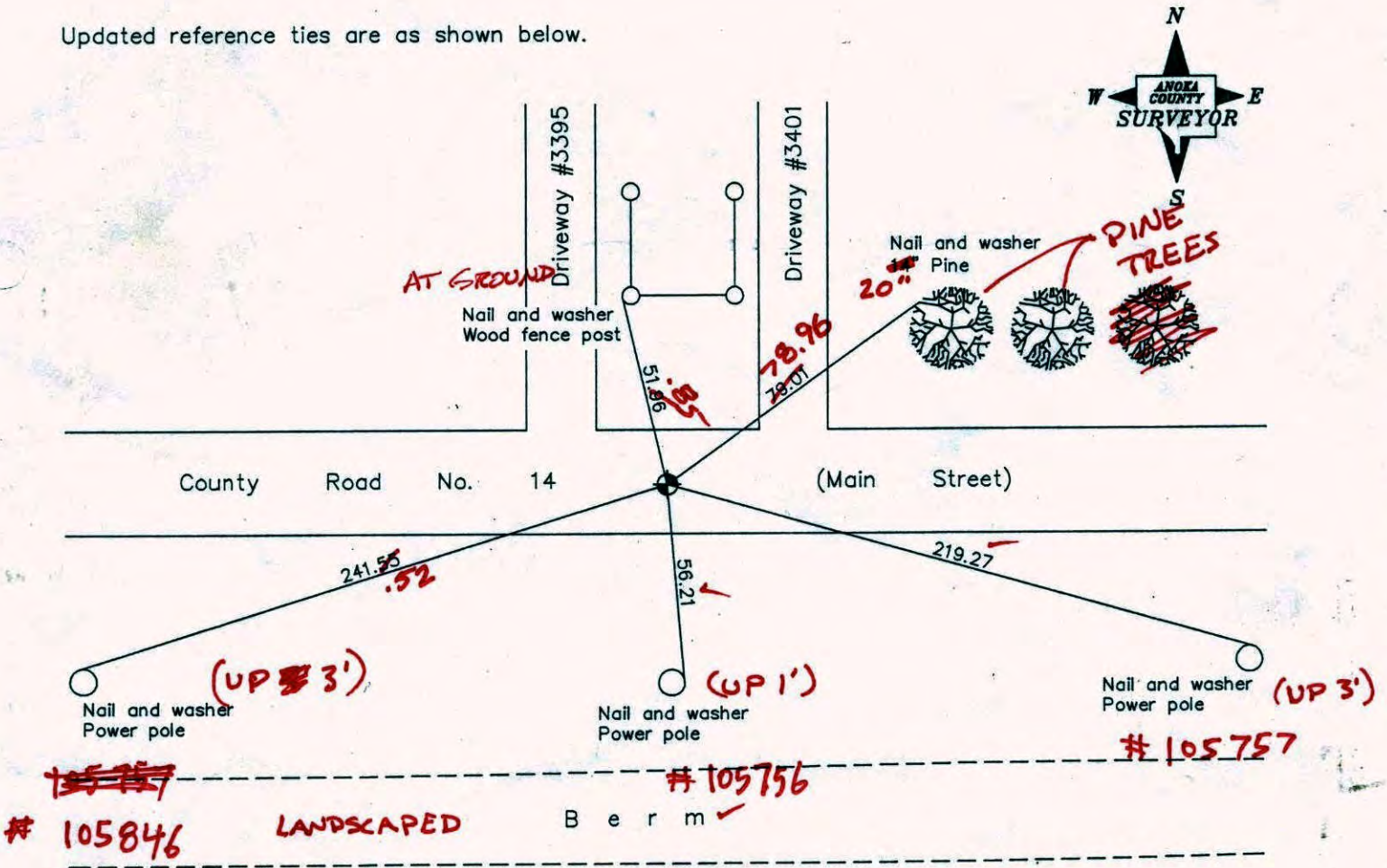
Southeast Corner of Sec. 3 Township 31 Range 23

On the 7th day of March, 1962, the described corner was evidenced by a concrete monument

and to perpetuate the location of said corner, at the exact location thereof, a permanent marker was placed consisting of a cast iron monument

AND on the 11th day of May, 2006, said permanent marker was found and the ties were updated

Updated reference ties are as shown below.



**7-13-10 UNCOVERED, RAISED + RETIED
JS RK SS SH**

Revised date
9/02/98
7/07/00
5/11/06

N.A.D. 1983 Coordinates (1996 Adjustment)	
County Project Coordinates	
Northing	<u>158934.3738</u>
Easting	<u>521489.1999</u>
Date	<u>9/02/98</u>

I hereby certify that this United States public land survey monument record is correct and complete to the best of my knowledge and belief.

Larry D. Hoium Date 5/11/06

Larry D. Hoium, Anoka County Surveyor

Minnesota License Number 18165

~~# 105757~~
105846

LANDSCAPED

B e r m ✓
105756

105757

CERTIFICATE OF LOCATION OF GOVERNMENT CORNER

County of Anoka

State of Minnesota

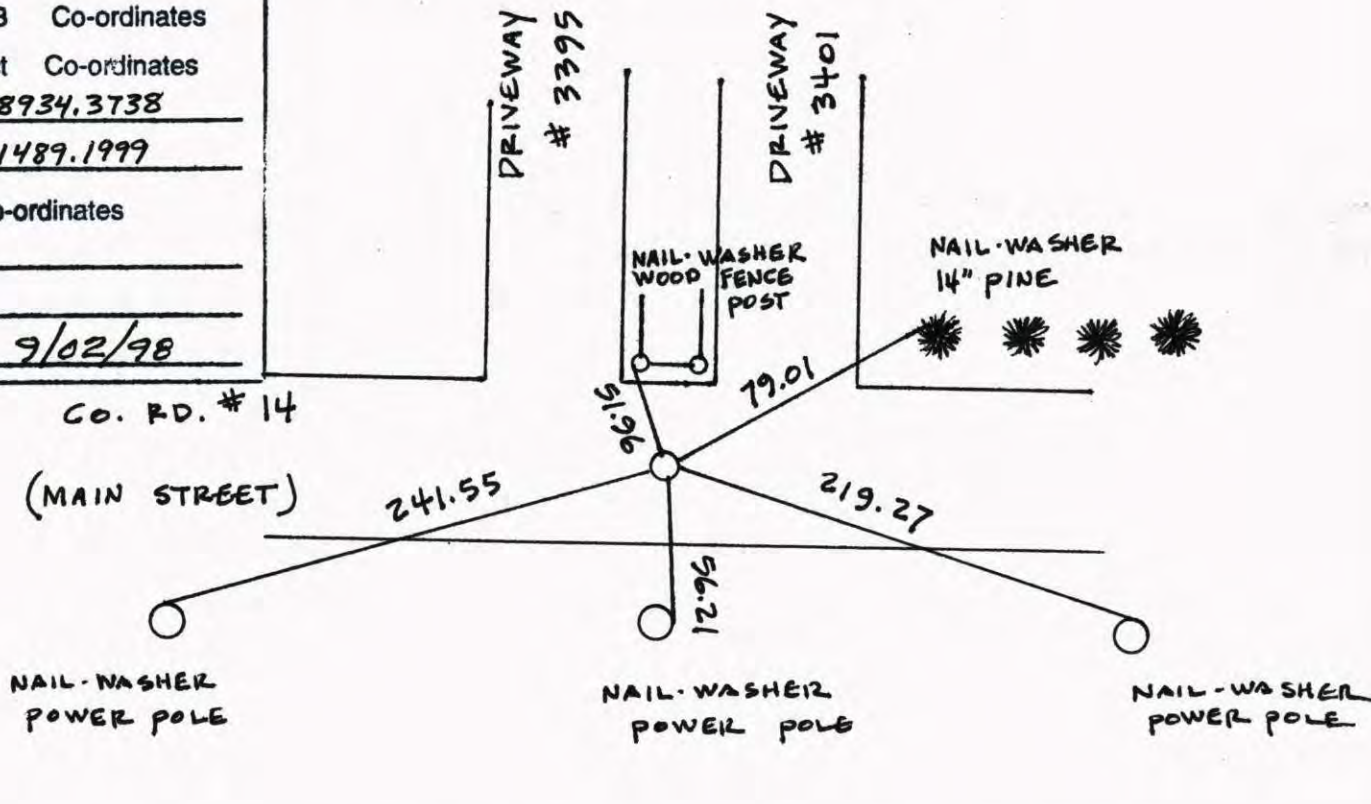
SOUTHEAST Corner of Sec. 3 Township 31 Range 23

I hereby certify that on the 7TH day of MARCH, 1962, I found the described corner which was evidenced by CONCRETE MONUMENT

and I further certify that to perpetuate the location of said corner, I did, at the exact location thereof, place a permanent marker consisting of CAST IRON MONUMENT

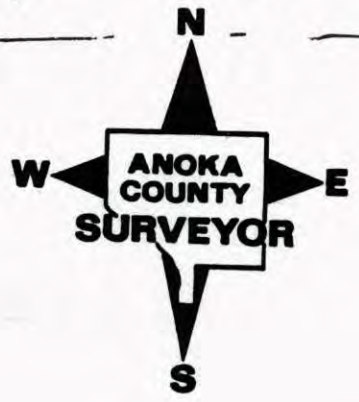
which reference or witness monuments are located in the manner following:

N.A.D.	1983	Co-ordinates
County	Project	Co-ordinates
Northing	<u>158934.3738</u>	
Easting	<u>521489.1999</u>	
State Plane Co-ordinates		
Y	_____	
X	_____	
Date	<u>9/02/98</u>	



B E R M

Revised date	Revised date	Revised date
<u>8-2-95</u>		
<u>9-2-98</u>		
<u>7-7-00</u>		
<u>5-11-06</u>		



CERTIFICATE OF LOCATION OF GOVERNMENT CORNER

County of Anoka

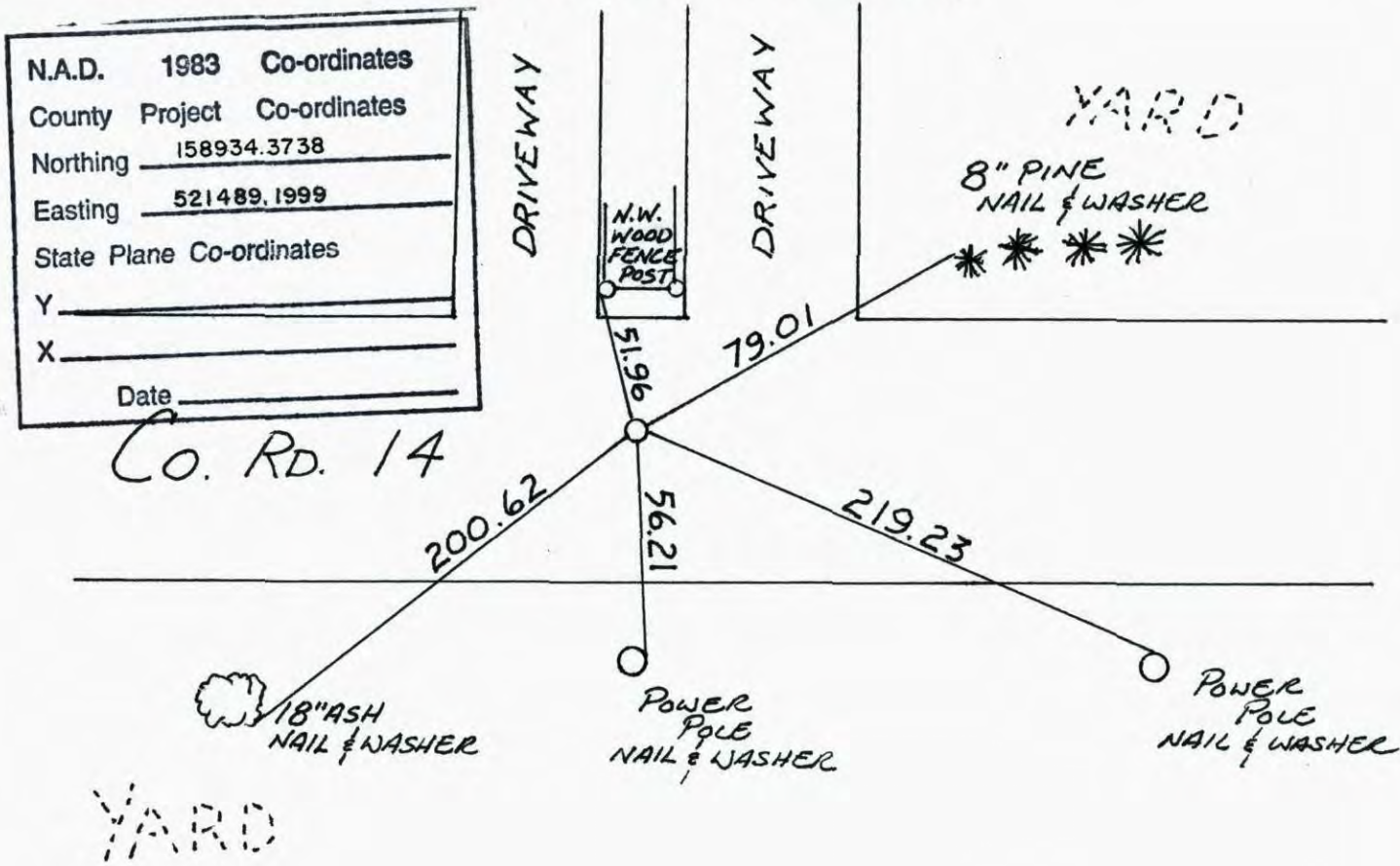
State of Minnesota

SOUTHEAST Corner of Sec. 3 Township 31 Range 23

I hereby certify that on the 7 day of MARCH, 1962 I found the described corner which was evidenced by CONCRETE MON.

and I further certify that to perpetuate the location of said corner, I did, at the exact location thereof, place a permanent marker consisting of CAST IRON MON.

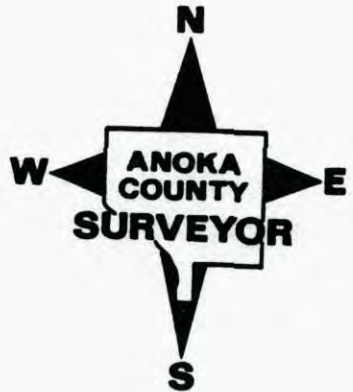
which reference or witness monuments are located in the manner following:



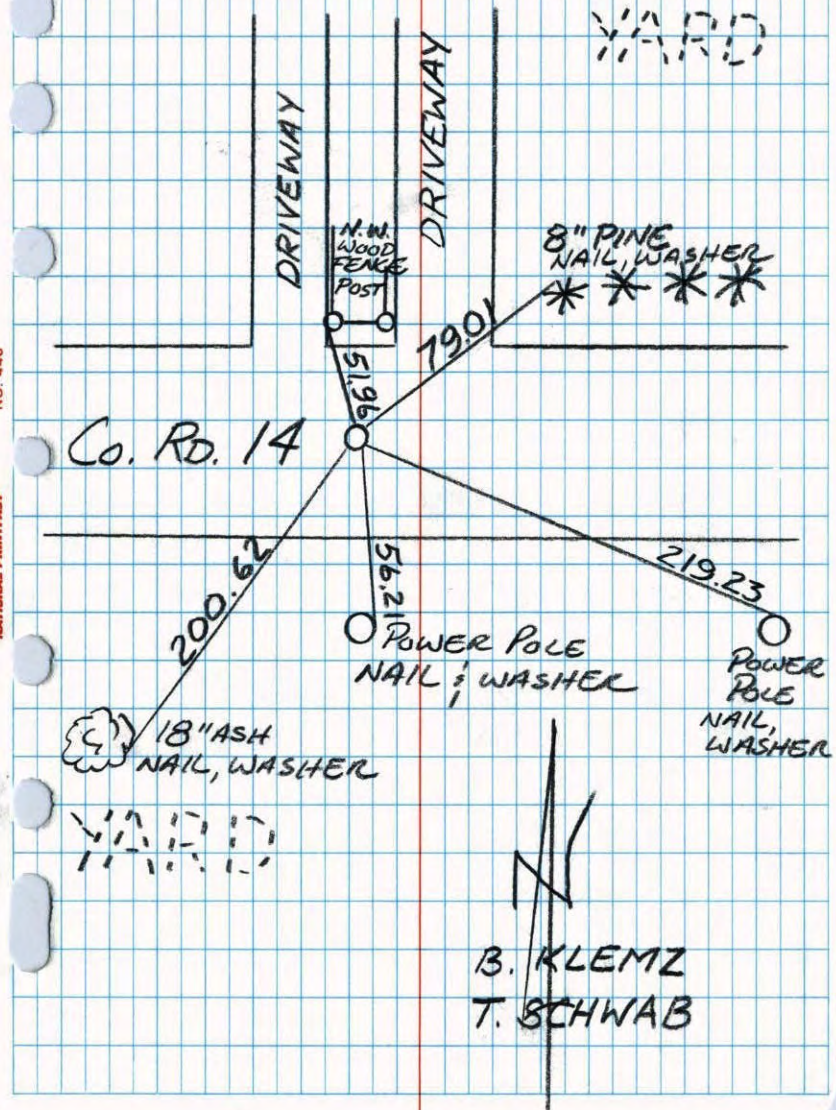
N.A.D.	1983	Co-ordinates
County	Project	Co-ordinates
Northing	158934.3738	
Easting	521489.1999	
State Plane Co-ordinates		
Y	_____	
X	_____	
Date	_____	

Co. Rd. 14

Revised date	Revised date	Revised date
8-2-95		
9-2-98		
7-7-00		

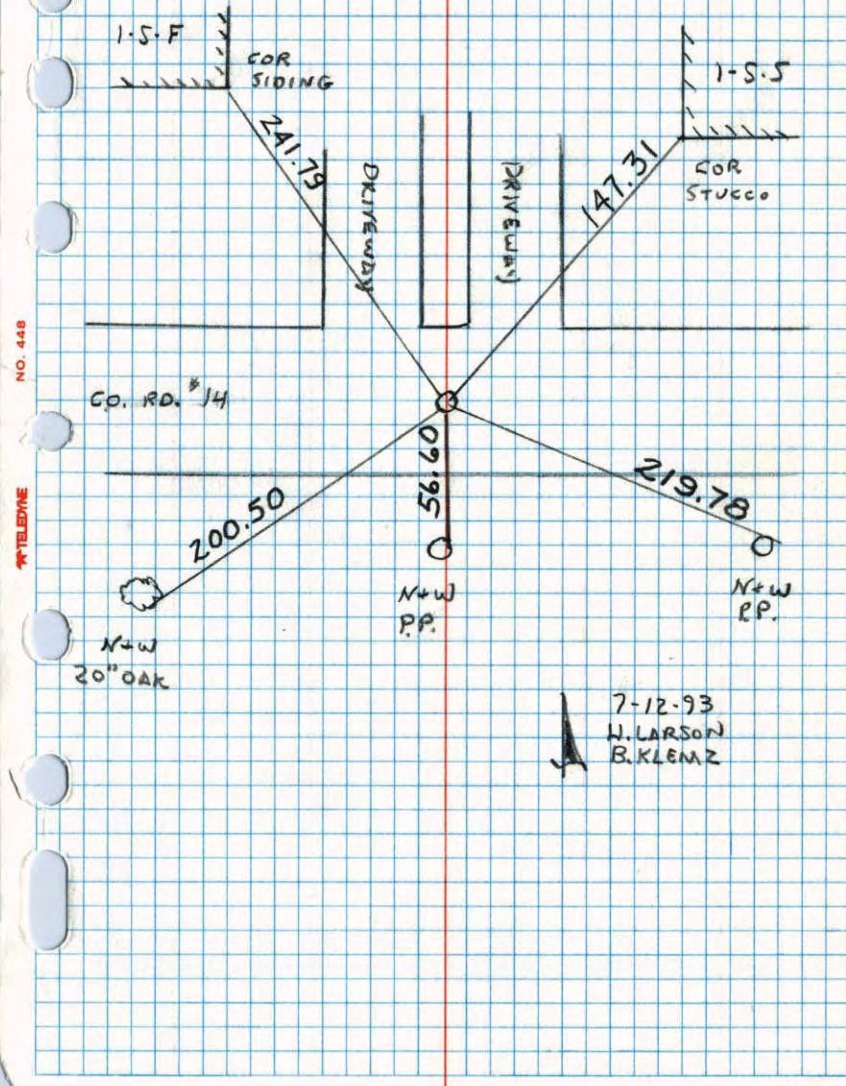


SOUTHEAST COR. SEC. 3 T31 R23
RETIED CAST IRON MON.



NATIONAL PRINTER NO. 446

S.E. CORNER SECTION 3 T31 R23
RESET AND RETIED AFTER CONSTRUCTION
C.I. FLUSH AND ON 8

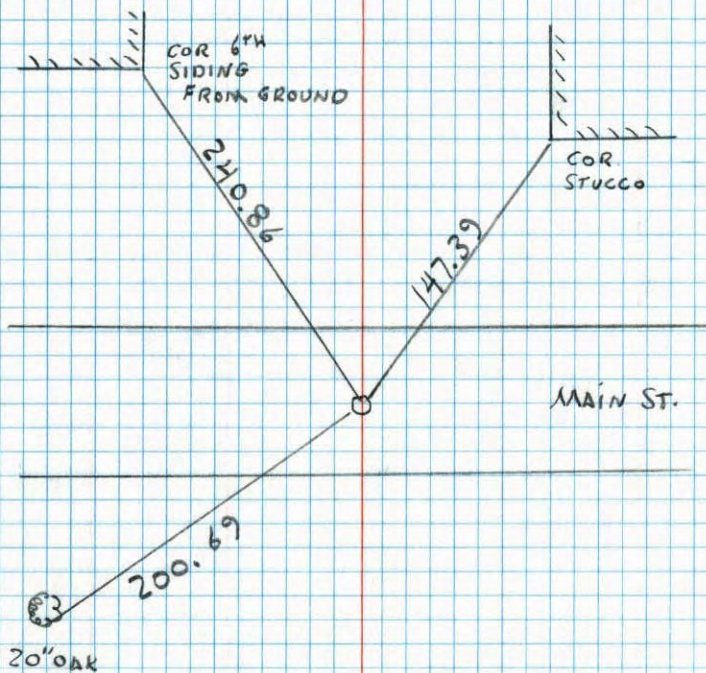


NATIONAL PRINTER NO. 446

SOUTHEAST COR. SECTION 3 T31 R23

TIED FOR CONSTRUCTION

9-1-92 N. LARSON B. KLEMB M. STEWART

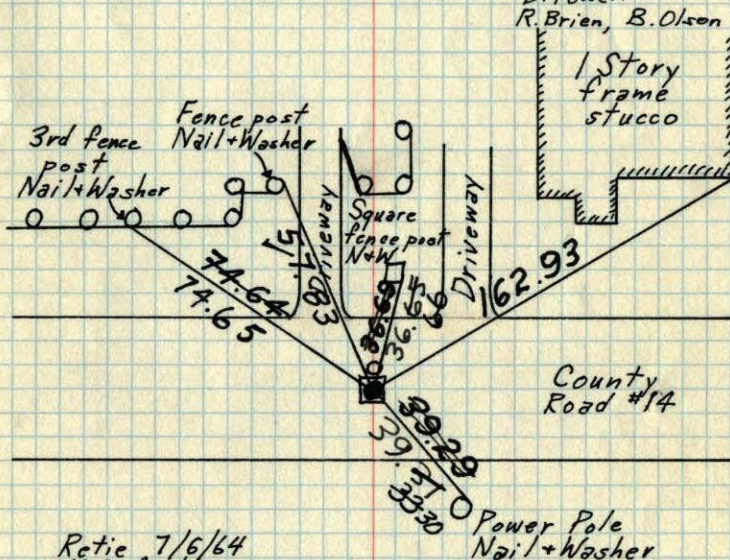


SE Cor. Sec. 3-T31-R23

Found Concrete Monument (top broken off)

down 1 foot. Placed 1/2" Iron Pipe on North side.

March 7, 1962 Set short Cast Iron Monument
 M.D. Anderson flush on top of broken concrete.
 Welfare Help 1/2 South of E. PK Nails 2.00'
 North + East. August 10, 1970
 D. Powell
 R. Brien, B. Olson



Retie 7/6/64
 M. D. Anderson
 R. Carlson
 N. Livgard

Tie Check
 July 16, 1968
 D. Powell
 P. Pich

TIE CHECK
 6-5-80
 B. STEPHENS
 P. ROSS
 P. HORNBY

Tie Check
 Aug. 24, 1971
 B. Olson
 J. Boettcher

TIE CHECK
 10 AUG 77
 R. SANNERUD
 S. BRIEN
 J. STEPHENS

TEMPERATURE CORRECTED
 AND HORIZONTALLY
 TAPED MEASUREMENTS

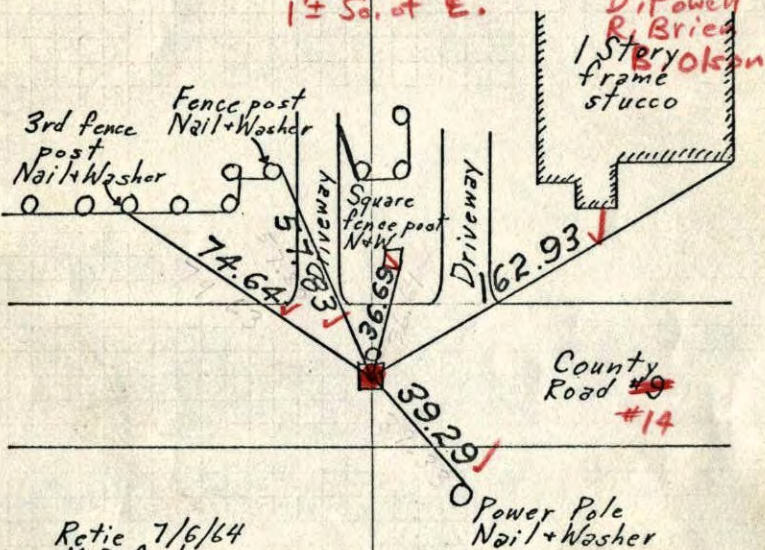
ROLAND W. ANDERSON
 COUNTY SURVEYOR
 ANOKA COUNTY, MINNESOTA

SE Cor. Sec. 3-T31-R23

Found Concrete Monument (top broken off)
down 1 foot. Placed 1/2" Iron Pipe on North side.

March 7, 1962
M.D. Anderson
Welfare Help

Set short C.I. Mon.
flush on top of
broken concrete. 8/10/70
1 1/2 So. of E.



Retie 7/6/64
M.D. Anderson
R. Carlson
N. Livgard

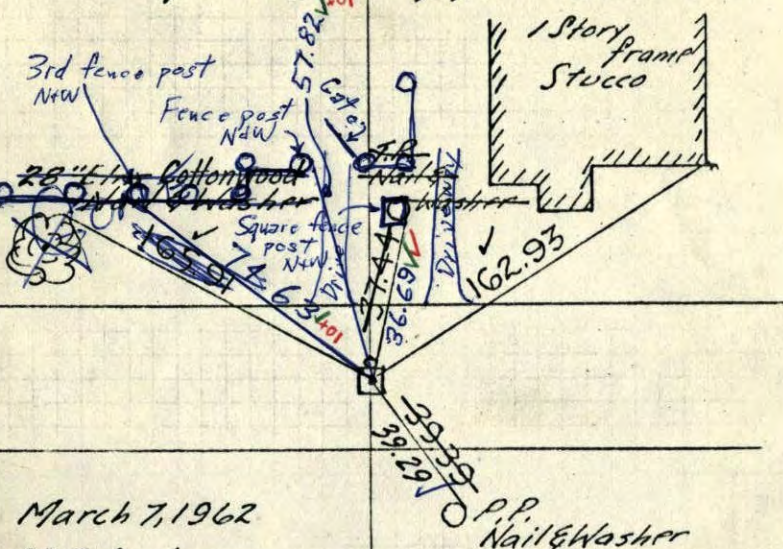
Tie Check
July 16, 1968
D. Powell
P. Pich

TEMPERATURE CORRECTED
AND HORIZONTALLY
TAPED MEASUREMENTS

ROLAND W. ANDERSON
COUNTY SURVEYOR
ANOKA COUNTY, MINNESOTA

S.E. Cor. Sec. 3-31-23

Found Conc. Monument (top broken off)
down 1 foot
placed 1/2" Iron pipe on North Side



March 7, 1962
M.D. Anderson
Welfare help

7/16/68
#7-83
D. Powell
P. Pich

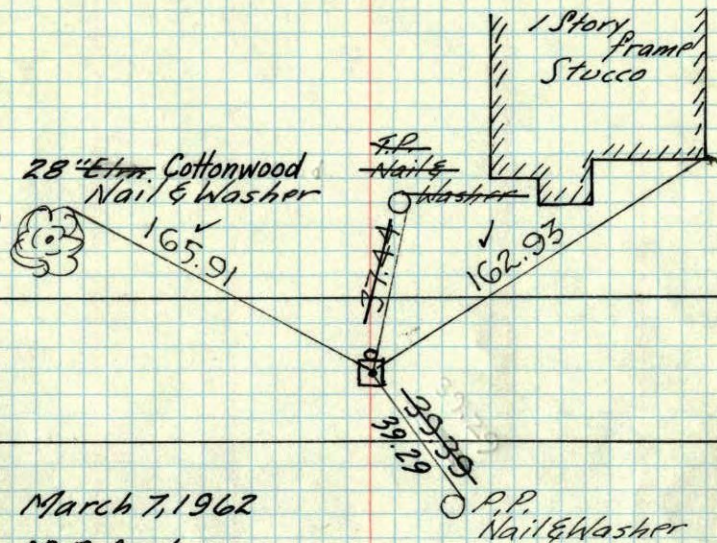
TEMPERATURE CORRECTED
AND HORIZONTALLY
TAPED MEASUREMENTS

Retie 7/6/64
M.D. Anderson
R. Carlson
N. Livgard

ROLAND W. ANDERSON
COUNTY SURVEYOR
ANOKA COUNTY, MINNESOTA

S.E. 1/4 Cor. Sec. 3-31-23

found Conc. Monument (top broken off)
down 1 foot
placed 1/2" iron pipe on North Side



March 7, 1962
M.D. Anderson
&
Welfare help

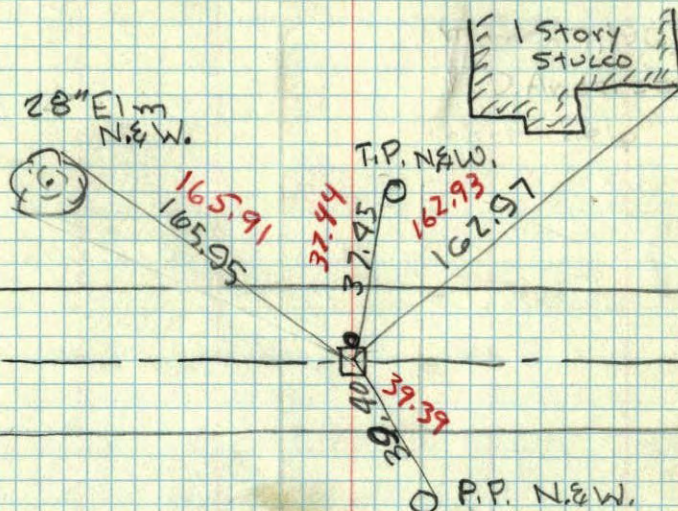
**TEMPERATURE CORRECTED
AND HORIZONTALLY
TAPED MEASUREMENTS**

Retie 7/6/64
M. D. Anderson
R. Carlson
N. Livgard

**ROLAND W. ANDERSON
COUNTY SURVEYOR
ANOKA COUNTY, MINNESOTA**

SE 1/4 Cor. Sec. 3-31-23

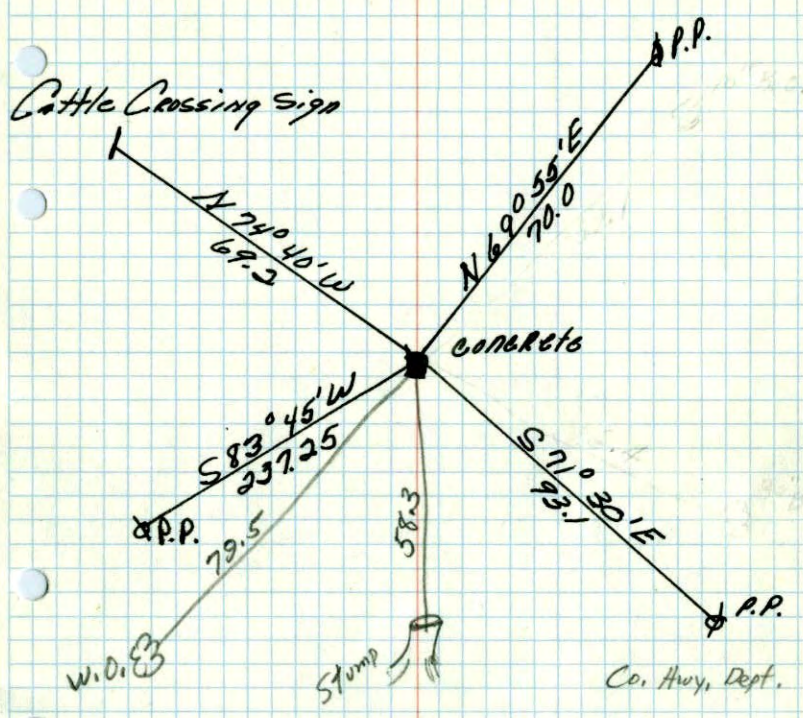
found conc. (top broken off)
down 1 foot
placed 1/2" iron on north side



+30°
March 7, 1962
M.D. Anderson
2 men from
welfare

S³E
 SW CORNER of Sec. 27. 31 R 23
 Concrete Monument

15³ ✓



Sept 3, 1948
 Cartwright

SE cor. Sec. 3 Blaine
 T31 R23

