

CERTIFICATE OF LOCATION OF GOVERNMENT CORNER

County of Anoka

State of Minnesota

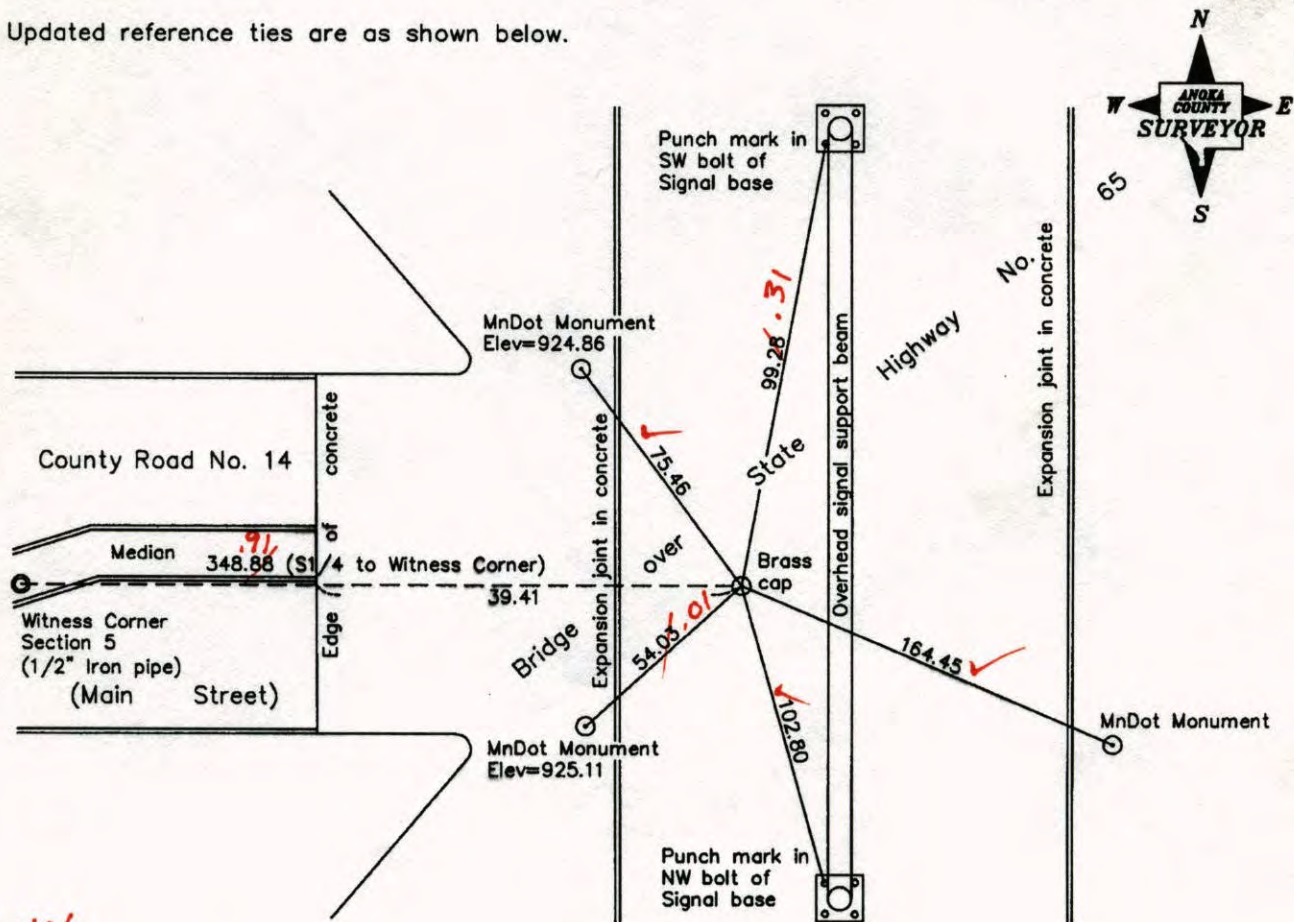
South 1/4 Corner of Sec. 5 Township 31 Range 23

On the 30th day of November, 1959, the described corner was evidenced by a P. K. Nail

and to perpetuate the location of said corner, at the exact location thereof, a permanent marker was placed consisting of a cast iron monument

AND on the 17th day of April, 2008, said permanent marker was found broken off. Cast iron monument was replaced with a brass cap set flush in concrete bridge deck and ties were updated.

Updated reference ties are as shown below.



6-5-14
BK-55
WILD
T2000

Revised date	
	10/24/90
	7/18/95
	4/17/08

N.A.D. 1983 Coordinates (1996 Adjustment)	
County Project Coordinates	
Northing	159046.4624
Easting	508208.2586
Date	4/17/08

I hereby certify that this United States public land survey monument record is correct and complete to the best of my knowledge and belief.

Larry D. Hoium Date 4/05/10

Larry D. Hoium, Anoka County Surveyor

Minnesota License Number 18165

CERTIFICATE OF LOCATION OF GOVERNMENT CORNER

County of Anoka

State of Minnesota

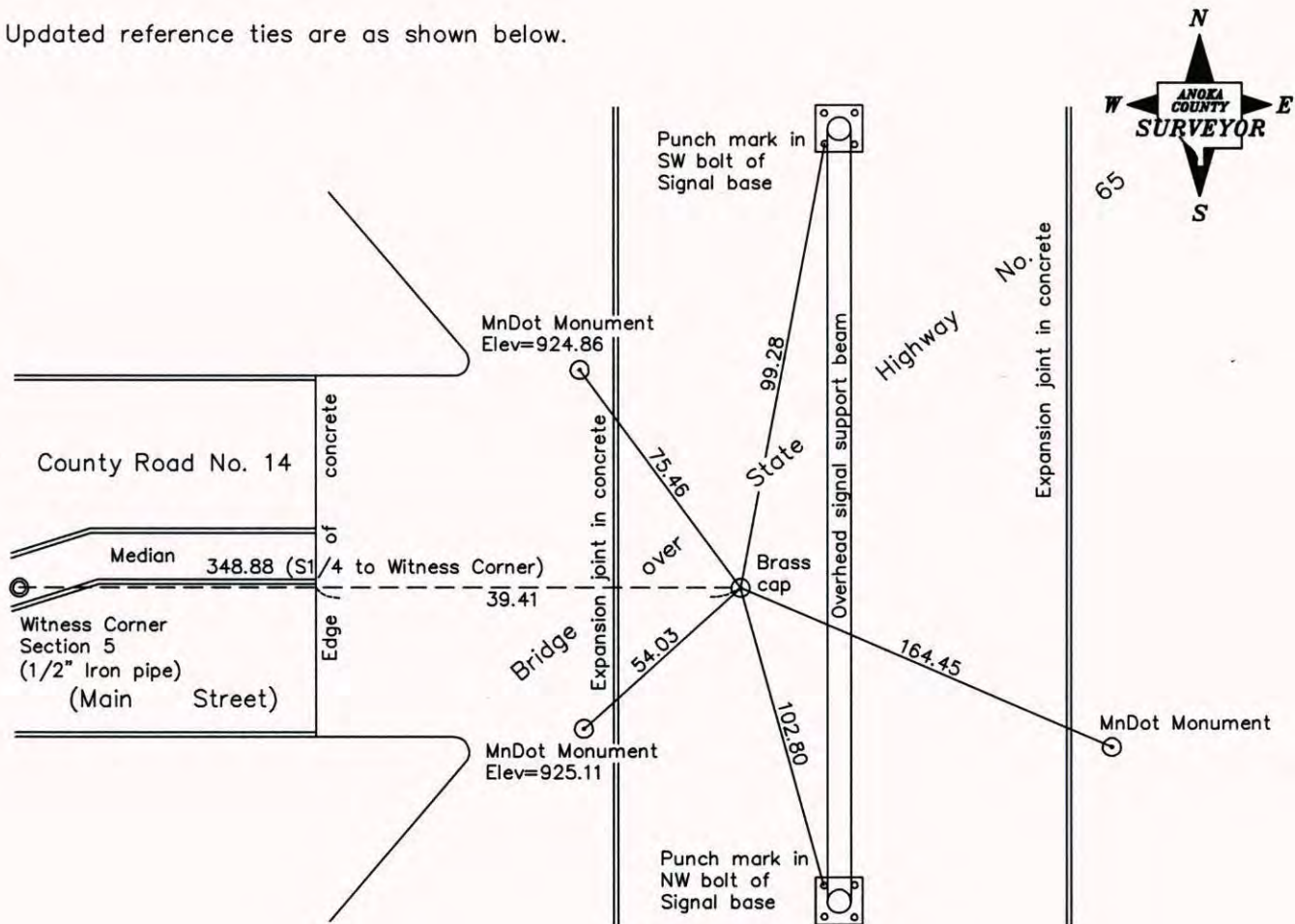
South 1/4 Corner of Sec. 5 Township 31 Range 23

On the 30th day of November, 1959, the described corner was evidenced by a P. K. Nail

and to perpetuate the location of said corner, at the exact location thereof, a permanent marker was placed consisting of a cast iron monument

AND on the 17th day of April, 2008, said permanent marker was found broken off. Cast iron monument was replaced with a brass cap set flush in concrete bridge deck and ties were updated.

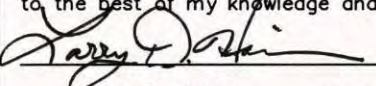
Updated reference ties are as shown below.



Revised date
10/24/90
7/18/95
4/17/08

N.A.D. 1983 Coordinates (1996 Adjustment)	
County Project Coordinates	
Northing	<u>159046.4624</u>
Easting	<u>508208.2586</u>
Date	<u>4/17/08</u>

I hereby certify that this United States public land survey monument record is correct and complete to the best of my knowledge and belief.

 Date 4/05/10
 _____, Anoka County Surveyor
 Minnesota License Number 18165

CERTIFICATE OF LOCATION OF GOVERNMENT CORNER

County of Anoka

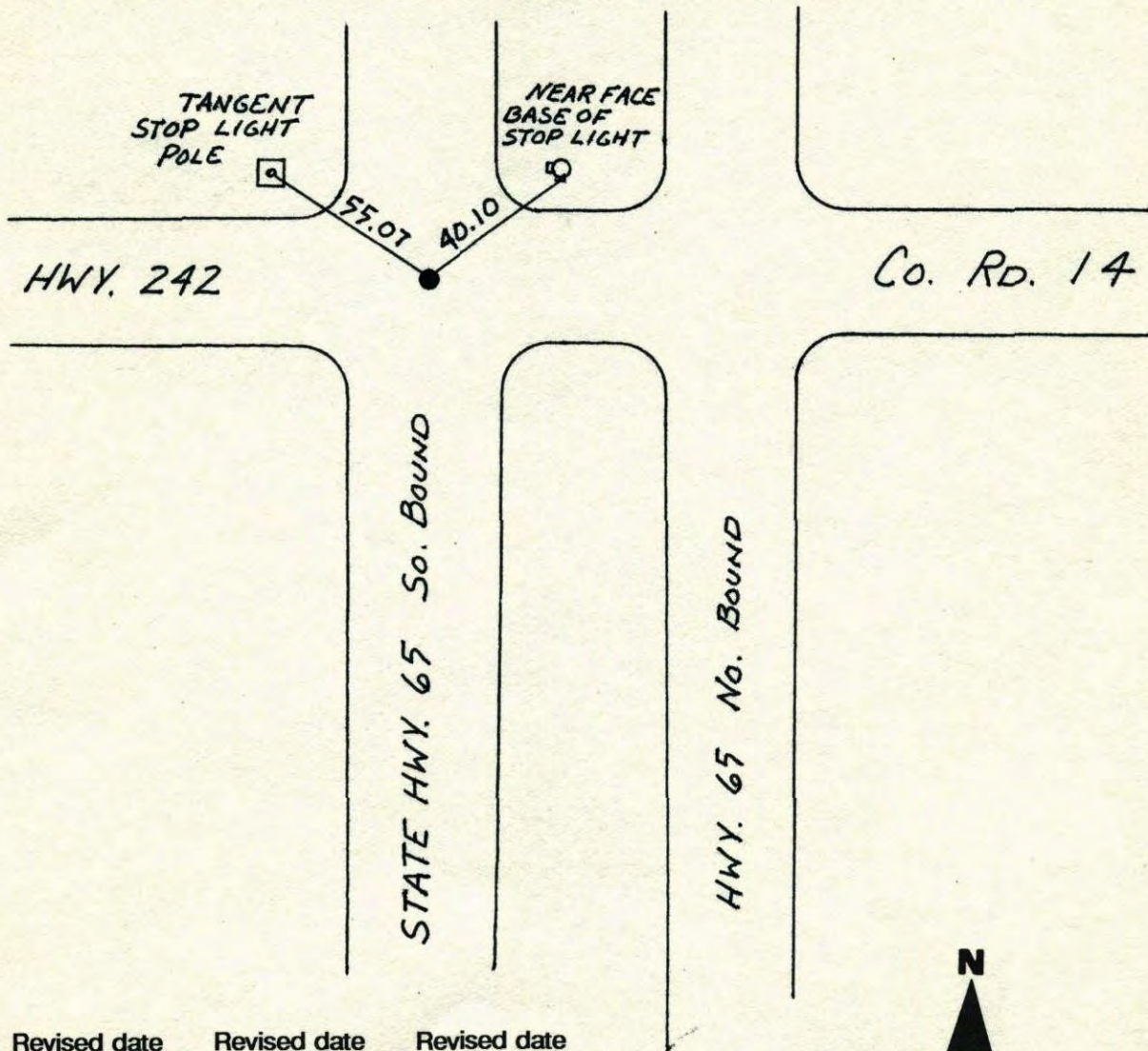
State of Minnesota

SOUTH QTR. Corner of Sec. 5 Township 31 Range 23

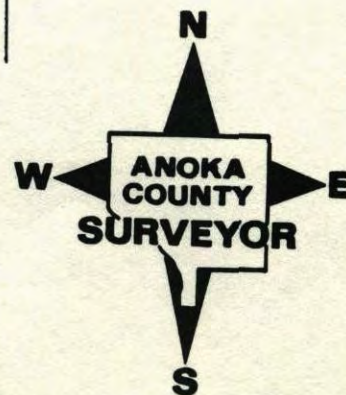
I hereby certify that on the 30 day of Nov., 1959, I found the described corner which was evidenced by P.K.

and I further certify that to perpetuate the location of said corner, I did, at the exact location thereof, place a permanent marker consisting of CAST IRON MON.

which reference or witness monuments are located in the manner following:



Revised date	Revised date	Revised date
10-24-90		
7-18-95		



CERTIFICATE OF LOCATION OF GOVERNMENT CORNER

County of Anoka

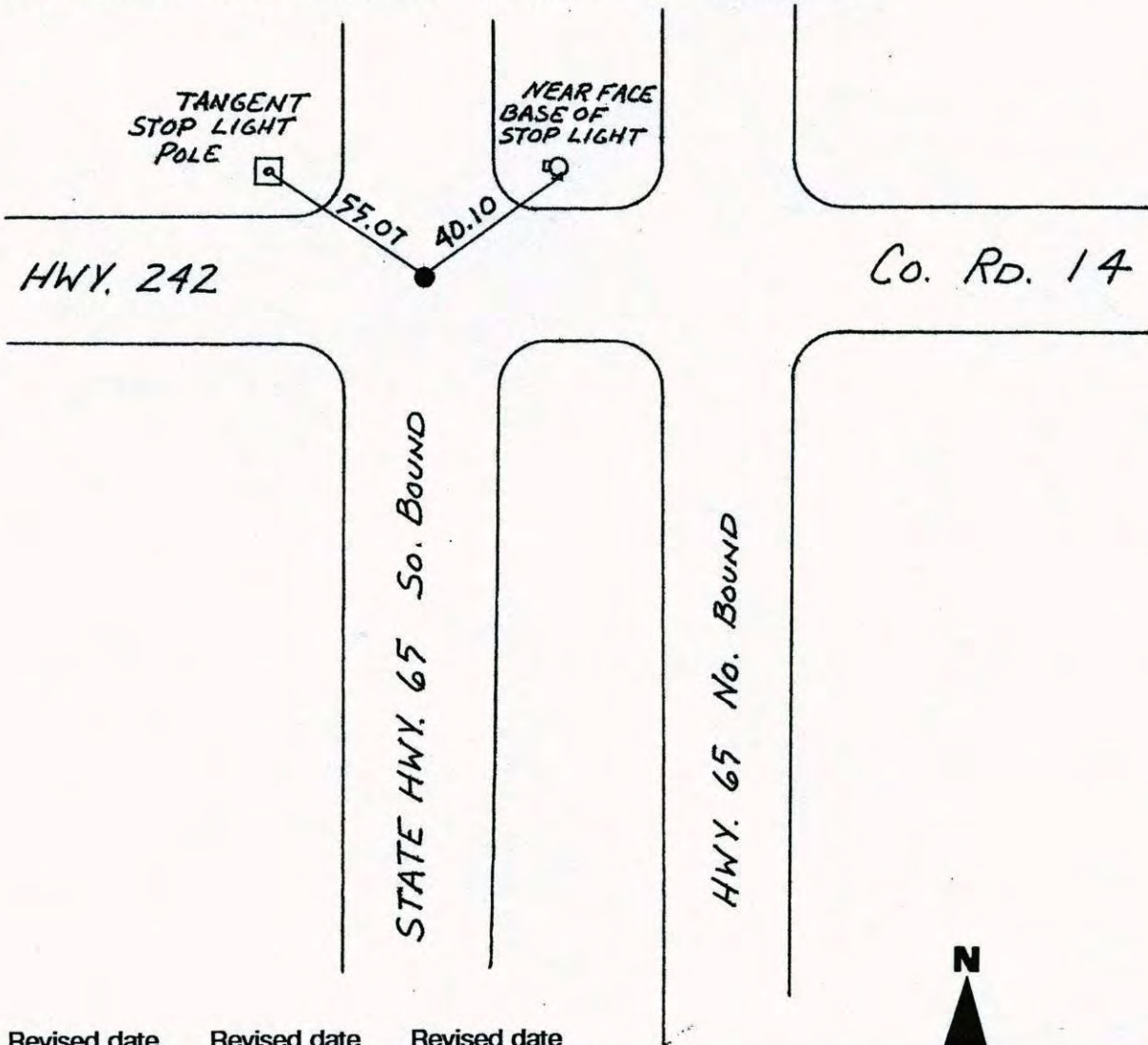
State of Minnesota

SOUTH QTR. Corner of Sec. 5 Township 31 Range 23

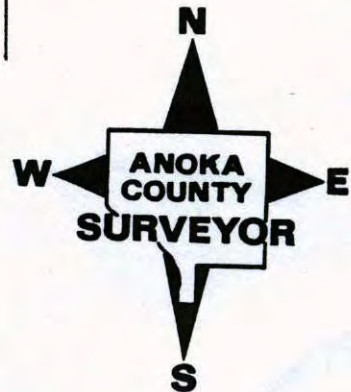
I hereby certify that on the 30 day of Nov., 1959, I found the described corner which was evidenced by P.K.

and I further certify that to perpetuate the location of said corner, I did, at the exact location thereof, place a permanent marker consisting of CAST IRON MON.

which reference or witness monuments are located in the manner following:



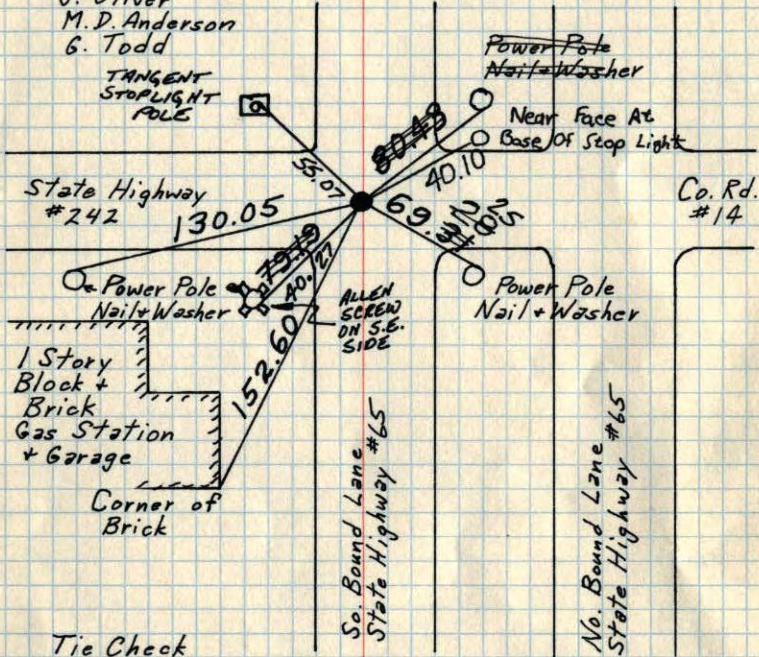
Revised date	Revised date	Revised date
10-24-90		
7-18-95		



$S\frac{1}{4}$ Cor. Sec. 5-T31-R23

Set Cast Iron Monument flush. PK's 2.00'
North + East. Monument 2'± West of Centerline.

Sept. 24, 1962
J. Oliver
M. D. Anderson
G. Todd



Tie Check
Mar. 31, 1970
M. D. Anderson
H. J. Larson
R. A. Olson

TIE CHECK
6-19-80
B. STEPHENS
P. ROSS
P. HORNBY

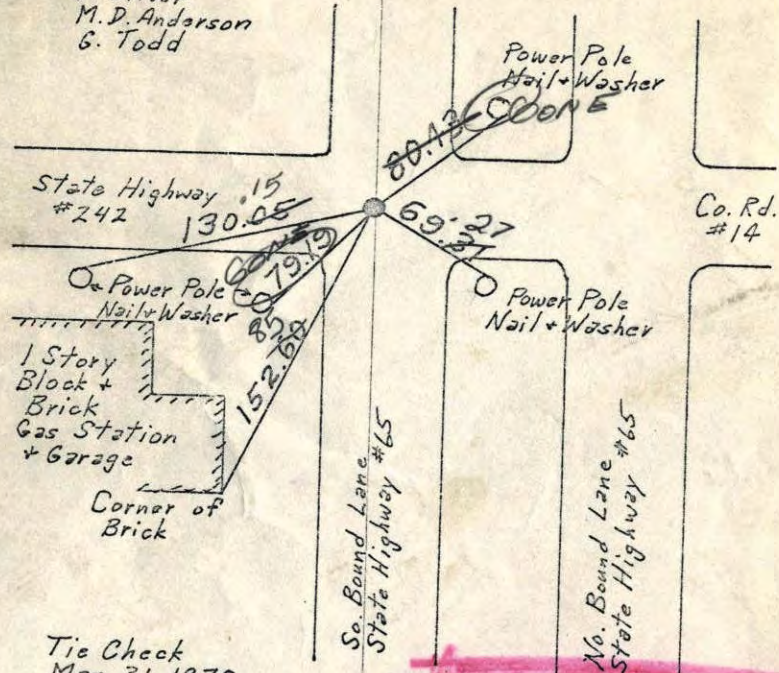
Tie Check
5/16/75
D. Dahl
B. Guetzko
B. Sannerud
J. Boettcher

TEMPERATURE CORRECTED ROLAND W. ANDERSON
AND HORIZONTALLY
TAPED MEASUREMENTS
COUNTY SURVEYOR
ANOKA COUNTY, MINNESOTA

$S\frac{1}{4}$ Cor. Sec. 5-T31-R23

Set Cast Iron Monument flush. PK's 2.00'
North + East. Monument 2'± West of Centerline.

Sept. 24, 1962
J. Oliver
M. D. Anderson
G. Todd



Tie Check
Mar. 31, 1970
M. D. Anderson
H. J. Larson
R. A. Olson

TIE CHECK
NOV. 26, 1971
P. W. BERTLESON
J. M. BOETTCHER
F. WAKS
M. JENSON

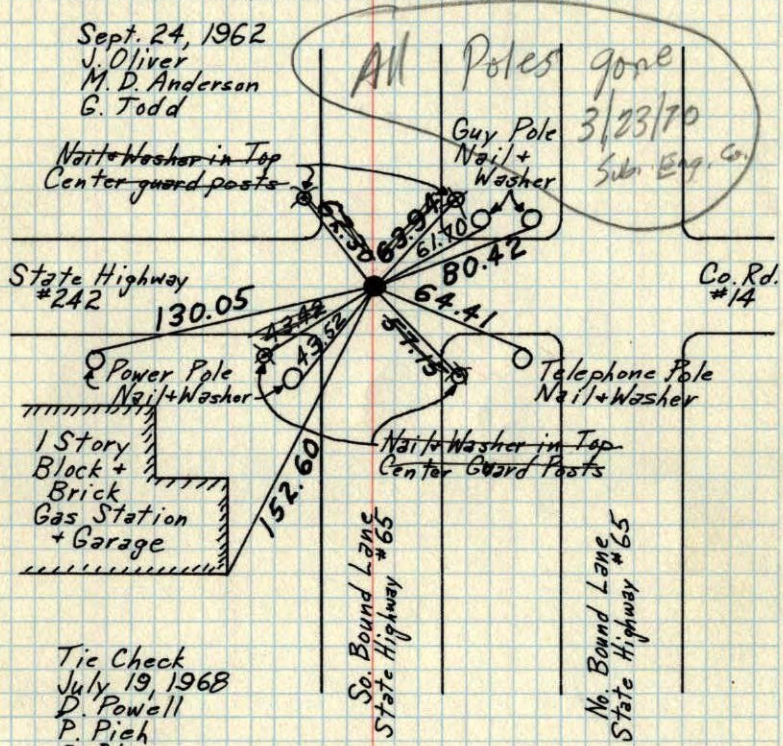
TEMPERATURE CORRECTED ROLAND W. ANDERSON
AND HORIZONTALLY
TAPED MEASUREMENTS
COUNTY SURVEYOR
ANOKA COUNTY, MINNESOTA

1/4 Cor. Sec. 5-T31-R23

Set ~~Head of~~ Cast Iron Monument flush with blacktop. PK's 2.00' North + East.

Cast Iron Monument 2'± West of centerline.

Sept. 24, 1962
J. Oliver
M. D. Anderson
G. Todd



Tic Check
July 19, 1968
D. Powell
P. Pich
R. Olson

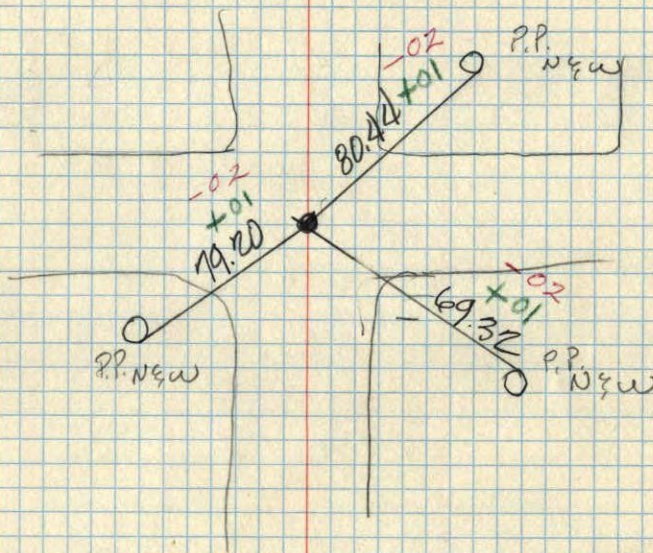
Set Removeable Cast Iron Mon. Aug. 25, 1969
D. Powell
M. D. Anderson
H. Larson
R. Olson

TEMPERATURE CORRECTED AND HORIZONTALLY TAPED MEASUREMENTS
ROLAND W. ANDERSON
COUNTY SURVEYOR
ANOKA COUNTY, MINNESOTA

Additional Ties - Redraw

1/4 Cor. Sec. 5-T31-R23
Raised C.I. Mon. 1 1/2"

Add with Old ties Remaining



March 31, 1970
M.D. Anderson
H. Larson
R.A. Olson
Temp 25° ✓
Tape #10 ✓

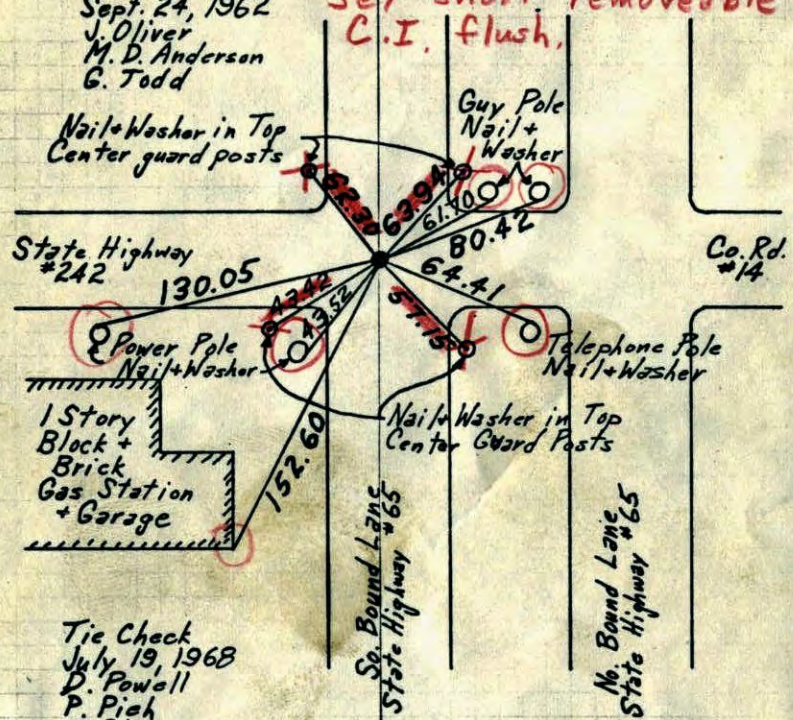
1/4 Cor. Sec. 5-T31-R23

Set Head of Cast Iron Monument flush with blacktop. PK's 2.00' North + East.

Cast Iron Monument 2' West of centerline.

Sept. 24, 1962
J. Oliver
M. D. Anderson
G. Todd

Set short removeable C.I. flush.



Tie Check
July 19, 1968
D. Powell
P. Pich
R. Olson

8/25/69
D. Powell
M. D. Anderson
H. Larson
R. Olson

TEMPERATURE CORRECTED
AND HORIZONTALLY
TAPED MEASUREMENTS

ROLAND W. ANDERSON
COUNTY SURVEYOR
ANOKA COUNTY, MINNESOTA

1/4 Cor. Sec. 5-T31-R23

Set ~~at~~ Cast Iron Monument flush with blacktop. PK's 2.00' North + East.

Cast Iron Monument 2' West of centerline.

Sept. 24, 1962
J. Oliver
M. D. Anderson
G. Todd



State Highway #242 OK 130.05



Tie Check
July 19, 1968
D. Powell
P. Pich
R. Olson

Set Removeable Cast Iron Mon.
See Additional ties

Aug. 25, 1969
D. Powell
M. D. Anderson
H. Larson
R. Olson

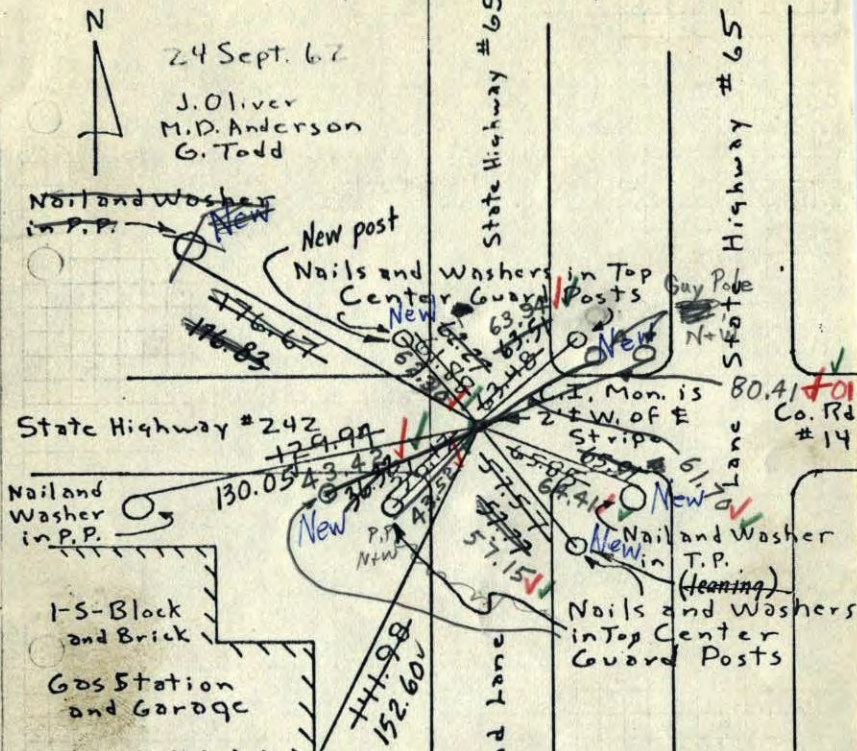
TEMPERATURE CORRECTED
AND HORIZONTALLY
TAPED MEASUREMENTS

ROLAND W. ANDERSON
COUNTY SURVEYOR
ANOKA COUNTY, MINNESOTA

So. 1/4 Cor. Sec. 5, T31, R23

Set Head of Cast Iron Monument Flush with Black Top. P.K. spks. 2' N. + E.

N
24 Sept. 62
J. Oliver
M.D. Anderson
G. Todd



(Station Retie 6/29/64 remodeled)
J. Oliver
R. Carlson
N. Livgard
J. Dunlop

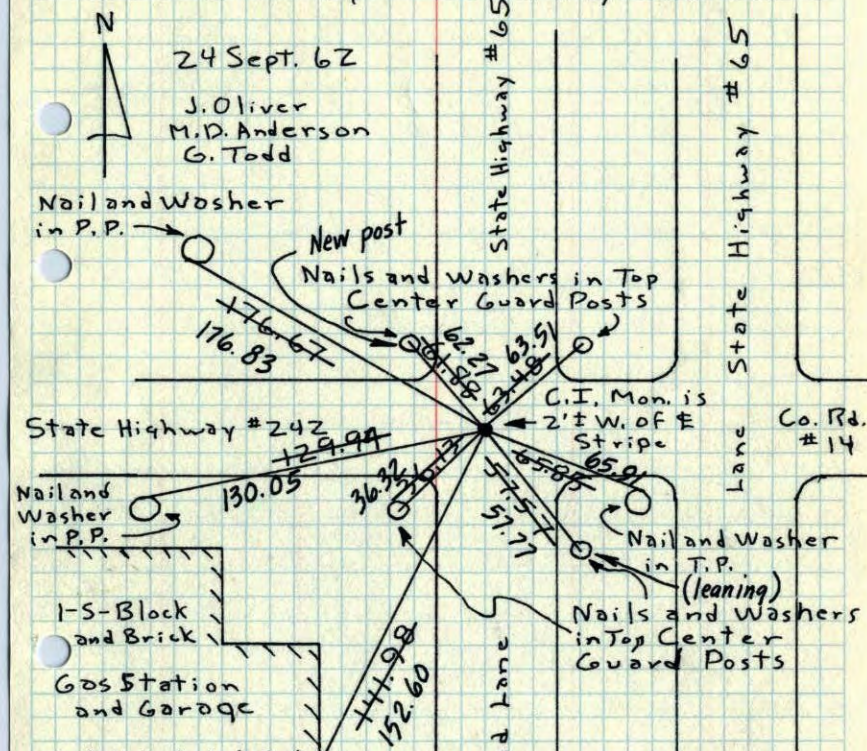
TEMPERATURE CORRECTED AND HORIZONTALLY TAPED MEASUREMENTS

7/19/68
#7-78
D. Powell
R. Olson
P. Pigh
ROLAND W. ANDERSON
COUNTY SURVEYOR
ANOKA COUNTY, MINNESOTA

So. 1/4 Cor. Sec. 5, T31, R23

Set Head of Cast Iron Monument Flush with Black Top. P.K. spks. 2' N. + E.

N
24 Sept. 62
J. Oliver
M.D. Anderson
G. Todd



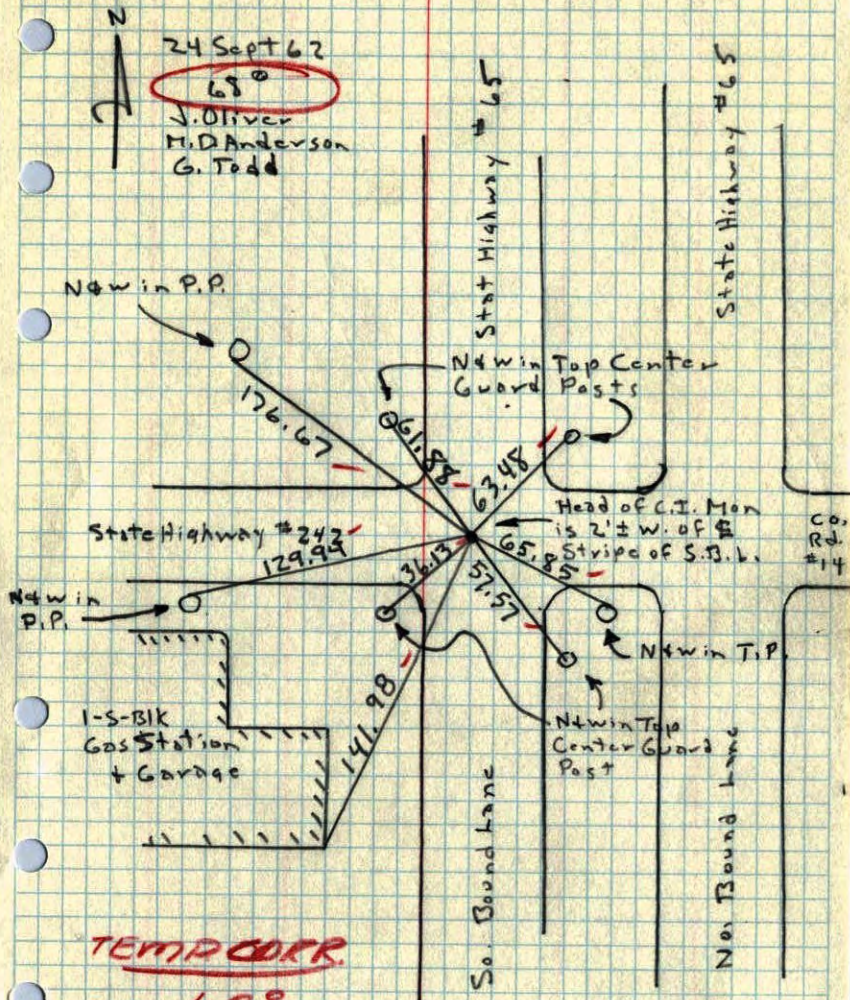
(Station Retie 6/29/64 remodeled)
J. Oliver
R. Carlson
N. Livgard
J. Dunlop

TEMPERATURE CORRECTED AND HORIZONTALLY TAPED MEASUREMENTS

ROLAND W. ANDERSON
COUNTY SURVEYOR
ANOKA COUNTY, MINNESOTA

So 1/4 Cor. Sec. 5, T31, R23

Set Head of C.I. Mon. Flush with Blacktop



TEMP CORR.

68°

11
S 1/4 Cor. of Sec. 5 Blaine Twp. ✓



ANKA Co Hwy Dept.

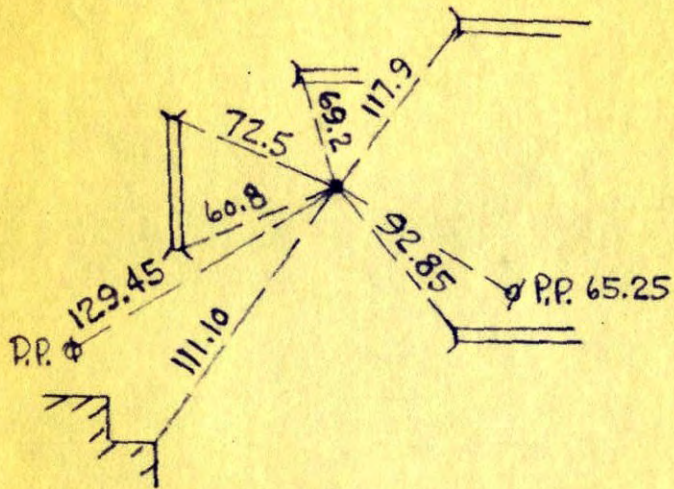
S 1/4 CORNER OF SECTION 5
TOWNSHIP 31, RANGE 23

P.K.

11/30/59

115/3

Have
C.H.



N. C. HOIUM
AND ASSOCIATES, INC.
LAND SURVEYORS

ANOKA, MINNESOTA