

CERTIFICATE OF LOCATION OF GOVERNMENT CORNER

County of Anoka

State of Minnesota

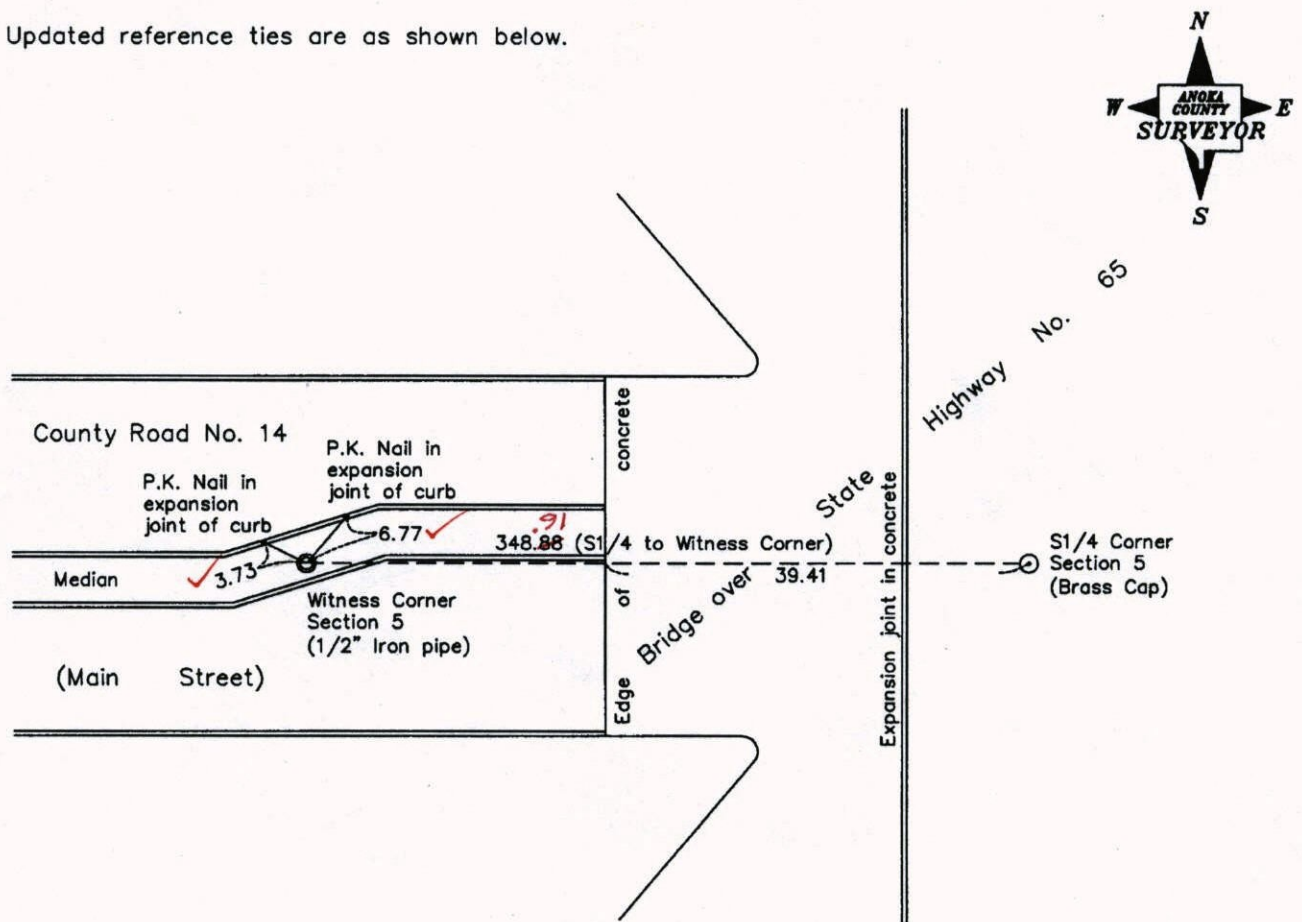
Witness Corner of Sec. 5 Township 31 Range 23
 (On south line of section)

On the 2nd day of June, 2009, the described corner was evidenced by a point set on line
between the South 1/4 corner and the Southwest corner of Section 5

and to perpetuate the location of said corner, at the exact location thereof, a permanent marker
 was placed consisting of a 1/2" iron pipe set flush in concrete median

AND on the ___ day of _____, _____, said permanent marker was _____

Updated reference ties are as shown below.



5-9-14

JS-SS Revised date
 TAPED

6/02/09

N.A.D. 1983 Coordinates (1996 Adjustment)	
County Project Coordinates	
Northing	159043.1337
Easting	507859.3979
Date	6/02/09

I hereby certify that this United States public land survey monument record is correct and complete to the best of my knowledge and belief.

Larry D. Hoiium Date 4/09/10
 Larry D. Hoiium, Anoka County Surveyor
 Minnesota License Number 18165

VRS
 3DQ = 0.03 N = 159043.1403 E = 507859.3334

CERTIFICATE OF LOCATION OF GOVERNMENT CORNER

County of Anoka

State of Minnesota

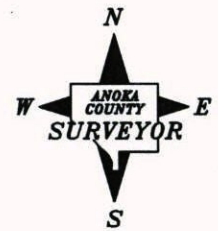
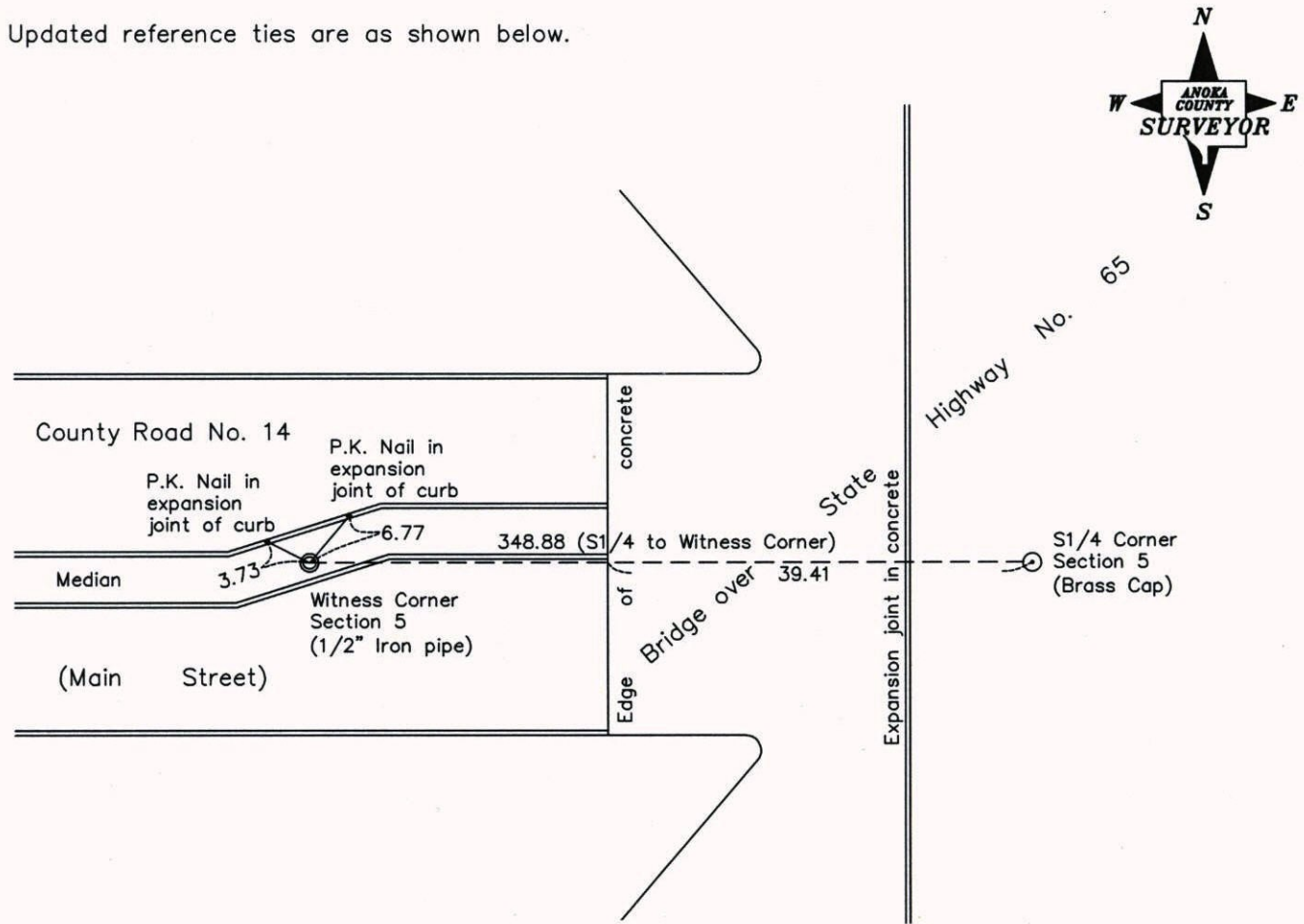
Witness Corner of Sec. 5 Township 31 Range 23
 (On south line of section)

On the 2nd day of June, 2009, the described corner was evidenced by a point set on line
between the South 1/4 corner and the Southwest corner of Section 5

and to perpetuate the location of said corner, at the exact location thereof, a permanent marker
 was placed consisting of a 1/2" iron pipe set flush in concrete median

AND on the ___ day of _____, _____, said permanent marker was _____

Updated reference ties are as shown below.



Revised date
6/02/09

N.A.D. 1983 Coordinates (1996 Adjustment)	
County Project Coordinates	
Northing	159043.1337
Easting	507859.3979
Date	6/02/09

I hereby certify that this United States public land survey monument record is correct and complete to the best of my knowledge and belief.

Larry D. Hoium Date 4/09/10

Larry D. Hoium, Anoka County Surveyor

Minnesota License Number 18165