

CERTIFICATE OF LOCATION OF GOVERNMENT CORNER

County of Anoka

State of Minnesota

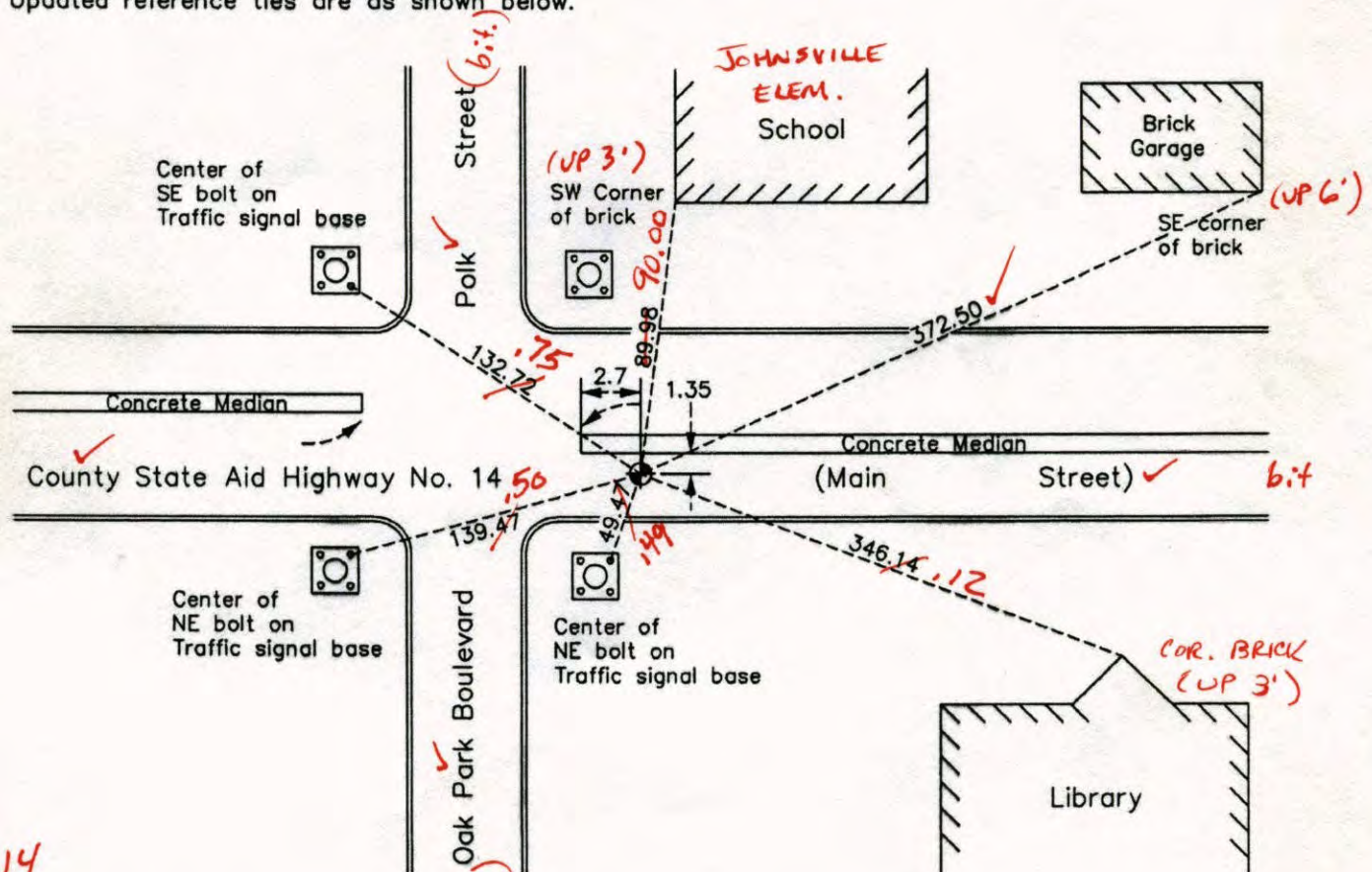
Southeast Corner of Sec. 6 Township 31 Range 23

On the 30th day of August, 1960, the described corner was evidenced by an iron pipe used by Cartwright

and to perpetuate the location of said corner, at the exact location thereof, a permanent marker was placed consisting of a cast iron monument

AND on the 11th day of September, 2012, said permanent marker was replaced with a cast iron monument after road construction and the ties were updated

Updated reference ties are as shown below.



6-5-14
BK-SS
WILD
T2800

ANOKA COUNTY SURVEYOR

Revision Date
12/09/13

N.A.D. 1983 Coordinates
(1996 Adjustment)

County Project Coordinates	
Northing	159021.0649
Easting	505546.5037
Date	9/03/98

I hereby certify that this United States public land, survey monument record is correct and complete to the best of my knowledge and belief.

Larry D. Holum Date 12/09/13

Larry D. Holum, Anoka County Surveyor
Minnesota License Number 18165

CERTIFICATE OF LOCATION OF GOVERNMENT CORNER

County of Anoka

State of Minnesota

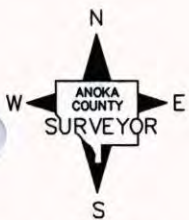
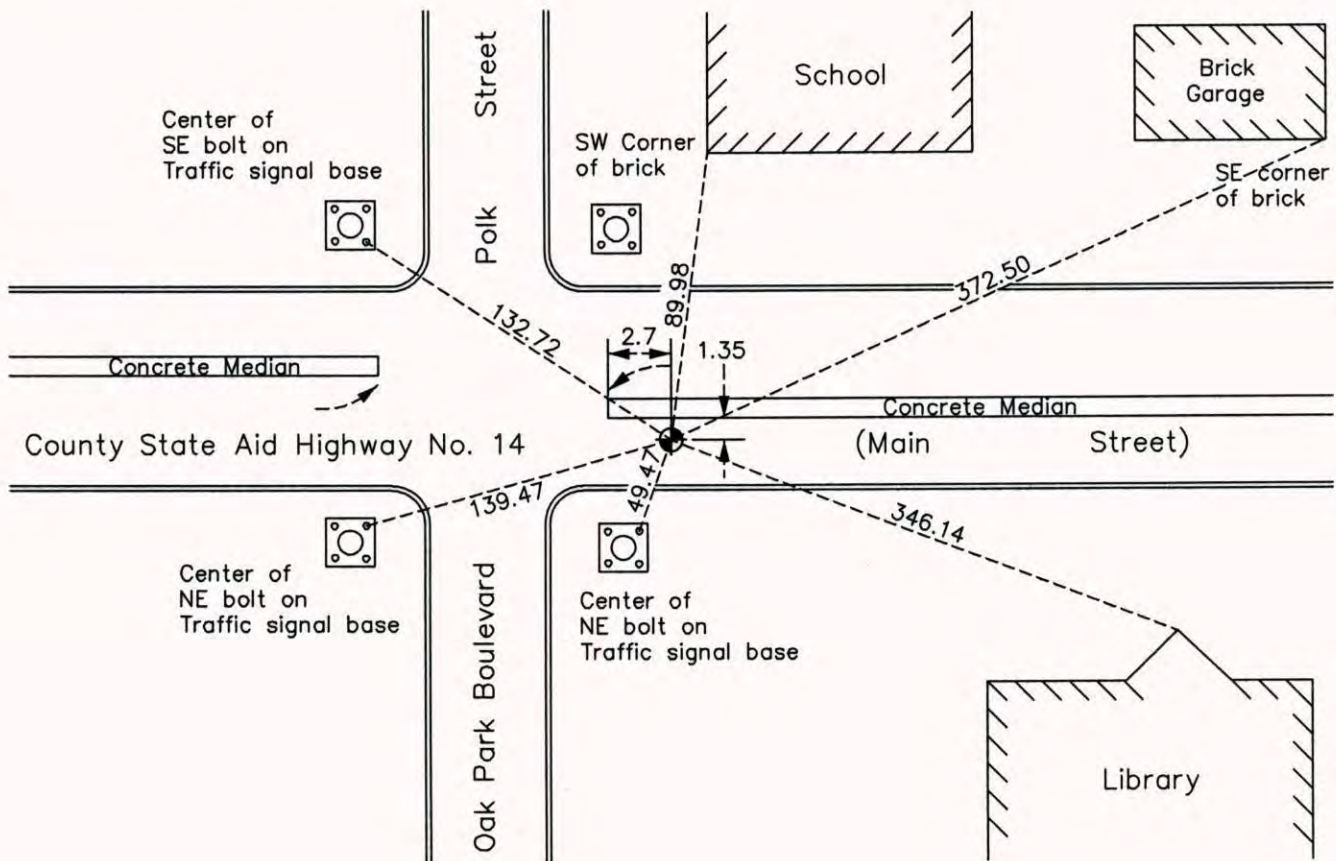
Southeast Corner of Sec. 6 Township 31 Range 23

On the 30th day of August, 1960, the described corner was evidenced by an iron pipe
used by Cartwright

and to perpetuate the location of said corner, at the exact location thereof, a permanent marker
 was placed consisting of a cast iron monument

AND on the 11th day of September, 2012, said permanent marker was replaced with a cast
iron monument after road construction and the ties were updated

Updated reference ties are as shown below.



Revision Date
12/09/13

N.A.D. 1983 Coordinates
 (1996 Adjustment)

County Project Coordinates	
Northing	159021.0649
Easting	505546.5037
Date	9/03/98

I hereby certify that this United States public land survey monument record is correct and complete to the best of my knowledge and belief.

Larry D. Hoium Date 12/09/13

Larry D. Hoium, Anoka County Surveyor
 Minnesota License Number 18165

CERTIFICATE OF LOCATION OF GOVERNMENT CORNER

County of Anoka State of Minnesota

Southeast Corner of Sec. 6 Township 31 Range 23

On the 30th day of August, 1960, the described corner was evidenced by an iron pipe used
by Cartwright

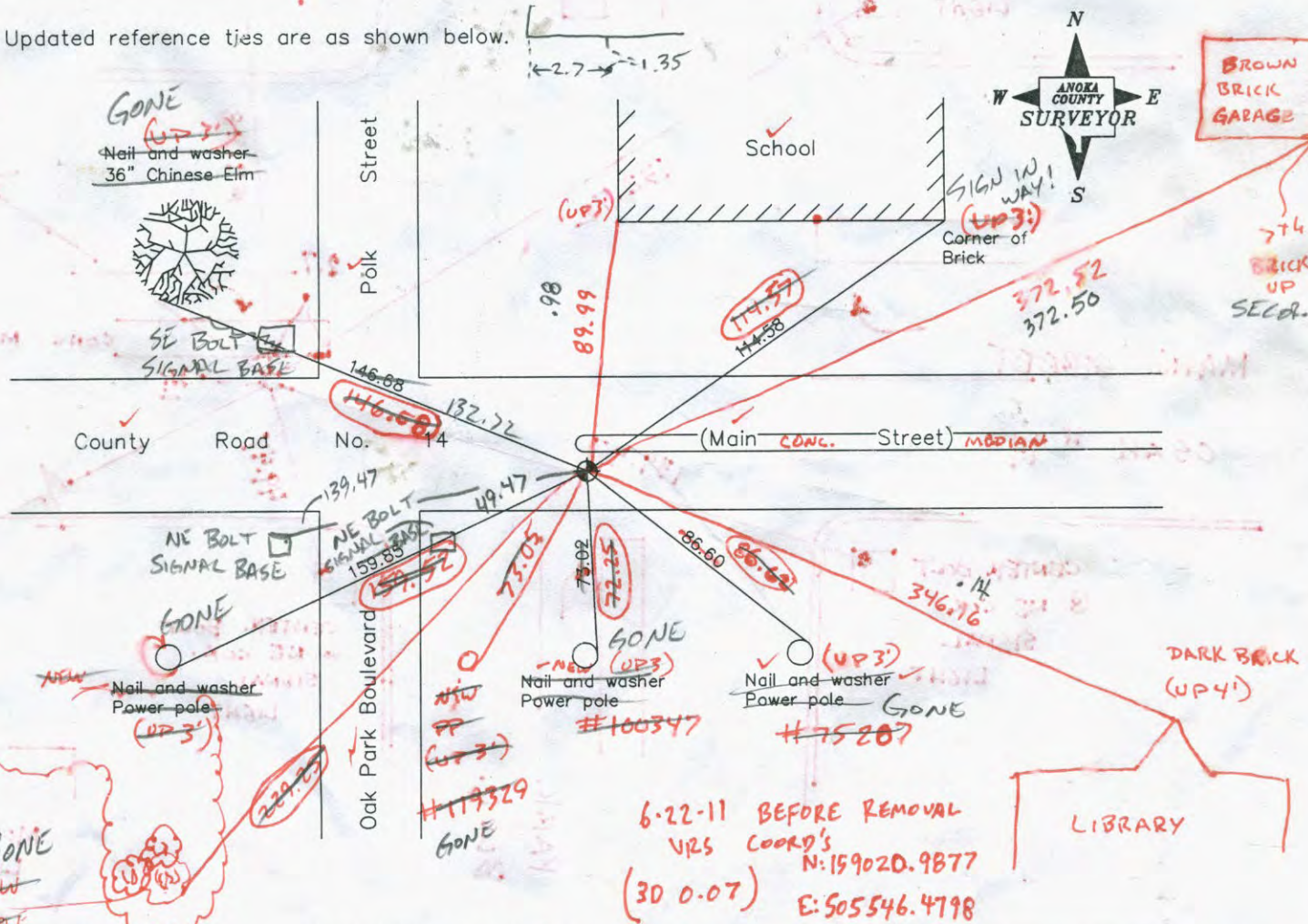
and to perpetuate the location of said corner, at the exact location thereof, a permanent marker
was placed consisting of a cast iron monument

SEE BACK FOR NEW TIES

AND on the ___ day of _____, _____, said permanent marker was _____

Updated reference ties are as shown below.

6-22-11
JS SH
T/T



Revised date
8/03/90
8/17/95
9/03/98

N.A.D. 1983 Coordinates (1996 Adjustment)	
County Project Coordinates	
Northing	<u>159021.0649</u>
Easting	<u>505546.5037</u>
Date	<u>9/03/98</u>

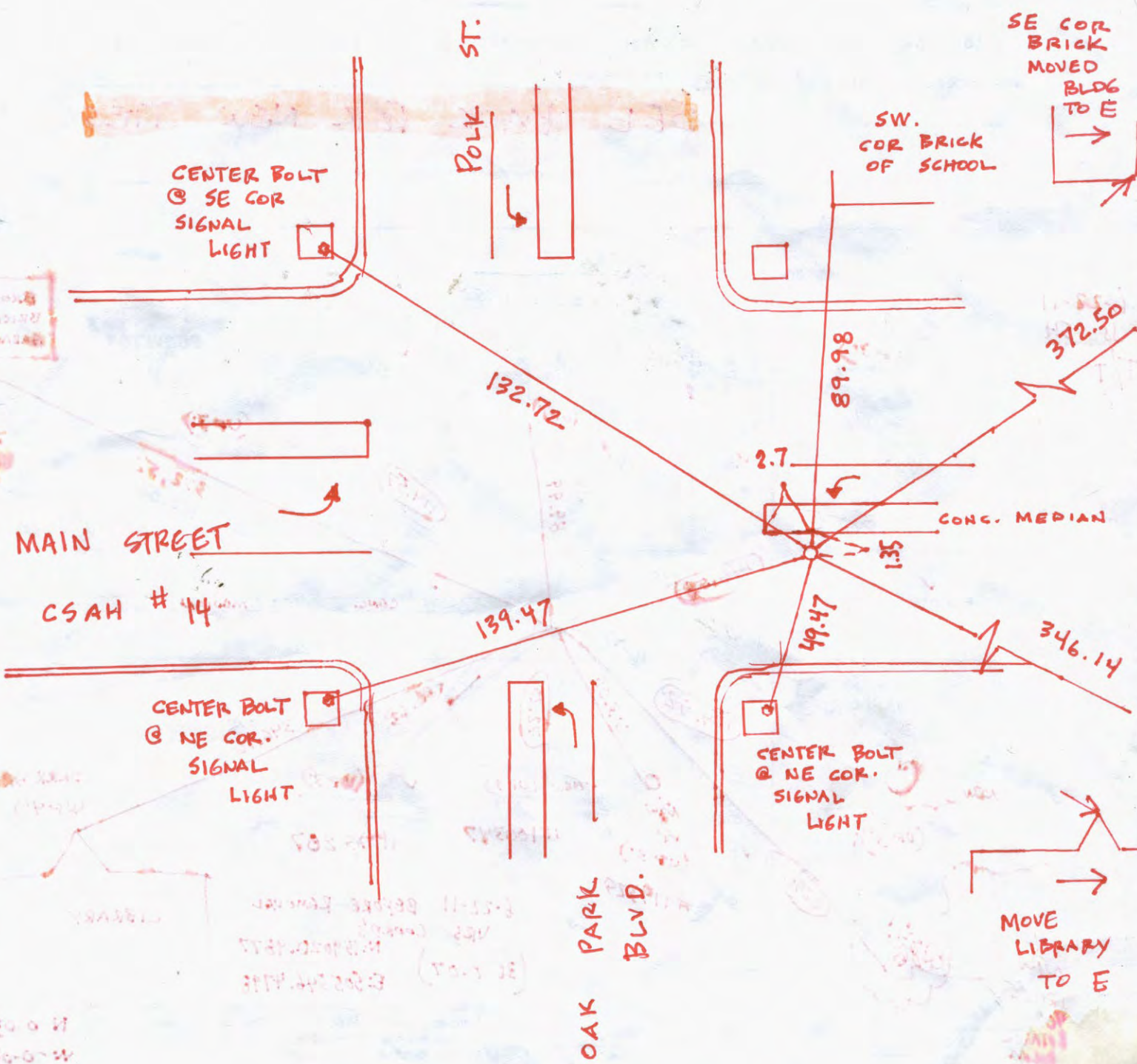
I hereby certify that this United States public land survey monument record is correct and complete to the best of my knowledge and belief.

_____, Date _____
_____, Anoka County Surveyor
Minnesota License Number _____

N 0.03
W 0.05

6-22-11 BEFORE REMOVAL
URS COOK'S
N: 159020.9877
(30 0.07) E: 505546.4798

9-11-12 JS. SH.
SET C.I.M. +
RETIED



CERTIFICATE OF LOCATION OF GOVERNMENT CORNER

County of Anoka

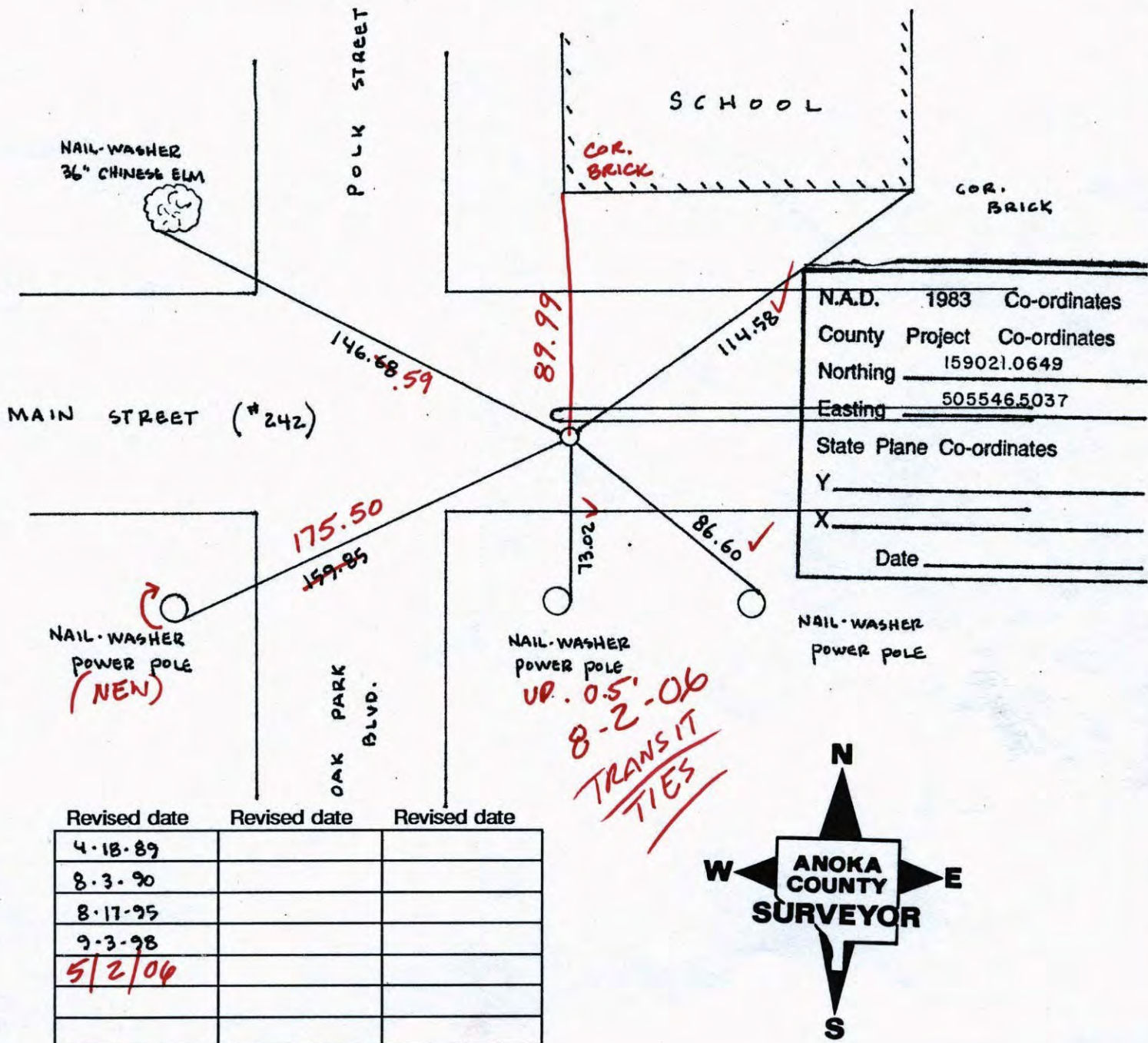
State of Minnesota

SOUTHEAST Corner of Sec. 6 Township 31 Range 23

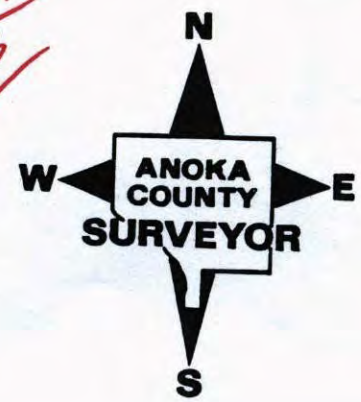
I hereby certify that on the 30TH day of AUGUST, 19 60, I found the described corner which was evidenced by IRON USED BY CARTWRIGHT

and I further certify that to perpetuate the location of said corner, I did, at the exact location thereof, place a permanent marker consisting of CAST IRON MONUMENT

which reference or witness monuments are located in the manner following:



Revised date	Revised date	Revised date
4-18-89		
8-3-90		
8-17-95		
9-3-98		
5/2/04		



CERTIFICATE OF LOCATION OF GOVERNMENT CORNER

County of Anoka

State of Minnesota

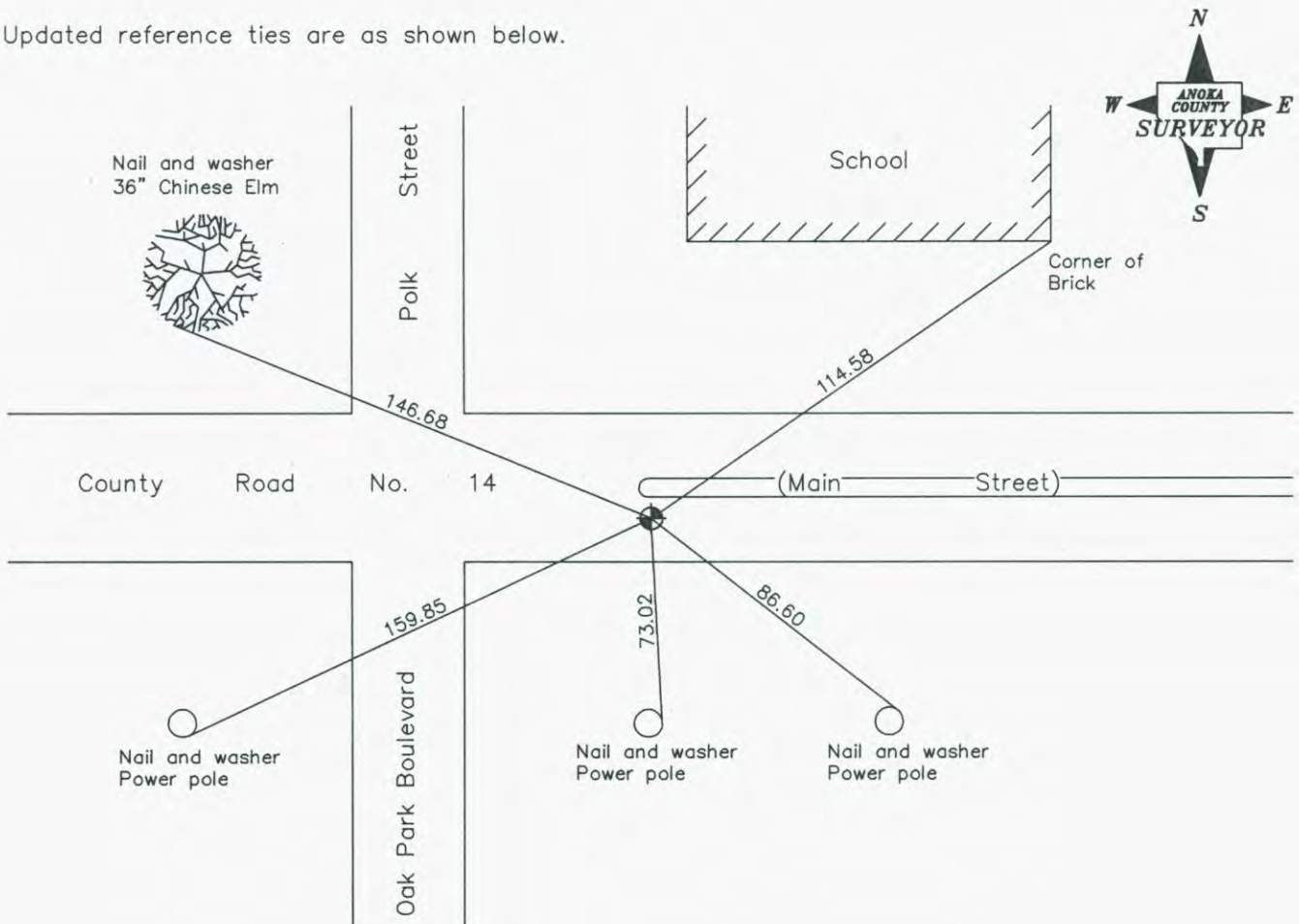
Southeast Corner of Sec. 6 Township 31 Range 23

On the 30th day of August, 1960, the described corner was evidenced by an iron pipe used
by Cartwright

and to perpetuate the location of said corner, at the exact location thereof, a permanent marker
was placed consisting of a cast iron monument

AND on the ___ day of _____, _____, said permanent marker was _____

Updated reference ties are as shown below.



Revised date
8/03/90
8/17/95
9/03/98

N.A.D. 1983 Coordinates (1996 Adjustment)	
County Project Coordinates	
Northing	<u>159021.0649</u>
Easting	<u>505546.5037</u>
Date	<u>9/03/98</u>

I hereby certify that this United States public land survey monument record is correct and complete to the best of my knowledge and belief.

_____, Anoka County Surveyor

Minnesota License Number _____

CERTIFICATE OF LOCATION OF GOVERNMENT CORNER

County of Anoka

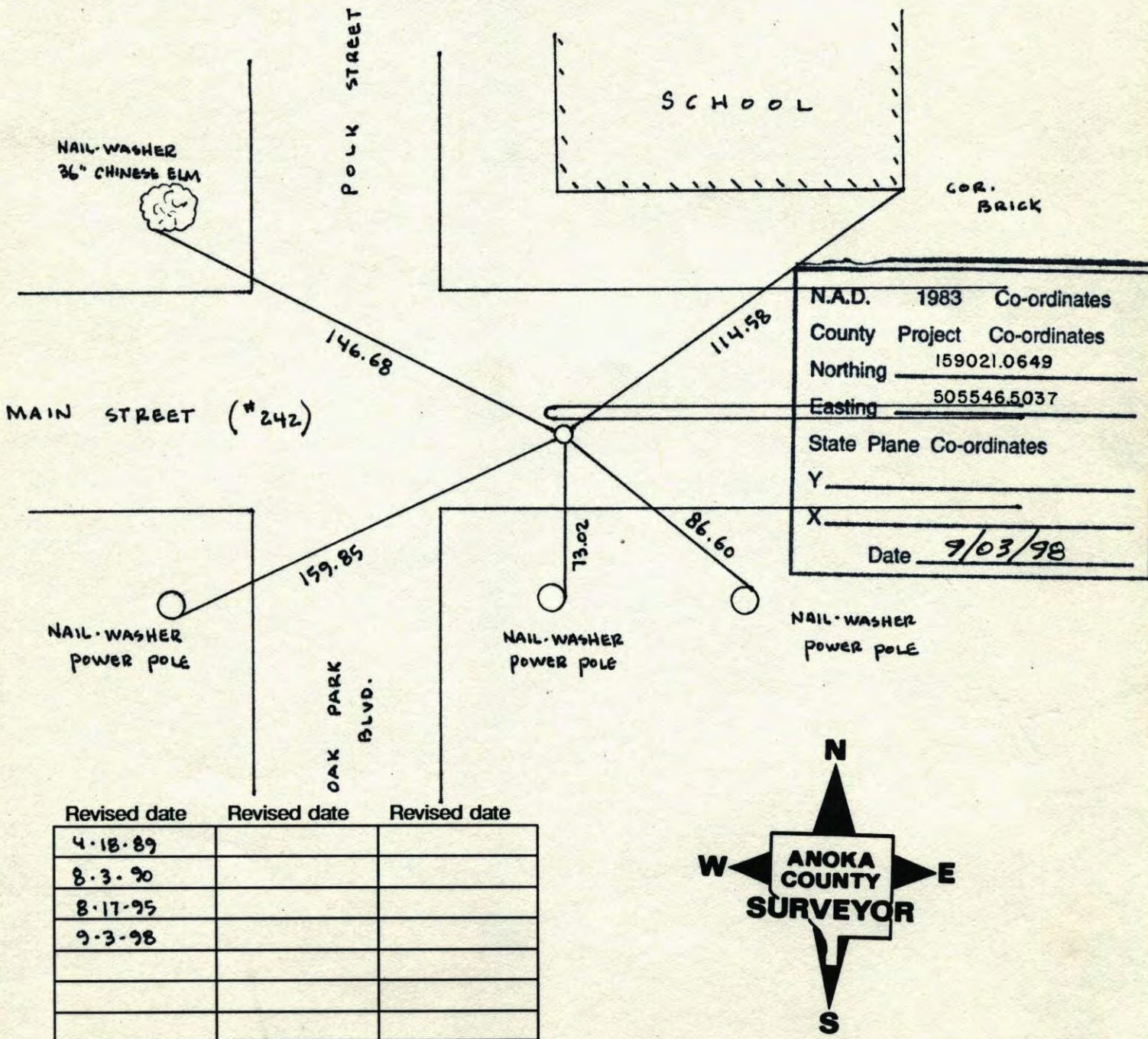
State of Minnesota

SOUTHEAST Corner of Sec. 6 Township 31 Range 23

I hereby certify that on the 30TH day of AUGUST, 19 60, I found the described corner which was evidenced by IRON USED BY CARTWRIGHT

and I further certify that to perpetuate the location of said corner, I did, at the exact location thereof, place a permanent marker consisting of CAST IRON MONUMENT

which reference or witness monuments are located in the manner following:



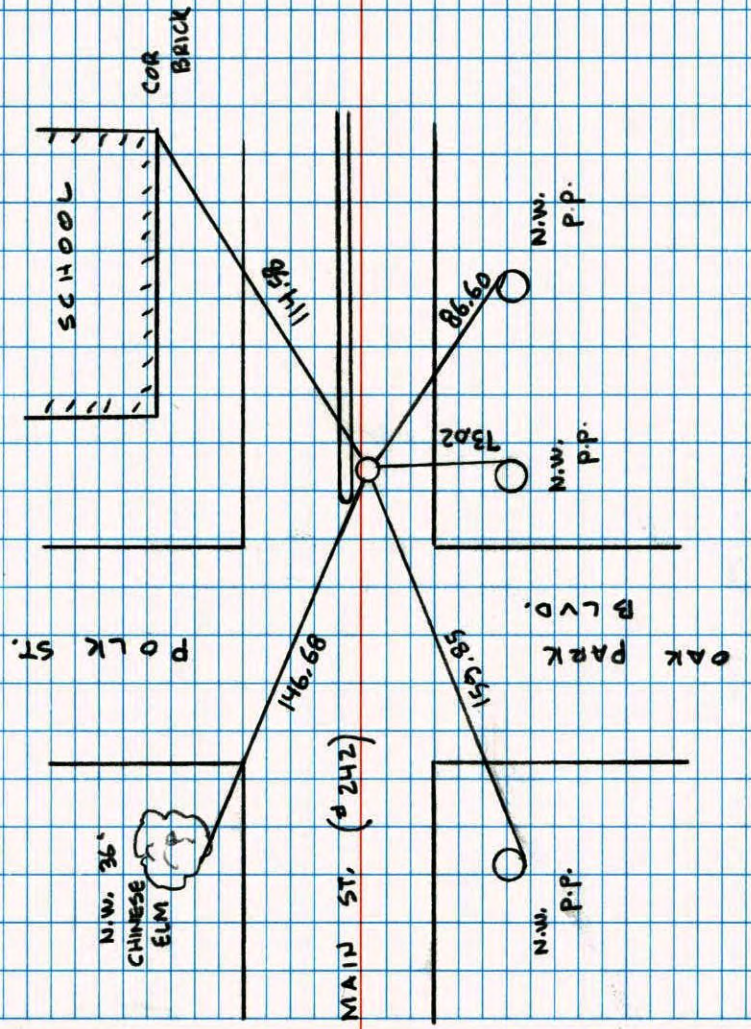
SOUTHEAST COR. SEC. 6 T31 R23

RESET CAST IRON MONUMENT

9-3-98
J. SIMMER
P. KLEMZ

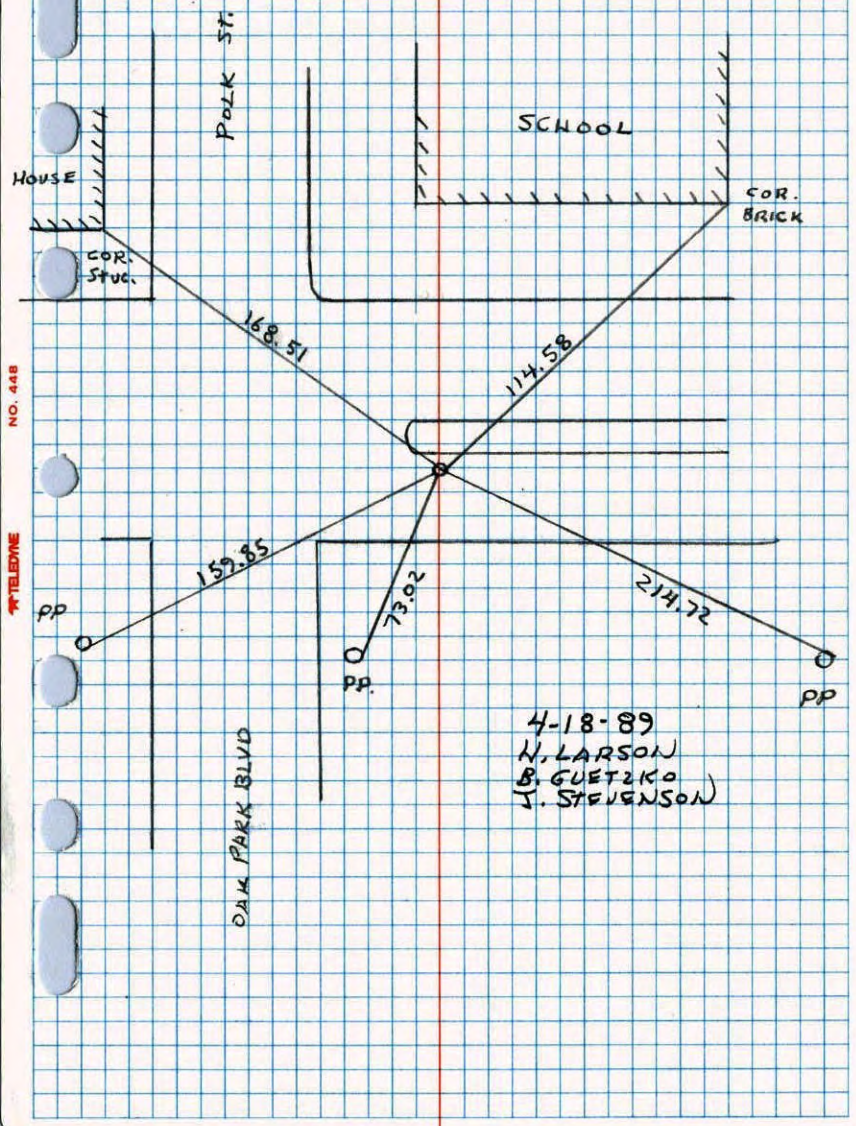


NATIONAL PRINTING
NO. 446



SE. COR. SEC. 6 T31 R23

RESET CAST IRON AFTER CONSTRUCTION PKs 2.00'
SOUTH AND WEST

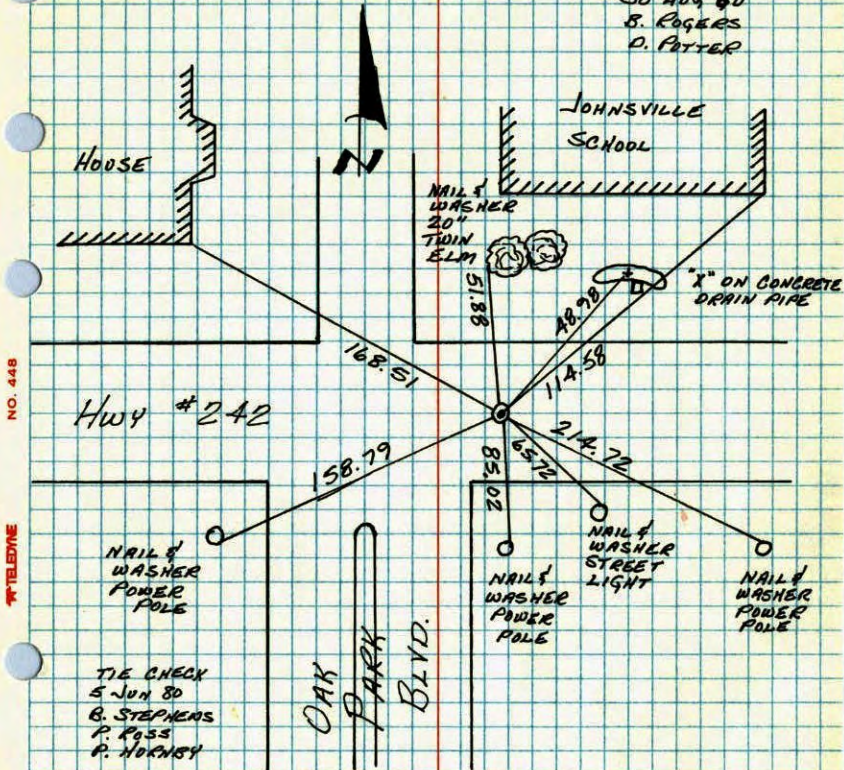


NATIONAL PRINTING
NO. 446

4-18-89
N. LARSON
B. GUETZKO
J. STEVENSON

S.E. CORNER SECTION 6-T31-R23

FOUND IRON PIPE FLUSH WITH ROAD, USED BY CARTWRITE. SET
 CAST IRON MONUMENT FLUSH. SET PK'S 2.00' NORTH AND EAST.
 30 AUG 60
 S. ROGERS
 D. POTTER



NO. 448

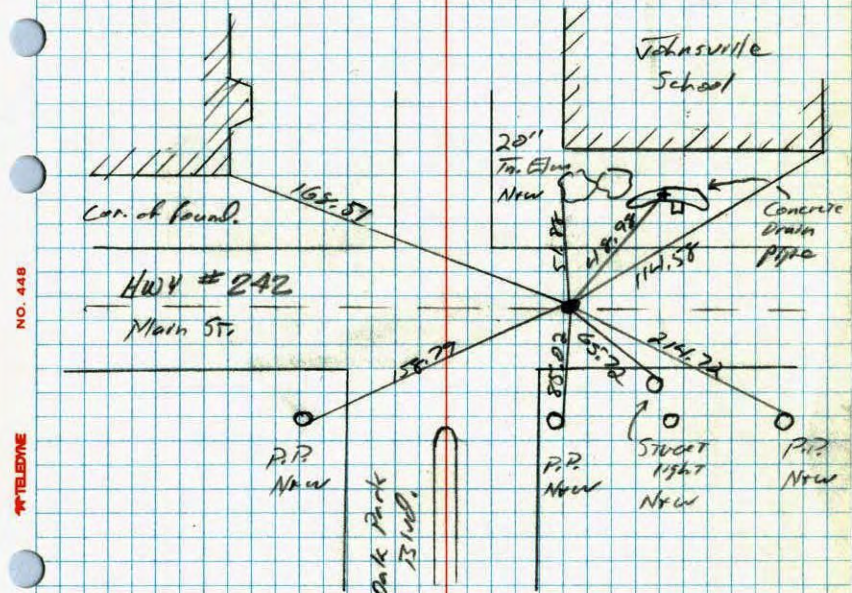
TELEPHONE

TEMPERATURE CORRECTED
 AND HORIZONTALLY
 TAPED MEASUREMENTS

ROLAND W. ANDERSON
 COUNTY SURVEYOR
 ANOKA COUNTY, MINNESOTA

S.E. Cor. Sec. 6 T-31 R-23

Cast iron monument flush.
 Pk. nails 2' north & east.



NO. 448

TELEPHONE

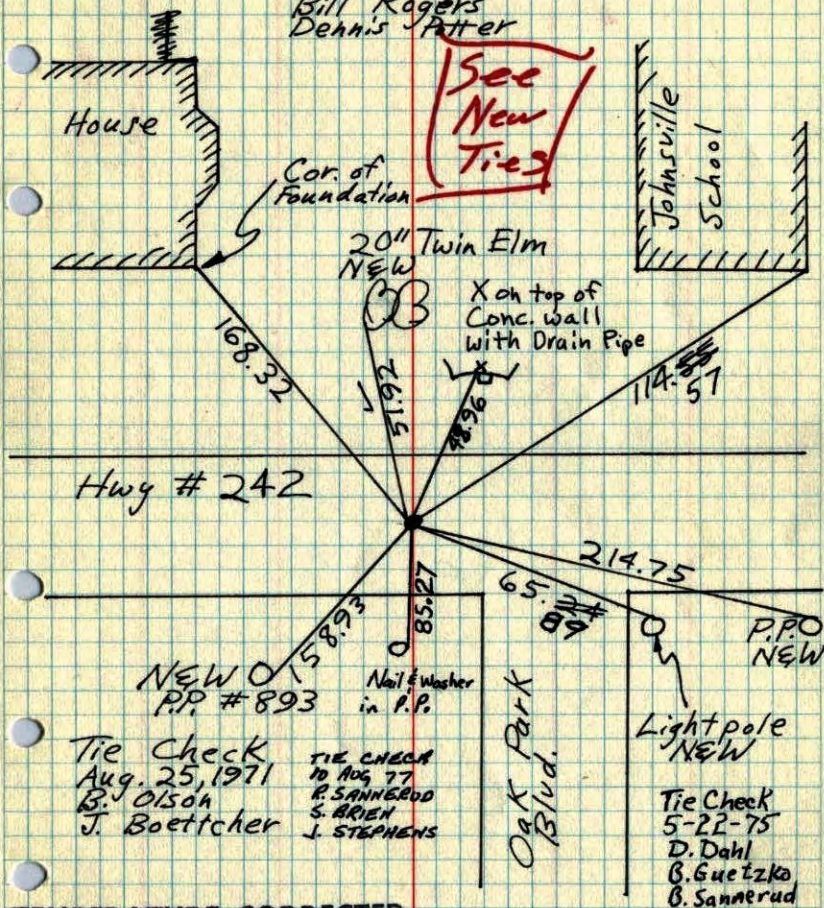
6-5-80 MS
 B. Stephens
 P. Ross
 D. Hornby

S.E. Cor. Sec. 6-T31, R23

Found I.P. flush with road, used by Cartwright

Set Cast Iron Monument flush.
Set P.P. # 2 North & East.

8/30/60
Bill Rogers
Dennis Pitter



Tie Check
Aug. 25, 1971
B. Olson
J. Boettcher

TIE CHECK
10 AUG 77
R. SANNEBOD
S. ARLEN
J. STEPHENS

Light pole
NEW

Tie Check
5-22-75
D. Dahl
B. Guetzko
B. Sannerud

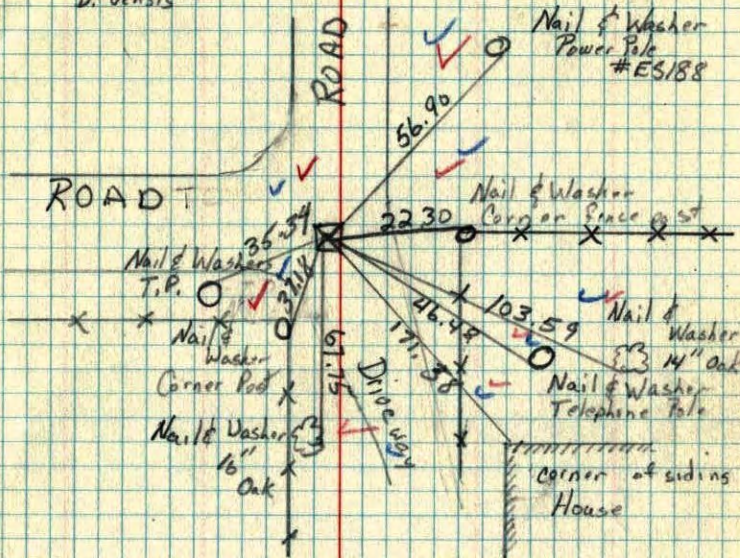
TEMPERATURE CORRECTED
AND HORIZONTALLY
TAPED MEASUREMENTS

ROLAND W. ANDERSON
COUNTY SURVEYOR
ANOKA COUNTY, MINNESOTA

SW Cor. Sec. 6-T31-R23

Granite Monument
down 0.5'

✓ #10 70°
May 17, 1971
R. Beien
J. Boettcher
D. Vennis



TEMPERATURE CORRECTED
AND HORIZONTALLY
TAPED MEASUREMENTS

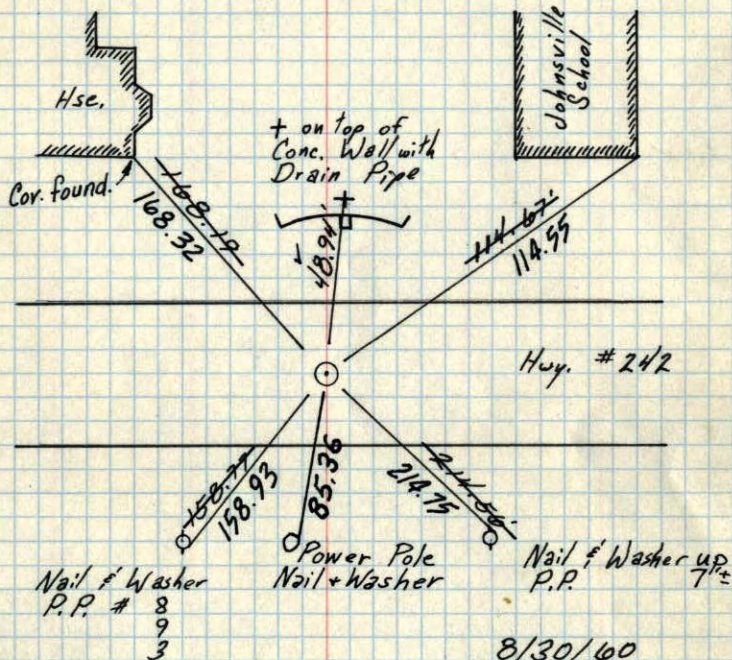
ROLAND W. ANDERSON
COUNTY SURVEYOR
ANOKA COUNTY, MINNESOTA

22

SE Cor. Sec 6-T31-R23

Found I. P. Flush with Road, used by Cartwright on Ostman's Fair Oaks, Set Cast Iron Mon.

Flush
Set P.K. spks. 2' North and East



TEMPERATURE CORRECTED
AND HORIZONTALLY
TAPED MEASUREMENTS

Retie 6/29/64

J. Oliver
R. Carlson
N. Livgard
J. Dunlop

8/30/60

Bill Rogers
Dennis Potter
Dick Giddings
Randy Carlson
Ralph Robinson

Tie Check
July 16, 1968
D. Powell
P. Pieh

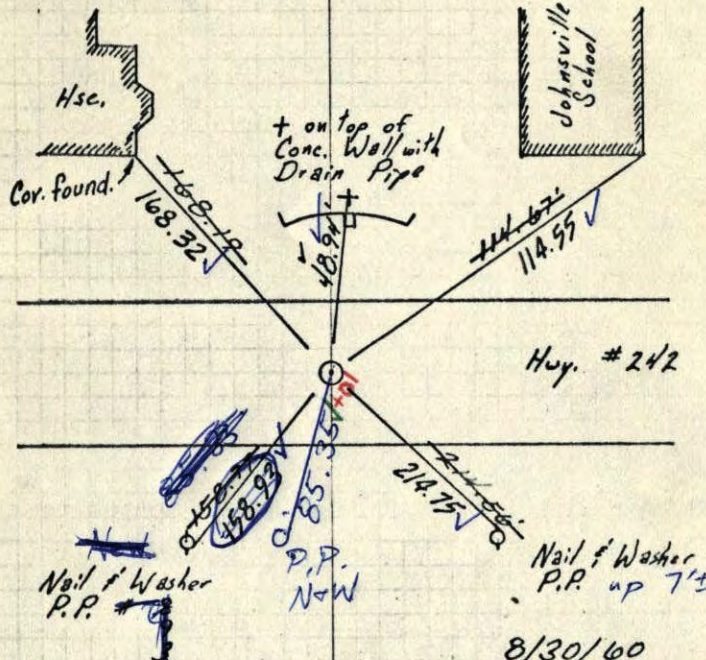
ROLAND W. ANDERSON
COUNTY SURVEYOR
ANOKA COUNTY, MINNESOTA

22

SE Cor. Sec 6-T31-R23

Found I. P. Flush with Road, used by Cartwright on Ostman's Fair Oaks, Set Cast Iron Mon.

Flush
Set P.K. spks. 2' North and East



TEMPERATURE CORRECTED
AND HORIZONTALLY
TAPED MEASUREMENTS

Retie 6/29/64

J. Oliver
R. Carlson
N. Livgard
J. Dunlop

8/30/60

Bill Rogers
Dennis Potter
Dick Giddings
Randy Carlson
Ralph Robinson

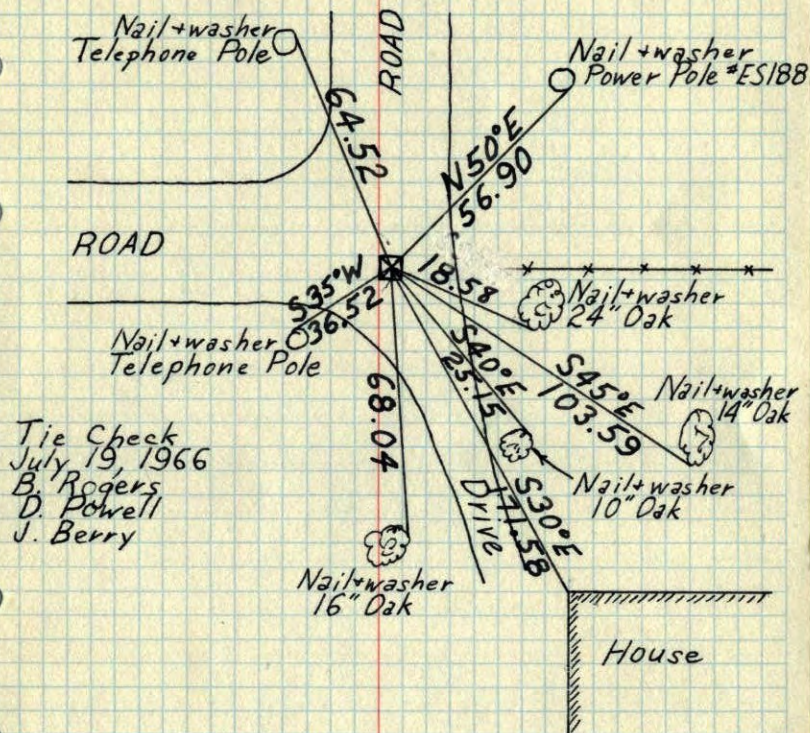
7/16/68
#7-86
D. Powell
P. Pieh

ROLAND W. ANDERSON
COUNTY SURVEYOR
ANOKA COUNTY, MINNESOTA

SE
SW Cor. Sec. 5-T32-R23

31

Granite Monument down 0.6'



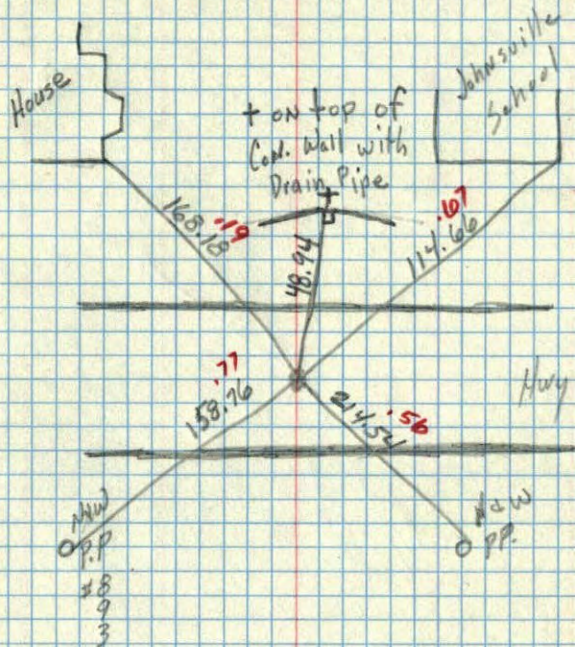
Tie Check
July 19, 1966
B. Rogers
D. Powell
J. Berry

TEMPERATURE CORRECTED
AND HORIZONTALLY
TAPED MEASUREMENTS

ROLAND W. ANDERSON
COUNTY SURVEYOR
ANOKA COUNTY, MINNESOTA

SE Cor. Sec. 6 T31 R23

Found Iron Pipe Flush Replaced with
Cast Iron Man. Flush

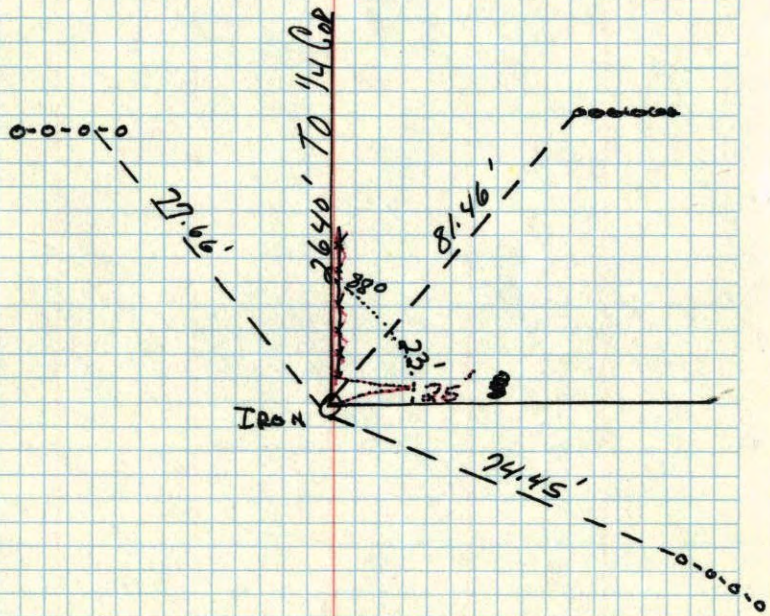


7/8/60

TC
J. Rogers
8/30/60
B. Rogers
D. Powell
D. Giddings
Randy Carlson
Ralph Robinson

SE
SW cor. of Sec. 6 T-31 R-23

8 ✓

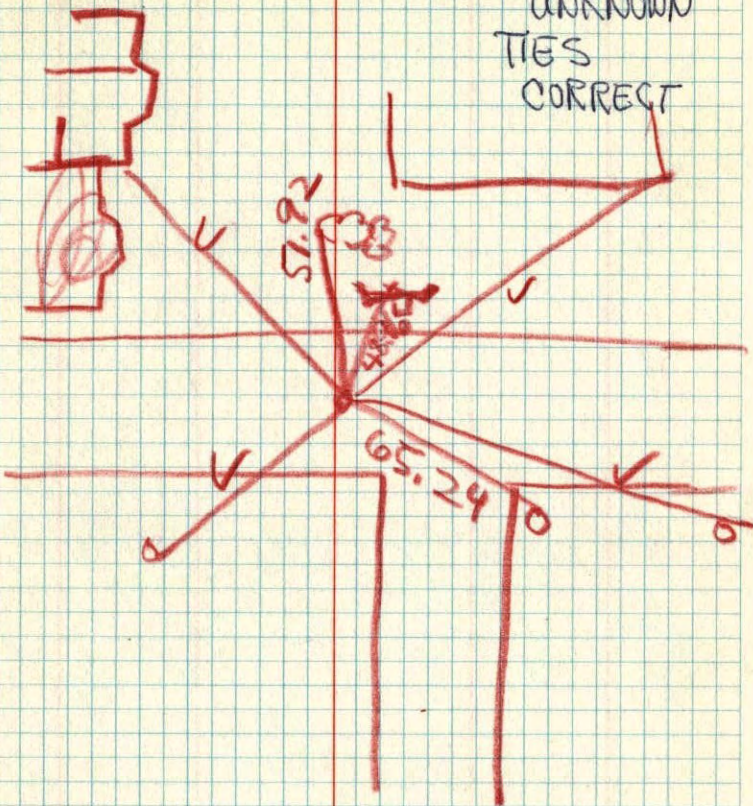


by (Harvey Coetwight)
Wm. L. Uigbts June 1957

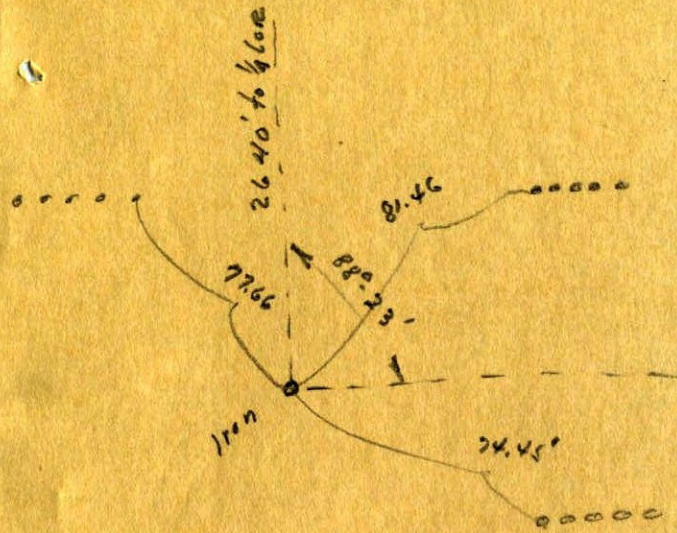
S.E. Cor. Sec. 6 T-31-R-23

22

DATE
UNKNOWN
TIES
CORRECT



Sec. 8, T31, R23
6
SE ~~SW~~ Cor.



(5)