

CERTIFICATE OF LOCATION OF GOVERNMENT CORNER

County of Anoka

State of Minnesota

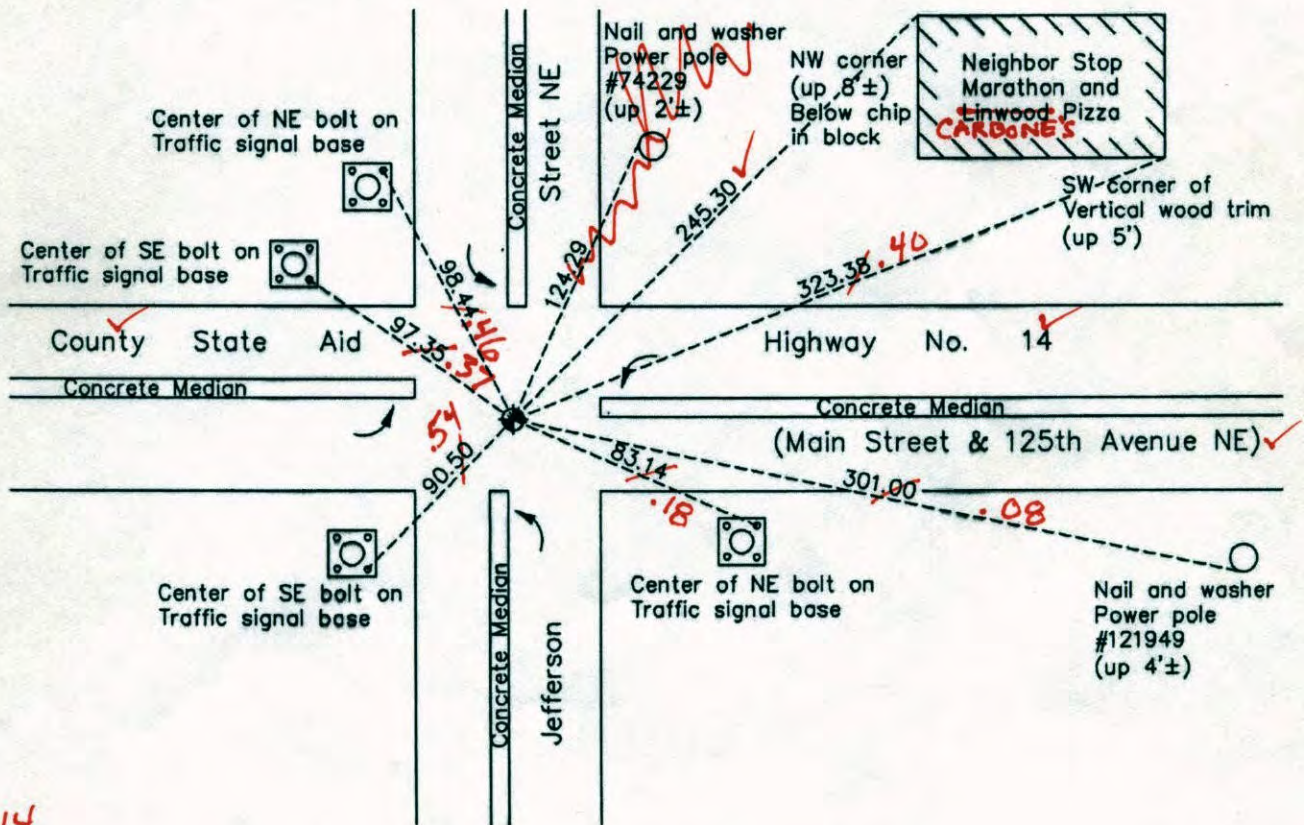
South $\frac{1}{4}$ Corner of Sec. 6 Township 31 Range 23

On the 30th day of August, 1960, the described corner was evidenced by an iron pipe

and to perpetuate the location of said corner, at the exact location thereof, a permanent marker was placed consisting of a cast iron monument

AND on the 11th day of September, 2012, said permanent marker was replaced with a cast iron monument after road construction and the ties were updated

Updated reference ties are as shown below.



6-5-14
BK-SS
WLD
T2000

ANOKA COUNTY SURVEYOR

S

Revision Date 12/11/13

N.A.D. 1983 Coordinates
(1996 Adjustment)

County Project Coordinates	
Northing	158997.9871
Easting	502882.4024
Date	9/03/98

I hereby certify that this United States public land survey monument record is correct and complete to the best of my knowledge and belief.

Larry D. Holum Date 12/11/13

Larry D. Holum, Anoka County Surveyor
Minnesota License Number 18165

CERTIFICATE OF LOCATION OF GOVERNMENT CORNER

County of Anoka

State of Minnesota

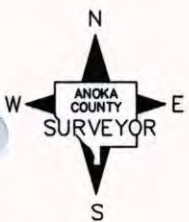
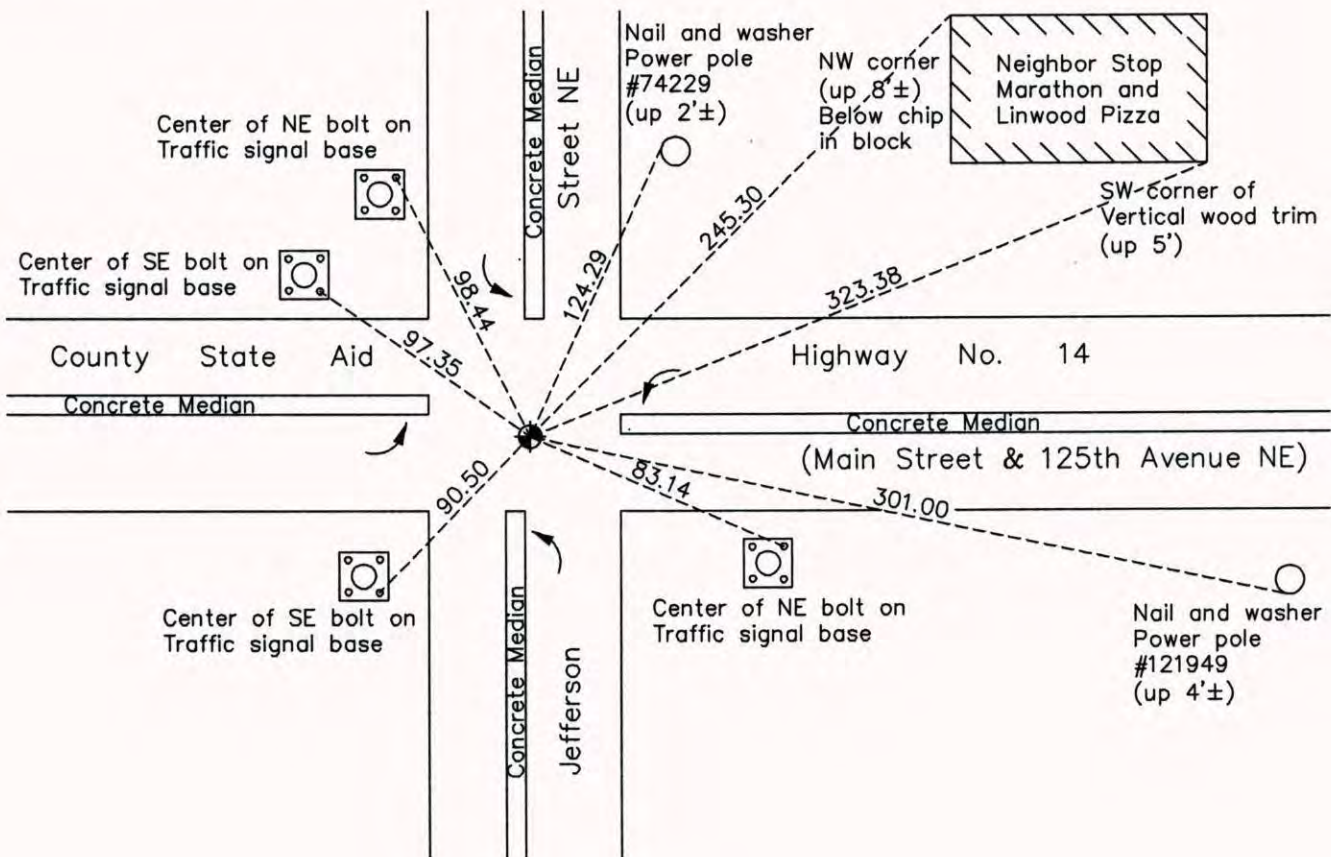
South 1/4 Corner of Sec. 6 Township 31 Range 23

On the 30th day of August, 1960, the described corner was evidenced by an iron pipe

and to perpetuate the location of said corner, at the exact location thereof, a permanent marker was placed consisting of a cast iron monument

AND on the 11th day of September, 2012, said permanent marker was replaced with a cast iron monument after road construction and the ties were updated

Updated reference ties are as shown below.



Revision Date
12/11/13

N.A.D. 1983 Coordinates
(1996 Adjustment)

County Project Coordinates	
Northing	158997.9871
Easting	502882.4024
Date	9/03/98

I hereby certify that this United States public land survey monument record is correct and complete to the best of my knowledge and belief.

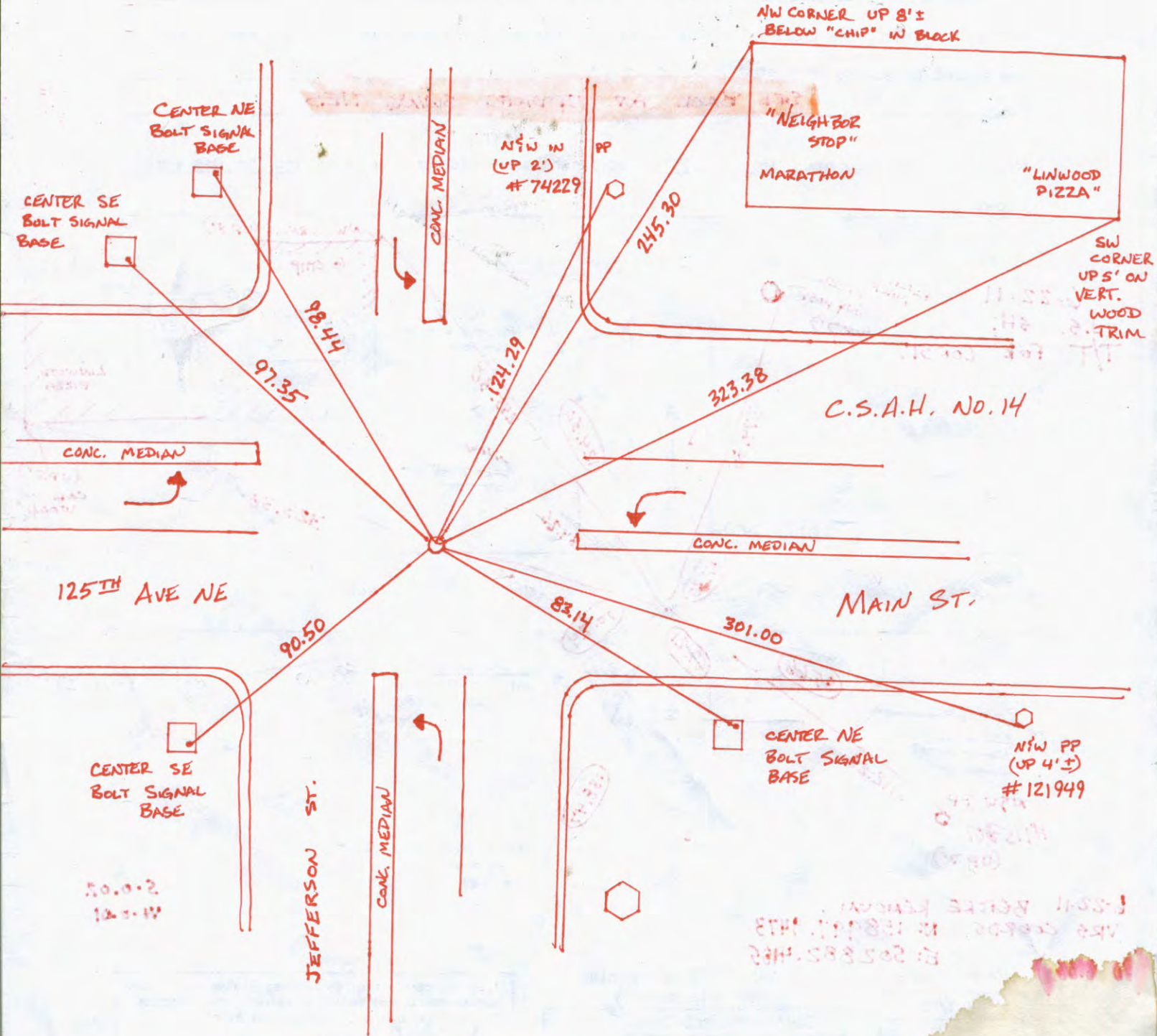
Larry D. Hoium Date 12/11/13

Larry D. Hoium, Anoka County Surveyor
Minnesota License Number 18165

9/11/12

J'S SH

RESET C.I.M. AND SWING TIES



CERTIFICATE OF LOCATION OF GOVERNMENT CORNER

County of Anoka State of Minnesota

South 1/4 Corner of Sec. 6 Township 31 Range 23

On the 30th day of August, 1960, the described corner was evidenced by an iron pipe

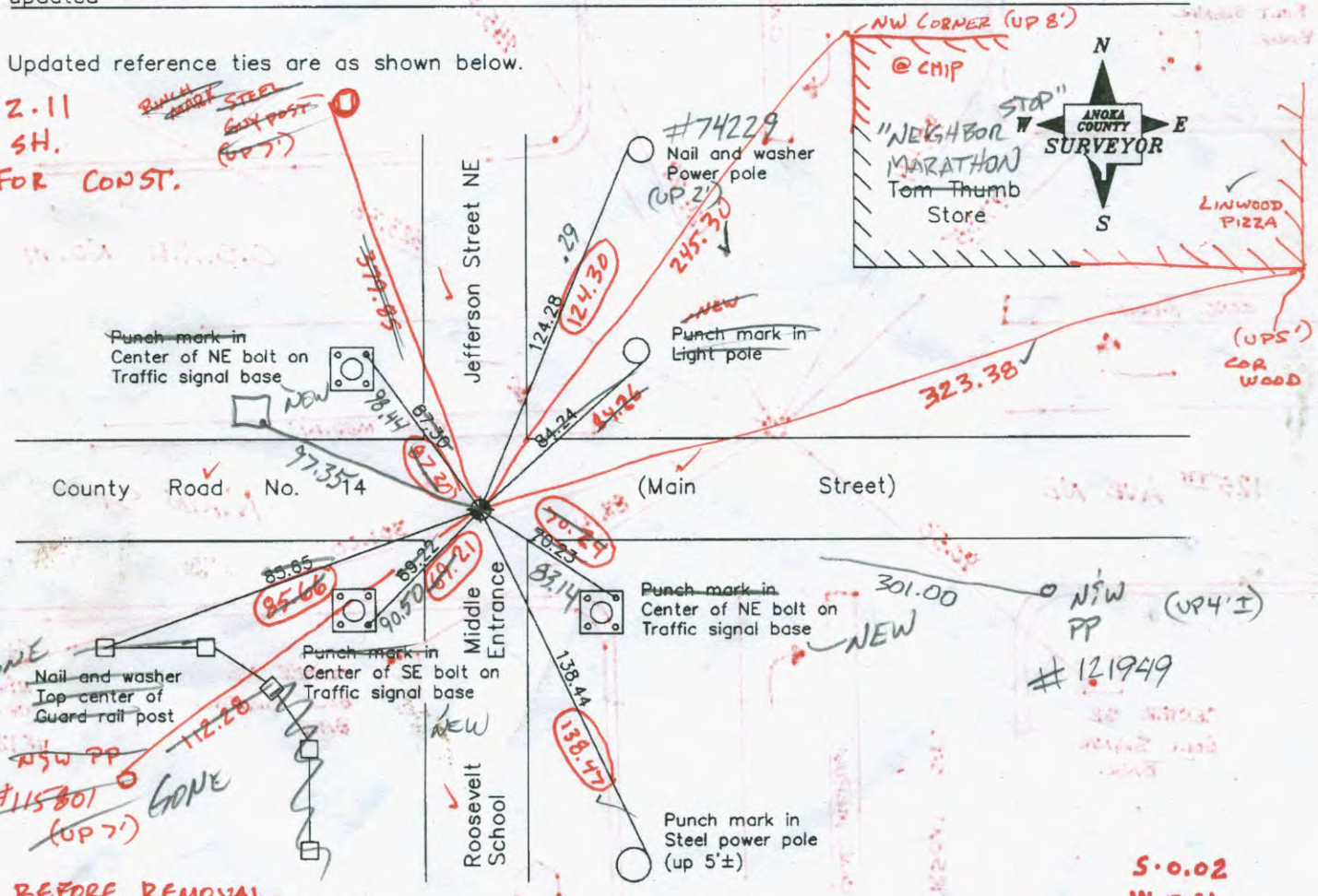
and to perpetuate the location of said corner, at the exact location thereof, a permanent marker was placed consisting of a cast iron monument

SEE BACK FOR UPDATED SWING TIES

AND on the 2nd day of May, 2006, said permanent marker was found and the ties were updated

Updated reference ties are as shown below.

6-22-11
J.S. SH.
T/T FOR CONST.



6-22-11 BEFORE REMOVAL
VRS COORDS N: 158997.9473
E: 502882.4185

S.O.02
W.O.01

Revised date

9/03/98
8/24/04
5/02/06

N.A.D. 1983 Coordinates
(1996 Adjustment)

County Project Coordinates	
Northing	158997.9871
Easting	502882.4024
Date	9/03/98

I hereby certify that this United States public land survey monument record is correct and complete to the best of my knowledge and belief.

Larry D. Hoium Date 5/02/06

Larry D. Hoium, Anoka County Surveyor

Minnesota License Number 18165

CERTIFICATE OF LOCATION OF GOVERNMENT CORNER

County of Anoka

State of Minnesota

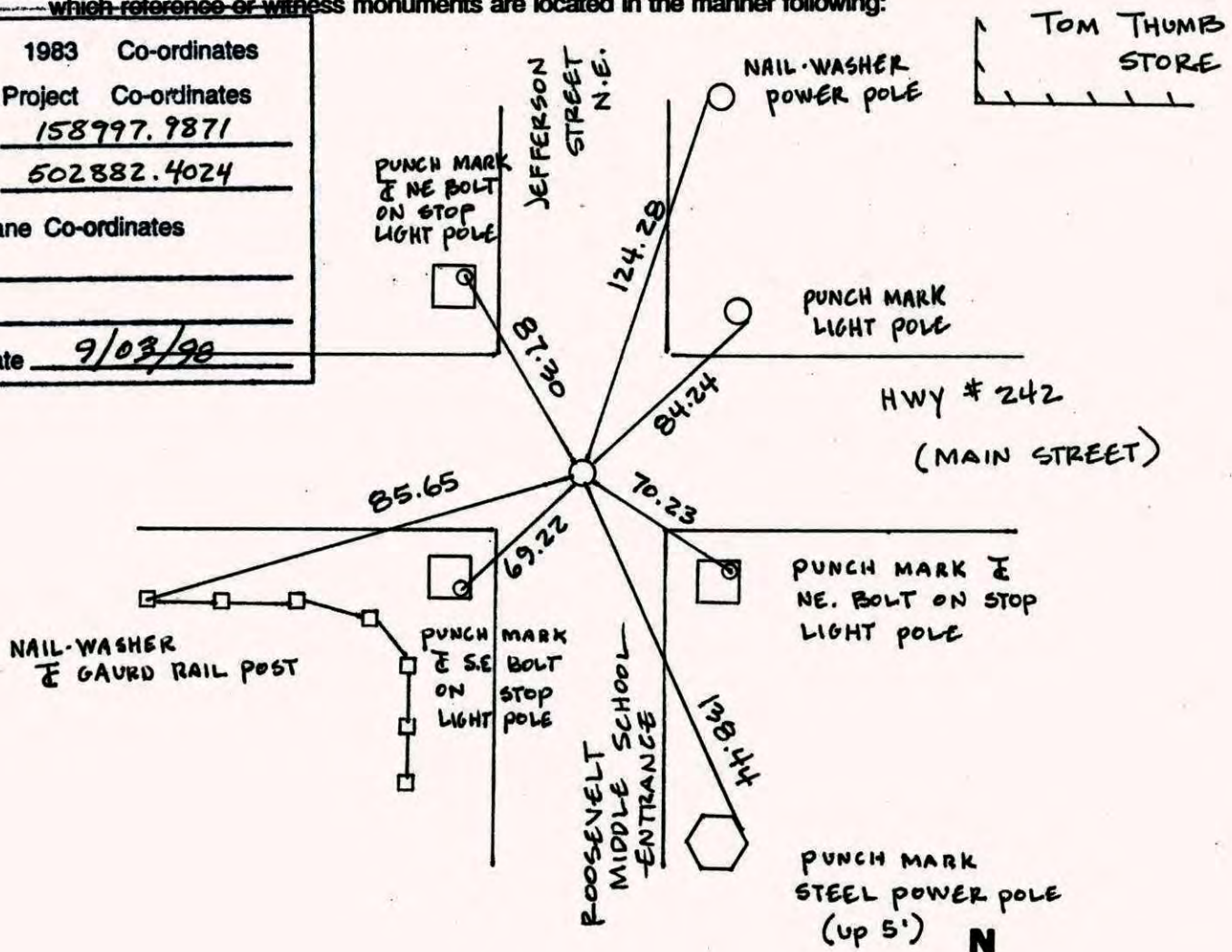
SOUTH 1/4 Corner of Sec. 6 Township 31 Range 23

I hereby certify that on the 30TH day of AUGUST, 1960, I found the described corner which was evidenced by FOUND I.P.

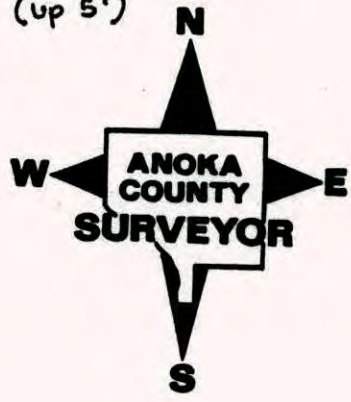
and I further certify that to perpetuate the location of said corner, I did, at the exact location thereof, place a permanent marker consisting of CAST IRON MONUMENT

which reference or witness monuments are located in the manner following:

N.A.D.	1983	Co-ordinates
County	Project	Co-ordinates
Northing		<u>158997.9871</u>
Easting		<u>502882.4024</u>
State Plane Co-ordinates		
Y _____		
X _____		
Date		<u>9/03/90</u>



Revised date	Revised date	Revised date
<u>5-30-86</u>		
<u>8-3-90</u>		
<u>9-3-98</u>		
<u>8-24-04</u>		
<u>5-2-06</u>		



CERTIFICATE OF LOCATION OF GOVERNMENT CORNER

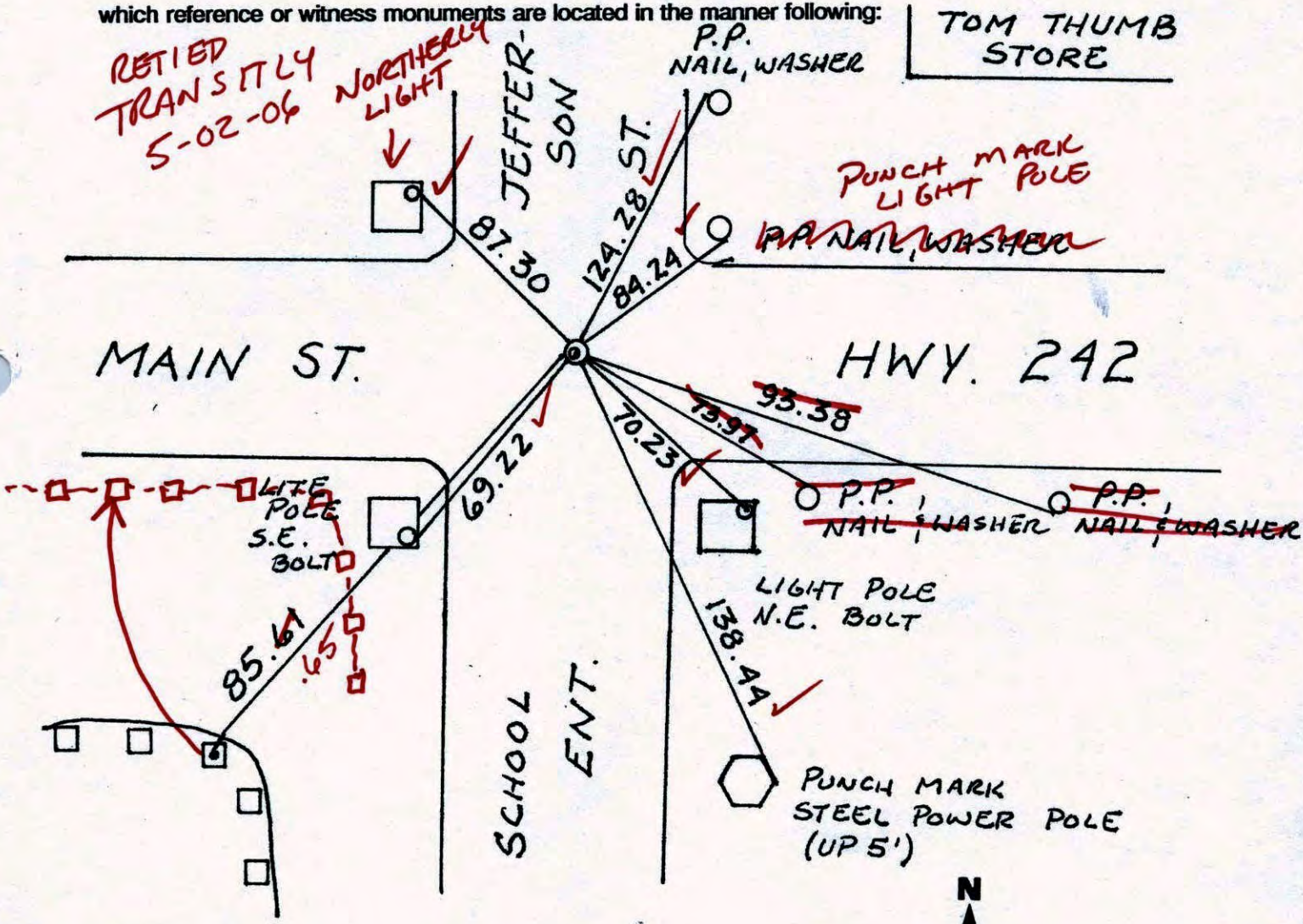
County of Anoka State of Minnesota

SOUTH $\frac{1}{4}$ Corner of Sec. 6 Township 31 Range 23

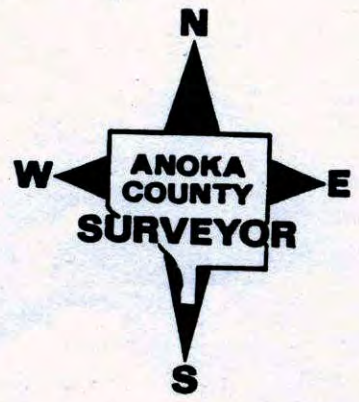
I hereby certify that on the 30 day of AUG., 1960, I found the described corner which was evidenced by FOUND I.P.

and I further certify that to perpetuate the location of said corner, I did, at the exact location thereof, place a permanent marker consisting of CAST IRON MON.

which reference or witness monuments are located in the manner following:



Revised date	Revised date	Revised date
5-30-86		
8-3-90		
9-3-98		
8-24-04		
5-2-06		



CERTIFICATE OF LOCATION OF GOVERNMENT CORNER

County of Anoka

State of Minnesota

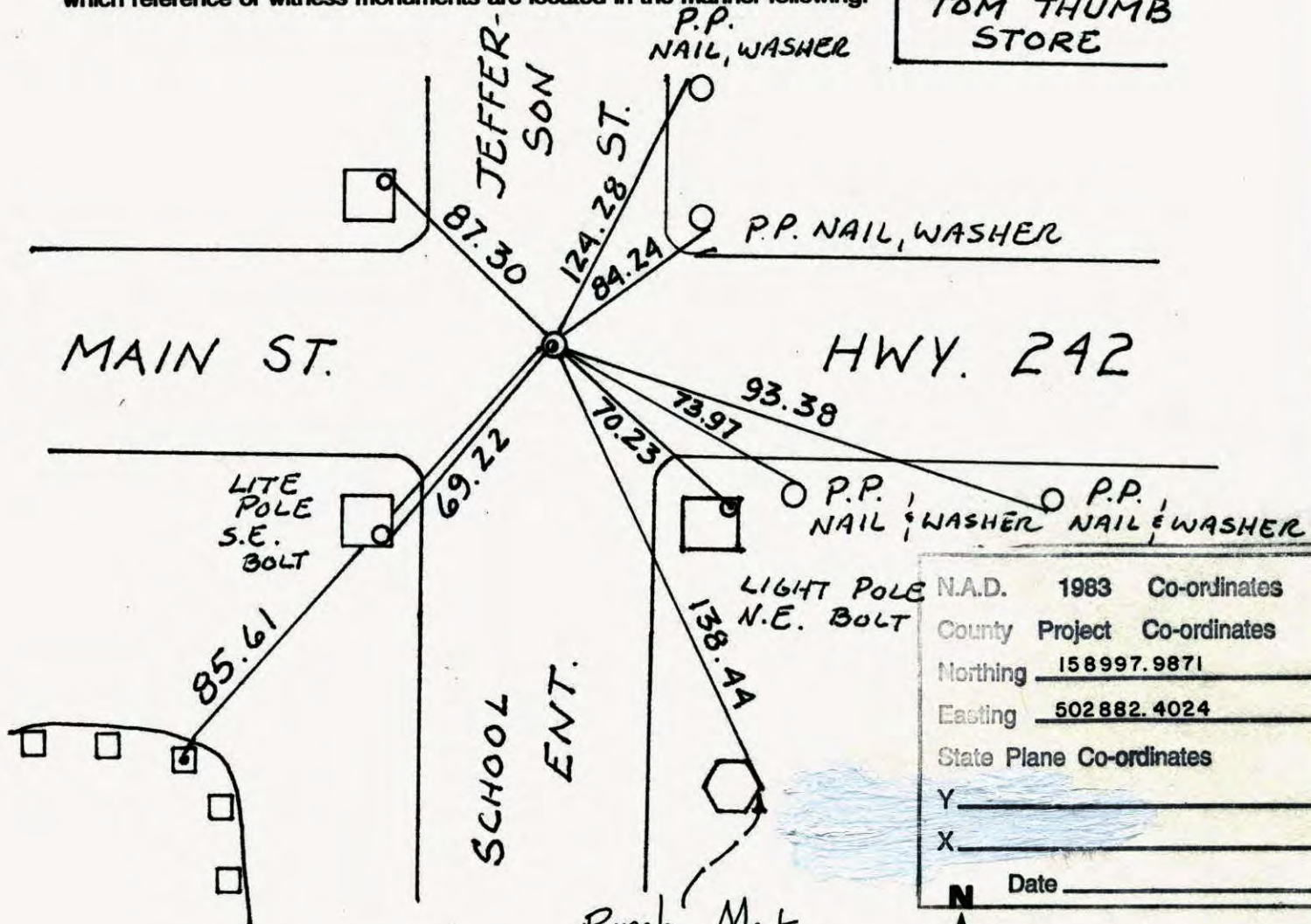
SOUTH $\frac{1}{4}$ Corner of Sec. 6 Township 31 Range 23

I hereby certify that on the 30 day of AUG., 1960, I found the described corner which was evidenced by FOUND I.P.

and I further certify that to perpetuate the location of said corner, I did, at the exact location thereof, place a permanent marker consisting of CAST IRON MON.

which reference or witness monuments are located in the manner following:

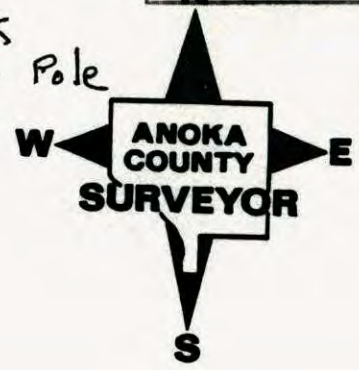
TOM THUMB STORE



N.A.D.	1983	Co-ordinates
County	Project	Co-ordinates
Northing		<u>158997.9871</u>
Easting		<u>502882.4024</u>
State Plane Co-ordinates		
Y	_____	
X	_____	
N	Date	_____

Revised date	Revised date	Revised date
<u>5-30-86</u>		
<u>8-3-90</u>		
<u>9-3-98</u>		
<u>8-24-04</u>		

Punch Mark
Steel Power Pole
(UP 5')



CERTIFICATE OF LOCATION OF GOVERNMENT CORNER

County of Anoka

State of Minnesota[†]

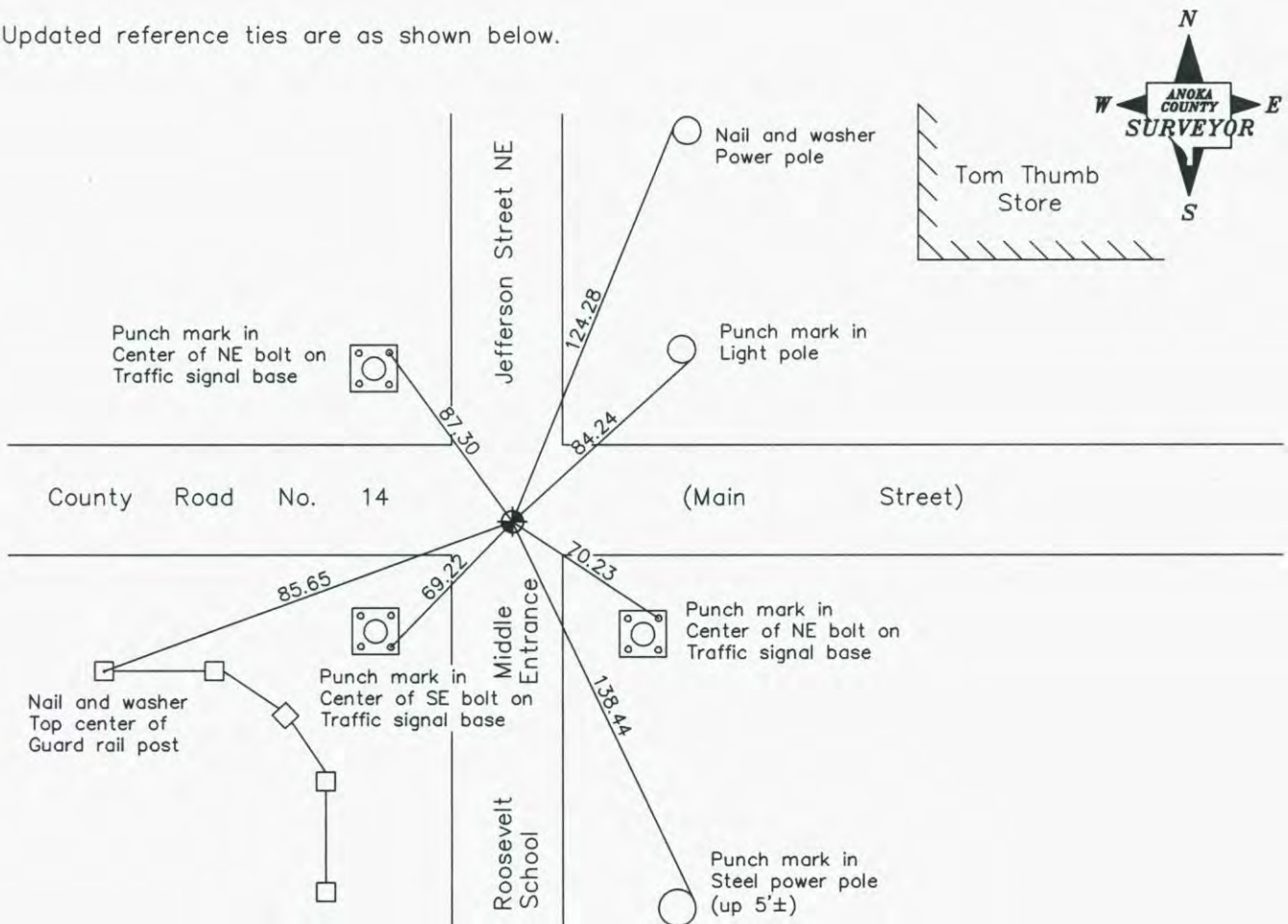
South 1/4 Corner of Sec. 6 Township 31 Range 23

On the 30th day of August, 1960, the described corner was evidenced by an iron pipe

and to perpetuate the location of said corner, at the exact location thereof, a permanent marker was placed consisting of a cast iron monument

AND on the 2nd day of May, 2006, said permanent marker was found and the ties were updated

Updated reference ties are as shown below.



Revised date
9/03/98
8/24/04
5/02/06

N.A.D. 1983 Coordinates (1996 Adjustment)	
County Project Coordinates	
Northing	<u>158997.9871</u>
Easting	<u>502882.4024</u>
Date	<u>9/03/98</u>

I hereby certify that this United States public land survey monument record is correct and complete to the best of my knowledge and belief.

Larry D. Hoium Date 5/02/06

Larry D. Hoium, Anoka County Surveyor

Minnesota License Number 18165

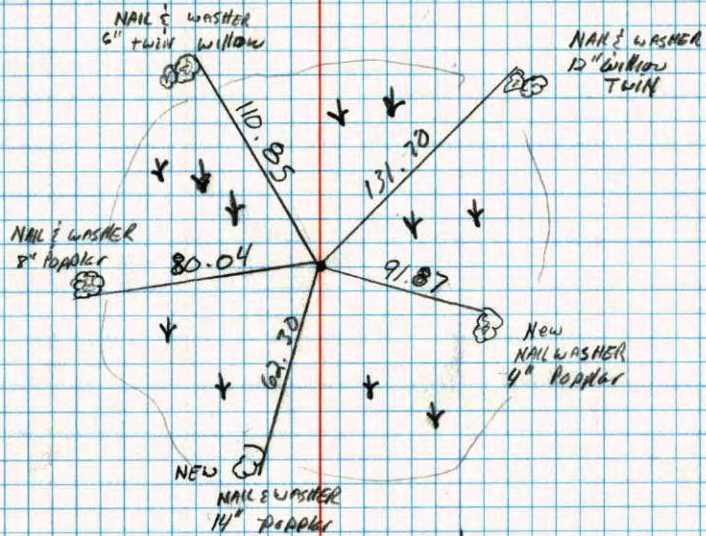
South

6

40

NORTH 1/4 corner of sec 7 T 32 R 22

Retied Red and white iron pipe

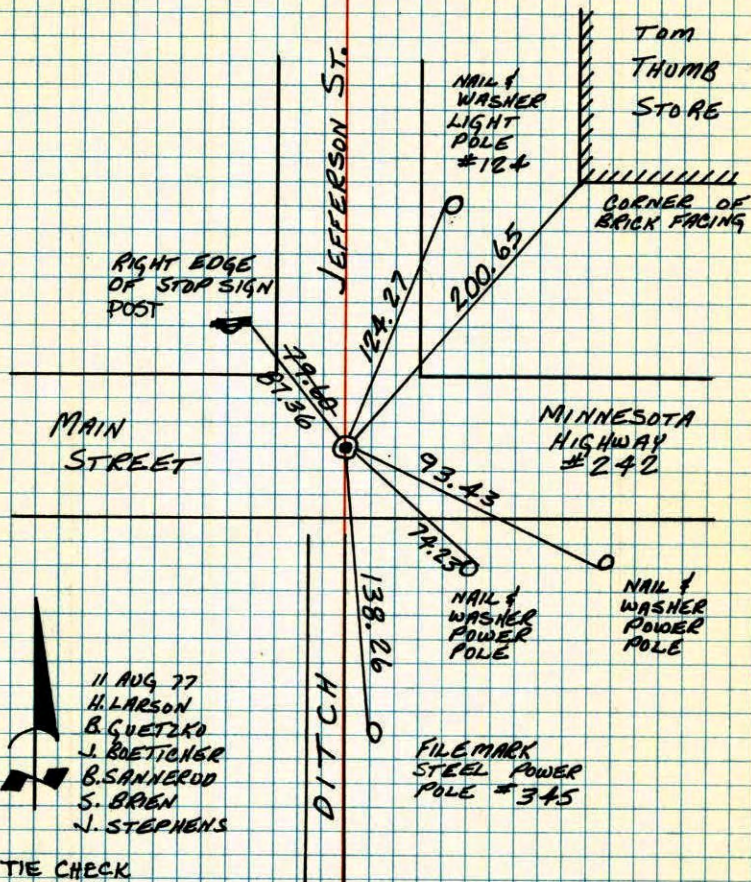


7-13-90
D. KLERSY
M. ZIMMERMAN

S 1/4 COR. SEC. 6 - T 31 - R 23

31

RETIED CAST IRON MONUMENT. CAST IRON FLUSH WITH PK'S 2.00' NORTH & EAST.



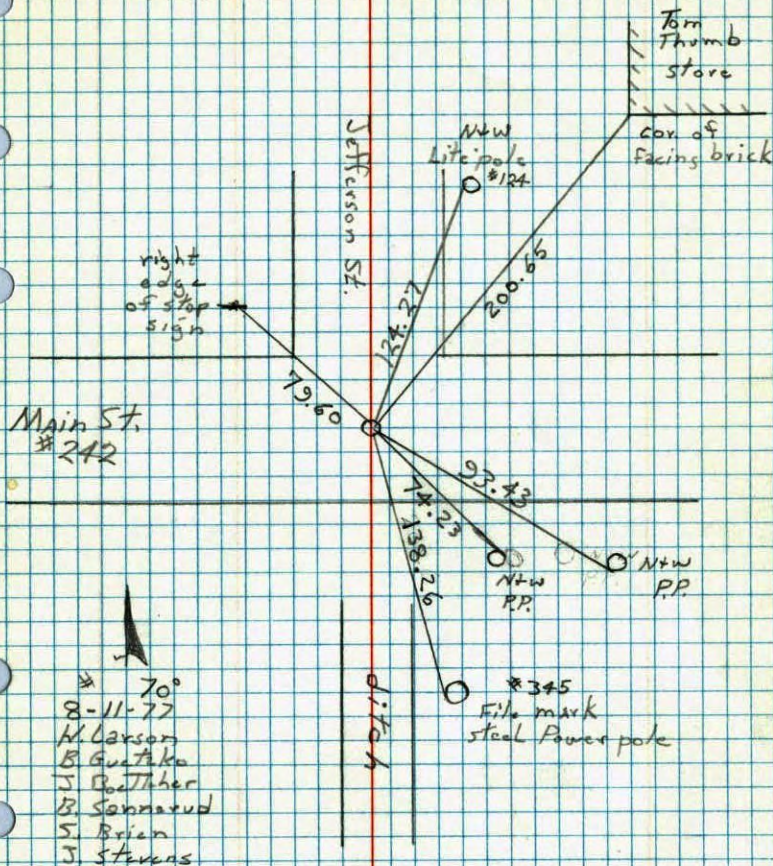
11 AUG 77
H. LARSON
B. GUETZKO
J. BOETTNER
B. SANNEROD
S. BREN
J. STEPHENS

TIE CHECK
6-5-80
B. STEPHENS
P. ROSS
P. HORNBY

TEMPERATURE CORRECTED ROLAND W. ANDERSON
AND HORIZONTALLY
TAPED MEASUREMENTS
COUNTY SURVEYOR
ANOKA COUNTY, MINNESOTA

5/4 Cor. Sec. 6 T31 R23

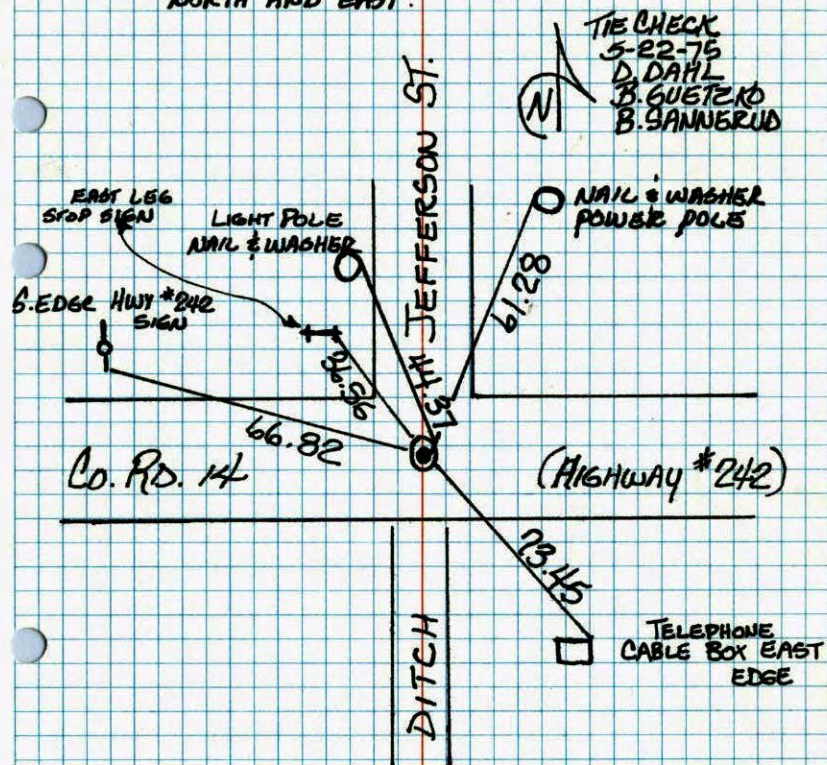
Retied cast iron monument, east
iron flush with Pk. 2.00' North East.



- # 70°
- 8-11-77
- A. Larson
- B. Gustafson
- J. Gustafson
- B. Sannerud
- S. Brien
- J. Stevens

S. 1/4 Cor. Sec. 6 T.31 R.23

FOUND IRON PIPE FLUSH. SET CAST
IRON FLUSH. SET P.K. NAILS 2.0'
NORTH AND EAST.

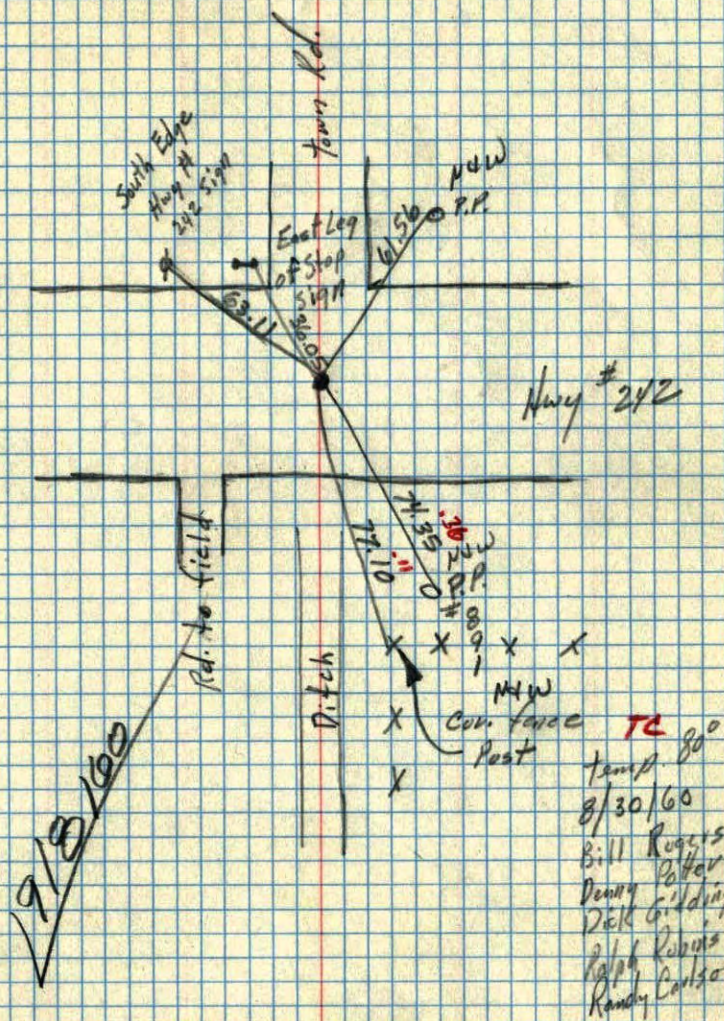


TEMPERATURE CORRECTED
AND HORIZONTALLY
TAPED MEASUREMENTS

ROLAND W. ANDERSON
COUNTY SURVEYOR
ANOKA COUNTY, MINNESOTA

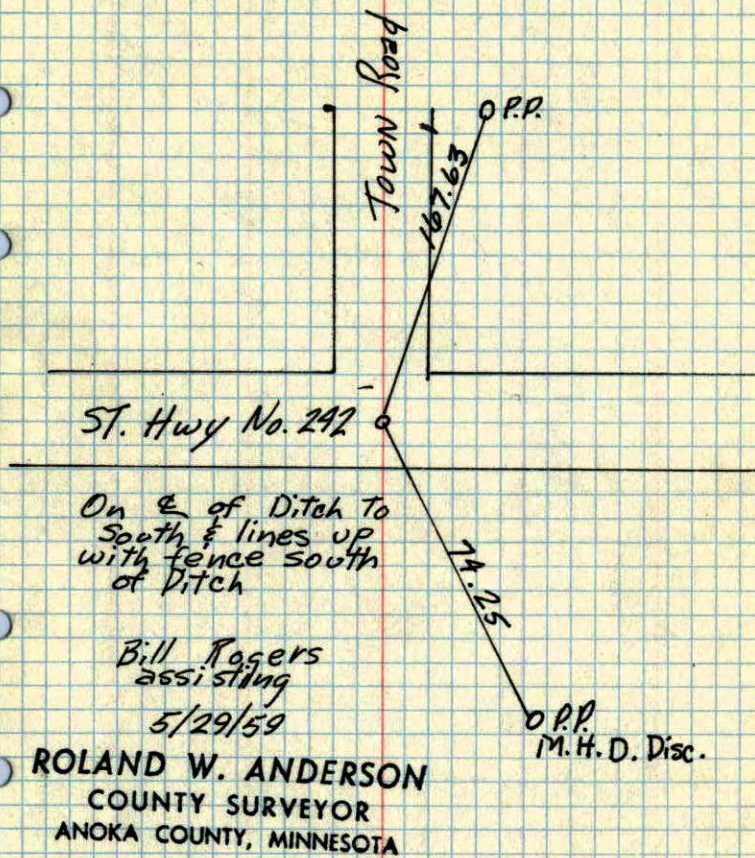
5/4 Cor. Sec. 6 T31 R23

Found Iron Pipe Flush, Replaced with
Cast Iron Man. flush

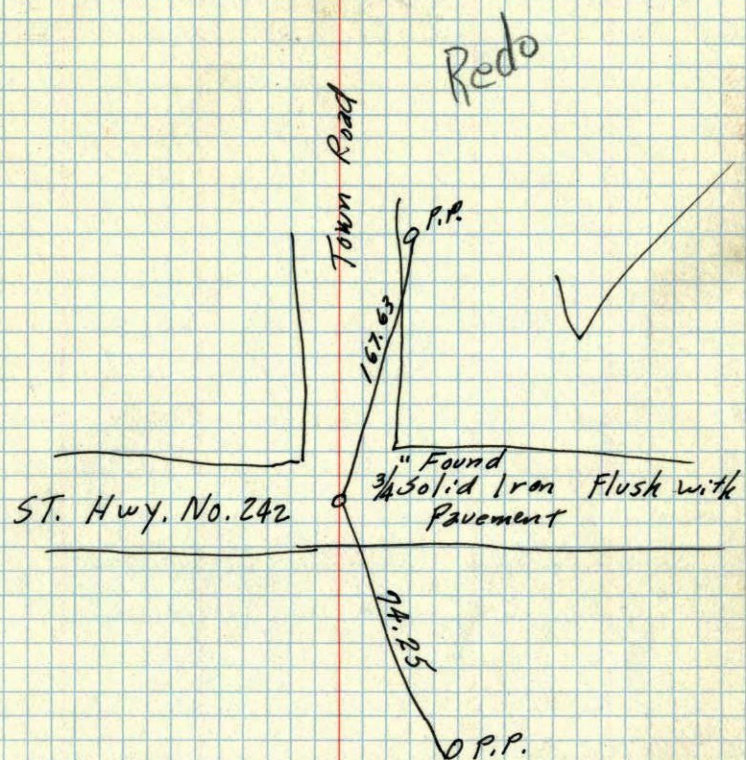


5/4 Cor. Sec. 6, T31, R23

3/4" Solid Iron
flush with
pavement



5 1/4 Corn Sec. 6, T31, R23



Redo

Town Road

ST. Hwy. No. 242

" Found
3/4 Solid Iron Flush with
Pavement

P.P.

M. H. D. Disc.

On E of Ditch to South
& lines up with Fence
South of Ditch

Bill Rogers Assisting

ROLAND W. ANDERSON
COUNTY SURVEYOR
ANOKA COUNTY, MINNESOTA

5/29/59