

# CERTIFICATE OF LOCATION OF GOVERNMENT CORNER

County of Anoka

State of Minnesota

West 1/4 Corner of Sec. 8 Township 31 Range 23

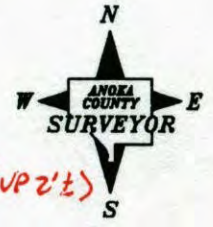
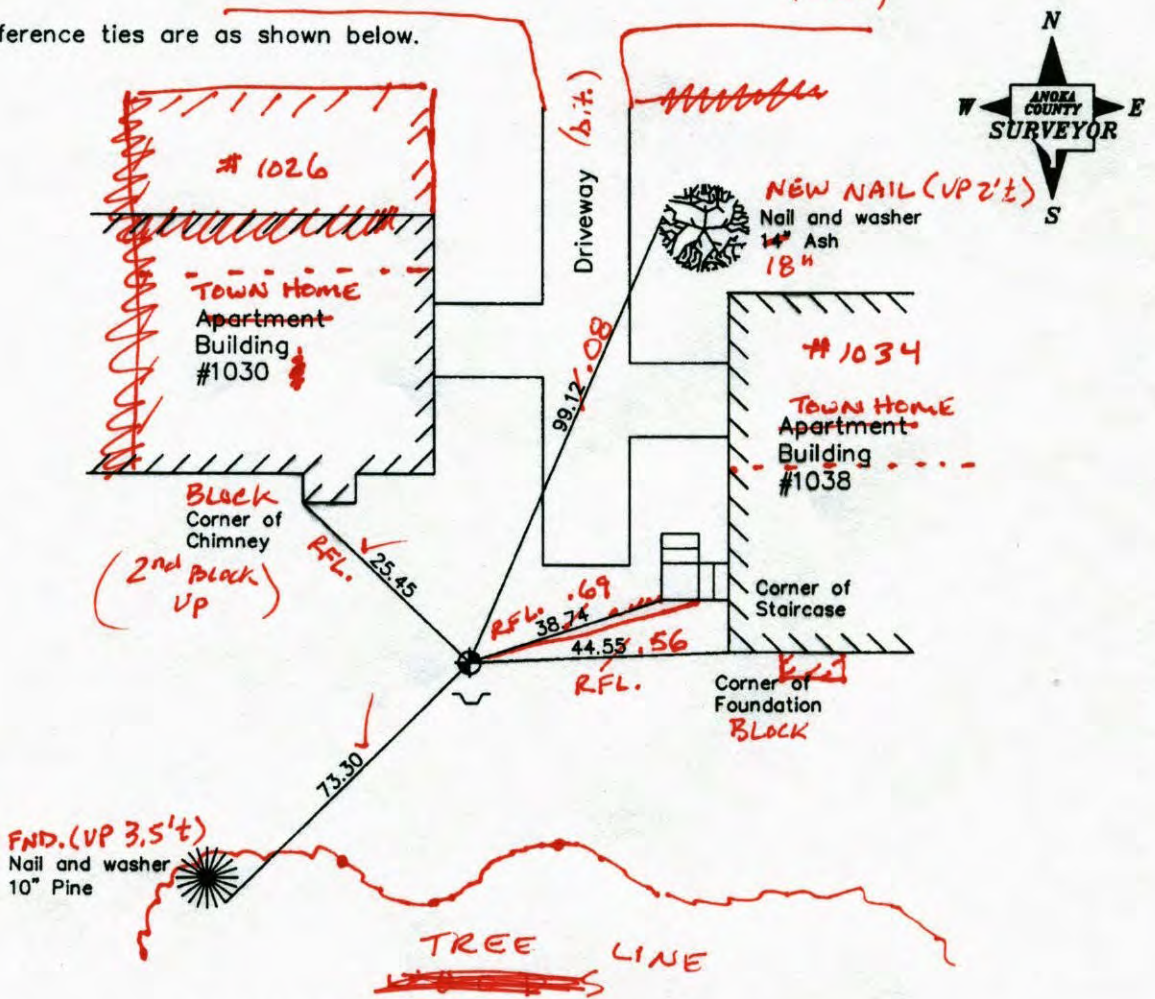
On the 6th day of February, 1964, the described corner was evidenced by a 3/4" iron pipe

and to perpetuate the location of said corner, at the exact location thereof, a permanent marker was placed consisting of a cast iron monument with a sign and post on the south side

AND on the 12th day of July, 2006, said permanent marker was found and the ties were updated

121ST LN. NE. (b.t.)

Updated reference ties are as shown below.



5-9-14  
JS-SS  
T/T

Revised date
7/28/95
9/03/98
7/12/06

N.A.D. 1983 Coordinates (1996 Adjustment)	
County Project Coordinates	
Northing	156382.6792
Easting	505526.0422
Date	9/03/98

I hereby certify that this United States public land survey monument record is correct and complete to the best of my knowledge and belief.

*Larry D. Hoium* Date 7/12/06

Larry D. Hoium, Anoka County Surveyor  
Minnesota License Number 18165

VRS  
3DR = 0.06    N = 156382.6135    E = 505526.59479

# CERTIFICATE OF LOCATION OF GOVERNMENT CORNER

County of Anoka

State of Minnesota

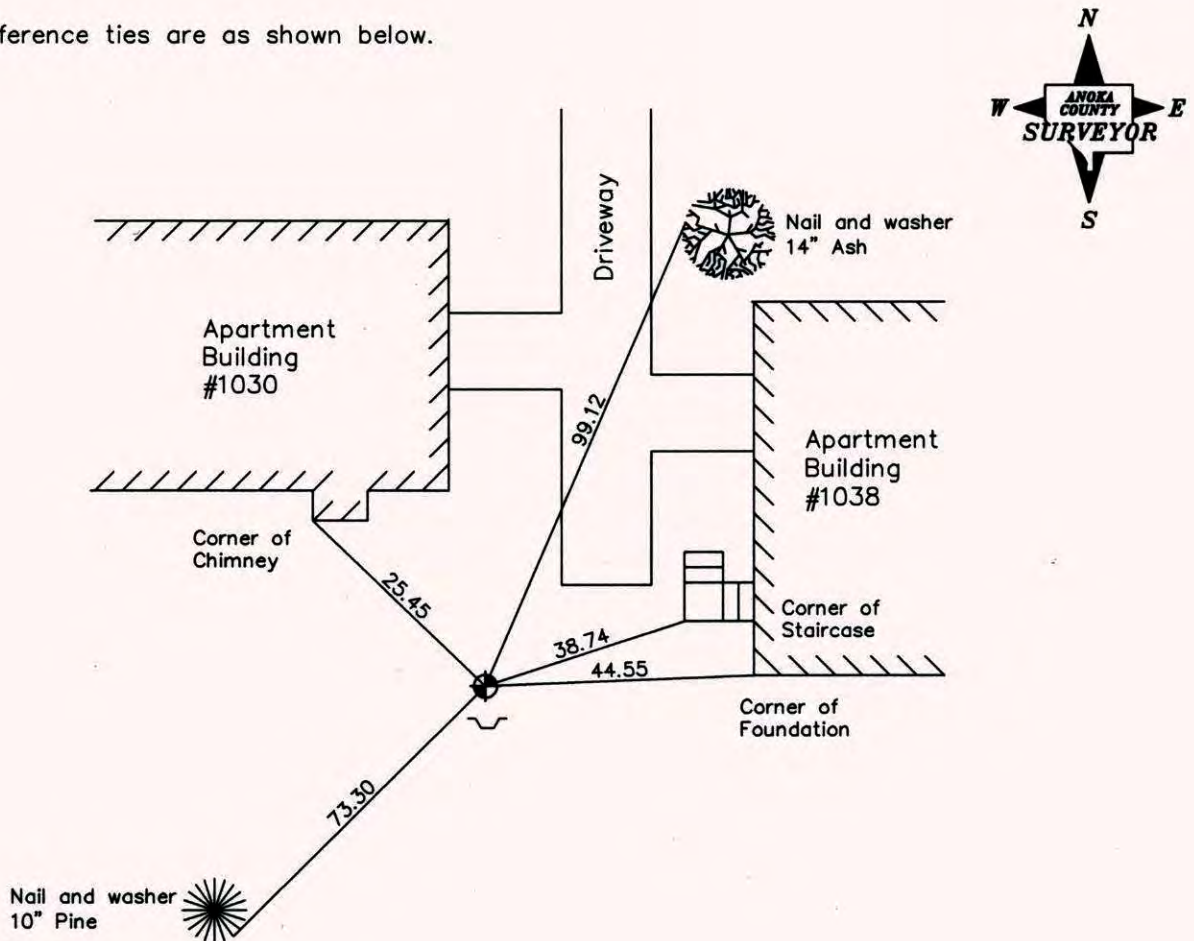
West 1/4 Corner of Sec. 8 Township 31 Range 23

On the 6th day of February, 1964, the described corner was evidenced by a 3/4" iron pipe

and to perpetuate the location of said corner, at the exact location thereof, a permanent marker was placed consisting of a cast iron monument with a sign and post on the south side

AND on the 12th day of July, 2006, said permanent marker was found and the ties were updated

Updated reference ties are as shown below.



Revised date
7/28/95
9/03/98
7/12/06

N.A.D. 1983 Coordinates (1996 Adjustment)	
County Project Coordinates	
Northing	<u>156382.6792</u>
Easting	<u>505526.0422</u>
Date	<u>9/03/98</u>

I hereby certify that this United States public land survey monument record is correct and complete to the best of my knowledge and belief.

*Larry D. Hoium* Date 7/12/06

Larry D. Hoium, Anoka County Surveyor

Minnesota License Number 18165

# CERTIFICATE OF LOCATION OF GOVERNMENT CORNER

County of Anoka

State of Minnesota

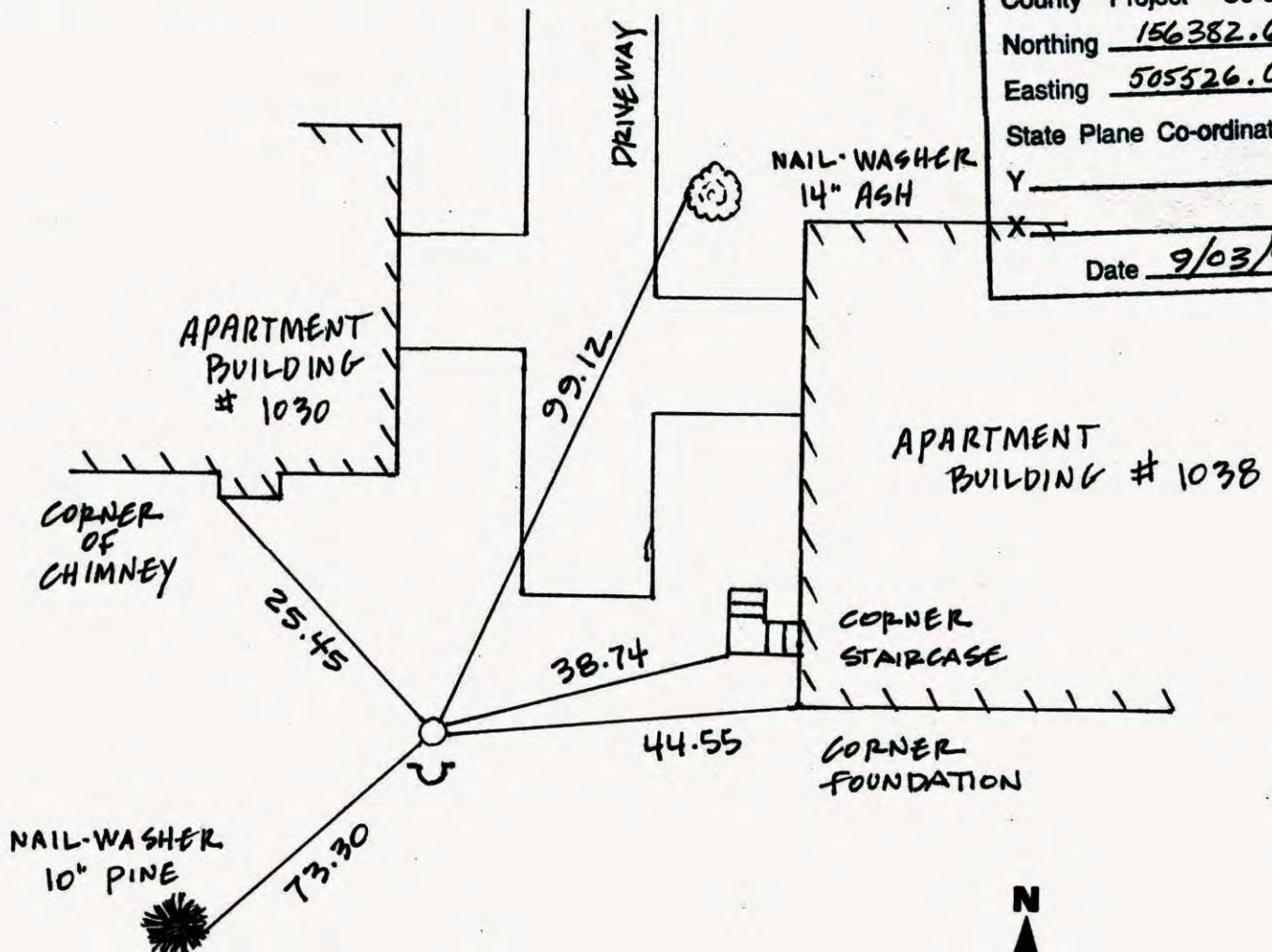
WEST 1/4 Corner of Sec. 8 Township 31 Range 23

I hereby certify that on the 6<sup>TH</sup> day of FEBRUARY, 1964, I found the described corner which was evidenced by 3/4" IRON PIPE

and I further certify that to perpetuate the location of said corner, I did, at the exact location thereof, place a permanent marker consisting of CAST IRON MONUMENT SIGN AND POST ON SOUTH SIDE

which reference or witness monuments are located in the manner following:

N.A.D.	1983	Co-ordinates
County	Project	Co-ordinates
Northing	<u>156382.6792</u>	
Easting	<u>505526.0422</u>	
State Plane Co-ordinates		
Y	_____	
Date	<u>9/03/98</u>	



Revised date	Revised date	Revised date
7-8-83		
6-5-86		
7-3-90		
7-28-95		
9-3-98		
7-12-06		



# CERTIFICATE OF LOCATION OF GOVERNMENT CORNER

County of Anoka

State of Minnesota

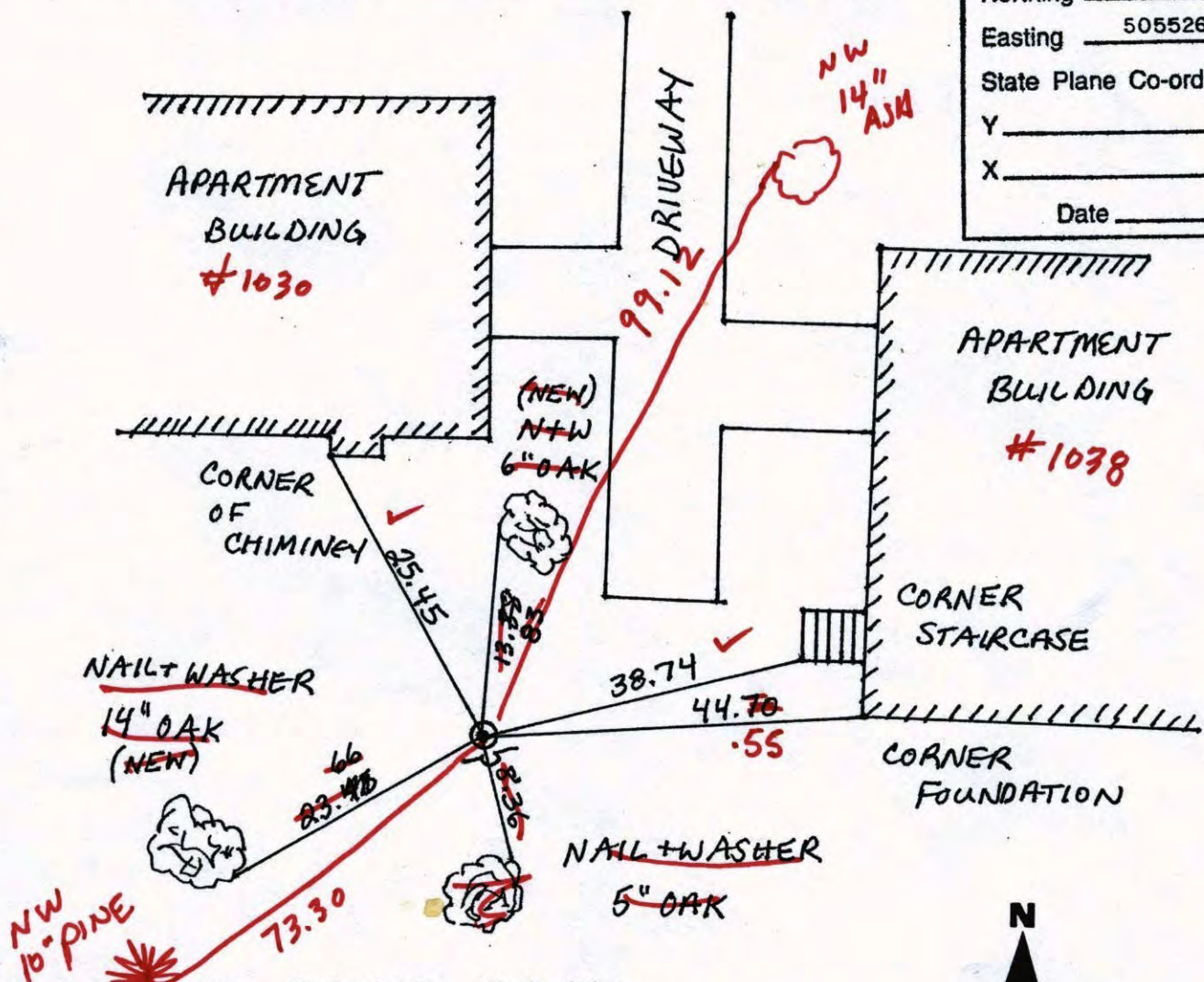
WEST QUARTER Corner of Sec. 8 Township 31 Range 23

I hereby certify that on the 6<sup>th</sup> day of FEBRUARY, 19 64, I found the described corner which was evidenced by 3/4" IRON PIPE

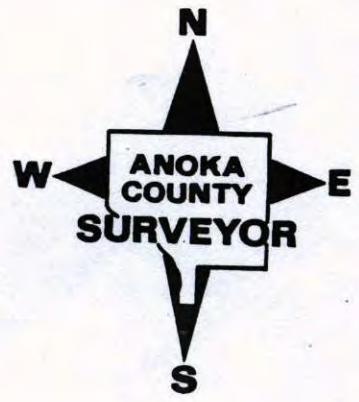
and I further certify that to perpetuate the location of said corner, I did, at the exact location thereof, place a permanent marker consisting of CAST IRON MONUMENT SIGN AND POST ON SOUTH SIDE

which reference or witness monuments are located in the manner following:

N.A.D.	1983	Co-ordinates
County Project		Co-ordinates
Northing	156382.6792	
Easting	505526.0422	
State Plane Co-ordinates		
Y	_____	
X	_____	
Date _____		



Revised date	Revised date	Revised date
7-8-83		
6-5-86	7-12-06	
7-3-90		
7-28-95		
9-3-98		



# CERTIFICATE OF LOCATION OF GOVERNMENT CORNER

County of Anoka                      State of Minnesota

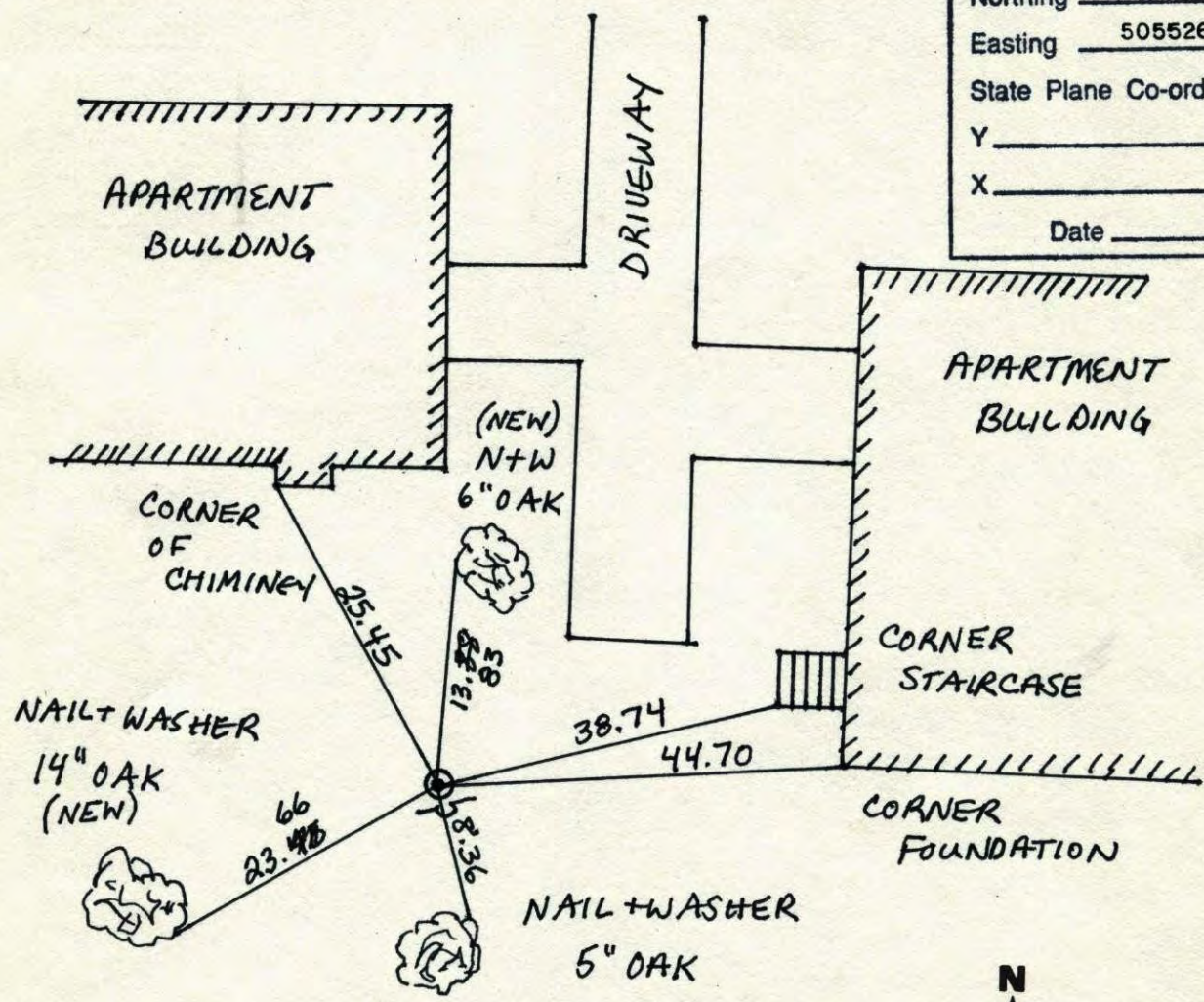
WEST QUARTER Corner of Sec. 8 Township 31 Range 23

I hereby certify that on the 6<sup>th</sup> day of FEBRUARY, 19 64, I found the described corner which was evidenced by 3/4" IRON PIPE

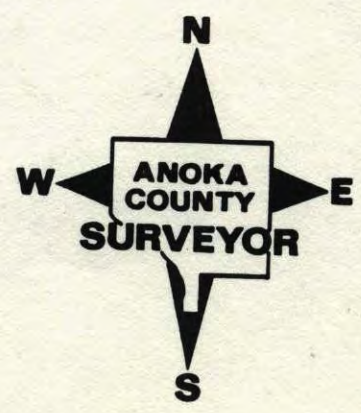
and I further certify that to perpetuate the location of said corner, I did, at the exact location thereof, place a permanent marker consisting of CAST IRON MONUMENT SIGN AND POST ON SOUTH SIDE

which reference or witness monuments are located in the manner following:

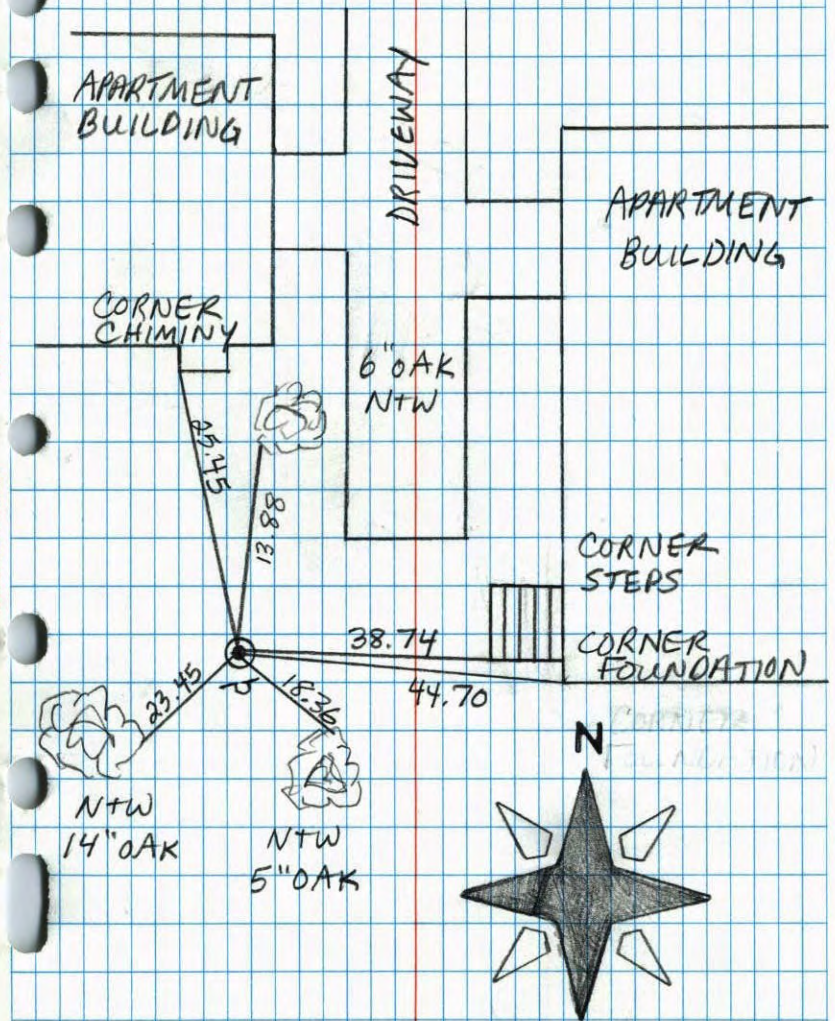
N.A.D.	1983	Co-ordinates
County	Project	Co-ordinates
Northing	156382.6792	
Easting	505526.0422	
State Plane Co-ordinates		
Y	_____	
X	_____	
Date _____		



Revised date	Revised date	Revised date
7-8-83		
6-5-86		
7-3-90		
7-28-95		
9-3-98		



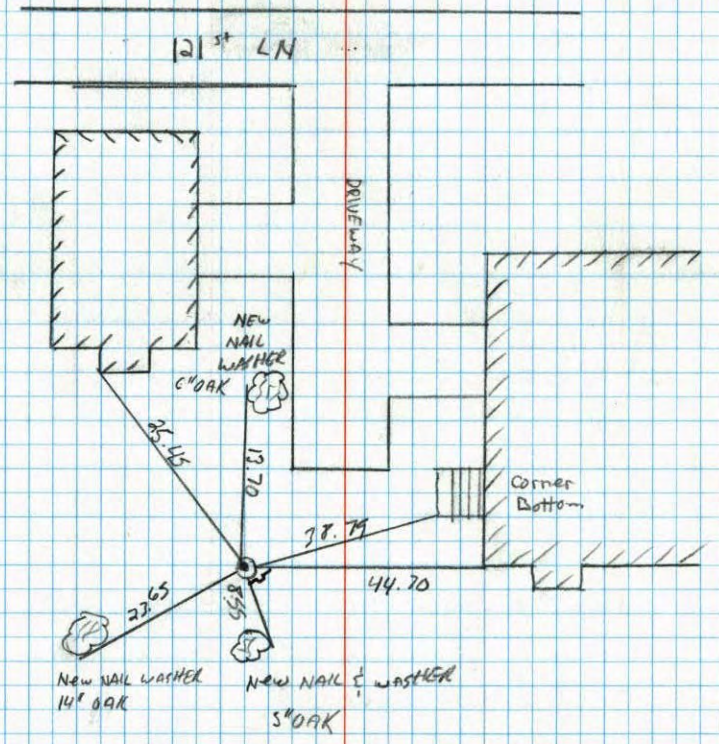
WEST 1/4 SEC. 8 TW. 31 R. 23  
RETIE CAST IRON MONUMENT  
SIGN + POST SOUTH SIDE



JASON + JOSH ANDERSON 7-28-95

west 1/4 corner sec 8 T 31 R 23  
Retied cast iron monument

7-3-90  
D. Klersy  
Mr. Zimmerman

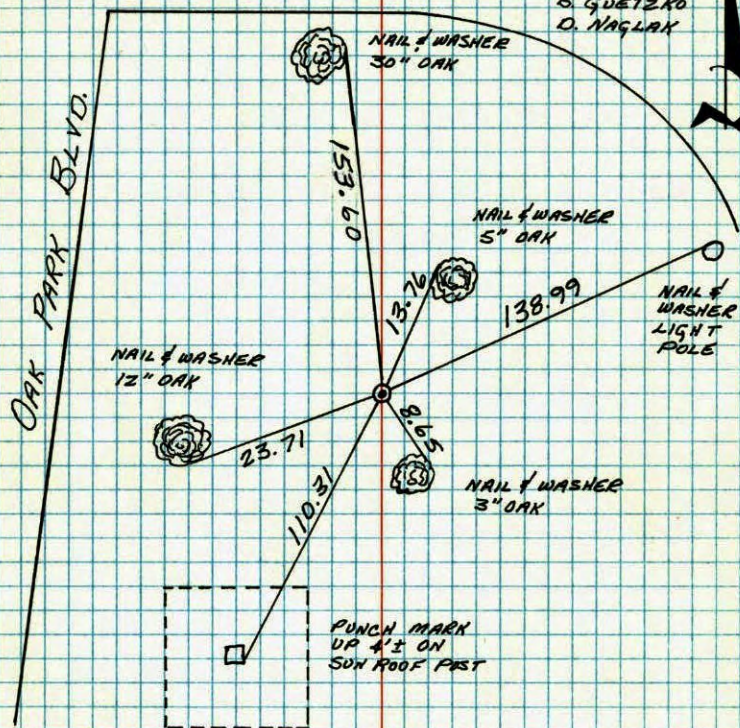


W<sup>1</sup>/<sub>4</sub> CORNER SECTION 8-T31-R23

FOUND BROKEN CAST IRON MONUMENT AND ONE REMAINING TIE. BOTTOM OF CAST IRON STILL IN PLACE. RETIED.

\* RESET NEW C.I. WITH SIGN + POST  
3-31-81 H. LARSON

28 JAN 81  
H. LARSON  
B. GUETZKO  
D. NAGLAK



TEMPERATURE CORRECTED  
AND HORIZONTALLY  
TAPED MEASUREMENTS

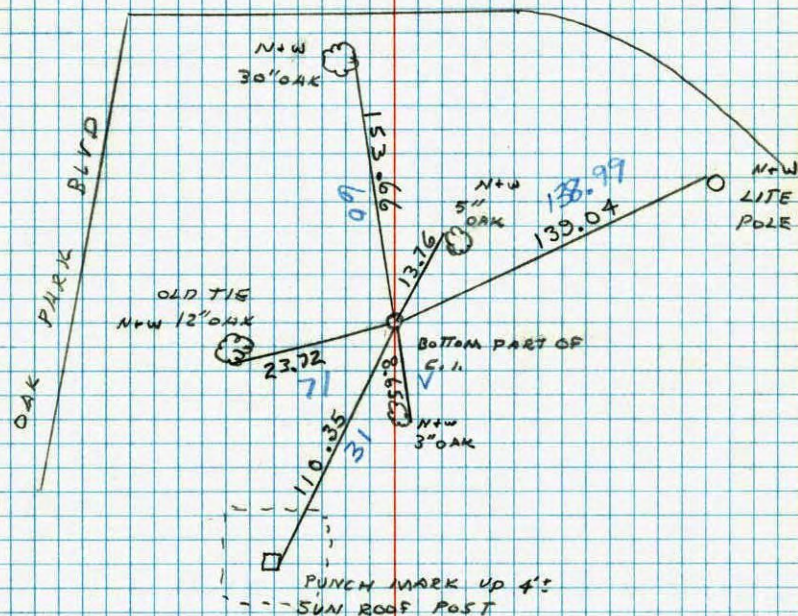
ROLAND W. ANDERSON  
COUNTY SURVEYOR  
BNOKA COUNTY, MINNESOTA

W<sup>1</sup>/<sub>4</sub> COR. SECTION 8 T31 R23

FOUND BROKEN CAST IRON AND ONE REMAINING TIE. BOTTOM OF CAST IRON STILL IN PLACE.

RETIED.

200 14°  
1-28-81  
H. LARSON  
B. GUETZKO  
D. NAGLAK



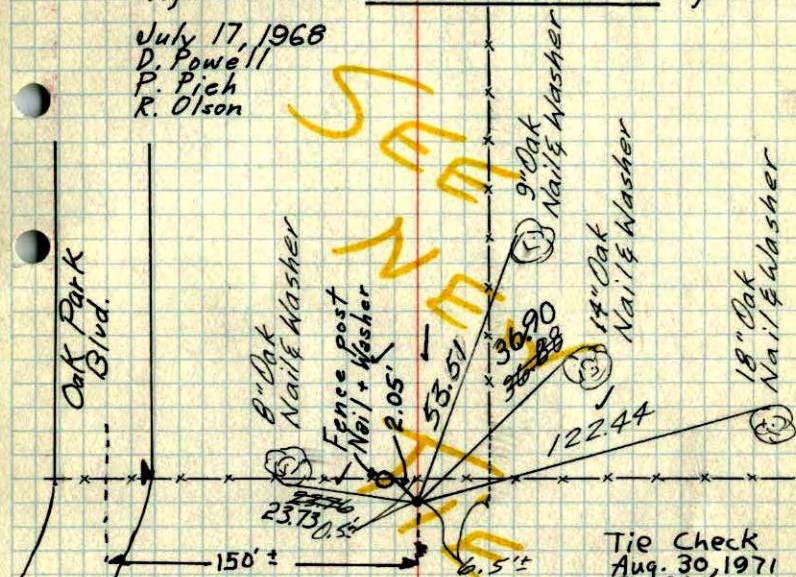
TEMPERATURE CORRECTED  
AND HORIZONTALLY  
TAPED MEASUREMENTS

ROLAND W. ANDERSON  
COUNTY SURVEYOR  
BNOKA COUNTY, MINNESOTA

W 1/4 Cor. Sec. 8-31-23

Found  $\frac{3}{4}$ " iron pipe set by Suburban  
Engineering Co. Inc.Replaced with Cast Iron Monument up 0.2'±.

July 17, 1968

D. Powell  
P. Pich  
R. Olson

Feb. 6, 1964

J. Oliver  
M. D. Anderson

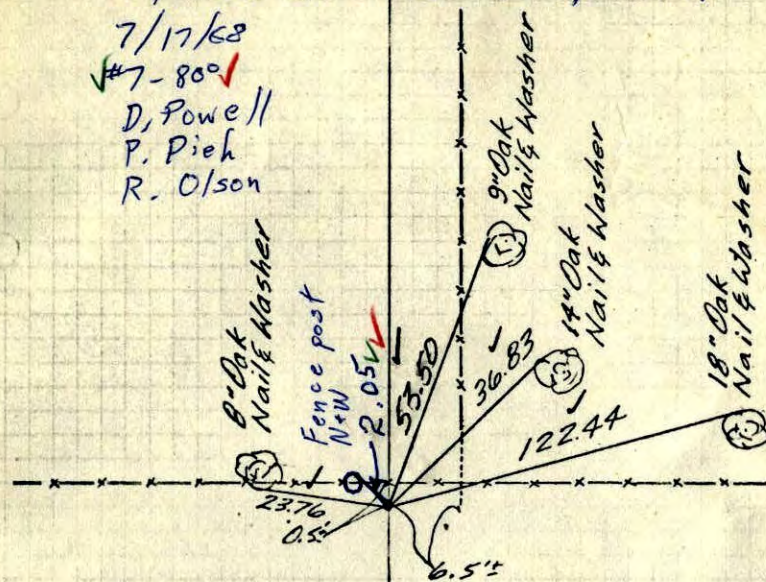
Retie 9/14/64

M. D. Anderson  
J. DunlopTIE CHECK  
10 AUG 77  
R. SANNERUD  
S. BRIEN  
J. STEPHENSTIE CHECK  
6-4-80  
B. STEPHENS  
P. ROSS  
P. HORNBYROLAND W. ANDERSON  
COUNTY SURVEYOR  
ANOKA COUNTY, MINNESOTATEMPERATURE CORRECTED  
AND HORIZONTALLY  
TAPED MEASUREMENTSTie Check  
Aug. 30, 1971  
B. Olson  
J. BoettcherTie Check  
May 15, 1975  
D. Dahl  
B. Sannerud  
J. Boettcher

W 1/4 Cor. Sec. 8-31-23

Found  $\frac{3}{4}$ " iron pipe set by Suburban  
Engineering Co. Inc.Replaced with C.I. Mon. up 0.2'±.

7/17/68

#7-80°  
D. Powell  
P. Pich  
R. Olson

Feb. 6, 1964

J. Oliver  
M. D. Anderson

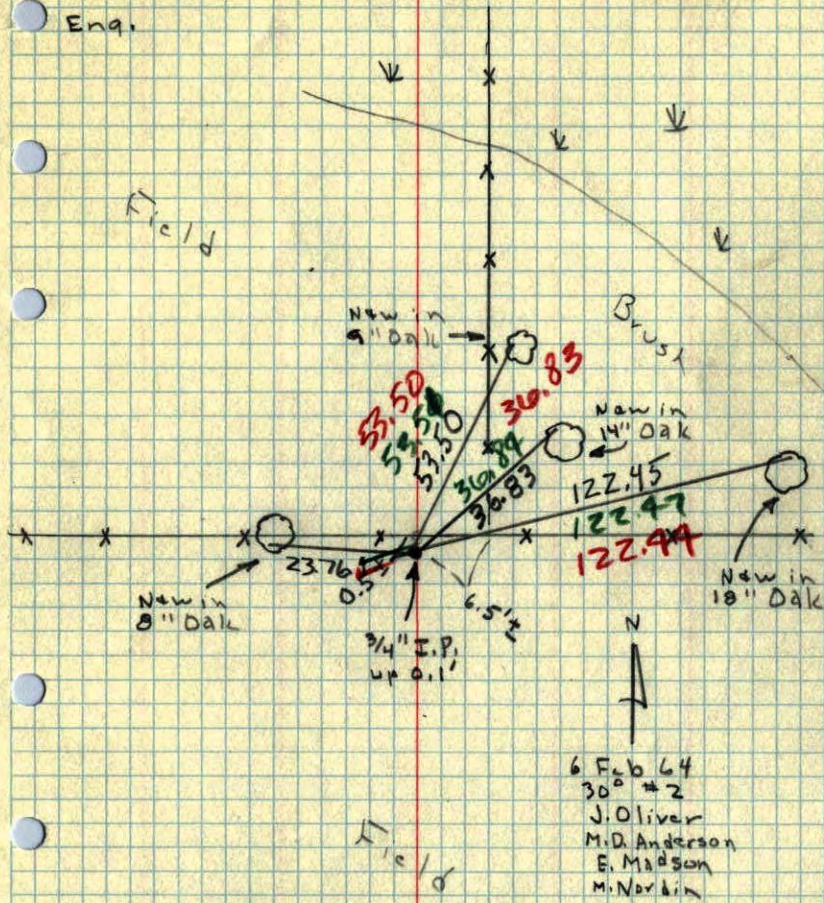
Retie 9/14/64

M. D. Anderson  
J. DunlopROLAND W. ANDERSON  
COUNTY SURVEYOR  
ANOKA COUNTY, MINNESOTATEMPERATURE CORRECTED  
AND HORIZONTALLY  
TAPED MEASUREMENTS



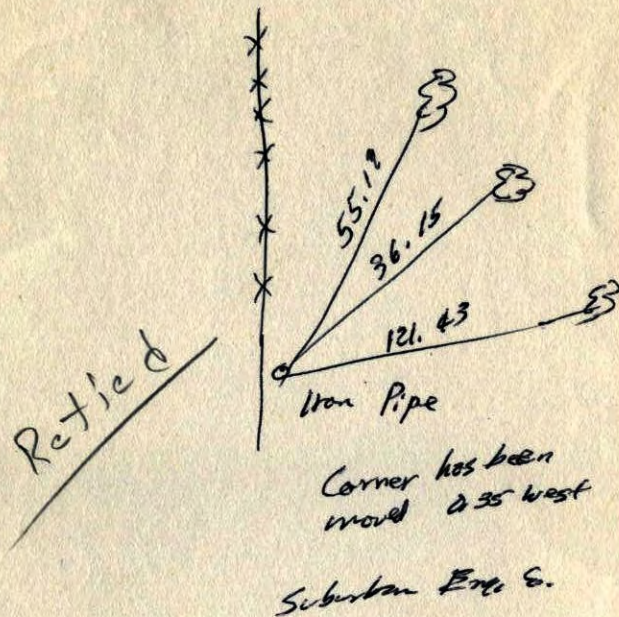
W 1/4 Cor. Sec. 8, T31, R23

Found 3/4" I.P. (up oil) set by Suburban  
Eng.



TEMP & TAPE  
CORR IN RED

W 1/4 Cor. Sec. 8, T31, R23



Jan. 7, 1963

S<sup>1</sup>/<sub>2</sub> NE<sup>1</sup>/<sub>4</sub> Sec. 8, 31-23

