

# CERTIFICATE OF LOCATION OF GOVERNMENT CORNER

County of Anoka

State of Minnesota

**SIDW.**

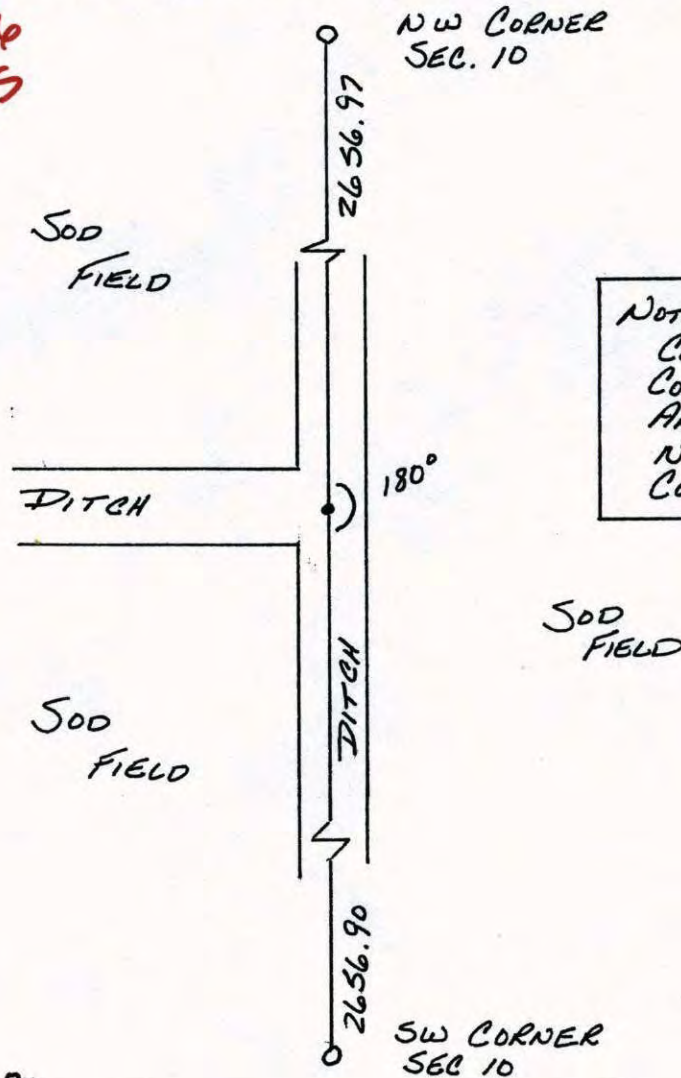
WEST 1/4 Corner of Sec. 10 Township 31 Range 23

I hereby certify that on the 16<sup>TH</sup> day of SEPTEMBER, 1963, I found the described corner which was evidenced by AREA RESURVEY

and I further certify that to perpetuate the location of said corner, I did, at the exact location thereof, place a permanent marker consisting of SEE NOTE BELOW

which reference or witness monuments are located in the manner following:

**RE-SET  
WITNESS  
RETIED 6-15-06  
SEE NEW TIES**



**NOTE: CANNOT OCCUPY CORNER IN DITCH. CORNER IS HALFWAY AND ON LINE BETWEEN NW CORNER & SW CORNER SECTION 10**

Revised date
6-18-87
7-28-95

By
LARSON

Minnesota State Plane Coordinates  
South Zone

Y \_\_\_\_\_ X \_\_\_\_\_

County Surveyor \_\_\_\_\_ Date \_\_\_\_\_  
Registered Land Surveyor No. \_\_\_\_\_

# CERTIFICATE OF LOCATION OF GOVERNMENT CORNER

County of Anoka

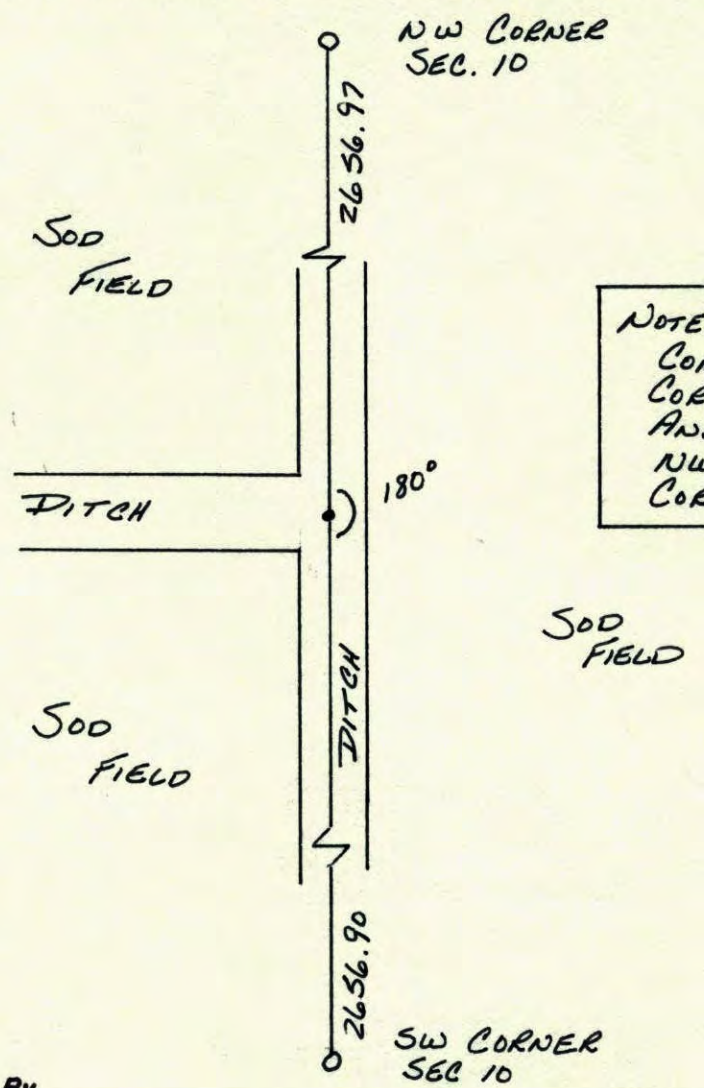
State of Minnesota

WEST 1/4 Corner of Sec. 10 Township 31 Range 23

I hereby certify that on the 16<sup>TH</sup> day of SEPTEMBER, 1963, I found the described corner which was evidenced by AREA RESURVEY

and I further certify that to perpetuate the location of said corner, I did, at the exact location thereof, place a permanent marker consisting of SEE NOTE BELOW

which reference or witness monuments are located in the manner following:



(No G.P.S.)

NOTE: CANNOT OCCUPY CORNER IN DITCH. CORNER IS HALFWAY AND ON LINE BETWEEN NW CORNER & SW CORNER SECTION 10

Revised date
6-18-87
7-28-95

By
LARSON

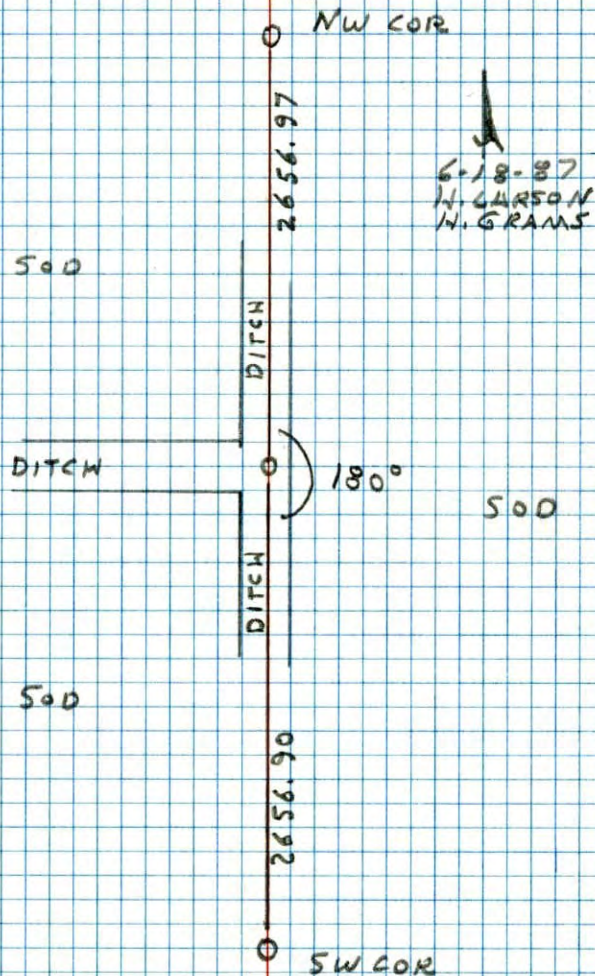
Minnesota State Plane Coordinates  
South Zone

Y \_\_\_\_\_ X \_\_\_\_\_

\_\_\_\_\_,  
County Surveyor Date  
Registered Land Surveyor No. \_\_\_\_\_

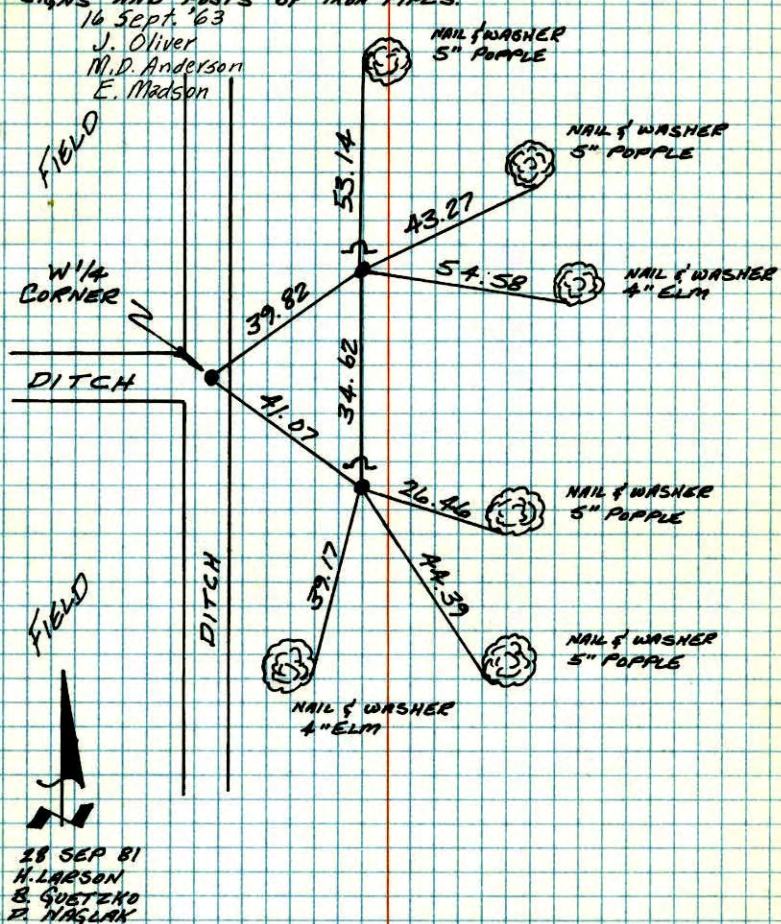
W<sup>1</sup>/<sub>4</sub> COR. SEC. 10 T31 R 23

CANNOT OCCUPY CORNER IN  
DITCH. COR. HALFWAY AND ON LINE.



34  
W<sup>1</sup>/<sub>4</sub> CORNER SECTION 10-T31-R23

SET AND TIED  $\frac{1}{2}$ " IRON PIPES AS TIES TO W<sup>1</sup>/<sub>4</sub> CORNER.  
W<sup>1</sup>/<sub>4</sub> CORNER NOT IN PLACE BECAUSE OF DITCHES.  
SIGNS AND POSTS BY IRON PIPES.



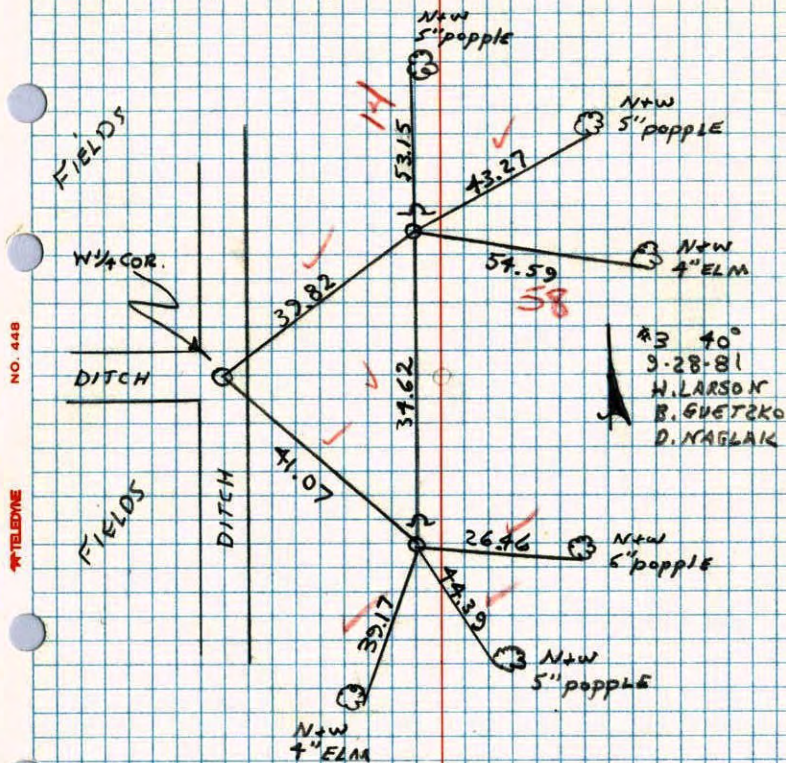
TEMPERATURE CORRECTED  
AND HORIZONTALLY  
TAPED MEASUREMENTS

ROLAND W. ANDERSON  
COUNTY SURVEYOR  
ANOKA COUNTY, MINNESOTA,

W 1/4 CORNER SECTION 10 T31 R23

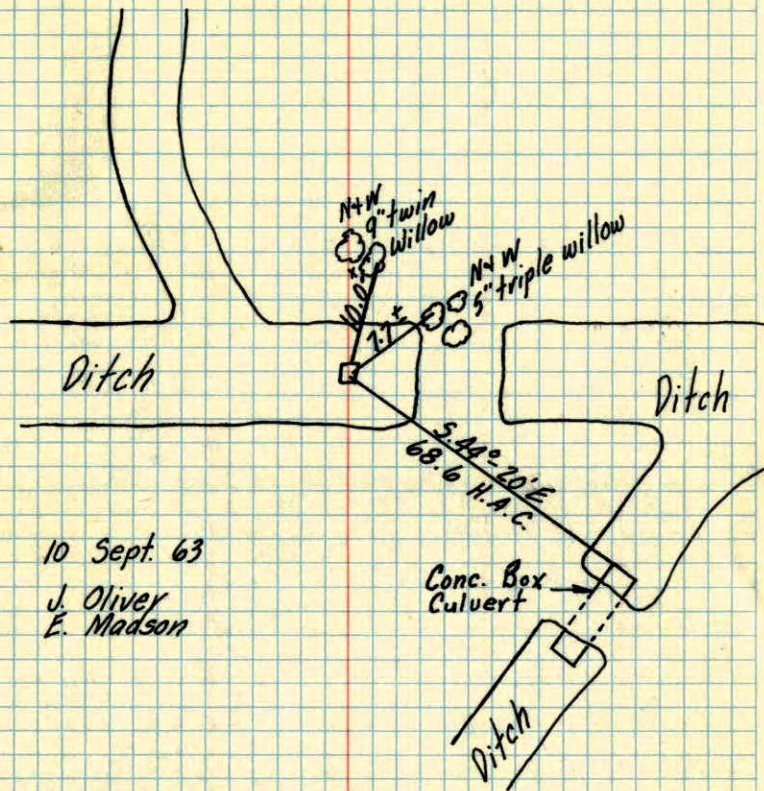
SET AND TIED 1/2" IRON PIPES AS TIES TO W 1/4 COR.  
W 1/4 COR. NOT IN PLACE BECAUSE OF DITCHES.

SIGN AND PASTS BY IRON PIPES



W 1/4 Cor. Sec. 11 T31, R23

Found 4" Sq. Conc. Mon. in middle of ditch  
under 4" of water.



10 Sept. 63

J. Oliver  
E. Madson

TEMPERATURE CORRECTED  
AND HORIZONTALLY  
TAPED MEASUREMENTS

ROLAND W. ANDERSON  
COUNTY SURVEYOR  
ANOKA COUNTY, MINNESOTA