

PARK

# CERTIFICATE OF LOCATION OF GOVERNMENT CORNER

County of Anoka State of Minnesota

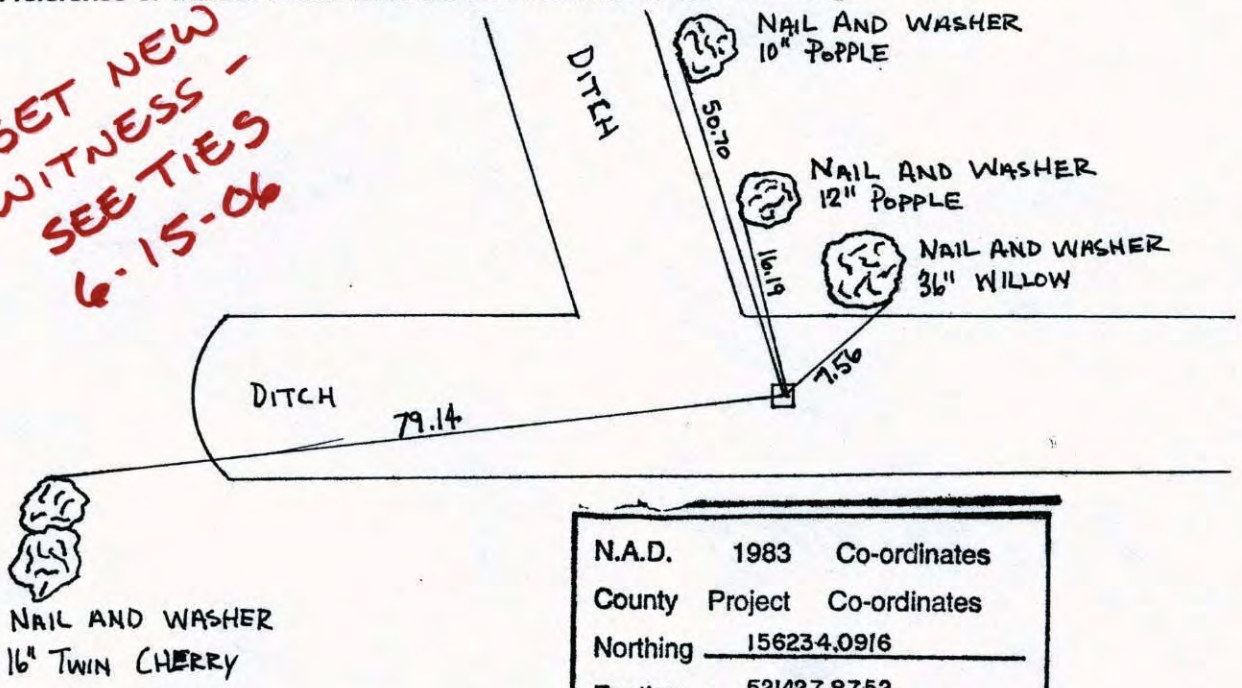
EAST 1/4 Corner of Sec. 10 Township 31 Range 23

I hereby certify that on the 10<sup>TH</sup> day of SEPTEMBER, 19 63, I found the described corner which was evidenced by CONCRETE MONUMENT

and I further certify that to perpetuate the location of said corner, I did, at the exact location thereof, place a permanent marker consisting of SAME

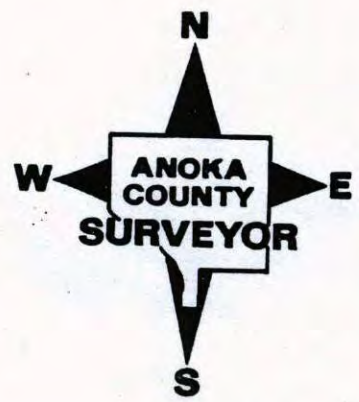
which reference or witness monuments are located in the manner following:

SET NEW  
WITNESS -  
SEE TIES  
6-15-06



N.A.D.	1983	Co-ordinates
County	Project	Co-ordinates
Northing		<u>156234.0916</u>
Easting		<u>521427.8752</u>
State Plane Co-ordinates		
Y		_____
X		_____
Date _____		

Revised date	Revised date	Revised date
1-15-74		
1-11-88		
8-8-90		
7-28-95		
11-16-99		



# CERTIFICATE OF LOCATION OF GOVERNMENT CORNER

County of Anoka

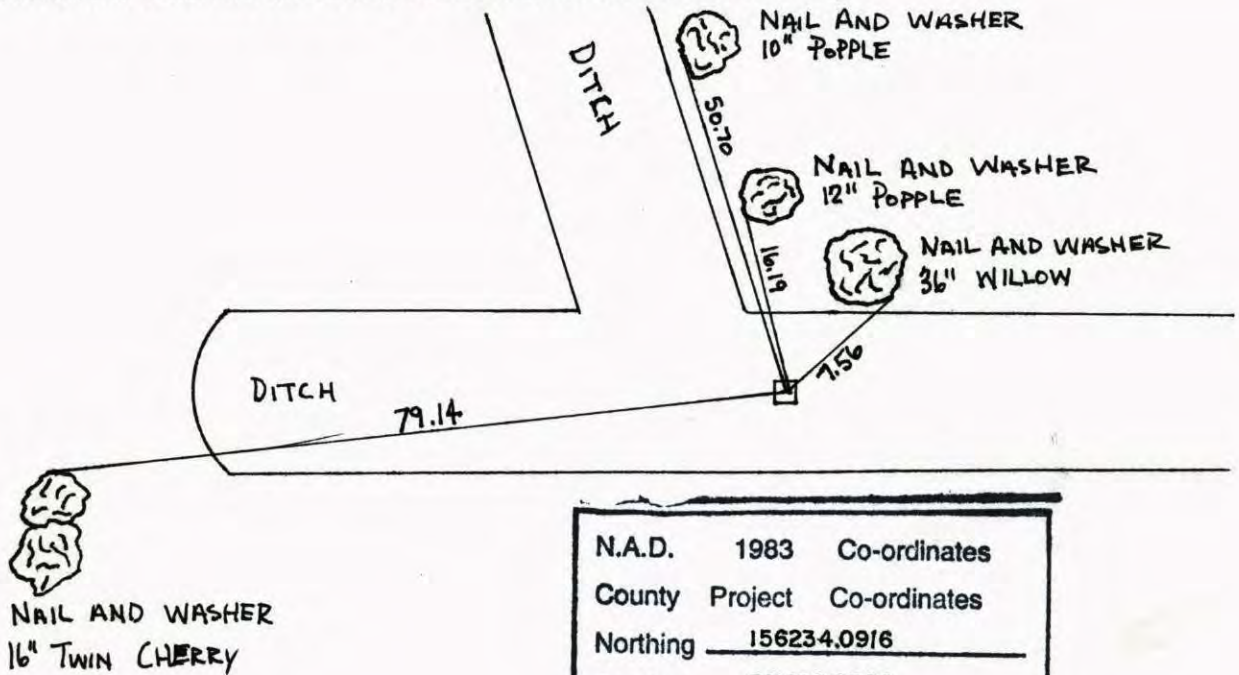
State of Minnesota

EAST 1/4 Corner of Sec. 10 Township 31 Range 23

I hereby certify that on the 10<sup>TH</sup> day of SEPTEMBER, 19 63, I found the described corner which was evidenced by CONCRETE MONUMENT

and I further certify that to perpetuate the location of said corner, I did, at the exact location thereof, place a permanent marker consisting of SAME

which reference or witness monuments are located in the manner following:

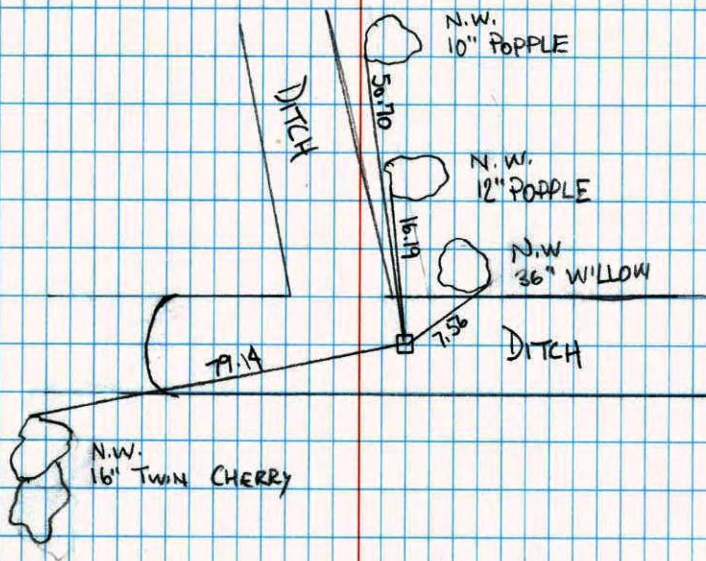


N.A.D.	1983	Co-ordinates
County	Project	Co-ordinates
Northing	<u>156234.0916</u>	
Easting	<u>521427.8752</u>	
State Plane Co-ordinates		
Y	_____	
X	_____	
Date	_____	

Revised date	Revised date	Revised date
1-15-74		
1-11-88		
8-8-90		
7-28-95		
11-16-99		



EAST 1/4 COR. SEC. 10, T. 31, R. 23  
 RETIED MONUMENT DURING BLAINE  
 C.P.S.



11-16-99

J. SIMMER

T. SCHWAB



NO. 446

NATIONAL PRINTFAST

EAST 1/4 CORNER SECTION 10 T31 R23  
 FOUND AND RETIED CONCRETE MONUMENT.

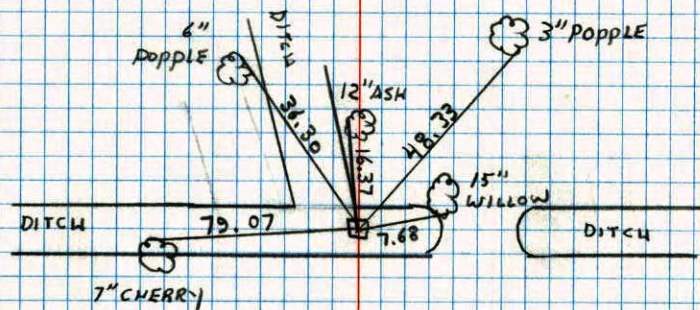
200' 24°

1-11-88

H. LARSON

B. GUETZKO

J. STEVENSON



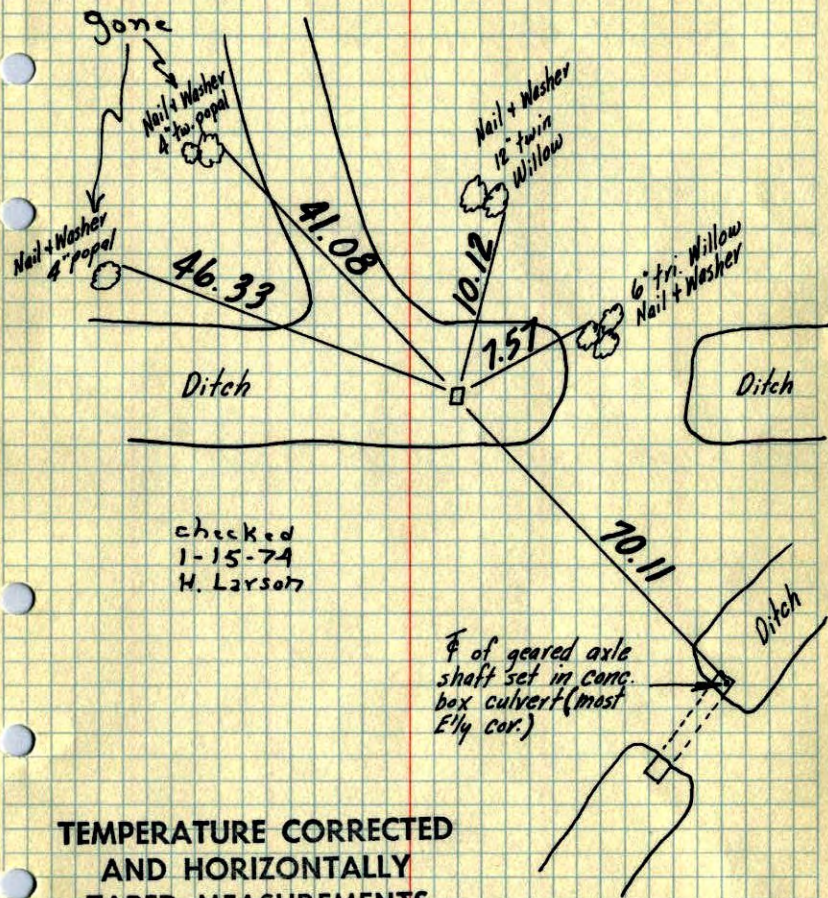
NO. 448

ATLANTIC

E 1/4 Cor. Sec. 10, T 31, R 23

4" Square Concrete Mon. up 0.5'

Check in winter only.



checked  
1-15-74  
H. Larson

⊕ of geared axle  
shaft set in conc.  
box culvert (most  
E 1/4 cor.)

TEMPERATURE CORRECTED  
AND HORIZONTALLY  
TAPED MEASUREMENTS

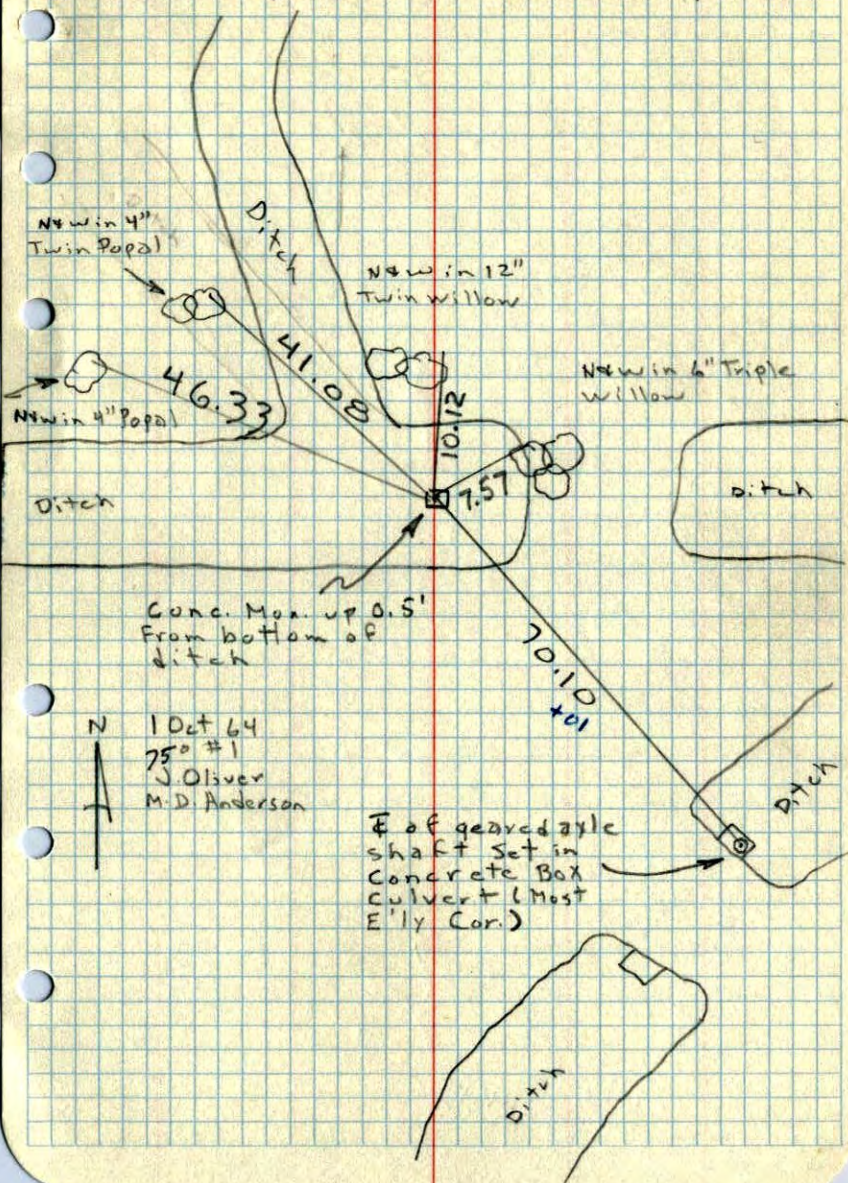
Wet 8/12/68  
DP

ROLAND W. ANDERSON J. Oliver  
COUNTY SURVEYOR M. D. Anderson  
ANOKA COUNTY, MINNESOTA

Oct. 1, 64

E 1/4 Cor. Sec. 10, T 31, R 23

Found 4" Sq. Concrete Monument up 0.5'



Conc. Mon. up 0.5'  
From bottom of  
ditch

N  
1 Oct 64  
75° #1  
J. Oliver  
M. D. Anderson

⊕ of geared axle  
shaft set in  
Concrete Box  
culvert (Most  
E 1/4 Cor.)