

# CERTIFICATE OF LOCATION OF GOVERNMENT CORNER

County of Anoka

State of Minnesota

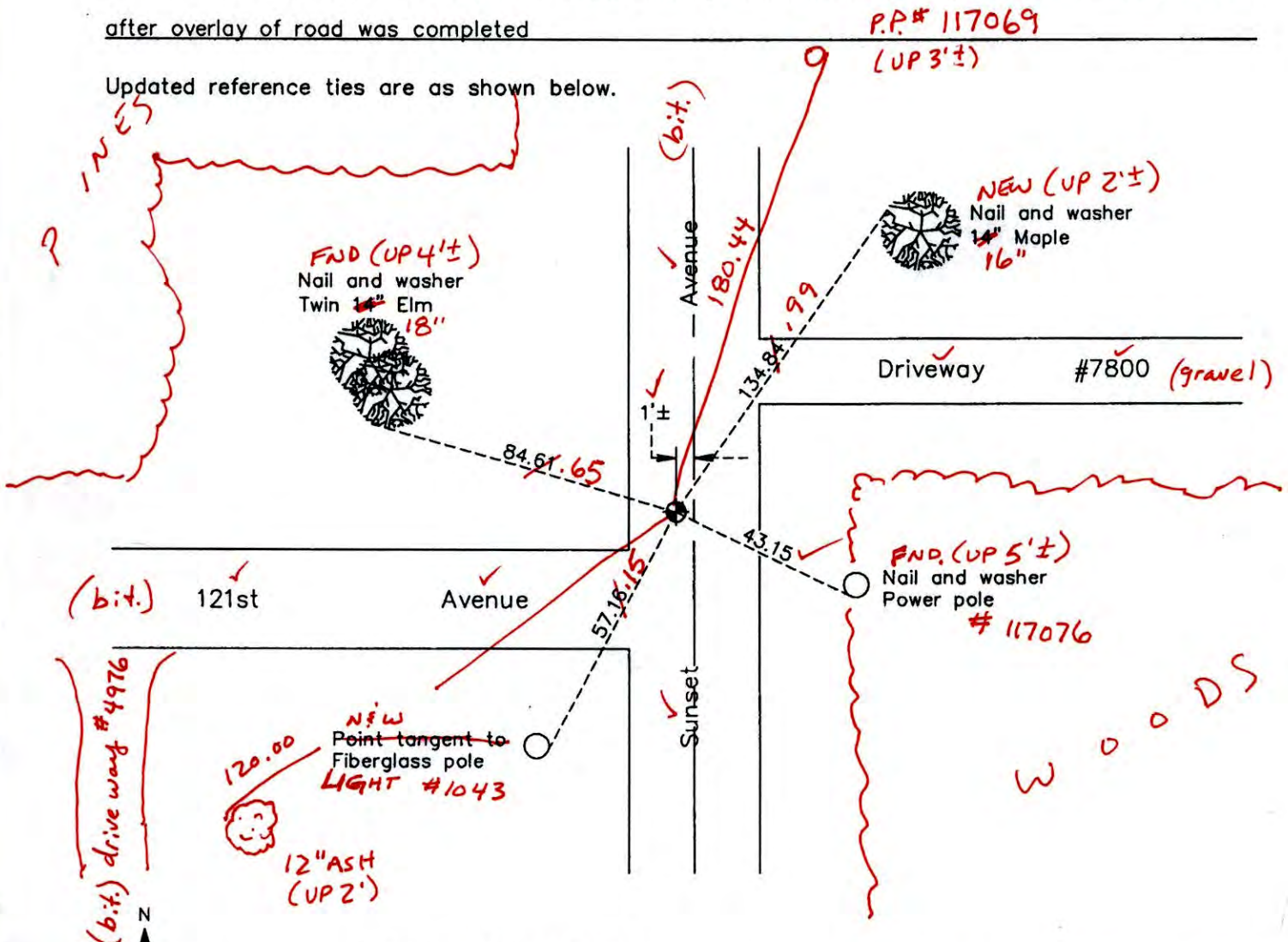
## East 1/4 Corner of Sec. 12 Township 31 Range 23

On the 31st day of August, 1960, the described corner was evidenced by a 2" iron pipe

and to perpetuate the location of said corner, at the exact location thereof, a permanent marker was placed consisting of a cast iron monument

AND on the 20th day of August, 2012, said permanent marker was raised to the surface after overlay of road was completed

Updated reference ties are as shown below.



5-16-14  
BK-55  
TOTAL STATION  
Revision Date  
12/17/12

N.A.D. 1983 Coordinates  
(1996 Adjustment)

County Project Coordinates	
Northing	156096.3268
Easting	531994.2847
Date	6/11/98

I hereby certify that this United States public land survey monument record is correct and complete to the best of my knowledge and belief.

*Larry D. Hoium* Date 12/17/12

Larry D. Hoium, Anoka County Surveyor  
Minnesota License Number 18165

VRS 3DQ=0.05      N=156096.2788    E=531994.2621

# CERTIFICATE OF LOCATION OF GOVERNMENT CORNER

County of Anoka

State of Minnesota

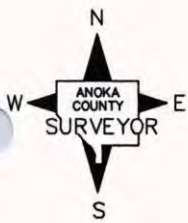
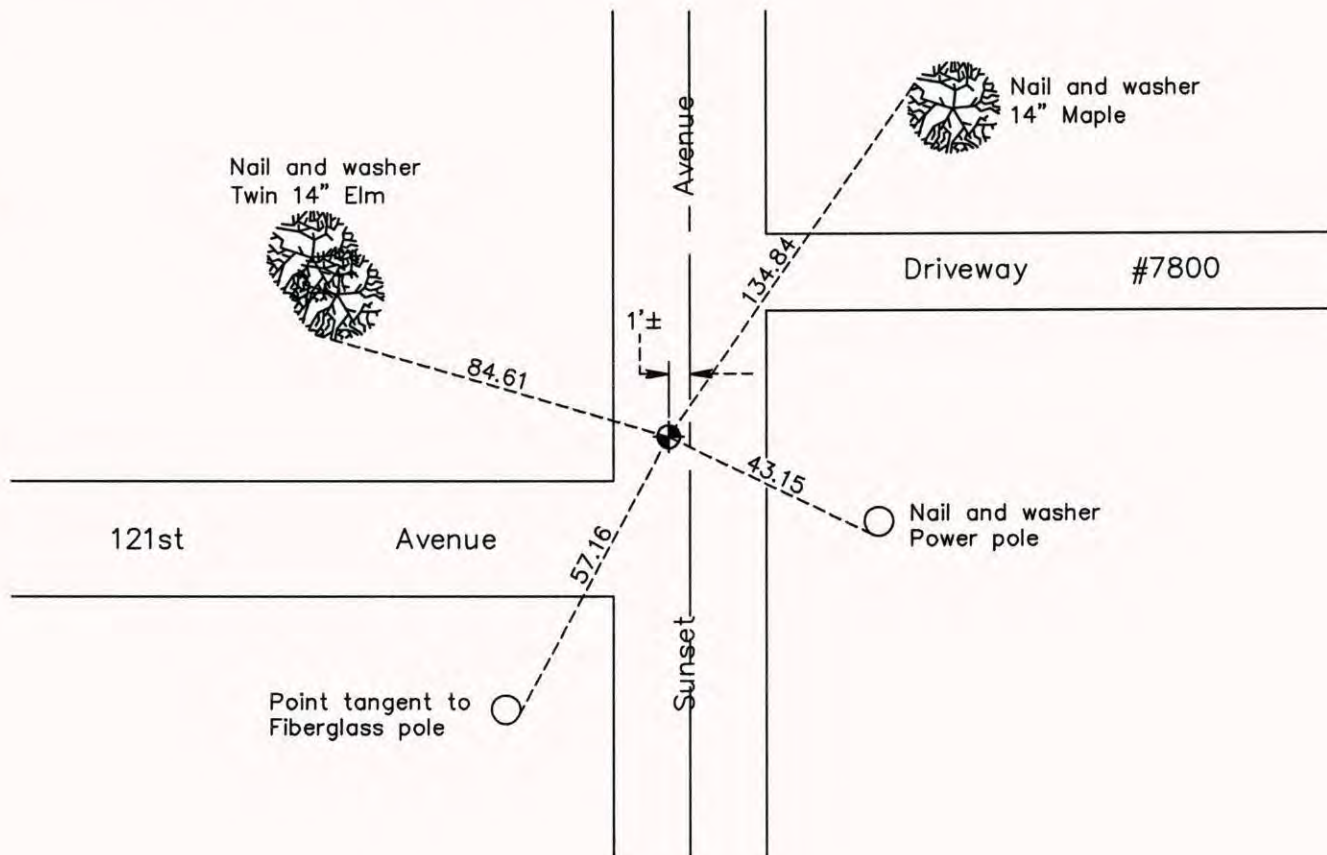
## East 1/4 Corner of Sec. 12 Township 31 Range 23

On the 31st day of August, 1960, the described corner was evidenced by a 2" iron pipe

and to perpetuate the location of said corner, at the exact location thereof, a permanent marker was placed consisting of a cast iron monument

AND on the 20th day of August, 2012, said permanent marker was raised to the surface after overlay of road was completed

Updated reference ties are as shown below.



Revision Date  
12/17/12

N.A.D. 1983 Coordinates  
(1996 Adjustment)

County Project Coordinates	
Northing	156096.3268
Easting	531994.2847
Date	6/11/98

I hereby certify that this United States public land survey monument record is correct and complete to the best of my knowledge and belief.

*Larry D. Hoium* Date 12/17/12

Larry D. Hoium, Anoka County Surveyor  
Minnesota License Number 18165

# CERTIFICATE OF LOCATION OF GOVERNMENT CORNER

County of Anoka                      State of Minnesota

East 1/4 Corner of Sec. 12 Township 31 Range 23

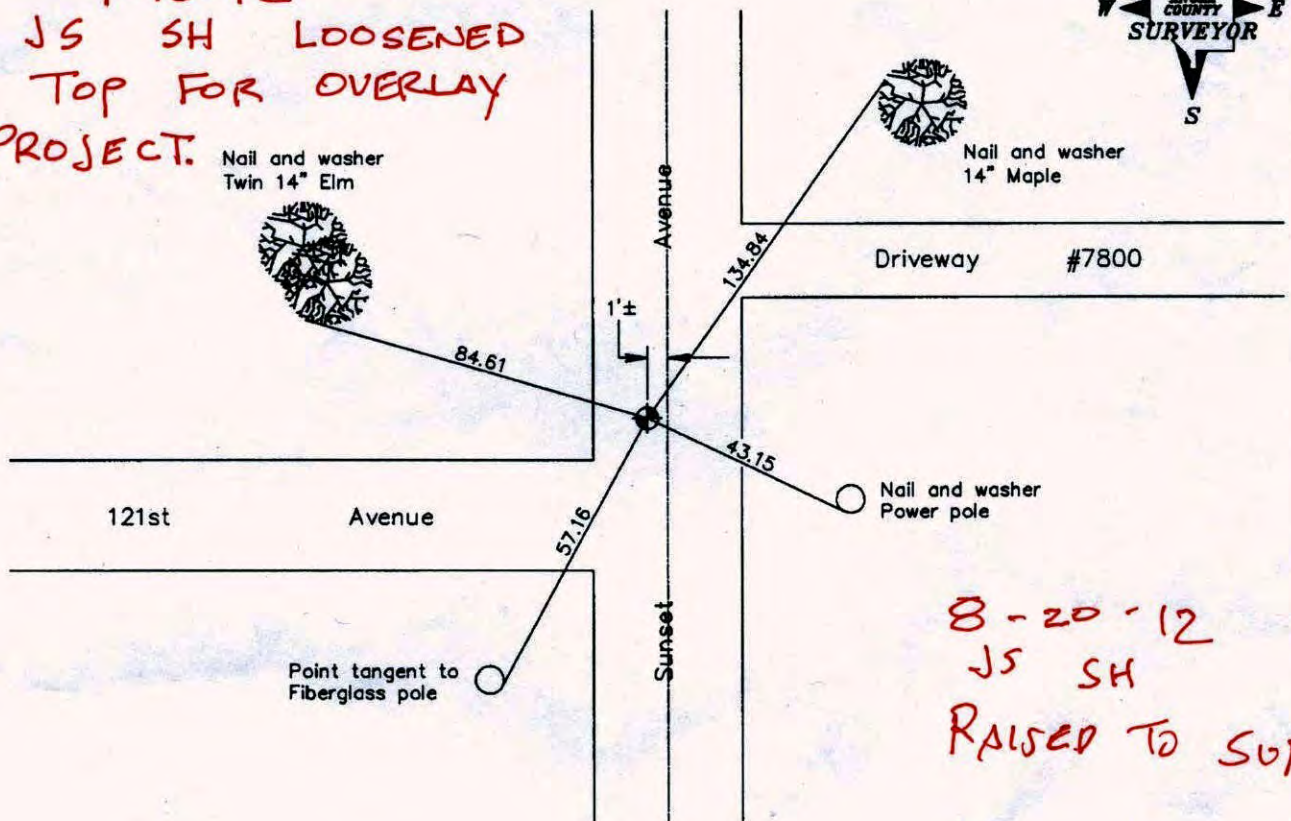
On the 31st day of August, 1960, the described corner was evidenced by a 2" iron pipe

and to perpetuate the location of said corner, at the exact location thereof, a permanent marker was placed consisting of a cast iron monument

AND on the 7th day of June, 2006, said permanent marker was found and the ties were updated

Updated reference ties are as shown below.

7-10-12  
JS SH LOOSENED  
TOP FOR OVERLAY  
PROJECT.



8-20-12  
JS SH  
RAISED TO SURFACE

Revised date
7/24/95
6/11/98
6/07/06

N.A.D. 1983 Coordinates (1996 Adjustment)	
County Project Coordinates	
Northing	156096.3268
Easting	531994.2847
Date	6/11/98

I hereby certify that this United States public land survey monument record is correct and complete to the best of my knowledge and belief.

*Larry D. Hoium*      Date 6/07/06

Larry D. Hoium, Anoka County Surveyor

Minnesota License Number 18165

# CERTIFICATE OF LOCATION OF GOVERNMENT CORNER

County of Anoka

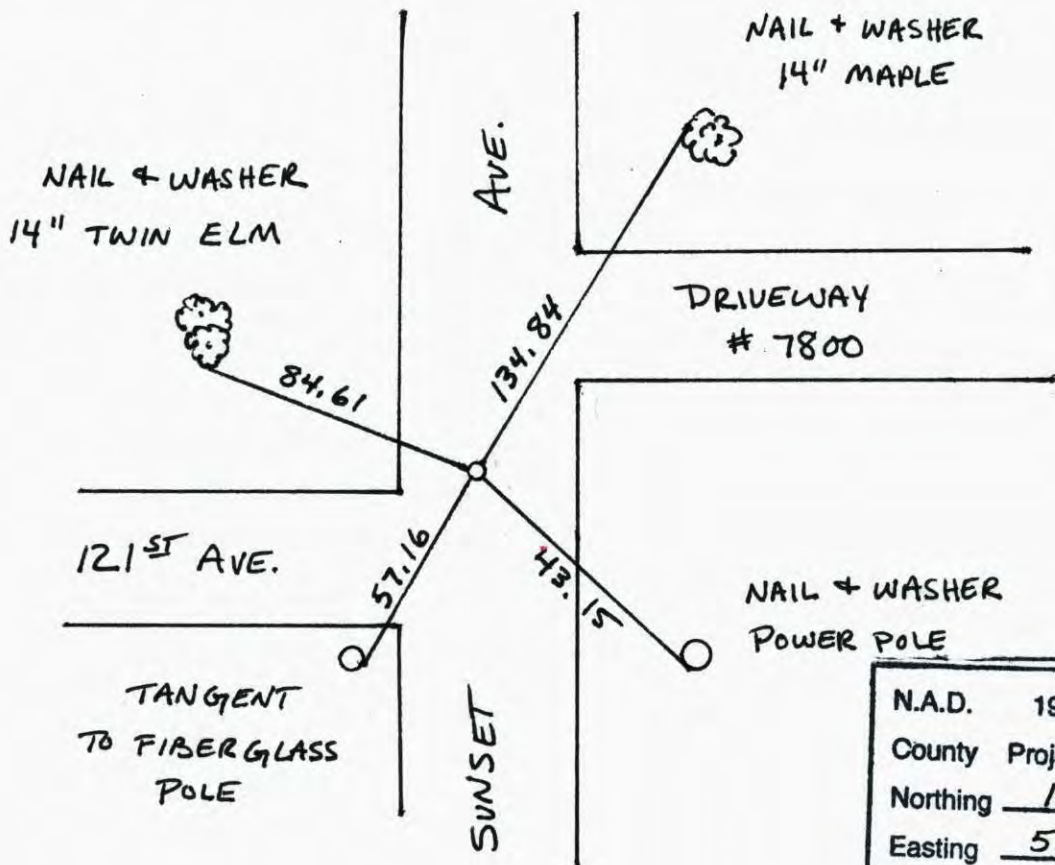
State of Minnesota

EAST 1/4 Corner of Sec. 12 Township 31 Range 23

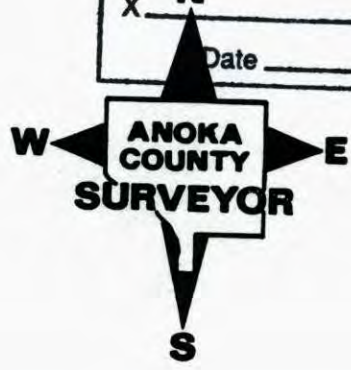
I hereby certify that on the 31 day of AUGUST, 1960, I found the described corner which was evidenced by 2" IRON PIPE

and I further certify that to perpetuate the location of said corner, I did, at the exact location thereof, place a permanent marker consisting of CAST IRON MONUMENT 1' ± WEST OF CENTERLINE

which reference or witness monuments are located in the manner following:



N.A.D.	1983	Co-ordinates
County	Project	Co-ordinates
Northing	<u>156096.3268</u>	
Easting	<u>531994.2847</u>	
State Plane Co-ordinates		
Y	_____	
X	_____	
Date	_____	



Revised date	Revised date	Revised date
<u>6-19-90</u>		
<u>7-24-95</u>		
<u>6-11-98</u>		
<u>6-7-06</u>		

# CERTIFICATE OF LOCATION OF GOVERNMENT CORNER

County of Anoka

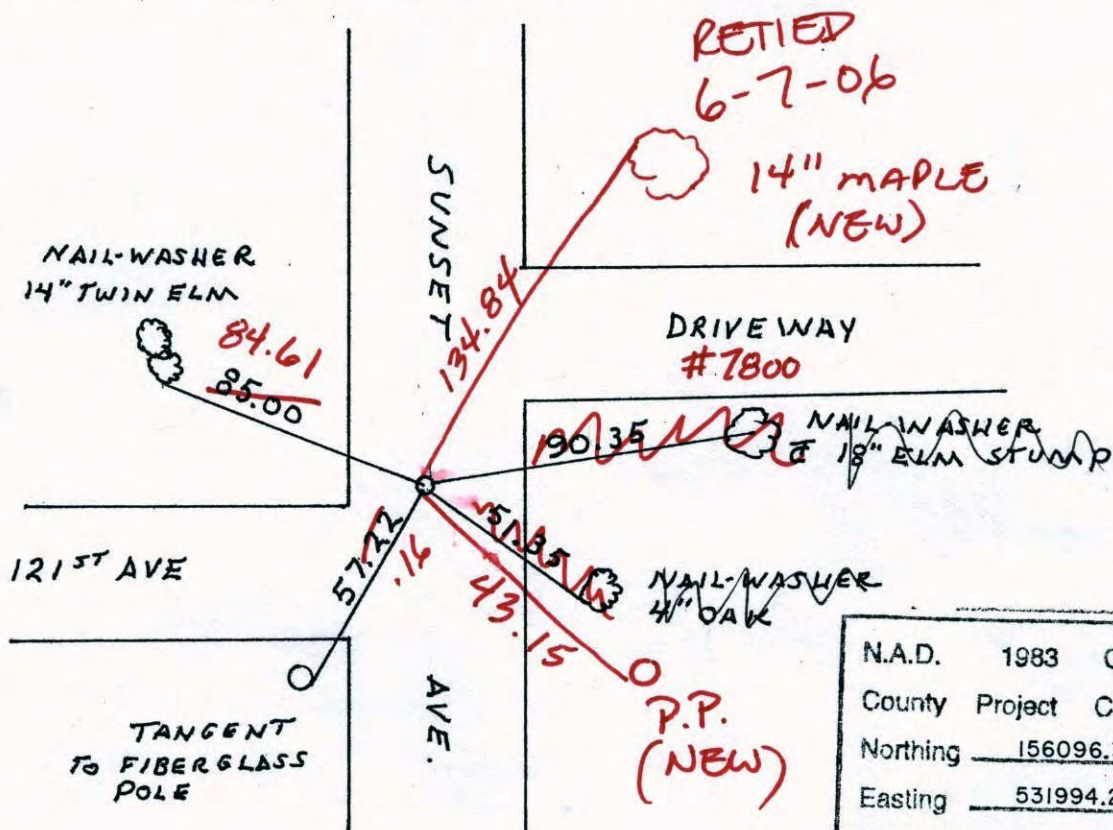
State of Minnesota

EAST 1/4 Corner of Sec. 12 Township 31 Range 23

I hereby certify that on the 31 day of AUGUST, 1960, I found the described corner which was evidenced by 2" IRON PIPE

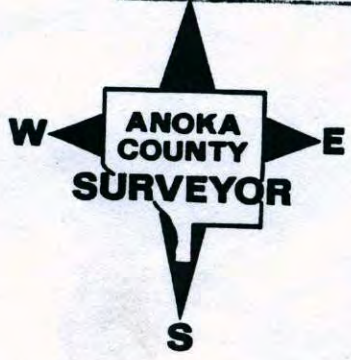
and I further certify that to perpetuate the location of said corner, I did, at the exact location thereof, place a permanent marker consisting of CAST IRON MONUMENT 1' WEST OF CENTERLINE

which reference or witness monuments are located in the manner following:



N.A.D.	1983	Co-ordinates
County	Project	Co-ordinates
Northing	156096.3268	
Easting	531994.2847	
State Plane Co-ordinates		
Y	_____	
X	_____	
N	Date _____	

Revised date	Revised date	Revised date
6-19-90		
7-24-90		
6-11-98		



# CERTIFICATE OF LOCATION OF GOVERNMENT CORNER

County of Anoka

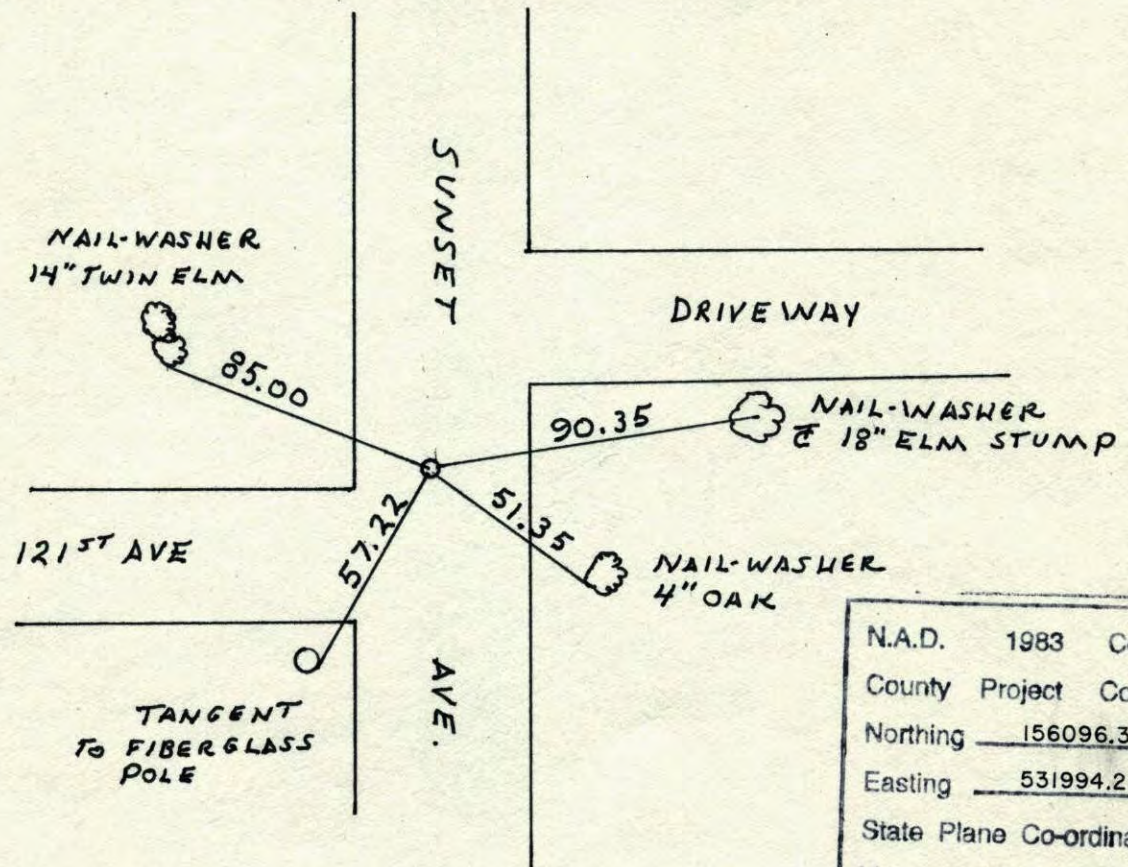
State of Minnesota

EAST 1/4 Corner of Sec. 12 Township 31 Range 23

I hereby certify that on the 31 day of AUGUST, 19 60, I found the described corner which was evidenced by 2" IRON PIPE

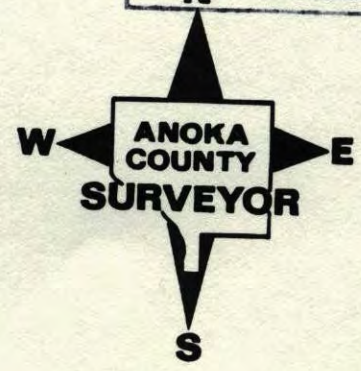
and I further certify that to perpetuate the location of said corner, I did, at the exact location thereof, place a permanent marker consisting of CAST IRON MONUMENT 1' WEST OF CENTERLINE

which reference or witness monuments are located in the manner following:

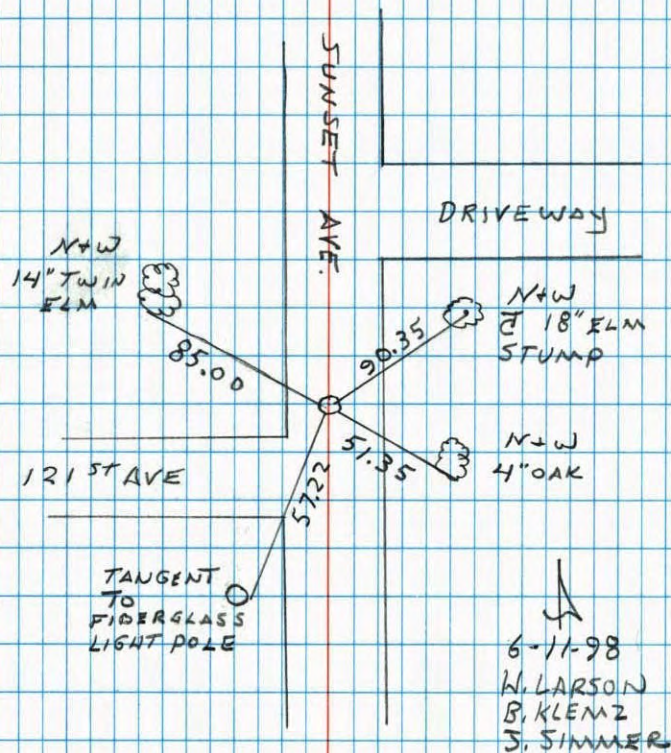


N.A.D.	1983	Co-ordinates
County	Project	Co-ordinates
Northing	<u>156096.3268</u>	
Easting	<u>531994.2847</u>	
State Plane Co-ordinates		
Y	_____	
X	_____	
N	Date	_____

Revised date	Revised date	Revised date
<u>6-19-90</u>		
<u>7-24-95</u>		
<u>6-11-98</u>		



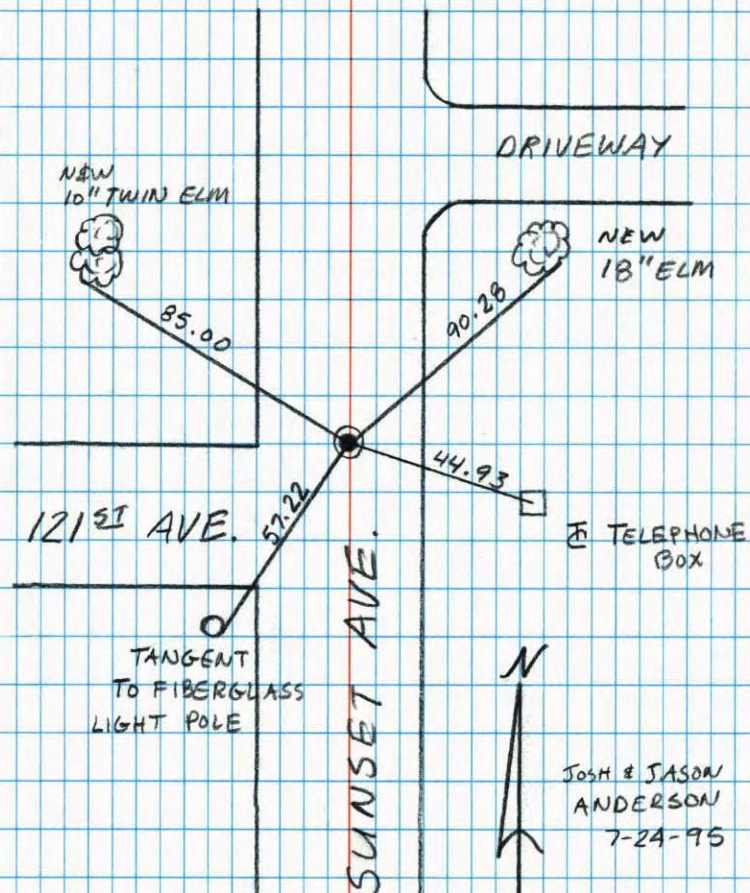
E 1/4 COR SECTION 12 T31 R23  
 RETIE CAST IRON MONUMENT  
 C.I. 1' WEST OF E



NO. 446

NATIONAL PRINTFAST

EAST 1/4 SEC. 12 TW. 31 R. 23  
 RETIE CAST IRON MON.

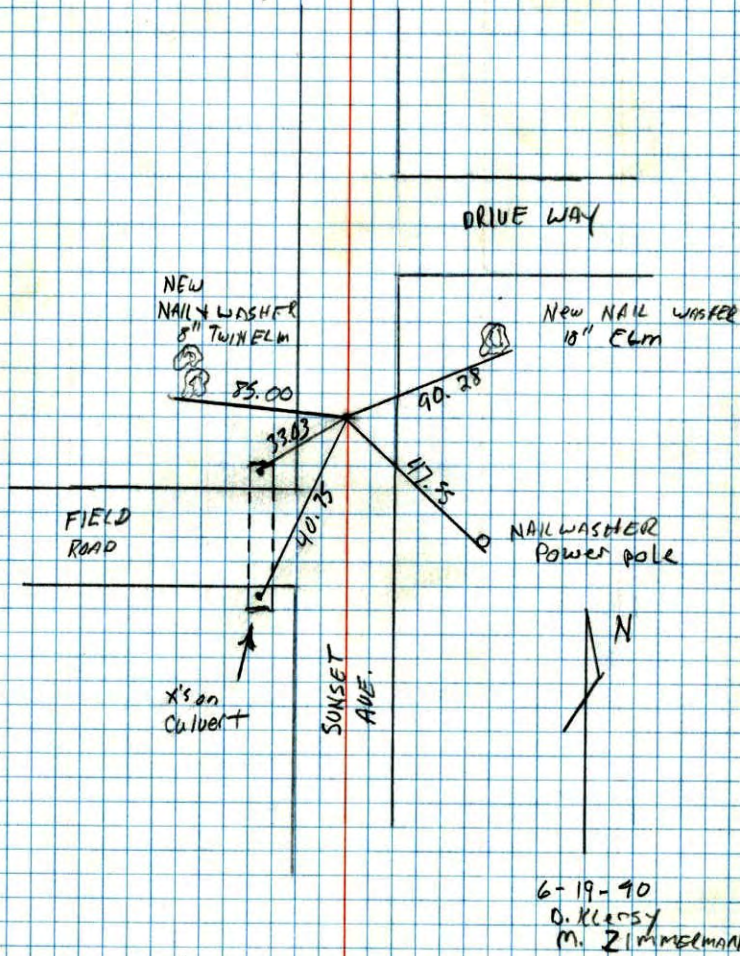


NO. 446

NATIONAL PRINTFAST

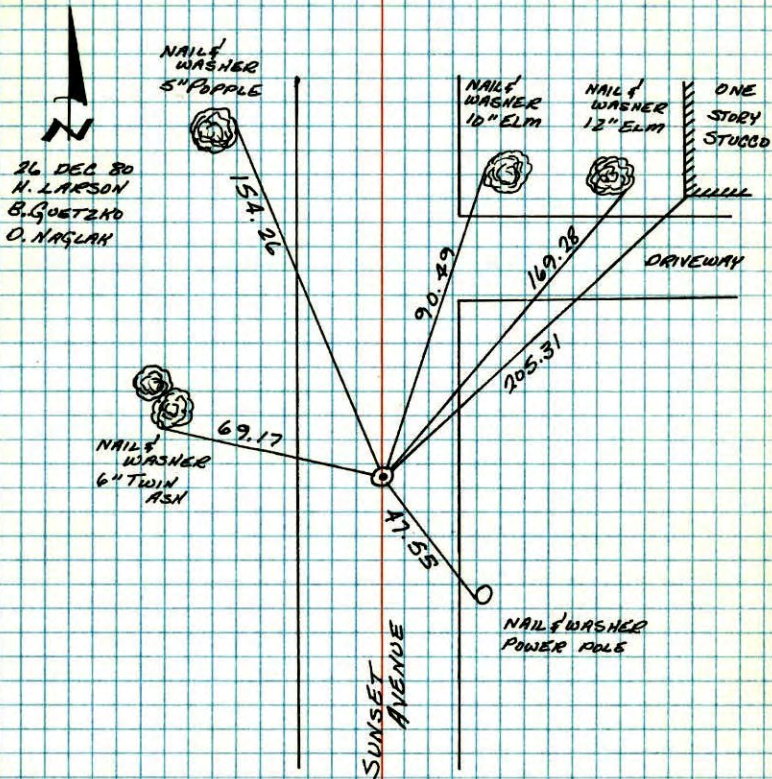
EAST 1/4 CORNER OF SEC. 12 T31 R23

Retied Cast Iron Monument



E 1/4 CORNER SECTION 12-T31-R23

CHECKED AND RETIED CAST IRON MONUMENT SET BY BILL ROGERS IN 1960.



TEMPERATURE CORRECTED  
AND HORIZONTALLY  
TAPED MEASUREMENTS

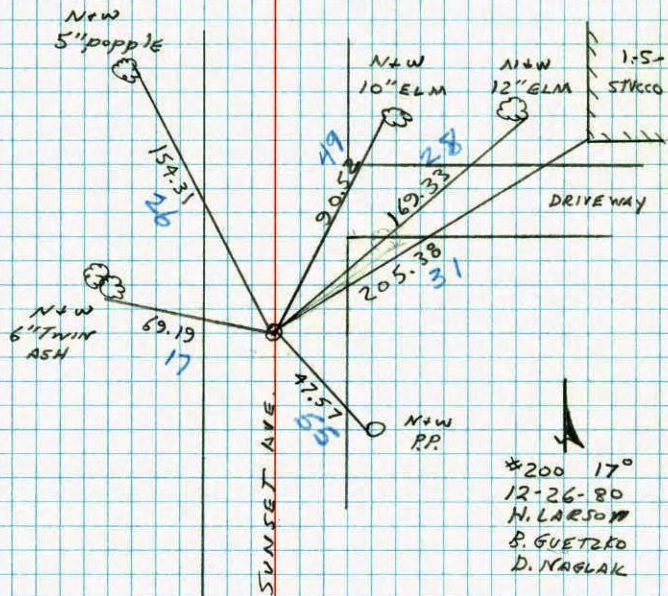
ROLAND W. ANDERSON  
COUNTY SURVEYOR  
ANOKA COUNTY, MINNESOTA



E 1/4 CORNER SECTION 12 T31 R23

CHECKED AND RETIED LAST IRON

SET BY B. RODGERS IN 1960



E 1/4 Cor. Sec 12-T31-R23

2" iron pipe (mushroomed) down 2' ±  
 placed cast iron monument flush.

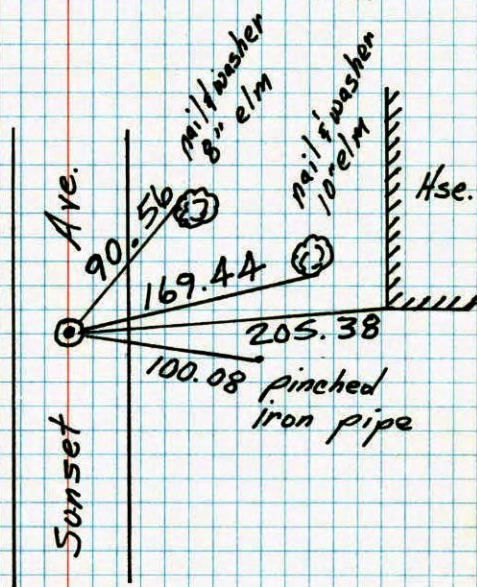
8/31/60

Bill Rodgers  
 D. Potter



Tie Check  
 5-13-75  
 D. Dahl  
 J. Beutcher

TIE CHECK  
 11-AUG 77  
 R. SAHNEROD  
 S. BRIEN



TEMPERATURE CORRECTED  
 AND HORIZONTALLY  
 TAPED MEASUREMENTS  
 ROLAND W. ANDERSON  
 COUNTY SURVEYOR  
 ANOKA COUNTY, MINNESOTA

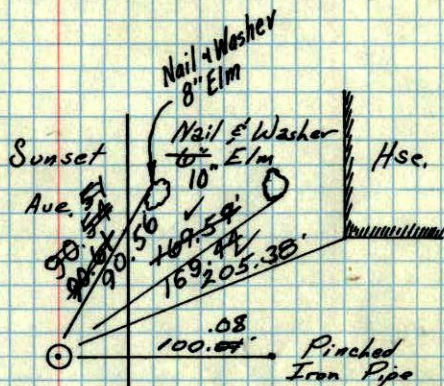
E 1/4 Cor. Sec 12-T31-R23

2" Iron Pipe (Mushroomed) down 2'  
Placed Cast Iron Flash

Tie Check  
July 18, 1968  
D. Powell  
P. Pich  
R. Olson

Tie Check  
Aug. 31, 1971  
B. Olson  
J. Boettcher

Tie Check  
May 13, 1975  
D. Dahl  
J. Boettcher



Temp. 90°  
8/31/60

Bill Rogers  
Dennis Potter  
Dick Giddings  
Randy Carlson  
Ralph Robinson

Retie 6/9/64

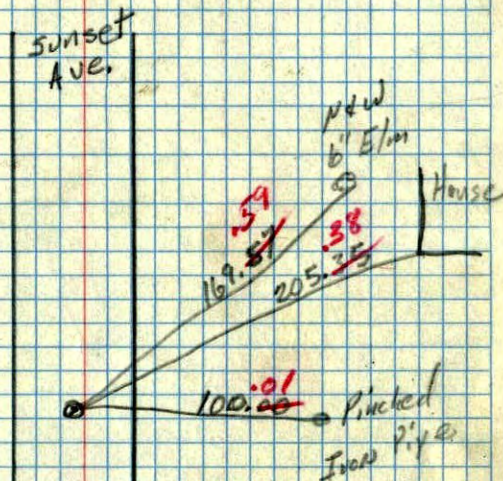
M. D. Anderson  
R. Carlson

TEMPERATURE CORRECTED  
AND HORIZONTALLY  
TAPED MEASUREMENTS

ROLAND W. ANDERSON  
COUNTY SURVEYOR  
ANOKA COUNTY, MINNESOTA

E 1/4 Cor. Sec. 12 + 31 R23

2" Iron Pipe (Mushroomed) down  
2' Placed Cast Iron flash

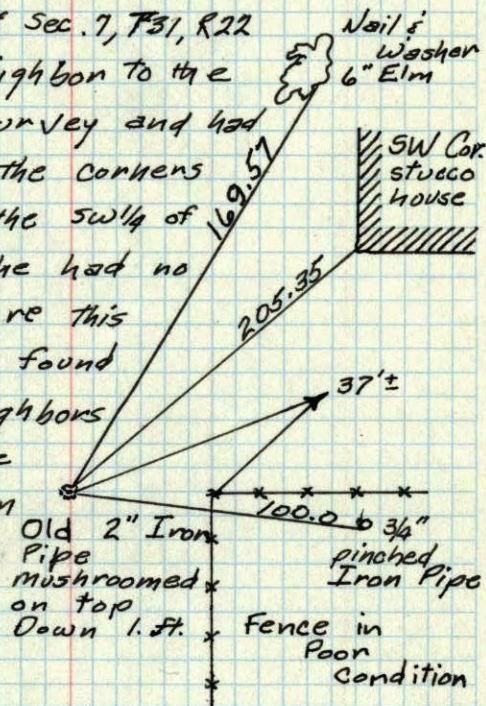


8/31/60

TC  
Temp. 90°  
8/31/60  
Bill Rogers  
Dennis Potter  
Dick Giddings  
Randy Carlson  
Ralph Robinson

E 1/4 Cor. sec. 12, T31, R23

Mr. Goldbeck, who owns the SW 1/4 of the NW 1/4 of Sec. 7, T31, R22 stated that his neighbor to the south had a survey and had irons placed on the corners of the N 1/2 of the SW 1/4 of Sec. 7, and that he had no knowledge of where this iron was that we found and that his neighbors survey was made before 1946 when Mr. Goldbeck bought his property.



9/17/59

ROLAND W. ANDERSON  
COUNTY SURVEYOR  
ANOKA COUNTY, MINNESOTA

Bill Rogers  
Assisting