

CERTIFICATE OF LOCATION OF GOVERNMENT CORNER

County of Anoka

State of Minnesota

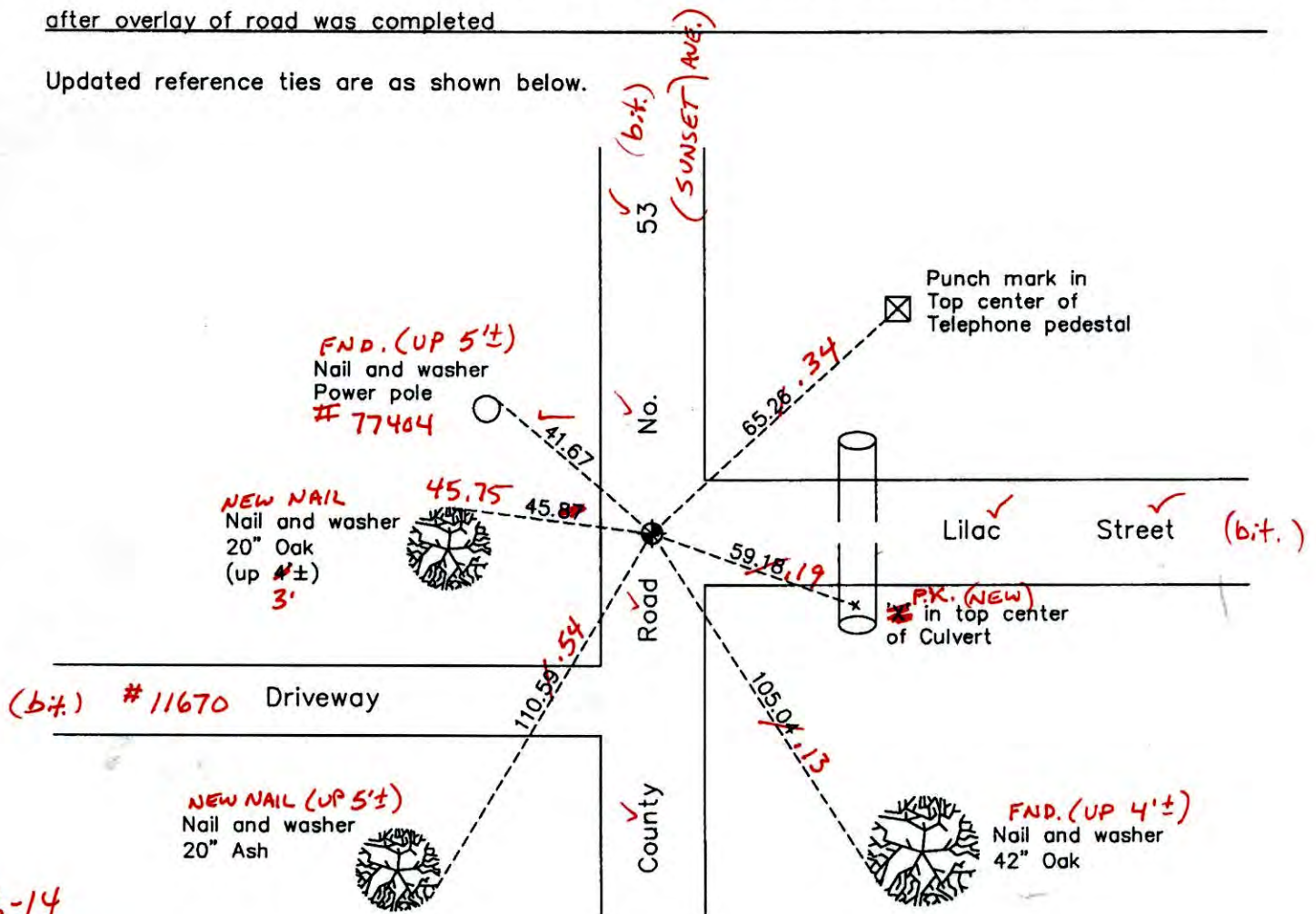
Southeast Corner of Sec. 12 Township 31 Range 23

On the 9th day of September, 1963, the described corner was evidenced by a granite monument

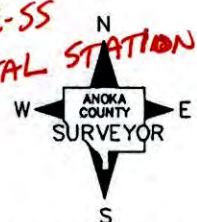
and to perpetuate the location of said corner, at the exact location thereof, a permanent marker was placed consisting of a cast iron monument (MON. 1'± E. OF E)

AND on the 17th day of August, 2012, said permanent marker was raised to the surface after overlay of road was completed

Updated reference ties are as shown below.



5-16-14
BK-55
TOTAL STATION



Revision Date
12/17/12

N.A.D. 1983 Coordinates
(1996 Adjustment)

County Project Coordinates	
Northing	153440.6051
Easting	531991.9985
Date	6/11/98

I hereby certify that this United States public land survey monument record is correct and complete to the best of my knowledge and belief.

Larry D. Hoium Date 12/17/12

Larry D. Hoium, Anoka County Surveyor
Minnesota License Number 18165

VRS 3DQ = 0.05 N = 153440.5902 E = 531992.0139

CERTIFICATE OF LOCATION OF GOVERNMENT CORNER

County of Anoka

State of Minnesota

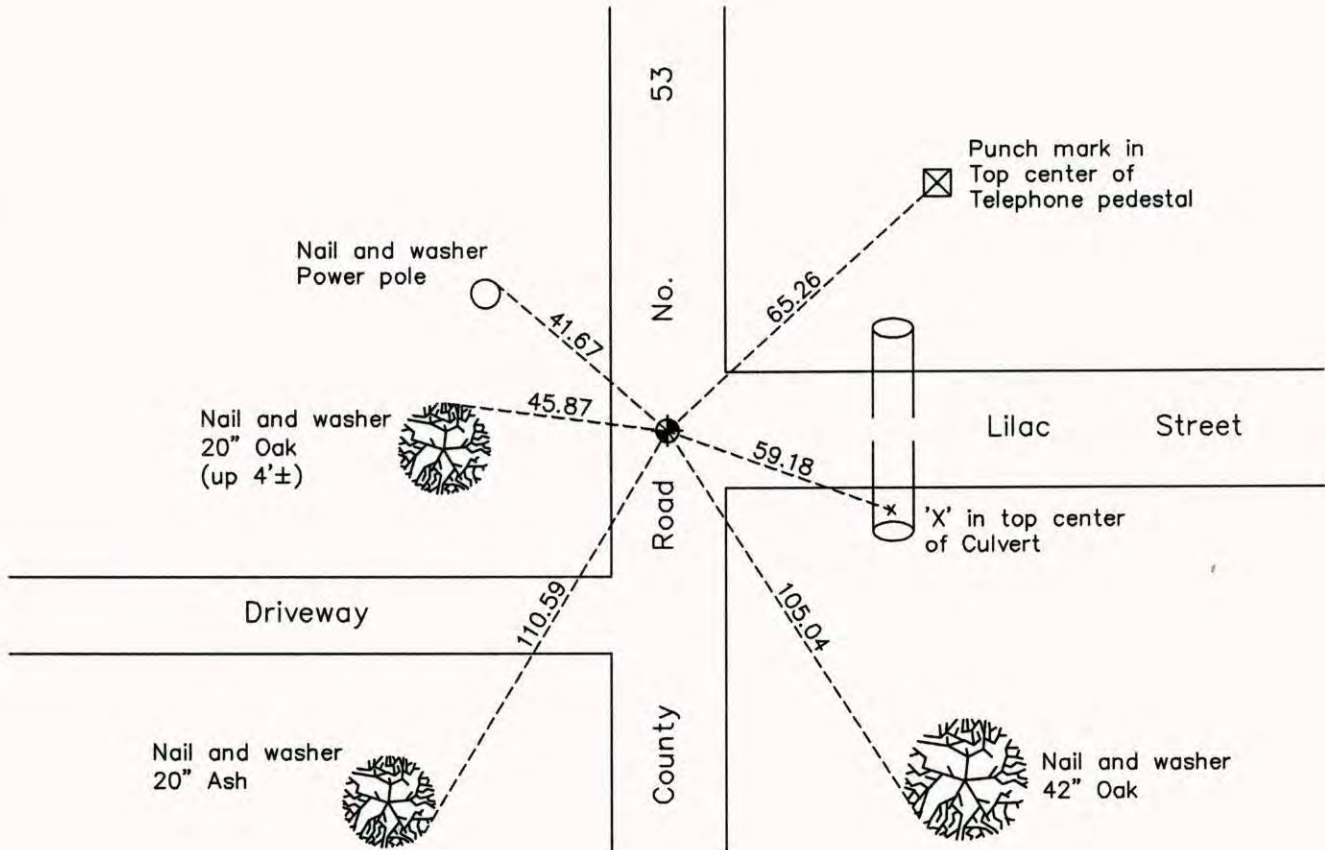
Southeast Corner of Sec. 12 Township 31 Range 23

On the 9th day of September, 1963, the described corner was evidenced by a granite monument

and to perpetuate the location of said corner, at the exact location thereof, a permanent marker was placed consisting of a cast iron monument

AND on the 17th day of August, 2012, said permanent marker was raised to the surface after overlay of road was completed

Updated reference ties are as shown below.



Revision Date

12/17/12

N.A.D. 1983 Coordinates
(1996 Adjustment)

County Project Coordinates	
Northing	153440.6051
Easting	531991.9985
Date	6/11/98

I hereby certify that this United States public land survey monument record is correct and complete to the best of my knowledge and belief.

Larry D. Hoium Date 12/17/12

Larry D. Hoium, Anoka County Surveyor

Minnesota License Number 18165

CERTIFICATE OF LOCATION OF GOVERNMENT CORNER

County of Anoka State of Minnesota

Southeast Corner of Sec. 12 Township 31 Range 23

On the 9th day of September, 1963, the described corner was evidenced by a granite monument

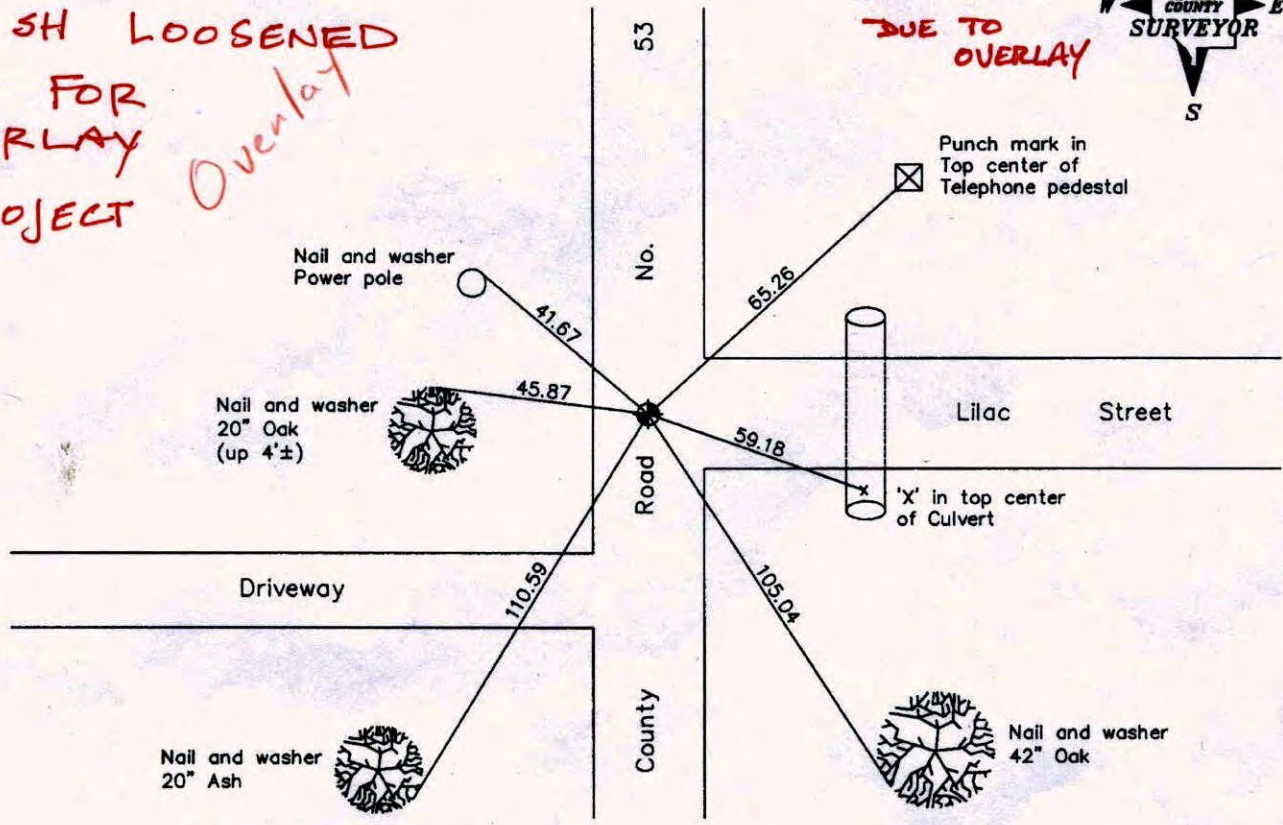
and to perpetuate the location of said corner, at the exact location thereof, a permanent marker was placed consisting of a cast iron monument

AND on the 7th day of June, 2006, said permanent marker was found and the ties were updated

Updated reference ties are as shown below.

7-10-12
JS SH LOOSENED
TOP FOR
OVERLAY
PROJECT

SH JB
8/17/12
RAISED MON.
DUE TO
OVERLAY



Revised date
7/24/95
6/11/98
6/07/06

N.A.D. 1983 Coordinates (1996 Adjustment)	
County Project Coordinates	
Northing	153440.6051
Easting	531991.9985
Date	6/11/98

I hereby certify that this United States public land survey monument record is correct and complete to the best of my knowledge and belief.

Larry D. Hoium Date 6/07/06

Larry D. Hoium, Anoka County Surveyor

Minnesota License Number 18165

CERTIFICATE OF LOCATION OF GOVERNMENT CORNER

County of Anoka

State of Minnesota

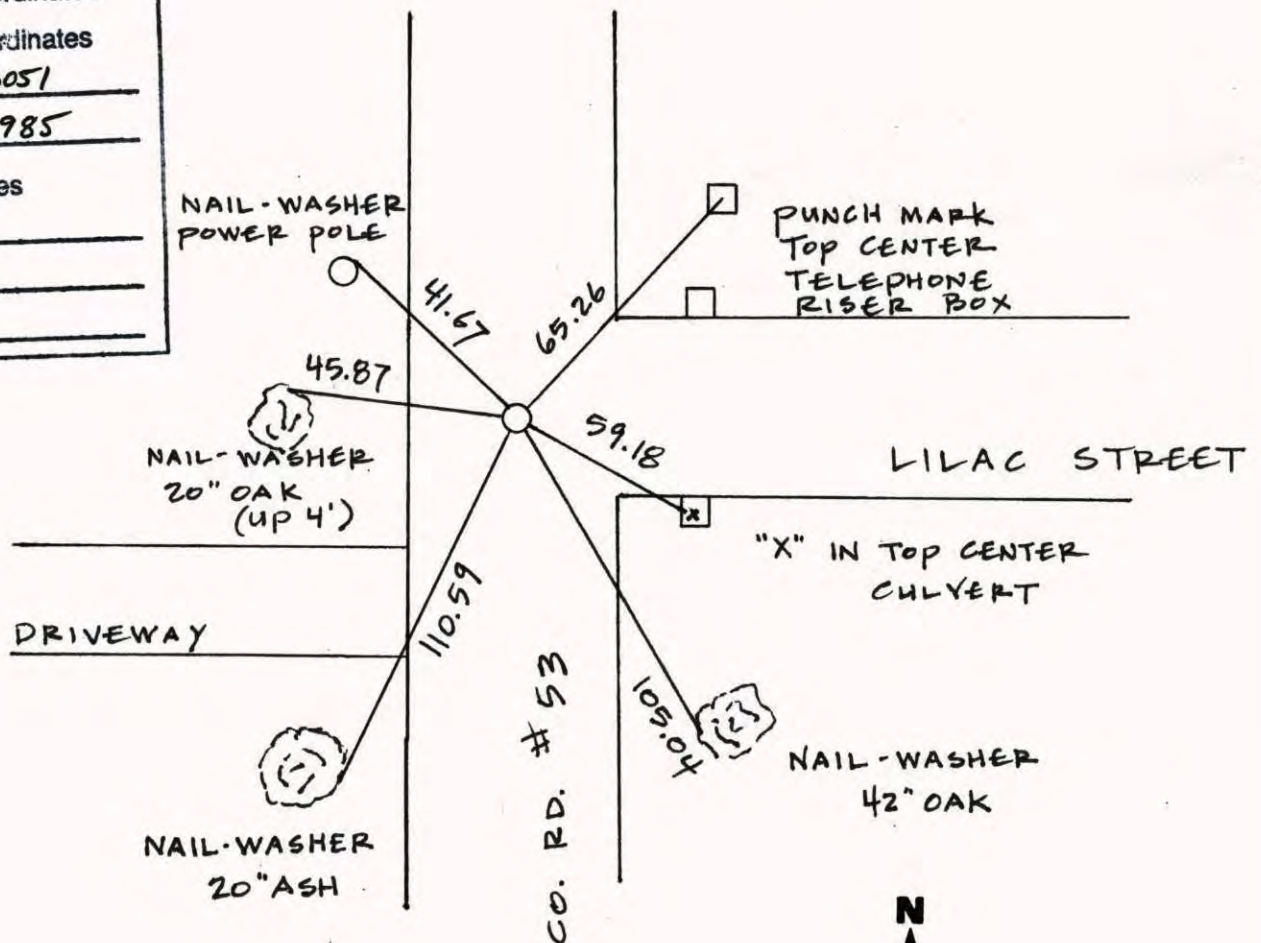
SOUTHEAST Corner of Sec. 12 Township 31 Range 23

I hereby certify that on the 9TH day of SEPTEMBER, 19 63, I found the described corner which was evidenced by GRANITE MONUMENT

and I further certify that to perpetuate the location of said corner, I did, at the exact location thereof, place a permanent marker consisting of CAST IRON MONUMENT

which reference or witness monuments are located in the manner following:

N.A.D.	1983	Co-ordinates
County	Project	Co-ordinates
Northing	<u>153440.6051</u>	
Easting	<u>531991.7985</u>	
State Plane Co-ordinates		
Y	_____	
X	_____	
Date	_____	



Revised date	Revised date	Revised date
<u>6-3-86</u>		
<u>6-19-90</u>		
<u>7-24-95</u>		
<u>6-11-98</u>		
<u>6-7-06</u>		



CERTIFICATE OF LOCATION OF GOVERNMENT CORNER

County of Anoka

State of Minnesota

SOUTHEAST Corner of Sec. 12 Township 31 Range 23

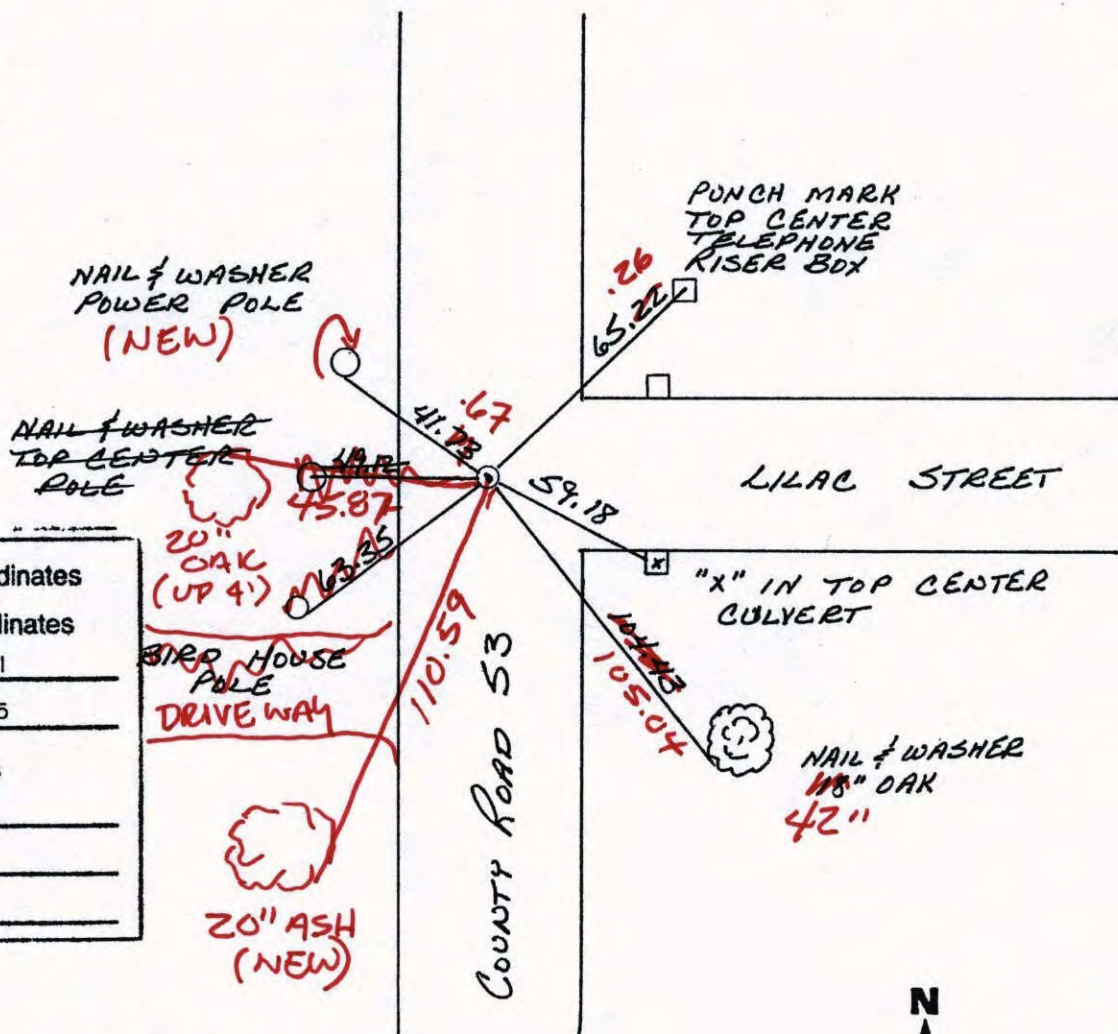
I hereby certify that on the 9 day of SEPTEMBER, 1963, I found the described corner which was evidenced by A GRANITE MONUMENT

and I further certify that to perpetuate the location of said corner, I did, at the exact location thereof, place a permanent marker consisting of CAST IRON MONUMENT

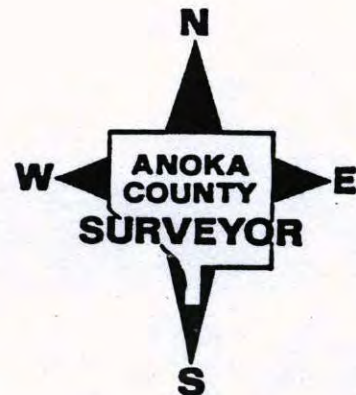
which reference or witness monuments are located in the manner following:

REGISTERED
6-7-06

N.A.D.	1983	Co-ordinates
County	Project	Co-ordinates
Northing	<u>153440.6051</u>	
Easting	<u>531991.9985</u>	
State Plane Co-ordinates		
Y	_____	
X	_____	
Date	_____	



Revised date	Revised date	Revised date
6-3-86		
6-19-90		
7-24-95		
6-11-98		



CERTIFICATE OF LOCATION OF GOVERNMENT CORNER

County of Anoka

State of Minnesota

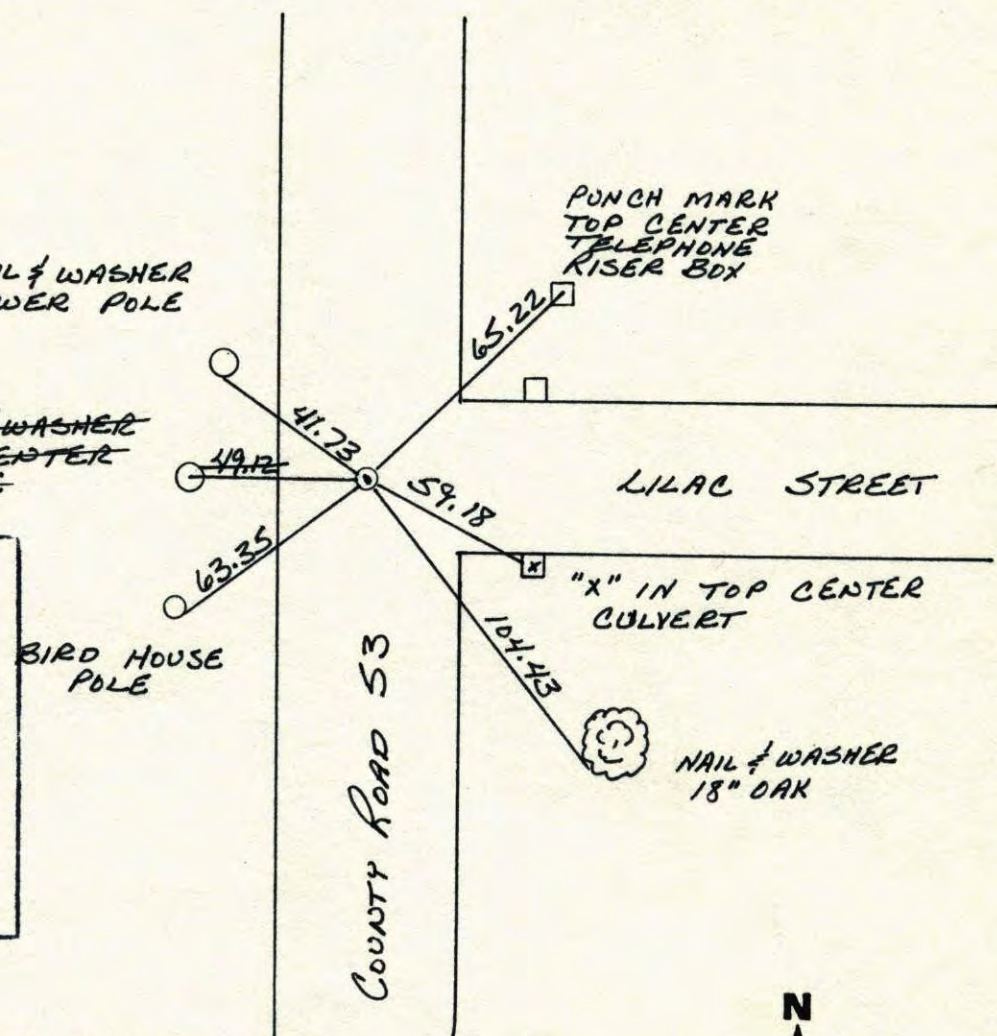
SOUTHEAST Corner of Sec. 12 Township 31 Range 23

I hereby certify that on the 9 day of SEPTEMBER, 1963, I found the described corner which was evidenced by A GRANITE MONUMENT

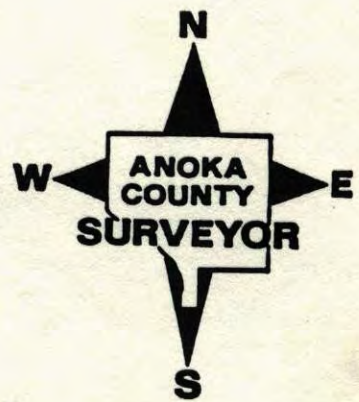
and I further certify that to perpetuate the location of said corner, I did, at the exact location thereof, place a permanent marker consisting of CAST IRON MONUMENT

which reference or witness monuments are located in the manner following:

N.A.D.	1983	Co-ordinates
County	Project	Co-ordinates
Northing	<u>153440.6051</u>	
Easting	<u>531991.9985</u>	
State Plane Co-ordinates		
Y	_____	
X	_____	
Date	_____	

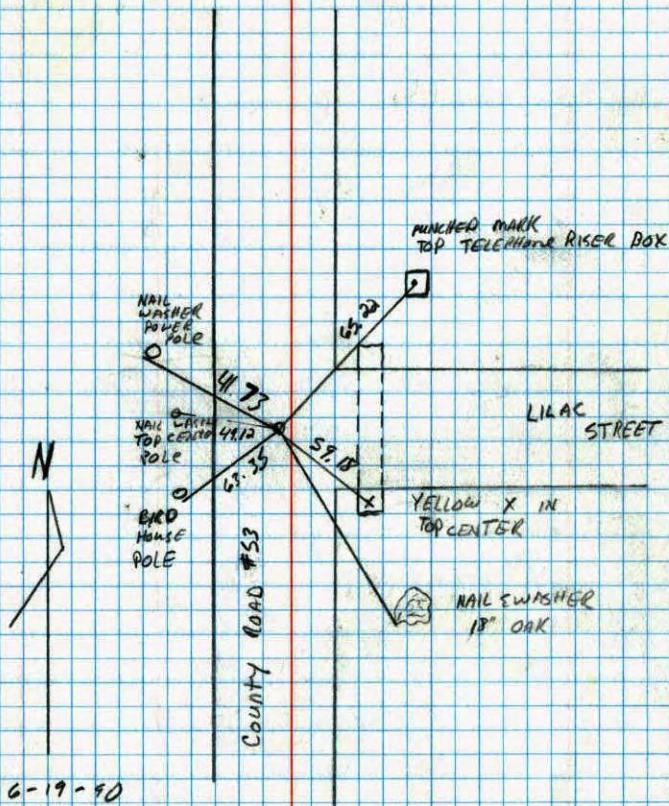


Revised date	Revised date	Revised date
<u>6-3-86</u>		
<u>6-19-90</u>		
<u>7-24-95</u>		
<u>6-11-98</u>		



South EAST corner sec 12 T 31 R 23

Retied cast iron monument



6-19-90
D. KLERS/
M. ZIMMERMAN

Southeast

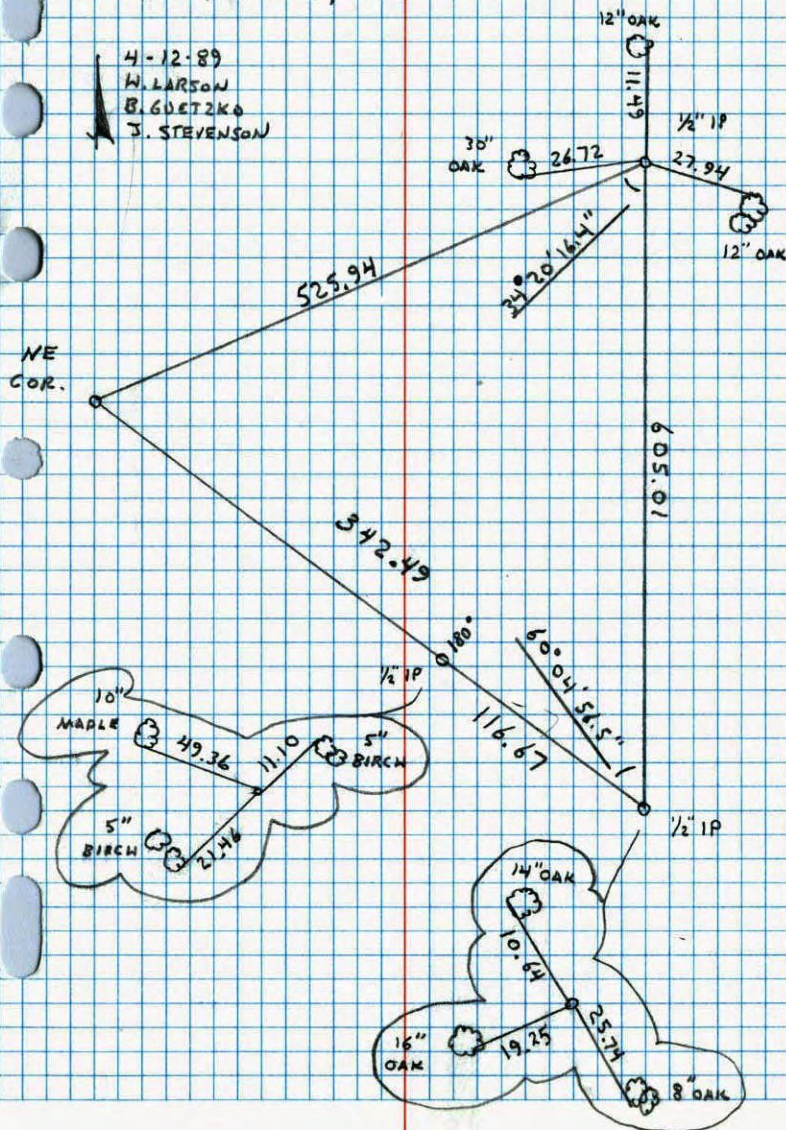
12

NORTHEAST COR. SECTION 12 T 32 R 24

RETIED + REMOVED FOR ROAD CONSTRUCTION.

SIGN AND POSTS BY I.P.s.

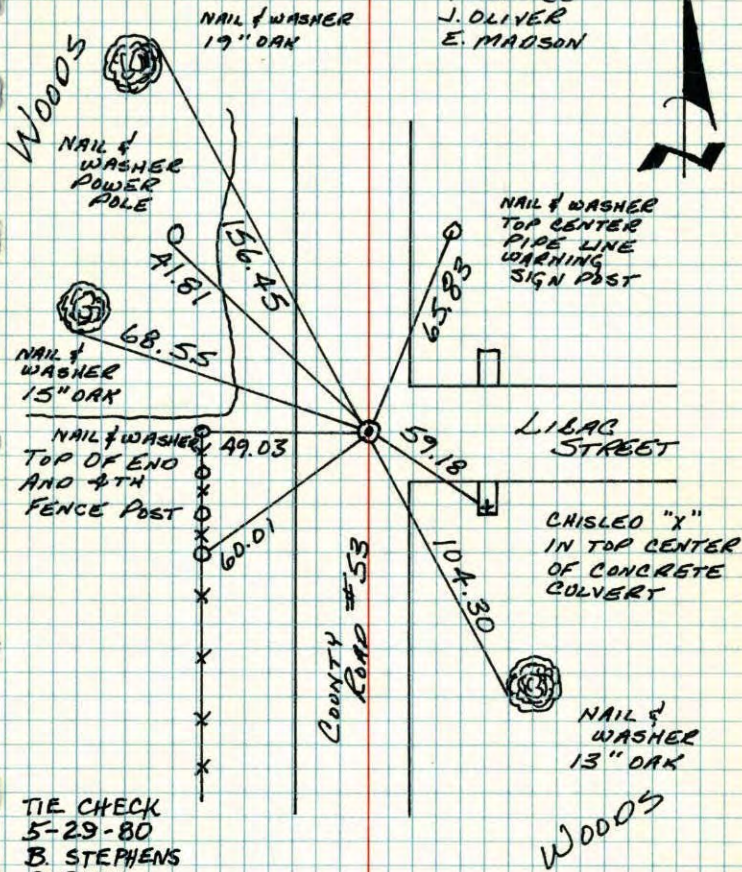
4-12-89
H. LARSON
B. GUETZKO
J. STEVENSON



S.E. CORNER SECTION 12-T31-R23

SET CAST IRON MONUMENT AT LOCATION OF FOUND GRANITE MONUMENT. PN'S 2.00' NORTH AND EAST. CAST IRON IS 2'± EAST OF CENTERLINE.

9 SEP 63
J. OLIVER
E. MADSON



TIE CHECK
5-29-80
B. STEPHENS
P. ROSS
P. HORNBY

TEMPERATURE CORRECTED AND HORIZONTALLY TAPED MEASUREMENTS
ROLAND W. ANDERSON
COUNTY SURVEYOR
ANOKA COUNTY, MINNESOTA

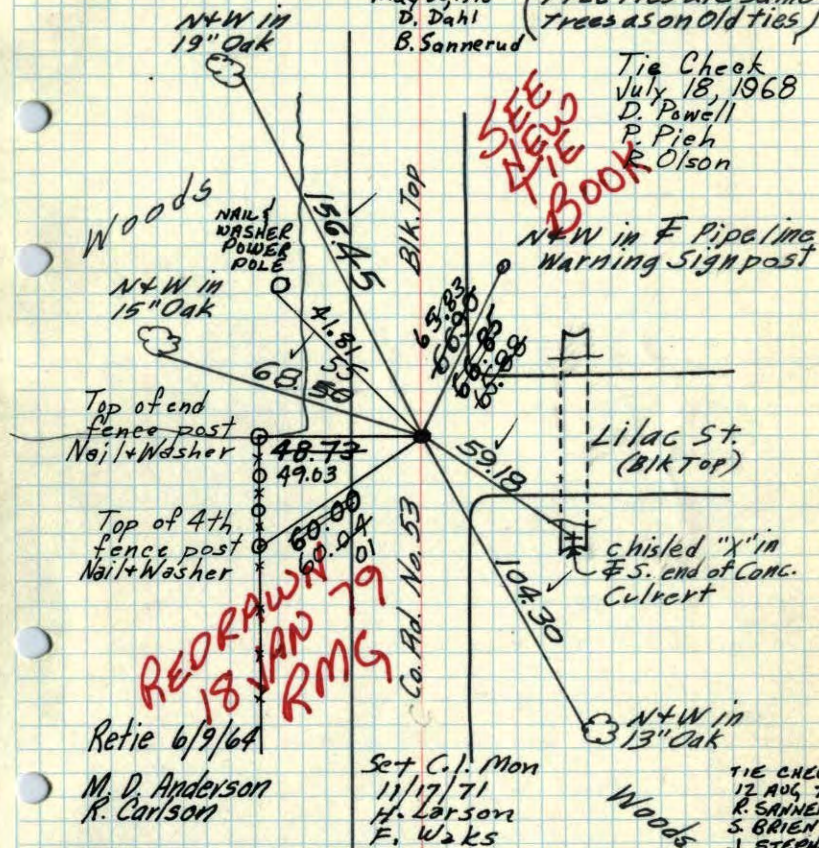
S.E. Cor. Sec. 12, T. 31, R. 23

Gran. Mon. under Blk Top - Spk. Flush
R.K. Spk's 2' N.E. Set Cast Iron Mon.
Cor. 2' east of center line
Found 3/4" Iron Pipe. Replaced with Cast Iron Mon. Flush

May 30, 1975
D. Dahl
B. Sannerud

(Trees are same)
Trees as on old ties

Tie Check
July 18, 1968
D. Powell
P. Pieh
R. Olson



Retie 6/9/64
M. D. Anderson
R. Carlson

Set C.I. Mon
11/17/71
H. Larson
F. Waks

TIE CHECK
12 AUG 77
R. SANNERUD
S. BRIEN
J. STEPHENS

TEMPERATURE CORRECTED
AND HORIZONTALLY
TAPED MEASUREMENTS

9 Sept. 63
J. Oliver
E. Madson

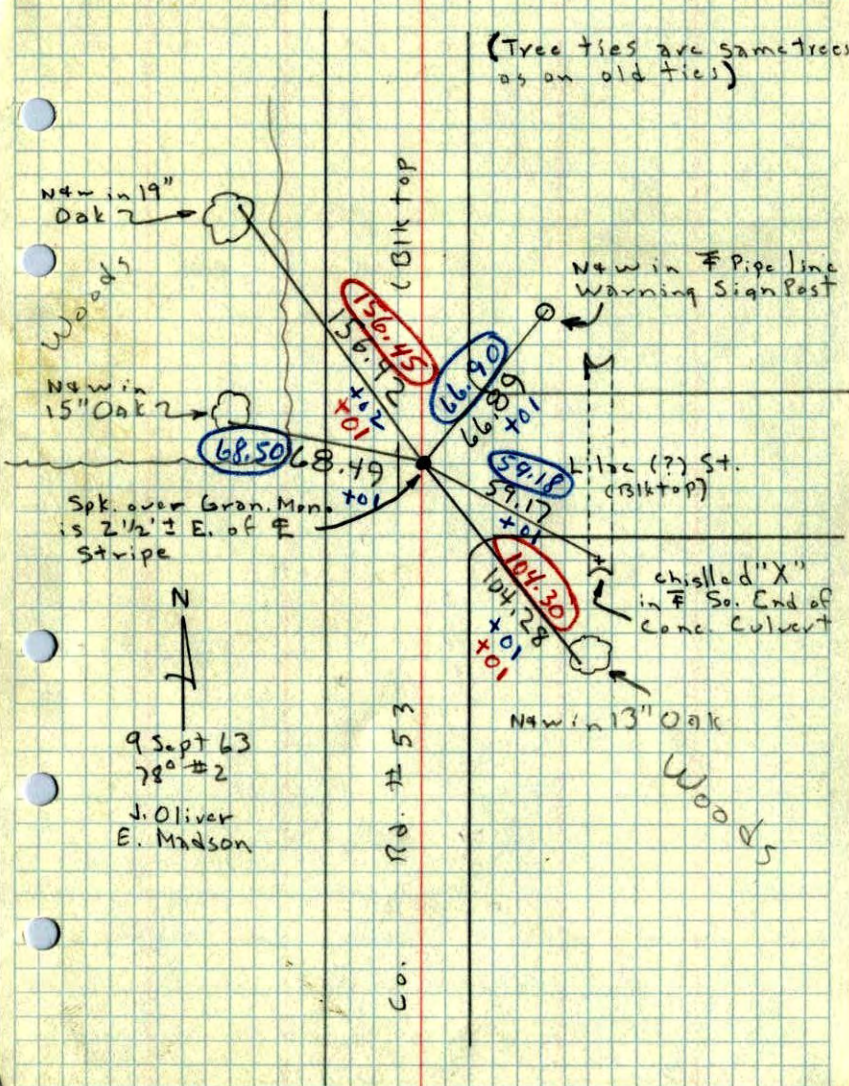
ROLAND W. ANDERSON
COUNTY SURVEYOR
ANOKA COUNTY, MINNESOTA

SE Cor. Sec. 12, T31, R23

Gran. Mon. under Blk top - Spk flush

PK Spk's 2' No. & East.

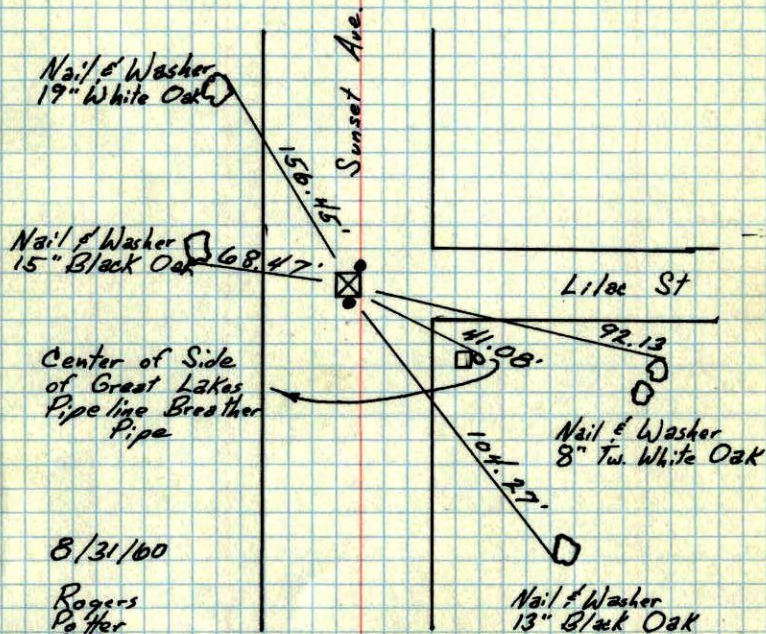
(Tree ties are same trees as on old ties)



SE 12 27
NE Cor. Sec 12 - T31 - R23

Granite Mon. down 1.5'

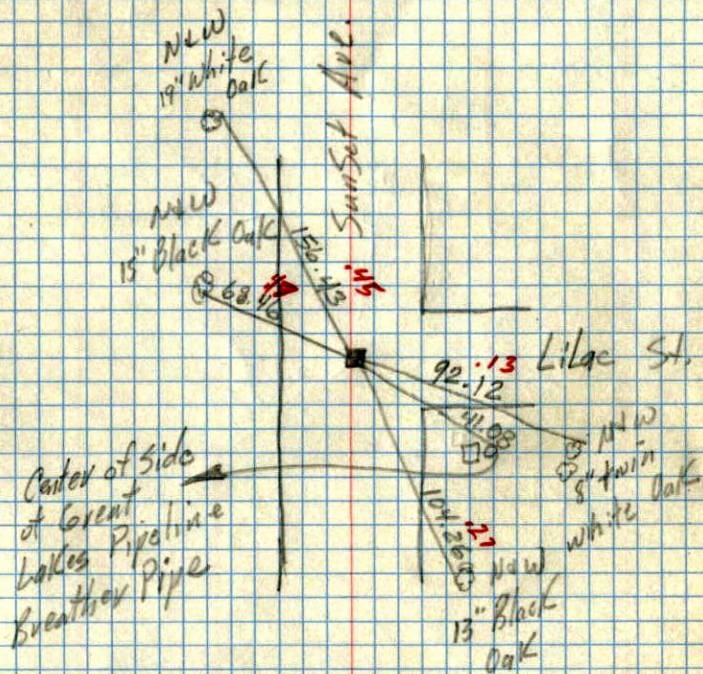
Iron Pipes on NE & South Sides



TEMPERATURE CORRECTED
AND HORIZONTALLY
TAPED MEASUREMENTS

ROLAND W. ANDERSON
COUNTY SURVEYOR
ANOKA COUNTY, MINNESOTA

SE 12 23
 NE Cor. Sec. 13 T31 R24
 Granite Mon. down 1/2"
 Iron Pipes on NE + South sides

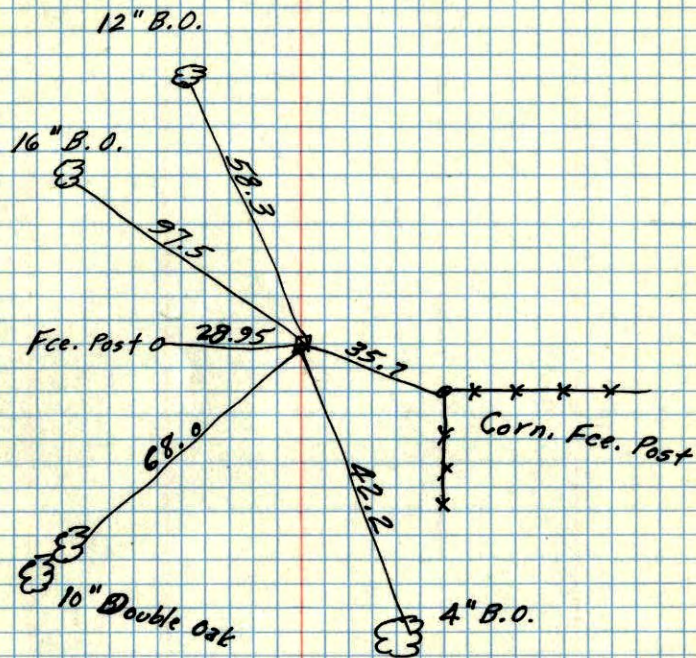


Center of Side
 of Great
 Lakes Pipeline
 Breather Pipe

1918/60

TC
 Temp. 90°
 8/31/60
 Bill Rogers
 Dennis Parker
 Dick Giddings
 Ralph Robinson
 Sandy Carlson

SE 12 16
 N.E. Corn. Sec. 13, T31, R23
 Granite, Flush



Dec. 1956
 Co. Hwy. Dept.

NE cor. sec 13 T31 R23
SE
Located granite flush with ground

Dec. 1956

