

CERTIFICATE OF LOCATION OF GOVERNMENT CORNER

County of Anoka State of Minnesota

Southwest Corner of Sec. 11 Township 31 Range 23

On the 10th day of September, 1963, the described corner was evidenced by a concrete monument

and to perpetuate the location of said corner, at the exact location thereof, a permanent marker was placed consisting of the same concrete monument with a sign and post on the north side
MON. UP 1'± LEANING NORTH NEEDS RESET

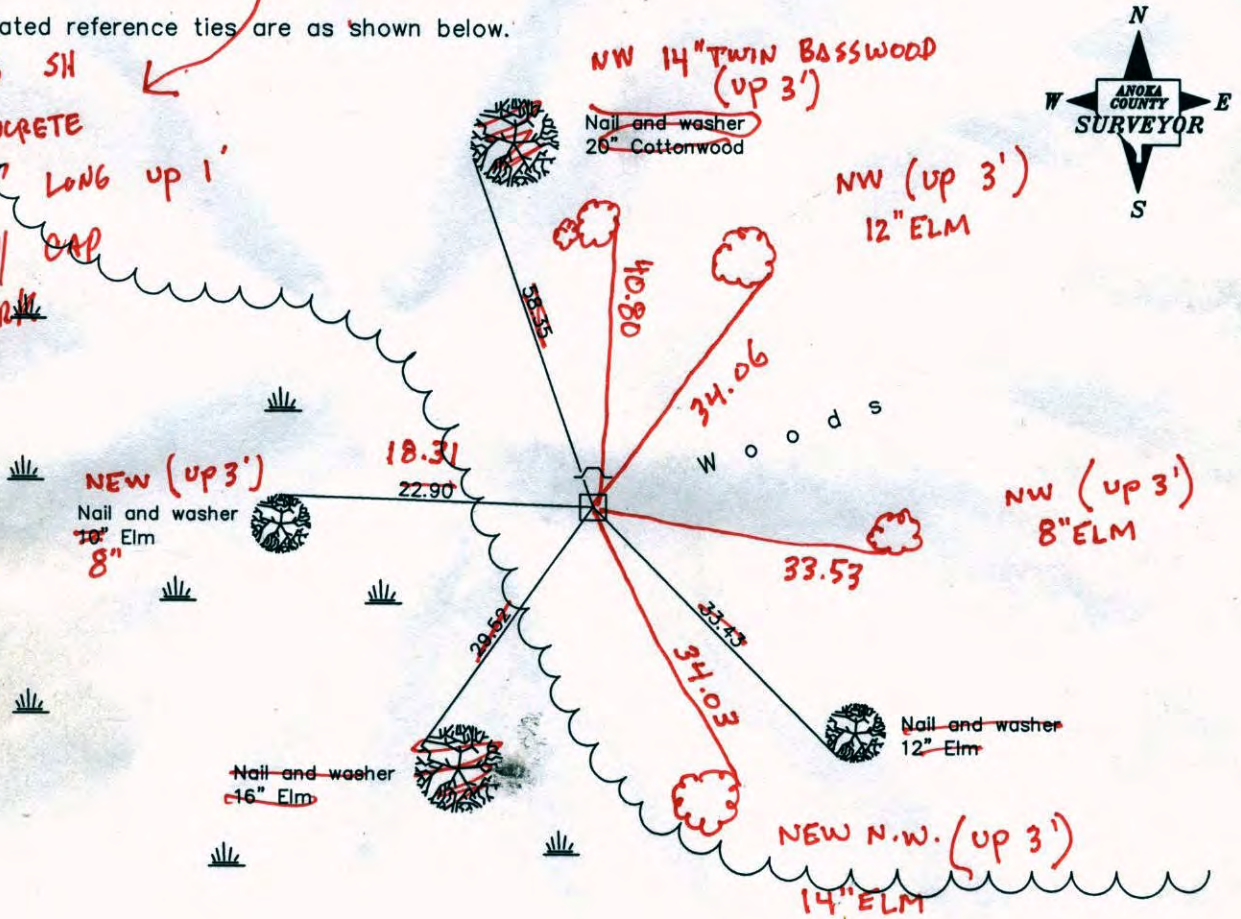
AND on the ___ day of _____, _____, said permanent marker was _____

Updated reference ties are as shown below.

5-21-14
WET
BK-55

7-29-14 JS SH
REMOVED CONCRETE
& SET 7' LONG UP 1'
TELSPAR W/ CAP
+ PUNCH MARK

TAPED
DIST'S



Revised date
8/08/90
7/24/95
8/24/99

N.A.D. 1983 Coordinates (1996 Adjustment)	
County Project Coordinates	
Northing	153554.4320
Easting	521366.4381
Date	8/24/99

I hereby certify that this United States public land survey monument record is correct and complete to the best of my knowledge and belief.

_____, Anoka County Surveyor

Minnesota License Number _____

STATIC } N.O.18
FLWT

CERTIFICATE OF LOCATION OF GOVERNMENT CORNER

County of Anoka

State of Minnesota

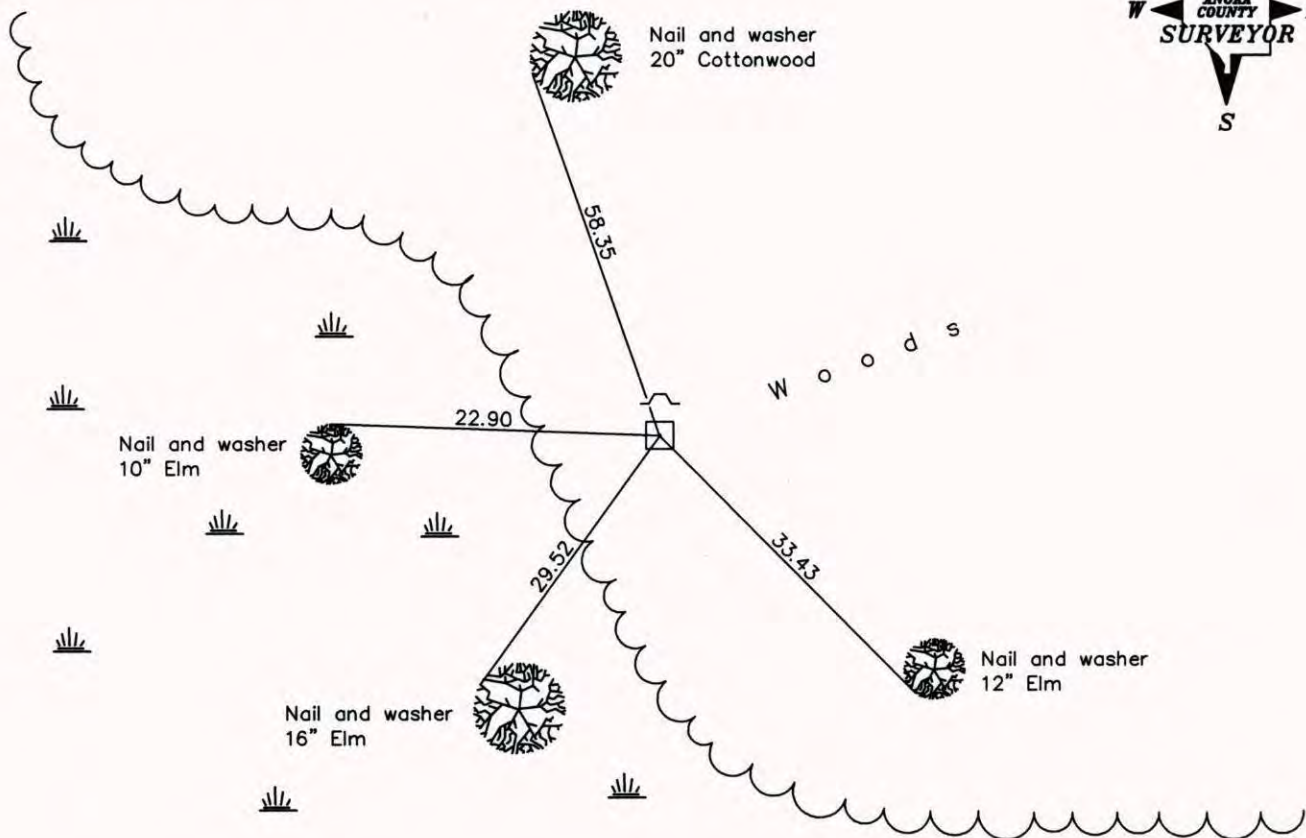
Southwest Corner of Sec. 11 Township 31 Range 23

On the 10th day of September, 1963, the described corner was evidenced by a concrete monument

and to perpetuate the location of said corner, at the exact location thereof, a permanent marker was placed consisting of the same concrete monument with a sign and post on the north side

AND on the ___ day of _____, _____, said permanent marker was _____

Updated reference ties are as shown below.



Revised date

8/08/90
7/24/95
8/24/99

N.A.D. 1983 Coordinates
(1996 Adjustment)

County Project Coordinates	
Northing	<u>153554.4320</u>
Easting	<u>521366.4381</u>
Date	<u>8/24/99</u>

I hereby certify that this United States public land survey monument record is correct and complete to the best of my knowledge and belief.

_____ Date _____
 _____, Anoka County Surveyor
 Minnesota License Number _____

CERTIFICATE OF LOCATION OF GOVERNMENT CORNER

County of Anoka

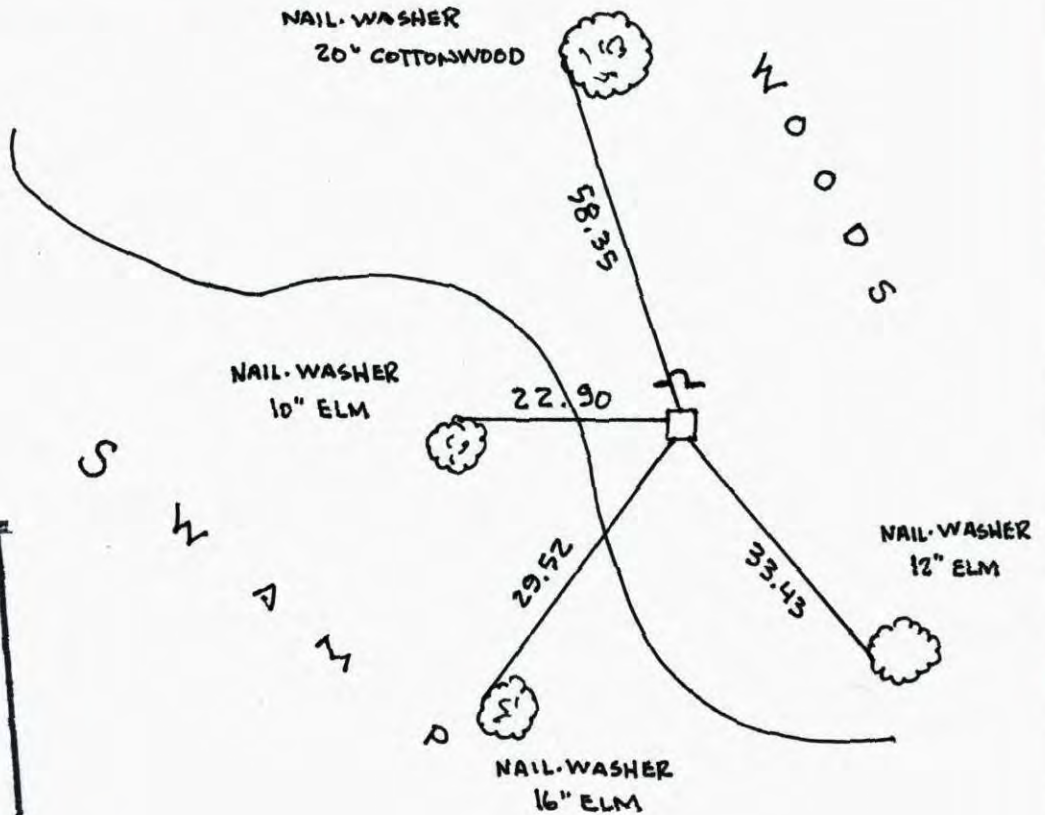
State of Minnesota

SOUTHWEST Corner of Sec. 11 Township 31 Range 23

I hereby certify that on the 10TH day of SEPTEMBER, 19 63, I found the described corner which was evidenced by CONCRETE MONUMENT

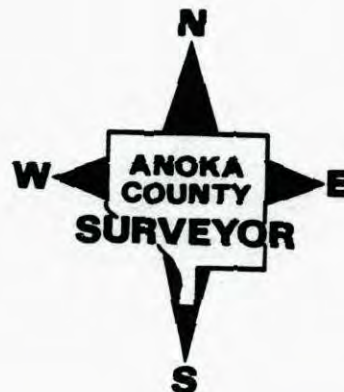
and I further certify that to perpetuate the location of said corner, I did, at the exact location thereof, place a permanent marker consisting of CONCRETE MONUMENT SIGN POST ON NORTH SIDE

which reference or witness monuments are located in the manner following:



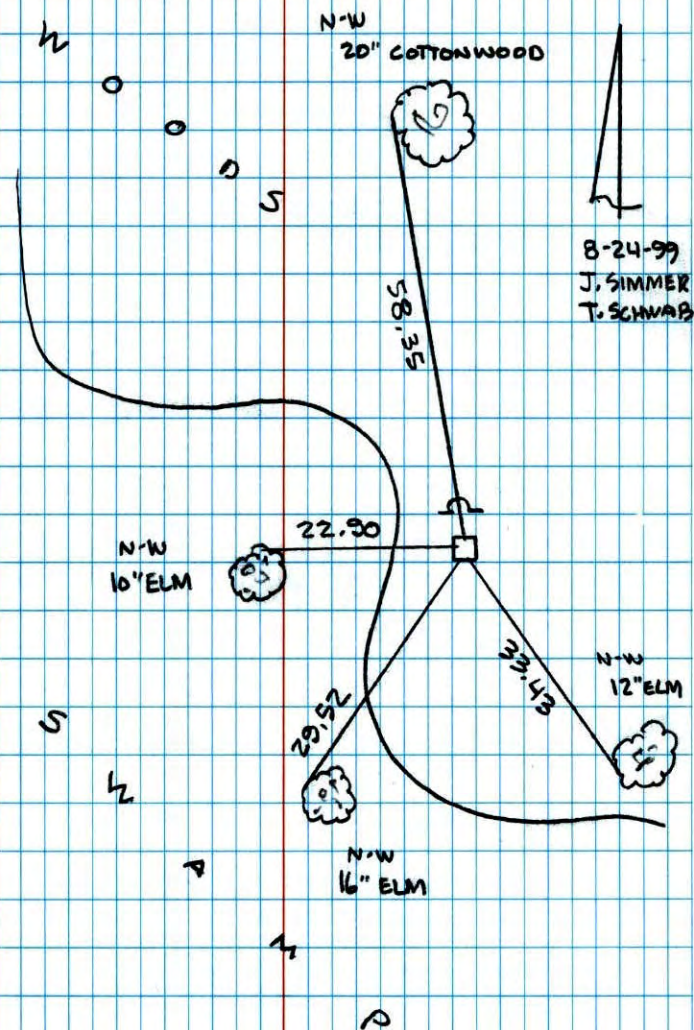
N.A.D:	1983	Co-ordinates
County Project		Co-ordinates
Northing	<u>153554.4320</u>	
Easting	<u>521366.4381</u>	
State Plane	Co-ordinates	
Y	_____	
X	_____	
Date	<u>8/24/99</u>	

Revised date	Revised date	Revised date
6-11-86		
8-8-90		
7-24-95		
8-24-99		



SOUTHWEST COR. SEC 11 T31 R23

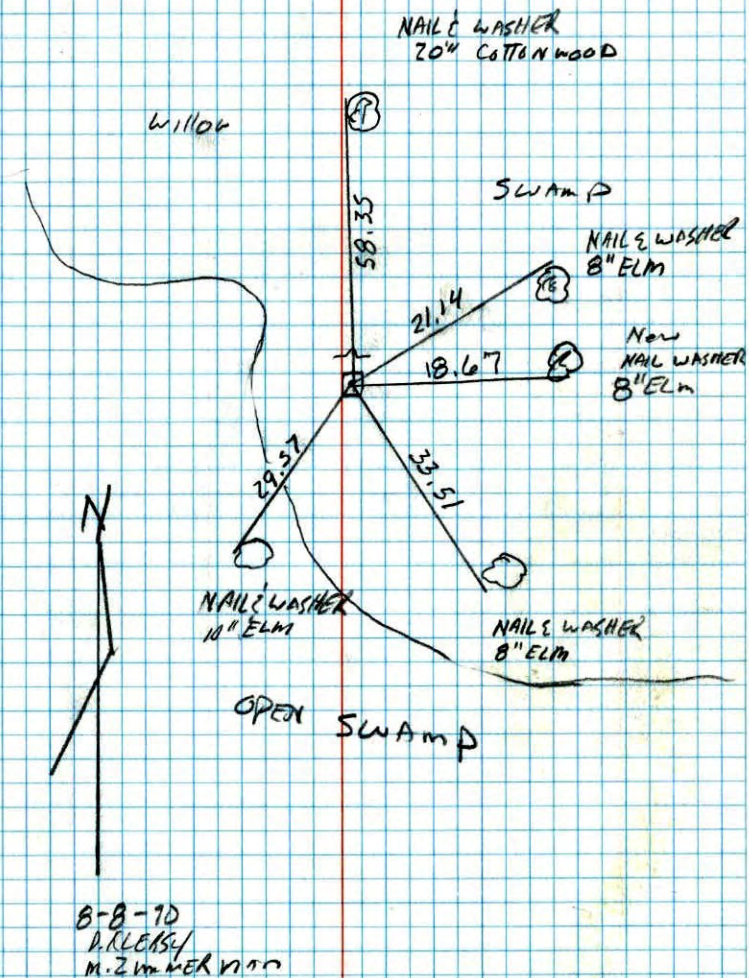
RETIED CONG. MON. SIGN & POST ON N. SIDE



NO. 448

NATIONAL FOREST

South west corner sec 11 T 31 R 23

Retied concrete monument
sign and post

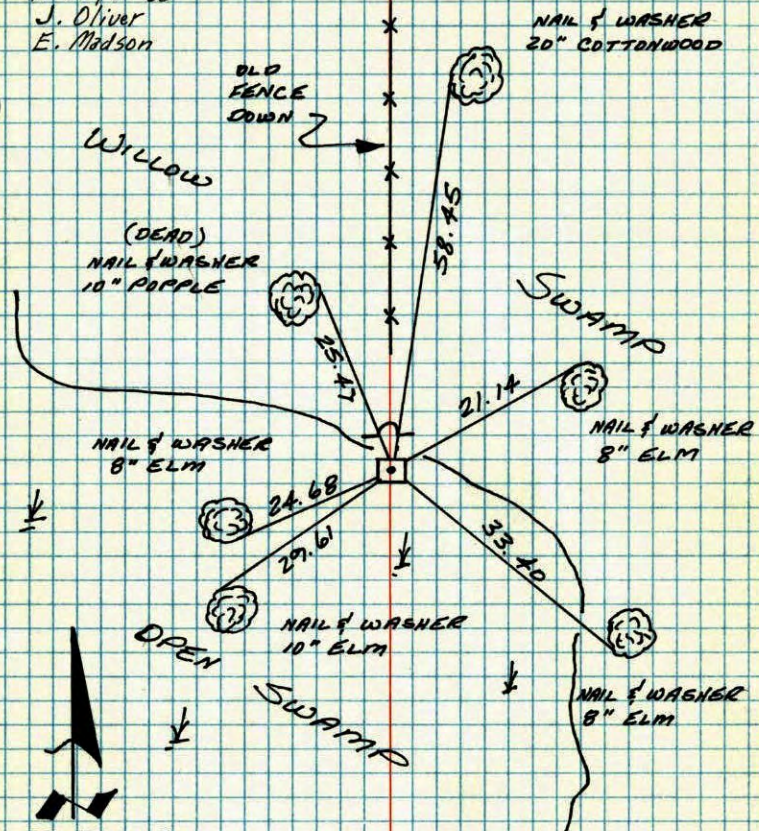
NO. 448

NATIONAL FOREST

S.W. CORNER SECTION 11 - T31 - R23

FOUND CONCRETE MONUMENT LEANING SLIGHTLY. STRAIGHTENED AND RETIED. SIGN AND POST ON NORTH SIDE.

10 Sept '63
J. Oliver
E. Madson



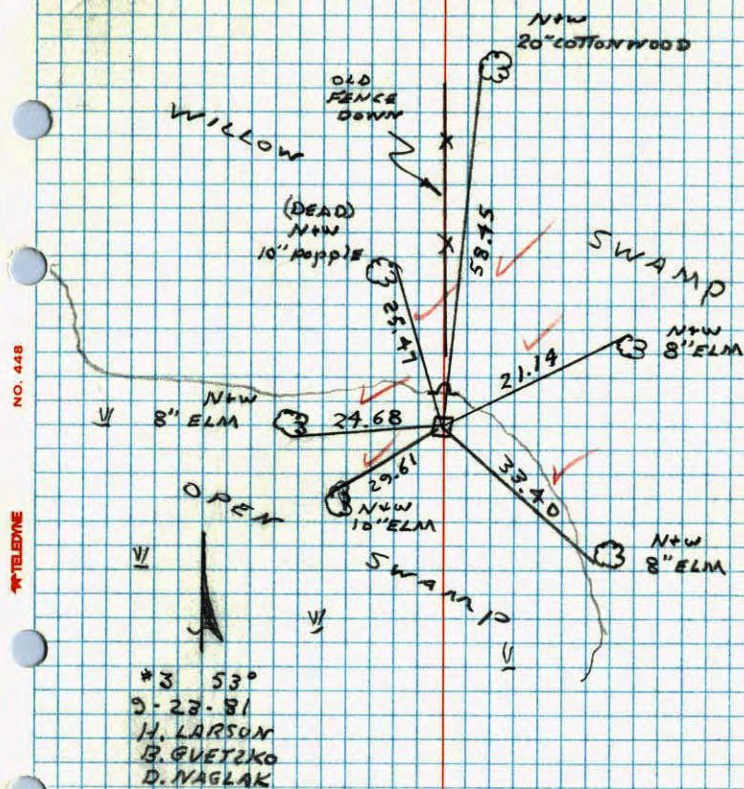
28 SEPT 81
H. LARSON
B. GUETZKO
D. NAGLAK

TEMPERATURE CORRECTED
AND HORIZONTALLY
TAPED MEASUREMENTS

ROLAND W. ANDERSON
COUNTY SURVEYOR
ANOKA COUNTY, MINNESOTA

SW CORNER SECTION 11 T31 R23

FOUND CONCRETE LEANING SLIGHTLY. STRAIGHTENED AND RETIED SIGN AND POST ON NORTH SIDE.

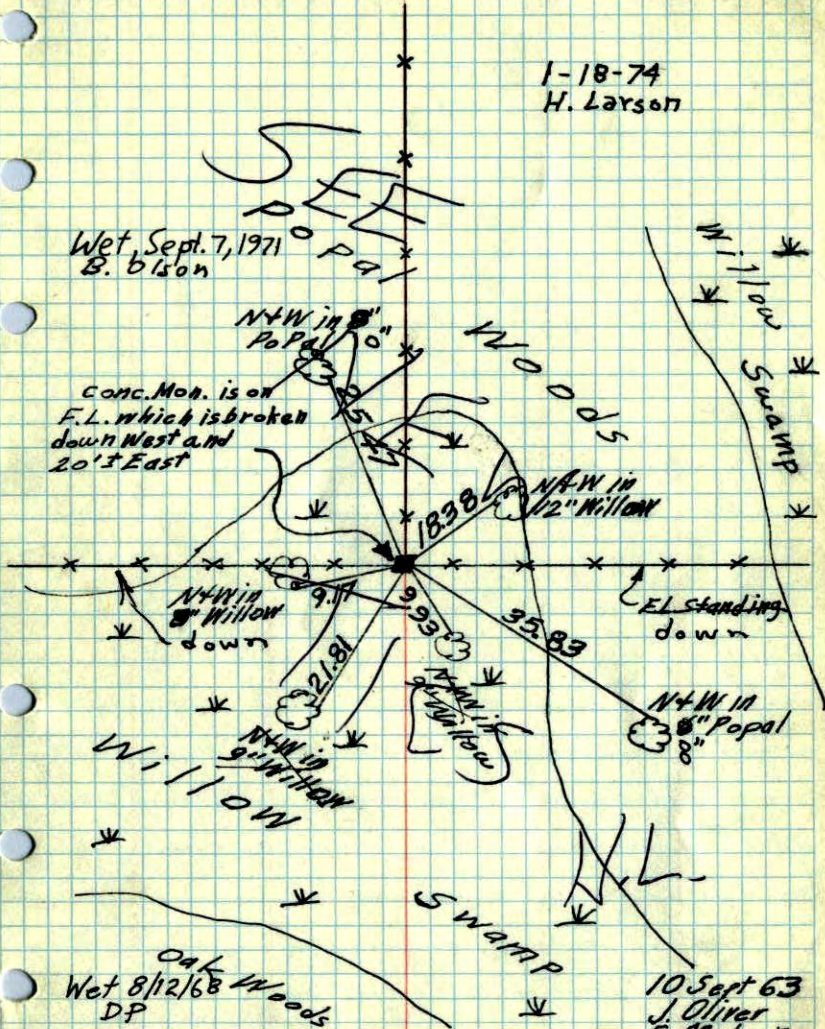


#3 53°
9-23-81
H. LARSON
B. GUETZKO
D. NAGLAK

SW. Cor. Sec. 11, T. 31, R. 23

Found 4" Sq. Conc. Mon. up 0.5' from H.A.C.'s
1948 ties. Blazed "X's in near faces of all tie trees

1-18-74
H. Larson



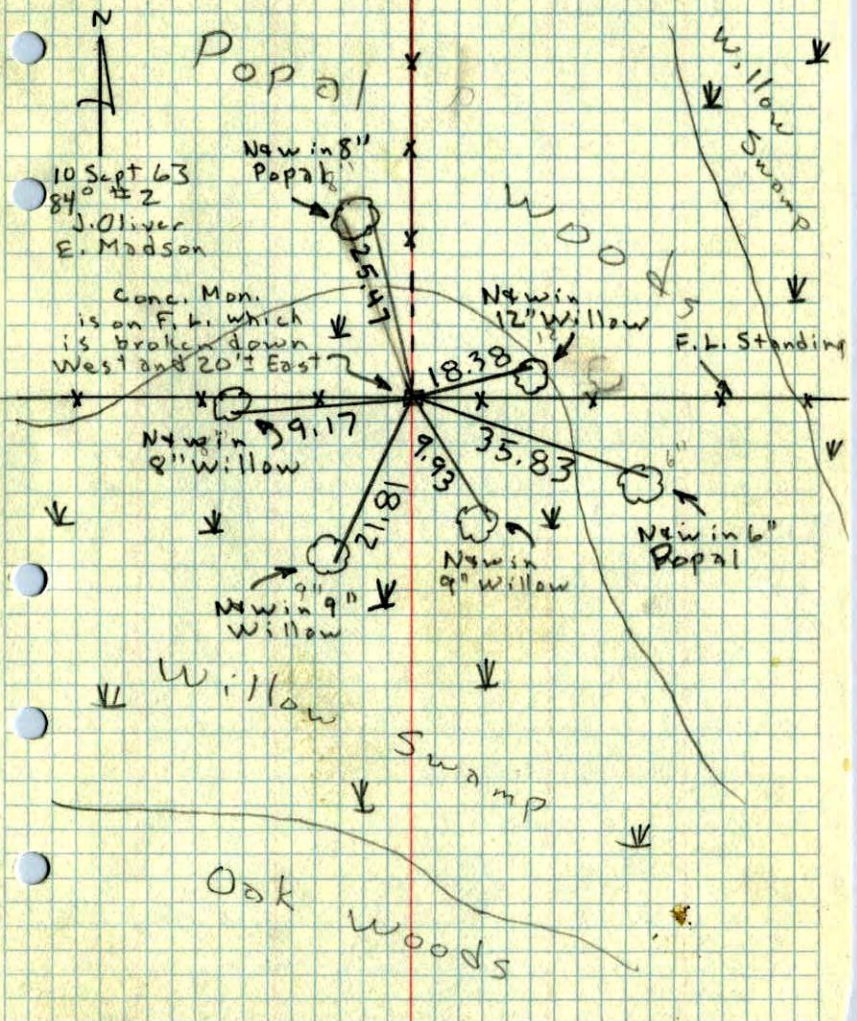
TEMPERATURE CORRECTED
AND HORIZONTALLY
TAPED MEASUREMENTS

ROLAND W. ANDERSON
COUNTY SURVEYOR
ANOKA COUNTY, MINNESOTA

SW Cor. Sec. 11, T. 31, R. 23

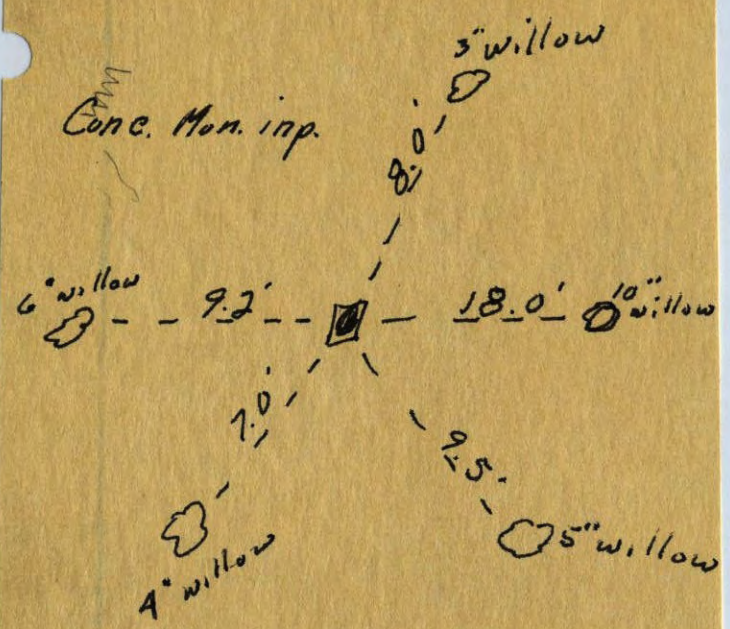
Found 4" Sq. Conc. Mon. up 0.5' From
H.A.C.'s 1948 ties. Blazed "X's in near
faces of all tie trees.

N
10 Sept 63
84° ± 2
J. Oliver
E. Madson



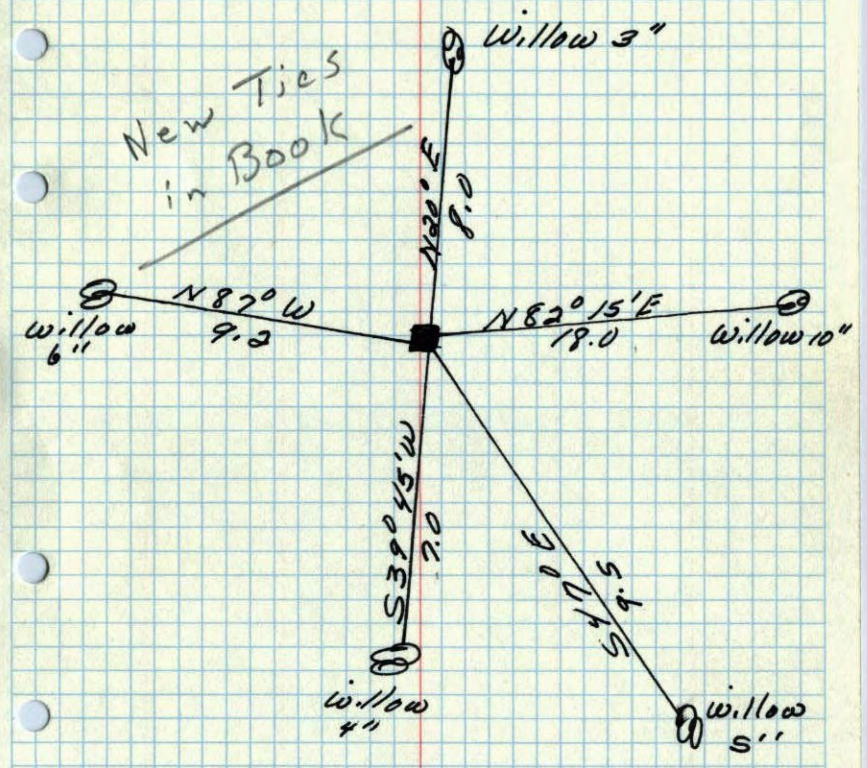
Wet 8/12/68 DP

SW cor. sec. 11 T 31 R 23
 Dec. 1956



Conc. Mon. 6" above ground on
 fence line E & W. and fence N.

28 ✓
 SW COR. of Sec. 11 T 31 R 23
 Conc. Mon. up 0.5



No. 23, 1948
 Cartwright