

CERTIFICATE OF LOCATION OF GOVERNMENT CORNER

County of Anoka

State of Minnesota

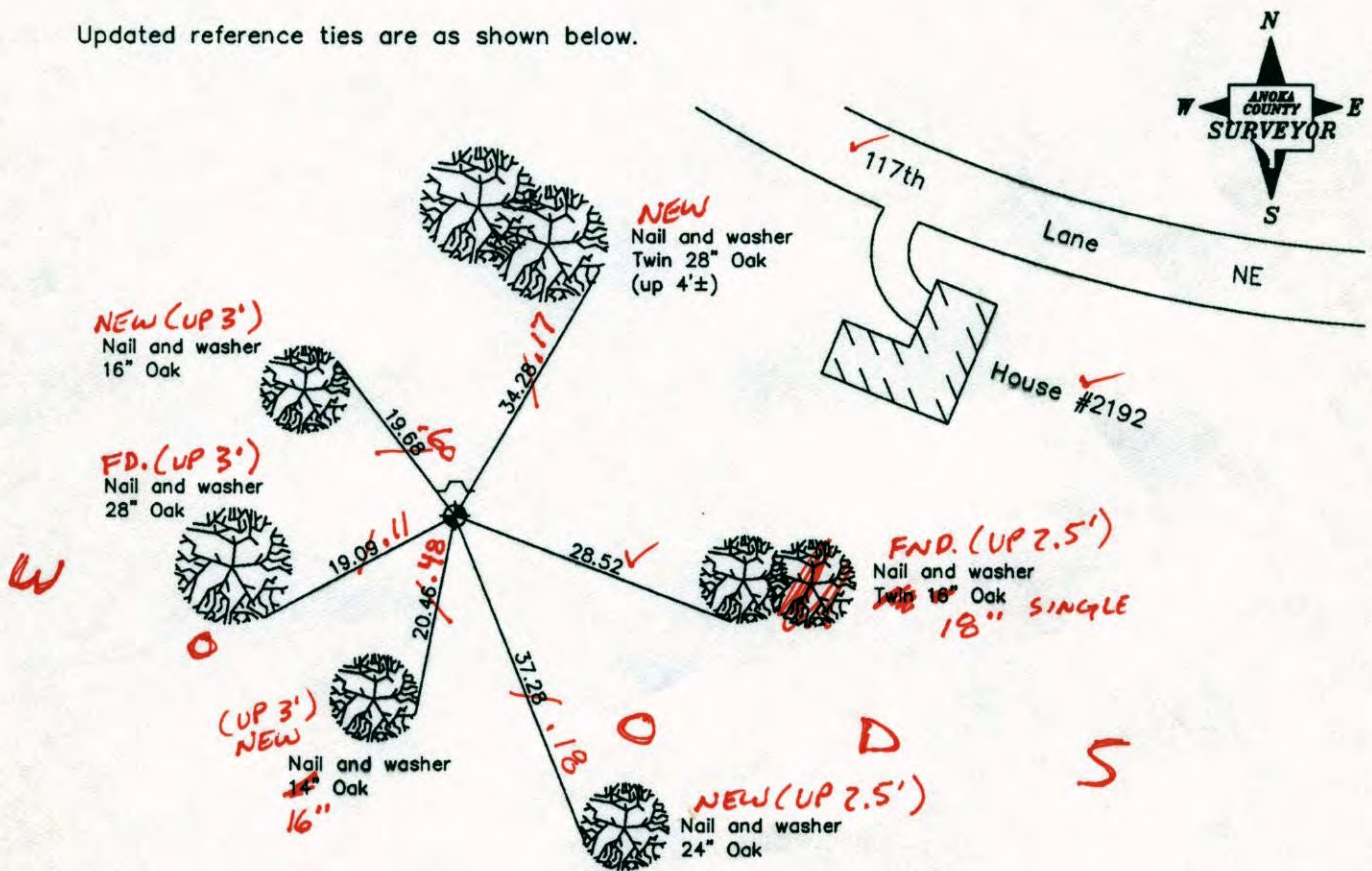
South 1/4 Corner of Sec. 9 Township 31 Range 23

On the 11th day of July, 1963, the described corner was evidenced by a 2" iron pipe

and to perpetuate the location of said corner, at the exact location thereof, a permanent marker was placed consisting of a cast iron monument with a sign and post on the north side (UP 0.2'±)

AND on the 12th day of July, 2006, said permanent marker was found and the ties were updated

Updated reference ties are as shown below.



5-14-14
BK-55
TAPED

Revised date	
	7/24/95
	11/09/98
	7/12/06

N.A.D. 1983 Coordinates (1996 Adjustment)	
County Project Coordinates	
Northing	513725.8542
Easting	513468.1043
Date	11/09/98

I hereby certify that this United States public land survey monument record is correct and complete to the best of my knowledge and belief.

Larry D. Hoium Date 7/12/06
 Larry D. Hoium, Anoka County Surveyor
 Minnesota License Number 18165

CERTIFICATE OF LOCATION OF GOVERNMENT CORNER

County of Anoka

State of Minnesota

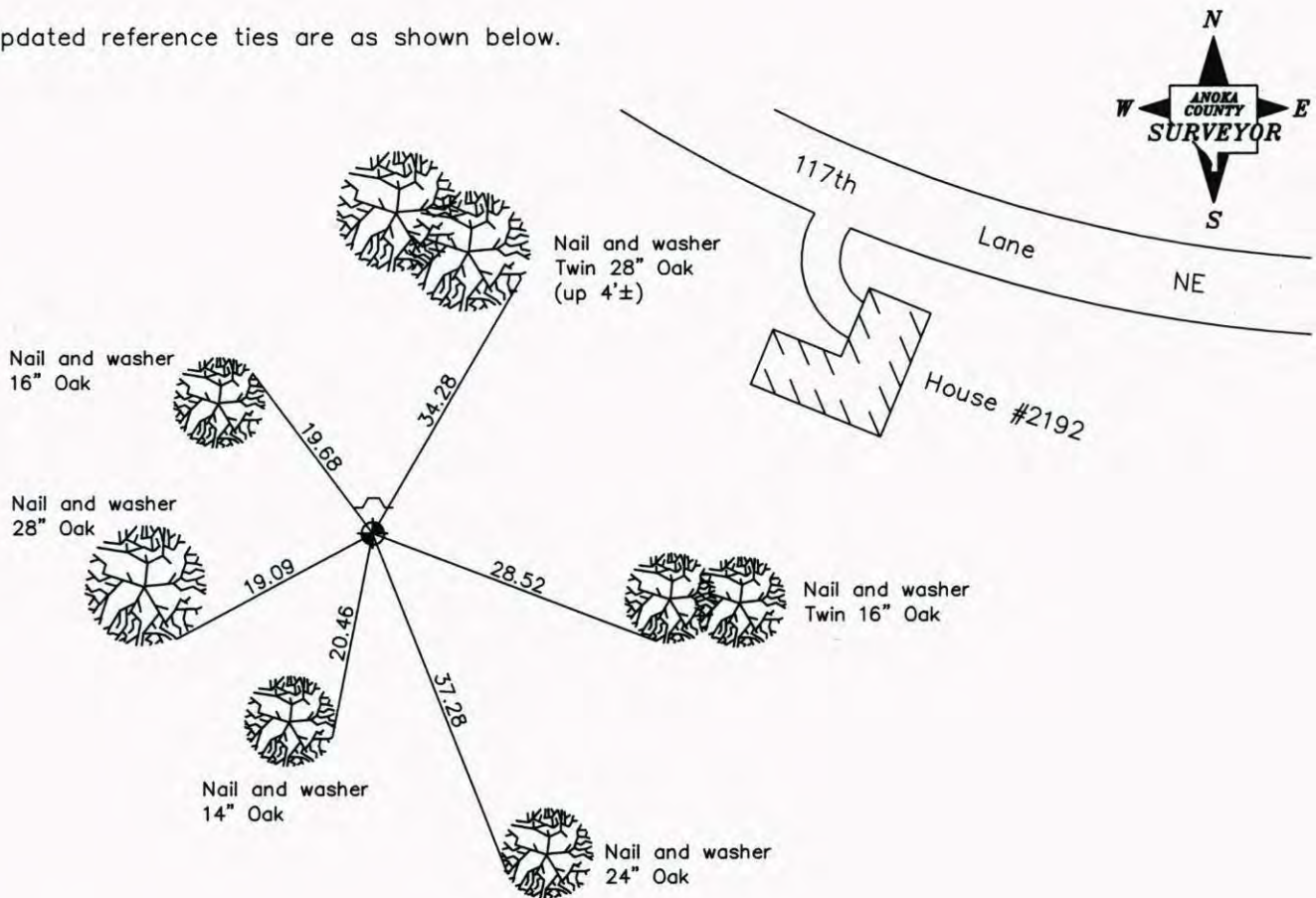
South 1/4 Corner of Sec. 9 Township 31 Range 23

On the 11th day of July, 1963, the described corner was evidenced by a 2" iron pipe

and to perpetuate the location of said corner, at the exact location thereof, a permanent marker was placed consisting of a cast iron monument with a sign and post on the north side

AND on the 12th day of July, 2006, said permanent marker was found and the ties were updated

Updated reference ties are as shown below.



Revised date
7/24/95
11/09/98
7/12/06

N.A.D. 1983 Coordinates (1996 Adjustment)	
County Project Coordinates	
Northing	<u>153725.8542</u>
Easting	<u>513468.1043</u>
Date	<u>11/09/98</u>

I hereby certify that this United States public land survey monument record is correct and complete to the best of my knowledge and belief.

Larry D. Hoium Date 7/12/06

Larry D. Hoium, Anoka County Surveyor

Minnesota License Number 18165

CERTIFICATE OF LOCATION OF GOVERNMENT CORNER

County of Anoka

State of Minnesota

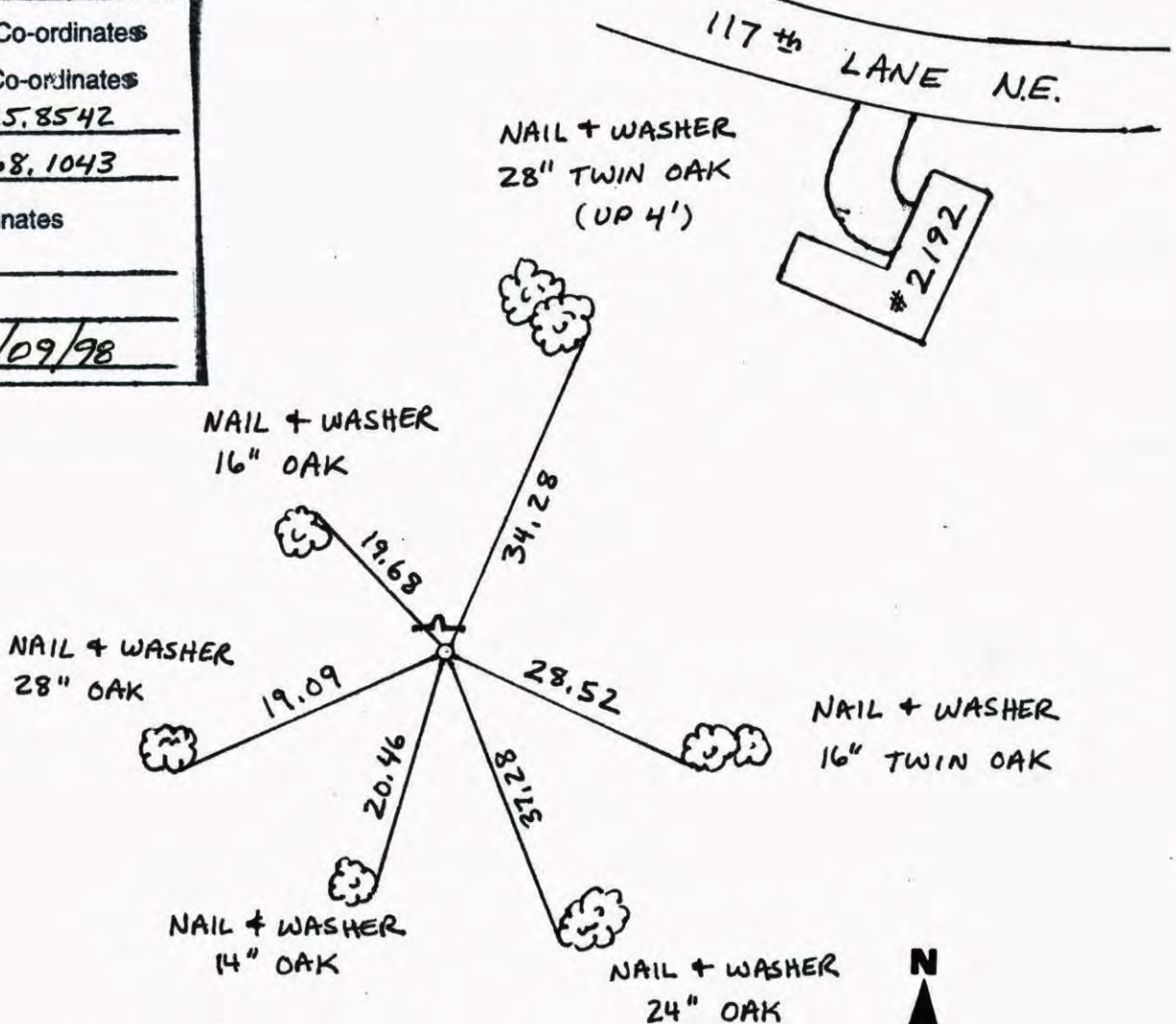
SOUTH $\frac{1}{4}$ Corner of Sec. 9 Township 31 Range 23

I hereby certify that on the 11 day of JULY, 19 63, I found the described corner which was evidenced by 2" IRON PIPE

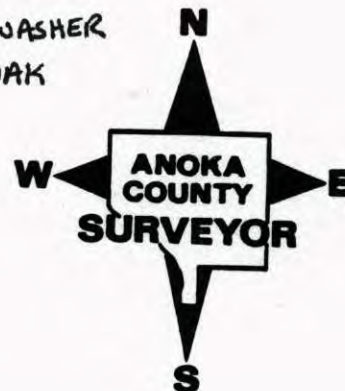
and I further certify that to perpetuate the location of said corner, I did, at the exact location thereof, place a permanent marker consisting of CAST IRON MONUMENT, SIGN & POST ON NORTH

which reference or witness monuments are located in the manner following:

N.A.D.	1983	Co-ordinates
County	Project	Co-ordinates
Northing	<u>153725.8542</u>	
Easting	<u>513468.1043</u>	
State Plane Co-ordinates		
Y	_____	
X	_____	
Date	<u>11/09/98</u>	



Revised date	Revised date	Revised date
<u>11-6-90</u>		
<u>7-24-95</u>		
<u>11-9-98</u>		
<u>7-12-06</u>		



117TH

CERTIFICATE OF LOCATION OF GOVERNMENT CORNER

County of Anoka

State of Minnesota

LANE NE.

SOUTH QTR. Corner of Sec. 9 Township 31 Range 23

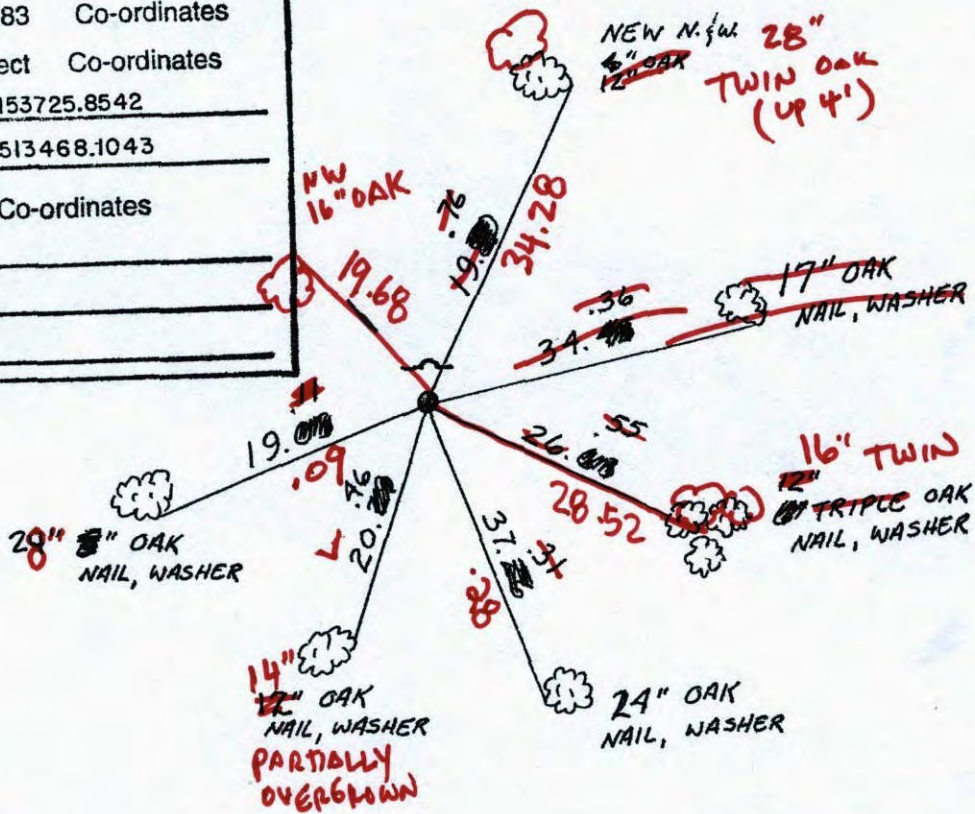
I hereby certify that on the 11 day of JULY, 1963, I found the described corner which was evidenced by 2" I. P.

2192

and I further certify that to perpetuate the location of said corner, I did, at the exact location thereof, place a permanent marker consisting of CAST IRON MON.
SIGN & POST ON NORTH

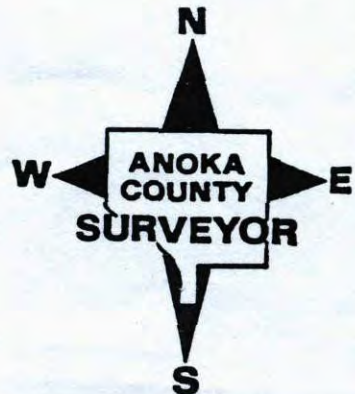
which reference or witness monuments are located in the manner following:

N.A.D.	1983	Co-ordinates
County	Project	Co-ordinates
Northing	153725.8542	
Easting	513468.1043	
State Plane	Co-ordinates	
Y		
X		
Date		



7.12.06

Revised date	Revised date	Revised date
11-6-90		
7-24-95		
11-9-98		



CERTIFICATE OF LOCATION OF GOVERNMENT CORNER

County of Anoka State of Minnesota

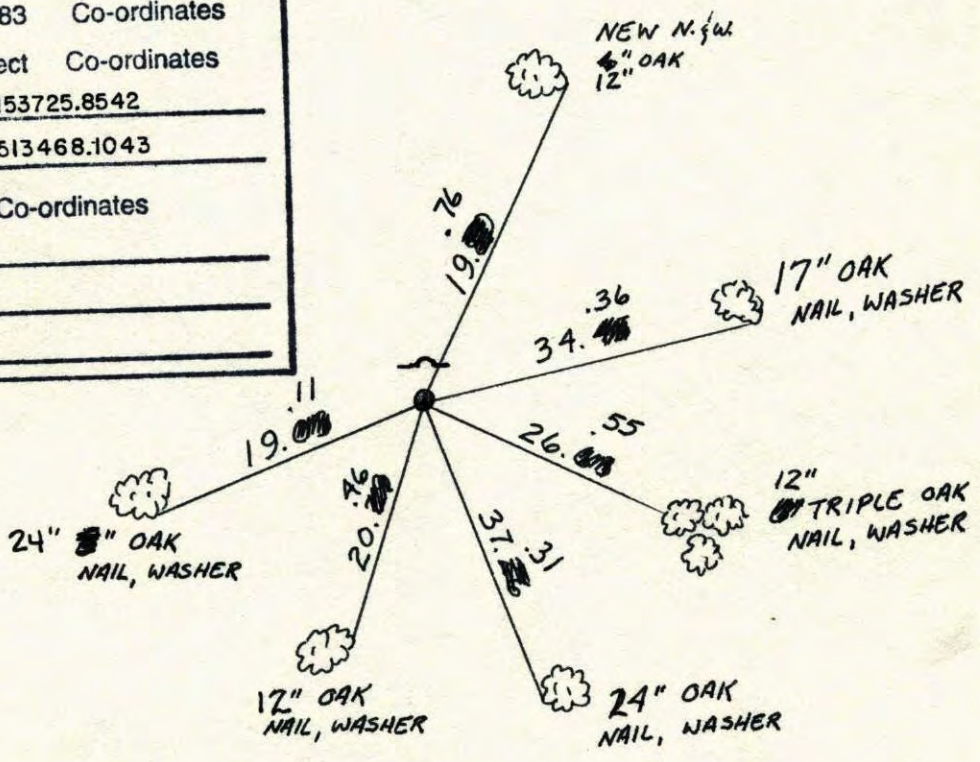
SOUTH QTR. Corner of Sec. 9 Township 31 Range 23

I hereby certify that on the 11 day of JULY, 1963, I found the described corner which was evidenced by 2" I. P.

and I further certify that to perpetuate the location of said corner, I did, at the exact location thereof, place a permanent marker consisting of CAST IRON MON.
SIGN & POST ON NORTH

which reference or witness monuments are located in the manner following:

N.A.D.	1983	Co-ordinates
County	Project	Co-ordinates
Northing	<u>153725.8542</u>	
Easting	<u>513468.1043</u>	
State Plane Co-ordinates		
Y	_____	
X	_____	
Date	_____	



Revised date	Revised date	Revised date
11-6-90		
7-24-95		
11-9-98		

