

CERTIFICATE OF LOCATION OF GOVERNMENT CORNER

County of Anoka State of Minnesota

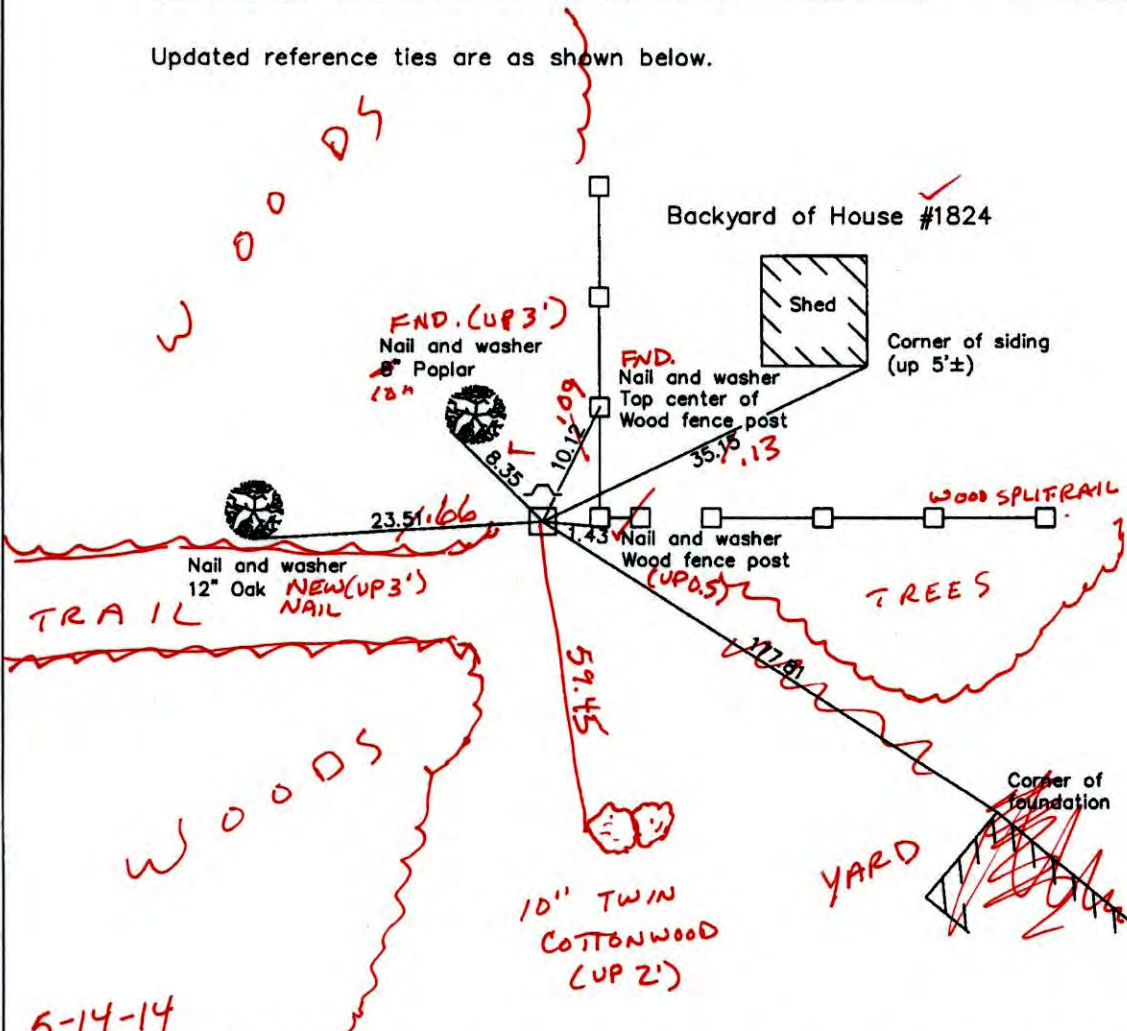
Southwest Corner of Sec. 9 Township 31 Range 23

On the 18th day of June, 1962, the described corner was evidenced by a granite monument

and to perpetuate the location of said corner, at the exact location thereof, a permanent marker was placed consisting of the same granite monument with a sign and post on the north side

AND on the 11th day of July, 2006, said permanent marker was found and the ties were updated

Updated reference ties are as shown below.



5-14-14
BK-SS
TAPED

Revised date	7/24/95
	11/09/98
	7/11/06

N.A.D. 1983 Coordinates (1996 Adjustment)	
County Project Coordinates	
Northing	153742.7644
Easting	510833.9341
Date	11/09/98

I hereby certify that this United States public land survey monument record is correct and complete to the best of my knowledge and belief.

Larry D. Hoium Date 7/11/06

Larry D. Hoium, Anoka County Surveyor

Minnesota License Number 18165

CERTIFICATE OF LOCATION OF GOVERNMENT CORNER

County of Anoka

State of Minnesota

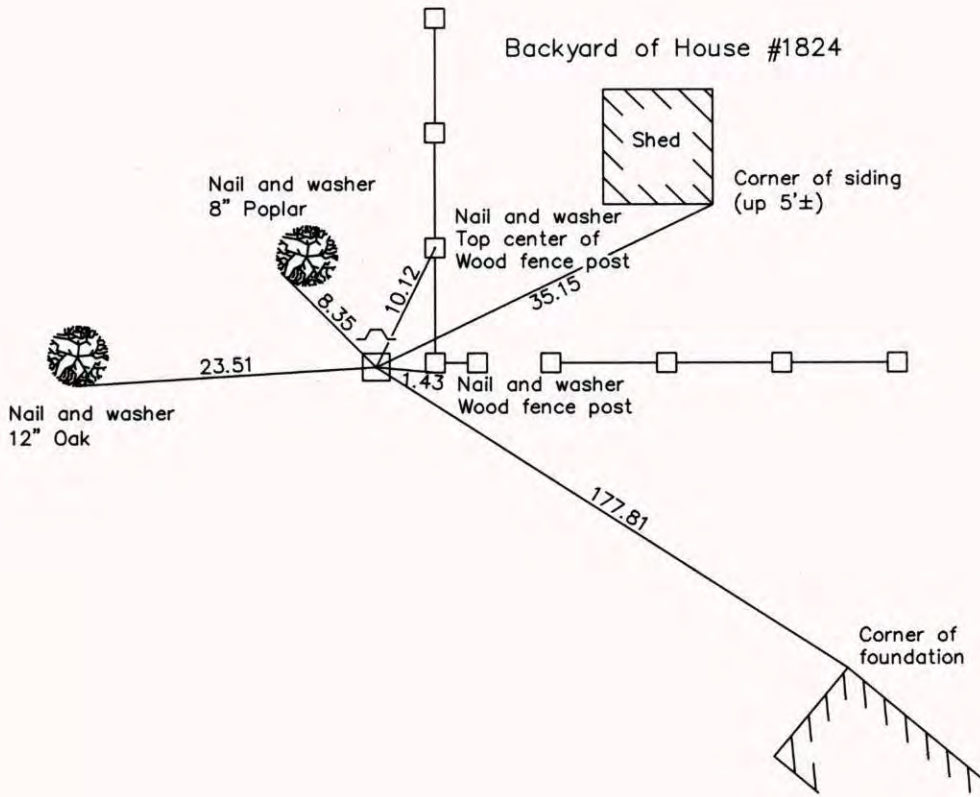
Southwest Corner of Sec. 9 Township 31 Range 23

On the 18th day of June, 1962, the described corner was evidenced by a granite monument

and to perpetuate the location of said corner, at the exact location thereof, a permanent marker was placed consisting of the same granite monument with a sign and post on the north side

AND on the 11th day of July, 2006, said permanent marker was found and the ties were updated

Updated reference ties are as shown below.



Revised date
7/24/95
11/09/98
7/11/06

N.A.D. 1983 Coordinates (1996 Adjustment)	
County Project Coordinates	
Northing	153742.7644
Easting	510833.9341
Date	11/09/98

I hereby certify that this United States public land survey monument record is correct and complete to the best of my knowledge and belief.

Date 7/11/06

Larry D. Hoium, Anoka County Surveyor

Minnesota License Number 18165

CERTIFICATE OF LOCATION OF GOVERNMENT CORNER

County of Anoka

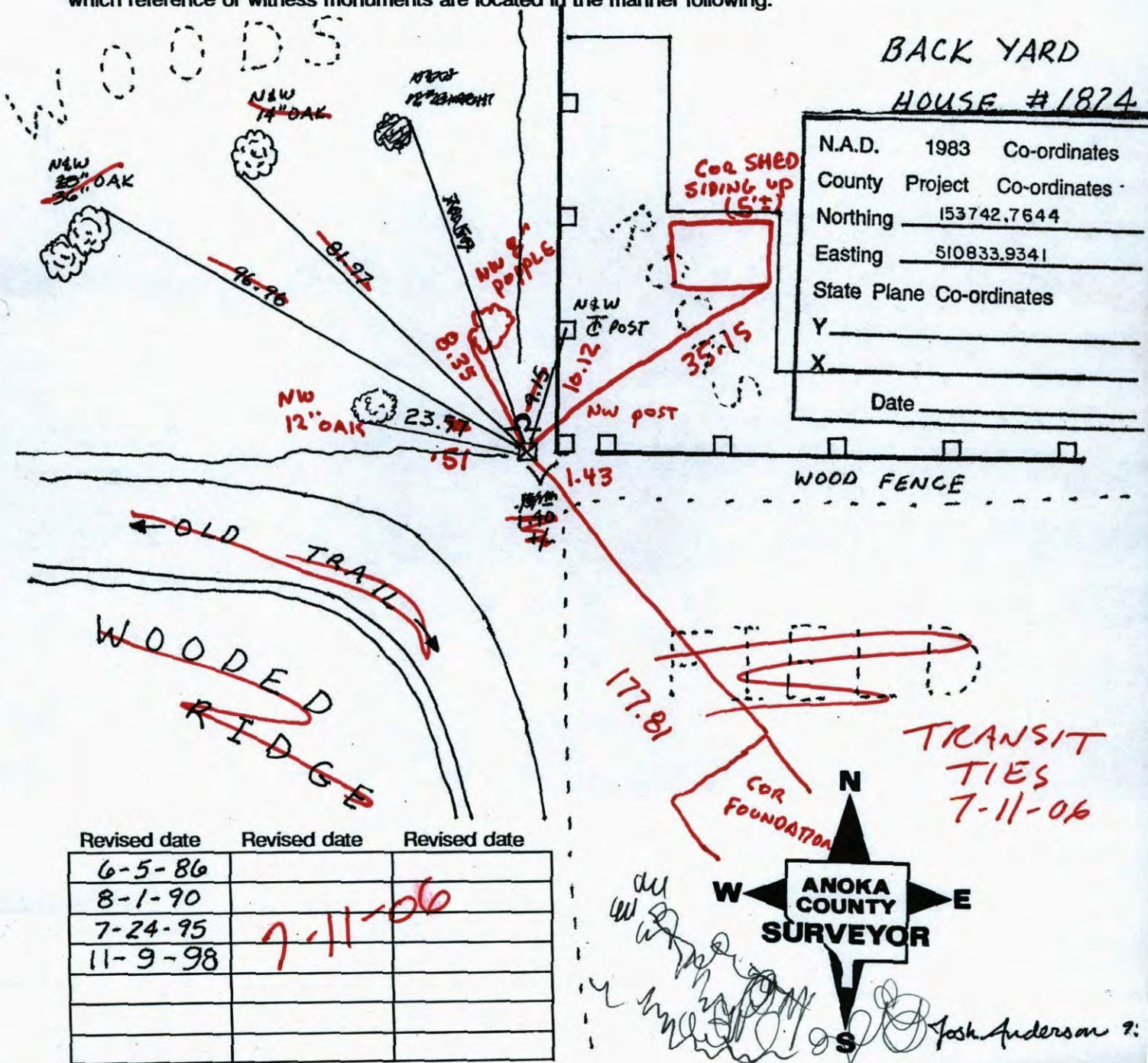
State of Minnesota

SOUTHWEST Corner of Sec. 9 Township 31 Range 23

I hereby certify that on the 18 day of JUNE, 1962, I found the described corner which was evidenced by GRANITE MONUMENT

and I further certify that to perpetuate the location of said corner, I did, at the exact location thereof, place a permanent marker consisting of GRANITE MONUMENT ; SIGN AND POST ON NORTH SIDE

which reference or witness monuments are located in the manner following:



Revised date	Revised date	Revised date
6-5-86		
8-1-90		
7-24-95	7-11-06	
11-9-98		

CERTIFICATE OF LOCATION OF GOVERNMENT CORNER

County of Anoka

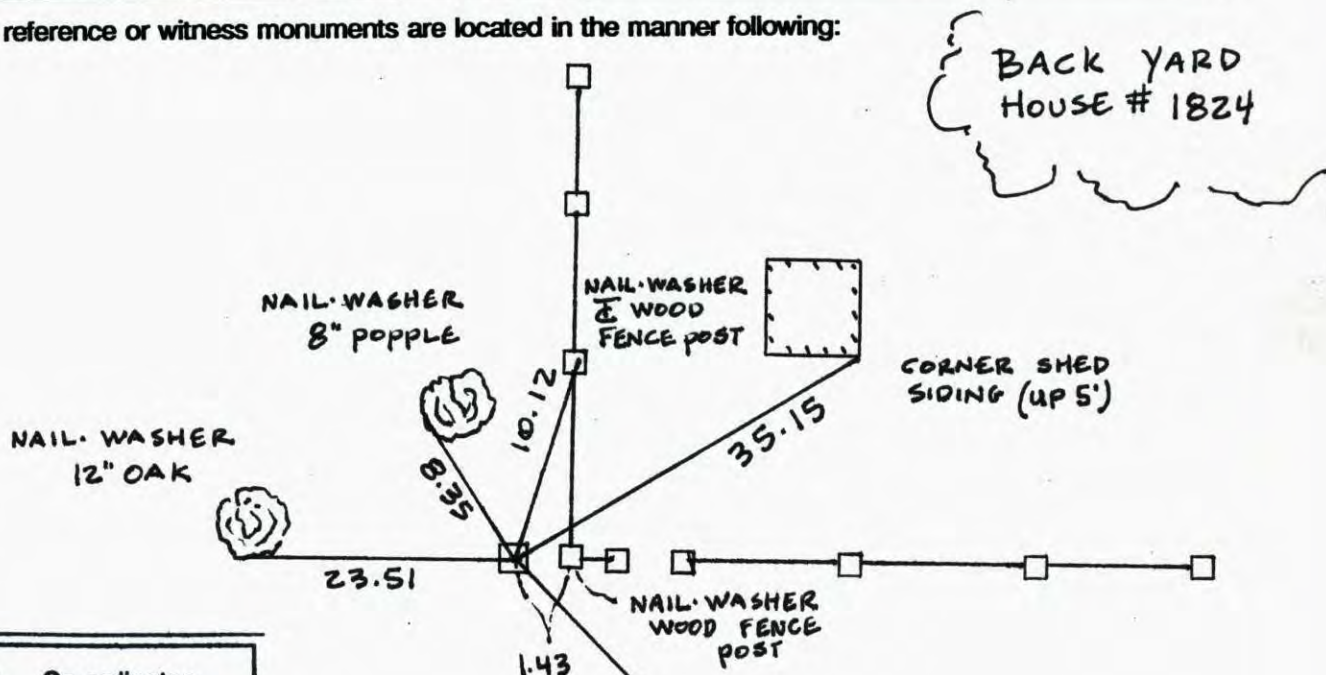
State of Minnesota

SOUTHWEST Corner of Sec. 9 Township 31 Range 23

I hereby certify that on the 18TH day of JUNE, 19 62, I found the described corner which was evidenced by GRANITE MONUMENT

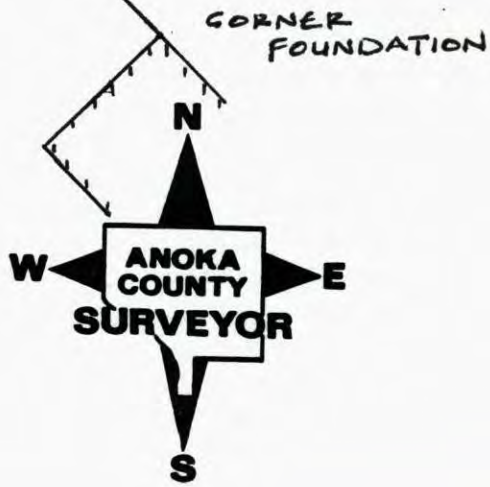
and I further certify that to perpetuate the location of said corner, I did, at the exact location thereof, place a permanent marker consisting of GRANITE MONUMENT
SIGN + POST NORTH SIDE

which reference or witness monuments are located in the manner following:



N.A.D.	1983	Co-ordinates
County	Project	Co-ordinates
Northing	<u>153742.7644</u>	
Easting	<u>510833.9341</u>	
State Plane Co-ordinates		
Y	_____	
X	_____	
Date	<u>11/09/98</u>	

Revised date	Revised date	Revised date
<u>6-5-86</u>		
<u>8-1-90</u>		
<u>7-24-95</u>		
<u>11-9-98</u>		
<u>7-11-06</u>		



CERTIFICATE OF LOCATION OF GOVERNMENT CORNER

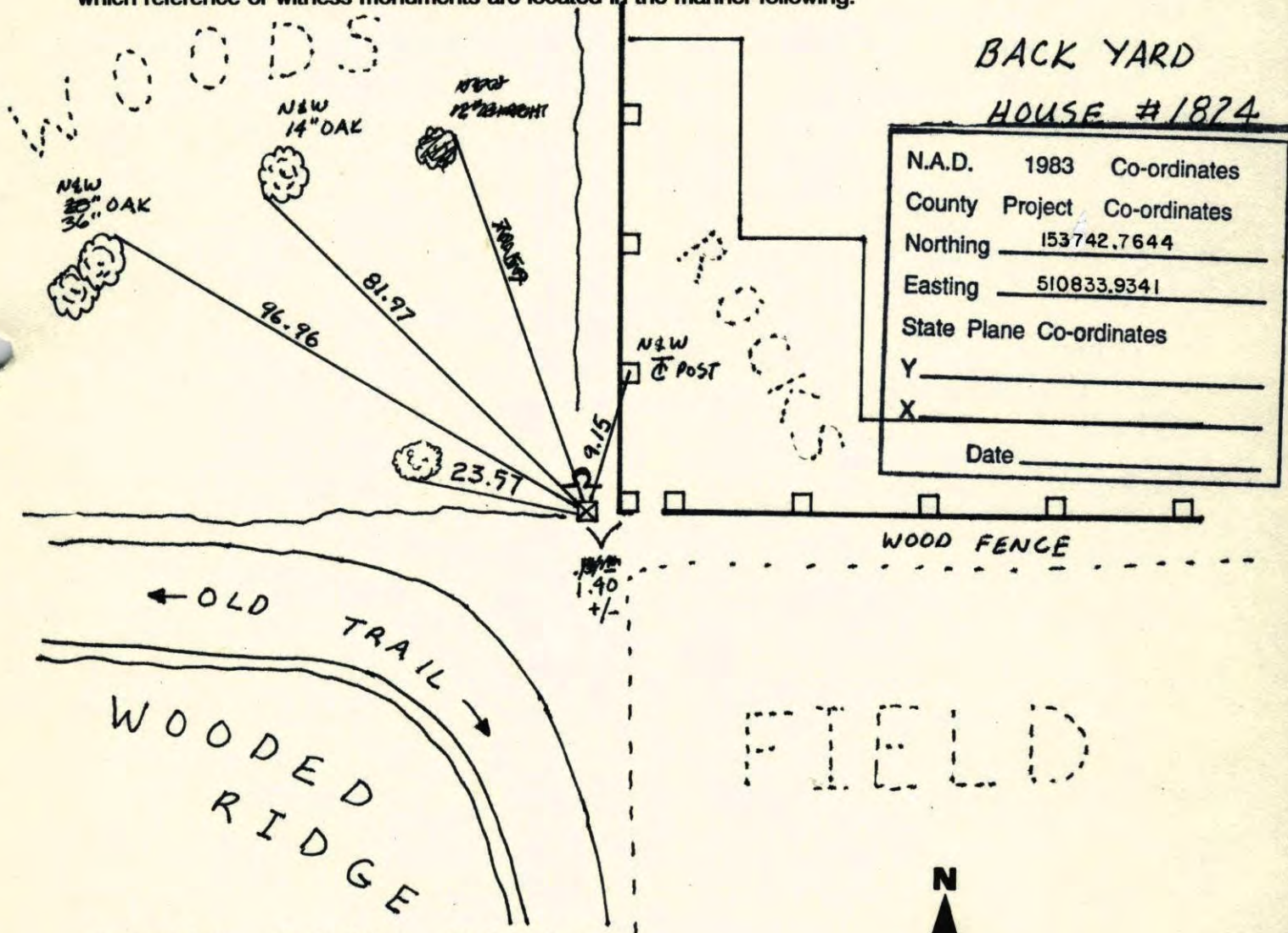
County of Anoka State of Minnesota

SOUTHWEST Corner of Sec. 9 Township 31 Range 23

I hereby certify that on the 18 day of JUNE, 1962, I found the described corner which was evidenced by GRANITE MONUMENT

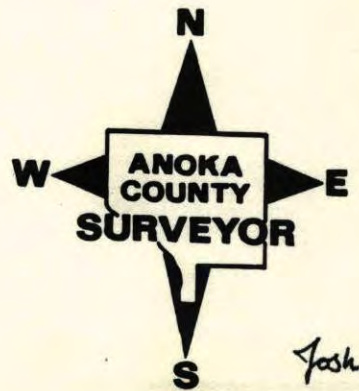
and I further certify that to perpetuate the location of said corner, I did, at the exact location thereof, place a permanent marker consisting of GRANITE MONUMENT ; SIGN AND POST
ON NORTH SIDE

which reference or witness monuments are located in the manner following:



N.A.D.	1983	Co-ordinates
County	Project	Co-ordinates
Northing	<u>153742.7644</u>	
Easting	<u>510833.9341</u>	
State Plane Co-ordinates		
Y	_____	
X	_____	
Date _____		

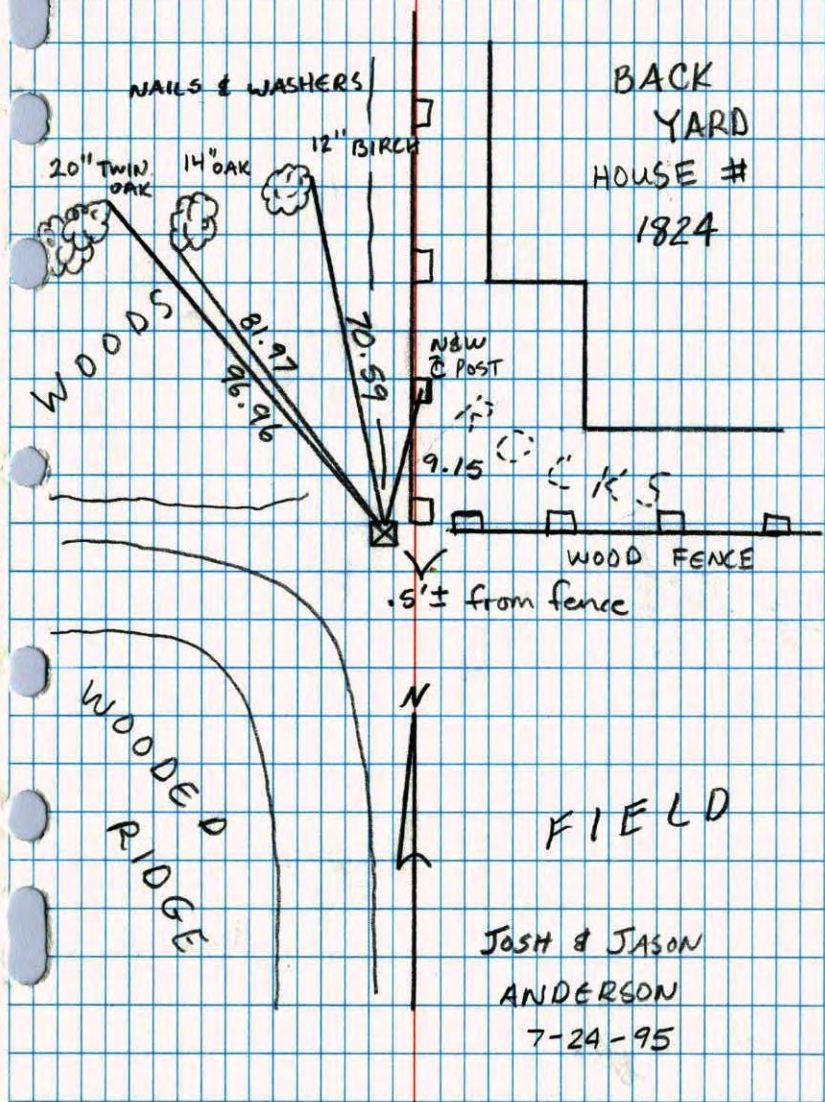
Revised date	Revised date	Revised date
<u>6-5-86</u>		
<u>8-1-90</u>		
<u>7-24-95</u>		
<u>11-9-98</u>		



Josh Anderson 95'

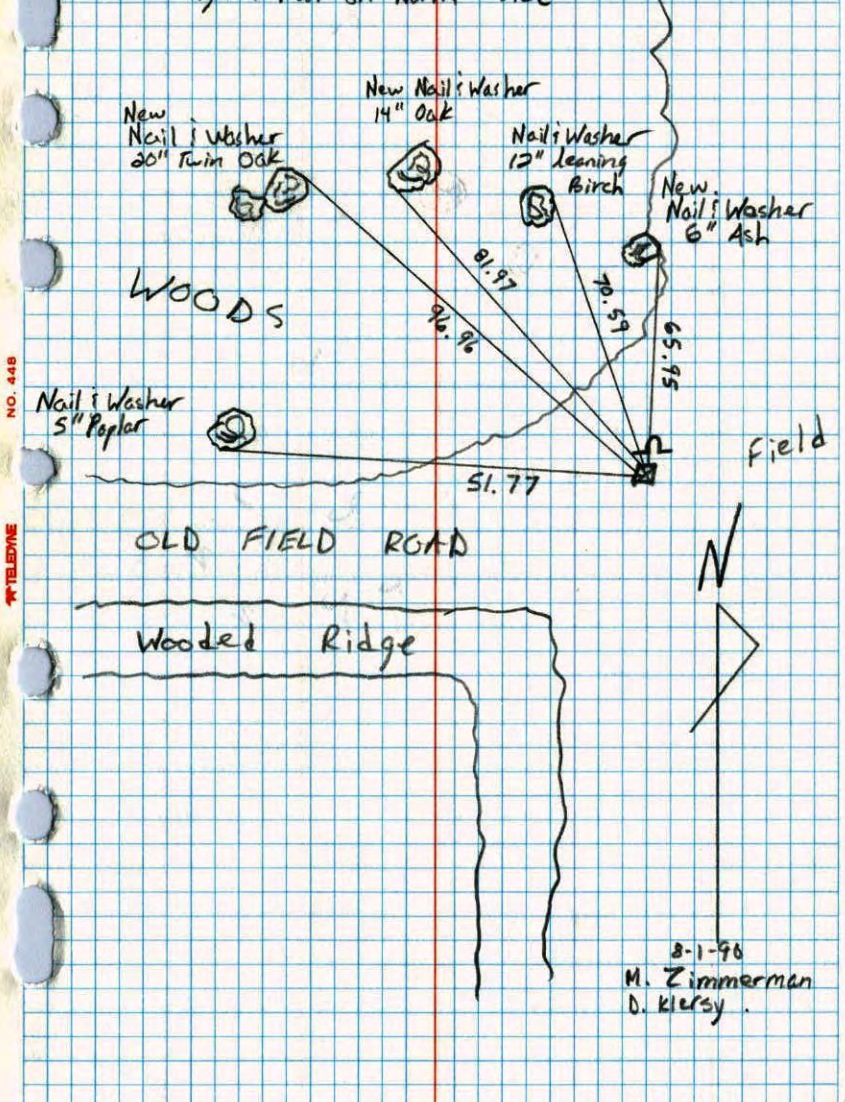
S.W. CORNER SEC. 9 TW. 31 R. 23

RETIE GRANITE MON.



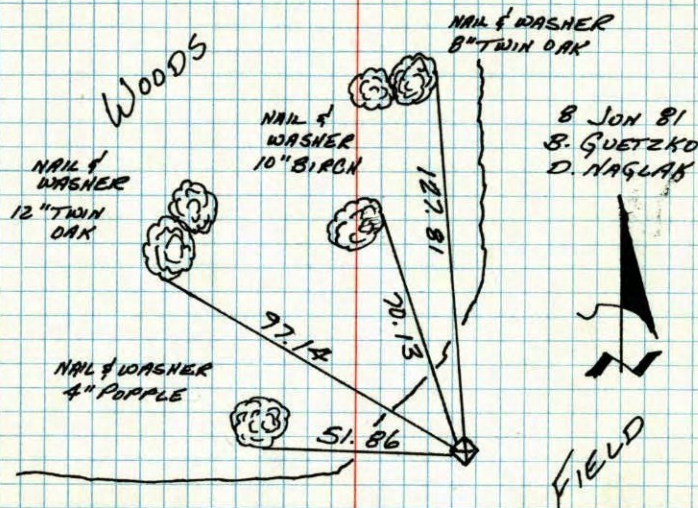
Southwest Corner Sec. 9 T31 R23

Retied Granite Monument and Put in Sign & Post on North Side



S.W. CORNER SECTION 9-T31-R23

RETIED 6" SQUARE GRANITE MONUMENT ^{RE} SET 18 JUN 62
 BY J. OLIVER. GRANITE SET ACCORDING TO CARTWRIGHT
 TIES. STEEL POST ON NORTH SIDE. $\frac{3}{4}$ " I.P. UNDER GRAN.



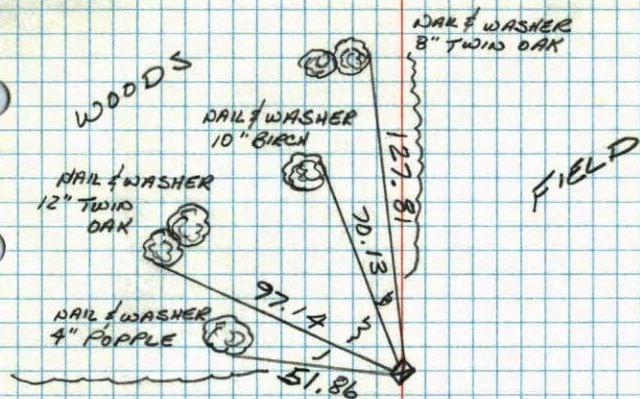
8 JUN 81
 B. GUETZKO
 D. NAGLAK

TEMPERATURE CORRECTED
 AND HORIZONTALLY
 TAPED MEASUREMENTS

ROLAND W. ANDERSON
 COUNTY SURVEYOR
 ANOKA COUNTY, MINNESOTA

SW CORNER SECTION 9-T31-R23

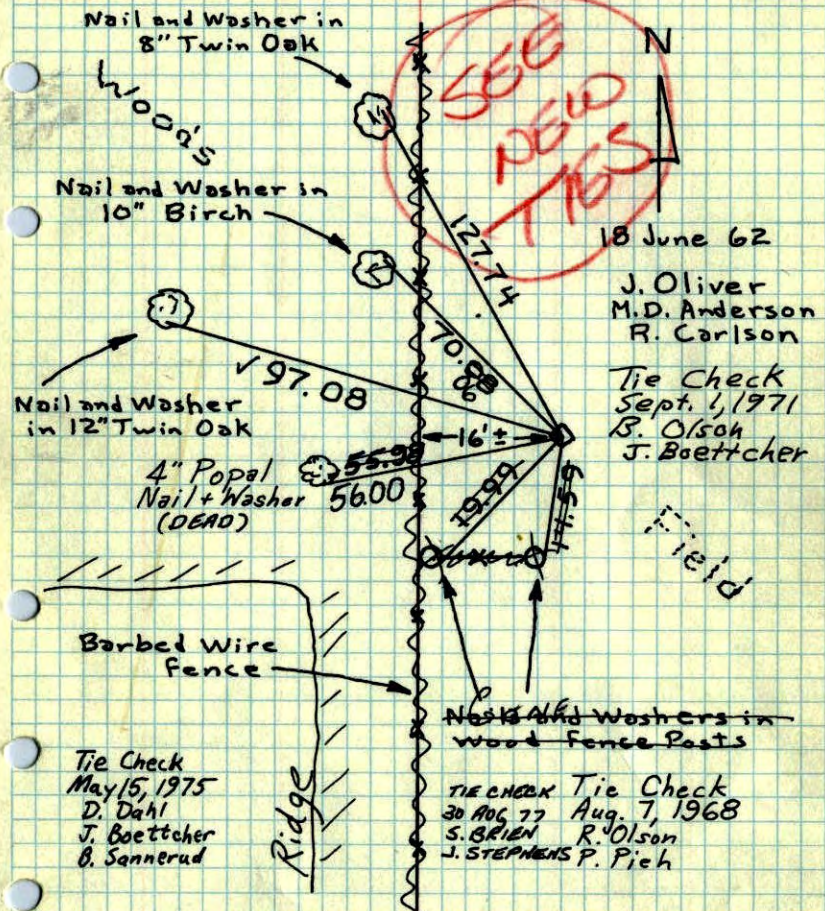
RETIED 6" SQUARE GRANITE MONUMENT SET
 18 JUNE 62 BY J. OLIVER. GRANITE SET
 ACCORDING TO CARTWRIGHT TIES. STEEL FENCE
 POST ON NORTH SIDE.



8 JUN 81
 B. GUETZKO
 D. NAGLAK
 TEMP 67°
 TAPE - 200'

SW Cor. Sec. 9 T31, R23

Set 6" Sq. Granite Mon. back in place according to Cartwright's ties - Set 3/4" I.P. under Granite. - Set Steel Fence post on No. Side.



18 June 62
 J. Oliver
 M.D. Anderson
 R. Carlson
 Tie Check
 Sept. 1, 1971
 B. Olson
 J. Boettcher

Tie Check
 May 15, 1975
 D. Dahl
 J. Boettcher
 B. Sannerud

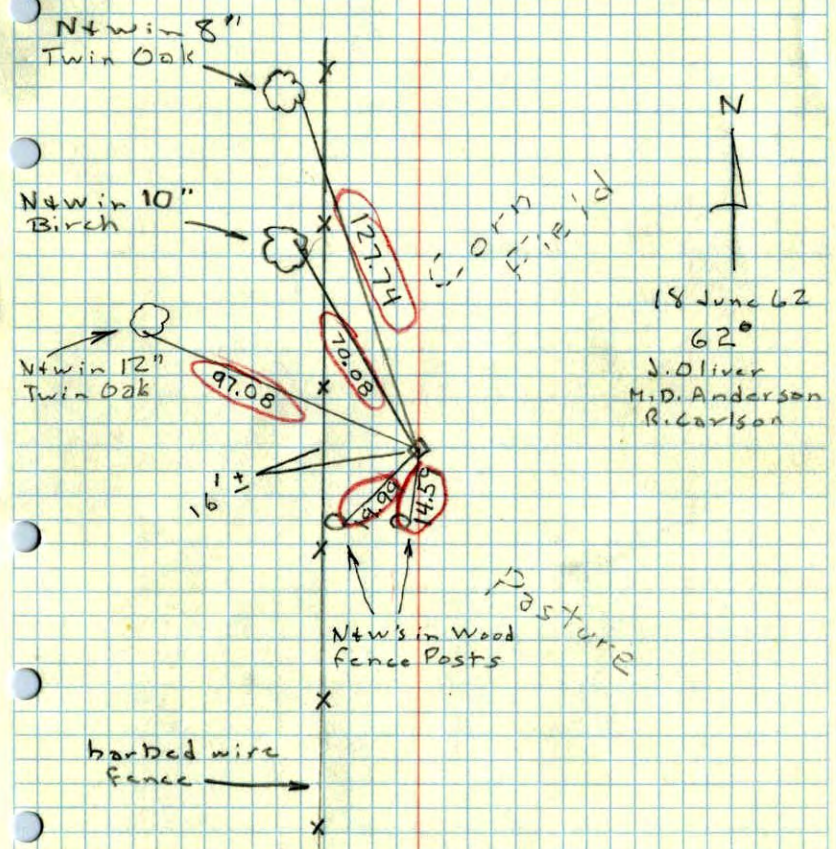
~~Nails and Washers in wood fence posts~~
 TIE CHECK Tie Check
 30 AUG 77 Aug. 7, 1968
 S. BRIEN R. OLSON
 J. STEPHENS P. PICH

ROLAND W. ANDERSON
 COUNTY SURVEYOR
 ANOKA COUNTY, MINNESOTA

TEMPERATURE CORRECTED
 AND HORIZONTALLY
 TAPED MEASUREMENTS

SW Cor. Sec. 9 - T31, R23

Set 6" Sq. Granite Mon. back in place according to tie by Cartwright - Set 3/4" I.P. under Gran. Set Steel Fence Post on No. Side - Set Granite to Cardinal Points



18 June 62
 62°
 J. Oliver
 M.D. Anderson
 R. Carlson

barbed wire fence