

CERTIFICATE OF LOCATION OF GOVERNMENT CORNER

County of Anoka

State of Minnesota

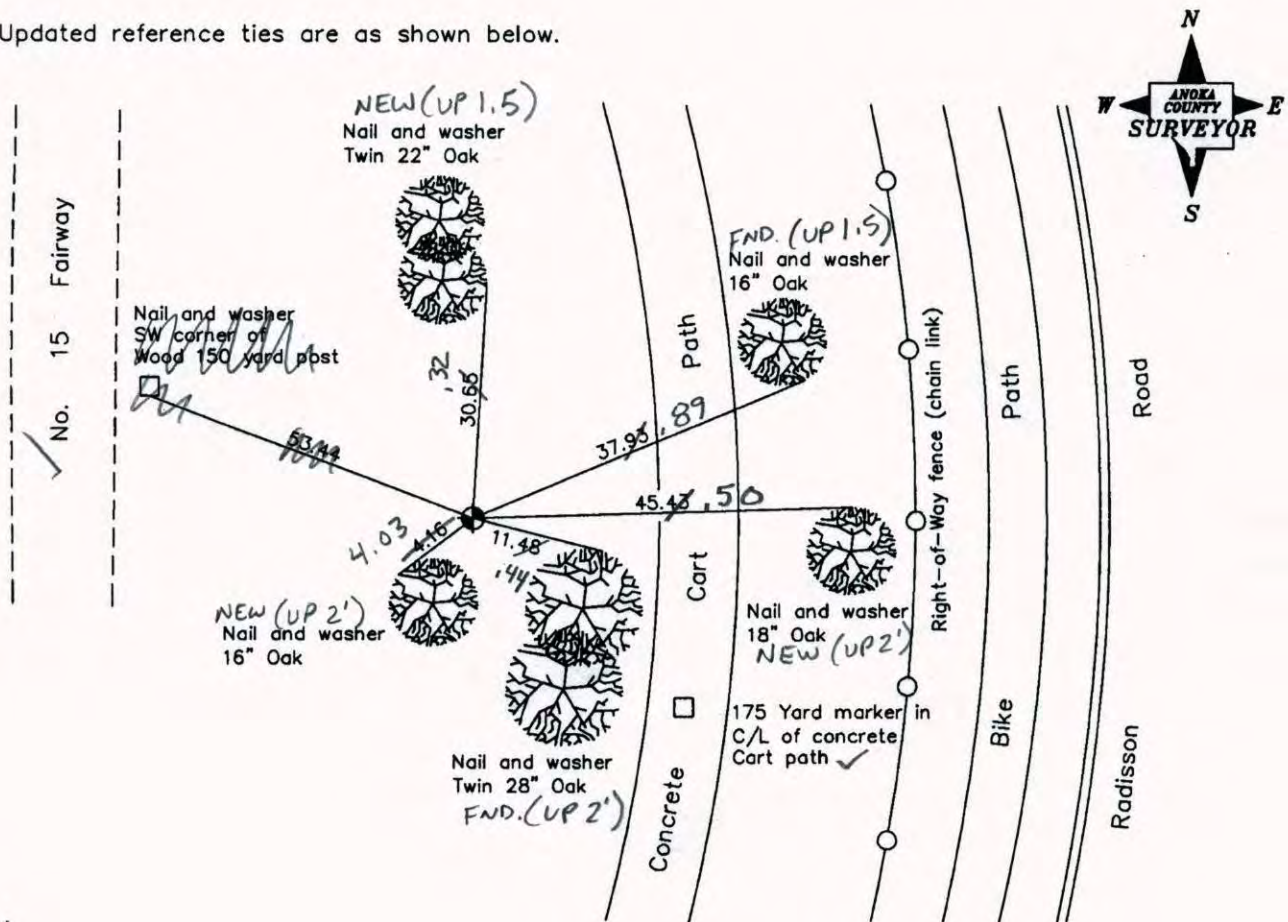
East 1/4 Corner of Sec. 16 Township 31 Range 23

On the 30th day of October, 1964, the described corner was evidenced by area resurvey

and to perpetuate the location of said corner, at the exact location thereof, a permanent marker was placed consisting of a cast iron monument

AND on the 10th day of July, 2006, said permanent marker was found and the ties were updated

Updated reference ties are as shown below.



7-30-14
BK-SS
TAPED

Revised date
7/31/95
10/27/98
7/10/06

N.A.D. 1983 Coordinates (1996 Adjustment)	
County Project Coordinates	
Northing	151059.4218
Easting	516065.5074
Date	10/27/98

I hereby certify that this United States public land survey monument record is correct and complete to the best of my knowledge and belief.

Larry D. Hoium Date 7/10/06

Larry D. Hoium, Anoka County Surveyor

Minnesota License Number 18165

CERTIFICATE OF LOCATION OF GOVERNMENT CORNER

County of Anoka

State of Minnesota

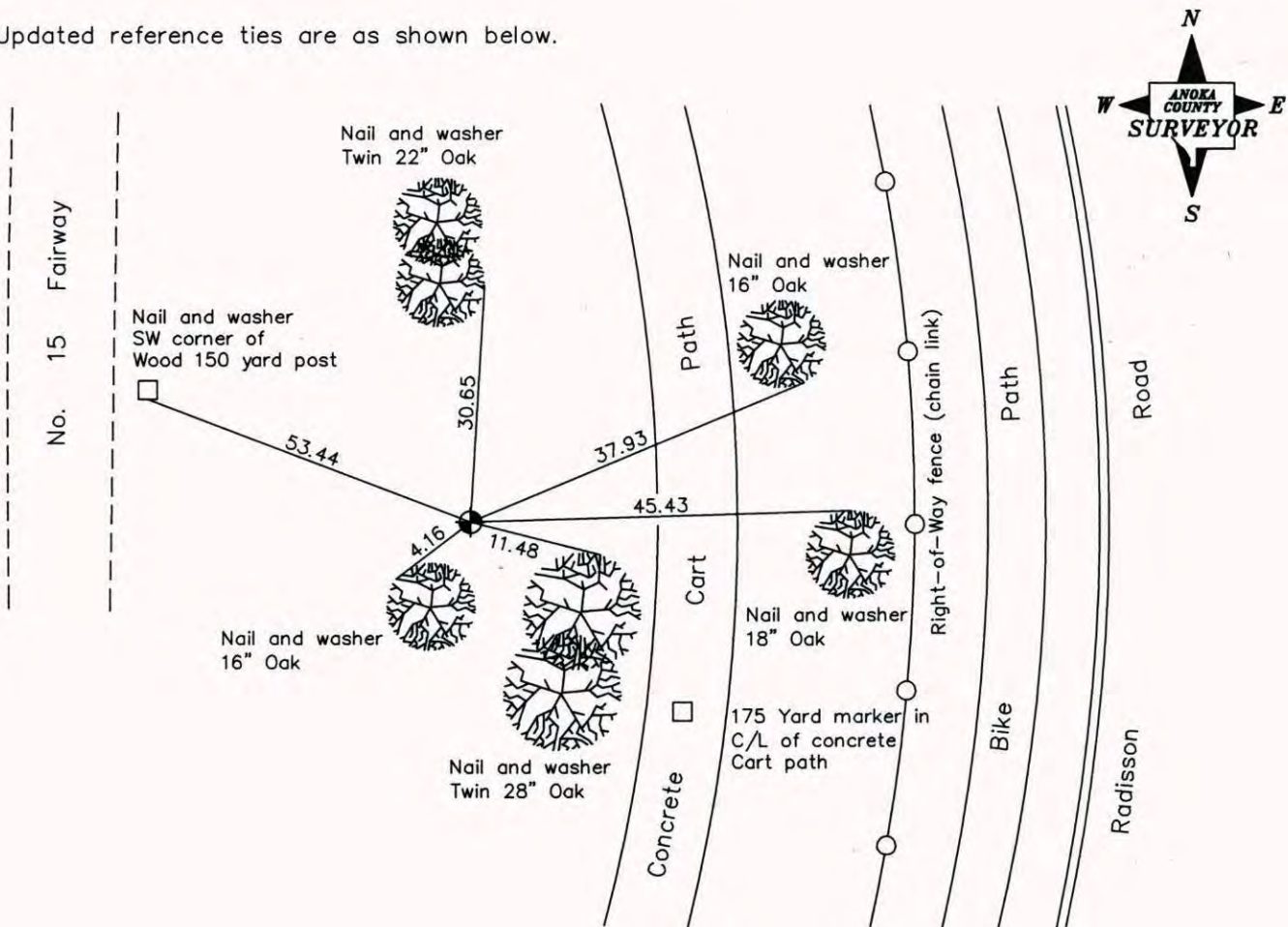
East 1/4 Corner of Sec. 16 Township 31 Range 23

On the 30th day of October, 1964, the described corner was evidenced by area resurvey

and to perpetuate the location of said corner, at the exact location thereof, a permanent marker was placed consisting of a cast iron monument

AND on the 10th day of July, 2006, said permanent marker was found and the ties were updated

Updated reference ties are as shown below.



Revised date
7/31/95
10/27/98
7/10/06

N.A.D. 1983 Coordinates (1996 Adjustment)	
County Project Coordinates	
Northing	151059.4218
Easting	516065.5074
Date	10/27/98

I hereby certify that this United States public land survey monument record is correct and complete to the best of my knowledge and belief.

Larry D. Hoium Date 7/10/06

Larry D. Hoium, Anoka County Surveyor

Minnesota License Number 18165

CERTIFICATE OF LOCATION OF GOVERNMENT CORNER

County of Anoka

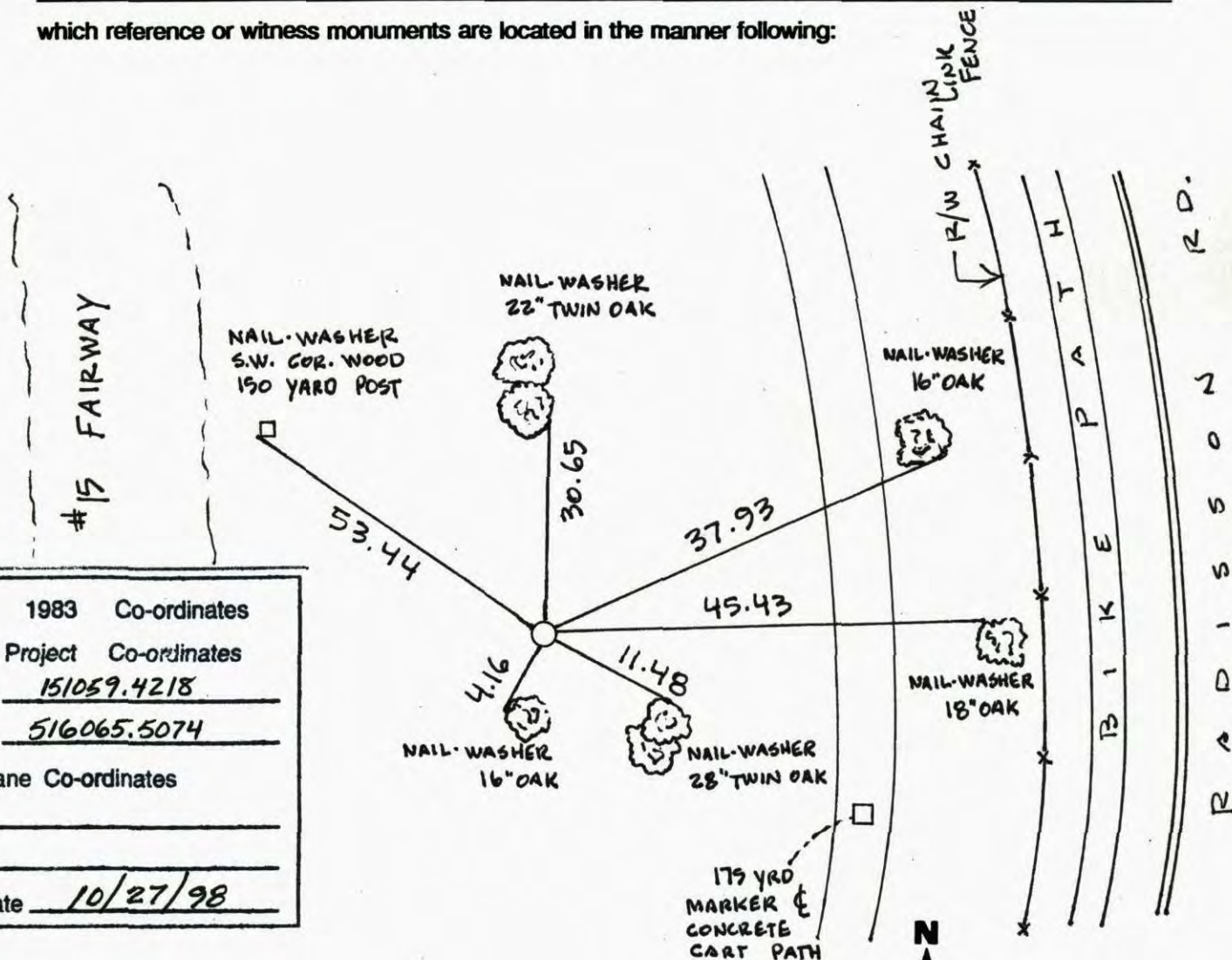
State of Minnesota

EAST 1/4 Corner of Sec. 16 Township 31 Range 23

I hereby certify that on the 30TH day of OCTOBER, 1964, I found the described corner which was evidenced by AREA RESURVEY

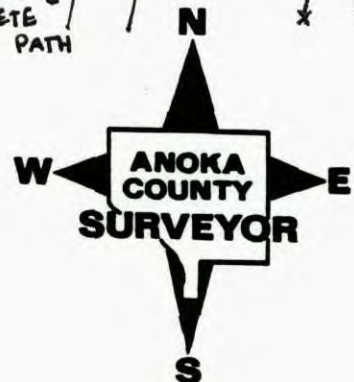
and I further certify that to perpetuate the location of said corner, I did, at the exact location thereof, place a permanent marker consisting of CAST IRON MONUMENT

which reference or witness monuments are located in the manner following:



N.A.D.	1983	Co-ordinates
County	Project	Co-ordinates
Northing	<u>151059.4218</u>	
Easting	<u>516065.5074</u>	
State Plane Co-ordinates		
Y	_____	
X	_____	
Date	<u>10/27/98</u>	

Revised date	Revised date	Revised date
7-31-95		
10-27-98		
7-10-06		



CERTIFICATE OF LOCATION OF GOVERNMENT CORNER

County of Anoka

State of Minnesota

EAST QTR. Corner of Sec. 16 Township 31 Range 23

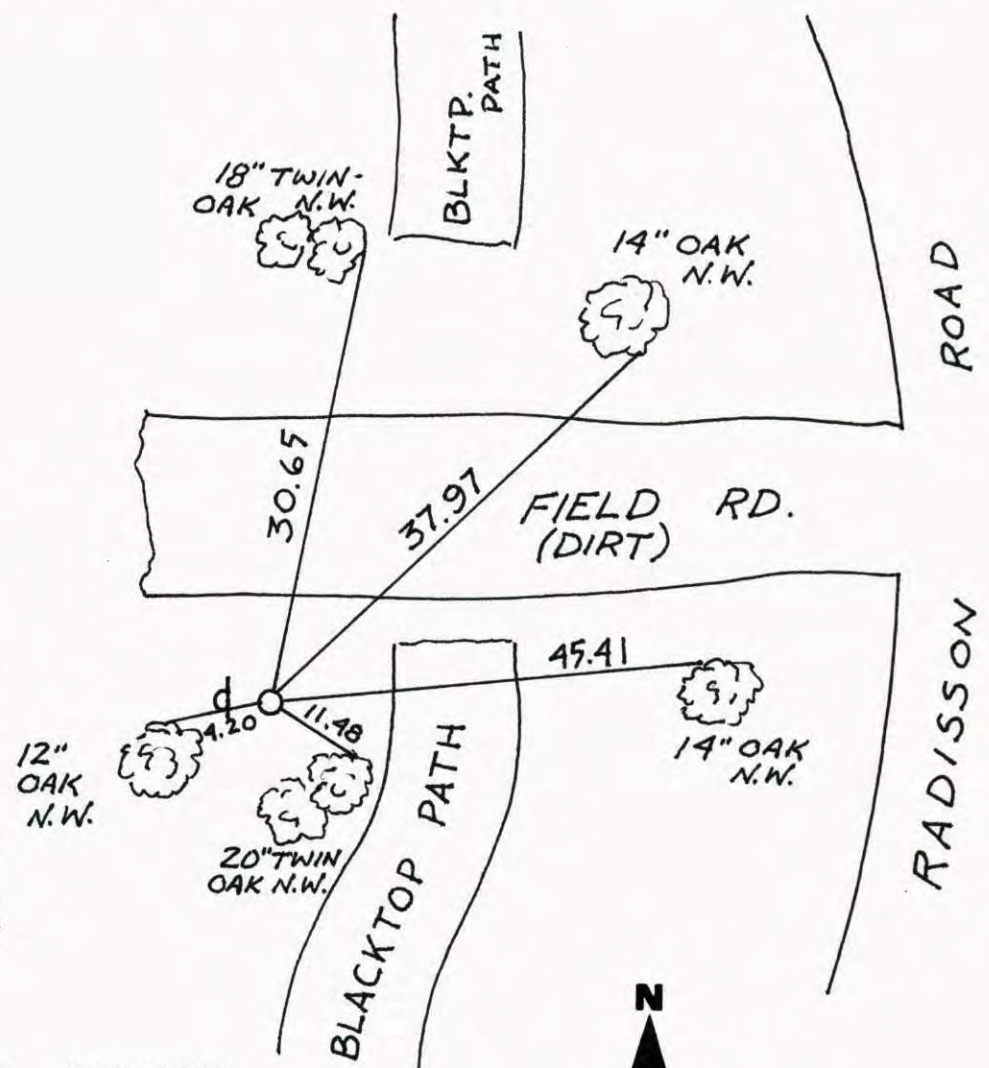
I hereby certify that on the 30 day of OCT., 1964, I found the described corner which was evidenced by AREA RESURVEY

and I further certify that to perpetuate the location of said corner, I did, at the exact location thereof, place a permanent marker consisting of CAST IRON MON; SIGN AND POST ON WEST SIDE

which reference or witness monuments are located in the manner following:

COURSE

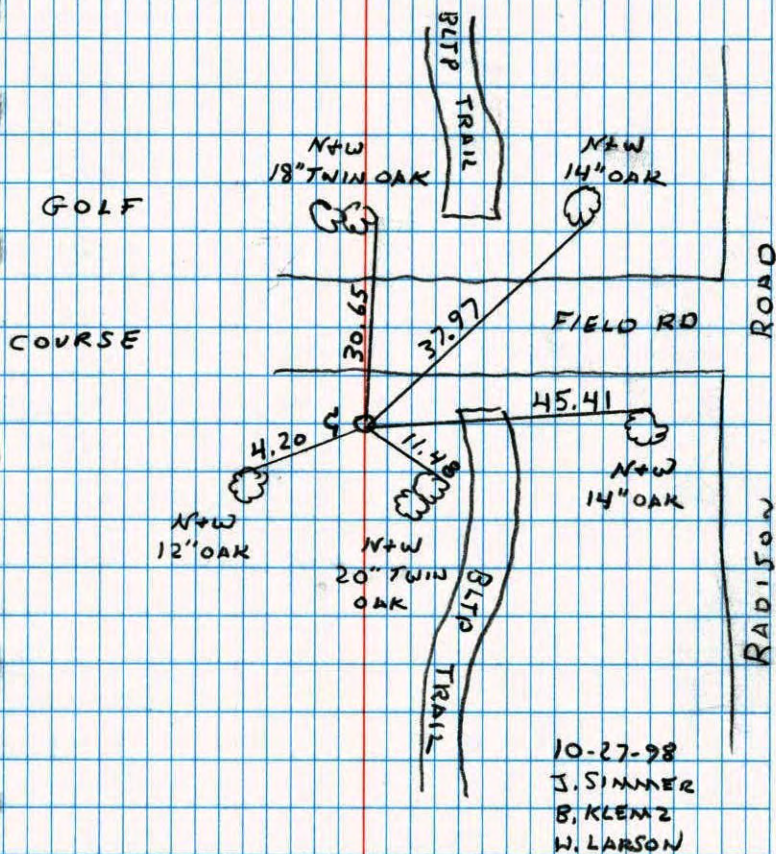
N.A.B.	1983	Co-ordinates
County Project		Co-ordinates
Northing	151059.4218	
Easting	516065.5074	
State Plane Co-ordinates		
Y		
X		
Date		



Revised date	Revised date	Revised date
7-31-95		
10-27-98		



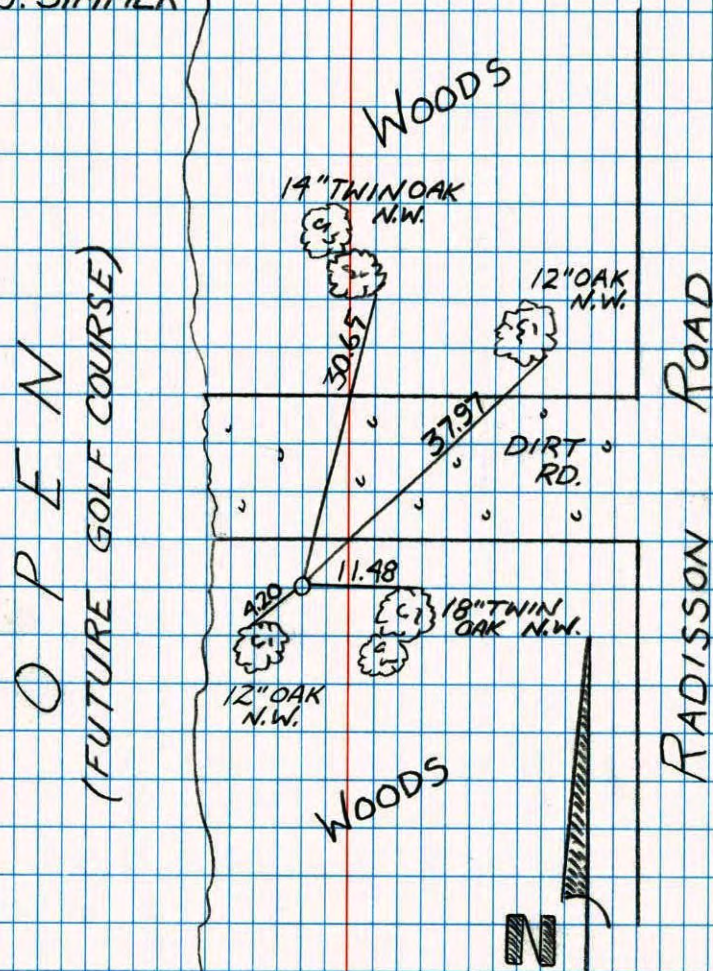
E 1/4 COR SEC 16 T31 R23

RETIED CAST IRON SIGN POST
ON WEST SIDENATIONAL PRINTFAST
NO. 446

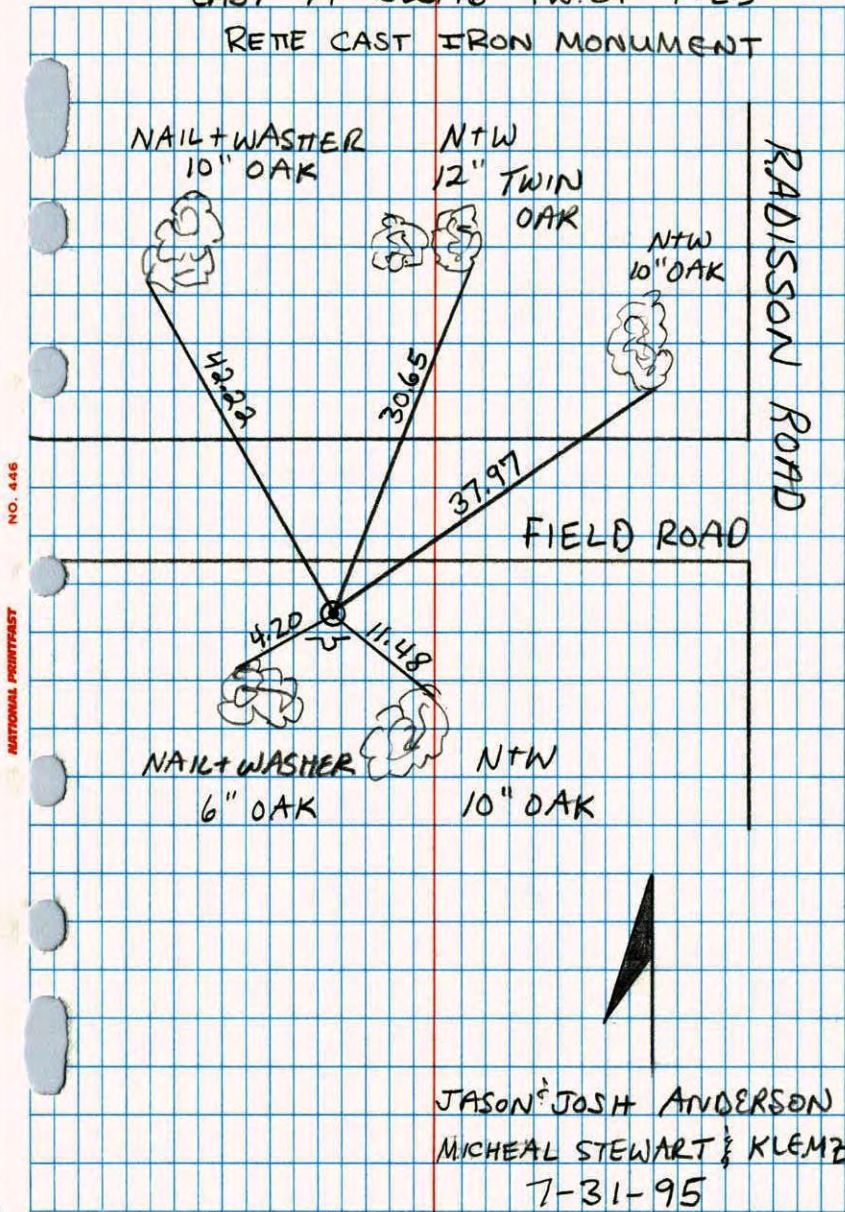
EAST QTR SEC. 16 T31 R23

RETIED CAST IRON MON.

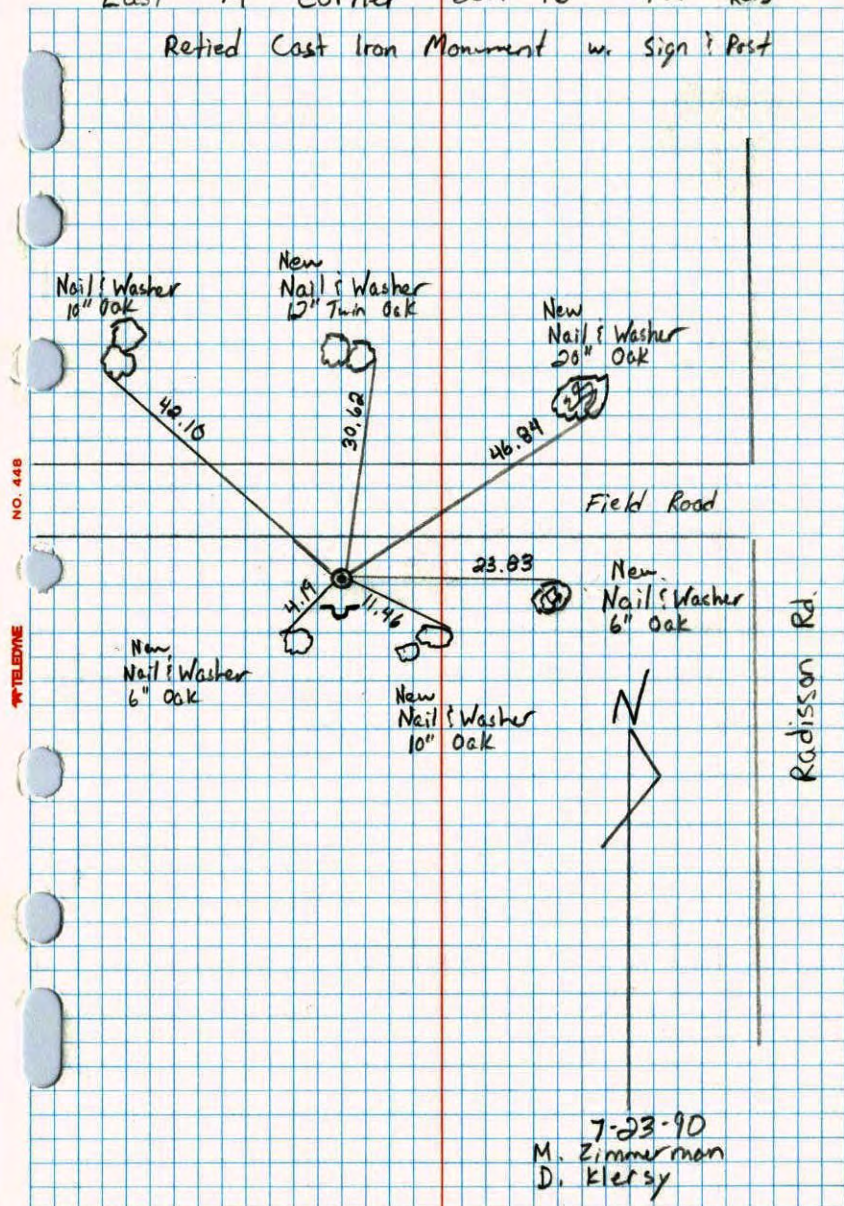
10-2-98

B. KLEMM
J. SIMMERNATIONAL PRINTFAST
NO. 446

EAST 1/4 SEC. 16 T.W. 31 R. 23
 RETIE CAST IRON MONUMENT

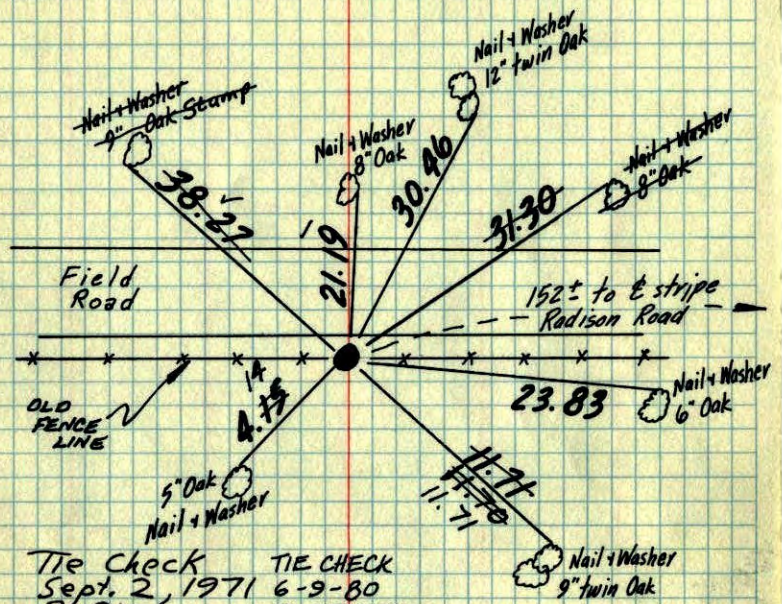


East 1/4 Corner Sec. 16 T31 R23
 Retied Cast Iron Monument w. Sign & Post



E 1/4 Cor. Sec. 16, T. 31, R. 23

Set Cast Iron Monument from resurvey. ~~Up~~ 0.1' DOWN



Tie Check
 Sept. 2, 1971
 R. Olson
 J. Boettcher

TIE CHECK
 6-9-80
 B. STEPHENS
 P. ROSS
 P. HORNBY

Tie Check
 May 15, 1975
 D. Dahl
 J. Boettcher
 B. Samnerud

TIE CHECK
 30 Aug 77
 S. BRIEN
 J. STEPHENS

Ties Checked
 Aug 7, 1968
 P. Pieh
 R. Olson

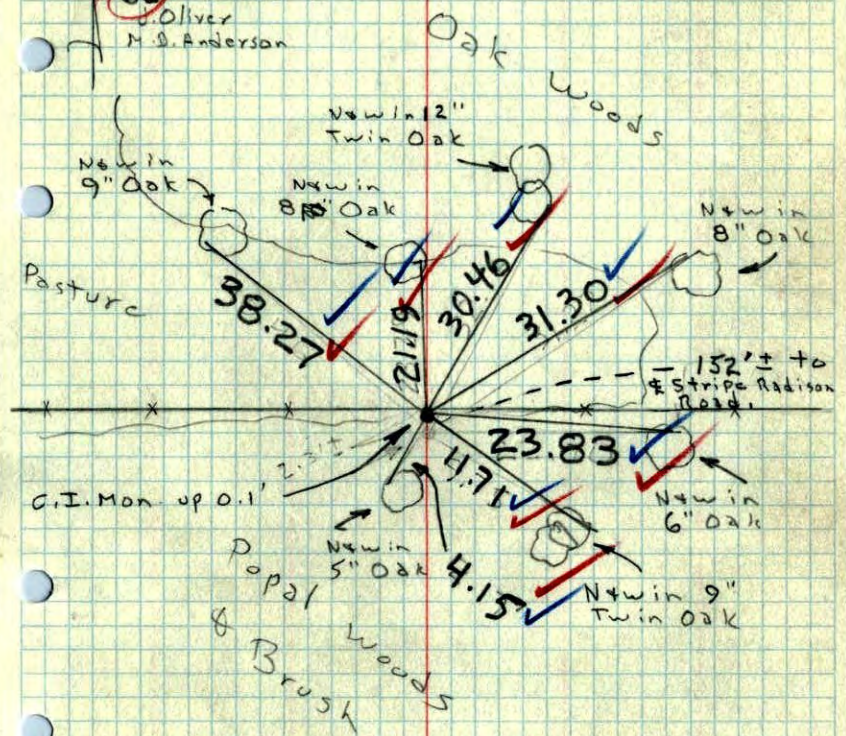
Oct. 30, 64
 J. Oliver
 M. D. Anderson

TEMPERATURE CORRECTED ROLAND W. ANDERSON
 AND HORIZONTALLY COUNTY SURVEYOR
 TAPED MEASUREMENTS ANOKA COUNTY, MINNESOTA

E 1/4 Cor. Sec. 16, T. 31, R. 23

Set Cast Iron Monument From resurvey.

Oct. 64
 #1
 J. Oliver
 M. D. Anderson



G.I. Mon up 0.1'

Popal & Brush Woods