

CERTIFICATE OF LOCATION OF GOVERNMENT CORNER

County of Anoka

State of Minnesota

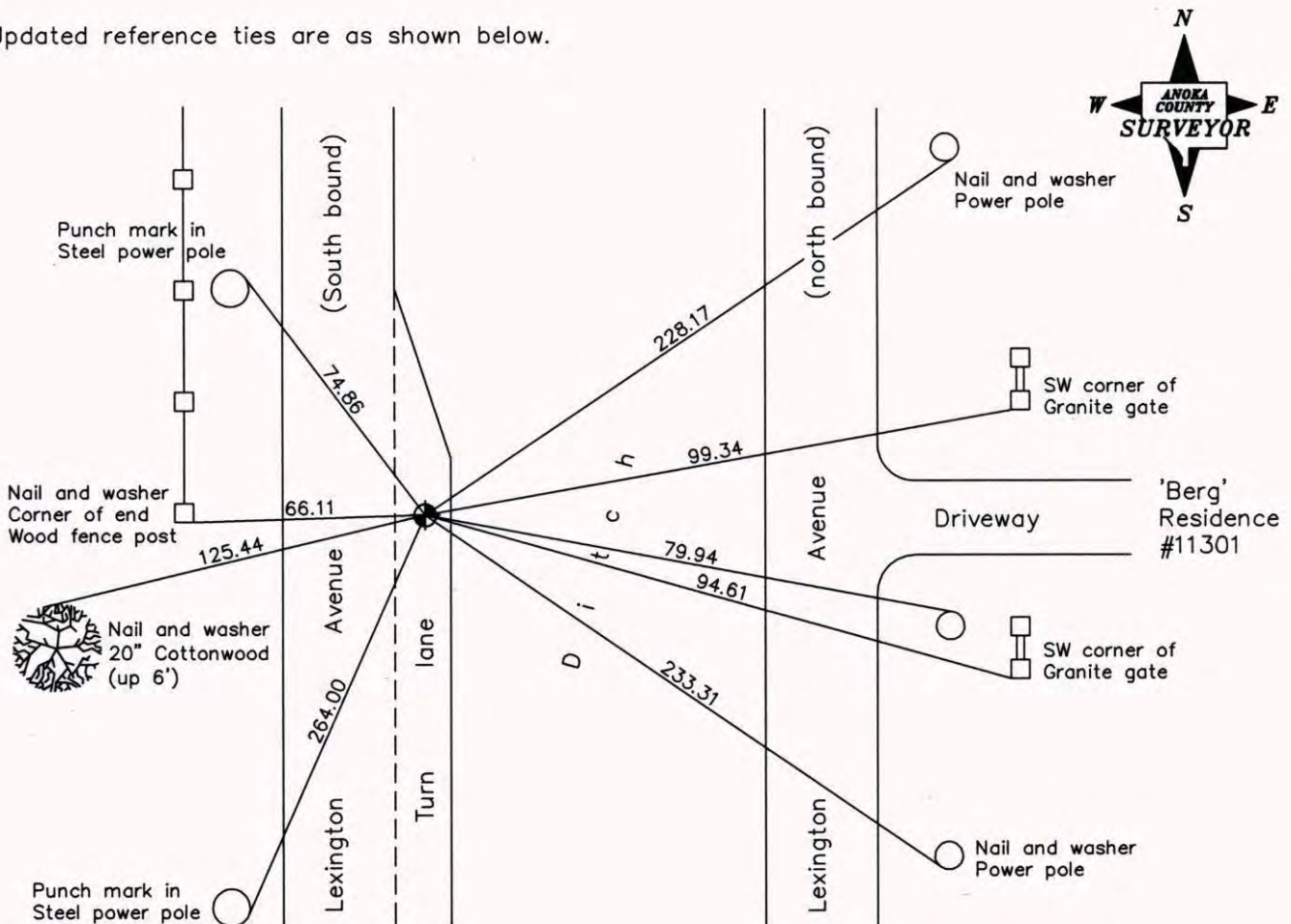
East 1/4 Corner of Sec. 14 Township 31 Range 23

On the 19th day of November, 1964, the described corner was evidenced by area resurvey

and to perpetuate the location of said corner, at the exact location thereof, a permanent marker was placed consisting of a cast iron monument

AND on the 17th day of October, 2005, said permanent marker was found and the ties were updated

Updated reference ties are as shown below.



Revised date

6/26/95
10/15/98
10/17/05

**N.A.D. 1983 Coordinates
(1996 Adjustment)**

County Project Coordinates	
Northing	150931.3726
Easting	526733.5315
Date	10/15/98

I hereby certify that this United States public land survey monument record is correct and complete to the best of my knowledge and belief.

Larry D. Hoium Date 10/17/05
 _____, Anoka County Surveyor
 Minnesota License Number 18165

CERTIFICATE OF LOCATION OF GOVERNMENT CORNER

County of Anoka

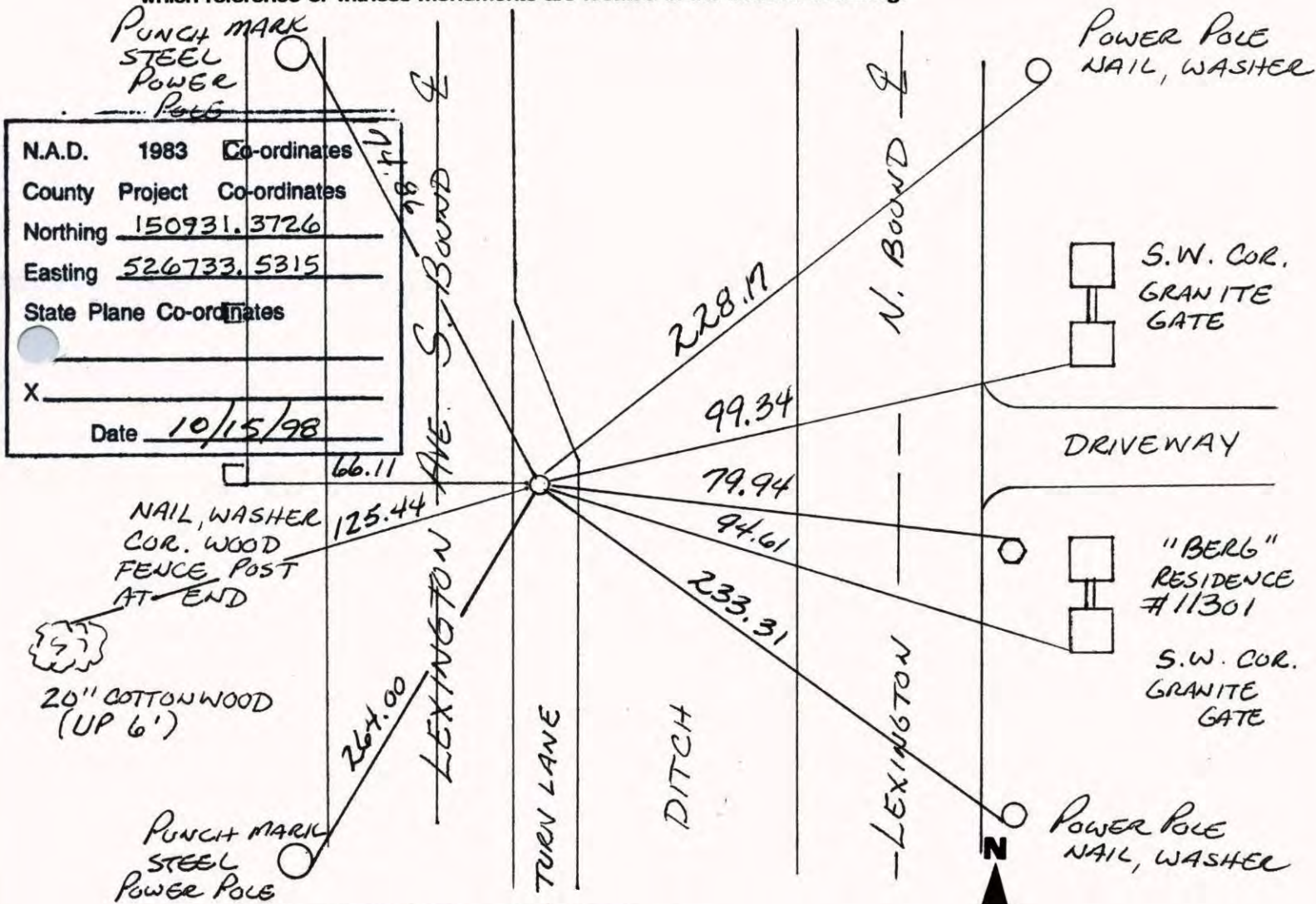
State of Minnesota

EAST 1/4 Corner of Sec. 14 Township 31 Range 23

I hereby certify that on the 19 day of Nov., 1964, I found the described corner which was evidenced by AREA RESURVEY

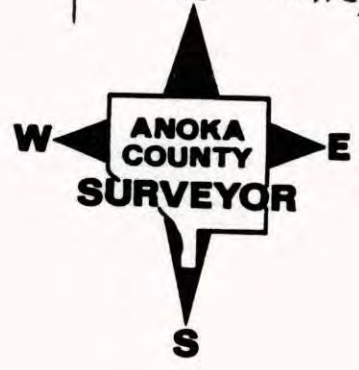
and I further certify that to perpetuate the location of said corner, I did, at the exact location thereof, place a permanent marker consisting of CAST IRON MONUMENT

which reference or witness monuments are located in the manner following:



N.A.D.	1983	Co-ordinates
County	Project	Co-ordinates
Northing	150931.3726	
Easting	526733.5315	
State Plane Co-ordinates		
X		
Date <u>10/15/98</u>		

Revised date	Revised date	Revised date
7-19-90		
6-26-95		
10-15-98		
10-17-05		



CERTIFICATE OF LOCATION OF GOVERNMENT CORNER

County of Anoka

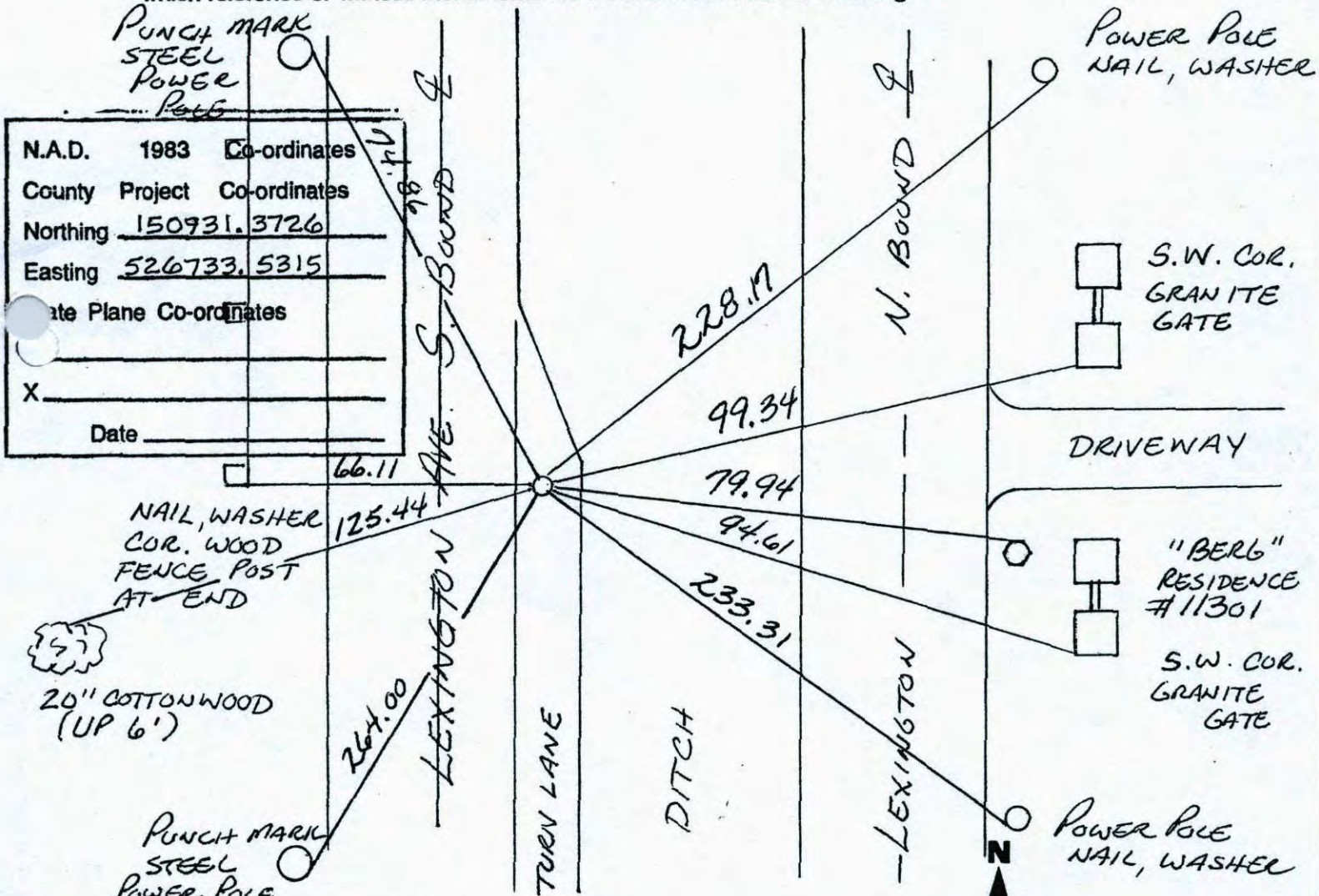
State of Minnesota

EAST 1/4 Corner of Sec. 14 Township 31 Range 23

I hereby certify that on the 19 day of Nov., 1967, I found the described corner which was evidenced by AREA RESURVEY

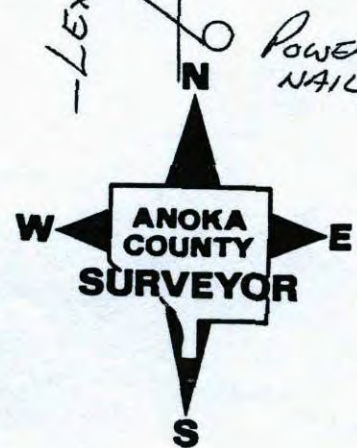
and I further certify that to perpetuate the location of said corner, I did, at the exact location thereof, place a permanent marker consisting of CAST IRON MONUMENT

which reference or witness monuments are located in the manner following:

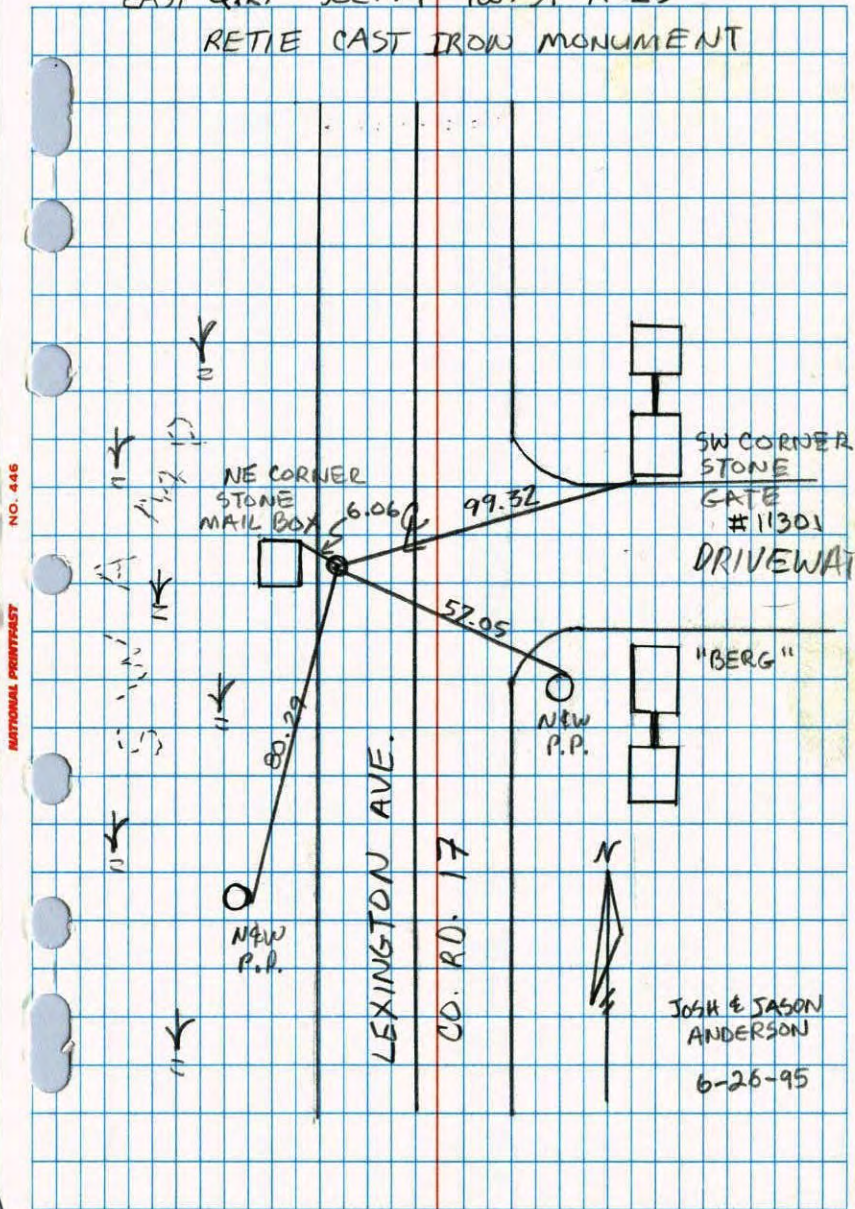


N.A.D.	1983	Co-ordinates
County	Project	Co-ordinates
Northing	150931.3726	
Easting	526733.5315	
State Plane Co-ordinates		
X		
Date		

Revised date	Revised date	Revised date
7-19-90		
6-26-95		
10-15-98		
10-17-05		

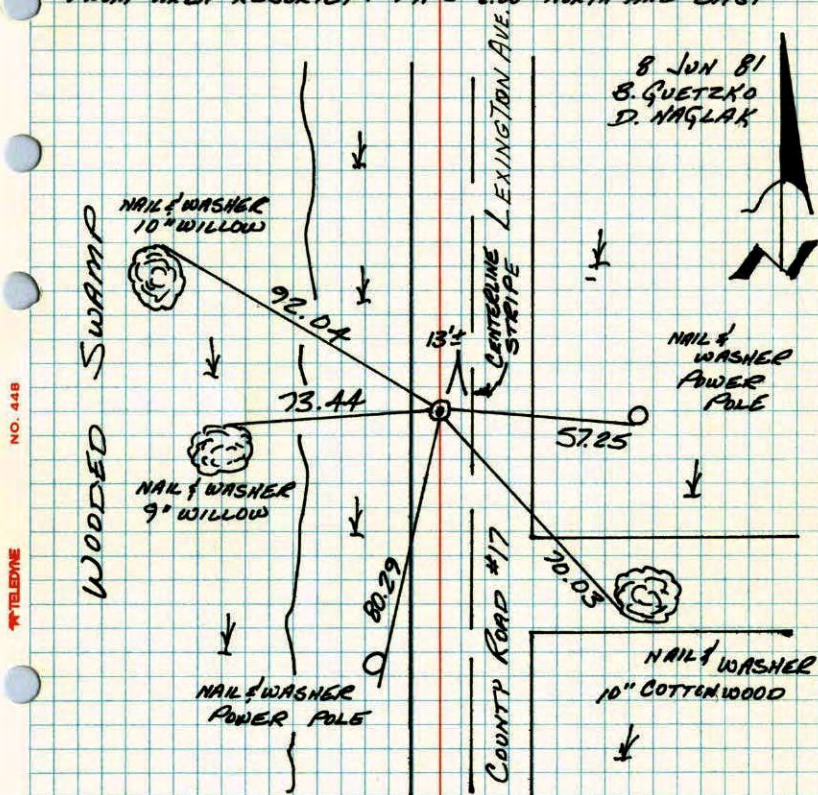


EAST QTR. SEC. 14 TW. 31 R. 23
 RETIE CAST IRON MONUMENT



E 1/4 CORNER SECTION 14-T31-R23

RETIED CAST IRON MONUMENT SET BY J. OLIVER, 19 NOV 64,
 FROM AREA RESURVEY. P.M.'S 2.00' NORTH AND EAST



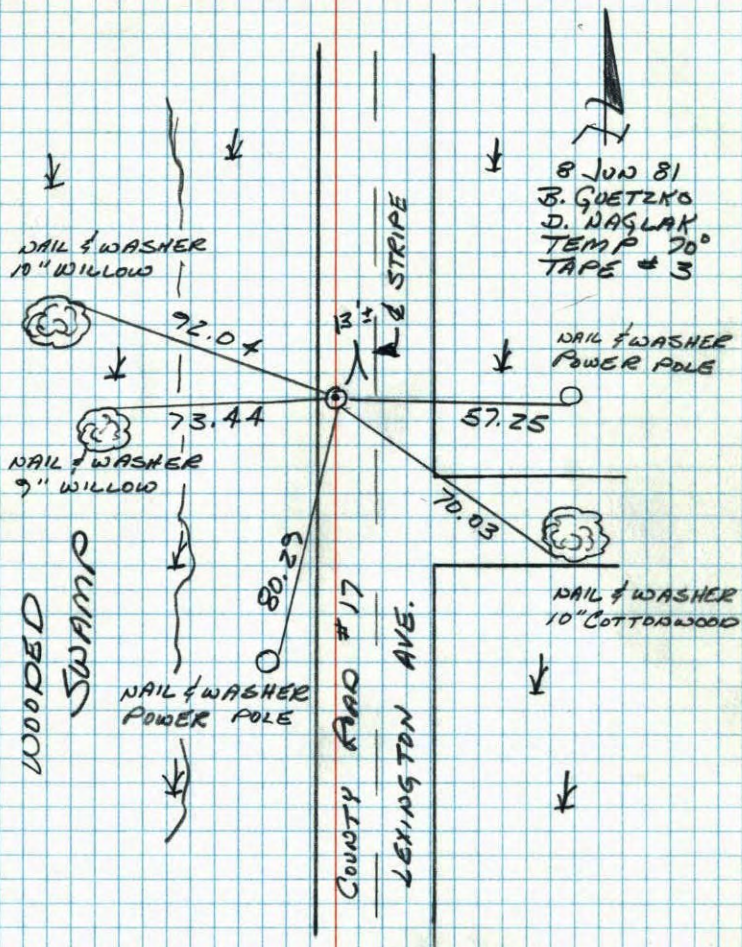
8 JUN 81
 B. QUETZKO
 D. NAGLAK

TEMPERATURE CORRECTED
 AND HORIZONTALLY
 TAPED MEASUREMENTS

ROLAND W. ANDERSON
 COUNTY SURVEYOR
 ANOKA COUNTY, MINNESOTA

E 1/4 CORNER SECTION 14 - T31 - R23

RETIRED CAST IRON MONUMENT SET BY
J. OLIVER, 19 NOV 64, FROM AREA RESURVEY
PK'S 2.00' NORTH AND EAST.



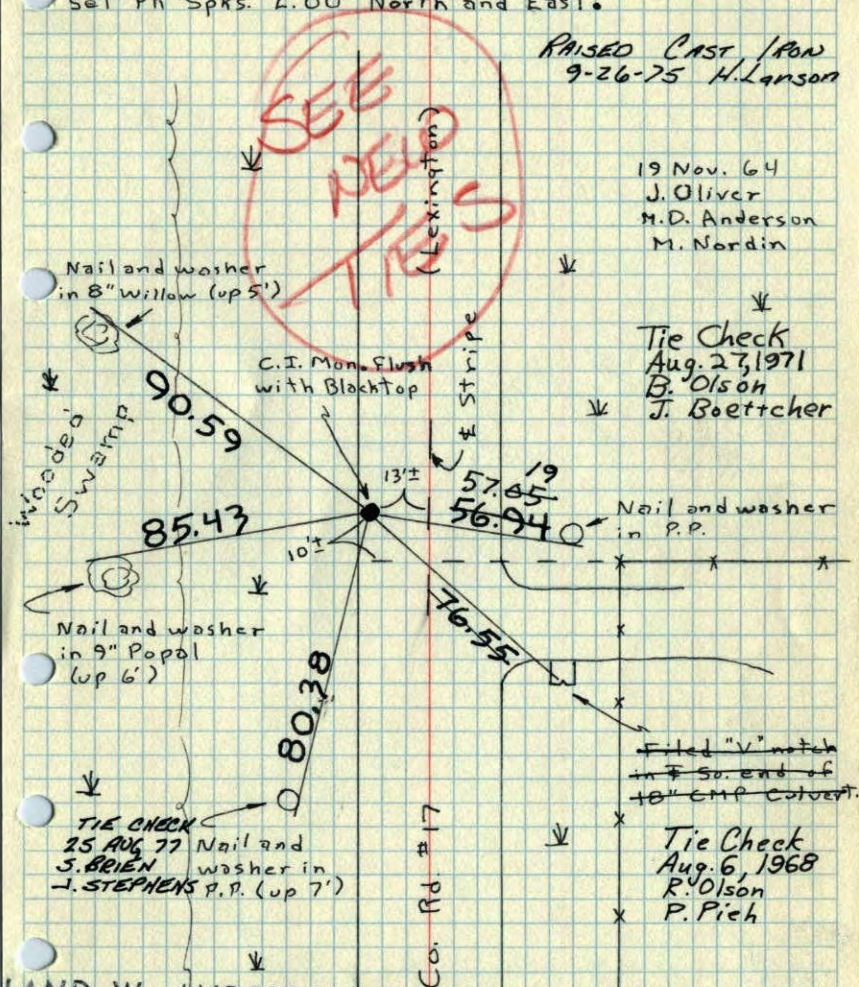
NO. 458

TELETYPE

E 1/4 Cor. Sec. 14, T31, R23

Set Cast Iron Monument from Resurvey. Also
set PK Sps. 2.00' North and East.

RAISED CAST IRON
9-26-75 H. Lanson



LAND W. ANDERSON
COUNTY SURVEYOR
NOKA COUNTY, MINNESOTA

TEMPERATURE CORRECTED
AND HORIZONTALLY
TAPED MEASUREMENTS

E 1/4 Cor. Sec. 14, T 31, R 23

Set Cast Iron Monument from Resurvey.

Set PK Spls 2.00' North and East.

