

# CERTIFICATE OF LOCATION OF GOVERNMENT CORNER

County of Anoka

State of Minnesota

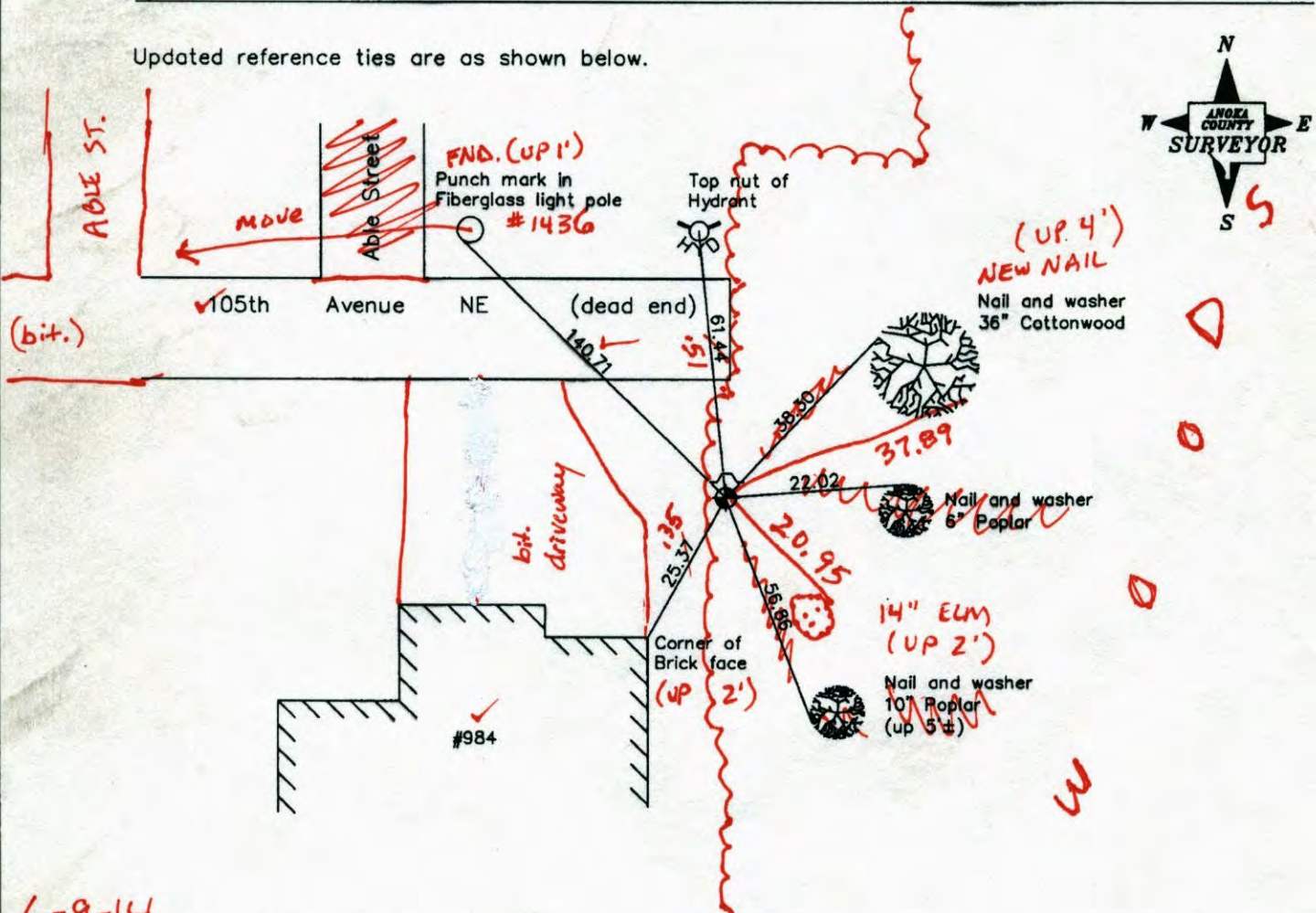
East 1/4 Corner of Sec. 19 Township 31 Range 23

On the 5th day of July, 1977, the described corner was evidenced by area resurvey

and to perpetuate the location of said corner, at the exact location thereof, a permanent marker was placed consisting of a cast iron monument with a sign and post on the north side

AND on the 5th day of November, 2001, said permanent marker was found and the ties were updated

Updated reference ties are as shown below.



6-9-14  
BK-SS  
TAPED

Revised date
7/27/95
12/10/98
11/05/01

N.A.D. 1983 Coordinates (1996 Adjustment)	
County Project Coordinates	
Northing	145807.9917
Easting	505410.1579
Date	12/10/98

I hereby certify that this United States public land survey monument record is correct and complete to the best of my knowledge and belief.

*Larry D. Hoium* Date 11/05/01

Larry D. Hoium, Anoka County Surveyor

Minnesota License Number 18165

# CERTIFICATE OF LOCATION OF GOVERNMENT CORNER

County of Anoka

State of Minnesota

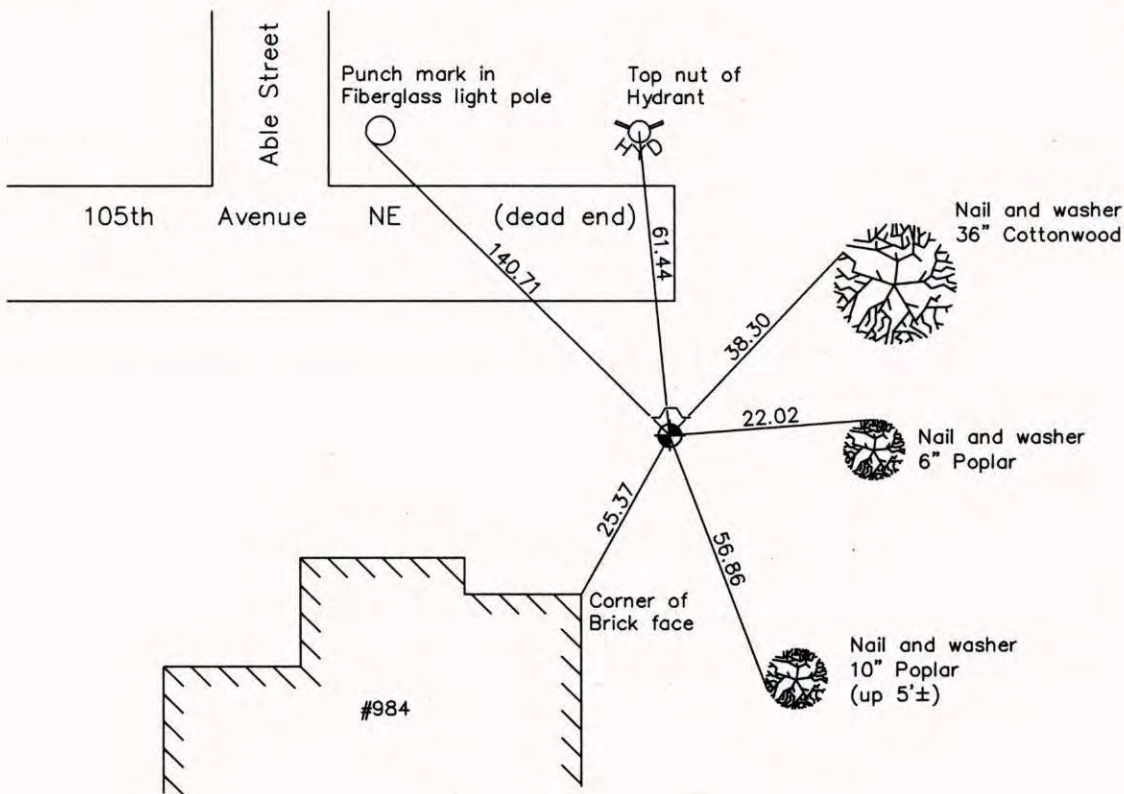
East 1/4 Corner of Sec. 19 Township 31 Range 23

On the 5th day of July, 1977, the described corner was evidenced by area resurvey

and to perpetuate the location of said corner, at the exact location thereof, a permanent marker was placed consisting of a cast iron monument with a sign and post on the north side

AND on the 5th day of November, 2001, said permanent marker was found and the ties were updated

Updated reference ties are as shown below.



**Revised date**

7/27/95
12/10/98
11/05/01

**N.A.D. 1983 Coordinates  
(1996 Adjustment)**

County Project Coordinates	
Northing	145807.9917
Easting	505410.1579
Date	12/10/98

I hereby certify that this United States public land survey monument record is correct and complete to the best of my knowledge and belief.

Larry D. Hoium

Date 11/05/01  
 \_\_\_\_\_, Anoka County Surveyor  
 Minnesota License Number 18165

# CERTIFICATE OF LOCATION OF GOVERNMENT CORNER

County of Anoka

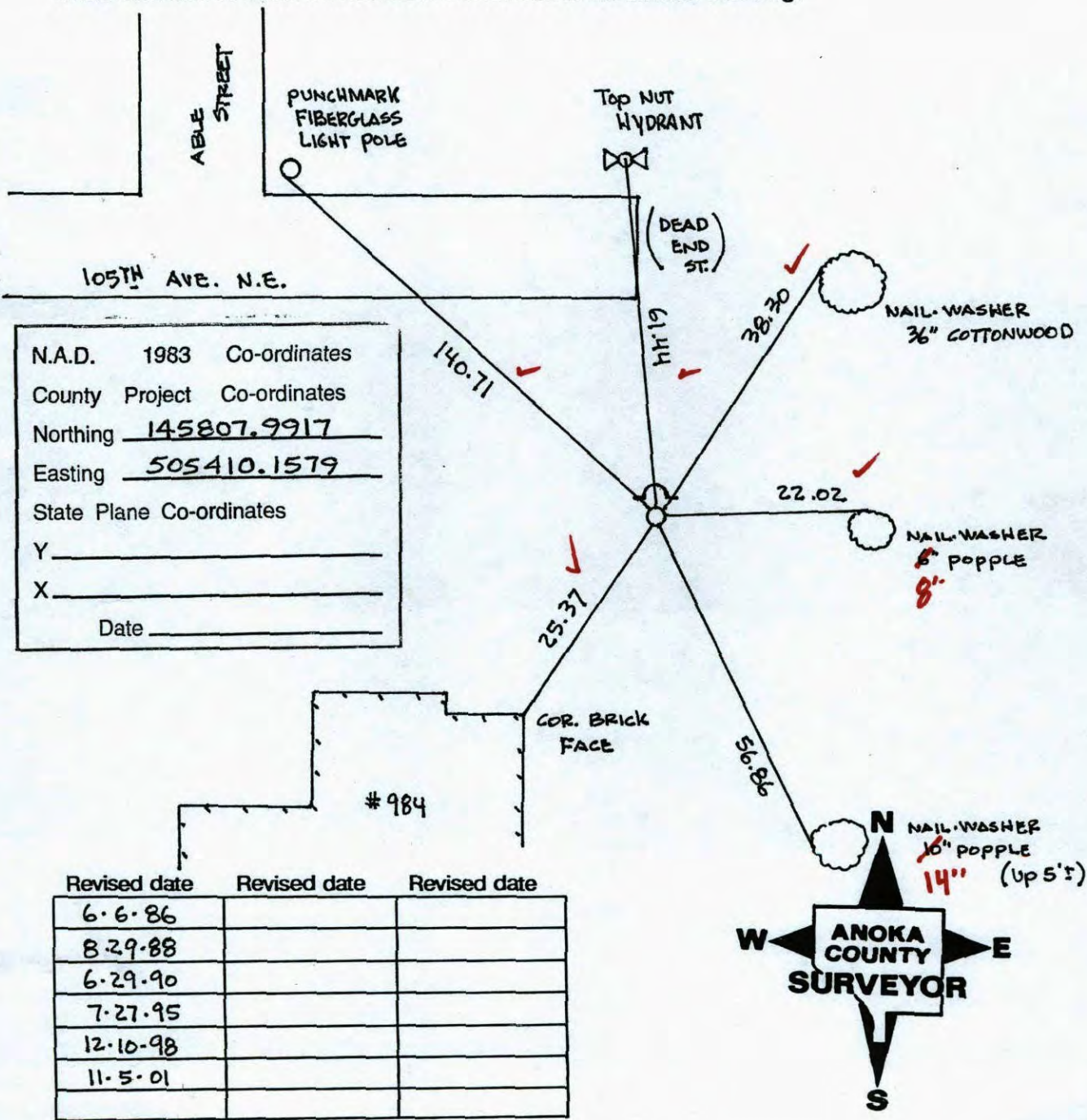
State of Minnesota

EAST  $\frac{1}{4}$  Corner of Sec. 19 Township 31 Range 23

I hereby certify that on the 5<sup>TH</sup> day of July, 1977, I found the described corner which was evidenced by AREA RESURVEY

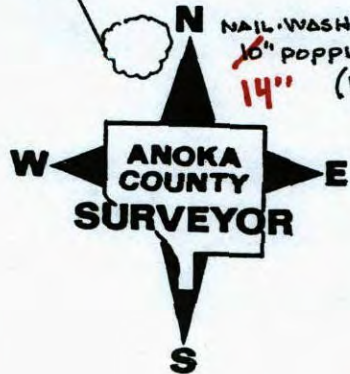
and I further certify that to perpetuate the location of said corner, I did, at the exact location thereof, place a permanent marker consisting of CAST IRON MONUMENT WITH SIGN AND POST ON NORTH SIDE

which reference or witness monuments are located in the manner following:



N.A.D.	1983	Co-ordinates
County Project		Co-ordinates
Northing	145807.9917	
Easting	505410.1579	
State Plane Co-ordinates		
Y		
X		
Date		

Revised date	Revised date	Revised date
6-6-86		
8-29-88		
6-29-90		
7-27-95		
12-10-98		
11-5-01		



# CERTIFICATE OF LOCATION OF GOVERNMENT CORNER

County of Anoka

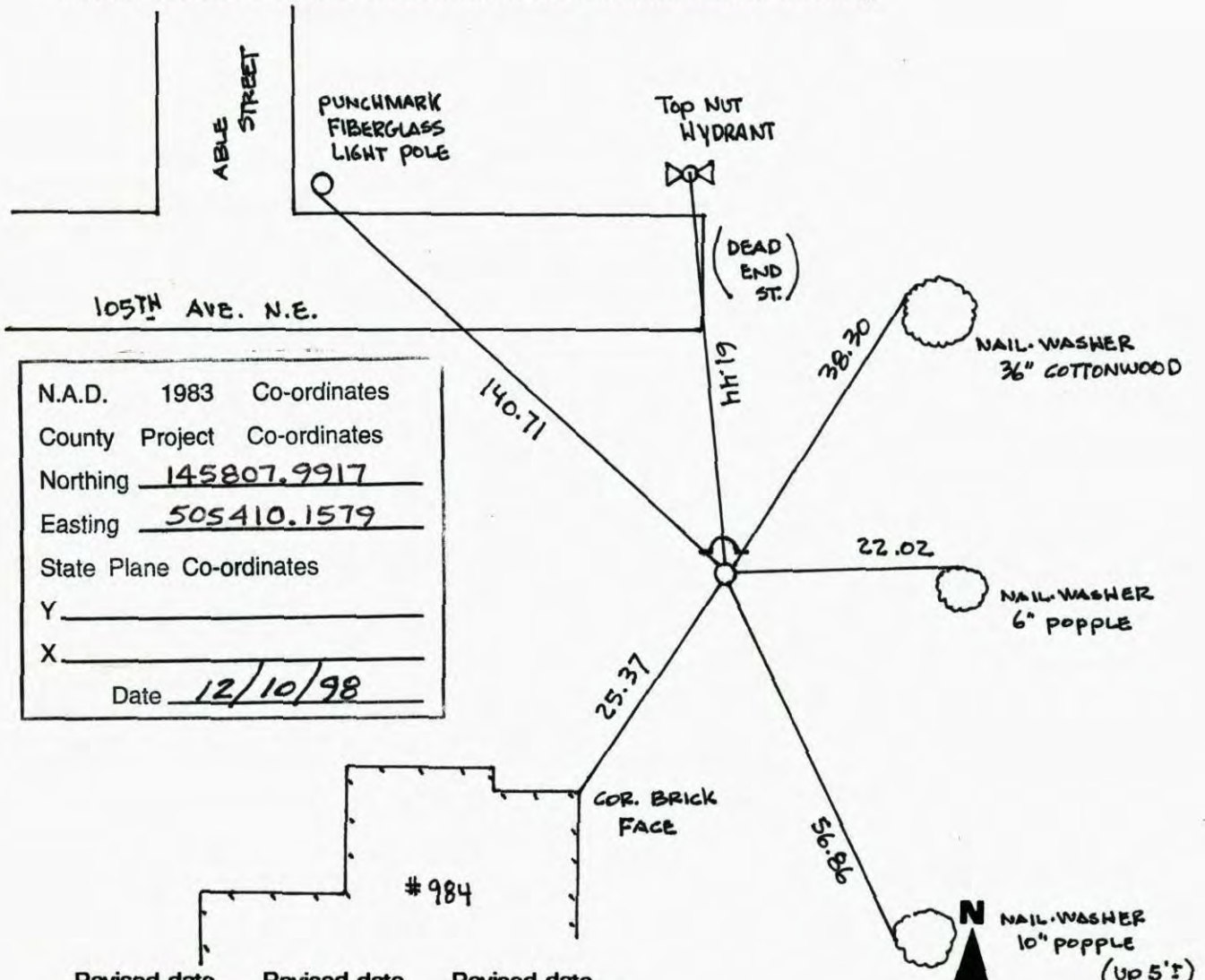
State of Minnesota

EAST 1/4 Corner of Sec. 19 Township 31 Range 23

I hereby certify that on the 5<sup>TH</sup> day of July, 1977, I found the described corner which was evidenced by AREA RESURVEY

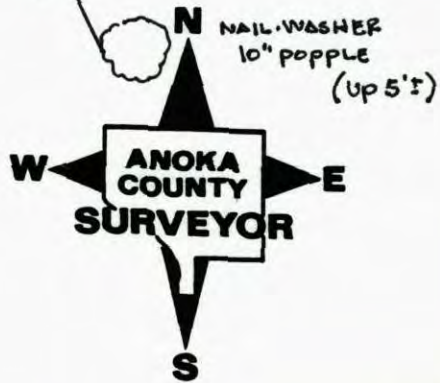
and I further certify that to perpetuate the location of said corner, I did, at the exact location thereof, place a permanent marker consisting of CAST IRON MONUMENT WITH SIGN AND POST ON NORTH SIDE

which reference or witness monuments are located in the manner following:

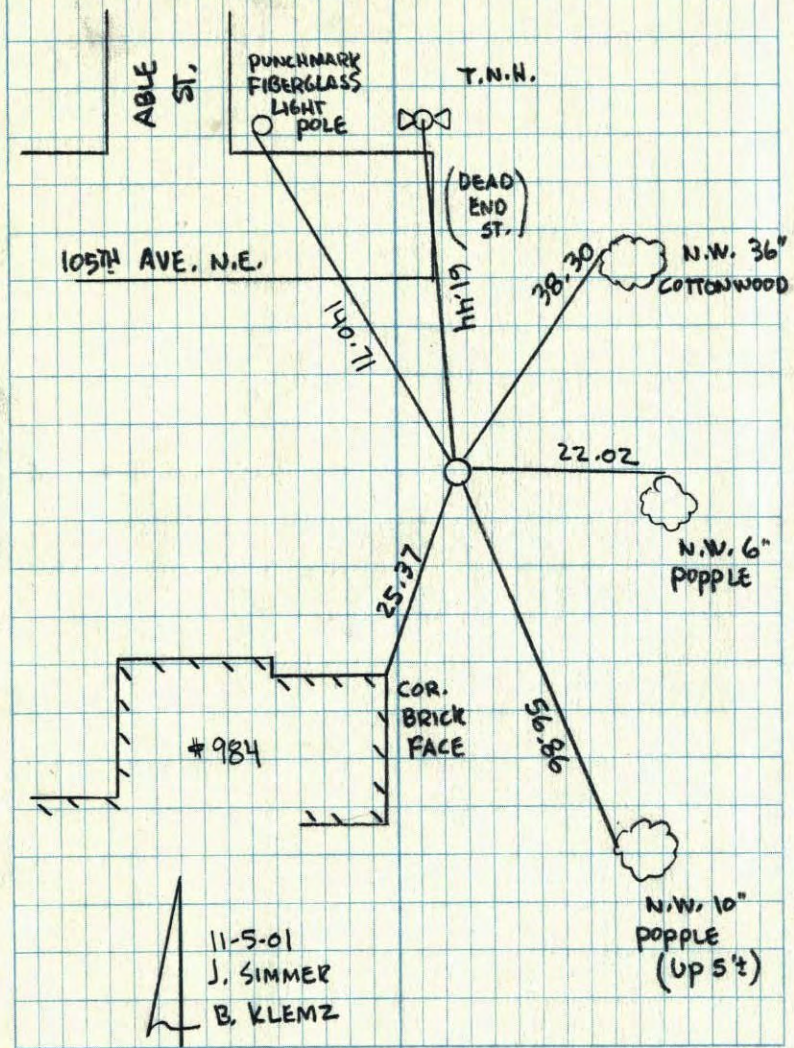


N.A.D.	1983	Co-ordinates
County Project		Co-ordinates
Northing	<u>145807.9917</u>	
Easting	<u>505410.1579</u>	
State Plane	Co-ordinates	
Y	_____	
X	_____	
Date	<u>12/10/98</u>	

Revised date	Revised date	Revised date
<u>6-6-86</u>		
<u>8-29-88</u>		
<u>6-29-90</u>		
<u>7-27-95</u>		
<u>12-10-98</u>		
<u>11-5-01</u>		



EAST 1/4 COR. SEC 19 T 31 R 23

GPS, RESET & RETIED CAST IRON MON.  
SIGN & POST ON NORTH SIDE

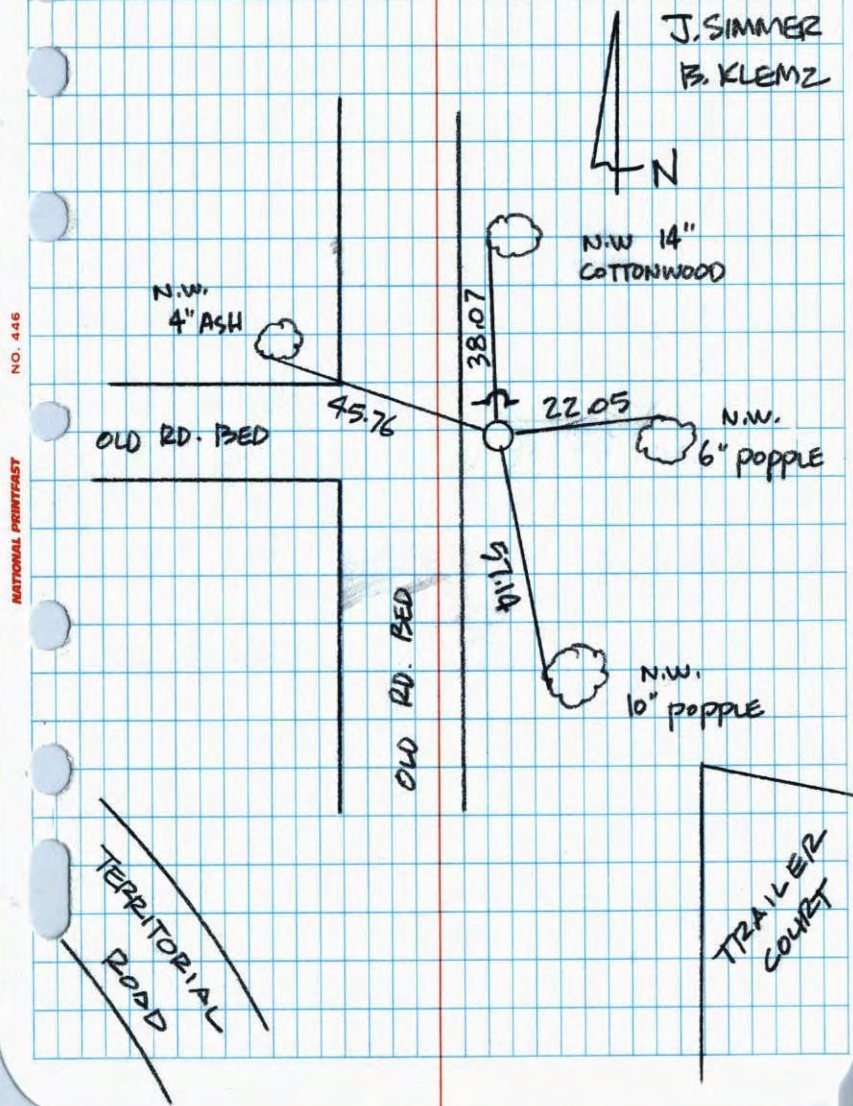
EAST 1/4 COR SEC 19 T 31 R 23

RETIED CAST IRON MONUMENT  
SIGN & POST ON N. SIDE

12-10-98

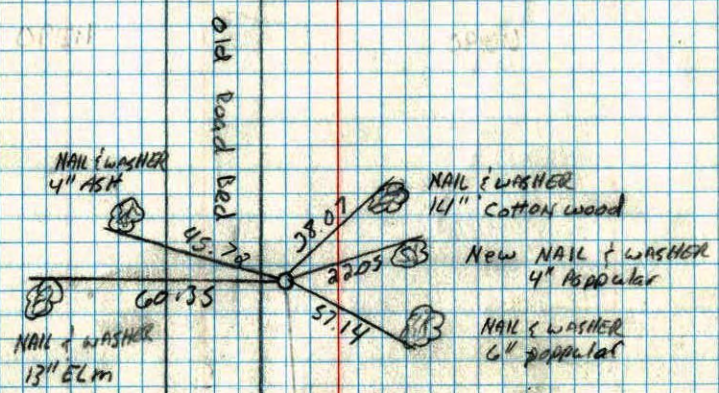
J. SIMMER

B. KLEMZ



EAST 1/4 corner of Sec. 19 T31 R23

Retied cast iron monument



TRAILER COURT

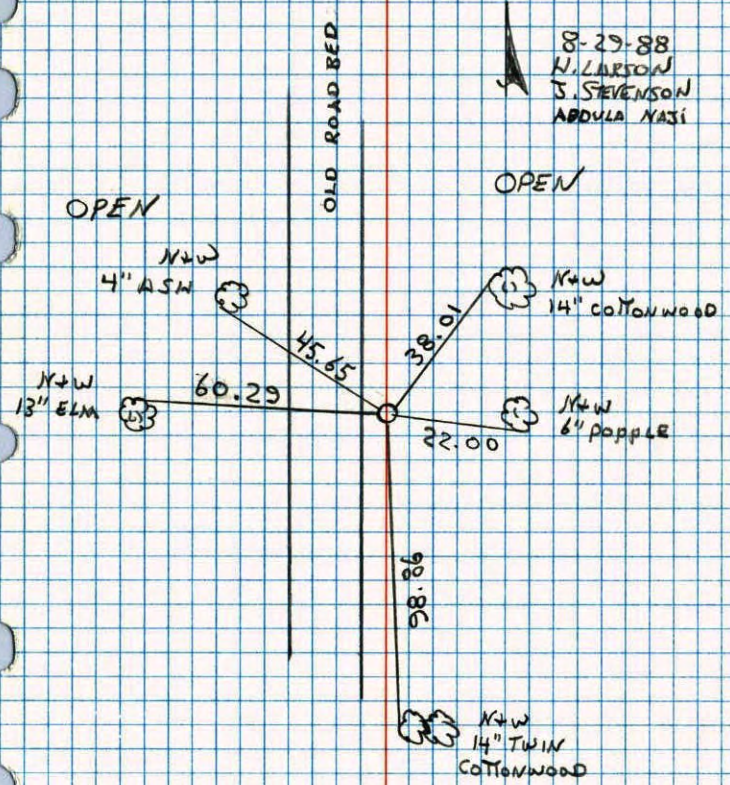
6-29-90  
D. Klersy  
M. Zimmerman

TRAILER RD

NO. 448 TELEPHONE

EAST 1/4 SECTION 19 T31 R23

RETIED AFTER CORNER CHECK FROM RESURVEY C.I. DOWN .5'

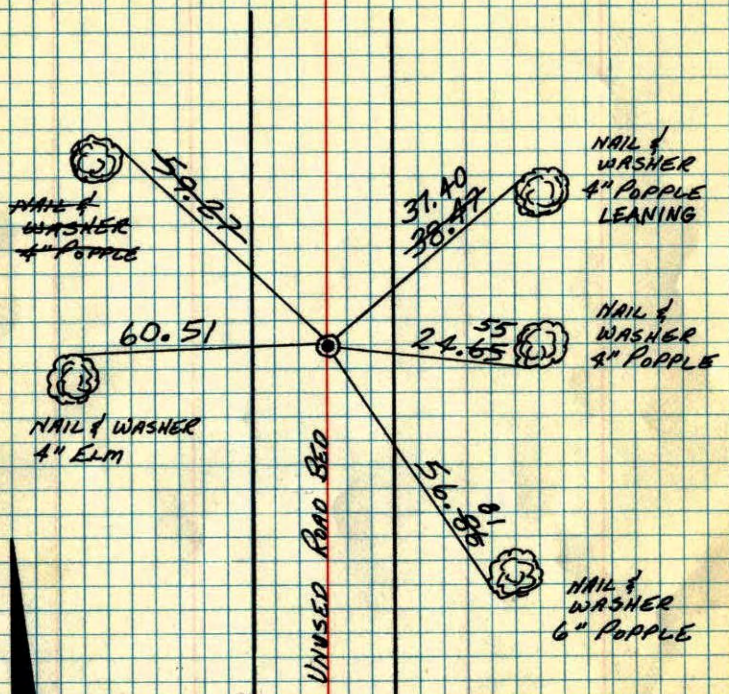


8-29-88  
H. LARSON  
S. STEVENSON  
ABDULA NAZI

NO. 448 TELEPHONE

# E 1/4 COR. SEC. 19 - T31 - R23

RESET CAST IRON MONUMENT FROM AREA RESURVEY.  
CAST IRON DIAM .5". RAISED 7-7-77 H.L.



JULY 5, 1977  
H. LARSON  
B. GUETZKO  
J. BOETTCHER

TIE CHECK  
6-4-80  
B. STEPHENS  
P. ROSS  
P. HORNBY

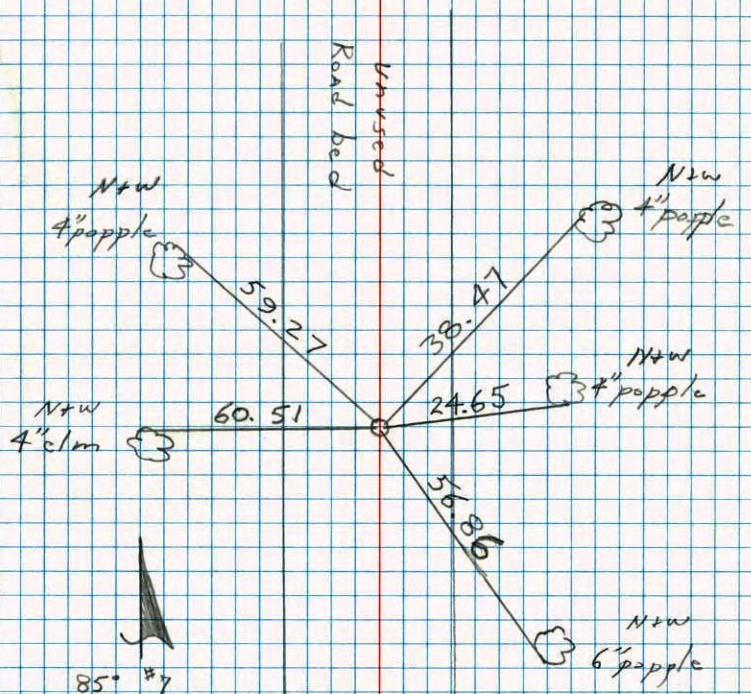
Replaced brackets  
C.I.  
4-25-78  
H. Larson  
B. Guetzko

TEMPERATURE CORRECTED  
AND HORIZONTALLY  
TAPED MEASUREMENTS

ROLAND W. ANDERSON  
COUNTY SURVEYOR  
ANOKA COUNTY, MINNESOTA

# E 1/4 Cor. Sec. 19 T31 R23

Reset cast iron monument From  
area resurveyed. C.I. down .5" ±  
raised 7-7-77 H.L. 1" down



85° #7  
7-5-77  
H. Larson  
B. Guetzko  
J. Boettcher

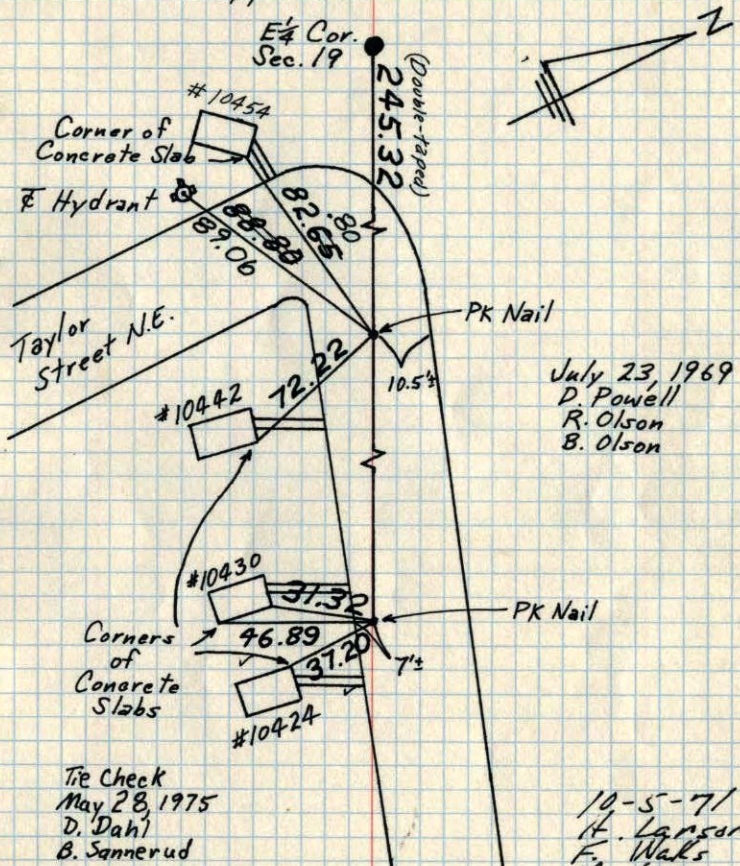
Transit tie

68

# E 1/4 Cor. Sec. 19-T31-R23

Cast Iron Monument up 0.1'±. Set in

May, 1959.



July 23, 1969  
D. Powell  
R. Olson  
B. Olson

Tie Check  
May 28, 1975  
D. Dahl  
B. Sannerud

10-5-71  
H. Larson  
F. Walls  
M. Season

TEMPERATURE CORRECTED  
AND HORIZONTALLY  
TAPED MEASUREMENTS

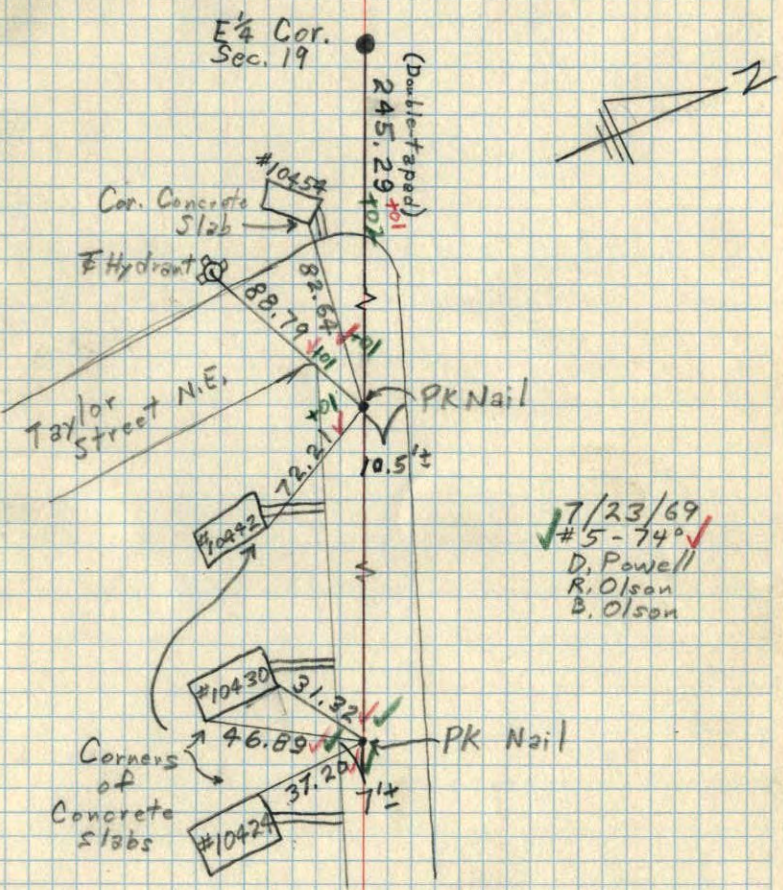
ROLAND W. ANDERSON  
COUNTY SURVEYOR  
ANOKA COUNTY, MINNESOTA

TRANSIT TIES

68

# E 1/4 Cor. Sec. 19-T31-R23

C.I. Mon. up 0.1'±. Set in May, 1959.



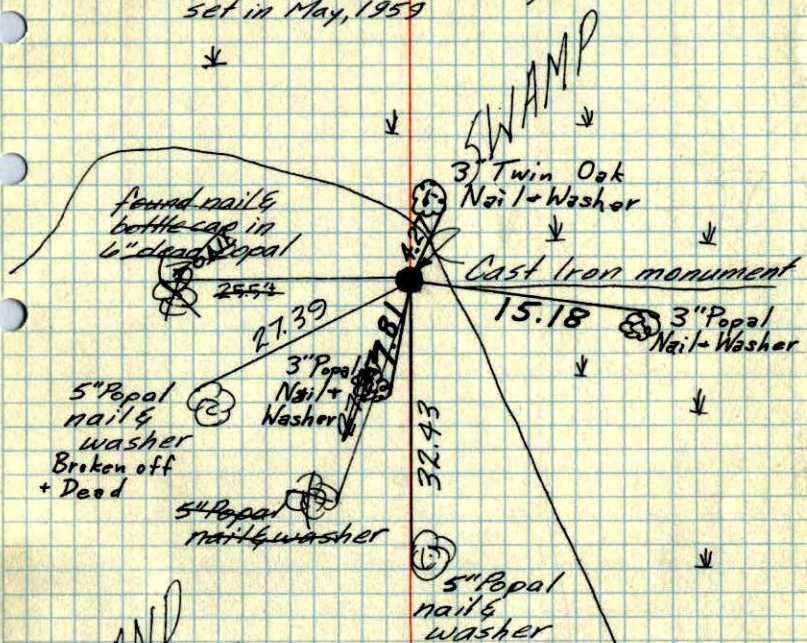
7/23/69  
#5-74°  
D. Powell  
R. Olson  
B. Olson

TEMPERATURE CORRECTED  
AND HORIZONTALLY  
TAPED MEASUREMENTS

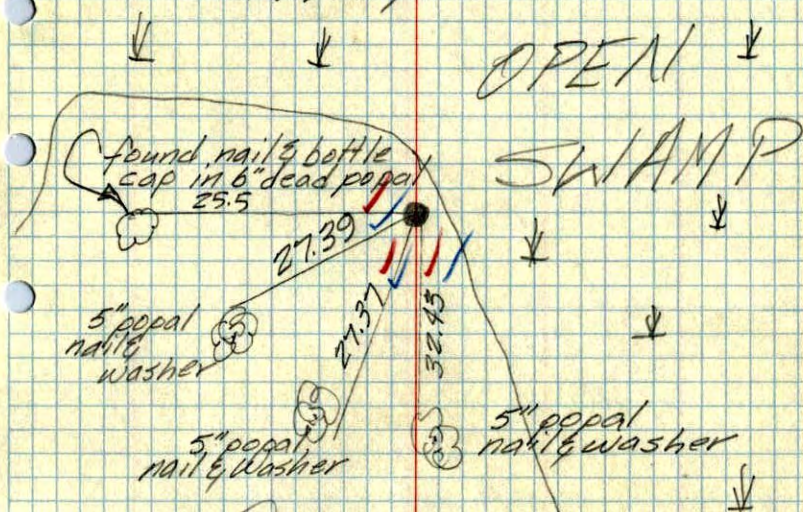
ROLAND W. ANDERSON  
COUNTY SURVEYOR  
ANOKA COUNTY, MINNESOTA



E 1/4 Cor. Sec. 19-T31-R23

Cast Iron Monument up 0.1<sup>3</sup>  
set in May, 1959STAND  
of  
POPPALSTie Check  
August 9, 1968  
D. Fawell  
R. Olson  
P. PichSept. 1, 1964  
M.D. Anderson  
J. DunlopROLAND W. ANDERSON  
COUNTY SURVEYOR  
ANOKA COUNTY, MINNESOTATEMPERATURE CORRECTED  
AND HORIZONTALLY  
TAPED MEASUREMENTS

E 1/4 Cor. Sec. 19-T31-R23

found Anoka County Cast Iron mon.  
set in May 1959STAND  
of  
POPPALSSept. 1, 1964  
M.D. Anderson  
J. Dunlop  
Temp. 70° —  
Tape # 1 —ROLAND W. ANDERSON  
COUNTY SURVEYOR  
ANOKA COUNTY, MINNESOTATEMPERATURE CORRECTED  
AND HORIZONTALLY  
TAPED MEASUREMENTS

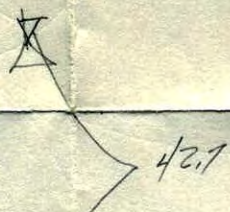
E 1/4 Cor. Sec. 19

T. 31 R. 23

Done



Distance checked  
to 1 1/2" I.P. I dug  
for Mono. but  
found none.



April 1959

6" Pop

Tree on N-S line  
with nail and  
bottle cap in blaze.

Tree dead

Suburban Eng. Inc.

May 1959